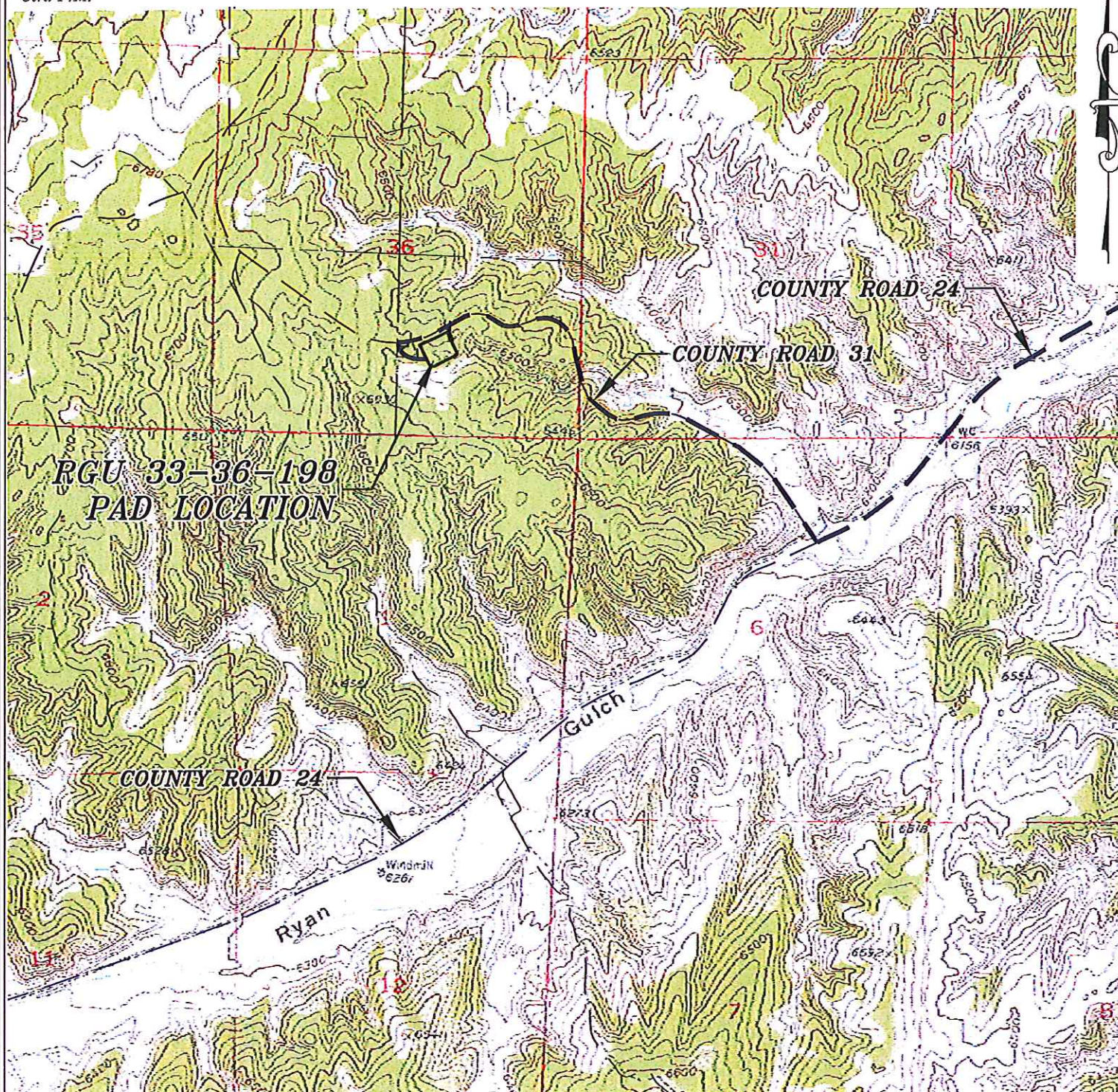


Section 36
T. 1 S., R 98 W
6th. P.M.



ACCESS DESCRIPTION:

FROM THE INTERSECTION OF STATE HIGHWAY 64 AND RIO BLANCO COUNTY ROAD 6 PROCEED SOUTHERLY ALONG COUNTY ROAD 5 ± 14.5 MILES TO THE INTERSECTION WITH COUNTY ROAD 24, PROCEED SOUTHWESTERLY ALONG COUNTY ROAD 24 ± 1.8 MILES TO THE INTERSECTION WITH COUNTY ROAD 31, PROCEED RIGHT IN A NORTHWESTERLY DIRECTION ± 1.5 MILES TO AN INTERSECTION WITH A DIRT/GRAVEL ROAD, PROCEED LEFT IN SOUTHEASTERLY DIRECTION ± 500 FT. TO THE RGU 33-36-198 DRILL PAD LOCATION, AS SHOWN HEREON.

136 East Third Street
Rifle, Colorado 81650
Ph. (970) 625-2720
Fax (970) 625-2773



BOOKCLIFF
Survey Services, Inc.

SCALE: 1" = 2000'
DATE: 11/15/11
PLAT: 5 of 7
PROJECT: Williams Highlands
DFT: cws

Construction Plan Prepared for:
WPXENERGY WPX Energy Rocky Mountain, LLC

RGU 33-36-198 Drill Pad - Plat 5
Access Map *TRPO*