

**HALLIBURTON**

---

**WILLIAMS PRODUCTION RMT INC - EBUS**

---

GM 422-23  
GRAND VALLEY  
Garfield County , Colorado

**Cement Surface Casing**

**Post Job Report**

The Road to Excellence Starts with Safety

|  |                                   |   |                        |
|--|-----------------------------------|---|------------------------|
| Sold To #: 300721                                    | Ship To #: 2874537                | Quote #:  | Sales Order #: 8424644 |
| Customer: WILLIAMS PRODUCTION RMT INC - EBUS         |                                   | Customer Rep: Hartl, Al                                 |                        |
| Well Name: GM  | Well #: 422-23                    | API/UWI #: 05-045-20466                                 |                        |
| Field: GRAND VALLEY                                  | City (SAP): PARACHUTE             | County/Parish: Garfield                                 | State: Colorado        |
| Lat: N 39.506 deg. OR N 39 deg. 30 min. 22.658 secs. |                                   | Long: W 108.083 deg. OR W -109 deg. 55 min. 0.862 secs. |                        |
| Contractor: NABORS                                   | Rig/Platform Name/Num: NABORS 576 |   |                        |
| Job Purpose: Cement Surface Casing                   |                                   |   |                        |
| Well Type: Development Well                          |                                   | Job Type: Cement Surface Casing                         |                        |
| Sales Person: KOHL, KYLE                             |                                   | Srvc Supervisor: ROSS, CHARLES                          | MBU ID Emp #: 453128   |

### Job Personnel

| HES Emp Name             | Exp Hrs | Emp #  | HES Emp Name               | Exp Hrs | Emp #  | HES Emp Name         | Exp Hrs | Emp #  |
|--------------------------|---------|--------|----------------------------|---------|--------|----------------------|---------|--------|
| DOUT, JACOB J            |         | 430298 | RAMSEY, STANTON<br>Michael |         | 477609 | REEVES, BRANDON<br>W |         | 287883 |
| ROSS, CHARLES<br>Raymond |         | 453128 |                            |         |        |                      |         |        |

### Equipment

| HES Unit # | Distance-1 way | HES Unit # | Distance-1 way | HES Unit # | Distance-1 way | HES Unit # | Distance-1 way |
|------------|----------------|------------|----------------|------------|----------------|------------|----------------|
|            |                |            |                |            |                |            |                |

### Job Hours

| Date | On Location Hours | Operating Hours | Date | On Location Hours | Operating Hours | Date | On Location Hours | Operating Hours |
|------|-------------------|-----------------|------|-------------------|-----------------|------|-------------------|-----------------|
|      |                   |                 |      |                   |                 |      |                   |                 |

**TOTAL** Total is the sum of each column separately

### Job

### Job Times

| Formation Name         | Top      | Bottom            | Called Out    | Date            | Time  | Time Zone |
|------------------------|----------|-------------------|---------------|-----------------|-------|-----------|
| Formation Depth (MD)   |          |                   | On Location   | 08 - Sep - 2011 | 01:30 | MST       |
| Form Type              |          | BHST              | On Location   | 08 - Sep - 2011 | 05:00 | MST       |
| Job depth MD           | 1034. ft | Job Depth TVD     | Job Started   | 08 - Sep - 2011 | 07:13 | MST       |
| Water Depth            |          | Wk Ht Above Floor | Job Completed | 08 - Sep - 2011 | 07:58 | MST       |
| Perforation Depth (MD) | From     | To                | Departed Loc  | 08 - Sep - 2011 | 09:15 | MST       |

### Well Data

| Description           | New / Used | Max pressure psig | Size in | ID in | Weight lbm/ft | Thread | Grade | Top MD ft | Bottom MD ft | Top TVD ft | Bottom TVD ft |
|-----------------------|------------|-------------------|---------|-------|---------------|--------|-------|-----------|--------------|------------|---------------|
| 13 1/2" OPEN HOLE     |            |                   |         | 13.5  |               |        |       | .         | 1034.        |            |               |
| 9 5/8" SURFACE CASING | Unknown    |                   | 9.625   | 9.001 | 32.3          |        | H-40  | .         | 998.         |            |               |

### Sales/Rental/3<sup>rd</sup> Party (HES)

| Description                                  | Qty | Qty uom | Depth | Supplier |
|--|-----|---------|-------|----------|
| PLUG,CMTG, TOP, 9 5/8, HWE, 8.16 MIN/9.06 MA | 1   | EA      |       |          |

### Tools and Accessories

| Type         | Size | Qty | Make | Depth | Type        | Size | Qty | Make | Depth | Type           | Size | Qty | Make |
|--------------|------|-----|------|-------|-------------|------|-----|------|-------|----------------|------|-----|------|
| Guide Shoe   |      |     |      |       | Packer      |      |     |      |       | Top Plug       |      |     |      |
| Float Shoe   |      |     |      |       | Bridge Plug |      |     |      |       | Bottom Plug    |      |     |      |
| Float Collar |      |     |      |       | Retainer    |      |     |      |       | SSR plug set   |      |     |      |
| Insert Float |      |     |      |       |             |      |     |      |       | Plug Container |      |     |      |
| Stage Tool   |      |     |      |       |             |      |     |      |       | Centralizers   |      |     |      |

### Miscellaneous Materials

| Gelling Agt   | Conc | Surfactant | Conc | Acid Type | Qty  | Conc | % |
|---------------|------|------------|------|-----------|------|------|---|
| Treatment Fld | Conc | Inhibitor  | Conc | Sand Type | Size | Qty  |   |

### Fluid Data

Stage/Plug #: 1

| Fluid #                                  | Stage Type         | Fluid Name                    | Qty    | Qty uom                           | Mixing Density lbm/gal | Yield ft <sup>3</sup> /sk | Mix Fluid Gal/sk | Rate bbl/min | Total Mix Fluid Gal/sk |
|--|--------------------|-------------------------------|--------|-----------------------------------|------------------------|---------------------------|------------------|--------------|------------------------|
| 1  | Water Spacer       |                               | 20.00  | bbl                               | 8.34                   | .0                        | .0               | .0           |                        |
| 2  | Tail Cement        | VERSACEM (TM) SYSTEM (452010) | 280.0  | sacks                             | 12.8                   | 2.11                      | 11.75            |              | 11.75                  |
| 3  | Displacement Fluid |                               | 78.00  | bbl                               | 8.34                   | .0                        | .0               | .0           |                        |
| Calculated Values                        |                    | Pressures                     |        | Volumes                           |                        |                           |                  |              |                        |
| Displacement                             |                    | Shut In: Instant              |        | Lost Returns                      |                        | Cement Slurry             |                  | Pad          |                        |
| Top Of Cement                            |                    | 5 Min                         |        | Cement Returns                    |                        | Actual Displacement       |                  | Treatment    |                        |
| Frac Gradient                            |                    | 15 Min                        |        | Spacers                           |                        | Load and Breakdown        |                  | Total Job    |                        |
| Rates                                    |                    |                               |        |                                   |                        |                           |                  |              |                        |
| Circulating                              |                    | Mixing                        |        | Displacement                      |                        | Avg. Job                  |                  |              |                        |
| Cement Left In Pipe                      | Amount             | 42 ft                         | Reason | Shoe Joint                        |                        |                           |                  |              |                        |
| Frac Ring # 1 @                          | ID                 | Frac ring # 2 @               | ID     | Frac Ring # 3 @                   | ID                     | Frac Ring # 4 @           | ID               |              |                        |
| The Information Stated Herein Is Correct |                    |                               |        | Customer Representative Signature |                        |                           |                  |              |                        |

The Road to Excellence Starts with Safety

|  |                       |   |                        |
|--|-----------------------|---|------------------------|
| Sold To #: 300721                                    | Ship To #: 2874537    | Quote #:  | Sales Order #: 8424644 |
| Customer: WILLIAMS PRODUCTION RMT INC - EBUS         |                       | Customer Rep: Hartl, Al                                 |                        |
| Well Name: GM  | Well #: 422-23        | API/UWI #: 05-045-20466                                 |                        |
| Field: GRAND VALLEY                                  | City (SAP): PARACHUTE | County/Parish: Garfield                                 | State: Colorado        |
| Legal Description:                                   |                       |   |                        |
| Lat: N 39.506 deg. OR N 39 deg. 30 min. 22.658 secs. |                       | Long: W 108.083 deg. OR W -109 deg. 55 min. 0.862 secs. |                        |
| Contractor: NABORS                                   |                       | Rig/Platform Name/Num: NABORS 576                       |                        |
| Job Purpose: Cement Surface Casing                   |                       |   | Ticket Amount:         |
| Well Type: Development Well                          |                       | Job Type: Cement Surface Casing                         |                        |
| Sales Person: KOHL, KYLE                             |                       | Srvc Supervisor: ROSS, CHARLES                          | MBU ID Emp #: 453128   |

| Activity Description                     | Date/Time        | Cht # | Rate bbl/min | Volume bbl |       | Pressure psig |        | Comments   |
|--|------------------|-------|--------------|------------|-------|---------------|--------|--|
|  |                  |       |              | Stage      | Total | Tubing        | Casing |  |
| Call Out                                 | 09/08/2011 01:30 |       |              |            |       |               |        |  |
| Pre-Convoy Safety Meeting                | 09/08/2011 03:40 |       |              |            |       |               |        | WITH ALL HES EE'S  |
| Depart from Service Center or Other Site | 09/08/2011 03:50 |       |              |            |       |               |        |  |
| Arrive at Location from Service Center   | 09/08/2011 05:00 |       |              |            |       |               |        |  |
| Assessment Of Location Safety Meeting    | 09/08/2011 06:10 |       |              |            |       |               |        | WITH ALL HES EE'S  |
| Pre-Rig Up Safety Meeting                | 09/08/2011 06:15 |       |              |            |       |               |        | WITH ALL HES EE'S  |
| Rig-Up Equipment                         | 09/08/2011 06:20 |       |              |            |       |               |        | 1-F550 PICKUP, 1-ELITE PUMP TRUCK, 1-660 CEMENT BULK TRUCK, 1-HARD LINE TO RIG AND WASH UP OUT TO A WATER TRUCK FROM MANIFOLD, 1- 9 5/8" PLUG CONTAINER.                   |
| Pre-Job Safety Meeting                   | 09/08/2011 07:00 |       |              |            |       |               |        | WITH ALL HES EE'S AND RIG CREW   |
| Start Job                                | 09/08/2011 07:13 |       |              |            |       |               |        | TD 1034, 9 5/8 32.3# CASING SET @ 998, SJ 42, FC 956, LJ 28, MW# 10.2, RIG CIRCULATED 1 HR 20 MIN PRIOR TO CEMENT JOB, HEAD AND CASING CHAINED DOWN BECAUSE OF PSI TO LIFT |
| Pump Water                               | 09/08/2011 07:13 |       | 2            | 2          |       |               | 46.0   | FILL LINES, FRESH WATER  |
| Activity Description                     | Date/Time        | Cht   | Rate bbl/min | Volume bbl |       | Pressure psig |        | Comments   |

Sold To #: 300721

Ship To #: 2874537

Quote # :

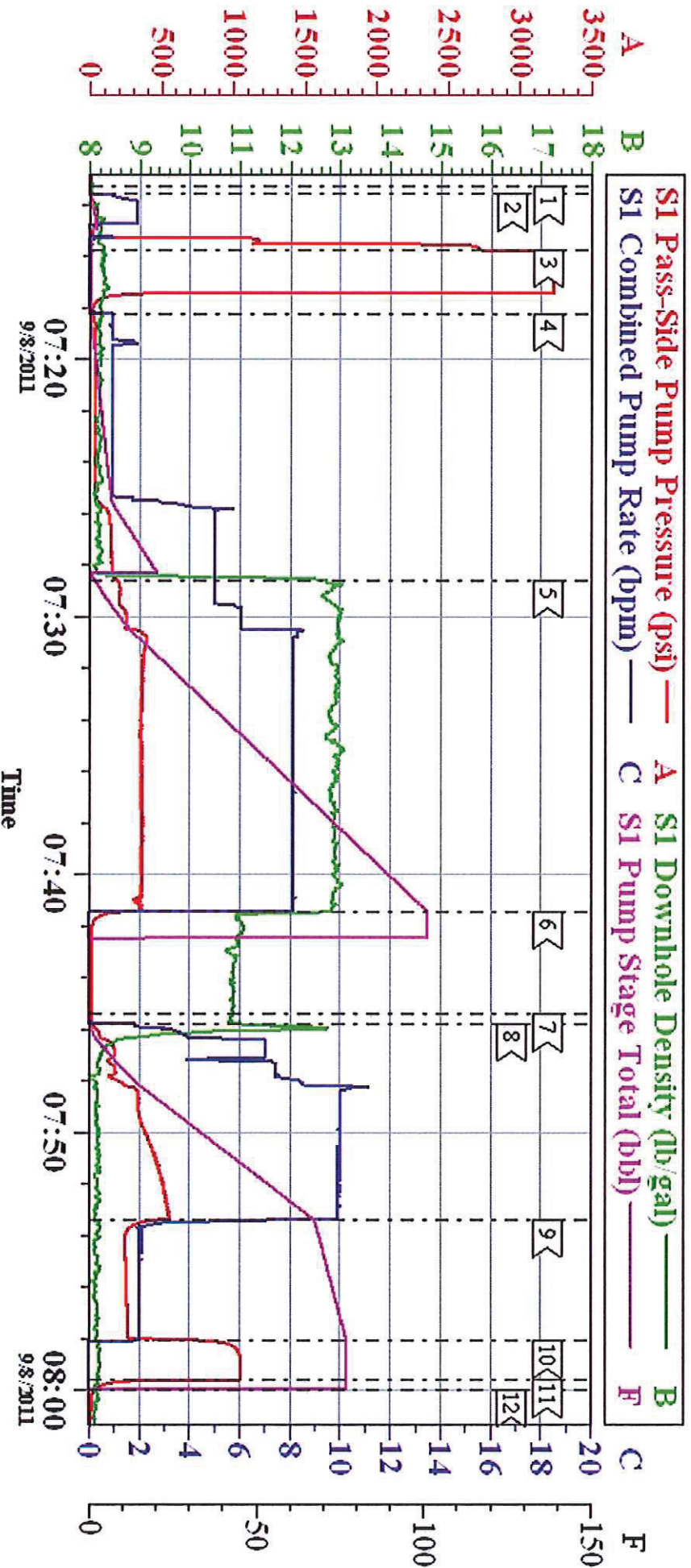
Sales Order # :

8424644

|   |                     | #  | Stage | Total | Tubing | Casing |   |
|---|---------------------|----|-------|-------|--------|--------|---|
| Test Lines  | 09/08/2011<br>07:15 |    |       |       |        |        | TEST TO 3000 PSI  |
| Pump Spacer 1                                       | 09/08/2011<br>07:18 | 5  | 20    |       |        | 140.0  | FRESH WATER   |
| Pump Tail Cement                                    | 09/08/2011<br>07:28 | 5  | 105.2 |       |        | 400.0  | 280 SKS OF<br>VERSACEM PUMPED<br>@ 12.8 PPG, YIELD<br>2.11, WATER 11.75   |
| Shutdown  | 09/08/2011<br>07:41 |    |       |       |        |        |   |
| Drop Plug   | 09/08/2011<br>07:46 |    |       |       |        |        | TOP PLUG, PLUG<br>WENT  |
| Pump Displacement                                   | 09/08/2011<br>07:46 | 10 | 77.4  |       |        | 540.0  | FRESH WATER   |
| Slow Rate   | 09/08/2011<br>07:53 | 2  | 67    |       |        | 255.0  | RATE SLOWED 10 BBL<br>PRIOR TO<br>CALCULATED<br>DISPLACEMENT  |
| Bump Plug   | 09/08/2011<br>07:58 | 2  | 77.4  |       |        | 280.0  | PLUG LANDED.<br>PRESSURED UP TO<br>1020 PSI.  |
| Check Floats  | 09/08/2011<br>07:59 |    |       |       |        |        | FLOATS HELD   |
| End Job   | 09/08/2011<br>07:59 |    |       |       |        |        | GOOD RETURNS<br>THROUGHOUT JOB,<br>NO MOVEMENT OF<br>PIPE THROUGHOUT<br>JOB, 29 BBLS OF<br>CEMENT CIRCULATED<br>TO THE PIT=77 SKS |
| Post-Job Safety Meeting (Pre<br>Rig-Down)           | 09/08/2011<br>08:05 |    |       |       |        |        | WITH ALL HES EE'S   |
| Rig-Down Equipment                                  | 09/08/2011<br>08:10 |    |       |       |        |        |   |
| Pre-Convoy Safety Meeting                           | 09/08/2011<br>09:10 |    |       |       |        |        | WITH ALL HES EE'S   |
| Depart Location for Service<br>Center or Other Site | 09/08/2011<br>09:15 |    |       |       |        |        | THANKS FOR USING<br>GRAND JUNCTION<br>HALLIBURTON<br>CEMENT<br>DEPARTMENT, CHUCK<br>ROSS AND CREW                                 |

# WILLIAMS

## CEMENT 9 5/8" SURFACE CASING GM 422-23

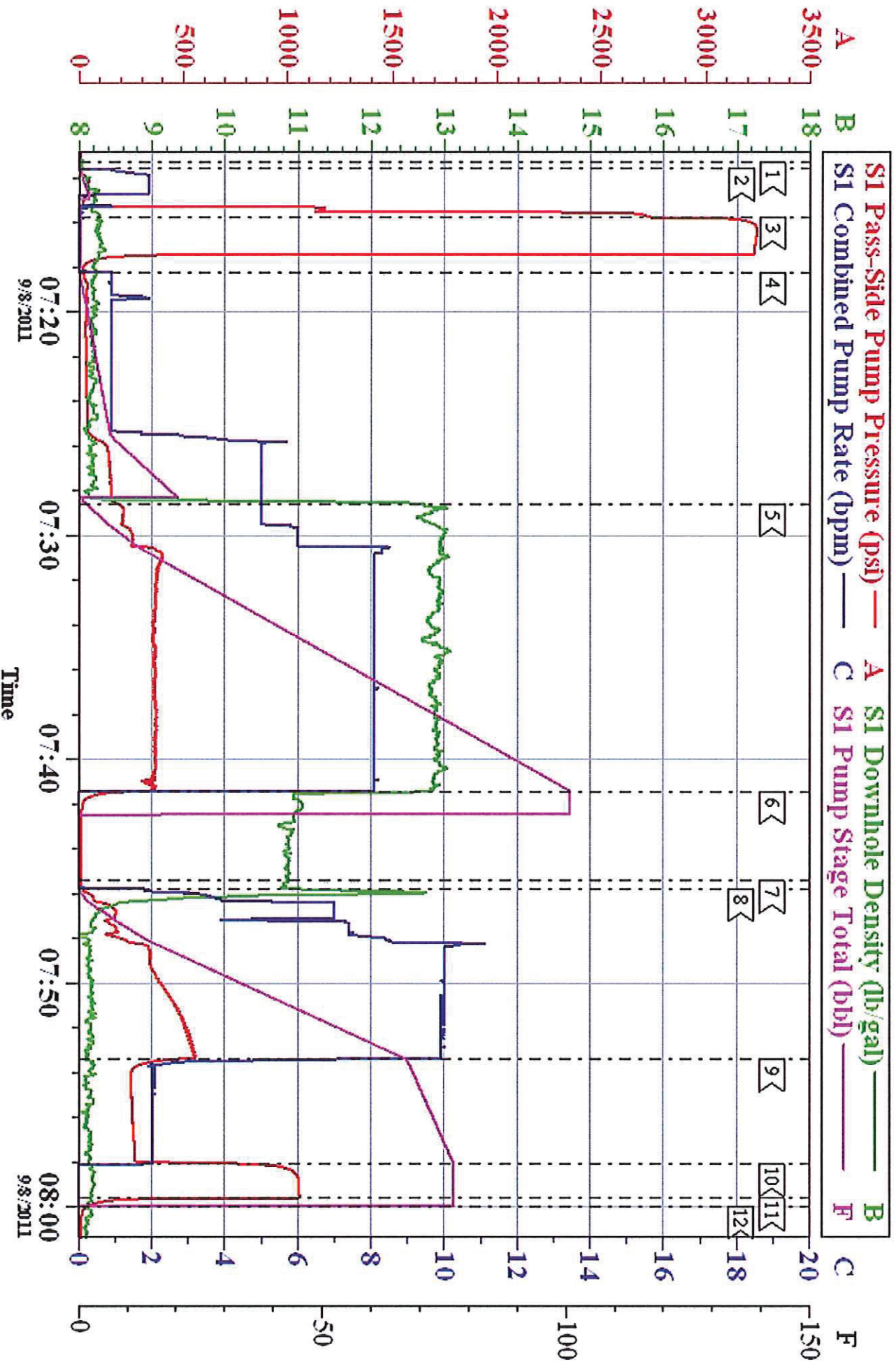


| Local Event Log      | Maximum  | SPPP  | Maximum                     | SPPP     |       |
|----------------------|----------|-------|-----------------------------|----------|-------|
| 1 < START JOB        | 07:13:19 | 2.000 | 2 < PRIME LINES             | 07:13:35 | 2722  |
| 3 < PRESSURE TEST    | 07:15:45 | 3244  | 4 < PUMP FRESH WATER SPACER | 07:18:14 | 188.3 |
| 5 < PUMP TAIL CEMENT | 07:28:35 | 403.0 | 6 < SHUT DOWN               | 07:41:26 | 325.0 |
| 7 < DROP PLUG        | 07:45:25 | 14.88 | 8 < PUMP DISPLACEMENT       | 07:45:46 | 565.0 |
| 9 < SLOW RATE        | 07:53:23 | 790.8 | 10 < BUMP PLUG              | 07:58:05 | 1058  |
| 11 < CHECK FLOATS    | 07:59:36 | 1055  | 12 < END JOB                | 07:59:58 | 45.00 |

|                   |           |                     |             |                 |            |
|-------------------|-----------|---------------------|-------------|-----------------|------------|
| Customer:         | WILLIAMS  | Job Date:           | 08-Sep-2011 | Sales Order #:  | 8424644    |
| Well Description: | GM 422-23 | Job type:           | SURFACE     | ADC Used:       | YES        |
| Customer Rep:     | AL HARTL  | Service Supervisor: | CHUCK ROSS  | Operator/ Pump: | JACOB DOUT |

# WILLIAMS

## CEMENT 9 5/8" SURFACE CASING GM 422-23



|                             |                                |                            |
|-----------------------------|--------------------------------|----------------------------|
| Customer: WILLIAMS          | Job Date: 08-Sep-2011          | Sales Order #: 8424644     |
| Well Description: GM 422-23 | Job type: SURFACE              | ADC Used: YES              |
| Customer Rep: AL HARTL      | Service Supervisor: CHUCK ROSS | Operator/ Pump: JACOB DOUT |