

HALLIBURTON

WILLIAMS PRODUCTION RMT INC - EBUS

GM 22-23
GRAND VALLEY
Garfield County , Colorado

Cement Surface Casing
08-Aug-2011

Job Site Documents

The Road to Excellence Starts with Safety

Sold To #: 300721		Ship To #: 2867039		Quote #:		Sales Order #: 8335128	
Customer: WILLIAMS PRODUCTION RMT INC - EBUS				Customer Rep: Klatt, Brian			
Well Name: GM		Well #: 22-23		API/UWI #: 05-045-20479			
Field: GRAND VALLEY		City (SAP): PARACHUTE		County/Parish: Garfield		State: Colorado	
Lat: N 39.506 deg. OR N 39 deg. 30 min. 22.702 secs.				Long: W 108.083 deg. OR W -109 deg. 55 min. 0.682 secs.			
Contractor: Nabors Industries LTD.		Rig/Platform Name/Num: Nabors 576					
Job Purpose: Cement Surface Casing							
Well Type: Development Well				Job Type: Cement Surface Casing			
Sales Person: SCOTT, KYLE		Srvs Supervisor: KUKUS, CRAIG		MBU ID Emp #: 369124			
Job Personnel							
HES Emp Name	Exp Hrs	Emp #	HES Emp Name	Exp Hrs	Emp #	HES Emp Name	Exp Hrs
BRENNECKE, ANDREW Bailey	5.5	486345	HAMMOND, DENNIS C	5.5	287025	KUKUS, CRAIG A	5.5
MILLER II, MATTHEW Reginald	5.5	425164					
Equipment							
HES Unit #	Distance-1 way	HES Unit #	Distance-1 way	HES Unit #	Distance-1 way	HES Unit #	Distance-1 way
10592964	60 mile	10744549	60 mile	10829469	60 mile	10871245	60 mile
11360883	60 mile						
Job Hours							
Date	On Location Hours	Operating Hours	Date	On Location Hours	Operating Hours	Date	On Location Hours
8/7/11	2	0	8/8/11	3.5	1		
TOTAL		Total is the sum of each column separately					
Job				Job Times			
Formation Name				Date	Time	Time Zone	
Formation Depth (MD)	Top	Bottom		Called Out	07 - Aug - 2011	17:30	MST
Form Type	BHST			On Location	07 - Aug - 2011	21:00	MST
Job depth MD	976. ft	Job Depth TVD	976. ft	Job Started	08 - Aug - 2011	02:50	MST
Water Depth		Wk Ht Above Floor	4. ft	Job Completed	08 - Aug - 2011	03:32	MST
Perforation Depth (MD)	From	To		Departed Loc	08 - Aug - 2011	05:15	MST
Well Data							
Description	New / Used	Max pressure psig	Size in	ID in	Weight lbm/ft	Thread	Grade
13 1/2" Open Hole				13.5			
9 5/8" Surface Casing	New		9.625	9.001	32.3		H-40
Sales/Rental/3 rd Party (HES)							
Description	Qty	Qty uom	Depth	Supplier			
PLUG,CMTG,TOP,9 5/8,HWE,8.16 MIN/9.06 MA	1	EA					
Tools and Accessories							
Type	Size	Qty	Make	Depth	Type	Size	Qty
Guide Shoe					Packer		
Float Shoe					Bridge Plug		
Float Collar					Retainer		
Insert Float							
Stage Tool							
Miscellaneous Materials							
Gelling Agt		Conc		Surfactant		Conc	
Treatment Fld		Conc		Inhibitor		Conc	
Fluid Data							
Stage/Plug #: 1							

HALLIBURTON***Cementing Job Summary***

Fluid #	Stage Type	Fluid Name	Qty	Qty uom	Mixing Density lbm/gal	Yield ft ³ /sk	Mix Fluid Gal/sk	Rate bbl/min	Total Mix Fluid Gal/sk
1	Water Spacer		20.00	bbl	8.33	.0	.0	4	
2	VersaCem Tail	VERSACEM (TM) SYSTEM (452010)	265.0	sacks	12.8	2.11	11.75	8	11.75
		11.75 Gal FRESH WATER							
3	Displacement Fluid		73.00	bbl	8.34	.0	.0	10	
Calculated Values		Pressures		Volumes					
Displacement	73	Shut In: Instant		Lost Returns	0	Cement Slurry	99.7	Pad	
Top Of Cement	SURFACE	5 Min		Cement Returns	25	Actual Displacement	73	Treatment	
Frac Gradient		15 Min		Spacers	20	Load and Breakdown		Total Job	193
Rates									
Circulating	RIG	Mixing	8	Displacement	10	Avg. Job	9		
Cement Left In Pipe	Amount	43.9 ft	Reason	Shoe Joint					
Frac Ring # 1 @	ID	Frac ring # 2 @	ID	Frac Ring # 3 @	ID	Frac Ring # 4 @	ID		
The Information Stated Herein Is Correct				Customer Representative Signature					

The Road to Excellence Starts with Safety

Sold To #: 300721	Ship To #: 2867039	Quote #:	Sales Order #: 8335128
Customer: WILLIAMS PRODUCTION RMT INC - EBUS	Customer Rep: Klatt, Brian		
Well Name: GM	Well #: 22-23	API/UWI #: 05-045-20479	
Field: GRAND VALLEY	City (SAP): PARACHUTE	County/Parish: Garfield	State: Colorado
Legal Description:			
Lat: N 39.506 deg. OR N 39 deg. 30 min. 22.702 secs.		Long: W 108.083 deg. OR W -109 deg. 55 min. 0.682 secs.	
Contractor: Nabors Industries LTD.	Rig/Platform Name/Num: Nabors 576		
Job Purpose: Cement Surface Casing	Ticket Amount:		
Well Type: Development Well	Job Type: Cement Surface Casing		
Sales Person: SCOTT, KYLE	Srvc Supervisor: KUKUS, CRAIG	MBU ID Emp #: 369124	

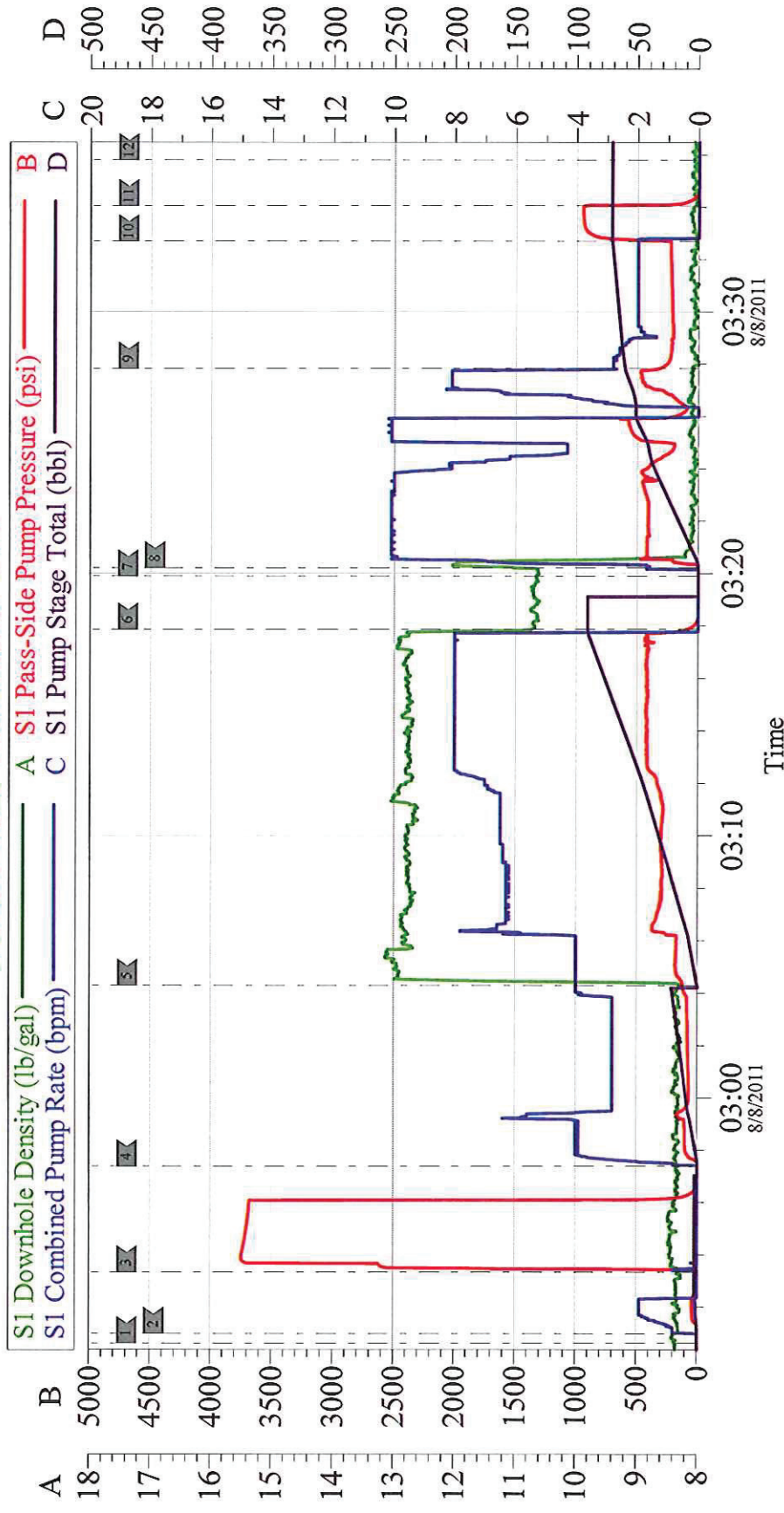
Activity Description	Date/Time	Cht #	Rate bbl/min	Volume bbl		Pressure psig		Comments
				Stage	Total	Tubing	Casing	
Call Out	08/07/2011 17:30							
Depart Yard Safety Meeting	08/07/2011 18:30							SAFETY MEETING INVOLVING THE ENTIRE CMT CREW
Arrive At Loc	08/07/2011 21:00							RIG SETTING UP TO RUN CSG
Assessment Of Location Safety Meeting	08/07/2011 21:15							ASSESSMENT OF LOCATION INVOLVING THE ENTIRE CMT CREW
Circulate Well	08/08/2011 01:10		8					RIG
Pre-Rig Up Safety Meeting	08/08/2011 02:00							SAFETY MEETING INVOLVING THE ENTIRE CMT CREW
Rig-Up Equipment	08/08/2011 02:15							RIG UP TO STAND PIPE AND IRON TO CELLAR FOR CLEAN UP / WATER TO UP RIGHT AND DAY TANK
Pre-Job Safety Meeting	08/08/2011 02:40							SAFETY MEETING INVOLVING EVERYONE ON LOCATION
Start Job	08/08/2011 02:50							T D 976 FT TP 961 FT SJ 43.9 FT MUD WT 10.7 # PIPE 9 5/8 IN 32.3 # OH 13.5 IN
Other	08/08/2011 02:50		2	2			62.0	FILL LINES WITH FRESH WATER
Pressure Test	08/08/2011 02:53		0.5			3500.0		PRESSURE TEST GOOD
Pump Spacer 1	08/08/2011 02:57		4	20			255.0	FRESH WATER SPACER

Cementing Job Log

Activity Description	Date/Time	Cht #	Rate bbl/min	Volume bbl		Pressure psig		Comments
				Stage	Total	Tubing	Casing	
Pump Tail Cement	08/08/2011 03:04		8	99.6			440.0	PUMP 265 SKS TAIL CEMENT AT 12.8 PPG 2.11 Y 11.75 GAL SK
Shutdown	08/08/2011 03:17							
Drop Top Plug	08/08/2011 03:19							PLUG LEFT THE PLUG CONTAINER
Pump Displacement	08/08/2011 03:20		10	72.7			490.0	PUMP FRESH WATER DISPLACEMENT
Slow Rate	08/08/2011 03:27		2	62			260.0	SLOW RATE TO 4 BBL MIN LAST 10 BBLS
Bump Plug	08/08/2011 03:32		2	72.7			970.0	PLUG LANDED AT 265 PSI
Check Floats	08/08/2011 03:34							FLOATS HELD / GOT 1/2 BBL BACK TO TANKS
End Job	08/08/2011 03:35							HAD GOOD RETURNS THRU OUT THE JOB / GOT CEMENT BACK TO SURFACE 25 BBLS TOTAL
Pre-Rig Down Safety Meeting	08/08/2011 03:40							SAFETY MEETING INVOLVING THE ENTIRE CMT CREW
Rig-Down Equipment	08/08/2011 03:45							RIG FLOOR DOWN / WASH UP TO CELLAR
Safety Meeting - Departing Location	08/08/2011 05:00							SAFETY MEETING INVOLVING THE ENTIRE CMT CREW
Comment	08/08/2011 05:15							THANK YOU FOR USING HALLIBURTON, CRAIG KUKUS AND CREW

EVENT #	EVENT	VOLUME	SACKS	WEIGHT	YIELD	GAL/ SK
1	Start Job		MAX 1120			
	FILL LINES	2				
6	Test Lines	3500.0				
9	H2O Spacer	20.0		8.3		
15	TAIL CEMENT	99.6	265	12.8	2.11	11.75
	SHUTDOWN					
	DROP TOP PLUG					
25	H2O DISPLACE	72.7		8.3		
	SLOW RATE	62.0		slow	4BBL	
	LAND PLUG	215.0	PLUS	500	OVER	
	CHECK FLOATS					
	END JOB		Do Not Overdisplace			
DISPLACEMENT	TOTAL PIPE	SHOE JOINT LENGTH	FLOAT COLLAR	BBL/FT	H2O REQ.	
72.70	961	43.90	917.10	0.0787	200	
PSI TO LIFT	357	*****Use Mud Scales on Each Tier*****				
Total Displacement	72.70					
CALCULATED PSI LAND		215	TOTAL FLUID PUMPED		193	
Collapse	2270	Burst	1400	SO#	8335128	

WILLIAMS SURFACE NABORS 576



Local Event Log

1	START JOB	02:50:38	2	PRIME LINES	02:50:59	3	PRESSURE TEST	02:53:20
4	PUMP H2O SPACER	02:57:24	5	PUMP TAIL CEMENT	03:04:18	6	SHUT DOWN	03:17:52
7	DROP PLUG	03:19:54	8	PUMP H2O DISPLACEMENT	03:20:13	9	SLOW RATE	03:27:50
10	BUMP PLUG	03:32:42	11	CHECK FLOATS	03:34:03	12	END JOB	03:35:49

Customer:	WILLIAMS PRODUCTION	Job Date:	08-Aug-2011	Sales Order #:	8335128
Well Description:	GM 22-23	Job Type:	SURFACE	ADC Used:	YES
Company Rep:	BRIAN KLATT	Cement Supervisor:	CRAIG KUKUS	Elite #/Operator:	ELITE 8 ANDREW BENNECKE

HALLIBURTON

WILLIAMS PRODUCTION RMT INC

**GM 22-23
GRAND VALLEY
Garfield County , Colorado**

Squeeze Perfs

17-Jan-2012

Post Job Report

The Road to Excellence Starts with Safety

Sold To #: 300721	Ship To #: 2867039	Quote #:	Sales Order #: 9189271
Customer: WILLIAMS PRODUCTION RMT INC - EBUS	Customer Rep: Cady, Bob		
Well Name: GM	Well #: 22-23	API/UWI #: 05-045-20479	
Field: GRAND VALLEY	City (SAP): PARACHUTE	County/Parish: Garfield	State: Colorado
Lat: N 39.506 deg. OR N 39 deg. 30 min. 22.702 secs.	Long: W 108.083 deg. OR W -109 deg. 55 min. 0.682 secs.		
Contractor: WORKOVER	Rig/Platform Name/Num: WORKOVER		
Job Purpose: Squeeze Perfs			
Well Type: Development Well	Job Type: Squeeze Perfs		
Sales Person: MAYO, MARK	Srv Supervisor: JAMISON, PRICE	MBU ID Emp #: 229155	

Job Personnel

HES Emp Name	Exp Hrs	Emp #	HES Emp Name	Exp Hrs	Emp #	HES Emp Name	Exp Hrs	Emp #
BLANCHETTE, JAMES George	7	371360	DEUSSEN, EDWARD Eric	7	485182	JAMISON, PRICE W	7	229155
JENSEN, SHANE Lynn	7	441759	VANALSTYNE, TROY L	7	420256			

Equipment

HES Unit #	Distance-1 way	HES Unit #	Distance-1 way	HES Unit #	Distance-1 way	HES Unit #	Distance-1 way
10248065	60 mile	10744648C	60 mile	10988964	60 mile	11164589	60 mile
11583934	60 mile						

Job Hours

Date	On Location Hours	Operating Hours	Date	On Location Hours	Operating Hours	Date	On Location Hours	Operating Hours
01-17-2012	7	2						

TOTAL Total is the sum of each column separately

Job

Job Times

Formation Name		Date	Time	Time Zone
Formation Depth (MD)	Top Bottom	Called Out	17 - Jan - 2012	03:00 MST
Form Type	BHST	On Location	17 - Jan - 2012	07:00 MST
Job depth MD	6358. ft	Job Depth TVD	6358. ft	Job Started 17 - Jan - 2012 13:00 MST
Water Depth		Wk Ht Above Floor	6. ft	Job Completed 17 - Jan - 2012 15:00 MST
Perforation Depth (MD)	From To	Departed Loc	17 - Jan - 2012	17:00 MST

Well Data

Description	New / Used	Max pressure psig	Size in	ID in	Weight lbm/ft	Thread	Grade	Top MD ft	Bottom MD ft	Top TVD ft	Bottom TVD ft
PRODUCTION CASING	Unknown		4.5	4.	11.6		I-80	.	6600.	.	6600.
TUBING	Unknown		2.375	1.995	4.6		J-55	.	6238.	.	6238.

Tools and Accessories

Type	Size	Qty	Make	Depth	Type	Size	Qty	Make	Depth	Type	Size	Qty	Make
Guide Shoe					Packer					Top Plug			
Float Shoe					Bridge Plug					Bottom Plug			
Float Collar					Retainer					SSR plug set			
Insert Float										Plug Container			
Stage Tool										Centralizers			

Miscellaneous Materials

Gelling Agt		Conc		Surfactant		Conc		Acid Type		Qty		Conc	%
Treatment Fld		Conc		Inhibitor		Conc		Sand Type		Size		Qty	

Fluid Data

Stage/Plug #: 1											
Fluid #	Stage Type	Fluid Name	Qty	Qty uom	Mixing Density lbm/gal	Yield ft ³ /sk	Mix Fluid Gal/sk	Rate bbl/min	Total Mix Fluid Gal/sk		

HALLIBURTON***Cementing Job Summary***

1	Injection Test		10	bbl	8.33	.0	.0	.0	
2	SqueezeCem Tail Cement	SQUEEZECM (TM) SYSTEM (452971)	200	sacks	15.8	1.15	5.0		5.0
	5 Gal	FRESH WATER							
3	Displacement		23.5	bbl	8.33	.0	.0	.0	
Calculated Values		Pressures		Volumes					
Displacement	24.1	Shut In: Instant	775	Lost Returns		Cement Slurry	41	Pad	
Top Of Cement	5395	5 Min		Cement Returns	1	Actual Displacement	23.5	Treatment	
Frac Gradient		15 Min		Spacers	10	Load and Breakdown		Total Job	74.5
Rates									
Circulating		Mixing	2	Displacement	2	Avg. Job	2		
Cement Left In Pipe	Amount	120 ft	Reason	BELOW THE RETAINER					
Frac Ring # 1 @	ID	Frac ring # 2 @	ID	Frac Ring # 3 @	ID	Frac Ring # 4 @	ID		
The Information Stated Herein Is Correct				Customer Representative Signature					

The Road to Excellence Starts with Safety

Sold To #: 300721	Ship To #: 2867039	Quote #:	Sales Order #: 9189271
Customer: WILLIAMS PRODUCTION RMT INC - EBUS		Customer Rep: Cady, Bob	
Well Name: GM	Well #: 22-23	API/UWI #: 05-045-20479	
Field: GRAND VALLEY	City (SAP): PARACHUTE	County/Parish: Garfield	State: Colorado
Legal Description:			
Lat: N 39.506 deg. OR N 39 deg. 30 min. 22.702 secs.		Long: W 108.083 deg. OR W -109 deg. 55 min. 0.682 secs.	
Contractor: WORKOVER		Rig/Platform Name/Num: WORKOVER	
Job Purpose: Squeeze Perfs			Ticket Amount:
Well Type: Development Well		Job Type: Squeeze Perfs	
Sales Person: MAYO, MARK		Srv Supervisor: JAMISON, PRICE	MBU ID Emp #: 229155

Activity Description	Date/Time	Cht #	Rate bbl/min	Volume bbl		Pressure psig		Comments
				Stage	Total	Tubing	Casing	
Call Out	01/17/2012 03:00							
Depart Yard Safety Meeting	01/17/2012 05:00							WITH HES, 1 F550, 1 BULK CEMENT BODYLOAD, 1 RCM PUMP TRUCK
Crew Leave Yard	01/17/2012 05:15							
Arrive At Loc	01/17/2012 07:00							
Assessment Of Location Safety Meeting	01/17/2012 07:05							WITH HES
Pre-Rig Up Safety Meeting	01/17/2012 07:15							
Pre-Job Safety Meeting	01/17/2012 13:00							WITH HES AND RIG CREW
Start Job	01/17/2012 13:31							2 3/8 4.7# TUBING SET DOWN TO RETAINER @ 6238, 2 PERFS @ 6358, BRIDGE PLUG @ 6600, RIG HELD 700 PSI ON THE BACKSIDE DURING THE CEMENT JOB
Prime Pumps	01/17/2012 13:35		1.5		2	830.0		
Test Lines	01/17/2012 13:38						5165.0	
Injection Test	01/17/2012 13:43		2		5	1221.0		FRESH WATER
ISIP	01/17/2012 13:48					775.0		
Pump Water	01/17/2012 13:50		2		5	1270.0		FRESH WATER
Activity Description	Date/Time	Cht	Rate bbl/min	Volume bbl		Pressure psig		Comments

Sold To #: 300721

Ship To #: 2867039

Quote #:

Sales Order #:

9189271

SUMMIT Version: 7.3.013

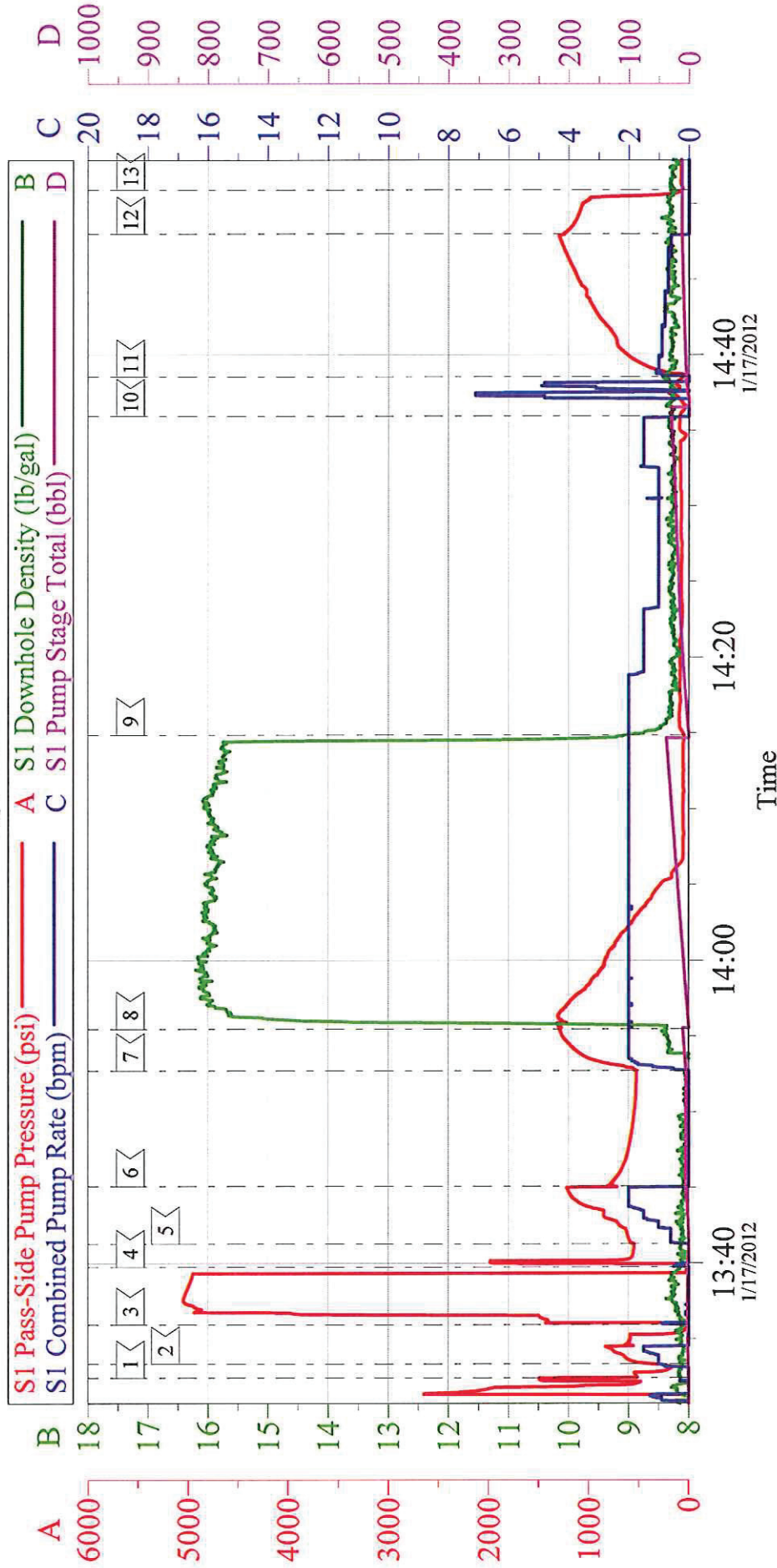
Wednesday, January 18, 2012 07:25:00

Cementing Job Log

		#		Stage	Total	Tubing	Casing	
Pump Cement	01/17/2012 13:57		2		41	1265. 0		200 SKS SQUEEZECEM PUMPED @ 15.8#, YIELD 1.15, WATER 5.0
Pump Displacement	01/17/2012 14:16		2		23.5	1301. 0		FRESH WATER, AT 16 BBLs GONE FLUID WAS NOT MOVING, SHUTDOWN AND REPRIMED PUMP AND ONCE WE STARTED PUMPING DOWN THE WELL WE GAIN PRESSURE AND WAS MOVING FLUID AGAIN, AT 10 GONE SLOWED RATE TO 1.5BPM-88 PSI, 14 GONE SLOWED TO 1BPM-79 PSI PUMPED THEREST OF THE JOB AT 1 BPM
Shutdown	01/17/2012 14:50							RIG REVERSED OUT WELL AND CIRCULATED 1 BBL OF CEMENT BACK TO THE PIT= 5 SKS OF CEMENT
End Job	01/17/2012 15:00							
Rig-Down Equipment	01/17/2012 15:30							
Crew Leave Location	01/17/2012 17:00							THANK YOU FOR USING GRAND JUNCTION HALLIBURTON CEMENT, BILL JAMISON AND CREW

WILLIAMS GM 22-23

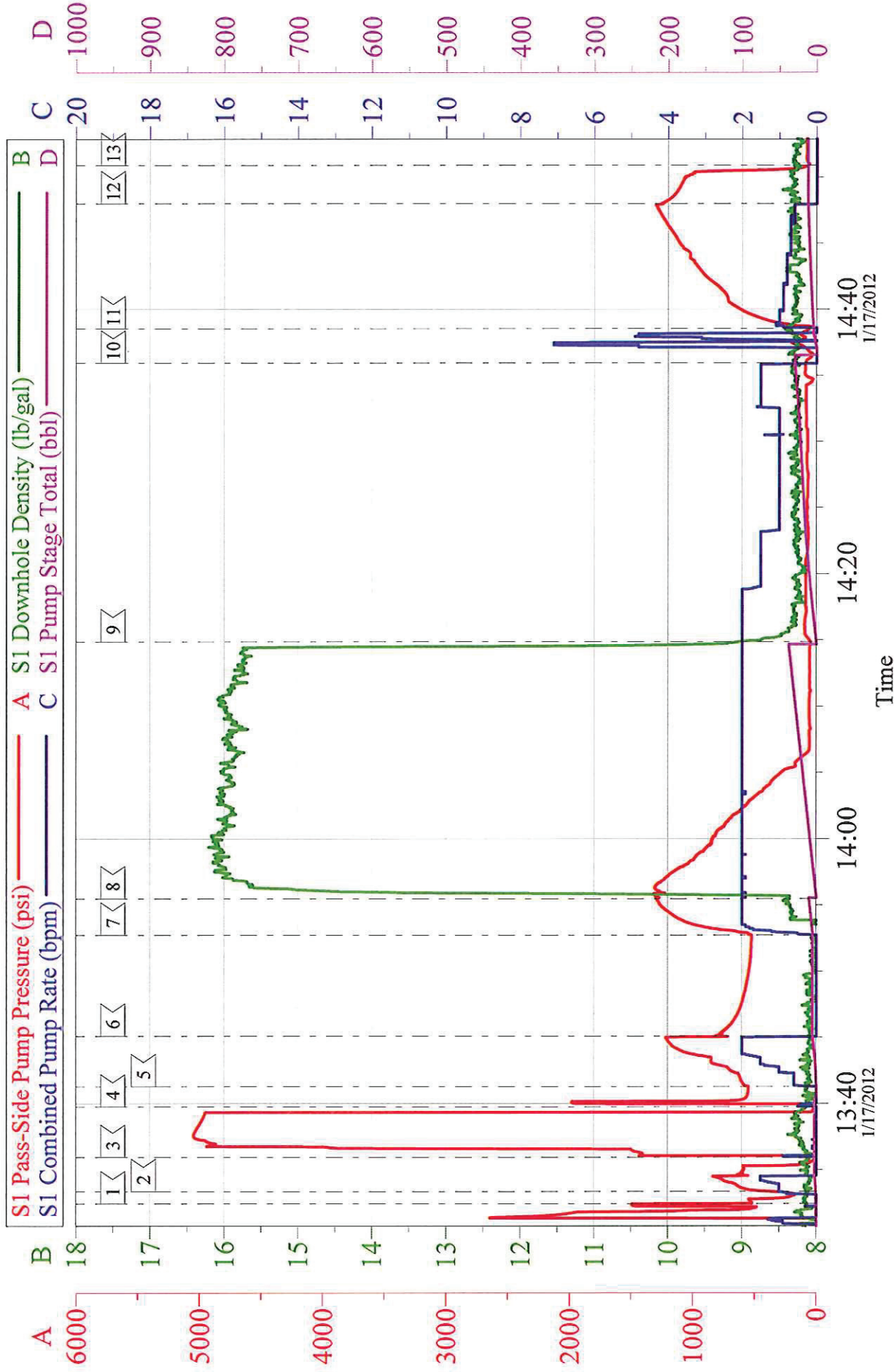
SQUEEZE



Customer: WILLIAMS	Job Date: 17-Jan-2012	Sales Order #: 9189271
Well Description: GM 22-23	Job Type: RE-CEMENT	ADC Used: YES
Company Rep: BOB CADY	Cement Supervisor: BILL JAMISON	Elite #6 SHANE JENSEN

WILLIAMS GM 22-23

SQUEEZE



Customer:	WILLIAMS	Job Date:	17-Jan-2012	Sales Order #:	9189271
Well Description:	GM 22-23	Job Type:	RE-CEMENT	ADC Used:	YES
Company Rep:	BOB CADY	Cement Supervisor:	BILL JAMISON	Elite #6	SHANE JENSEN