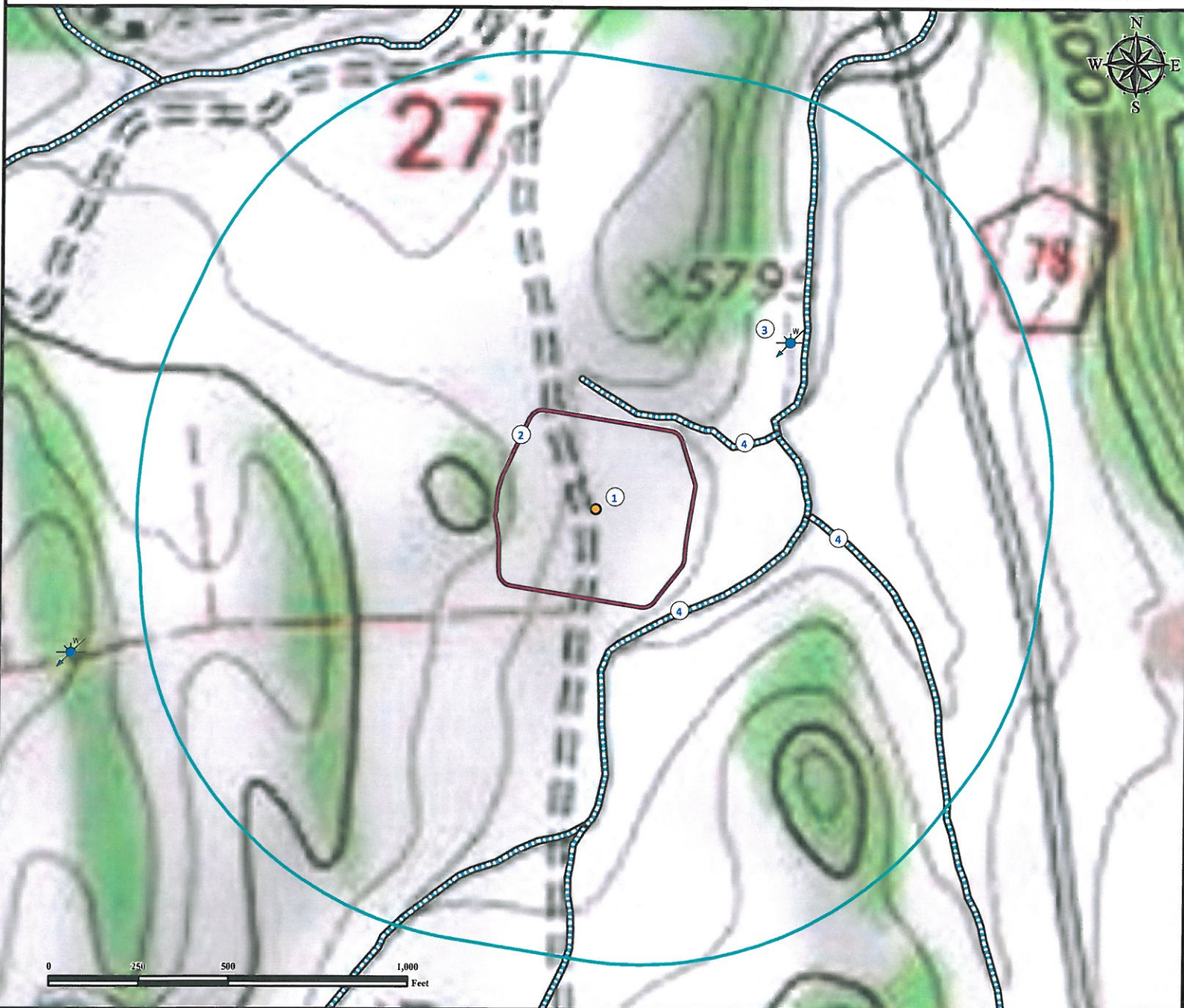


# Hydrology Map

## SLANOVICH #34-27

NW¼ SE¼ SECTION 27, TOWNSHIP 19 SOUTH, RANGE 70 WEST OF THE 6TH PRINCIPAL MERIDIAN



1. Proposed well SLANOVICH #34-27.
2. Operational Disturbance area.
3. Water well (#170538) is  $\pm 712'$  NE.
4. Intermittent streams are  $\pm 286'$  NE,  $\pm 367'$  SE and  $\pm 590'$  E.

### Legend

- Proposed Well
- Disturbance Area
- Intermittent Stream
- Water Well
- 1000' Radius

### Reference Location

\*\* All Measurements are Made from  
Reference Well SLANOVICH #34-27\*\*

Lat: 38.363705° Long: -105.207263° (NAD83)  
Elevation: 5758 Feet



Use our resources to find yours!  
[www.petro-fs.com](http://www.petro-fs.com)  
(303) 928-7128

Field Date: 02/24/2012  
Drafting Date: 03/6/2012  
Drafter: DMM  
Checked By: BHF

Data Sources:  
TOPO courtesy USGS  
Water wells courtesy CDOWR  
Water Lines courtesy National Hydrology  
Database (NHD)

Prepared for:

**WINN EXPLORATION**  
**Co., INC.**