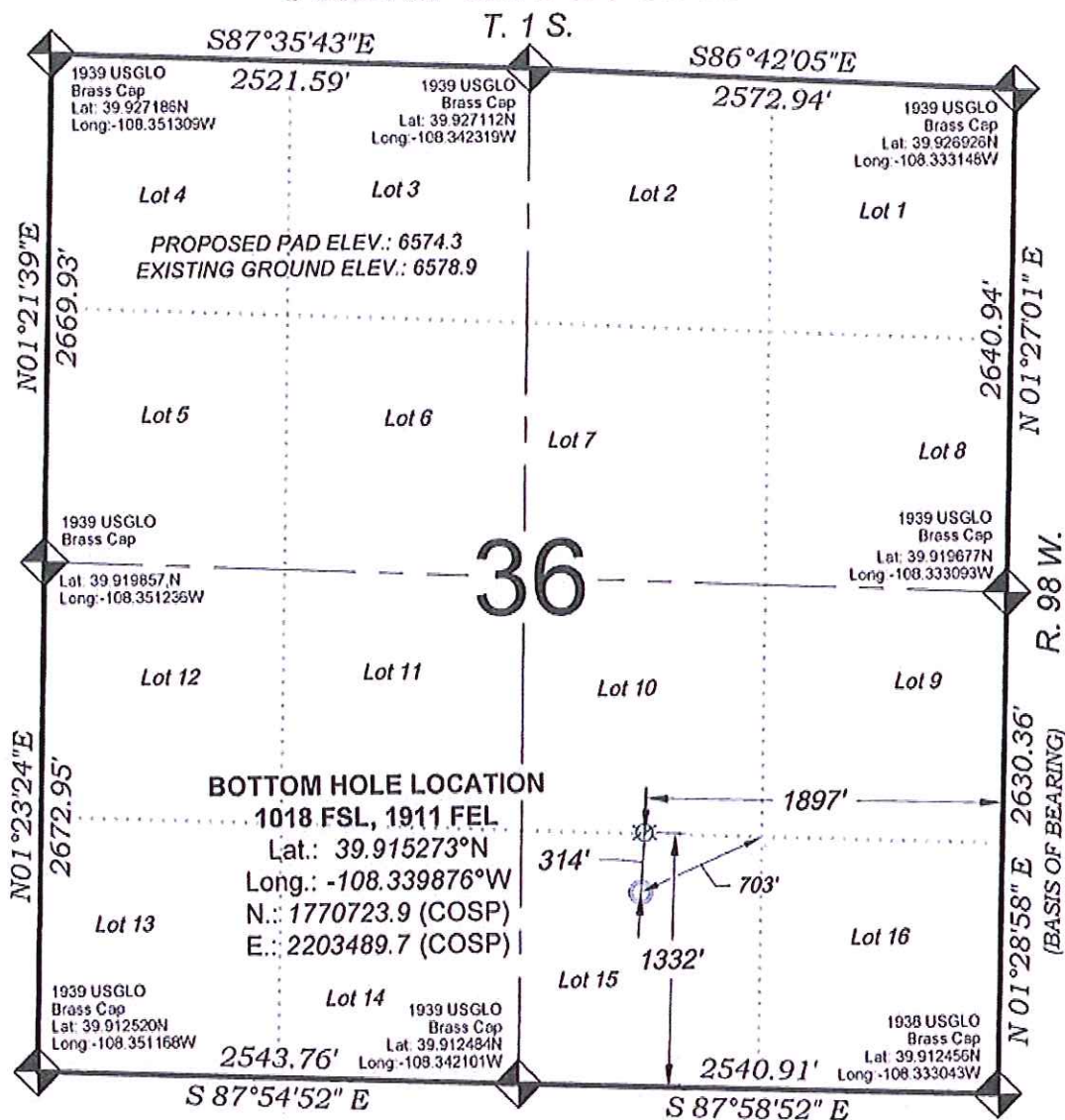


# Federal RGU 34-36-198



1332 FSL  
1897 FEL  
**LATITUDE**  
39.916133°N  
**LONGITUDE**  
-108.339832°W  
**NORTHING**  
1771036.6  
**EASTING**  
2203511.9



THERE ARE NO VISIBLE  
IMPROVEMENTS WITHIN 400'  
OF THIS LOCATION

## SURVEYORS STATEMENT

I, MICHAEL J. LANGHORNE, A REGISTERED LAND SURVEYOR IN THE STATE OF COLORADO DO HEREBY CERTIFY THAT THE SURVEY SHOWN HEREON WAS PREPARED UNDER MY DIRECT SUPERVISION AND HAS BEEN STAKED ON THE GROUND AS SHOWN ON THE PLAT AND CHECKING THAT THIS MAP IS A TRUE REPRESENTATION THEREOF.



MICHAEL J. LANGHORNE, COLORADO REGISTRATION NO. 36572  
FOR AND ON BEHALF OF  
BOOKCLIFF SURVEY SERVICES, INC.

## REFERENCES

- 1) DEPENDENT RESURVEY and SUDIVISION OF CERTAIN SECTIONS  
T. 1 S., R. 98 W., 6th P.M. (GLO PLAT)
- 2) U.S.G.S. QUAD: Rock School and Square S Ranch, CO



SURVEY DATE: 10/14/11  
MAP DATE: 1/11/12  
SCALE: 1" = 1000'  
PLAT: 1 of 1  
PROJECT: Williams Highland

## - LEGEND -

- FIELD LOCATED SECTION MONUMENTS AS DESCRIBED
- FIELD SURVEYED WELL LOCATION
- CALCULATED BOTTOM HOLE LOCATION
- CALCULATED SECTION CORNER LOCATION

## NOTES

- 1) ELEVATIONS BASED ON N.A.V.D. 1988 PUBLISHED COORDINATES.
- 2) LATITUDES AND LONGITUDES ARE BASED ON NAD 83, PUBLISHED COORDINATES.
- 3) STATE PLANE COORDINATES ARE BASED ON COLORADO CENTRAL ZONE, U.S. SURVEY FEET.
- 4) ELEVATION MASK SET TO 15'
- 5) GPS OPERATOR J. KIRKPATRICK, OBSERVED A PDOP OF 1.8 FOR SURVEY POINT NUMBER 220.
- 6) SURFACE AND BOTTOM HOLE LOCATIONS ARE MEASURED 90° FROM SECTION LINES.

WELL LOCATION PLAT Prepared for:  
WPXENERGY.

WPX Energy Rocky Mountain, LLC  
SW1/4 SE1/4, SECTION 36  
T. 1 S., R. 98 W. of the 6th. P.M.  
Rio BLANCO COUNTY, COLORADO