



Petroleum Development Corporation  
 WASTE MANAGEMENT #12-26A  
 SWNW 26 3N 64W 6 PM  
 Weld County, CO

Current Wellbore Schematice - NOT TO SCALE!!!

4/1/2012

API#: 05-123-25206

GL Elevation: 4850'

Surface Casing:
8 5/8" @ 754 with 420' sx cmt.

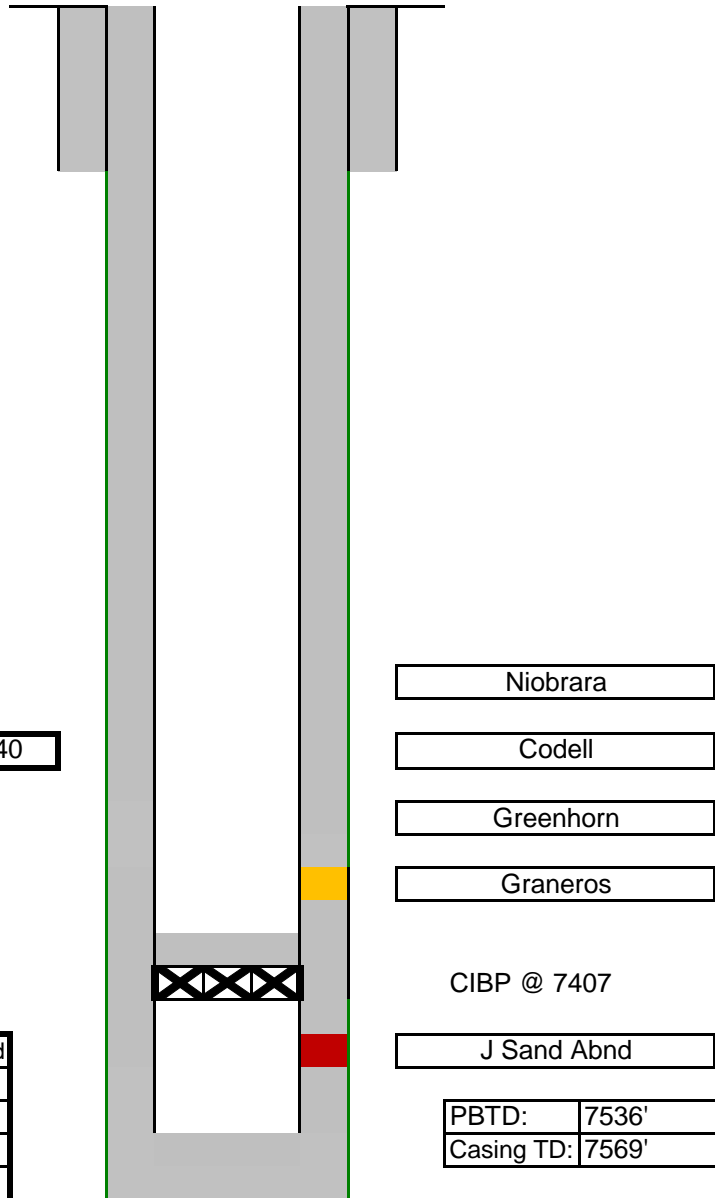
Production Casing:
41/2" @ 7569' with 455 sks

New:	Grenaros 7330-7340
------	--------------------

Old:	J Sand 7431'-7466' Abnd
	0
	0
	0

NOTES

Set CIBP at 74-7, dump 2 sks cmt, perf Grenaros 7330-7340



CIBP @ 7407

J Sand Abnd

PBTD:	7536'
Casing TD:	7569'