

ANADARKO PETROLEUM CORP EBUSINESS
PO BOX 4995 - DO NOT MAIL
THE WOODLANDS, Texas

Frank 35-31

PATTERSON 184

Post Job Summary **Cement Surface Casing**

Prepared for: Scott Tannehill
Date Prepared: 1/21/09
Version: 1

Service Supervisor: Irv Collins

Submitted by: Tim Gilchrist

HALLIBURTON

HALLIBURTON

Service Supervisor Reports

Job Log

Date/Time	Chart #	Activity Code	Pump Rate	Cum Vol	Pump	Pressure (psig)	Comments
01/20/2009 07:00		Arrive At Loc					
01/20/2009 07:40		Safety Meeting					
01/20/2009 08:55		Test Lines					1800
01/20/2009 08:56		Pump Spacer 1	5	30		50.0	RIG WATER
01/20/2009 09:03		Pump Cement	5	81		80.0	300SK'S OF CMT AT 14.2# MIXED WITH RIG WATER
01/20/2009 09:20		Shutdown					
01/20/2009 09:20		Drop Top Plug					
01/20/2009 09:20		Pump Displacement	5	46.1		200.0	RIG WATER
01/20/2009 09:44		Shut In Well				230.0	DID NOT HIT BAFFLE
01/20/2009 09:45		End Job					20BBL'S TO THE PIT

The Road to Excellence Starts with Safety

Sold To #: 300466	Ship To #: 2708882	Quote #:	Sales Order #: 6453925
Customer: ANADARKO PETROLEUM CORP EBUSINESS		Customer Rep: BENJAMIN, BEN	
Well Name: Frank		Well #: 35-31	API/UWI #:
Field: DJ	City (SAP): PLATTEVILLE	County/Parish: Weld	State: Colorado
Contractor: PATTERSON		Rig/Platform Name/Num: PATTERSON 184	
Job Purpose: Cement Surface Casing			
Well Type: Development Well		Job Type: Cement Surface Casing	
Sales Person: FRAZER, STEPHEN		Srvc Supervisor: COLLINS, IRVIN	MBU ID Emp #: 401749

Job Personnel

HES Emp Name	Exp Hrs	Emp #	HES Emp Name	Exp Hrs	Emp #	HES Emp Name	Exp Hrs	Emp #
BARRAS, JOSEPH Corey		405168	COLLINS, IRVIN Douglas		401749	FLORES, RAMON Gustavo		332378
HERRERA, JOHN G		121750	KELEHER, JASON E		437348	SAULIS, GREGORY Joseph		417333

Equipment

HES Unit #	Distance-1 way	HES Unit #	Distance-1 way	HES Unit #	Distance-1 way	HES Unit #	Distance-1 way
10822531C	24 mile	10824253C	24 mile	10972458	24 mile		

Job Hours

Date	On Location Hours	Operating Hours	Date	On Location Hours	Operating Hours	Date	On Location Hours	Operating Hours
			<i>Total is the sum of each column separately</i>					

Job				Job Times			
Formation Name	Formation Depth (MD)	Top	Bottom	Called Out	Date	Time	Time Zone
				On Location	20 - Jan - 2009	07:30	MST
Form Type			BHST	Job Started	20 - Jan - 2009	08:55	MST
Job depth MD	772. ft		Job Depth TVD	772. ft	Job Completed	20 - Jan - 2009	09:45
Water Depth			Wk Ht Above Floor	4. ft	Departed Loc	20 - Jan - 2009	10:00
Perforation Depth (MD)	<i>From</i>		<i>To</i>				

Well Data

Description	New / Used	Max pressure psig	Size in	ID in	Weight lbm/ft	Thread	Grade	Top MD ft	Bottom MD ft	Top TVD ft	Bottom TVD ft
Open Hole				12.25				.	788.	.	788.
Surface Casing 8 5/8	New		8.625	8.097	24.			.	772.	.	772.

Tools and Accessories

Type	Size	Qty	Make	Depth	Type	Size	Qty	Make	Depth	Type	Size	Qty	Make
Guide Shoe					Packer					Top Plug			
Float Shoe					Bridge Plug					Bottom Plug			
Float Collar					Retainer					SSR plug set			
Insert Float										Plug Container			
Stage Tool										Centralizers			

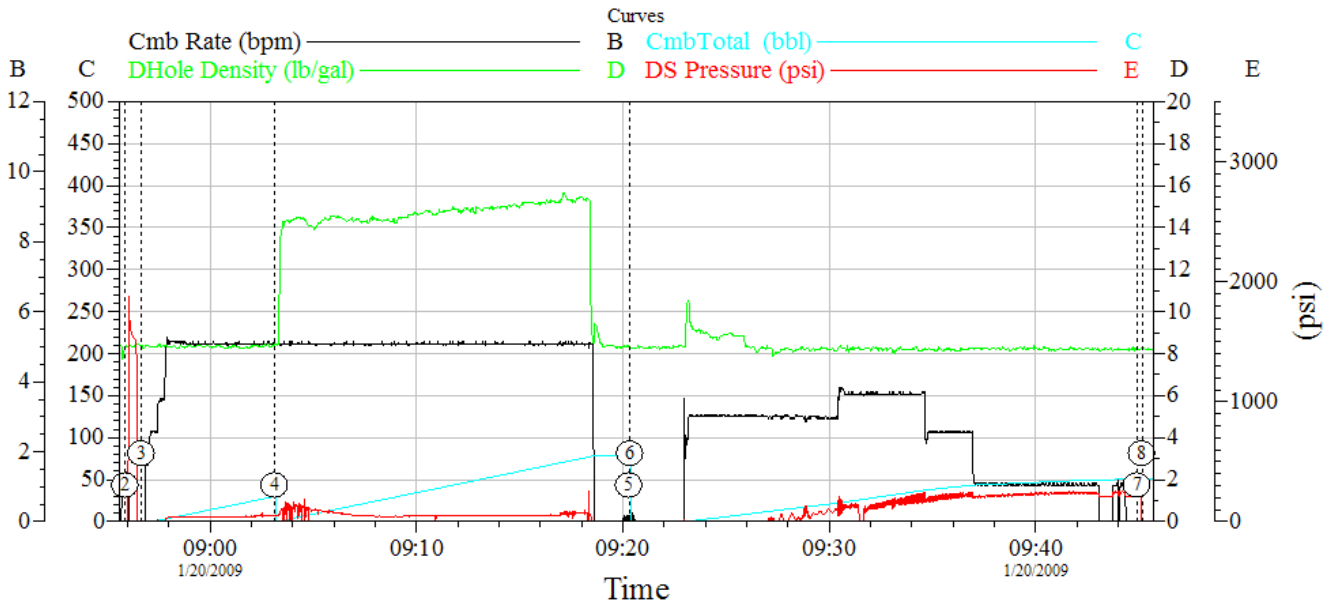
Miscellaneous Materials

Gelling Agt	Conc	Surfactant	Conc	Acid Type	Qty	Conc	%
Treatment Fld	Conc	Inhibitor	Conc	Sand Type	Size	Qty	

Fluid Data									
Stage/Plug #: 1									
Fluid #	Stage Type	Fluid Name	Qty	Qty uom	Mixing Density lbm/gal	Yield ft ³ /sk	Mix Fluid Gal/sk	Rate bbl/min	Total Mix Fluid Gal/sk
1	Fresh Ahead			bbl	8.33	.0	.0	.0	
2	Surface Cement 14.2#	SWIFTCEM (TM) SYSTEM (452990)		sacks	14.2	1.51	7.53		7.53
7.527 Gal		FRESH WATER							
3	DISPLACEMENT			bbl	.	.0	.0	.0	
Calculated Values			Pressures			Volumes			
Displacement		Shut In: Instant		Lost Returns		Cement Slurry		Pad	
Top Of Cement		5 Min		Cement Returns		Actual Displacement		Treatment	
Frac Gradient		15 Min		Spacers		Load and Breakdown		Total Job	
Rates									
Circulating			Mixing			Displacement		Avg. Job	
Cement Left In Pipe		Amount	46 ft	Reason	Shoe Joint				
Frac Ring # 1 @	ID	Frac ring # 2 @	ID	Frac Ring # 3 @	ID	Frac Ring # 4 @	ID		
The Information Stated Herein Is Correct				Customer Representative Signature					

HALLIBURTON

ANADARKO FRANK 35-31



Intersection		CR	C	DD	DP	Intersection		CR	C	DD	DP		
①	Start Job	08:55:34	0.000	8.452	-49.51	②	Test Lines	08:55:54	1.369	0.229	-32.02		
③	Pump Spacer 1	08:56:41	0.000	0.436	8.359	-28.15	④	Pump Cement	09:03:08	5.083	30.02	8.444	50.48
⑤	Drop Plug	09:20:18	0.196	78.23	8.287	-53.39	⑥	Pump Displacement	09:20:21	0.130	78.23	8.316	-54.37
⑦	Shut-in Well	09:44:55	0.000	50.65	8.230	209.7	⑧	End Job	09:45:09	0.000	50.65	8.259	-54.37

Customer: ANADARKKO FRANK 35-31
Well Description: SURFFACE

Job Date: 01-20-09
UWI:

Ticket #: 6453925

CemWin v1.7.2
20-Jan-09 09:46