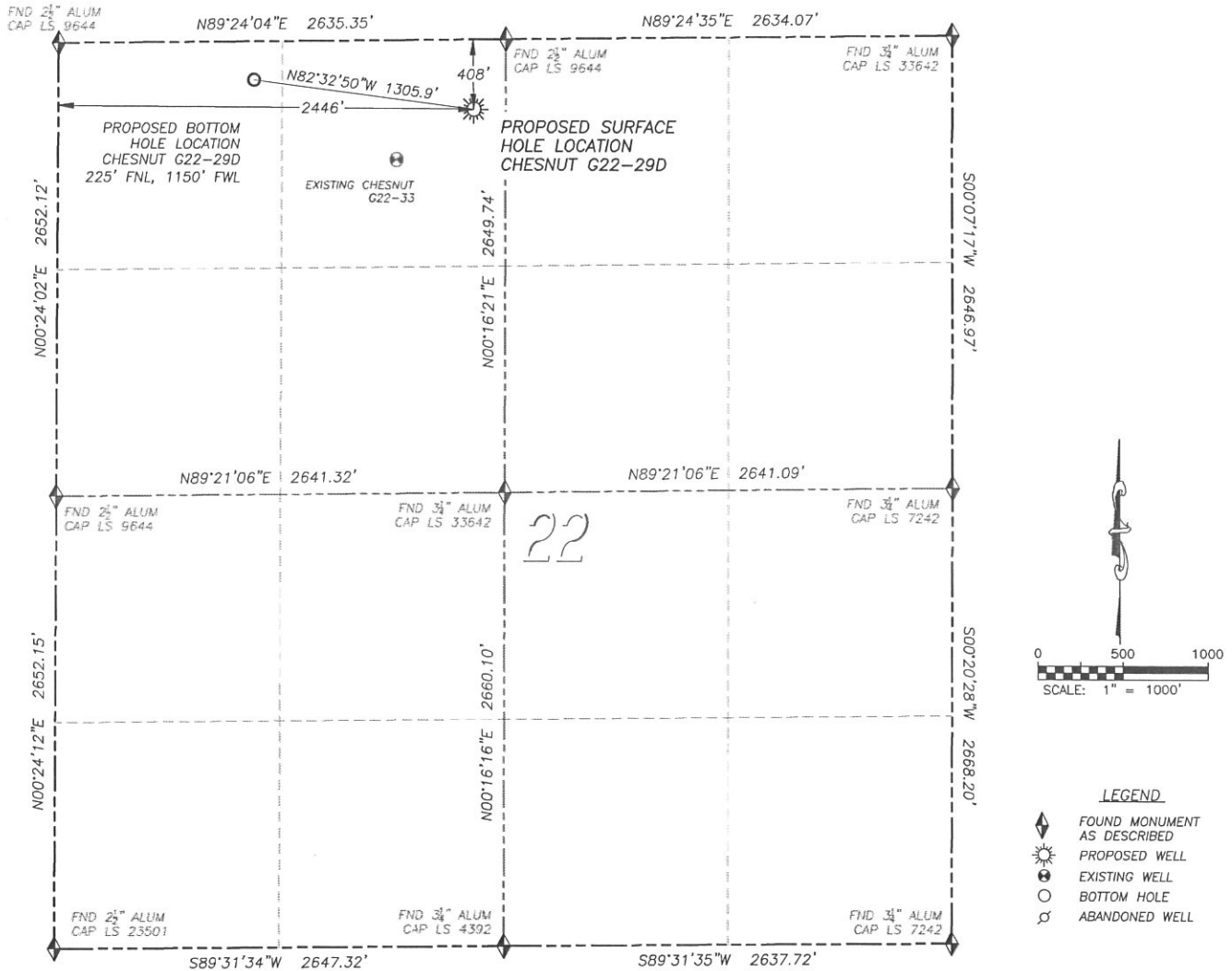


WELL LOCATION CERTIFICATE CHESNUT G22-29D

SECTION 22, TOWNSHIP 4 NORTH, RANGE 65 WEST OF THE 6TH PRINCIPAL MERIDIAN

**NAD 83 LATITUDE AND LONGITUDE****CHESNUT G22-29D SURFACE HOLE:**

LATITUDE: N40.30405°
 LONGITUDE: W104.64990°
 ELEVATION: 4735'
 FOOTAGE: 408' FNL, 2446' FWL
 PDOP: 1.6
 QTR/QTR: NE4/NW4
 PROP LINE: 190'± EAST

BOTTOM HOLE:

LATITUDE: N40.30455°
 LONGITUDE: W104.65453°
 FOOTAGE: 225' FNL, 1150' FWL

NEAREST EXISTING WELL:

CHESNUT G22-3 SURFACE HOLE
 LATITUDE: N40.30325°
 LONGITUDE: W104.65154°
 ELEVATION: 4744'
 543' SOUTHWEST

IN ACCORDANCE WITH A REQUEST FROM CJ PIETRI OF NOBLE ENERGY INC., DALEY LAND SURVEYING, INC. HAS DETERMINED THE SURFACE LOCATION OF THE CHESNUT G22-29D WELL TO BE 408' FNL, 2446' FWL, AS MEASURED AT NINETY (90) DEGREES FROM THE SECTION LINES OF SECTION 22, TOWNSHIP 4 NORTH, RANGE 65 WEST OF THE 6TH PRINCIPAL MERIDIAN, WELD COUNTY, COLORADO. THE BOTTOM HOLE LOCATION, PROVIDED BY THE CLIENT, IS TO BE 225' FNL, 1150' FWL.

I HEREBY CERTIFY THAT THIS WELL LOCATION CERTIFICATE WAS PREPARED BY ME OR UNDER MY DIRECT SUPERVISION, THAT THE WORK WAS COMPLETED ON 12/06/2011 FOR AND ON BEHALF OF NOBLE ENERGY, INC., AND THAT THIS MAP DOES NOT REPRESENT A BOUNDARY SURVEY, IT IS NOT A LAND SURVEY PLAT OR AN IMPROVEMENT SURVEY PLAT AND IT IS NOT TO BE RELIED UPON FOR THE ESTABLISHMENT OF FENCE, BUILDING OR OTHER FUTURE IMPROVEMENT LINES.

NOTICE: According to Colorado law you MUST commence any legal action based upon any defect in this W.L.C. within three years after you first discover such defect. In no event may any action based upon any such defect in this W.L.C. be commenced more than ten years from the date of the certification shown herein.

FOR AND ON BEHALF OF
 DALEY LAND SURVEYING INC.,
 Robert Daley, PLS 35597