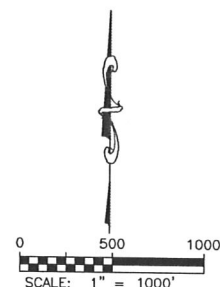
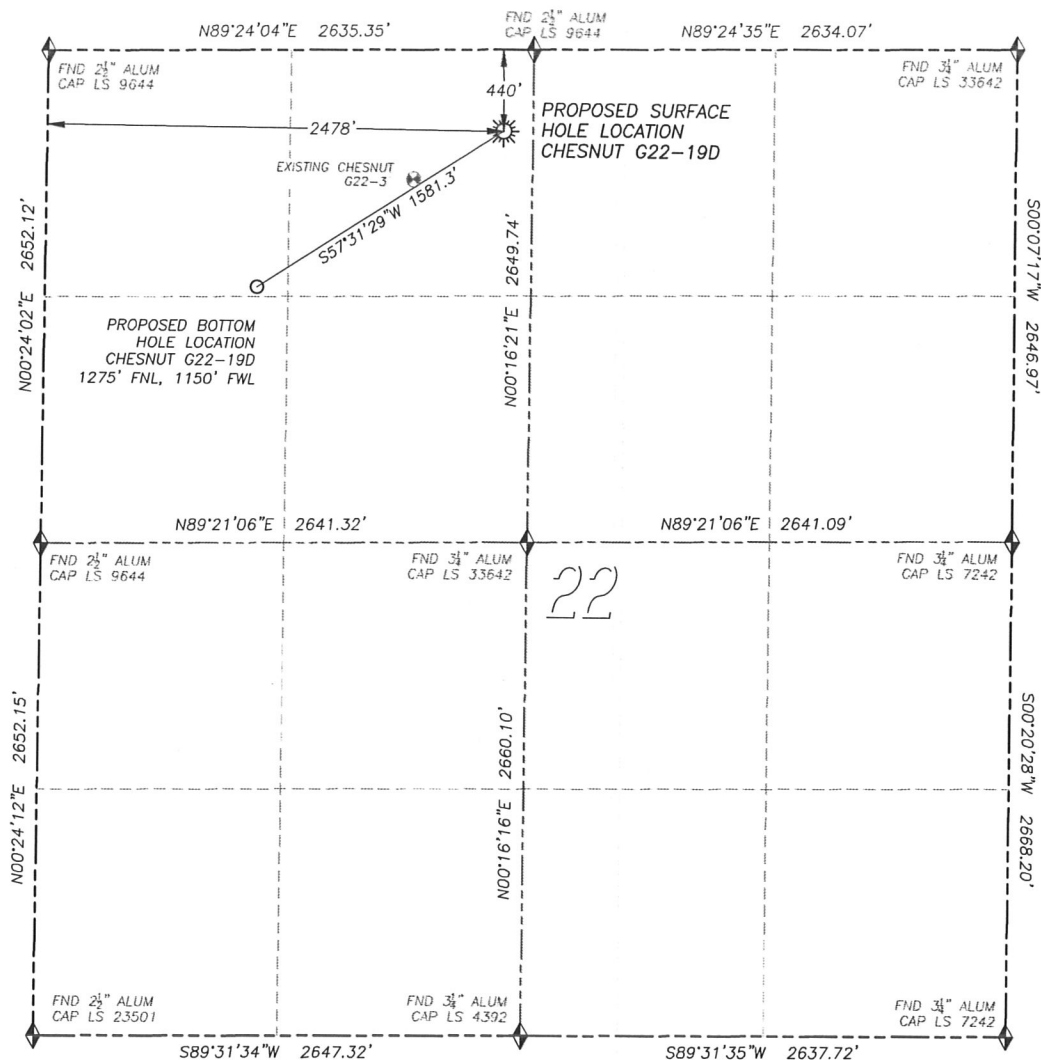


WELL LOCATION CERTIFICATE CHESNUT G22-19D

SECTION 22, TOWNSHIP 4 NORTH, RANGE 65 WEST OF THE 6TH PRINCIPAL MERIDIAN



LEGEND

- ◆ FOUND MONUMENT AS DESCRIBED
- ☼ PROPOSED WELL
- ⊙ EXISTING WELL
- BOTTOM HOLE
- ⊘ ABANDONED WELL

NAD 83 LATITUDE AND LONGITUDE

CHESNUT G22-19D SURFACE HOLE:

LATITUDE: N40.30396°
LONGITUDE: W104.64978°
ELEVATION: 4735'
FOOTAGE: 440' FNL, 2478' FWL
PDOP: 1.7
QTR/QTR: NE4/NW4
PROP LINE: 158'± EAST

BOTTOM HOLE:

LATITUDE: N40.30167°
LONGITUDE: W104.65459°
FOOTAGE: 1275' FNL, 1150' FWL

NEAREST EXISTING WELL:

CHESNUT G22-3 SURFACE HOLE
LATITUDE: N40.30325°
LONGITUDE: W104.65154°
ELEVATION: 4744'
555' SOUTHWEST

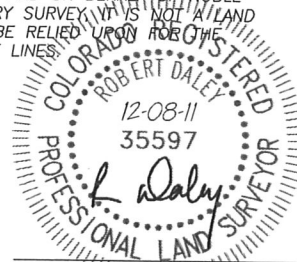
IN ACCORDANCE WITH A REQUEST FROM CJ PIETRI OF NOBLE ENERGY INC., DALEY LAND SURVEYING, INC. HAS DETERMINED THE SURFACE LOCATION OF THE CHESNUT G22-19D WELL TO BE 440' FNL, 2478' FWL, AS MEASURED AT NINETY (90) DEGREES FROM THE SECTION LINES OF SECTION 22, TOWNSHIP 4 NORTH, RANGE 65 WEST OF THE 6TH PRINCIPAL MERIDIAN, WELD COUNTY, COLORADO. THE BOTTOM HOLE LOCATION, PROVIDED BY THE CLIENT, IS TO BE 1275' FNL, 1150' FWL.

I HEREBY CERTIFY THAT THIS WELL LOCATION CERTIFICATE WAS PREPARED BY ME OR UNDER MY DIRECT SUPERVISION, THAT THE WORK WAS COMPLETED ON 12/06/2011 FOR AND ON BEHALF OF NOBLE ENERGY, INC., AND THAT THIS MAP DOES NOT REPRESENT A BOUNDARY SURVEY, NOR A LAND SURVEY PLAT OR AN IMPROVEMENT SURVEY PLAT AND IT IS NOT TO BE RELIED UPON FOR THE ESTABLISHMENT OF FENCE, BUILDING OR OTHER FUTURE IMPROVEMENT LINES.

NOTES:

- 1) BEARINGS FOR THIS MAP ARE ASSUMED AND BASED UPON GPS OBSERVATIONS MADE BETWEEN MONUMENTS LOCATED AT THE NORTHWEST CORNER AND NORTH QUARTER CORNER OF SECTION 22, T.4N., R.65W.
- 2) HORIZONTAL DATUM IS NAD83.
- 3) VERTICAL DATUM IS NAVD88 AND ORIGINATES FROM THE LOCAL C.O.R.S. NETWORK, UTILIZING THE GEOID09 MODEL.
- 4) SEE LOCATION DRAWING FOR VISIBLE IMPROVEMENTS WITHIN 400' OF PROPOSED DISTURBED AREA.
- 5) SURFACE USE: AGRICULTURAL.

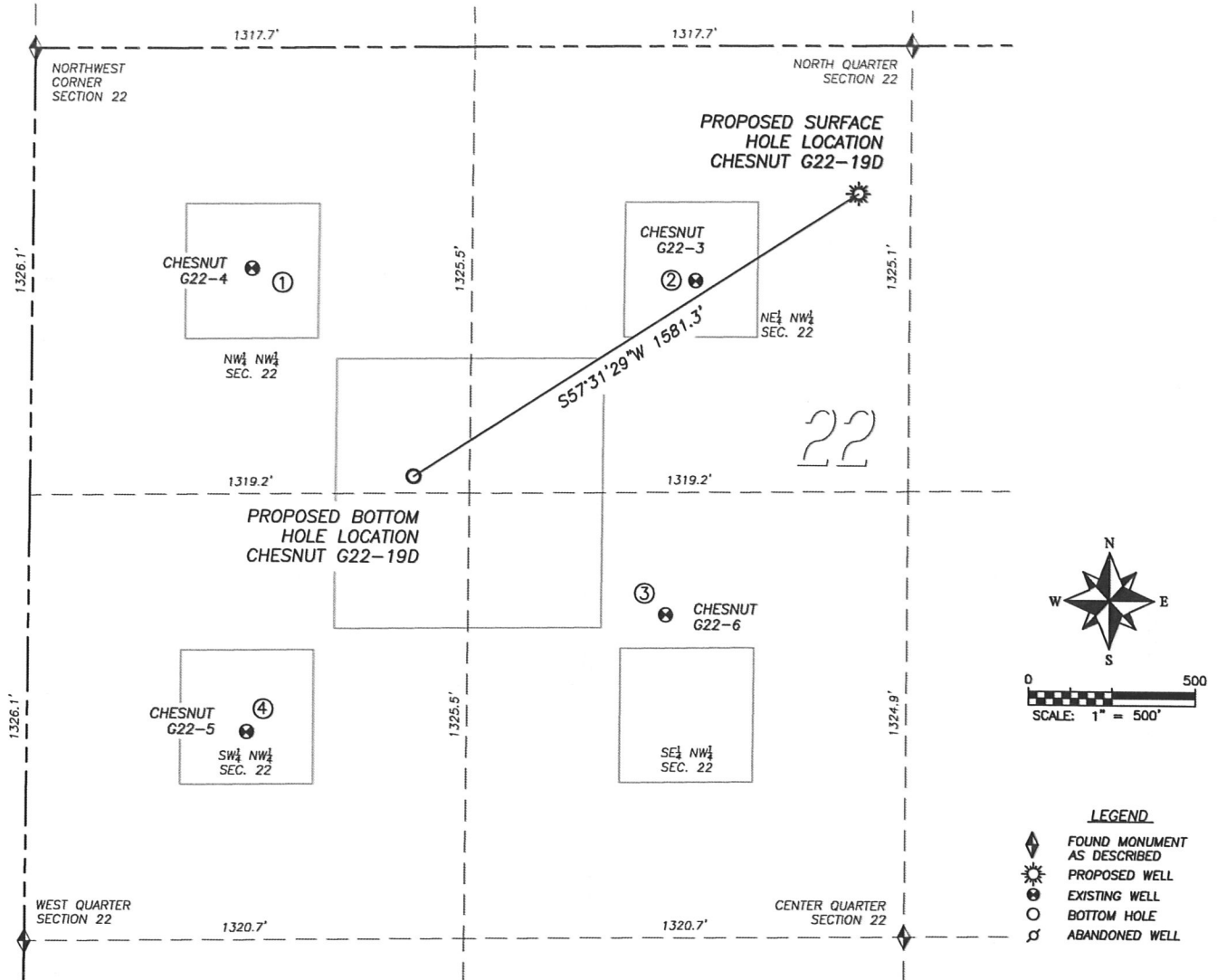
NOTICE: According to Colorado law you MUST commence any legal action based upon any defect in this W.L.C. within three years after you first discover such defect. In no event may any action based upon any such defect in this W.L.C. be commenced more than ten years from the date of the certification shown herein.



FOR AND ON BEHALF OF
DALEY LAND SURVEYING INC.,
Robert Daley, PLS 35597

SITE SKETCH CHESNUT G22-19D

SECTION 22, TOWNSHIP 4 NORTH, RANGE 65 WEST OF THE 6TH PRINCIPAL MERIDIAN



①

CHESNUT G22-4

NW/NW SEC. 22
 655' FNL, 657' FWL
 785' NW OF PROPOSED
 BOTTOM HOLE LOCATION
 LAT. N40.30337°
 LONG. W104.65632°
 EL: 4775'
 PDOP 2.3

②

CHESNUT G22-3

NE/NW SEC. 22
 697' FNL, 1991' FWL
 1029' NE OF PROPOSED
 BOTTOM HOLE LOCATION
 LAT. N40.30325°
 LONG. W104.65154°
 EL: 4744'
 PDOP 1.7

③

CHESNUT G22-6

SE/NW SEC. 22
 1689' FNL, 1913' FWL
 861' SE OF PROPOSED
 BOTTOM HOLE LOCATION
 LAT. N40.30053°
 LONG. W104.65188°
 EL: 4756'
 PDOP 2.4

④

CHESNUT G22-5

SW/NW SEC. 22
 2033' FNL, 659' FWL
 911' SW OF PROPOSED
 BOTTOM HOLE LOCATION
 LAT. N40.29958°
 LONG. W104.65640°
 EL: 4782'
 PDOP 1.4

NOTES:
 1. THIS DOES NOT REPRESENT A
 BOUNDARY SURVEY
 2. HORIZONTAL DATUM IS NAD83
 3. VERTICAL DATUM IS NAVD88
 AND ORIGINATES FROM THE
 LOCAL C.O.R.S. NETWORK,
 UTILIZING THE GEOID09 MODEL