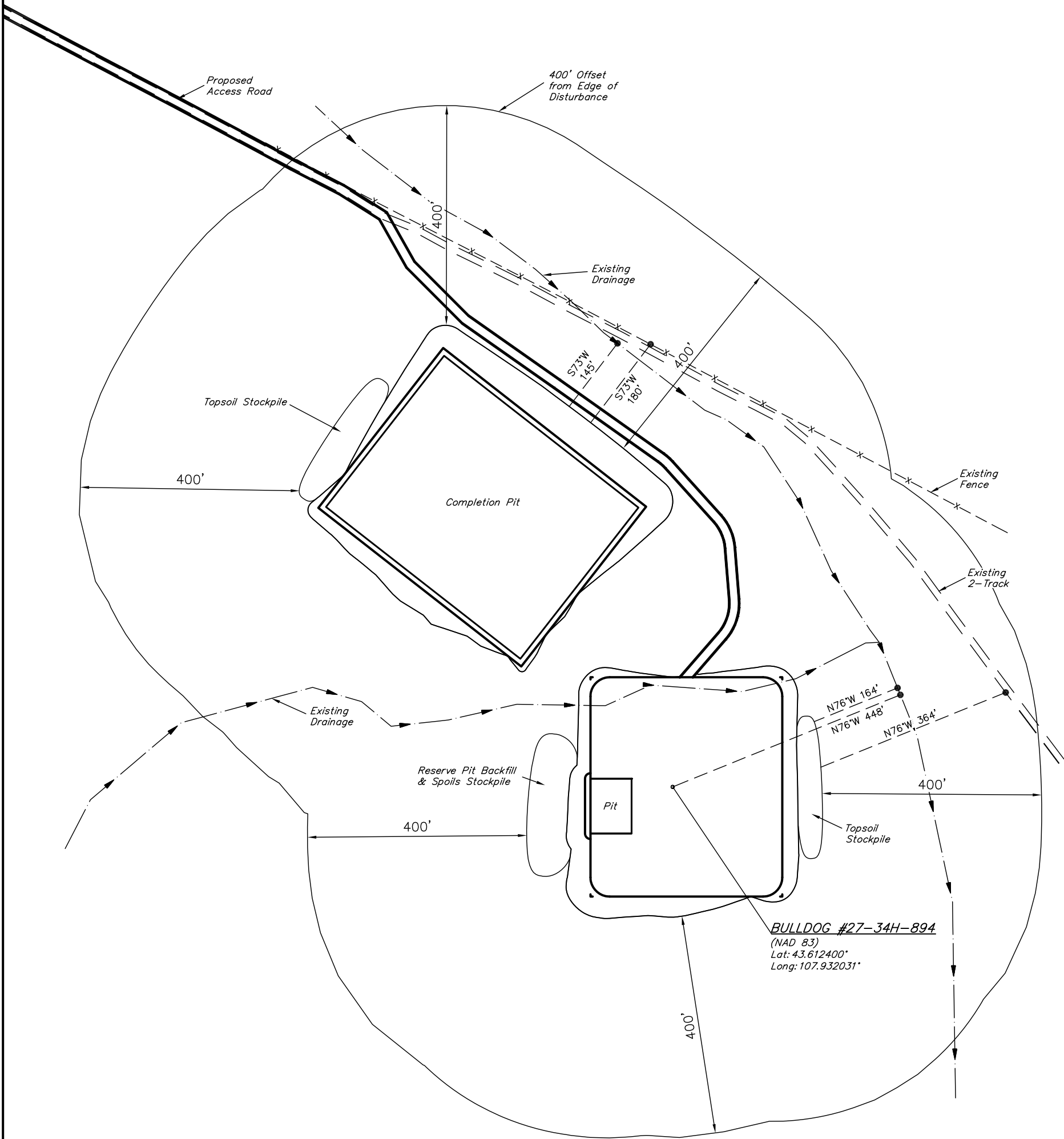


AXIA ENERGY  
ADDENDUM TO LEGAL PLAT FOR  
BULLDOG #27-34H-894  
SECTION 27, T8N, R94W, 6th P.M.  
1376' FSL 2304' FEL

SCALE: 1" = 200'  
DATE: 02-13-12  
DRAWN BY: J.M.H.

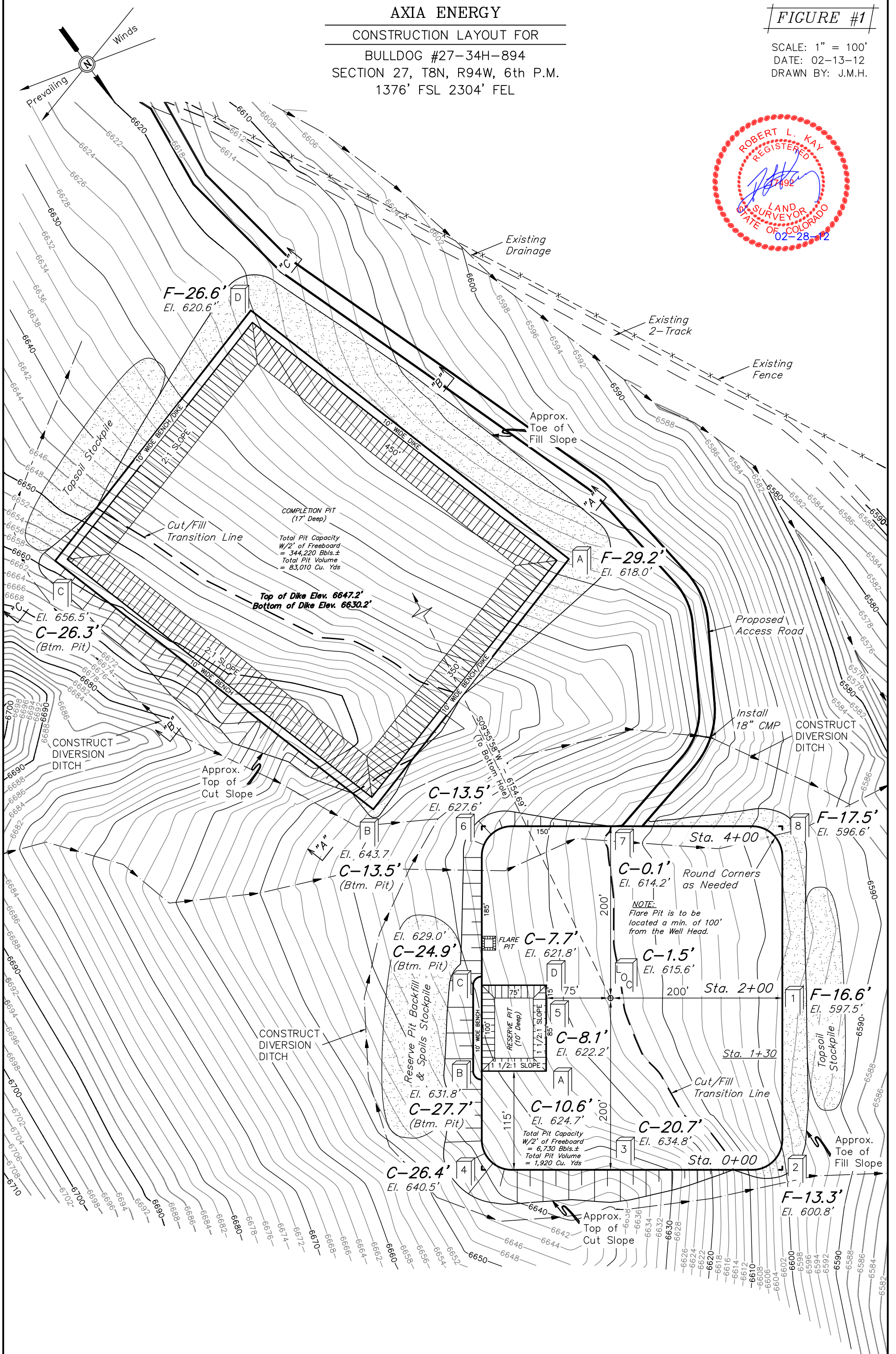


**BULLDOG #27-34H-894**  
(NAD 83)  
Lat: 43.612400°  
Long: 107.932031°

AXIA ENERGY  
CONSTRUCTION LAYOUT FOR  
BULLDOG #27-34H-894  
SECTION 27, T8N, R94W, 6th P.M.  
1376' FSL 2304' FEL

FIGURE #1

SCALE: 1" = 100'  
DATE: 02-13-12  
DRAWN BY: J.M.H.



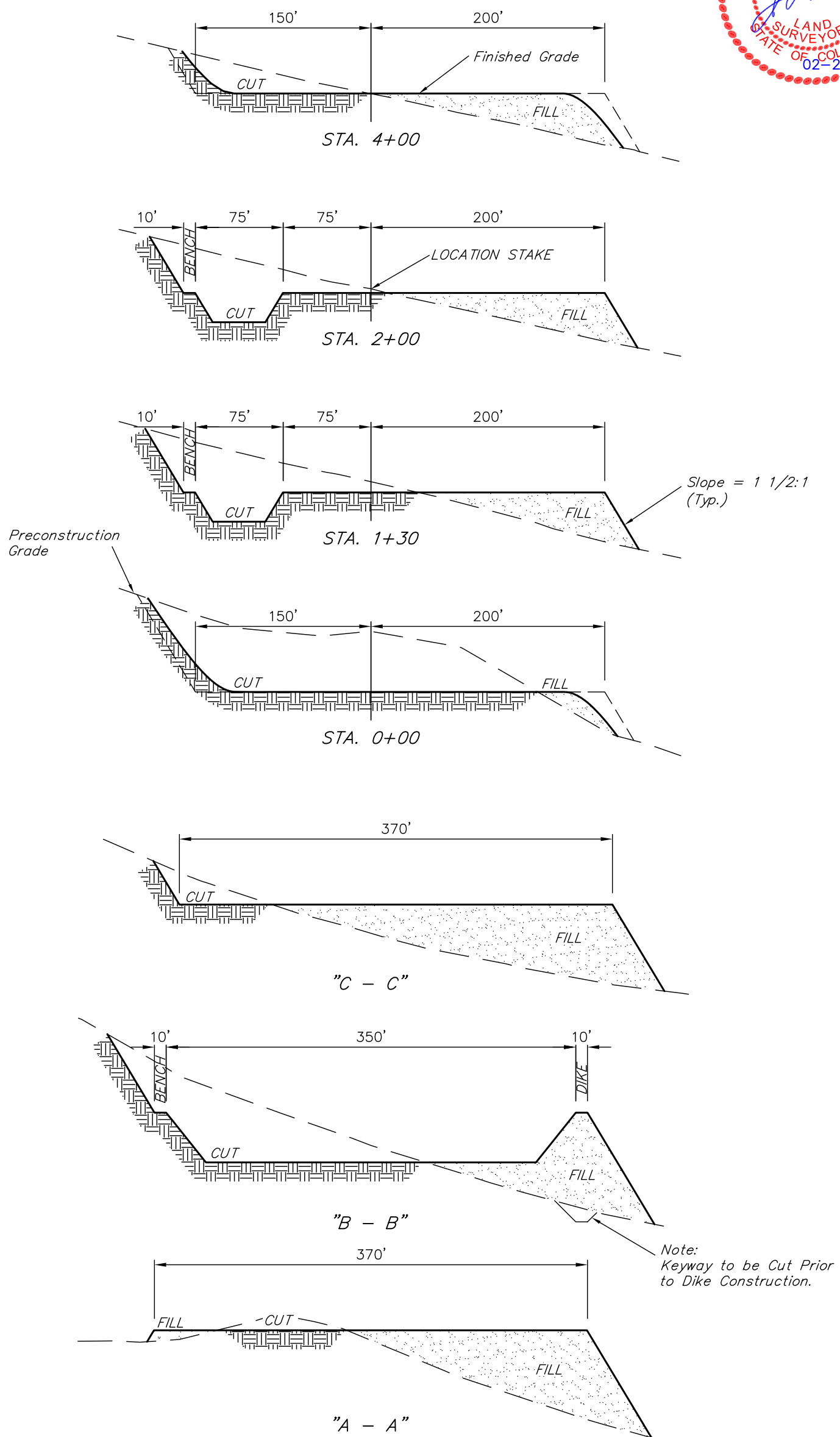
Elev. Ungraded Ground At Loc. Stake = 6615.6'  
FINISHED GRADE ELEV. AT LOC. STAKE = 6614.1'

FINISHED GRADE ELEV. COMPLETION PIT = 6647.2' UTAH ENGINEERING & LAND SURVEYING  
85 So. 200 East \* Vernal, Utah 84078 \* (435) 789-1017

1" = 40'  
X-Section  
Scale  
1" = 100'  
DATE: 02-13-12  
DRAWN BY: J.M.H.

AXIA ENERGY  
CONSTRUCTION LAYOUT CROSS SECTIONS FOR  
BULLDOG #27-34H-894  
SECTION 27, T8N, R94W, 6th P.M.  
1376' FSL 2304' FEL

FIGURE #2



NOTE:  
Topsoil should not be  
Stripped Below Finished  
Grade on Substructure Area.

\* NOTE:  
FILL QUANTITY INCLUDES  
5% FOR COMPACTION

COMPLETION PIT APPROXIMATE YARDAGES

(6") Topsoil Stripping = 4,530 Cu. Yds.  
Remaining Location = 54,880 Cu. Yds.  
TOTAL CUT = 59,410 CU. YDS.  
FILL = 54,880 CU. YDS.

EXCESS MATERIAL = 4,530 Cu. Yds.  
Topsoil = 4,530 Cu. Yds.

EXCESS UNBALANCE = 0 Cu. Yds.  
(After Interim Rehabilitation)

WELL PAD APPROXIMATE YARDAGES

(6") Topsoil Stripping = 3,440 Cu. Yds.  
Remaining Location = 33,210 Cu. Yds.  
TOTAL CUT = 36,650 CU. YDS.  
FILL = 26,470 CU. YDS.

EXCESS MATERIAL = 10,180 Cu. Yds.  
Topsoil & Pit Backfill = 4,400 Cu. Yds.  
(1/2 Pit Vol.)

EXCESS UNBALANCE = 5,780 Cu. Yds.  
(After Interim Rehabilitation)

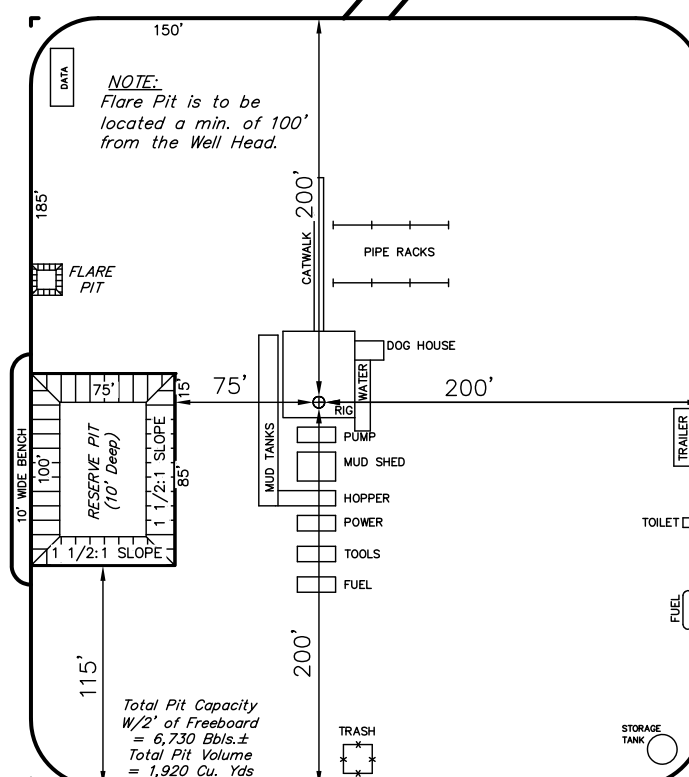
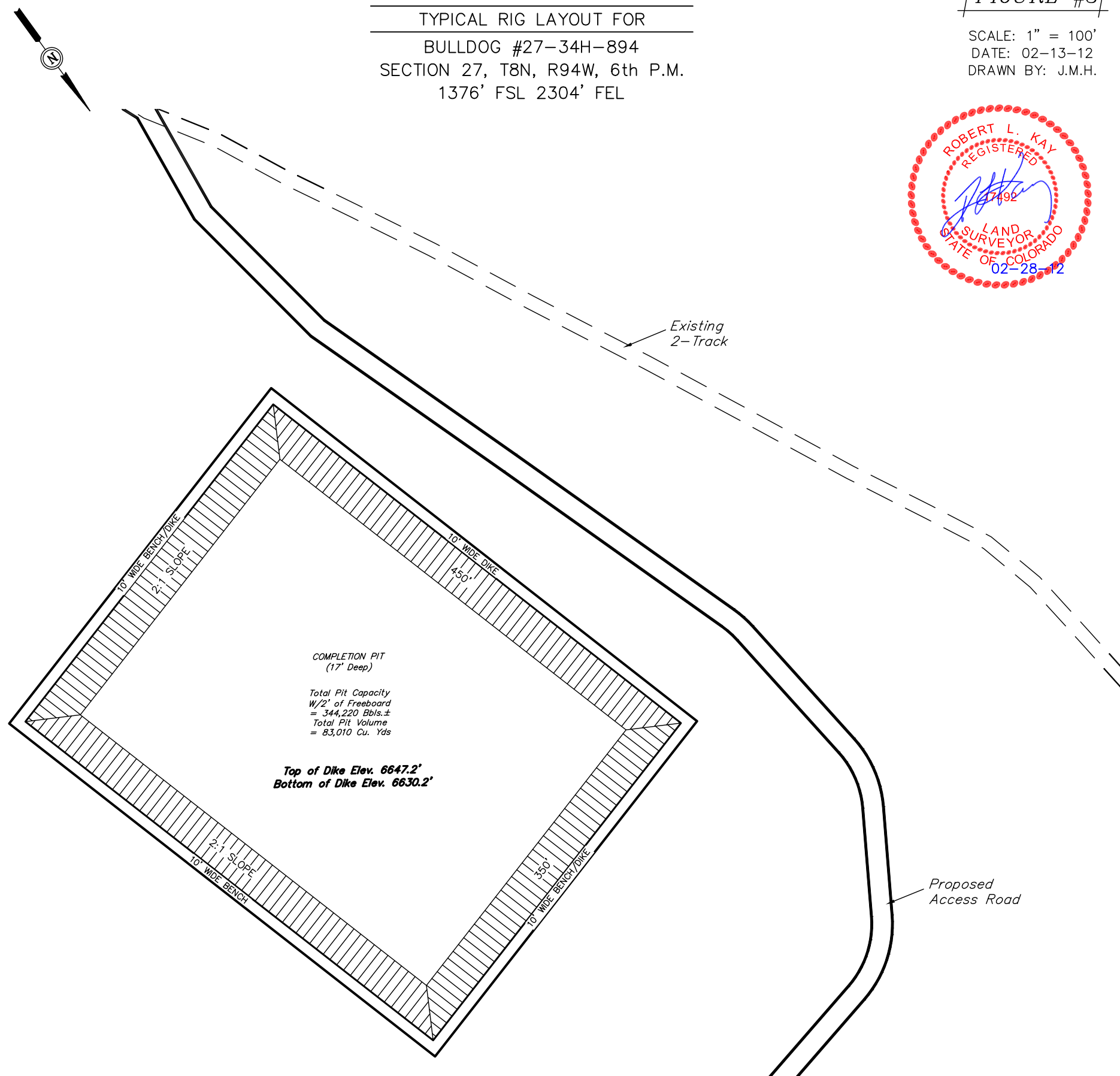
APPROXIMATE ACREAGES  
WELL SITE DISTURBANCE = ± 4.742 ACRES  
ACCESS ROAD DISTURBANCE = ± 11.200 ACRES  
COMPLETION PIT DISTURBANCE = ± 5.227 ACRES  
TOTAL = ± 21.169 ACRES

UINTAH ENGINEERING & LAND SURVEYING  
85 So. 200 East \* Vernal, Utah 84078 \* (435) 789-1017



TYPICAL RIG LAYOUT FOR  
BULLDOG #27-34H-894  
SECTION 27, T8N, R94W, 6th P.M.  
1376' FSL 2304' FEL

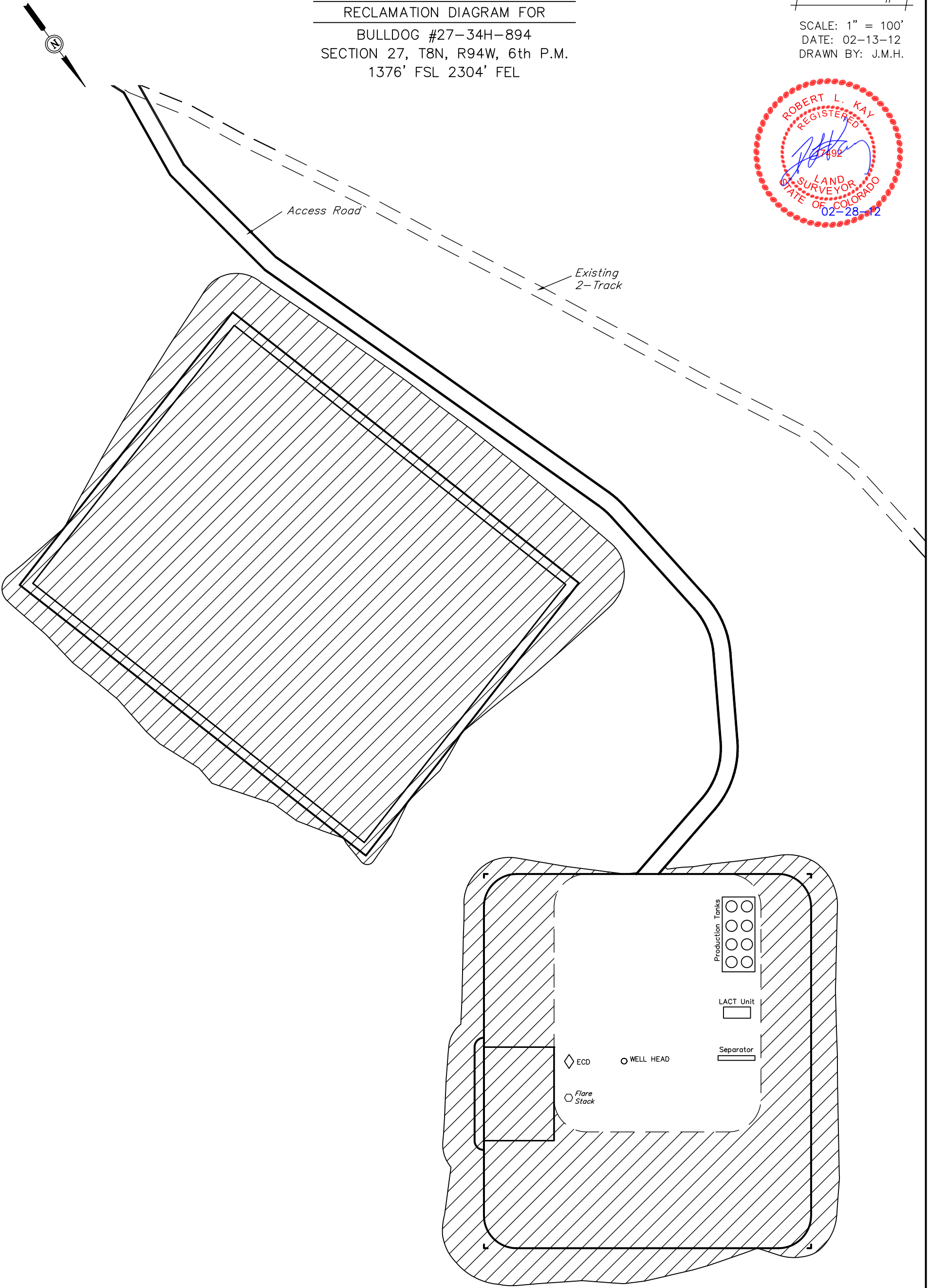
SCALE: 1" = 100'  
DATE: 02-13-12  
DRAWN BY: J.M.H.



AXIA ENERGY  
RECLAMATION DIAGRAM FOR  
BULLDOG #27-34H-894  
SECTION 27, T8N, R94W, 6th P.M.  
1376' FSL 2304' FEL

FIGURE #4

SCALE: 1" = 100'  
DATE: 02-13-12  
DRAWN BY: J.M.H.



RECLAIMED AREA

APPROXIMATE ACREAGES  
UN-RECLAIMED = ± 1.377 ACRES

UINTAH ENGINEERING & LAND SURVEYING  
85 So. 200 East \* Vernal, Utah 84078 \* (435) 789-1017