

**PROPOSED LOCATION:
BULLDOG #27-34H-894**

R 94 W
R 93 W

T8N
T7N

SEE TOPO "B"

4.5 MI. +/-

1.2 MI. +/-

CRAIG 22.4 MI. +/-

LEGEND:

PROPOSED LOCATION



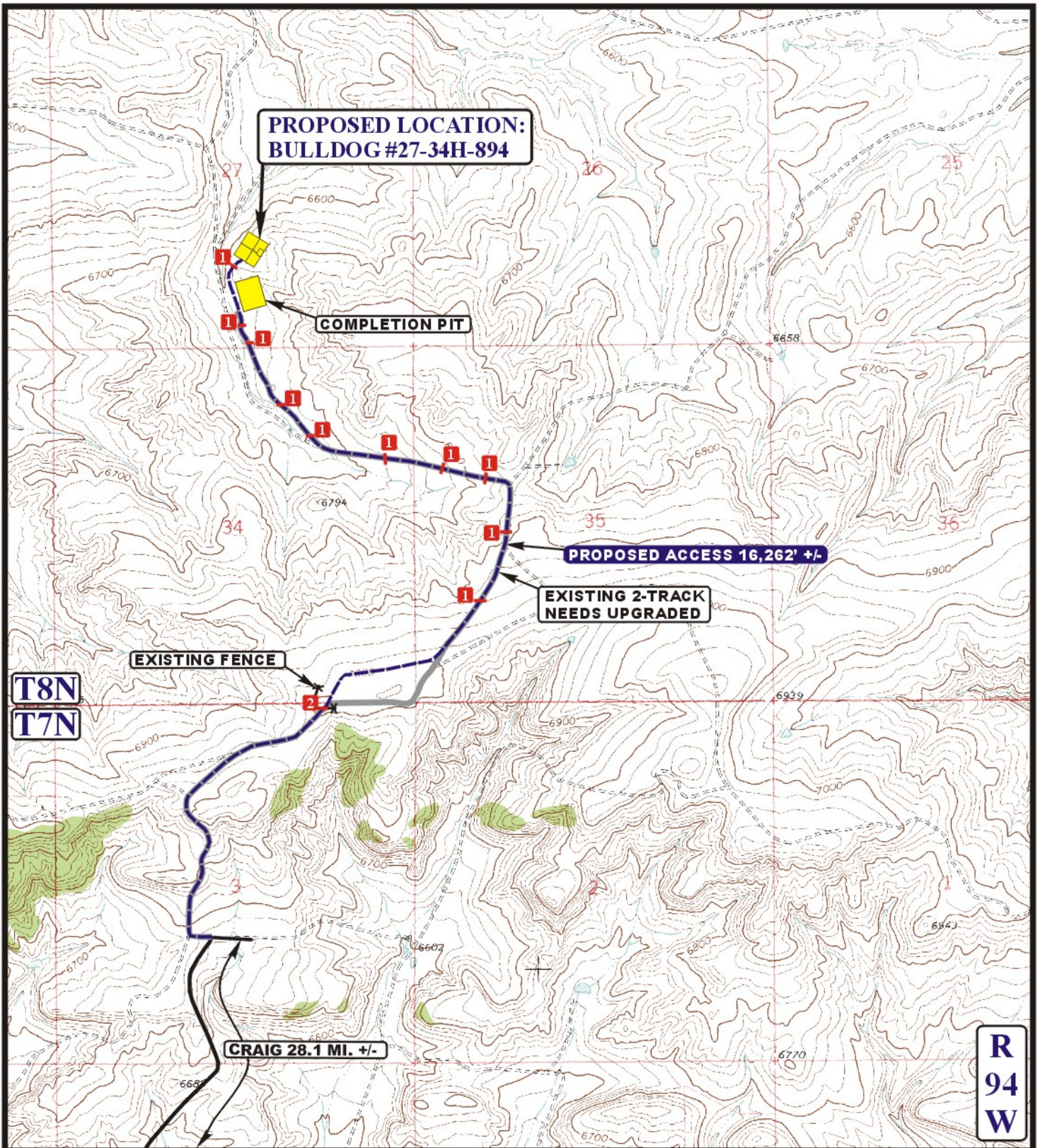
AXIA ENERGY

BULLDOG #27-34H-894
SECTION 27, T8N, R94W, 6th P.M.
1376' FSL 2304' FEL



Utah Engineering & Land Surveying
85 South 200 East Vernal, Utah 84078
(435) 789-1017 * FAX (435) 789-1813

ACCESS ROAD MAP	02 14 12 MONTH DAY YEAR	
SCALE: 1:100,000	DRAWN BY: C.I. REVISED: 00-00-00	



LEGEND:

- EXISTING ROAD
- PROPOSED ACCESS ROAD
- EXISTING 2-TRACK NEEDS UPGRADED
- EXISTING FENCE
- 18" CMP REQUIRED
- INSTALL CATTLE GUARD



Utah Engineering & Land Surveying
 85 South 200 East Vernal, Utah 84078
 (435) 789-1017 * FAX (435) 789-1813



AXIA ENERGY

BULLDOG #27-34H-894
SECTION 27, T8N, R94W, 6th P.M.
1376' FSL 2304' FEL

ACCESS ROAD MAP	02 14 12 MONTH DAY YEAR	B TOPO
SCALE: 1" = 2000'	DRAWN BY: C.I. REVISED: 00-00-00	