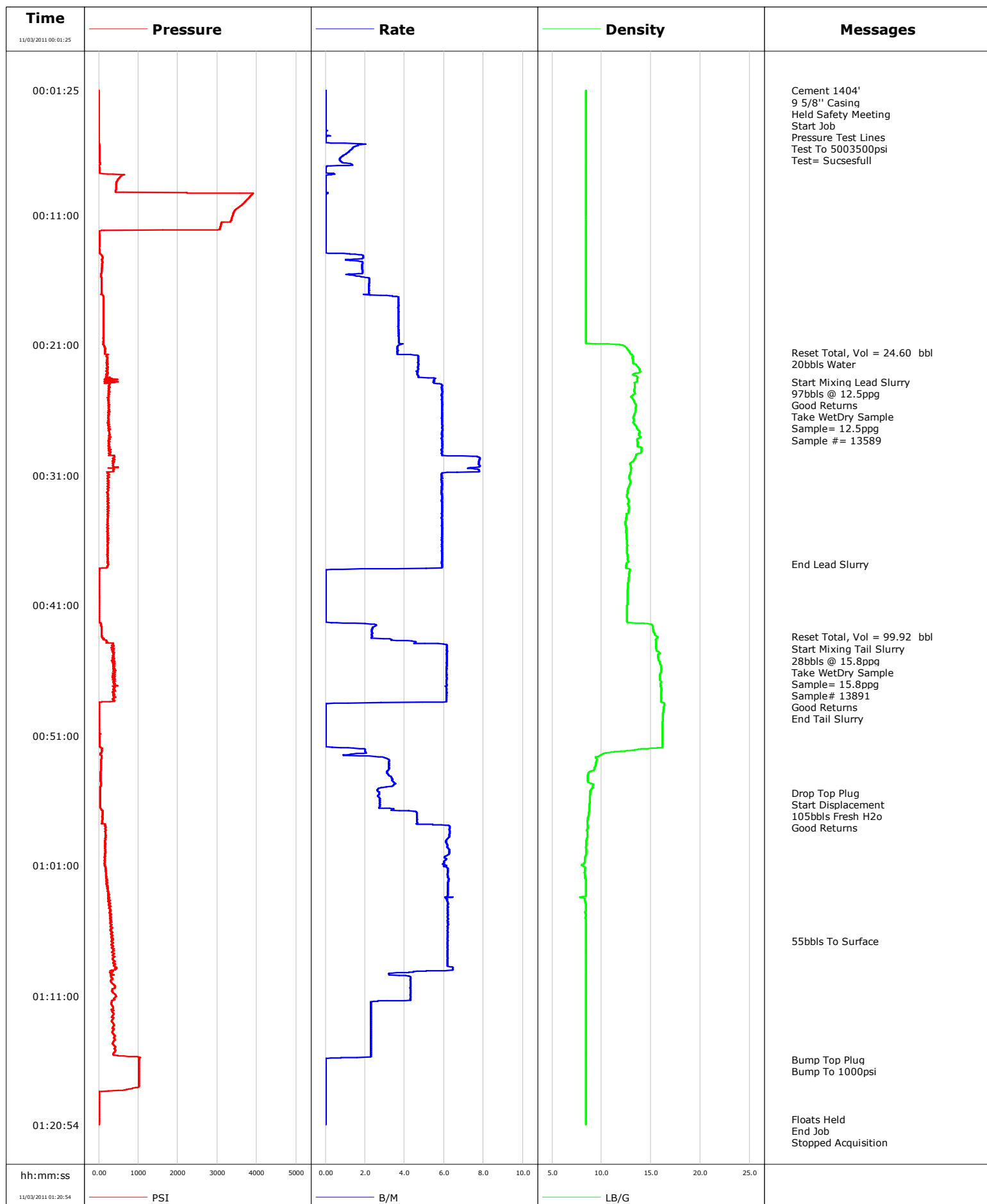


Well	BENZEL FEE 25-1A	Client	ENCANA
Field	HUNTER MESA	SIR No.	BUNM-00338
Engineer		Job Type	SURFACE
Country	United States	Job Date	11-02-2011

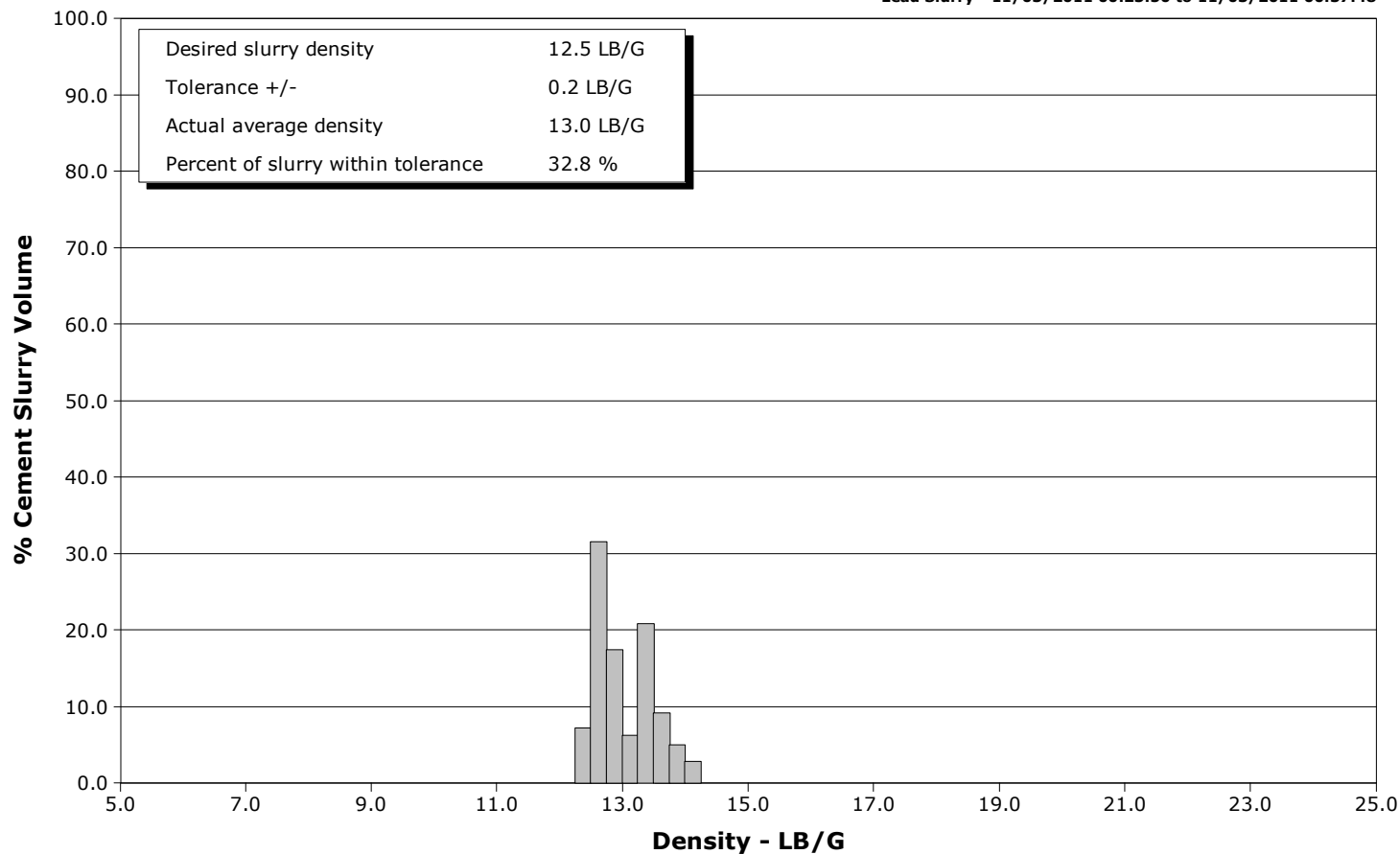


Schlumberger Cementing Qa/Qc Density Report

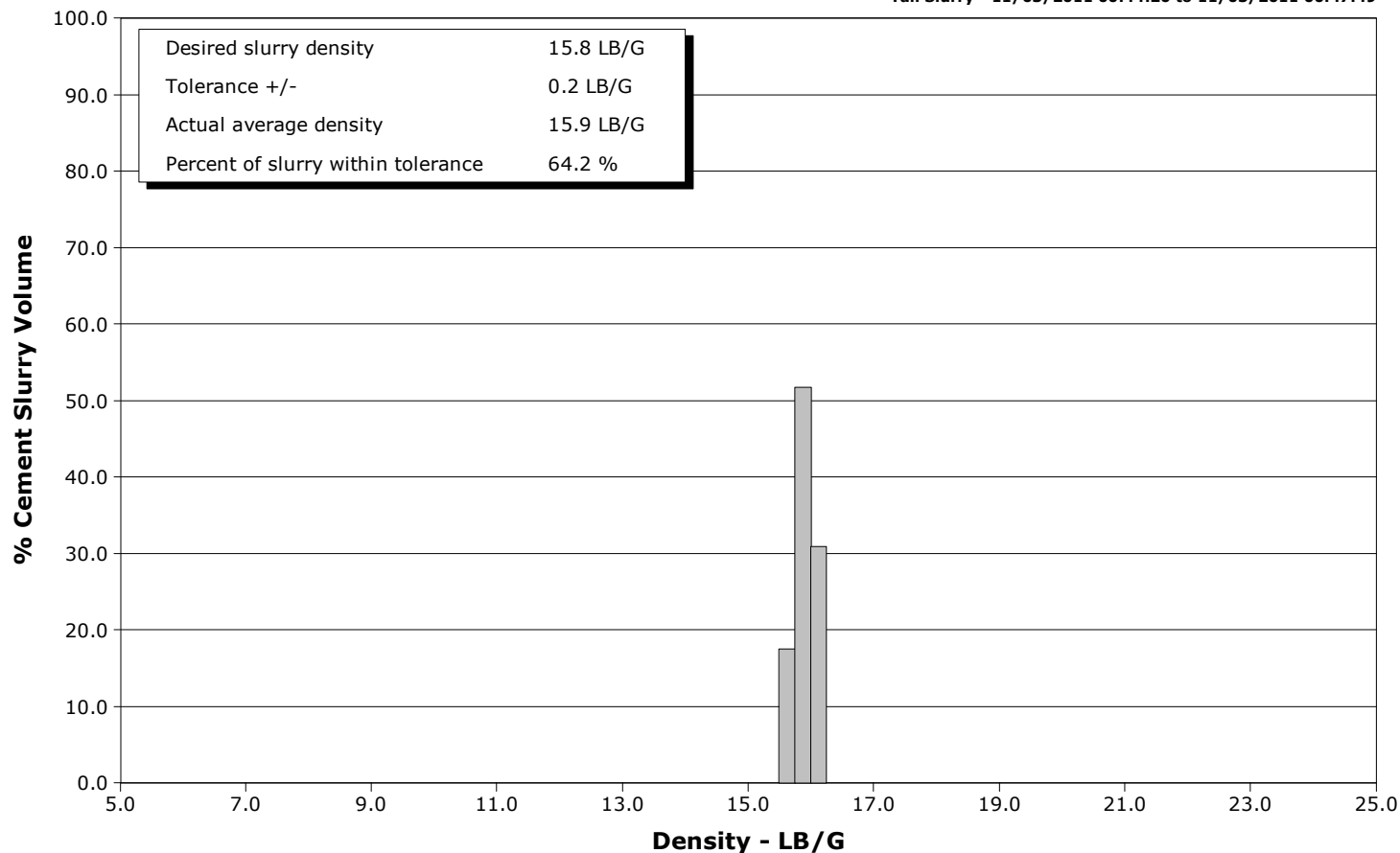
Well BENZEL FEE 25-1A
Field HUNTER MESA
Engineer
Country United States

Client ENCANA
SIR No. BUNM-00338
Job Type SURFACE
Job Date 11-02-2011

Lead Slurry - 11/03/2011 00:23:50 to 11/03/2011 00:37:48



Tail Slurry - 11/03/2011 00:44:20 to 11/03/2011 00:47:49





Cementing Service Report

				Customer ENCANA			Job Number BUNM-00338								
Well BENZEL FEE 25-1A			Location (legal) S PARACHUTE			Schlumberger Location GCO			Job Start Nov/02/2011						
Field HUNTER MESA		Formation Name/Type			Deviation		Bit Size 12.3 in		Well MD		Well TVD				
County GARFILED		State/Province Colorado			BHP		BHST		BHCT		Pore Press. Gradient				
Well Master 0631296733		API/UWI													
Rig Name PATTERSON 326		Drilled For Gas		Service Via Land		Casing/Liner									
Offshore Zone		Well Class New		Well Type Development		Depth, ft		Size, in		Weight, lb/ft		Grade		Thread	
						1404.0		9.630		36.0		J55		8RD	
Drilling Fluid Type		Max. Density		Plastic Viscosity		Tubing/Drill Pipe									
						Depth,		Size,		Weight,		Grade		Thread	
Service Line Cementing		Job Type SURFACE													
Max. Allowed Tub. Press		Max. Allowed Ann. Press		WH Connection Single Cement head		Perforations/Open Hole									
						Top,		Bottom,				No. of Shots		Total Interval	
Service Instructions 20bbbs water 297sks 12.5ppg lead yield= 2.11 134sks 15.8ppg tail yield = 1.16 water test= good														Diameter	
						Treat Down Casing		Displacement 105.0 bbl		Packer Type		Packer Depth			
Tubing Vol.		Casing Vol. 108.0 bbl		Annular Vol. 78.0 bbl		Openhole Vol. 187.0 bbl									
Casing/Tubing Secured <input checked="" type="checkbox"/>		1 Hole Vol. Circulated prior to Cement <input checked="" type="checkbox"/>		Casing Tools				Squeeze Job							
Lift Pressure 695 psi				Shoe Type Guide				Squeeze Type							
Pipe Rotated <input type="checkbox"/>		Pipe Reciprocated <input type="checkbox"/>		Shoe Depth 1404.0 ft				Tool Type							
No. Centralizers		Top Plugs		Bottom Plugs		Stage Tool Type				Tool Depth					
Cement Head Type Single				Stage Tool Depth				Tail Pipe Size							
Job Scheduled For Nov/02/2011		Arrived on Location Nov/02/2011		Leave Location Nov/02/2011		Collar Type Diff-Fill				Tail Pipe Depth					
						Collar Depth 1359.0 ft				Sqz. Total Vol.					
Date	Time 24-hr clock	Treating Pressure PSI	Flow Rate B/M	Density LB/G	Volume BBL	Message									
11/02/2011	22:27:17					Started Acquisition									
11/03/2011	00:01:25					Cement 1404'									
11/03/2011	00:01:25					9 5/8" Casing									
11/03/2011	00:01:25					Held Safety Meeting									
11/03/2011	00:01:25	-5	0.0	8.42	0.0										
11/03/2011	00:01:27					Start Job									
11/03/2011	00:01:27	-5	0.0	8.42	0.0										
11/03/2011	00:01:29					Pressure Test Lines									
11/03/2011	00:01:29	-6	0.0	8.42	0.0										
11/03/2011	00:01:30					Test To 5003500psi									
11/03/2011	00:01:30	-6	0.0	8.42	0.0										
11/03/2011	00:01:31					Test= Succesfull									
11/03/2011	00:01:31	-5	0.0	8.42	0.0										
11/03/2011	00:01:47	-5	0.0	8.43	0.0										
11/03/2011	00:02:17	-5	0.0	8.42	0.0										
11/03/2011	00:02:47	-5	0.0	8.42	0.0										
11/03/2011	00:03:17	-5	0.0	8.42	0.0										
11/03/2011	00:03:47	-5	0.0	8.42	0.0										
11/03/2011	00:04:17	-5	0.0	8.42	0.0										
11/03/2011	00:04:47	-5	0.0	8.42	0.1										
11/03/2011	00:05:17	-5	0.0	8.42	0.1										

Well			Field	Job Start		Customer	Job Number
BENZEL FEE 25-1A			HUNTER MESA	Nov/02/2011		ENCANA	BUNM-00338
Date	Time 24-hr clock	Treating Pressure PSI	Flow Rate B/M	Density LB/G	Volume BBL	Message	
11/03/2011	00:06:17	22	1.1	8.43	1.2		
11/03/2011	00:06:47	23	0.7	8.42	1.6		
11/03/2011	00:07:17	11	0.1	8.42	2.1		
11/03/2011	00:07:47	16	0.0	8.42	2.1		
11/03/2011	00:08:17	490	0.0	8.42	2.1		
11/03/2011	00:08:47	433	0.0	8.42	2.1		
11/03/2011	00:09:17	2211	0.1	8.42	2.1		
11/03/2011	00:09:47	3772	0.0	8.42	2.2		
11/03/2011	00:10:17	3600	0.0	8.42	2.2		
11/03/2011	00:10:47	3418	0.0	8.42	2.2		
11/03/2011	00:11:17	3361	0.0	8.42	2.2		
11/03/2011	00:11:47	3087	0.0	8.42	2.2		
11/03/2011	00:12:17	9	0.0	8.42	2.2		
11/03/2011	00:12:47	14	0.0	8.42	2.2		
11/03/2011	00:13:17	13	0.0	8.42	2.2		
11/03/2011	00:13:47	14	0.0	8.42	2.2		
11/03/2011	00:14:17	97	1.9	8.42	2.8		
11/03/2011	00:14:47	82	1.9	8.42	3.6		
11/03/2011	00:15:17	75	1.9	8.42	4.5		
11/03/2011	00:15:47	68	1.9	8.42	5.4		
11/03/2011	00:16:17	65	2.2	8.42	6.5		
11/03/2011	00:16:47	67	2.2	8.42	7.6		
11/03/2011	00:17:17	116	3.6	8.42	8.8		
11/03/2011	00:17:47	117	3.7	8.41	10.6		
11/03/2011	00:18:17	119	3.7	8.41	12.5		
11/03/2011	00:18:47	117	3.7	8.41	14.3		
11/03/2011	00:19:17	120	3.7	8.41	16.2		
11/03/2011	00:19:47	118	3.7	8.41	18.0		
11/03/2011	00:20:17	114	3.7	8.41	19.9		
11/03/2011	00:20:47	108	3.7	8.41	21.7		
11/03/2011	00:21:17	158	3.6	12.60	23.6		
11/03/2011	00:21:34					Reset Total, Vol = 24.60 bbl	
11/03/2011	00:21:34	158	3.6	12.85	24.6		
11/03/2011	00:21:47	206	4.6	13.12	25.4		
11/03/2011	00:22:00					20bbbls Water	
11/03/2011	00:22:00	207	4.7	13.11	26.5		
11/03/2011	00:22:17	198	4.7	13.20	27.8		
11/03/2011	00:22:47	224	4.7	13.80	30.1		
11/03/2011	00:23:17	209	4.7	13.16	32.5		
11/03/2011	00:23:47	136	5.5	13.58	35.0		
11/03/2011	00:23:50					Start Mixing Lead Slurry	
11/03/2011	00:23:50	146	5.5	13.55	35.3		
11/03/2011	00:23:51					97bbbls @ 12.5ppg	
11/03/2011	00:23:51	260	5.5	13.55	35.4		
11/03/2011	00:23:52					Good Returns	
11/03/2011	00:23:52	410	5.5	13.45	35.5		
11/03/2011	00:24:17	268	5.9	13.34	37.9		
11/03/2011	00:24:47	261	5.9	13.28	40.8		
11/03/2011	00:24:50					Take WetDry Sample	
11/03/2011	00:24:50	239	5.9	13.20	41.1		
11/03/2011	00:24:51					Sample= 12.5ppg	
11/03/2011	00:24:51					Sample # = 13589	
11/03/2011	00:24:51	239	5.9	13.17	41.2		
11/03/2011	00:25:17	251	5.9	13.25	43.8		

Well			Field		Job Start	Customer		Job Number
BENZEL FEE 25-1A			HUNTER MESA		Nov/02/2011	ENCANA		BUNM-00338
Date	Time 24-hr clock	Treating Pressure PSI	Flow Rate B/M	Density LB/G	Volume BBL	Message		
11/03/2011	00:26:17	246	5.9	13.34	49.7			
11/03/2011	00:26:47	223	5.9	13.28	52.6			
11/03/2011	00:27:17	282	5.9	13.53	55.6			
11/03/2011	00:27:47	262	5.9	13.77	58.5			
11/03/2011	00:28:17	274	5.9	13.60	61.5			
11/03/2011	00:28:47	243	5.9	13.65	64.4			
11/03/2011	00:29:17	299	5.9	14.00	67.4			
11/03/2011	00:29:47	401	7.8	13.32	70.8			
11/03/2011	00:30:17	371	7.8	12.98	74.7			
11/03/2011	00:30:47	236	6.6	12.94	78.5			
11/03/2011	00:31:17	216	5.9	12.83	81.4			
11/03/2011	00:31:47	253	5.9	12.83	84.4			
11/03/2011	00:32:17	213	5.9	12.62	87.3			
11/03/2011	00:32:47	233	5.9	12.65	90.2			
11/03/2011	00:33:17	228	5.9	12.70	93.2			
11/03/2011	00:33:47	229	5.9	12.71	96.1			
11/03/2011	00:34:17	232	5.9	12.49	99.1			
11/03/2011	00:34:47	211	5.9	12.44	102.0			
11/03/2011	00:35:17	229	5.9	12.49	105.0			
11/03/2011	00:35:47	230	5.9	12.54	107.9			
11/03/2011	00:36:17	217	5.9	12.59	110.9			
11/03/2011	00:36:47	227	5.9	12.58	113.8			
11/03/2011	00:37:17	220	5.9	12.64	116.8			
11/03/2011	00:37:47	225	5.9	12.53	119.7			
11/03/2011	00:37:48					End Lead Slurry		
11/03/2011	00:37:48	221	5.9	12.52	119.8			
11/03/2011	00:38:17	13	0.0	12.86	122.1			
11/03/2011	00:38:47	5	0.0	12.76	122.1			
11/03/2011	00:39:17	3	0.0	12.69	122.1			
11/03/2011	00:39:47	4	0.0	12.65	122.1			
11/03/2011	00:40:17	4	0.0	12.63	122.1			
11/03/2011	00:40:47	5	0.0	12.61	122.1			
11/03/2011	00:41:17	4	0.0	12.59	122.1			
11/03/2011	00:41:47	5	0.0	12.57	122.1			
11/03/2011	00:42:17	6	0.0	12.57	122.1			
11/03/2011	00:42:47	69	2.4	15.18	123.1			
11/03/2011	00:43:17	75	2.3	15.42	124.3			
11/03/2011	00:43:23					Reset Total, Vol = 99.92 bbl		
11/03/2011	00:43:23	73	2.4	15.60	124.5			
11/03/2011	00:43:47	203	4.5	15.50	125.8			
11/03/2011	00:44:17	309	6.1	15.54	128.6			
11/03/2011	00:44:20					Start Mixing Tail Slurry		
11/03/2011	00:44:20	381	6.1	15.54	128.9			
11/03/2011	00:44:21					28bbbls @ 15.8ppg		
11/03/2011	00:44:21					Take WetDry Sample		
11/03/2011	00:44:21	381	6.1	15.54	129.0			
11/03/2011	00:44:22					Sample= 15.8ppg		
11/03/2011	00:44:22					Sample# 13891		
11/03/2011	00:44:22					Good Returns		
11/03/2011	00:44:22	381	6.1	15.54	129.1			
11/03/2011	00:44:47	390	6.1	15.71	131.7			
11/03/2011	00:45:17	403	6.1	15.86	134.7			
11/03/2011	00:45:47	387	6.1	16.02	137.8			
11/03/2011	00:46:17	410	6.1	15.93	140.8			

Well			Field		Job Start	Customer		Job Number
BENZEL FEE 25-1A			HUNTER MESA		Nov/02/2011	ENCANA		BUNM-00338
Date	Time 24-hr clock	Treating Pressure PSI	Flow Rate B/M	Density LB/G	Volume BBL	Message		
11/03/2011	00:47:17	418	6.1	16.01	147.0			
11/03/2011	00:47:47	378	6.1	16.02	150.0			
11/03/2011	00:47:49					End Tail Slurry		
11/03/2011	00:47:49	398	6.1	16.02	150.2			
11/03/2011	00:48:17	385	6.1	16.01	153.1			
11/03/2011	00:48:47	9	0.0	16.31	154.3			
11/03/2011	00:49:17	7	0.0	16.22	154.3			
11/03/2011	00:49:47	8	0.0	16.18	154.3			
11/03/2011	00:50:17	9	0.0	16.16	154.3			
11/03/2011	00:50:47	6	0.0	16.16	154.3			
11/03/2011	00:51:17	15	0.0	16.16	154.3			
11/03/2011	00:51:47	15	0.0	16.15	154.3			
11/03/2011	00:52:17	77	2.0	11.03	154.9			
11/03/2011	00:52:47	63	3.1	9.51	156.0			
11/03/2011	00:53:17	57	3.2	9.39	157.6			
11/03/2011	00:53:47	49	3.1	8.82	159.2			
11/03/2011	00:54:17	47	3.3	8.61	160.8			
11/03/2011	00:54:47	51	3.5	9.16	162.5			
11/03/2011	00:55:17	31	2.6	8.85	164.0			
11/03/2011	00:55:24					Drop Top Plug		
11/03/2011	00:55:24	32	2.7	8.85	164.3			
11/03/2011	00:55:26					Start Displacement		
11/03/2011	00:55:26	33	2.7	8.86	164.4			
11/03/2011	00:55:27					105bbbls Fresh H2o		
11/03/2011	00:55:27					Good Returns		
11/03/2011	00:55:27	33	2.7	8.86	164.4			
11/03/2011	00:55:47	33	2.7	8.79	165.3			
11/03/2011	00:56:17	33	2.7	8.77	166.7			
11/03/2011	00:56:47	92	4.2	8.74	168.2			
11/03/2011	00:57:17	90	4.6	8.63	170.5			
11/03/2011	00:57:47	74	4.6	8.56	172.8			
11/03/2011	00:58:17	179	6.3	8.52	175.8			
11/03/2011	00:58:47	162	6.3	8.55	179.0			
11/03/2011	00:59:17	159	6.1	8.44	182.0			
11/03/2011	00:59:47	162	6.3	8.45	185.1			
11/03/2011	01:00:17	160	6.1	8.37	188.2			
11/03/2011	01:00:47	144	6.0	8.24	191.3			
11/03/2011	01:01:17	180	6.2	8.31	194.3			
11/03/2011	01:01:47	194	6.2	8.33	197.4			
11/03/2011	01:02:17	208	6.2	8.41	200.5			
11/03/2011	01:02:47	225	6.2	8.41	203.6			
11/03/2011	01:03:17	230	6.2	8.41	206.7			
11/03/2011	01:03:47	251	6.2	8.34	209.8			
11/03/2011	01:04:17	257	6.2	8.40	212.9			
11/03/2011	01:04:47	287	6.2	8.40	216.0			
11/03/2011	01:05:17	307	6.2	8.40	219.1			
11/03/2011	01:05:47	339	6.2	8.40	222.1			
11/03/2011	01:06:17	320	6.2	8.40	225.2			
11/03/2011	01:06:45					55bbbls To Surface		
11/03/2011	01:06:45	348	6.2	8.40	228.1			
11/03/2011	01:06:47	324	6.2	8.40	228.3			
11/03/2011	01:07:17	342	6.2	8.40	231.4			
11/03/2011	01:07:47	374	6.2	8.40	234.5			
11/03/2011	01:08:17	375	6.2	8.40	237.6			

Well			Field		Job Start	Customer		Job Number
BENZEL FEE 25-1A			HUNTER MESA		Nov/02/2011	ENCANA		BUNM-00338
Date	Time 24-hr clock	Treating Pressure PSI	Flow Rate B/M	Density LB/G	Volume BBL	Message		
11/03/2011	01:09:17	320	3.2	8.40	243.4			
11/03/2011	01:09:47	315	4.3	8.40	245.4			
11/03/2011	01:10:17	401	4.3	8.40	247.6			
11/03/2011	01:10:47	366	4.3	8.40	249.7			
11/03/2011	01:11:17	384	4.3	8.40	251.8			
11/03/2011	01:11:47	347	2.3	8.40	253.2			
11/03/2011	01:12:17	348	2.3	8.40	254.3			
11/03/2011	01:12:47	351	2.3	8.40	255.5			
11/03/2011	01:13:17	388	2.3	8.40	256.6			
11/03/2011	01:13:47	336	2.3	8.40	257.8			
11/03/2011	01:14:17	404	2.3	8.40	258.9			
11/03/2011	01:14:47	371	2.3	8.40	260.1			
11/03/2011	01:15:17	405	2.3	8.40	261.2			
11/03/2011	01:15:47	1017	0.3	8.40	262.3			
11/03/2011	01:15:53					Bump Top Plug		
11/03/2011	01:15:53	1016	0.0	8.40	262.3			
11/03/2011	01:15:54					Bump To 1000psi		
11/03/2011	01:15:54	1013	0.0	8.40	262.3			
11/03/2011	01:16:17	1013	0.0	8.40	262.3			
11/03/2011	01:16:47	1013	0.0	8.40	262.3			
11/03/2011	01:17:17	1015	0.0	8.40	262.3			
11/03/2011	01:17:47	1015	0.0	8.40	262.3			
11/03/2011	01:18:17	500	0.0	8.40	262.3			
11/03/2011	01:18:47	3	0.0	8.40	262.3			
11/03/2011	01:19:17	3	0.0	8.40	262.3			
11/03/2011	01:19:47	2	0.0	8.40	262.3			
11/03/2011	01:20:17	2	0.0	8.40	262.3			
11/03/2011	01:20:28					Floats Held		
11/03/2011	01:20:28	2	0.0	8.40	262.3			
11/03/2011	01:20:47	2	0.0	8.40	262.3			
11/03/2011	01:20:50					End Job		
11/03/2011	01:20:50	2	0.0	8.40	262.3			

Post Job Summary

Average Pump Rates, bbl/min					Volume of Fluid Injected, bbl					
Slurry 3.6	N2	Mud 0.0	Maximum Rate 7.8		Total Slurry 262.3	Mud 0.0	Spacer 35.2	N2		
Treating Pressure Summary, psi					Breakdown Fluid					
Maximum 3920	Final 2	Average 340	Bump Plug to 1000	Breakdown	Type		Volume		Density	
Avg. N2 Percent		Designed Slurry Volume 125.0 bbl		Displacement 98.0 bbl	Mix Water Temp 69 degF	Cement Circulated to Surface? <input checked="" type="checkbox"/>		Volume 55.0 bbl		
						Washed Thru Perfs <input type="checkbox"/>		To		
Customer or Authorized Representative			Schlumberger Supervisor			Circulation Lost <input type="checkbox"/>		Job Completed <input checked="" type="checkbox"/>		
NORM MCCREARY			JASON CRICK			-		-		



Service Order #:	
Date:	Nov/02/2011
Operating Time:	0.0
Client Rep:	ENCANA
Schlumberger Engineer:	JASON CRICK
Schlumberger FSM:	

To be completed by Company Rep. Please answer Y (Yes) or N (No) and add any comments below.

4	Evaluation					
4a	Main job objective achieved with no consequential non-productive time	10	yes <input type="checkbox"/>	no <input checked="" type="checkbox"/>	0	
					Sub-total	0%

Comments: (Please include a brief explanation for a "NO" response and summarize any innovations attempted on this well.)

Client:	Schlumberger:
Client Signature:	Schlumberger Signature: