

The Road to Excellence Starts with Safety

The Road to Excellence Starts With Safety

Sold To #: 304535	Ship To #: 2270220	Quote #:	Sales Order #: 9367366
Customer: PDC ENERGY EBUS		Customer Rep: Alvarado, Philip	
Well Name: Johnson		Well #: 13-4	API/UWI #: 05-123-21307-00
Field: Wattenberg	City (SAP): KERSEY	County/Parish: Weld	State: Colorado
Legal Description: Section NWSW4 Township 6N Range 65W			
Lat: N 40.516 deg. OR N 40 deg. 30 min. 56.916 secs.		Long: W 104.676 deg. OR W -105 deg. 19 min. 25.788 secs.	
Job Purpose: Recement Service			
Well Type: Development Well		Job Type: Recement Service	
Sales Person: FLING, MATTHEW		Srvc Supervisor: CONGDON, RICHARD	MBU ID Emp #: 320306

Job Personnel

HES Emp Name	Exp Hrs	Emp #	HES Emp Name	Exp Hrs	Emp #	HES Emp Name	Exp Hrs	Emp #
BANUELOS, GUADALUPE	3.5	372277	CONGDON, RICHARD S.	3.5	320306	TAYLOR, JOSHUA Lin	3.5	485939
VIGIL, NICHOLAS Joseph	3.5	443481						

Equipment

HES Unit #	Distance-1 way	HES Unit #	Distance-1 way	HES Unit #	Distance-1 way	HES Unit #	Distance-1 way
10857080C	45 mile	11019824C	45 mile	11341988C	45 mile	11606995	45 mile
5707C	45 mile						

Job Hours

Date	On Location Hours	Operating Hours	Date	On Location Hours	Operating Hours	Date	On Location Hours	Operating Hours
3/19/12	3.5	2.5						

TOTAL Total is the sum of each column separately

Job

Formation Name	Formation Depth (MD)	Top	Bottom	Form Type	Job depth MD	Job Depth TVD	Water Depth	Perforation Depth (MD)	From	To
				BHST	2987. ft	2987. ft				
						3. ft				

Job Times

Date	Time	Time Zone
19 - Mar - 2012	08:00	MST
19 - Mar - 2012	11:00	MST
19 - Mar - 2012	11:50	MST
19 - Mar - 2012	13:47	MST
19 - Mar - 2012	14:30	MST

Well Data

Description	New / Used	Max pressure psig	Size in	ID in	Weight lbm/ft	Thread	Grade	Top MD ft	Bottom MD ft	Top TVD ft	Bottom TVD ft
Open Hole				12.				451.	2987.		
Production Casing	Used		4.5	4.052	10.5		J-55		7340.		
Surface Casing	Used		8.625	8.097	24.		J-55		451.		
TUBING	Used		1.25	.671	3.02				2987.		

Tools and Accessories

Type	Size	Qty	Make	Depth	Type	Size	Qty	Make	Depth	Type	Size	Qty	Make
Guide Shoe					Packer					Top Plug			
Float Shoe					Bridge Plug					Bottom Plug			
Float Collar					Retainer					SSR plug set			
Insert Float										Plug Container			
Stage Tool										Centralizers			

Miscellaneous Materials

Gelling Agt	Conc	Surfactant	Conc	Acid Type	Qty	Conc	%
Treatment Fld	Conc	Inhibitor	Conc	Sand Type	Size	Qty	

Fluid Data

Stage/Plug #: 1

Fluid #	Stage Type	Fluid Name	Qty	Qty uom	Mixing Density lbm/gal	Yield ft ³ /sk	Mix Fluid Gal/sk	Rate bbl/min	Total Mix Fluid Gal/sk
1	ClayWeb Water Spacer		10.00	bbl	8.33	.0	.0	2.0	
2	MUD FLUSH III	MUD FLUSH III - SBM (528788)	12.00	bbl	8.4	.0	.0	2.0	
3	ClayWeb Water Spacer		10.00	bbl	8.33	.0	.0	2.0	
59.525 gal/Mgal		CLA-WEB - TOTE (101985045)							
4	Varicem 12#	VARICEM (TM) CEMENT (452009)	320.0	sacks	12.	2.18	12.34	2.0	12.34
12.34 Gal		FRESH WATER							
Calculated Values		Pressures		Volumes					
Displacement		Shut In: Instant		Lost Returns		Cement Slurry	124	Pad	
Top Of Cement		5 Min		Cement Returns	10	Actual Displacement	1.5	Treatment	
Frac Gradient		15 Min		Spacers	32	Load and Breakdown		Total Job	
Rates									
Circulating		Mixing		Displacement		Avg. Job			
Cement Left In Pipe	Amount	0 ft	Reason	Shoe Joint					
Frac Ring # 1 @	ID	Frac ring # 2 @	ID	Frac Ring # 3 @	ID	Frac Ring # 4 @	ID		
The Information Stated Herein Is Correct				Customer Representative Signature					

The Road to Excellence Starts with Safety

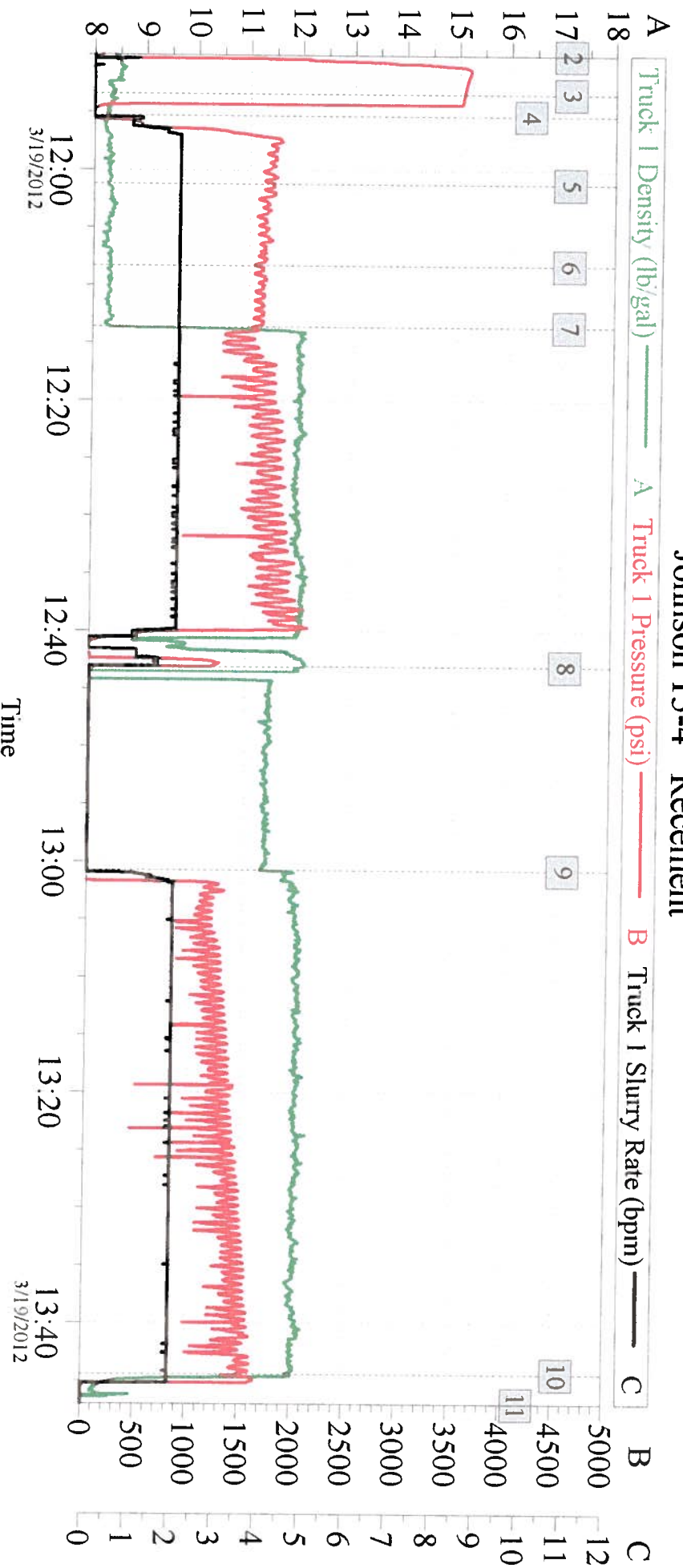
The Road to Excellence Starts With Care.

Sold To #: 304535	Ship To #: 2270220	Quote #:	Sales Order #: 9367366
Customer: PDC ENERGY EBUS		Customer Rep: Alvarado, Philip	
Well Name: Johnson		Well #: 13-4	API/UWI #: 05-123-21307-00
Field: Wattenberg	City (SAP): KERSEY	County/Parish: Weld	State: Colorado
Legal Description: Section NWSW4 Township 6N Range 65W			
Lat: N 40.516 deg. OR N 40 deg. 30 min. 56.916 secs.		Long: W 104.676 deg. OR W -105 deg. 19 min. 25.788 secs.	
Contractor:		Rig/Platform Name/Num:	
Job Purpose: Recement Service			Ticket Amount:
Well Type: Development Well		Job Type: Recement Service	
Sales Person: FLING, MATTHEW		Srvc Supervisor: CONGDON, RICHARD	MBU ID Emp #: 320306

Activity Description	Date/Time	Cht #	Rate bbl/min	Volume bbl		Pressure psig		Comments
				Stage	Total	Tubing	Casing	
Arrive at Location from Other Job or Site	03/19/2012 11:00							Met pump truck from other job. Conducted hazard hunt and pre-rig up safety huddle.
Pre-Job Safety Meeting	03/19/2012 11:30							Held safety meeting with all third party personell on location
Test Lines	03/19/2012 11:55							Customer requested max pressure of 2500 PSI. No visible Leaks. Good Test
Pump Spacer 1	03/19/2012 11:55		2	10	10		1679.0	Fresh Water with 1/2 gal Cla-Web added
Pump Spacer 2	03/19/2012 12:01		2	12	22		1727.0	Fresh Water with 40# Mudflush III added
Pump Spacer 1	03/19/2012 12:08		2	10	32		1571.0	Fresh Water with 1/2 gal Cla-Web added
Pump Cement	03/19/2012 12:13		2	55	87		1536.0	142 sacks 12ppg Surface Varicem mixed with fresh water
Shutdown	03/19/2012 12:43						2089.0	Tubing started to stick. Waited while rig cew pulled 28 joints
Pump Cement	03/19/2012 13:00			69	156			178 sacks 12ppg Surface Varicem mixed with fresh water
Pump Displacement	03/19/2012 13:44			1.5	157.5			Fresh water to clear pump and lines
End Job	03/19/2012 13:47							10bbl cement pumped to surface
Pre-Rig Down Safety Meeting	03/19/2012 13:55							Held safety meeting with all HES personell and prepared for departure

P.D.C. Energy

Johnson 13-4 Recement



Global Event Log

Intersection				Intersection					
		TID	TIP			TID	TIP		
2	Start Job	11:50:03	8.399	62.04	3	Test Lines	11:53:24	8.394	3545
4	Cla-Web Water	11:55:17	8.267	2.000	5	Mudflush III	12:01:13	8.290	1727
6	Cla-Web Water	12:08:17	8.347	1.571	7	12ppg Surf. Varicem	12:13:36	8.329	1536
8	Shutdown	12:43:02	12.12	544.9	9	Resume Cement	13:00:43	11.35	-9.000
10	Pump Displacement	13:44:26	11.98	1.509	11	End Job	13:47:00	-0.276	-9.000

Customer: PDC
Well Description: Recement
Thank You, R.Congdon, and Crew

Job Date: 19-Mar-2012
UWI: 05-123-21307

Sales Order #: 9367366



SERVICE DATE 3-20-19

TICKET PAGE of

0903 Master Field Ticket

SIGNATURE of CUSTOMER OR CUSTOMER'S AGENT

(PLEASE PRINT NAME HERE)

I have read, understood and agreed to the terms and conditions printed on the reverse side hereof which include, but are not limited to, LIMITED WARRANTY, INDEMNITY, RELEASE and PAYMENT and represent that I have full power and authority to execute this agreement.

CUSTOMER OR AGENT SIGNATURE

Unless satisfactory credit terms have been established prior to services payment in advance may be required. All invoices rendered for services performed by Superior Wet Services shall be paid as indicated on the invoice within thirty days (30) from date of receipt. If not paid within thirty (30) days the unpaid amount is subject to interest at one and one half percent (1 1/2%) per month (eighteen percent per annum). All discounts indicated on the invoice are based upon payment within the invoice payment term and are subject to being cancelled by Superior Wet Services if not paid within terms. If it should be necessary to employ an attorney to collect the amount due, you will be held liable for attorneys' fees and collection costs. Superior Wet Services, price book is incorporated herein by reference, which also contains all invoice payment terms.

Subtotal

Bal Due

I acknowledge that the equipment, materials and services as listed on this filed ticket were received.

Field—Pink