

1625 Broadway  
Suite 2000  
Denver, CO 80202  
  
Tel: 303.228.4000  
Fax: 303.228.4280  
www.nobleenergyinc.com



April 10, 2012

Colorado Oil and Gas Conservation Commission  
The Chancery Building  
1120 Lincoln Street, Suite 801  
Denver, CO 80203  
Attn: Mr. Thom Kerr, Acting Director

RE: **Shelton PC G24-75HN**  
Niobrara New Drill  
Township 4 North, Range 65 West, 6th P.M.  
Section 25: NW/4NE/4: 285' FNL & 2449' FEL (Surface Location)  
Section 24: SW/4SE/4: 720' FSL & 2557' FEL (Begin Production Location)  
Section 24: NW/4NE/4: 535' FNL & 2580' FEL (Bottom Hole Location)  
Weld County, Colorado

Mr. Kerr:

Noble Energy, Inc. ("NEI") is planning to drill the captioned boundary well in accordance with the provisions of COGCC Rule 318A.e.

NEI's proposed wellbore spacing unit consists of the W/2E/2, E/2W/2 of Sec 24, T4N, R64W, creating a 320-acre wellbore spacing unit for the Niobrara formation. NEI is not the only owner within the proposed wellbore spacing unit and as such provided notice to the remaining owner(s) within said proposed spacing unit as required under COGCC Rule 318A(l).e(6). Copies of the required notice letter(s) is/are on file at the NEI offices. The required thirty (30) day notice period has elapsed absent the receipt by NEI of an objection to said proposal by the owner(s) within the proposed spacing unit for this well.

Enclosed are copies of the following documents to assist you in your review and approval of NEI's proposed APD for the captioned well:

- Map & plat illustrating proposed wellbore spacing unit.

Thank you for your attention to the enclosed. NEI respectfully requests that the COGCC review the enclosed information and approve the Application for Permit to Drill the captioned well.

Sincerely,

Justin Garrett  
Regulatory Specialist  
Noble Energy Inc.

The map displays a grid of oil and gas wells in the Shelton area. Wells are represented by yellow circles with black outlines, some with additional symbols like crosses or diamonds. A red dashed line runs vertically through the center, and a red solid line runs horizontally across the middle. A large black circle is labeled 'Shelton PC G24-75HN'. A green line connects a well to the black circle. A blue diamond is located near the center-left. The map includes labels for various wells, such as ARENS 23-2G, SHELTON G 23-17, ALLISON 24-1, BURKE 24-1, and DABNEY G 23-10. A legend in the top right corner identifies symbols for 'Well', 'Wellhead', 'Valve', 'Wellbore', and 'Wellhead/Valve'.

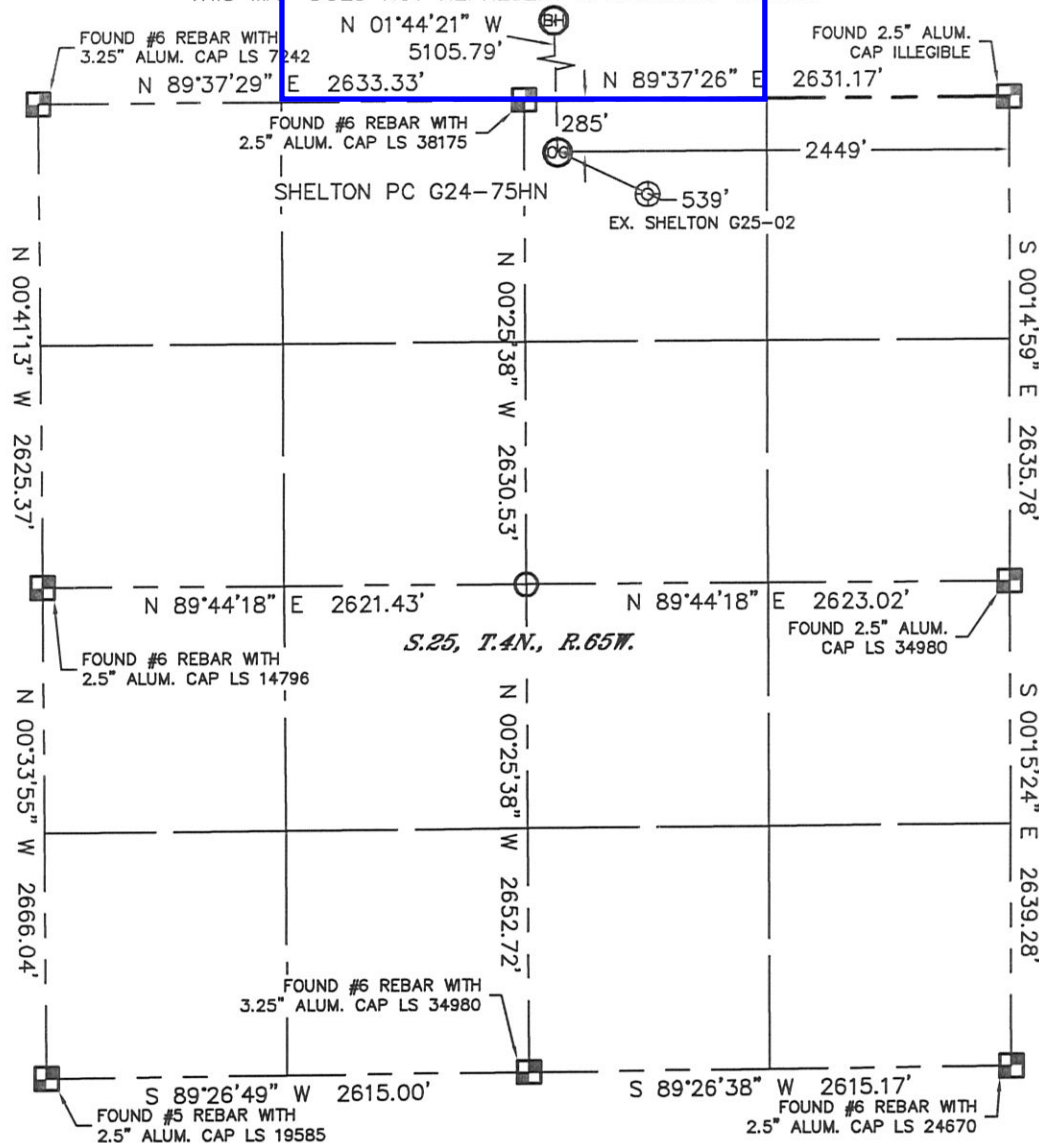


Bottom Hole Location

# WELL LOCATION CERTIFICATE

SECTION: 25  
TOWNSHIP: 4N  
RANGE: 65W

THIS MAP DOES NOT REPRESENT A BOUNDARY SURVEY



In accordance with a request from Ryan Hawkins with Noble Energy Inc., Lat40°, Inc. has determined the surface location of the SHELTON PC G24-75HN to be 285' from the NORTH line and 2449' from the EAST line as measured at right angles from the section lines of Section 25, Township 4 North, Range 65 West and the bottom hole to be 535' from the NORTH line and 2580' from the EAST line as measured at right angles from the section lines of Section 24, Township 4 North, Range 65 West of the Sixth Principal Meridian, County of Weld, State of Colorado.

I hereby state that this Well Location Certificate was prepared by me, or under my direct supervision, that the fieldwork was completed on 11/4/11, for and on behalf of Noble Energy Inc. That this is not a Land Survey Plat or an Improvement Survey Plat, and that it is not to be relied upon for establishment of fence, building, or other future improvement lines.

## NOTE:

- 1) Bearings shown are Grid Bearings of the Colorado State Plane Coordinate System, North Zone, North American Datum 1983/2007. The lineal dimensions as contained herein are based upon the "U.S. Survey Foot."
- 2) Ground elevations are based on an observed GPS elevation (NAVD 1988 DATUM).
- 3) NEAREST EXISTING WELL: SHELTON G25-02, 539'
- 4) IMPROVEMENTS: See LOCATION DRAWING for all visible improvements within 400' of disturbed area.
- 5) SURFACE USE: CROP FIELD
- 6) INSTRUMENT OPERATOR: ADAM KELLY

SURFACE LOCATION  
LATITUDE: 40.28968°N  
LONGITUDE: 104.61103°W  
PDOP: 1.9  
ELEV: 4793'  
1/4, 1/4: NW1/4NE1/4  
NEAREST PROPERTY LINE: 285' NORTH

BOTTOM HOLE  
LATITUDE: 40.30369°N  
LONGITUDE: 104.61140°W

## NOTE

According to Colorado law, you must commence any legal action based upon any defect in this W.L.C. within three years after you discover such defect. In no event, may any action based upon any defect in this survey be commenced more than ten years after the date of the certificate shown hereon. (13-80-105 C.R.S.)

## LEGEND

- = ALIQUOT MONUMENT AS DESCRIBED
- = CALCULATED POSITION

## SHEET 1 OF 2

Brian T. Brinkman-On behalf of Lat40°, Inc.  
Colorado Licensed Professional  
Land Surveyor No. 38175

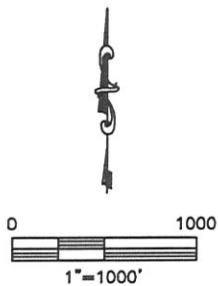
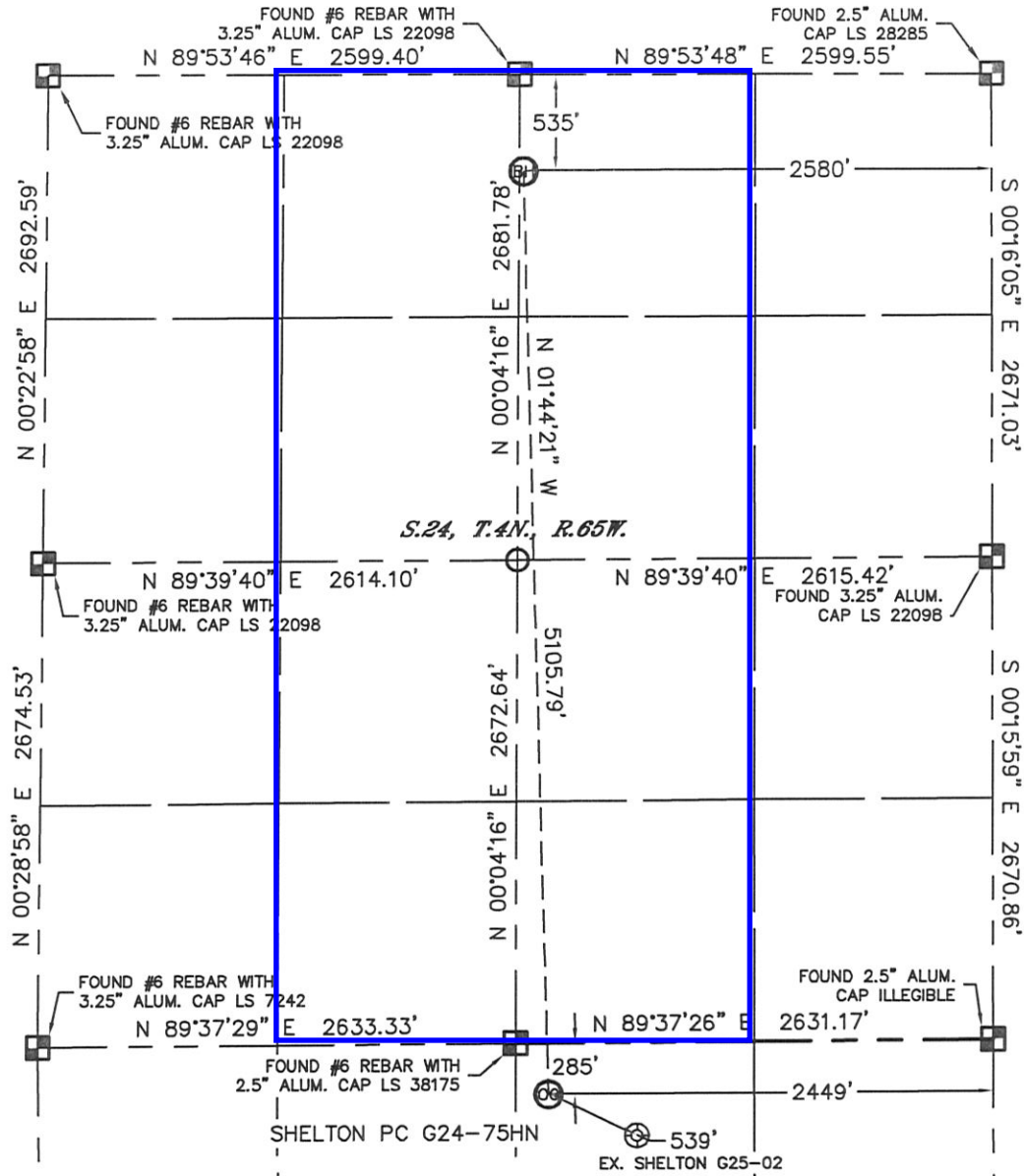
PROJECT#: 2010153



# WELL LOCATION CERTIFICATE

SECTION: 25  
TOWNSHIP: 4N  
RANGE: 65W

THIS MAP DOES NOT REPRESENT A BOUNDARY SURVEY



## NOTE

According to Colorado law, you must commence any legal action based upon any defect in this W.L.C. within three years after you discover such defect. In no event, may any action based upon any defect in this survey be commenced more than ten years after the date of the certificate shown hereon. (13-80-105 C.R.S.)

## LEGEND

- = ALIQUOT MONUMENT AS DESCRIBED
- = CALCULATED POSITION



## SHEET 2 OF 2

Brian T. Brinkman—On behalf of Lat40°, Inc.  
Colorado Licensed Professional  
Land Surveyor No. 38175

PROJECT#: 2010153