

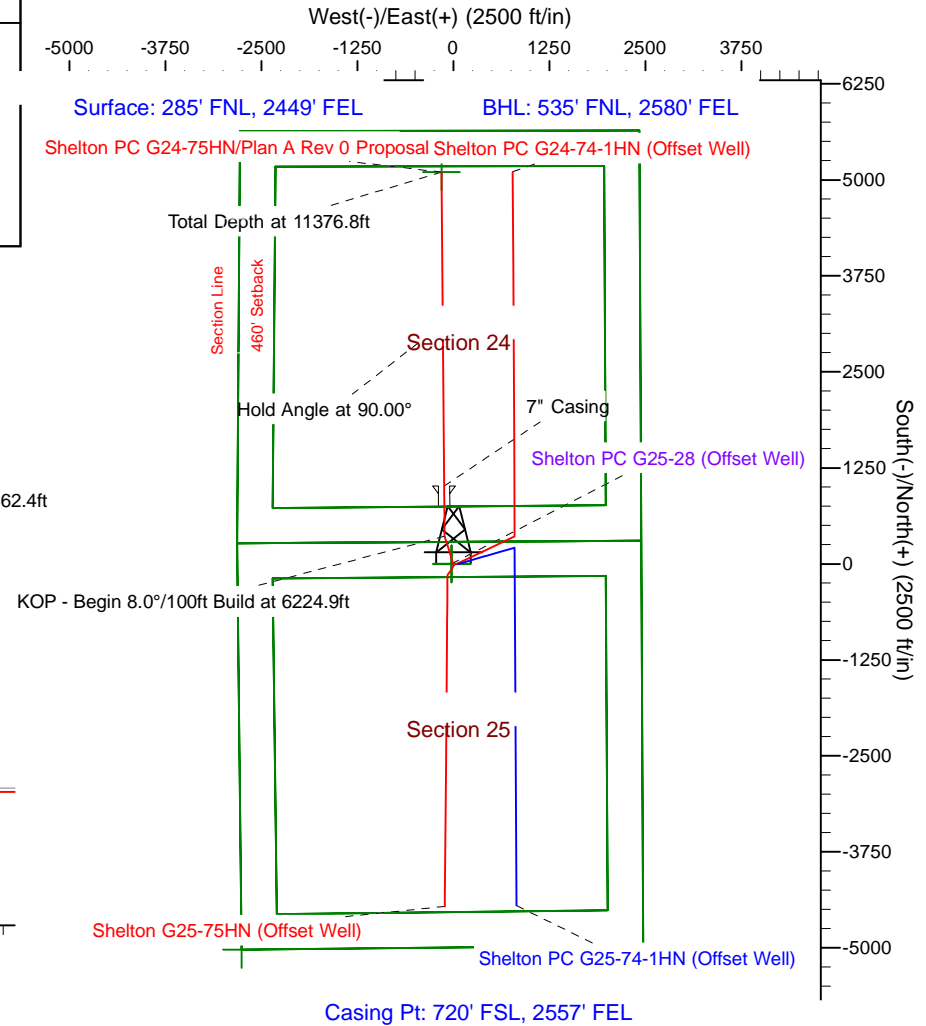
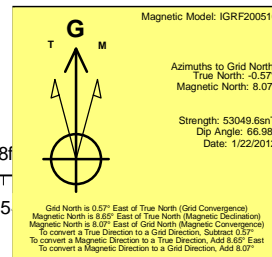
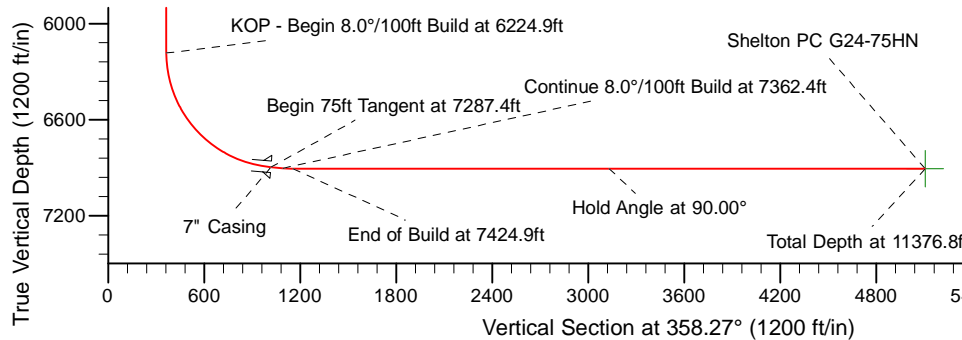
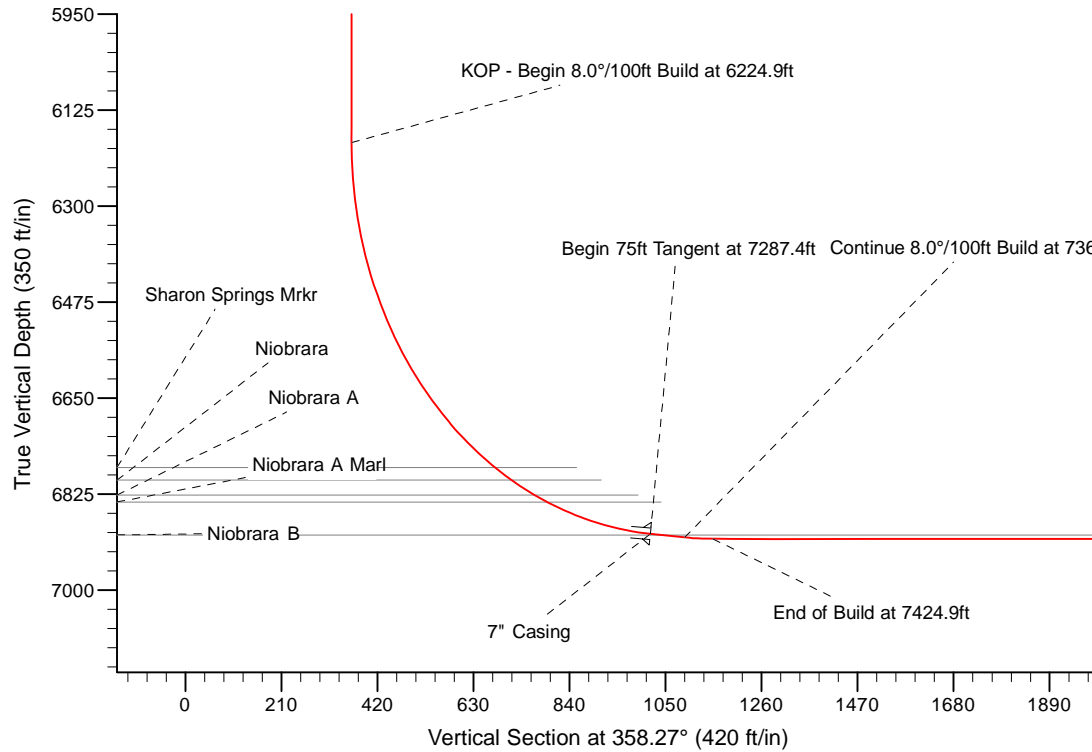
Project: Weld County Colorado (NAD 83)  
Site: Sec.25, T4N, R65W  
Well: Shelton PC G24-75HN  
Wellbore: Plan A Rev 0 (PERMITTING PLAN ONLY)  
Design: Plan A Rev 0 Proposal

# Noble Energy

**HALLIBURTON**  
Sperry Drilling

## SECTION DETAILS

Sec	MD	Inc	Azi	TVD	+N/-S	+E/-W	Dleg	TFace	VSECT	Target
1	0.0	0.00	0.00	0.0	0.0	0.0	0.00	0.00	0.0	
2	1800.0	0.00	0.00	1800.0	0.0	0.0	0.00	0.00	0.0	
3	2360.0	14.00	342.57	2354.4	65.0	-20.4	2.50	342.57	65.5	
4	3356.9	14.00	342.57	3321.7	295.0	-92.6	0.00	0.00	297.7	
5	3916.9	0.00	0.00	3876.1	360.0	-113.0	2.50	180.00	363.3	
6	6224.9	0.00	0.00	6184.2	360.0	-113.0	0.00	0.00	363.3	
7	7287.4	85.00	359.50	6897.7	1013.8	-118.7	8.00	359.50	1016.9	
8	7362.4	85.00	359.50	6904.2	1088.5	-119.4	0.00	0.00	1091.6	
9	7424.9	90.00	359.50	6906.9	1150.9	-119.9	8.00	0.00	1154.0	
10	11376.8	90.00	359.50	6907.0	5102.6	-154.4	0.00	157.48	5105.0	Shelton PC G24-75HN



## WELL DETAILS: Shelton PC G24-75HN (NAD83 Geodetic System)

Ground Level: 4793.0  
Northing: 411363.37 Easting: 989988.14 Latitude: 40° 17' 22.848 N Longitude: 104° 36' 39.708 W

Plan: Plan A Rev 0 Proposal (Shelton PC G24-75HN/Plan A Rev 0 (PERMITTING PLAN ONLY))

Created By: Jose Patino

Date: 7:13, January 23 2012

**OK to submit with 2A as per Noble Drilling**  
**1/24/2012 16:46**