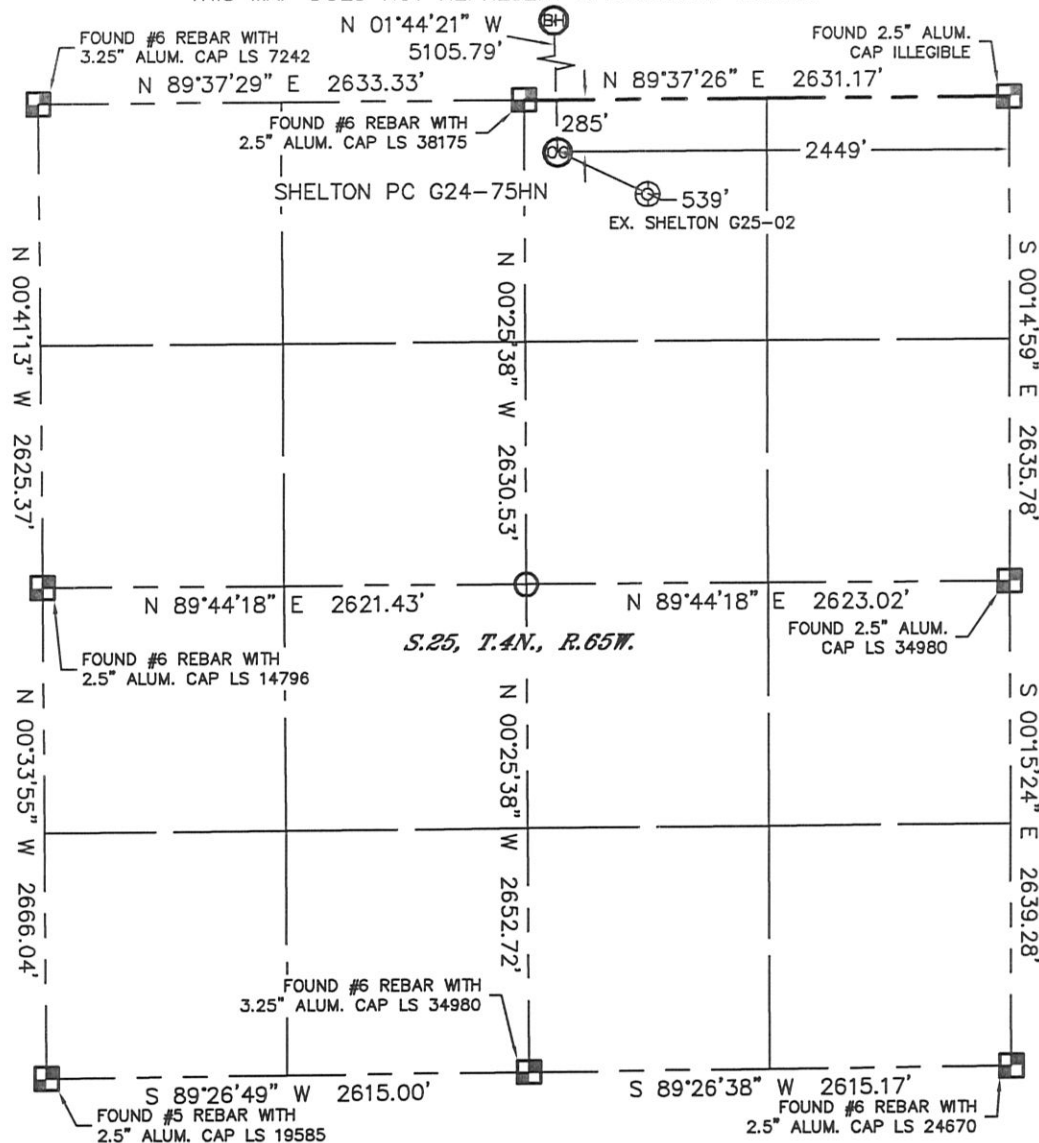


WELL LOCATION CERTIFICATE

SECTION: 25
TOWNSHIP: 4N
RANGE: 65W

THIS MAP DOES NOT REPRESENT A BOUNDARY SURVEY



In accordance with a request from Ryan Hawkins with Noble Energy Inc., Lat40°, Inc. has determined the surface location of the SHELTON PC G24-75HN to be 285' from the NORTH line and 2449' from the EAST line as measured at right angles from the section lines of Section 25, Township 4 North, Range 65 West and the bottom hole to be 535' from the NORTH line and 2580' from the EAST line as measured at right angles from the section lines of Section 24, Township 4 North, Range 65 West of the Sixth Principal Meridian, County of Weld, State of Colorado.

I hereby state that this Well Location Certificate was prepared by me, or under my direct supervision, that the fieldwork was completed on 11/4/11, for and on behalf of Noble Energy Inc. That this is not a Land Survey Plat or an Improvement Survey Plat, and that it is not to be relied upon for establishment of fence, building, or other future improvement lines.

NOTE:

- 1) Bearings shown are Grid Bearings of the Colorado State Plane Coordinate System, North Zone, North American Datum 1983/2007. The lineal dimensions as contained herein are based upon the "U.S. Survey Foot."
- 2) Ground elevations are based on an observed GPS elevation (NAVD 1988 DATUM).
- 3) NEAREST EXISTING WELL: SHELTON G25-02, 539'
- 4) IMPROVEMENTS: See LOCATION DRAWING for all visible improvements within 400' of disturbed area.
- 5) SURFACE USE: CROP FIELD
- 6) INSTRUMENT OPERATOR: ADAM KELLY

SURFACE LOCATION
LATITUDE: 40.28968°N
LONGITUDE: 104.61103°W
PDOP: 1.9
ELEV: 4793'
1/4, 1/4: NW1/4NE1/4
NEAREST PROPERTY LINE: 285' NORTH

BOTTOM HOLE
LATITUDE: 40.30369°N
LONGITUDE: 104.61140°W

NOTE

According to Colorado law, you must commence any legal action based upon any defect in this W.L.C. within three years after you discover such defect. In no event, may any action based upon any defect in this survey be commenced more than ten years after the date of the certificate shown hereon. (13-80-105 C.R.S.)

LEGEND

- = ALIQUOT MONUMENT AS DESCRIBED
- = CALCULATED POSITION

SHEET 1 OF 2

Brian T. Brinkman-On behalf of Lat40°, Inc.
Colorado Licensed Professional
Land Surveyor No. 38175

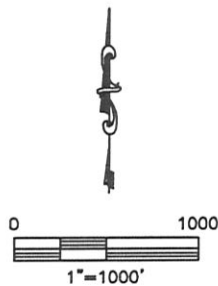
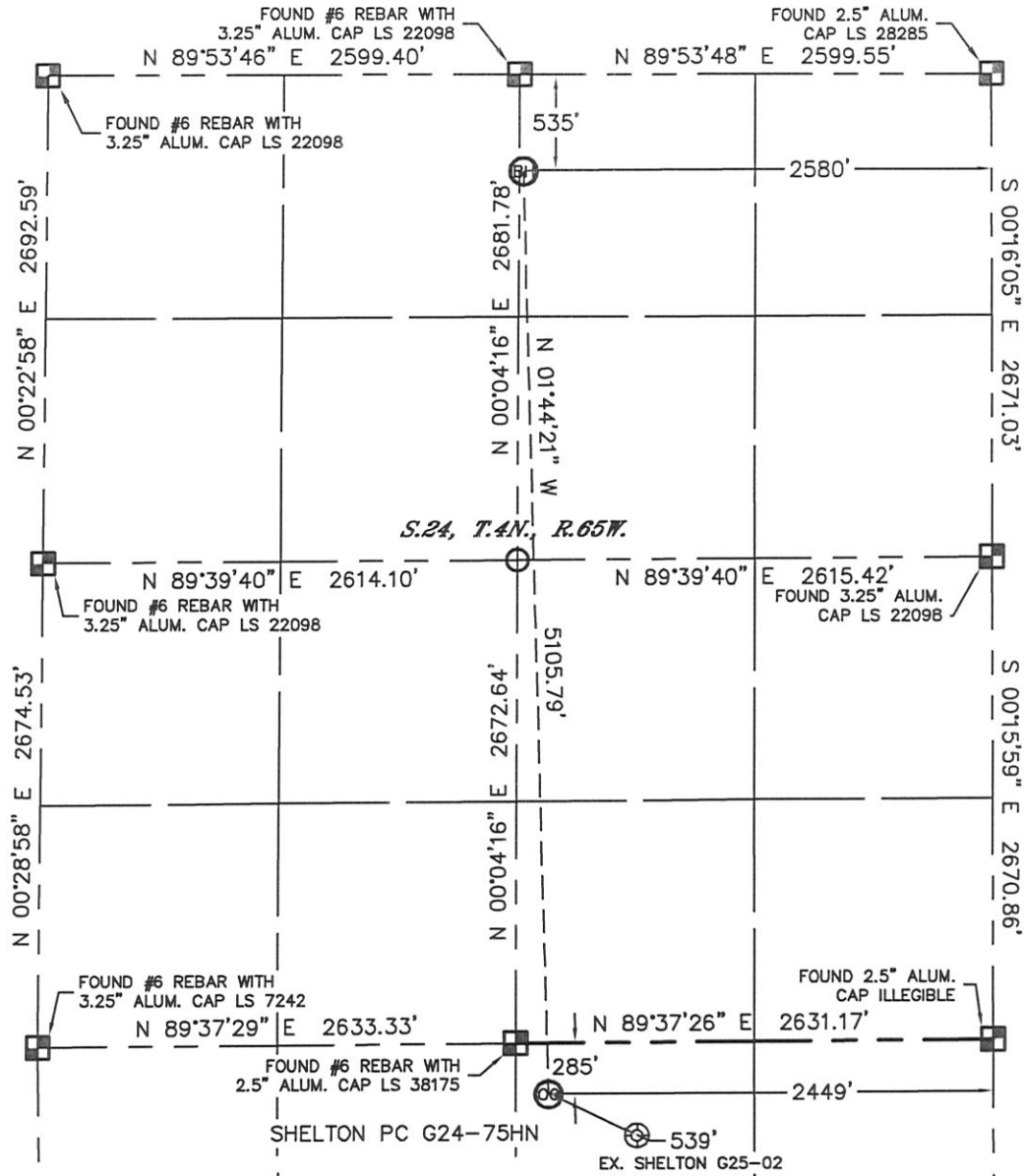
PROJECT#: 2010153



WELL LOCATION CERTIFICATE

SECTION: 25
TOWNSHIP: 4N
RANGE: 65W



THIS MAP DOES NOT REPRESENT A BOUNDARY SURVEY



NOTE

According to Colorado law, you must commence any legal action based upon any defect in this W.L.C. within three years after you discover such defect. In no event, may any action based upon any defect in this survey be commenced more than ten years after the date of the certificate shown hereon. (13-80-105 C.R.S.)

LEGEND

-  = ALIQUOT MONUMENT AS DESCRIBED
-  = CALCULATED POSITION

SHEET 2 OF 2

Brian T. Brinkman—On behalf of Lat40°, Inc.
Colorado Licensed Professional
Land Surveyor No. 38175

PROJECT#: 2010153

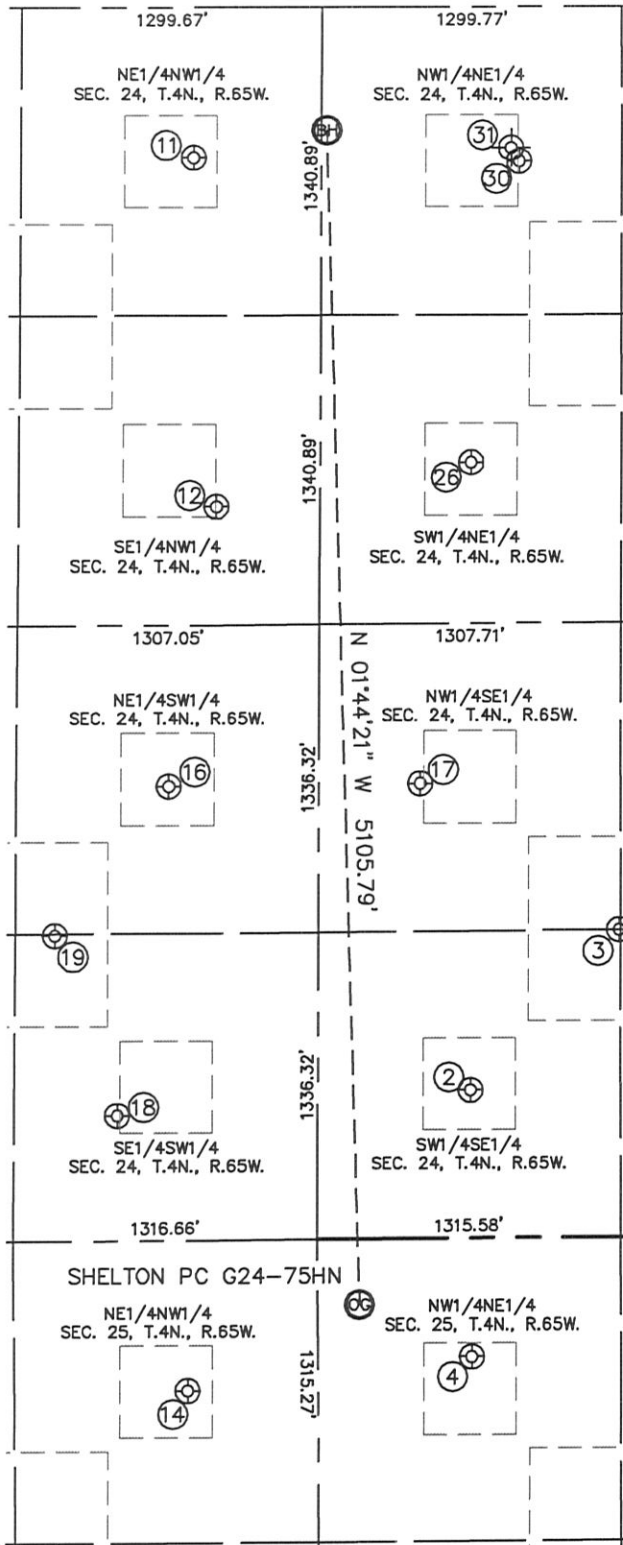


Lat40°, Inc. 1635 Foxtrail Drive, Suite 325 Loveland, CO 970-776-3321

SITE SKETCH

SHELTON PC G24-75HN

SECTION: 25
TOWNSHIP: 4N
RANGE: 65W



②

BURKE 24-2
SW1/4SE1/4
643' FSL
1965' FEL
LAT-40.29223°N
LONG-104.60927°W
PDOP: 1.7
ELEV: 4808

③

BROOMFIELD 24-45
SW1/4SE1/4
1336' FSL
1317' FEL
LAT-40.29412°N
LONG-104.60694°W
PDOP: 3.1
ELEV: 4816

④

SHELTON G25-02
NW1/4NE1/4
517' FNL
1962' FEL
LAT-40.28904°N
LONG-104.60929°W
PDOP: 2.2
ELEV: 4804

⑪

ALLISON 24-1
NE1/4NW1/4
653' FNL
2049' FNL
LAT-40.30338°N
LONG-104.61347°W
PDOP: 1.8
ELEV: 4786'

⑫

API 24-24
SE1/4NW1/4
2169' FNL
2162' FNL
LAT-40.29922°N
LONG-104.61315°W
PDOP: 3.1
ELEV: 4788'

⑭

DABNEY G25-3
NE1/4NW1/4
653' FNL
2065' FNL
LAT-40.28868°N
LONG-104.61371°W
PDOP: 2.5
ELEV: 4786'

⑮

ALLISON 24-2
NE1/4SW1/4
1975' FSL
1969' FNL
LAT-40.29590°N
LONG-104.61392°W
PDOP: 1.6
ELEV: 4779'

⑰

API 24-42
NW1/4SE1/4
1979' FSL
2180' FNL
LAT-40.29589°N
LONG-104.61002°W
PDOP: 2.0
ELEV: 4799'

⑱

API 24-34
SE1/4SW1/4
546' FSL
1761' FNL
LAT-40.29197°N
LONG-104.61476°W
PDOP: 2.0
ELEV: 4781'

⑲

BROOMFIELD 24-35
SE1/4SW1/4
1330' FSL
1483' FNL
LAT-40.29413°N
LONG-104.61571°W
PDOP: 2.0
ELEV: 4773'

⑳

BURKE 24-1
SW1/4NE1/4
1981' FNL
1957' FEL
LAT-40.29971°N
LONG-104.60919°W
PDOP: 2.5
ELEV: 4801'

㉔

MILLER 24-1
NW1/4NE1/4
670' FNL
1747' FEL
LAT-40.30330°N
LONG-104.60842°W
PDOP: 2.1
ELEV: 4820'

㉓

MILLER 24-1 S
(PLUGGED & ABANDONED)
NW1/4NE1/4
614' FNL (COGCC)
1782' FEL (COGCC)
LAT-40.30330°N
(COGCC)
LONG-104.608546°W
(COGCC)
PDOP: -
ELEV: 4820' (COGCC)

