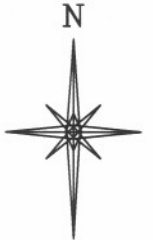
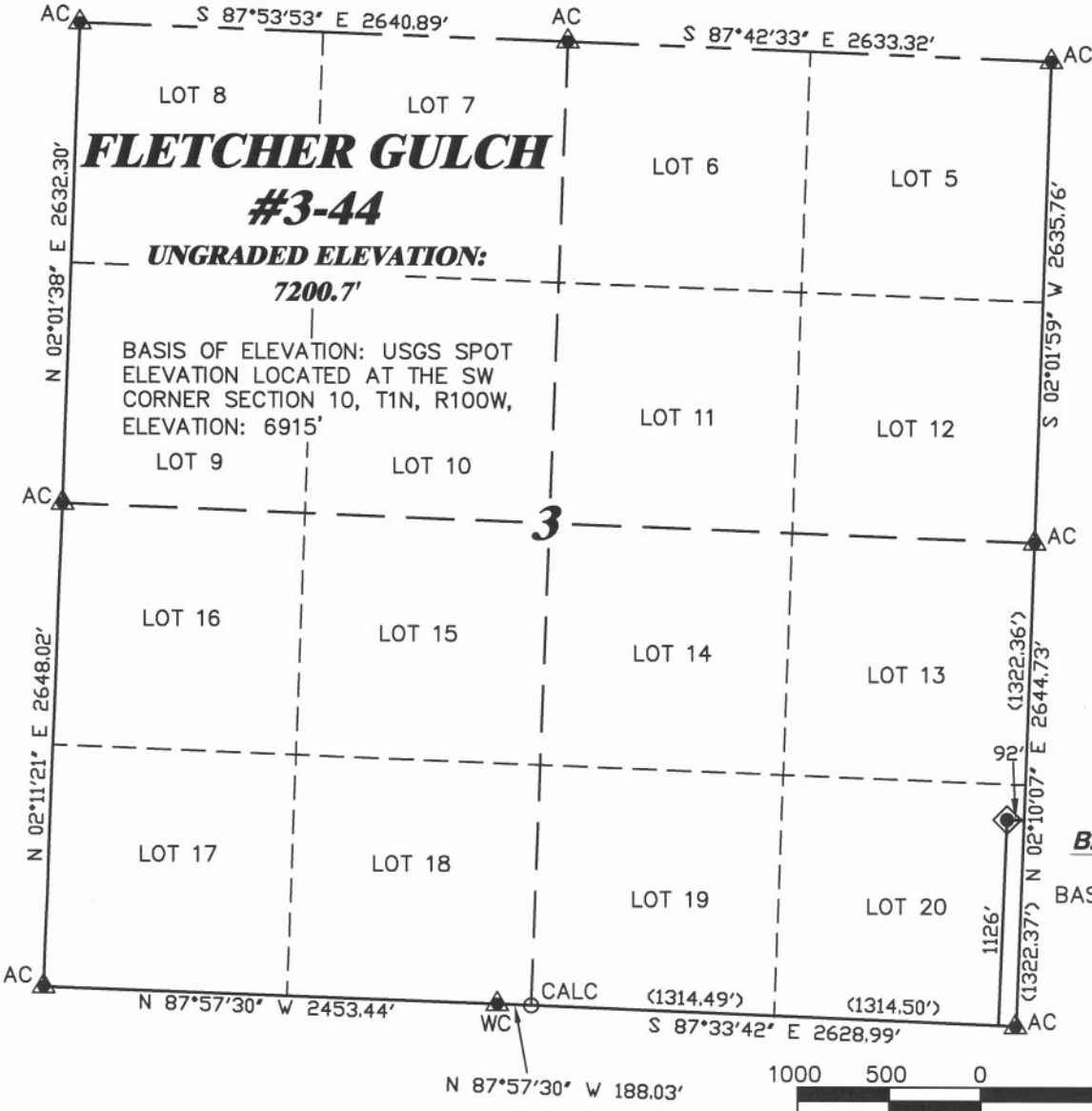


**R. 100 W.**



SCALE 1" = 1000'

**T. 1 N.**



**LATITUDE (NAD 83)**  
NORTH 40.080587 DEG.  
**LONGITUDE (NAD 83)**  
WEST 108.594265 DEG.

**LATITUDE (NAD 27)**  
NORTH 40.080613 DEG.  
**LONGITUDE (NAD 27)**  
WEST 108.593610 DEG.

**NORTHING**  
287306.36  
**EASTING**  
1134491.37

**BASIS OF BEARING/DATUM**  
SPCS CO NORTH NAD 27  
BASED ON DRG CONTROL POINT  
"CNT 1N 100W"

**SURVEYOR'S STATEMENT**

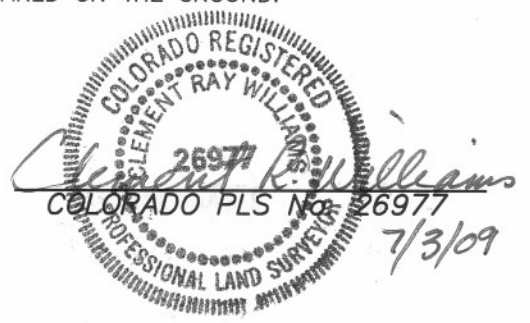
I, CLEMENT R. WILLIAMS, OF ROCK SPRINGS, WYOMING, HEREBY STATE: THIS MAP WAS MADE FROM NOTES TAKEN DURING AN ACTUAL FIELD SURVEY DONE UNDER MY DIRECT SUPERVISION ON JUNE 30, 2009 AND THAT THIS PLAT CORRECTLY SHOWS THE LOCATION OF FLETCHER GULCH #3-4 AS STAKED ON THE GROUND.

GPS OPERATOR KIM LITTLE  
OBSERVED A PDOP OF 3.2.  
ALL GPS OBSERVATIONS ARE IN  
COMPLIANCE WITH COGCC RULE No.215.

**NOTES**  
HIGH PLATEAU DESERT  
NO EXISTING FEATURES WITHIN  
400' RADIUS OF WELL SITE.

**LEGEND**

- ◆ WELL LOCATION
- CALCULATED CORNER
- FOUND MONUMENT
- ▲ PREVIOUSLY FOUND MONUMENT



<p><b>DRG RIFFIN &amp; ASSOCIATES, INC.</b> (307) 362-5028 1414 ELK ST., ROCK SPRINGS, WY 82901</p>		<p><b>PLAT OF DRILLING LOCATION FOR GENESIS GAS &amp; OIL LLC.</b></p>	
		<p><b>1126' F/SL &amp; 92' F/EL, SECTION 3, T. 1 N., R. 100 W., 6th P.M. RIO BLANCO COUNTY, COLORADO</b></p>	
DRAWN: 8/26/08 - MML	SCALE: 1" = 1000'		
REVISED: 7/2/09 - MMM	DRG JOB No. 16506		
LOCATION MOVE	EXHIBIT 1		