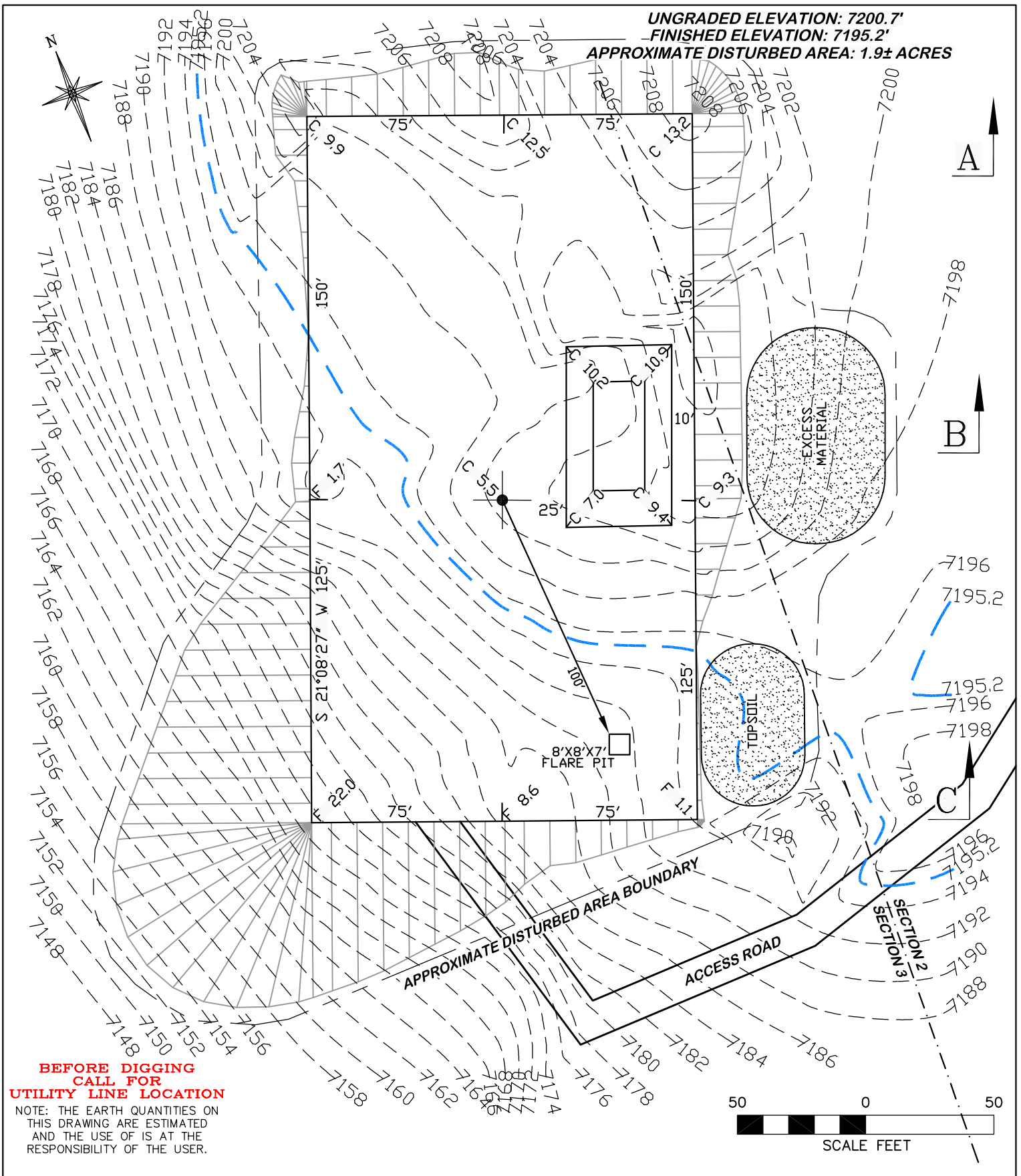


DRG RIFFIN & ASSOCIATES, INC.
 1414 ELK ST., ROCK SPRINGS, WY 82901
 (307) 362-5028

**GENESIS GAS & OIL LLC.
 FLETCHER GULCH #3-44**

ESTIMATED EARTHWORK

	ITEM	CUT	FILL	TOPSOIL	EXCESS
DRAWN: 8/26/08 - MML	PAD	5092 CY	3688 CY	764 CY	640 CY
REVISED: 7/7/09 - MMM	PIT	466 CY			466 CY
LOCATION MOVE	TOTALS	5558 CY	3688 CY	764 CY	1106 CY



DRG RIFFIN & ASSOCIATES, INC.
 (307) 362-5028 1414 ELK ST., ROCK SPRINGS, WY 82901

GENESIS GAS & OIL LLC.
FLETCHER GULCH #3-44

DRAWN: 8/26/08 - MML

SCALE: 1" = 50'

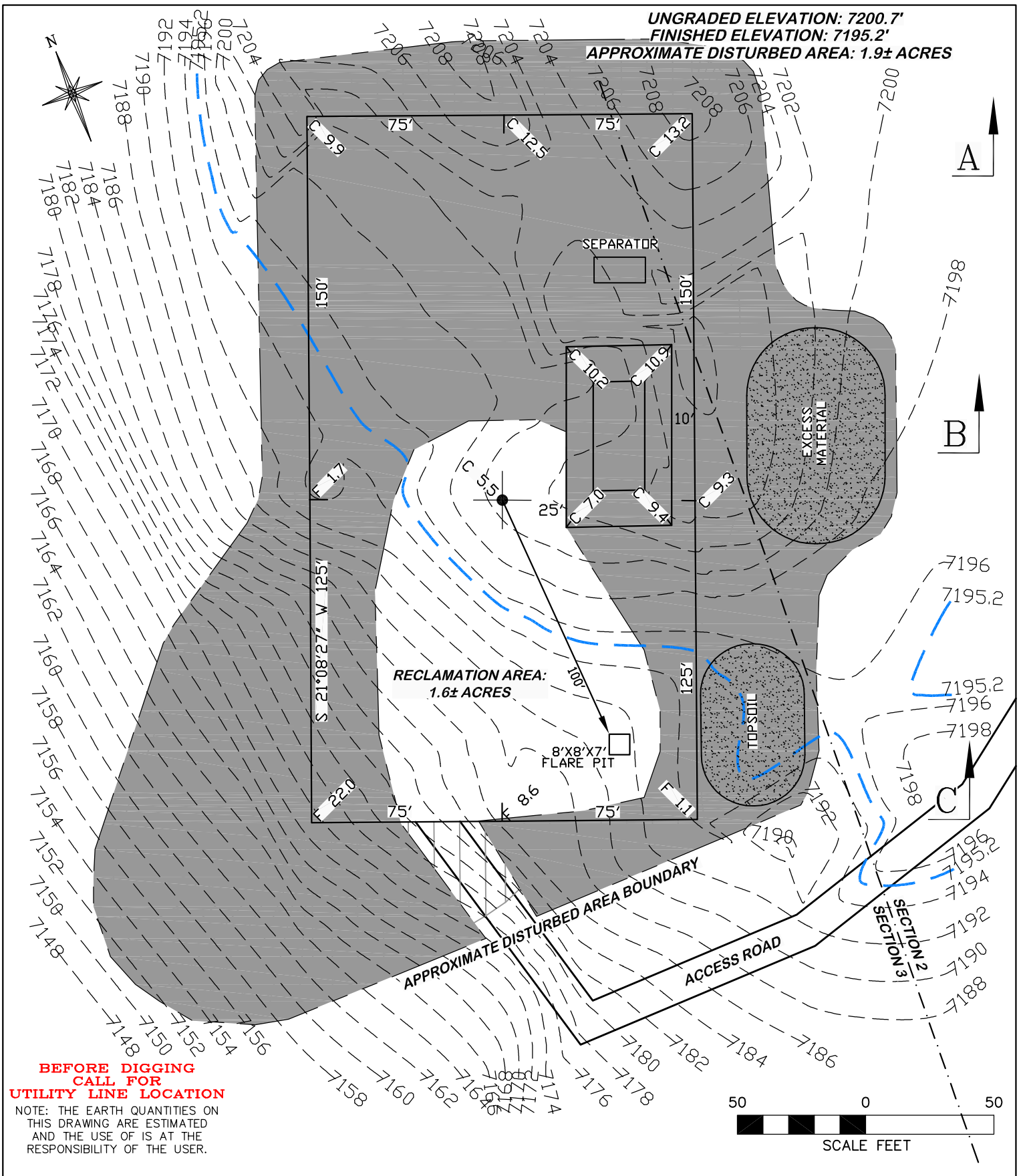
REVISED: 7/7/09 - MMM

DRG JOB No. 16506

LOCATION MOVE

EXHIBIT 2A

UNGRADED ELEVATION: 7200.7'
FINISHED ELEVATION: 7195.2'



DRG RIFFIN & ASSOCIATES, INC.
 (307) 362-5028 1414 ELK ST., ROCK SPRINGS, WY 82901

GENESIS GAS & OIL LLC.
FLETCHER GULCH #3-44

DRAWN: 5/29/09 - MMM

SCALE: 1" = 50'

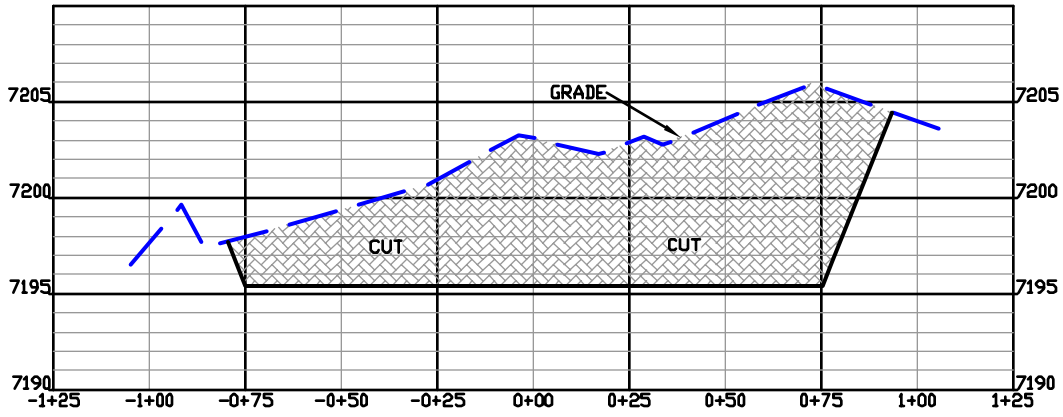
REVISED: 7/7/09 - MMM

DRG JOB No. 16506

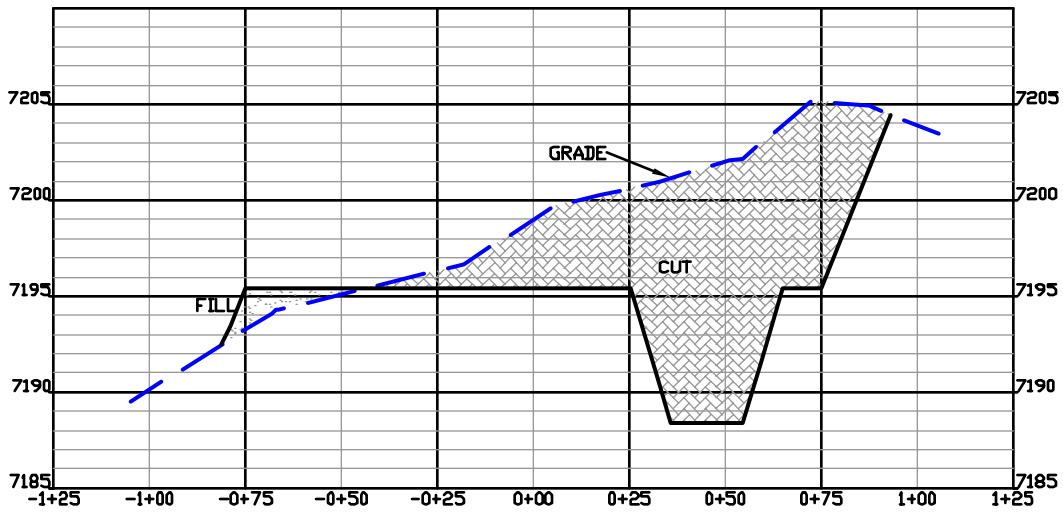
LOCATION MOVE

EXHIBIT 2B

UNGRADED ELEVATION: 7200.7'
FINISHED ELEVATION: 7195.2'



A



B



DRG RIFFIN & ASSOCIATES, INC.
 1414 ELK ST., ROCK SPRINGS, WY 82901

(307) 362-6028

DRAWN: 8/26/08 - MML

HORZ. 1" = 50' VERT. 1" = 10'

REVISED: 7/3/09 - MMM

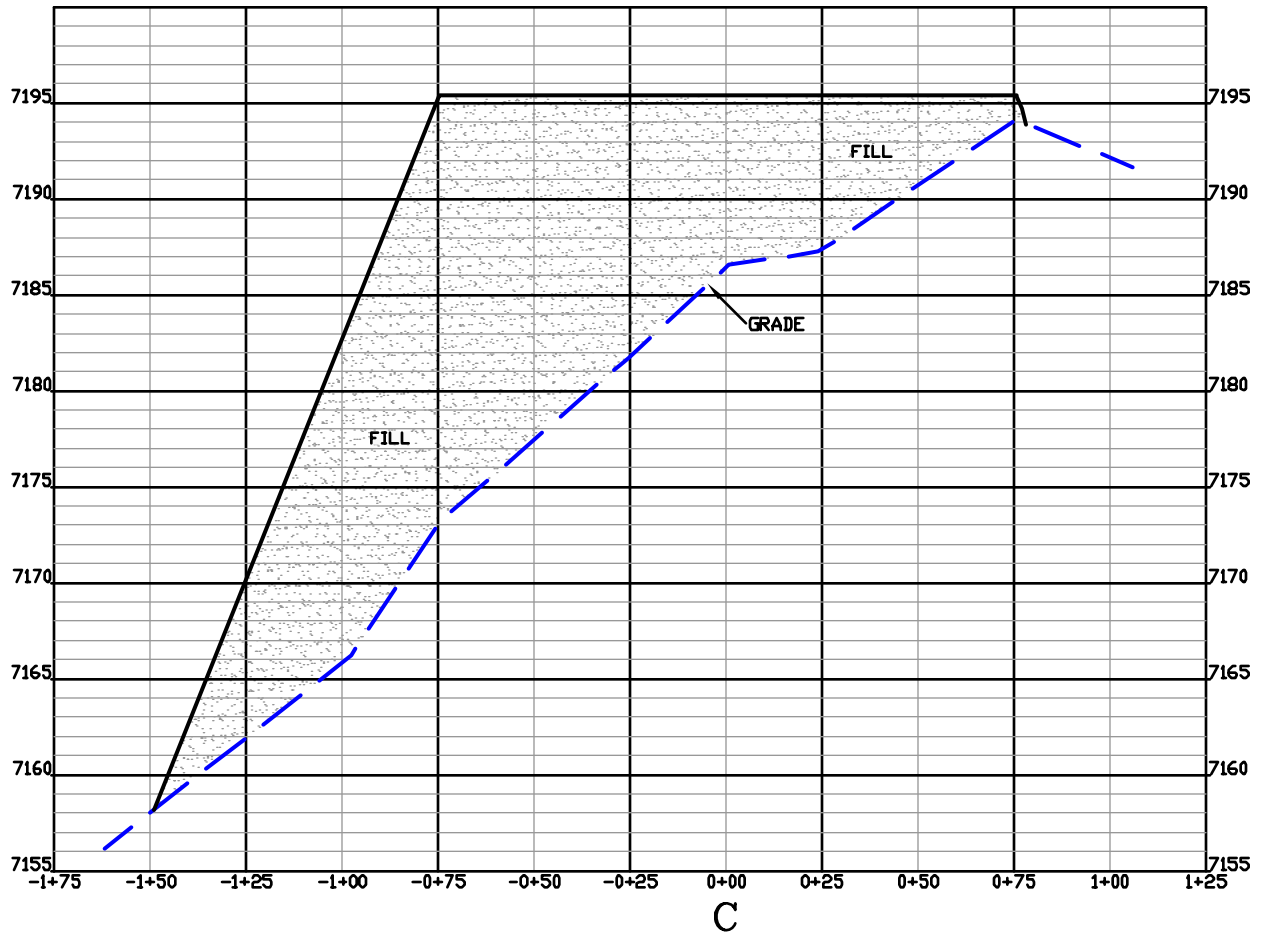
DRG JOB No. 16506

LOCATION MOVE

EXHIBIT 3

GENESIS GAS & OIL LLC.
FLETCHER GULCH #3-44

UNGRADED ELEVATION: 7200.7'
 FINISHED ELEVATION: 7195.2'



C



DRG RIFFIN & ASSOCIATES, INC.
 1414 ELK ST., ROCK SPRINGS, WY 82901

(307) 382-5028

DRAWN: 8/26/08 - MML

HORZ. 1" = 50' VERT. 1" = 10'

REVISED: 7/3/09 - MMM

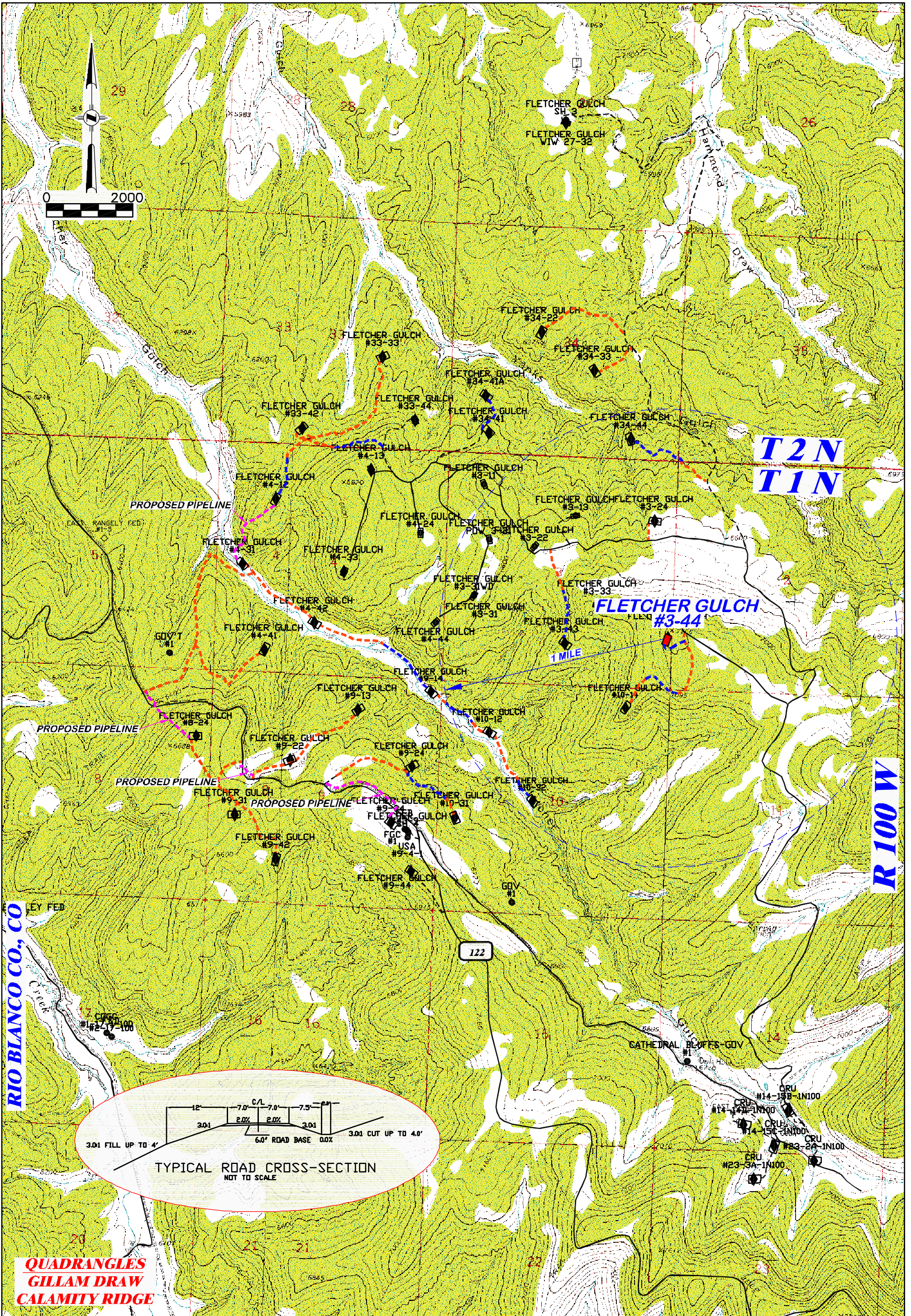
DRG JOB No. 16506

LOCATION MOVE

EXHIBIT 3

GENESIS GAS & OIL LLC.
FLETCHER GULCH #3-44

UNGRADED ELEVATION: 7200.7'
 FINISHED ELEVATION: 7195.2'



KEY

- LOCATIONS WITH PIPELINES IN CENTER OF ROAD
- LOCATIONS WITH PIPELINES IN DITCH BESIDE ROAD

DRG RIFFIN & ASSOCIATES, INC.
 (307) 362-5028 1414 ELK ST., ROCK SPRINGS, WY 82901

DRAWN: 5/29/09 - MMM	SCALE: 1" = 2000'
REVISED: 7/7/09 - MMM	DRG JOB No.: 16506
PIPELINES (ROAD VS. DITCH)	EXHIBIT 4A

MAP OF FLETCHER GULCH PIPELINES FOR GENESIS GAS & OIL LLC. FLETCHER GULCH #3-44