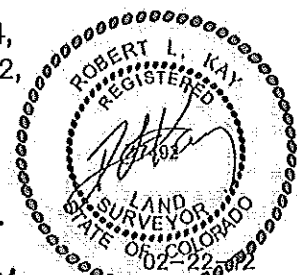


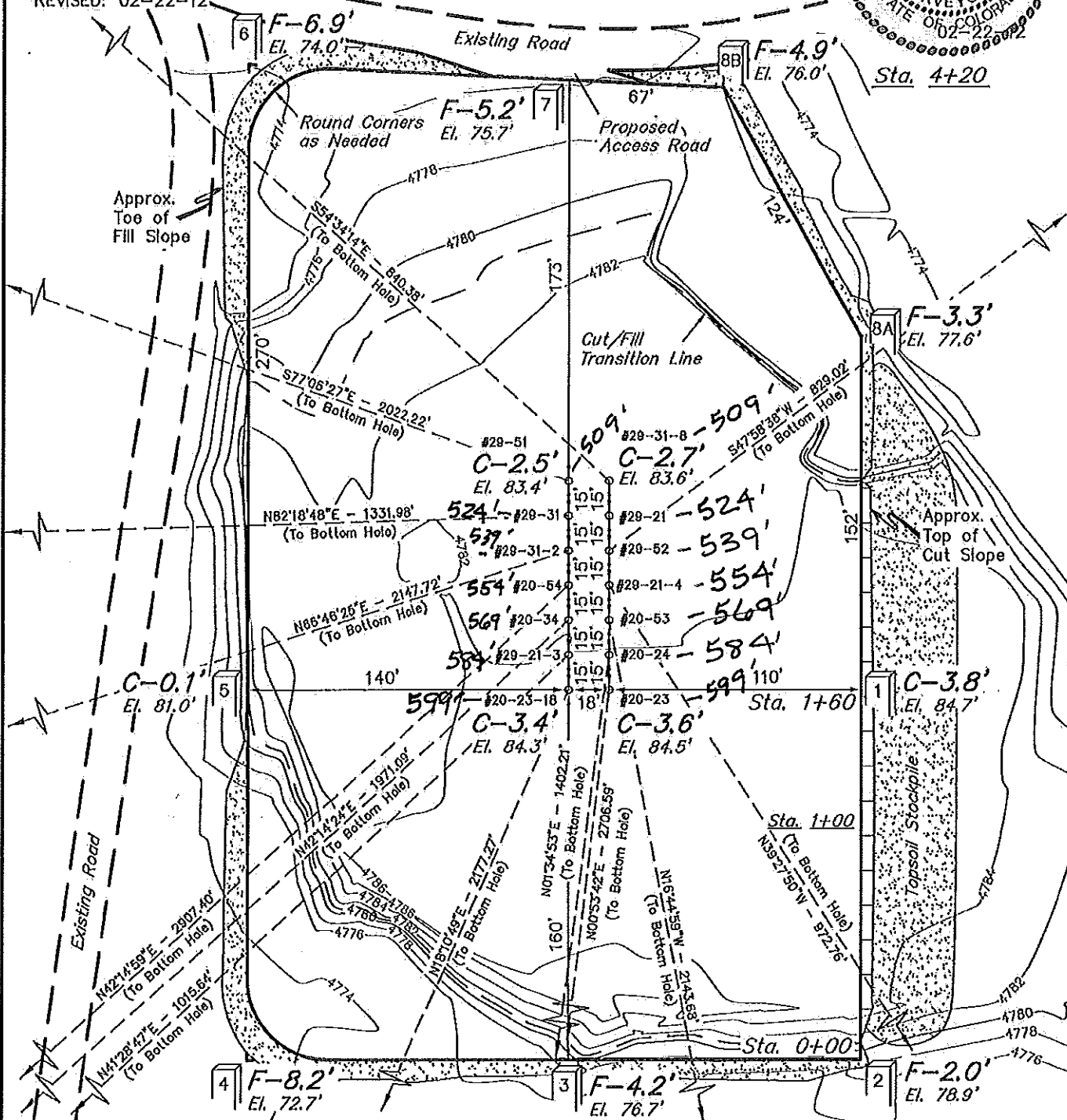
GREAT WESTERN OIL & GAS COMPANY CONSTRUCTION LAYOUT FOR

FIGURE #1

H-Y #29-21, #20-23, #20-24, #20-53, #29-21-4,
#29-52, #20-23-18, #29-21-3, #20-34, #29-31-2,
#29-31, #29-51, #29-31-8 & #20-54
SECTION 29, T6N, R67W, 6th P.M.
NE 1/4 NW 1/4



SCALE: 1" = 60'
DATE: 02-10-12
DRAWN BY: S.L.
REVISED: 02-22-12



Elev. Ungraded Ground At #29-21 Loc. Stake = 4783.8'
FINISHED GRADE ELEV. AT #29-21 LOC. STAKE = 4780.9'

UINTAH ENGINEERING & LAND SURVEYING
85 So. 200 East * Vernal, Utah 84078 * (435) 789-1017