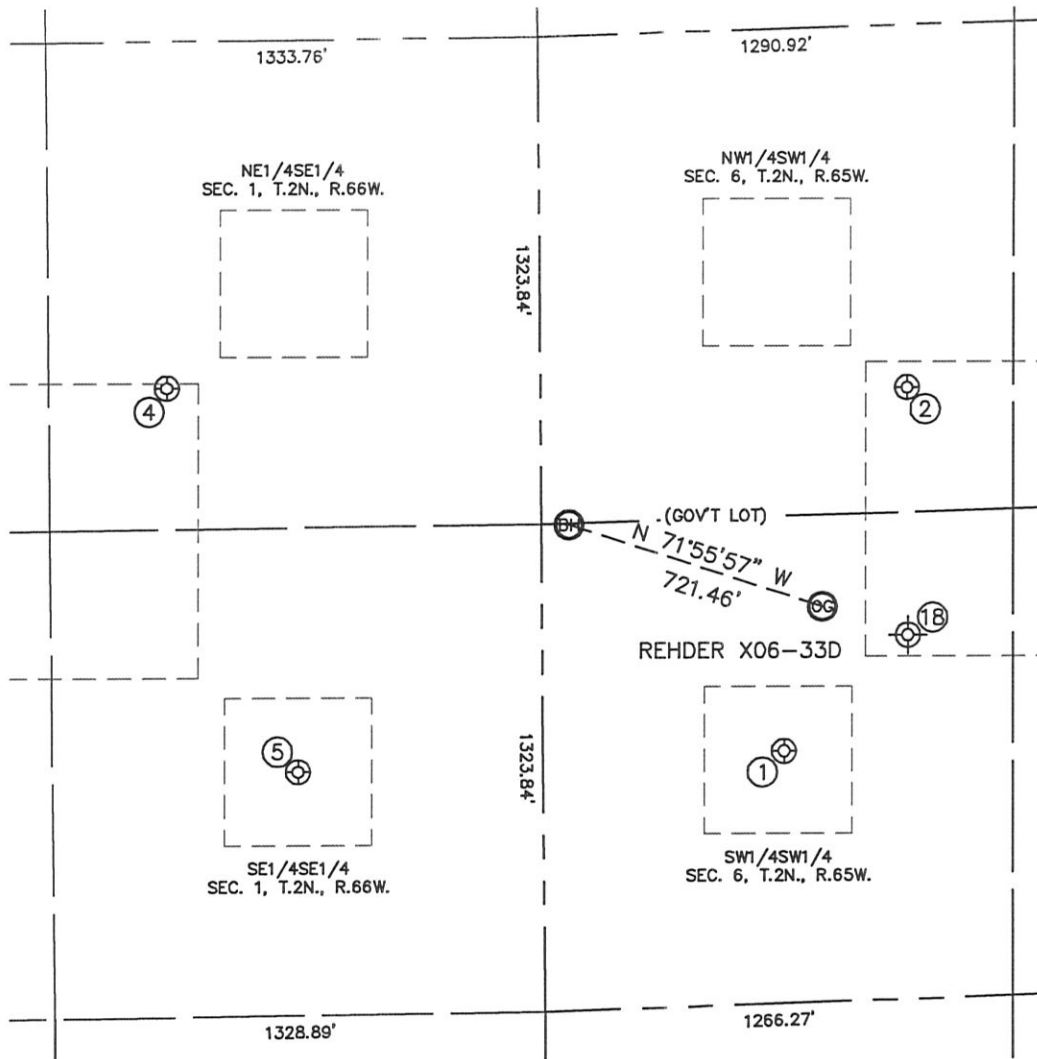


DATE: 12/22/11
PROJECT#: 2011343

SITE SKETCH

REHDER X06-33D

SECTION: 6
TOWNSHIP: 2N
RANGE: 65W



①

REHDER X6-13
SW1/4SW1/4 (GOV'T LOT)
686' FSL
652' FWL
LAT-40.16210°N
LONG-104.71351°W
PDOP:1.5
ELEV: 4975'

②

REHDER X6-03D
NW1/4SW1/4 (GOV'T LOT)
1662' FSL
993' FWL
LAT-40.16480°N
LONG-104.71229°W
PDOP:1.5
ELEV: 4978'

④

UPRR PAN AM
"D" TRUE 1
NE1/4SE1/4
1707' FSL
1013' FEL
LAT-40.16485°N
LONG-104.71947°W
PDOP:1.5
ELEV: 5002'

⑤

DOLPH 18-1
SE1/4SE1/4
662' FSL
665' FEL
LAT-40.16199°N
LONG-104.71823°W
PDOP:1.5
ELEV: 4988'

⑮

REHDER 1
(PLUGGED & ABANDONED)
SW1/4SW1/4 (COGCC)
990' FSL (COGCC)
990' FWL (COGCC)
LAT-40.162757°N (COGCC)
LONG-104.712378°W (COGCC)
PDOP:N/A
ELEV: 4973' (COGCC)

