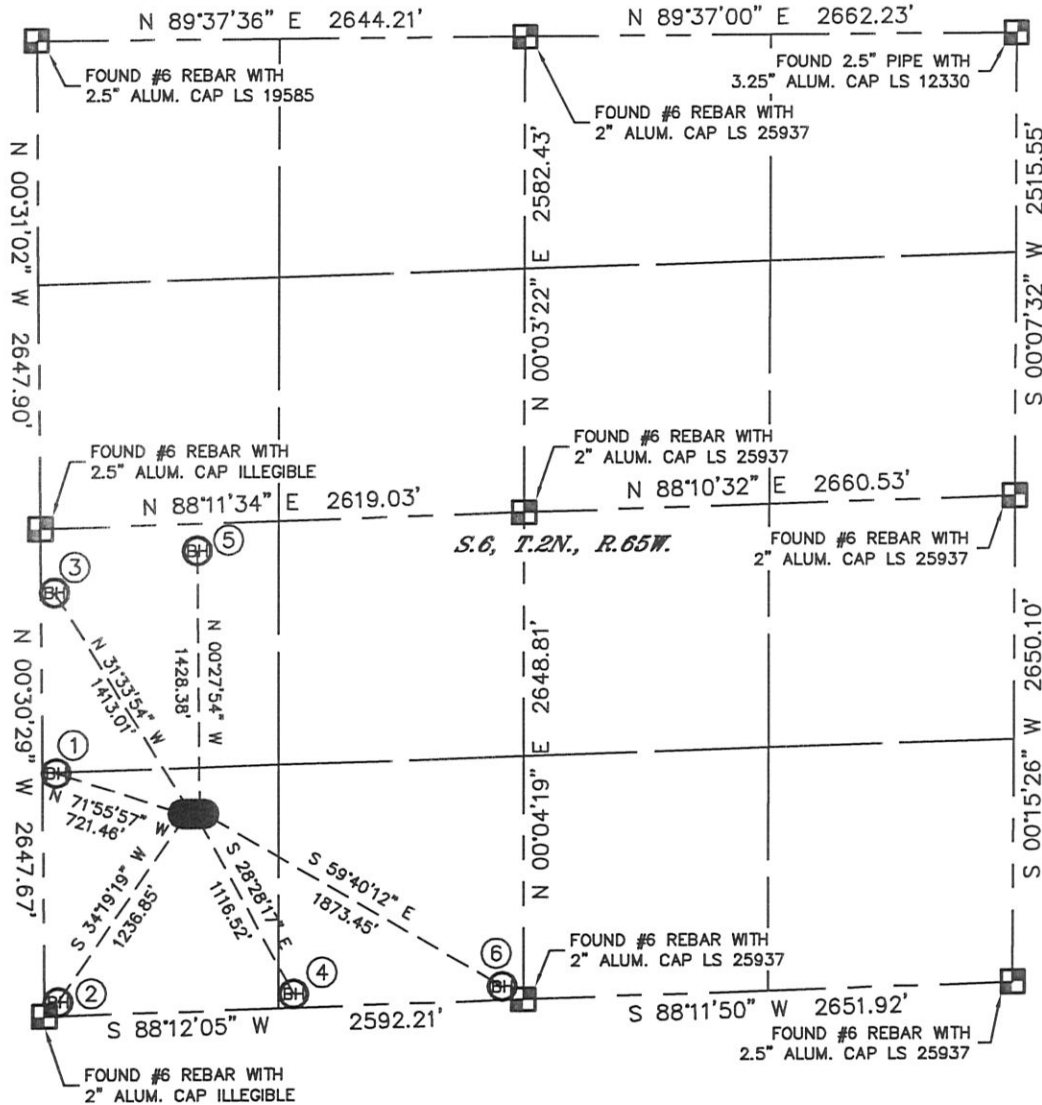


MULTI-WELL PLAN

REHDER X06-33D, 32D, 20D
THOMSEN USX X07-28D, 29D, 30D
THIS MAP DOES NOT REPRESENT A BOUNDARY SURVEY

SECTION: 6
TOWNSHIP: 2N
RANGE: 65W

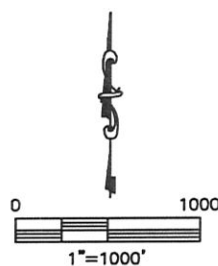


① -BOTTOM HOLE- REHDER X06-33D 1320' FSL 75' FWL LAT-40.16380°N LONG-104.71558°W	② -BOTTOM HOLE- THOMSEN USX X07-30D 75' FSL 75' FWL LAT-40.16038°N LONG-104.71558°W	③ -BOTTOM HOLE- REHDER X06-32D 2300' FSL 75' FWL LAT-40.16649°N LONG-104.71558°W	④ -BOTTOM HOLE- THOMSEN USX X07-29D 75' FSL 1350' FWL LAT-40.16046°N LONG-104.71102°W	⑤ -BOTTOM HOLE- REHDER X06-20D 2500' FSL 850' FWL LAT-40.16709°N LONG-104.71280°W	⑥ -BOTTOM HOLE- THOMSEN USX X07-28D 75' FSL 2480' FWL LAT-40.16053°N LONG-104.70697°W
--	---	--	---	---	---

LEGEND

■ = ALIQUOT MONUMENT AS DESCRIBED

○ = CALCULATED POSITION



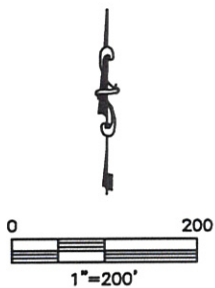
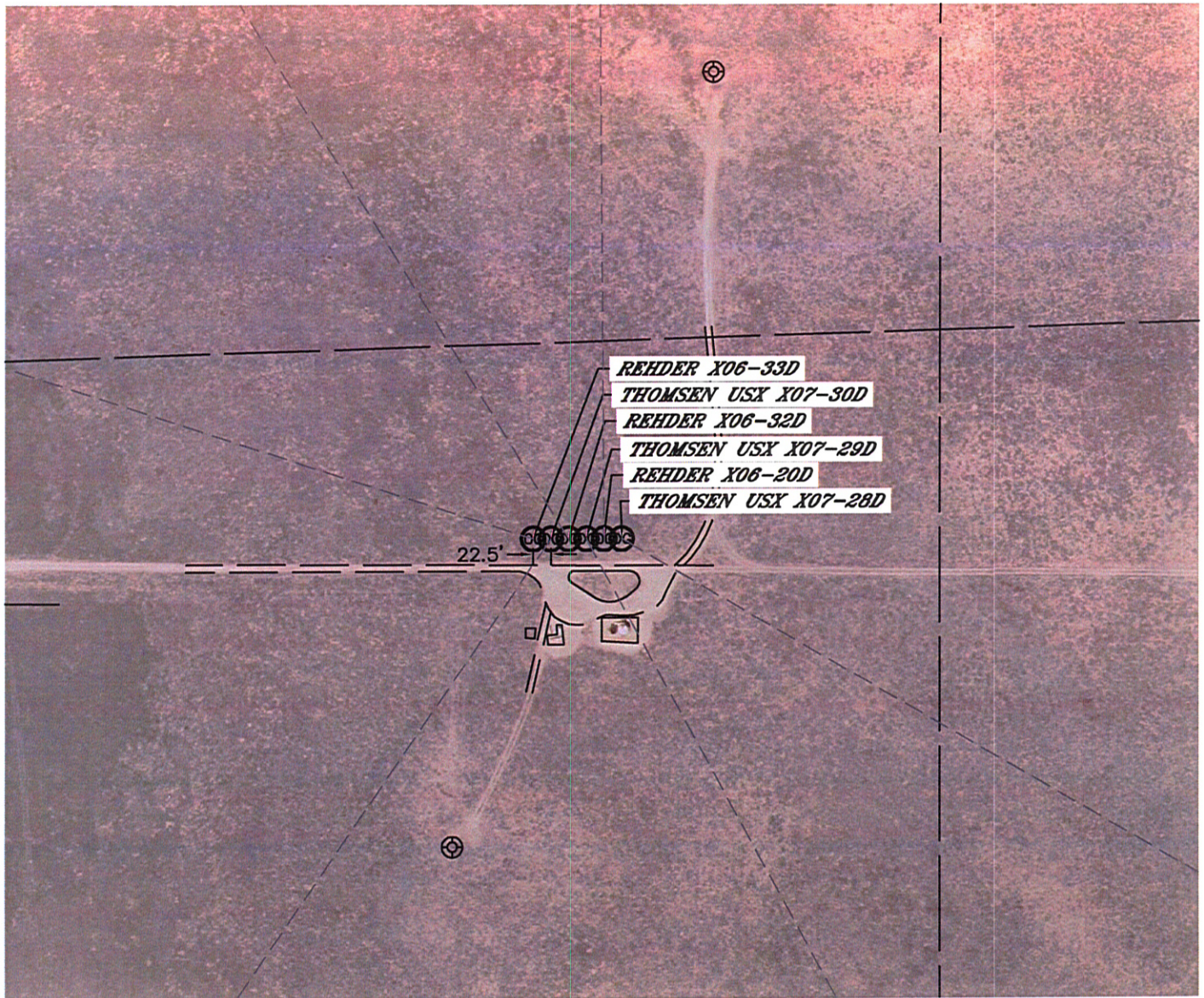
DATE: rev. 1/10/2012
PROJECT#: 2011343

Lat40°, Inc. 1635 Foxtrail Drive, Suite 325 Loveland, CO 970-776-3321

MULTI-WELL PLAN

REHDER X06-33D, 32D, 20D
THOMSEN USX X07-28D, 29D, 30D

SECTION: 6
TOWNSHIP: 2N
RANGE: 65W



DATE: rev. 1/10/2012
PROJECT#: 2011343