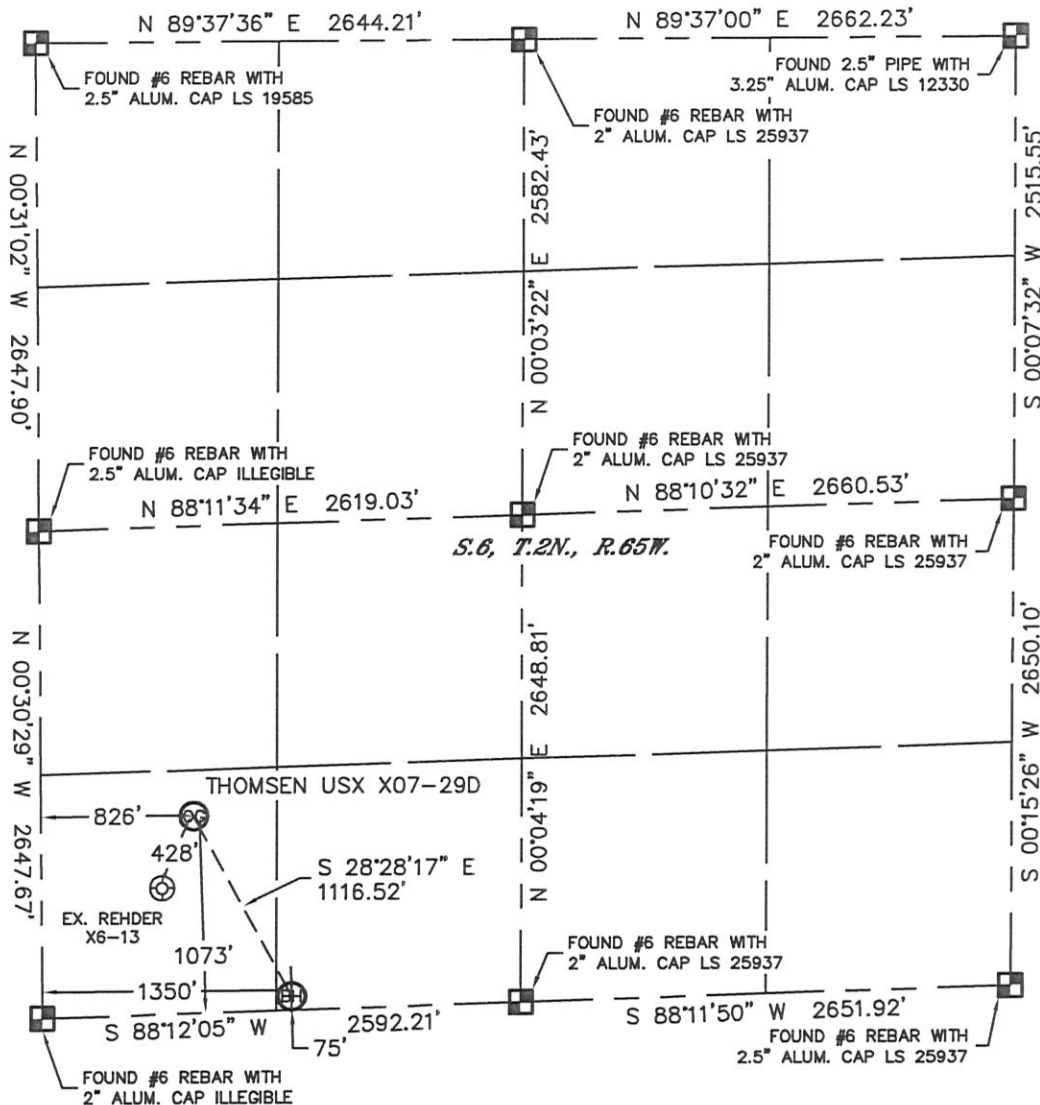


# WELL LOCATION CERTIFICATE

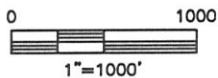
THIS MAP DOES NOT REPRESENT A BOUNDARY SURVEY

SECTION: 6  
TOWNSHIP: 2N  
RANGE: 65W



In accordance with a request from Ryan Hawkins with Noble Energy Inc. Lat40°, Inc. has determined the surface location of the THOMSEN USX X07-29D to be 1073' from the SOUTH line and 826' from the WEST line and the bottom hole to be 75' from the SOUTH line and 1350' from the WEST line as measured at right angles from the section lines of Section 6, Township 2 North, Range 65 West of the Sixth Principal Meridian, County of Weld, State of Colorado.

I hereby state that this Well Location Certificate was prepared by me, or under my direct supervision, that the fieldwork was completed on 12/9/11, for and on behalf of Noble Energy Inc. That this is not a Land Survey Plat or an Improvement Survey Plat, and that it is not to be relied upon for establishment of fence, building, or other future improvement lines.



**NOTE:**

- 1) Bearings shown are Grid Bearings of the Colorado State Plane Coordinate System, North Zone, North American Datum 1983/2007. The lineal dimensions as contained herein are based upon the "U.S. Survey Foot."
- 2) Ground elevations are based on an observed GPS elevation (NAVD 1988 DATUM).
- 3) NEAREST EXISTING WELL: REHDER X6-13, 428'
- 4) IMPROVEMENTS: See LOCATION DRAWING for all visible improvements within 400' of disturbed area.
- 5) SURFACE USE: RANGELAND
- 6) INSTRUMENT OPERATOR: WYATT HALL



SURFACE LOCATION  
LATITUDE: 40.16317°N  
LONGITUDE: 104.71289°W  
PDOP: 1.1  
ELEV: 4978'  
1/4, 1/4: SW1/4SW1/4  
NEAREST PROPERTY LINE: 251' N

BOTTOM HOLE  
LATITUDE: 40.16046°N  
LONGITUDE: 104.71102°W

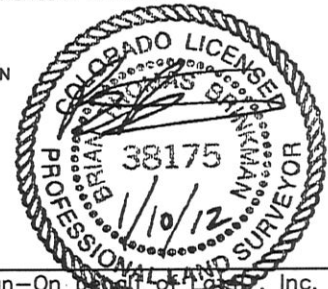
**NOTE**

According to Colorado law, you must commence any legal action based upon any defect in this W.L.C. within three years after you discover such defect. In no event, may any action based upon any defect in this survey be commenced more than ten years after the date of the certificate shown hereon. (13-80-105 C.R.S.)

**LEGEND**

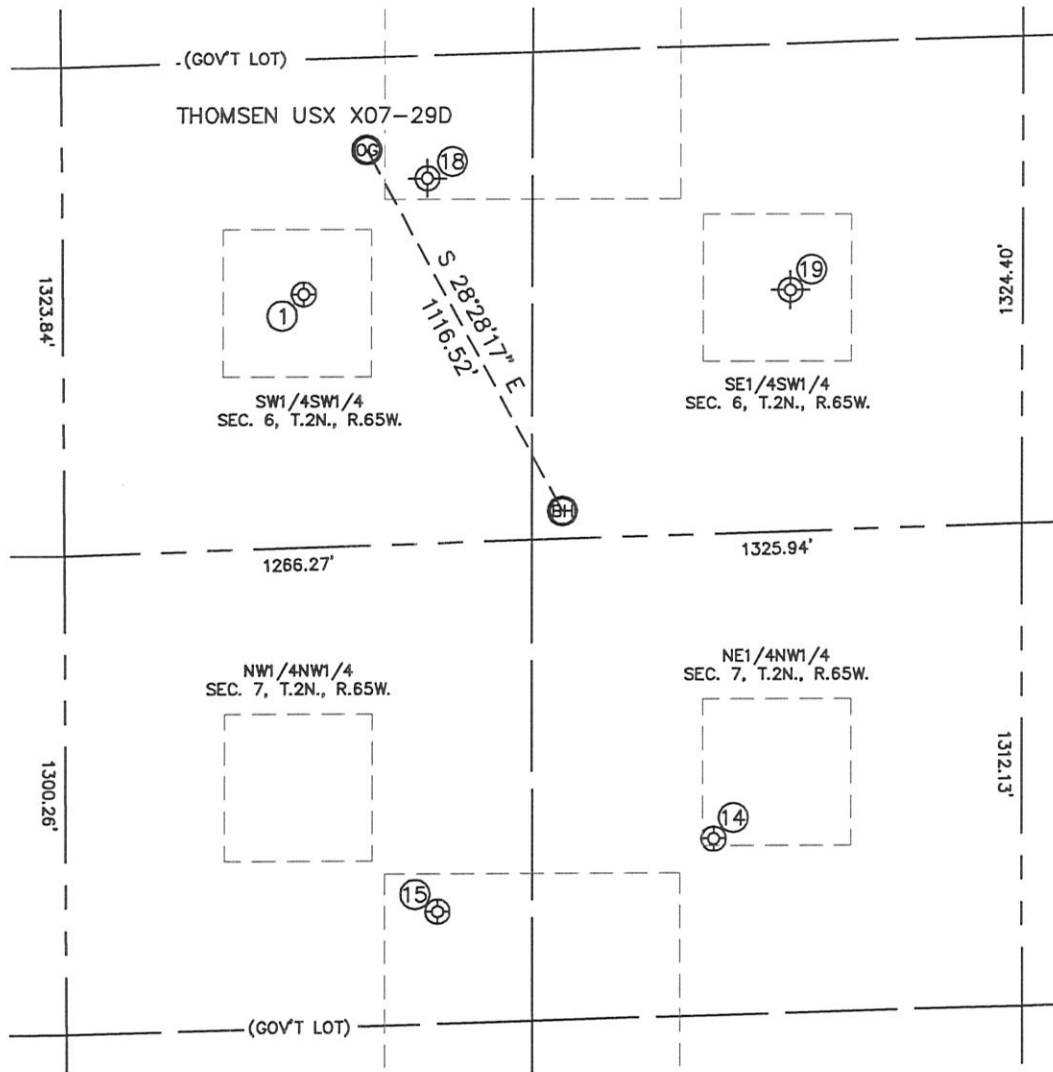
-  = ALIQUOT MONUMENT AS DESCRIBED
-  = CALCULATED POSITION

Brian T. Brinkman—On behalf of Lat40°, Inc.  
Colorado Licensed Professional Land Surveyor No. 38175  
DATE: rev. 1/10/2012  
PROJECT#: 2011343



# SITE SKETCH THOMSEN USX X07-29D

SECTION: 6  
TOWNSHIP: 2N  
RANGE: 65W



①

REHDER X6-13  
SW1/4SW1/4 (GOV'T LOT)  
686' FSL  
652' FWL  
LAT-40.16210°N  
LONG-104.71351°W  
PDOP:1.5  
ELEV: 4975'

⑭

THOMSEN USX X7-3  
NE1/4NW1/4  
829' FNL  
1754' FWL  
LAT-40.15801°N  
LONG-104.70958°W  
PDOP:1.5  
ELEV: 4946'

⑮

THOMSEN USX X7-4  
NW1/4NW1/4 (GOV'T LOT)  
1001' FNL  
1006' FWL  
LAT-40.15749°N  
LONG-104.71226°W  
PDOP:1.5  
ELEV: 4944'

⑮

REHDER 1  
(PLUGGED & ABANDONED)  
SW1/4SW1/4 (COGCC)  
990' FSL (COGCC)  
990' FWL (COGCC)  
LAT-40.162757°N (COGCC)  
LONG-104.712378°W (COGCC)  
PDOP:N/A  
ELEV: 4973' (COGCC)

⑮

REHDER X6-14  
(PLUGGED & ABANDONED)  
SE1/4SW1/4 (COGCC)  
654' FSL (COGCC)  
1970' FWL (COGCC)  
LAT-40.161897°N (COGCC)  
LONG-104.708868°W (COGCC)  
PDOP:N/A  
ELEV: 4952' (COGCC)

