

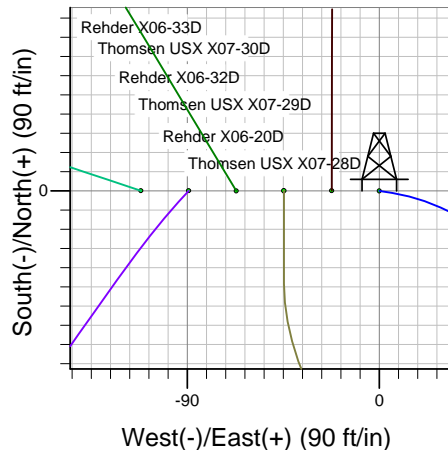
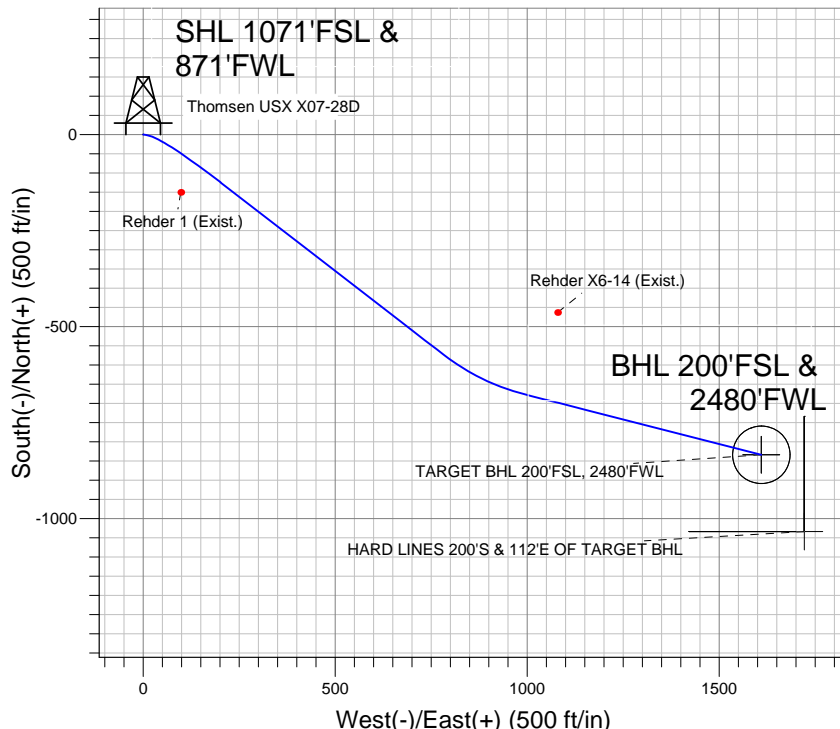
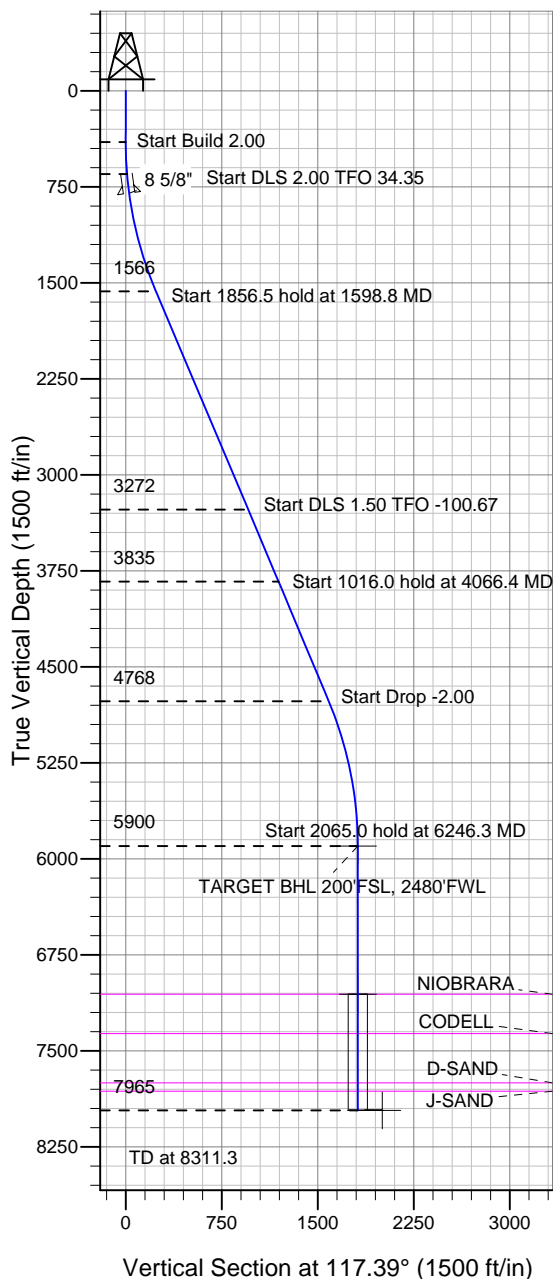
Well Name: Thomsen USX X07-28D

Surface Location: Rehder X06-33D Pad Sec.6-T2N-R65W
 North American Datum 1983 , US State Plane 1983 , Colorado Northern Zone
 Ground Elevation: 4976.0

| +N/-S | +E/-W | Northing | Easting | Latitude | Longitude | Slot |
|-------|-------|------------|------------|-----------|-------------|------|
| 0.0 | 0.0 | 1303262.65 | 3220025.92 | 40.163170 | -104.712730 | |

Original Well Elev WELL @ 4989.0ft (Original Well Elev)

NOBLE ENERGY INC WELD COUNTY CO



Rehder X06-33D Pad Sec.6-T2N-R65W
 Thomsen USX X07-28D
 Noble Thomsen USX X07-28D Plan #1 (2-13-12)
 10:32, February 16 2012



Azimuths to True North
 Magnetic North: 8.73°
 Magnetic Field
 Strength: 52941.1snT
 Dip Angle: 66.84°
 Date: 2/13/2012
 Model: IGRF2010

WELLBORE TARGET DETAILS (LAT/LONG)

| Name | TVD | +N/-S | +E/-W | Latitude | Longitude | Shape |
|--|--------|---------|--------|-----------|-------------|-----------------------|
| TARGET BHL 200'FSL, 2480'FWL | 5900.0 | -834.2 | 1609.9 | 40.160880 | -104.706970 | Point |
| TARGET CIRCLE 200'FSL & 2480'FWL | 7057.0 | -834.2 | 1609.9 | 40.160880 | -104.706970 | Circle (Radius: 75.0) |
| HARD LINES 200'S & 112'E OF TARGET BHL | 7965.0 | -1034.2 | 1721.9 | 40.160331 | -104.706570 | Polygon |

SECTION DETAILS

| Sec | MD | Inc | Azi | TVD | +N/-S | +E/-W | DLeg | TFace | VSec | Target |
|-----|--------|-------|--------|--------|--------|--------|------|---------|--------|------------------------------|
| 1 | 0.0 | 0.00 | 0.00 | 0.0 | 0.0 | 0.0 | 0.00 | 0.00 | 0.0 | |
| 2 | 400.0 | 0.00 | 0.00 | 400.0 | 0.0 | 0.0 | 0.00 | 0.00 | 0.0 | |
| 3 | 650.0 | 5.00 | 100.00 | 649.7 | -1.9 | 10.7 | 2.00 | 100.00 | 10.4 | |
| 4 | 1598.8 | 23.27 | 127.68 | 1566.5 | -124.7 | 201.5 | 2.00 | 34.35 | 236.3 | |
| 5 | 3455.3 | 23.27 | 127.68 | 3272.0 | -573.0 | 782.0 | 0.00 | 0.00 | 957.9 | |
| 6 | 4066.4 | 23.28 | 104.34 | 3834.5 | -676.9 | 995.0 | 1.50 | -100.67 | 1194.8 | |
| 7 | 5082.3 | 23.28 | 104.34 | 4767.8 | -776.4 | 1384.0 | 0.00 | 0.00 | 1586.0 | |
| 8 | 6246.3 | 0.00 | 0.00 | 5900.0 | -834.2 | 1609.9 | 2.00 | 180.00 | 1813.2 | TARGET BHL 200'FSL, 2480'FWL |
| 9 | 8311.3 | 0.00 | 0.00 | 7965.0 | -834.2 | 1609.9 | 0.00 | 0.00 | 1813.2 | |