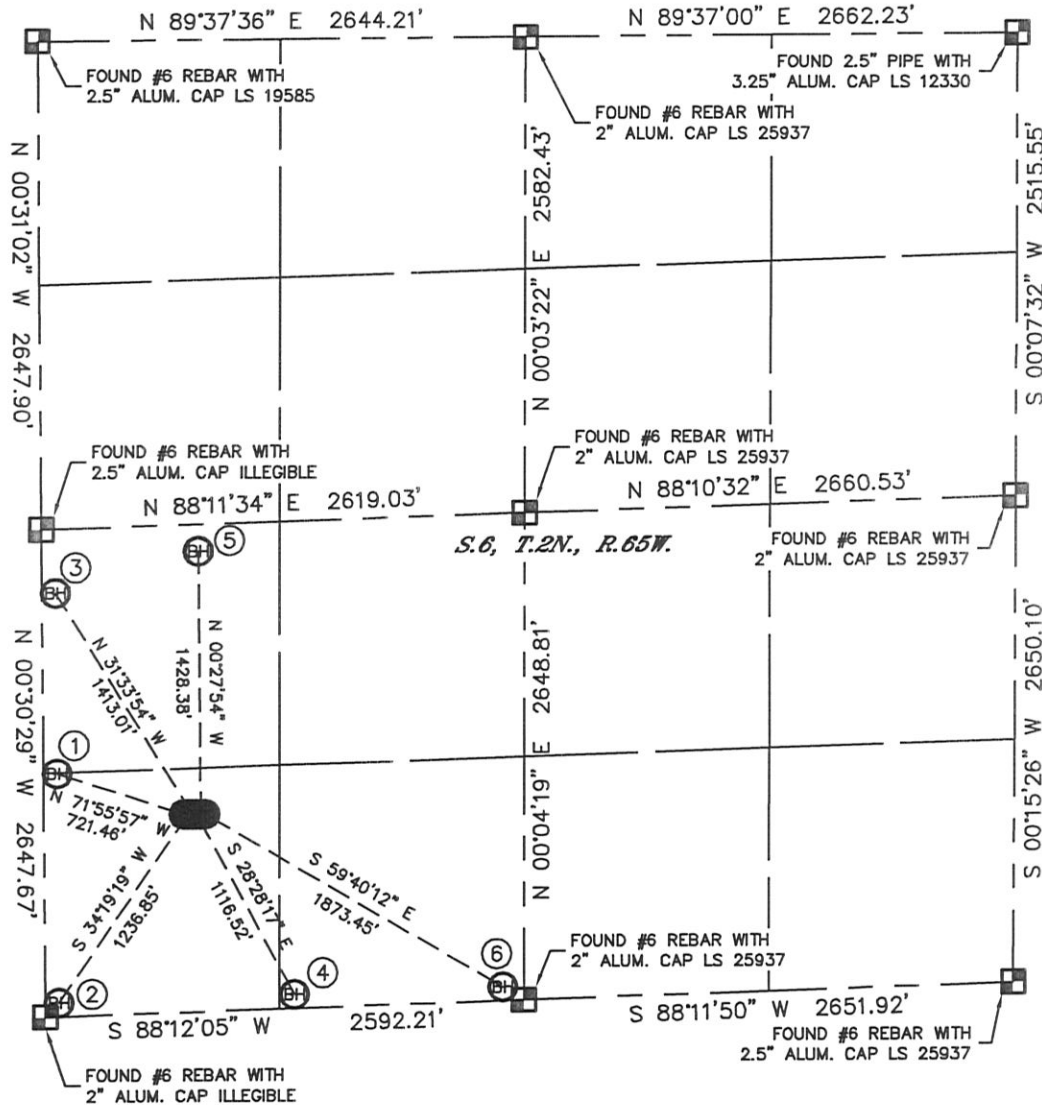


MULTI-WELL PLAN

REHDER X06-33D, 32D, 20D
THOMSEN USX X07-28D, 29D, 30D
THIS MAP DOES NOT REPRESENT A BOUNDARY SURVEY

SECTION: 6
TOWNSHIP: 2N
RANGE: 65W

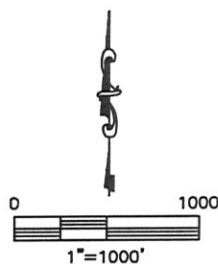


- | | | | | | |
|---|--|---|--|--|--|
| ① | ② | ③ | ④ | ⑤ | ⑥ |
| -BOTTOM HOLE-
REHDER X06-33D
1320' FSL
75' FWL
LAT-40.16380°N
LONG-104.71558°W | -BOTTOM HOLE-
THOMSEN USX X07-30D
75' FSL
75' FWL
LAT-40.16038°N
LONG-104.71558°W | -BOTTOM HOLE-
REHDER X06-32D
2300' FSL
75' FWL
LAT-40.16649°N
LONG-104.71558°W | -BOTTOM HOLE-
THOMSEN USX X07-29D
75' FSL
1350' FWL
LAT-40.16046°N
LONG-104.71102°W | -BOTTOM HOLE-
REHDER X06-20D
2500' FSL
850' FWL
LAT-40.16709°N
LONG-104.71280°W | -BOTTOM HOLE-
THOMSEN USX X07-28D
75' FSL
2480' FWL
LAT-40.16053°N
LONG-104.70697°W |

LEGEND

■ = ALIQUOT MONUMENT AS DESCRIBED

○ = CALCULATED POSITION

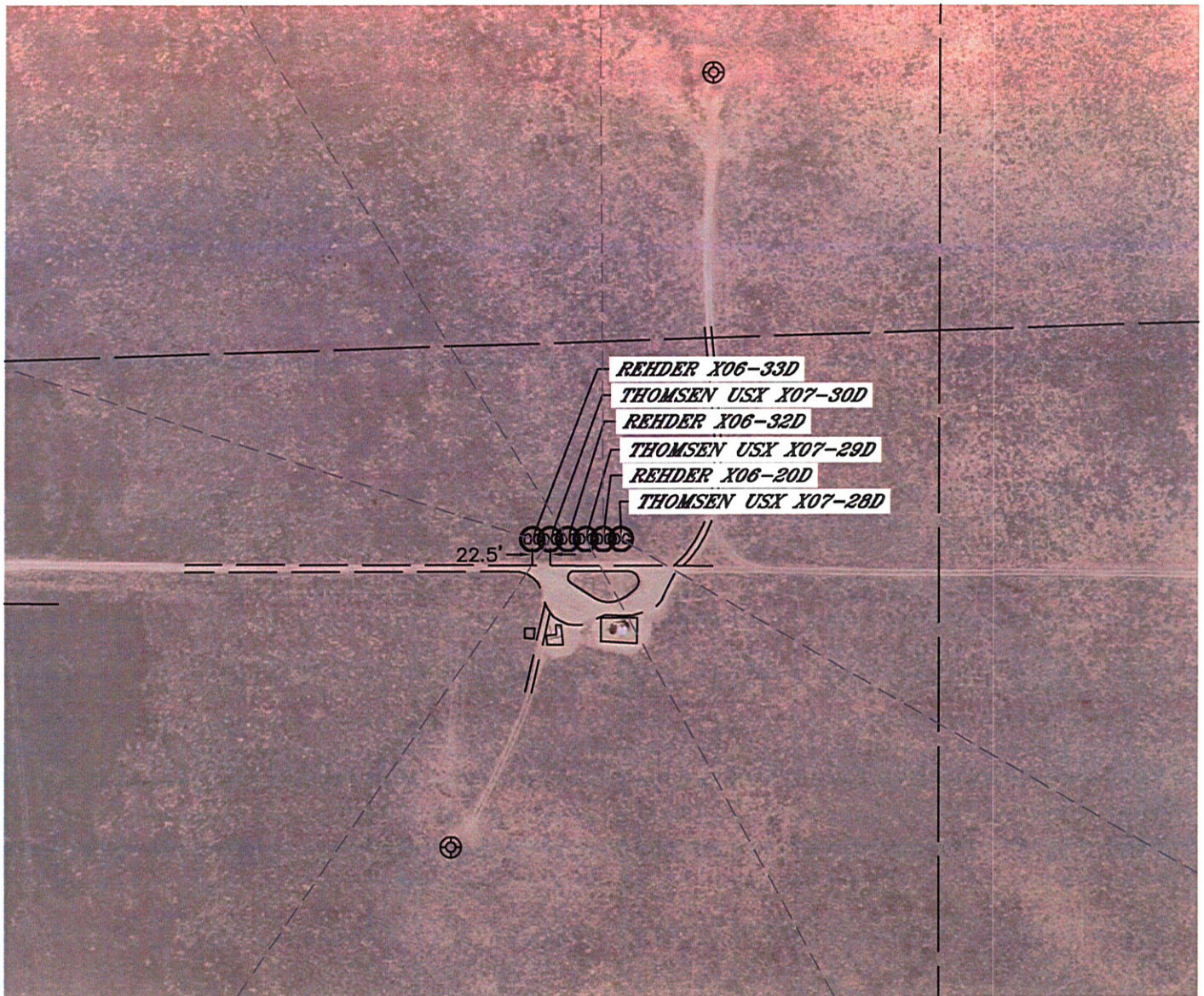


Lat40°, Inc. 1635 Foxtrail Drive, Suite 325 Loveland, CO 970-776-3321

MULTI-WELL PLAN

REHDER X06-33D, 32D, 20D
THOMSEN USX X07-28D, 29D, 30D

SECTION: 6
TOWNSHIP: 2N
RANGE: 65W



0 200
1"=200'

DATE: rev. 1/10/2012
PROJECT#: 2011343