

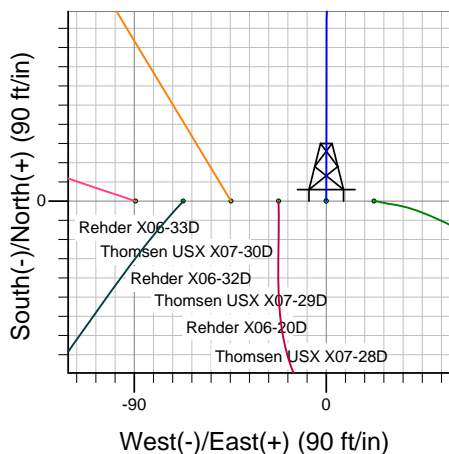
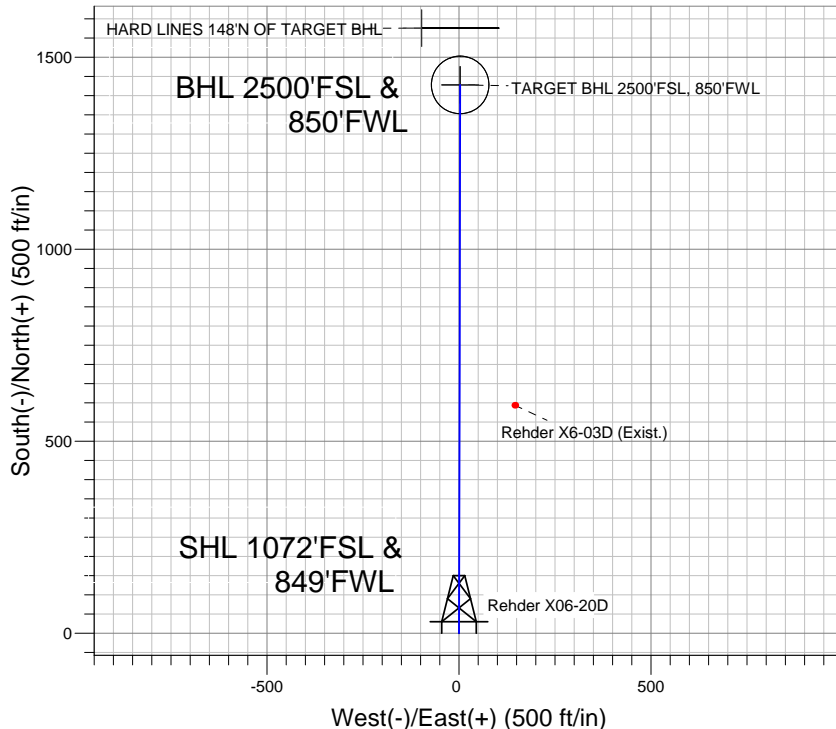
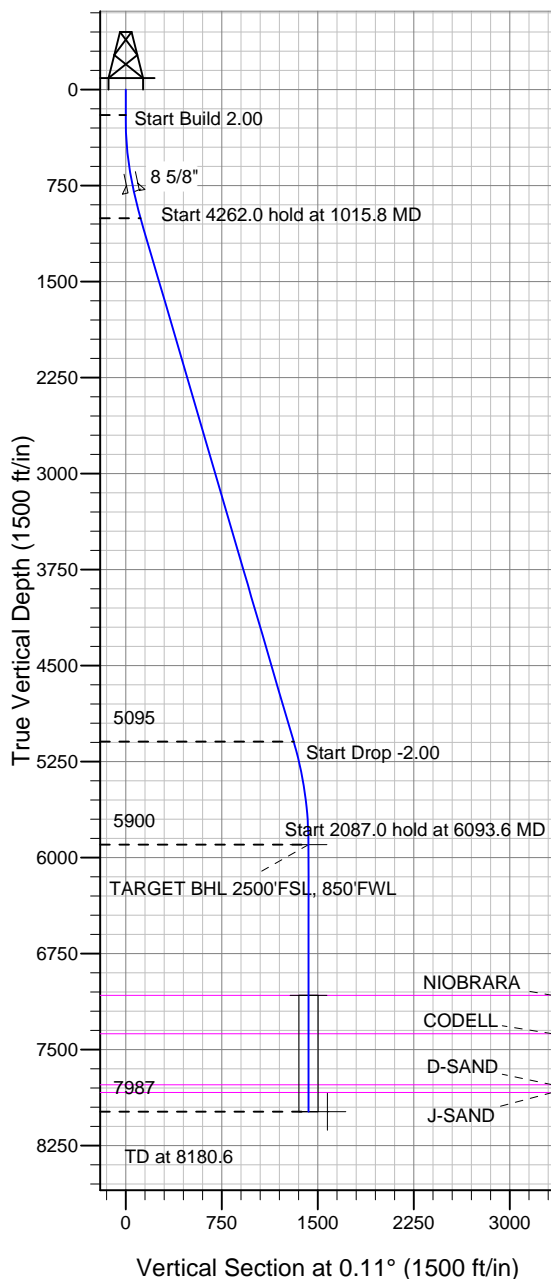
Well Name: Rehder X06-20D

Surface Location: Rehder X06-33D Pad Sec.6-T2N-R65W
North American Datum 1983 , US State Plane 1983 , Colorado Northern Zone
Ground Elevation: 4977.0

+N/-S	+E/-W	Northing	Easting	Latitude	Longitude	Slot
0.0	0.0	1303262.46	3220003.56	40.163170	-104.712810	

Original Well Elev WELL @ 4990.0ft (Original Well Elev)

NOBLE ENERGY INC WELD COUNTY CO



Rehder X06-33D Pad Sec.6-T2N-R65W
Rehder X06-20D
Noble Rehder X06-20D Plan #1 (2-13-12)
9:11, February 16 2012



Azimuths to True North
Magnetic North: 8.73°
Magnetic Field
Strength: 52941.1snT
Dip Angle: 66.84°
Date: 2/13/2012
Model: IGRF2010

WELLBORE TARGET DETAILS (LAT/LONG)

Name	TVD	+N/-S	+E/-W	Latitude	Longitude	Shape
TARGET BHL 2500'FSL, 850'FWL	5900.0	1428.1	2.8	40.167090	-104.712800	Point
TARGET CIRCLE 2500'FSL & 850'FWL	7077.0	1428.1	2.8	40.167090	-104.712800	Circle (Radius: 75.0)
HARD LINES 148'N OF TARGET BHL	7987.0	1576.1	-97.2	40.167496	-104.713158	Polygon

SECTION DETAILS

Sec	MD	Inc	Azi	TVD	+N/-S	+E/-W	DLeg	TFace	VSec	Target
1	0.0	0.00	0.00	0.0	0.0	0.0	0.00	0.00	0.0	
2	200.0	0.00	0.00	200.0	0.0	0.0	0.00	0.00	0.0	
3	1015.8	16.32	0.11	1004.8	115.4	0.2	2.00	0.11	115.4	
4	5277.8	16.32	0.11	5095.2	1312.7	2.6	0.00	0.00	1312.7	
5	6093.6	0.00	0.00	5900.0	1428.1	2.8	2.00	180.00	1428.1	TARGET BHL 2500'FSL, 850'FWL
6	8180.6	0.00	0.00	7987.0	1428.1	2.8	0.00	0.00	1428.1	