

2" = 100'

FEET MD

COMPANY : Carrizo Oil and Gas
 WELL : Rothe 12-14-8-61
 FIELD : DJ Basin -Wildcat
 COUNTY : Weld
 STATE : Colorado
 COUNTRY : USA
 UWI : 0512333946901

COMPANY : Carrizo Oil and Gas
 WELL : Rothe 12-14-8-61
 FIELD : DJ Basin -Wildcat
 COUNTY : Weld
 STATE : Colorado
 COUNTRY : USA
 UWI : 0512333946901

WELL LOCATION
 LAT:40°40'12.309"N LONG:104°9'42.606"W
 N:1489755.93 Ft E:3371193.88 Ft
 SEC:12 TWP:8N RANGE:61W

PRT
 ROD
 SURVEYS

DEPTH REF. : KB
 REF. HEIGHT : 17,000 Ft
 GROUND LEVEL : 4981.000 Ft
 G.I. to Mean Sea Level

KB to Ground Level

BOREHOLE RECORD

DEVIATION RECORD

HOLE SIZE in	FROM Ft	TO Ft	INCLINATION deg	FROM Ft	TO Ft
12.25	0	1425	0 - 6	0	5908
8.75	1425	6650	6 - 72	5908	6650
6.25	6650	10638	72 - 94	6650	10638
CASING RECORD					
CASING SIZE in	FROM Ft	TO Ft			
9.625	0	1425			
7	0	6640			

DRILLING CO. : Xtreme
 RIG : 19

LMD UNIT NO. : C-70 DISTRICT : Casper

SPUD DATE : 01/14/2012

LMD START DATE : 01/20/2012 DEPTH : 5869 Ft

LMD END DATE : 01/28/2012 DEPTH : 10638 Ft

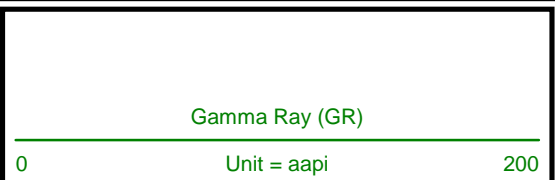
TOTAL DEPTH : 10638 Ft

Run Data

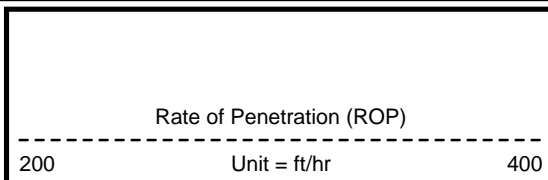
RUN NUMBER	2	3	4	5	6
START DATE	01/20/2012	01/21/2012	01/23/2012	01/24/2012	01/25/2012
START TIME	04:00	02:00	08:00	11:00	05:00
END DATE	01/21/2012	01/22/2012	01/24/2012	01/25/2012	01/28/2012
END TIME	00:30	09:00	02:00	01:00	
DEPTH IN (ft)	5908	6225	6650	6765	6842
DEPTH OUT (ft)	6225	6650	6765	6842	10638
LOG TOP (ft)	5869	6186	6609	6725	6802
LOG BOTTOM (ft)	6186	6609	6725	6802	10638
HOLE SIZE (in)	8.75	8.75	6.25	6.25	6.25
MUD DATA @ (ft)	5908	6650	6765	6842	10449
MUD TYPE	WATER BASED	WATER BASED	WATER BASED	WATER BASED	WATER BASED
DENSITY (lb / gal)	9.5	9.55	9.5	9.6	9.3
VISCOSITY (s / qt)	37	40	38	39	45
pH	9	9	9	9	9
FLUID LOSS (cm3 / 30)	-	-	-	-	-
SALINITY (ppm)	-	-	-	-	-
Rm (ohmm @ deg F)	-	-	-	-	-
Rmf (ohmm @ deg F)	-	-	-	-	-
MAX TEMP (deg F)	141	170	185	166	185
Rm @ MAX TEMP (ohmm)	-	-	-	-	-
LWD ENGINEER #1	M. SCHUSTER	M. SCHUSTER	M. SCHUSTER	M. SCHUSTER	M. SCHUSTER
LWD ENGINEER #2	K. EDWARDS	K. EDWARDS	K. EDWARDS	K. EDWARDS	K. EDWARDS
LWD ENGINEER #3	-	-	-	-	-

All interpretations are opinions based on inferences from electrical or other measurements and we cannot, and do not guarantee the accuracy or correctness of any interpretations, and we shall not, except in the case of gross or willful negligence on our part, be liable or responsible for any loss, costs, damages or expenses incurred or sustained by anyone resulting from any interpretation made by any of our officers, agents or employees. These interpretations are also subject to our general terms and conditions as set out in our current price schedule.

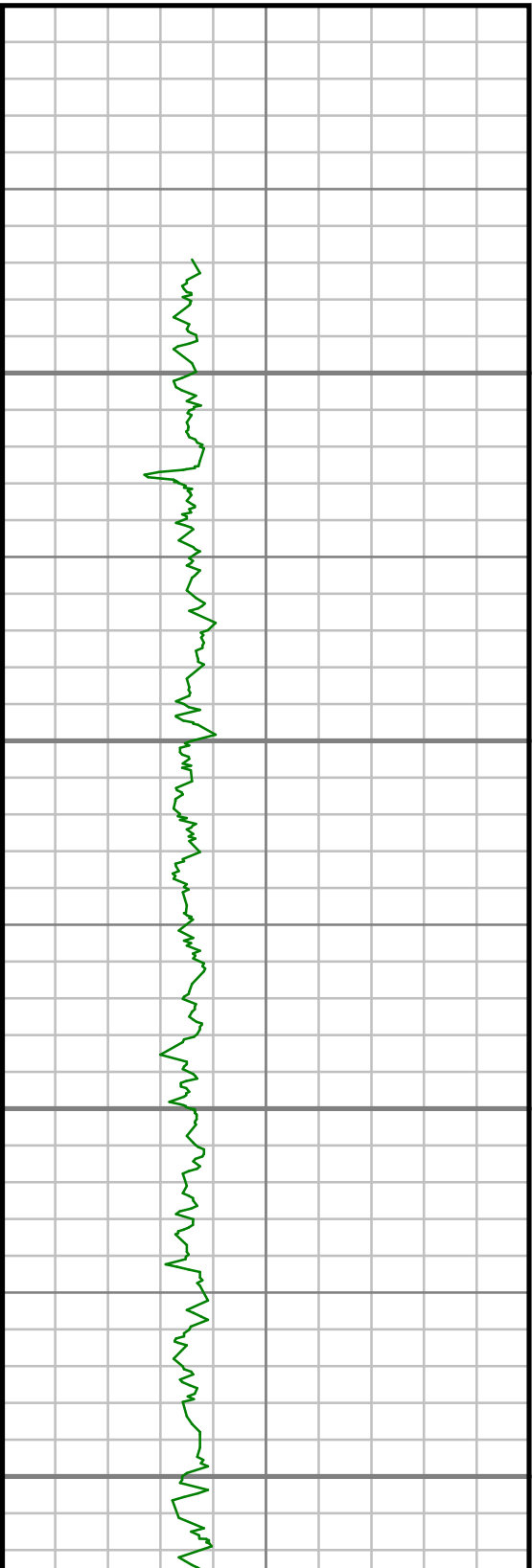
CARRIZO OIL AND GAS
 ROTHE 12-14-8-61
 WELD COUNTY
 COLORADO
 API 0512333946901



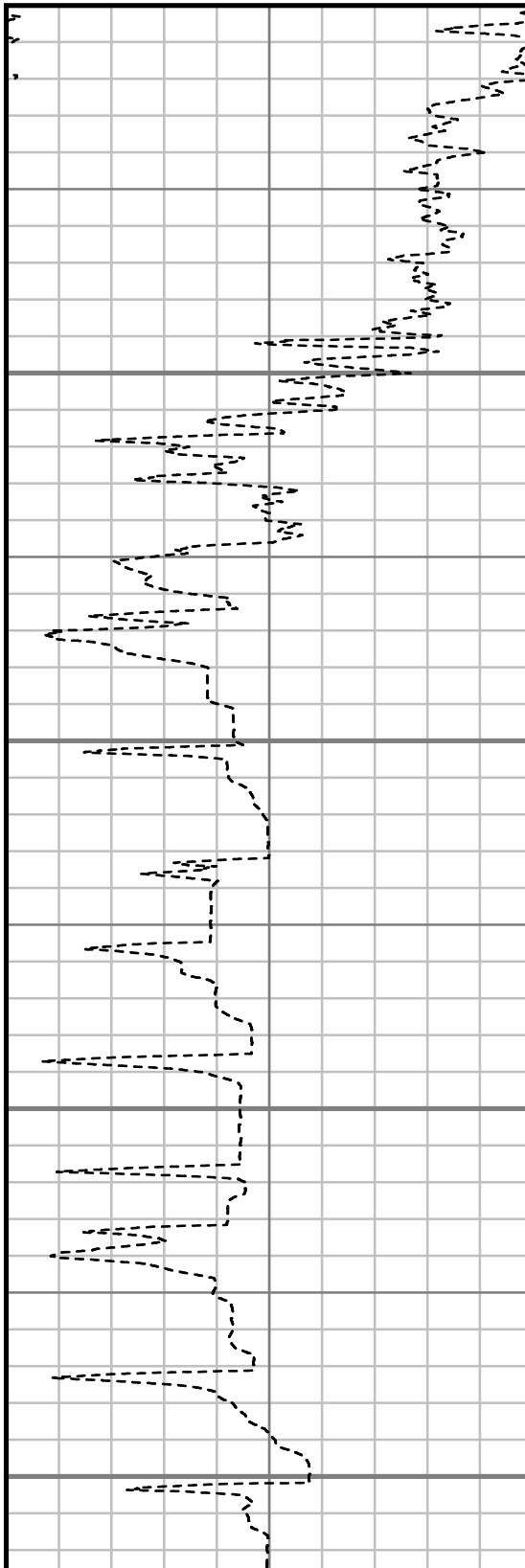
MEASURED DEPTH
 1:600 (ft)



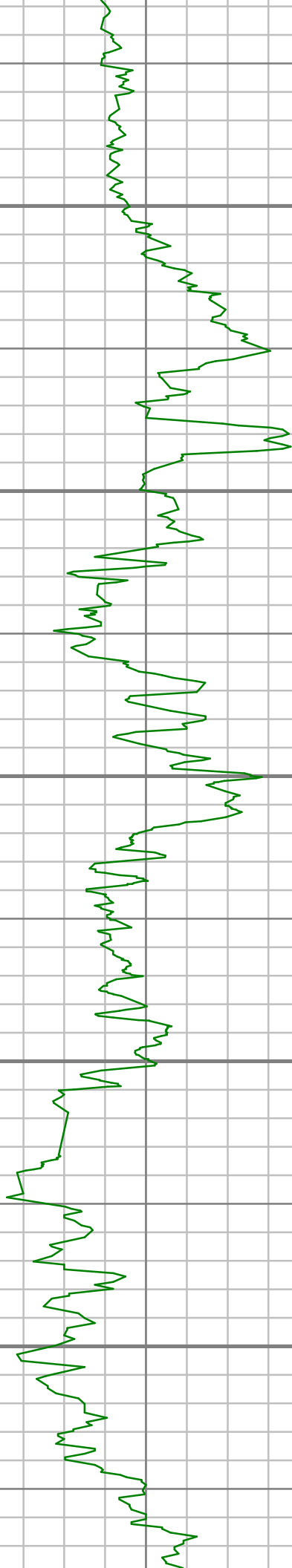
Comments



5900
 6000
 6100
 6200



- S: 91 MD: 5836.00 ft Inc: 4.22 deg Az: 79.93 deg TVD: 5820.41 ft VS: 45.19 ft
- S: 92 MD: 5866.00 ft Inc: 3.96 deg Az: 79.93 deg TVD: 5850.34 ft VS: 45.77 ft
- S: 93 MD: 5896.00 ft Inc: 4.13 deg Az: 77.30 deg TVD: 5880.26 ft VS: 46.38 ft
- S: 94 MD: 5921.00 ft Inc: 4.48 deg Az: 57.96 deg TVD: 5905.19 ft VS: 47.26 ft
- S: 95 MD: 5951.00 ft Inc: 6.07 deg Az: 44.07 deg TVD: 5935.07 ft VS: 49.22 ft
- S: 96 MD: 5981.00 ft Inc: 8.18 deg Az: 26.76 deg TVD: 5964.84 ft VS: 52.45 ft
- S: 97 MD: 6005.00 ft Inc: 10.29 deg Az: 23.07 deg TVD: 5988.53 ft VS: 56.08 ft
- S: 98 MD: 6035.00 ft Inc: 12.13 deg Az: 20.70 deg TVD: 6017.95 ft VS: 61.68 ft
- S: 99 MD: 6065.00 ft Inc: 14.51 deg Az: 18.23 deg TVD: 6047.14 ft VS: 68.39 ft
- S: 100 MD: 6091.00 ft Inc: 15.92 deg Az: 16.30 deg TVD: 6072.23 ft VS: 75.08 ft
- S: 101 MD: 6121.00 ft Inc: 18.82 deg Az: 15.95 deg TVD: 6100.86 ft VS: 83.88 ft
- S: 102 MD: 6151.00 ft Inc: 21.19 deg Az: 13.31 deg TVD: 6129.05 ft VS: 94.01 ft
- S: 103 MD: 6175.00 ft Inc: 23.21 deg Az: 11.91 deg TVD: 6151.27 ft VS: 103.01 ft
- S: 104 MD: 6205.00 ft Inc: 26.38 deg Az: 11.91 deg TVD: 6178.50 ft VS: 115.52 ft



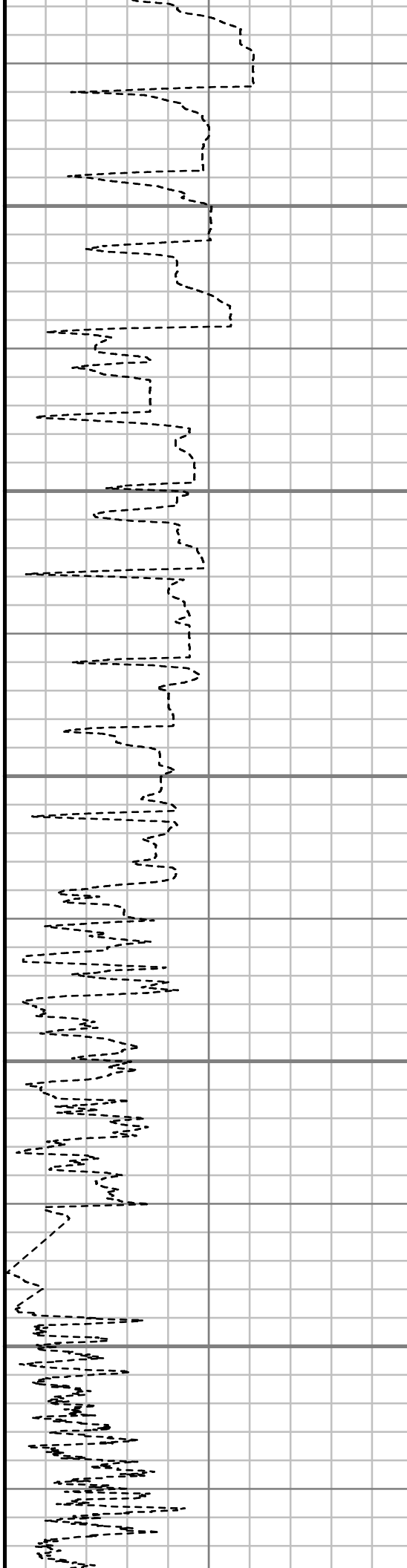
6300

6400

6500

6600

6700



S: 105 MD: 6235.00 ft Inc:
29.99 deg Az: 12.43 deg TVD:
6204.94 ft VS: 129.59 ft

S: 106 MD: 6260.00 ft Inc:
32.36 deg Az: 14.19 deg TVD:
6226.33 ft VS: 142.41 ft

S: 107 MD: 6290.00 ft Inc:
35.88 deg Az: 19.03 deg TVD:
6251.16 ft VS: 158.90 ft

S: 108 MD: 6320.00 ft Inc:
38.95 deg Az: 18.94 deg TVD:
6274.99 ft VS: 176.63 ft

S: 109 MD: 6345.00 ft Inc:
40.63 deg Az: 21.75 deg TVD:
6294.20 ft VS: 192.09 ft

S: 110 MD: 6375.00 ft Inc:
44.32 deg Az: 20.78 deg TVD:
6316.32 ft VS: 211.59 ft

S: 111 MD: 6405.00 ft Inc:
47.57 deg Az: 18.94 deg TVD:
6337.18 ft VS: 232.48 ft

S: 112 MD: 6430.00 ft Inc:
50.39 deg Az: 16.74 deg TVD:
6353.59 ft VS: 250.91 ft

S: 113 MD: 6460.00 ft Inc:
54.61 deg Az: 16.04 deg TVD:
6371.85 ft VS: 274.28 ft

S: 114 MD: 6490.00 ft Inc:
58.39 deg Az: 13.58 deg TVD:
6388.41 ft VS: 298.96 ft

S: 115 MD: 6516.00 ft Inc:
61.38 deg Az: 12.43 deg TVD:
6401.45 ft VS: 321.26 ft

S: 116 MD: 6546.00 ft Inc:
64.37 deg Az: 11.29 deg TVD:
6415.13 ft VS: 347.80 ft

S: 117 MD: 6576.00 ft Inc:
66.65 deg Az: 10.76 deg TVD:
6427.57 ft VS: 374.97 ft

S: 118 MD: 6597.00 ft Inc:
68.32 deg Az: 8.83 deg TVD:
6435.61 ft VS: 394.32 ft

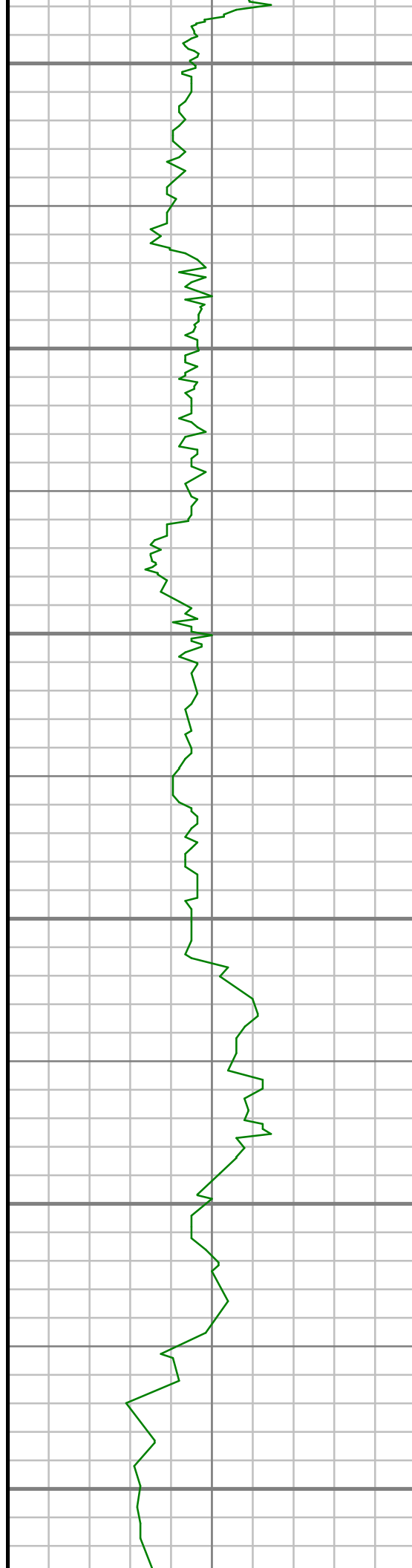
S: 119 MD: 6668.00 ft Inc:
73.16 deg Az: 5.93 deg TVD:
6459.02 ft VS: 461.28 ft

S: 120 MD: 6683.00 ft Inc:
73.25 deg Az: 4.96 deg TVD:
6463.36 ft VS: 475.64 ft

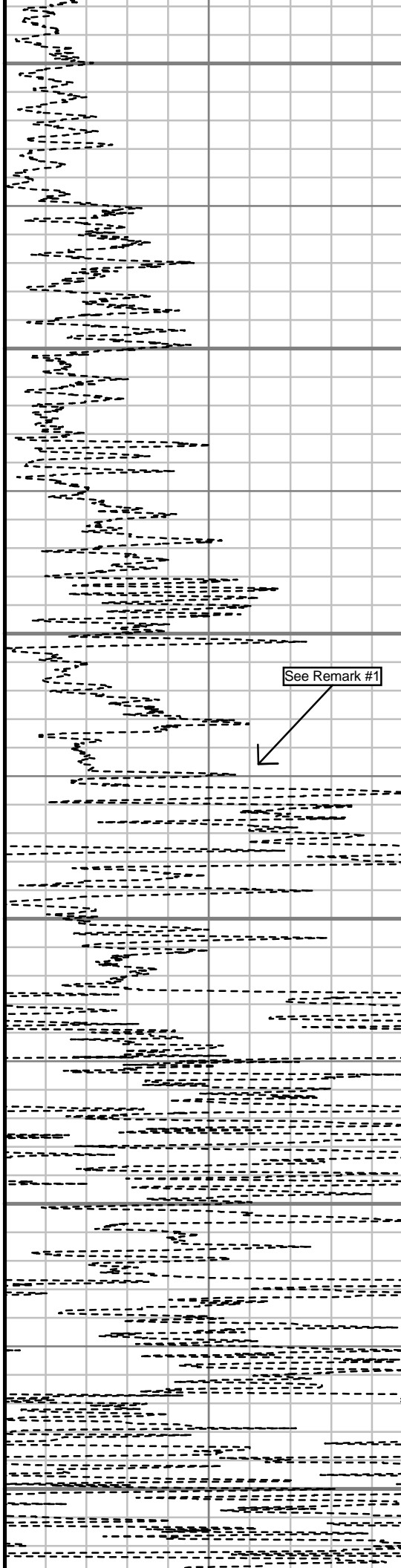
S: 121 MD: 6698.00 ft Inc:
73.42 deg Az: 5.05 deg TVD:
6467.66 ft VS: 490.01 ft

S: 122 MD: 6728.00 ft Inc:
74.92 deg Az: 3.12 deg TVD:
6475.84 ft VS: 518.86 ft

S: 123 MD: 6760.00 ft Inc:
77.12 deg Az: 2.24 deg TVD:
6483.57 ft VS: 549.87 ft

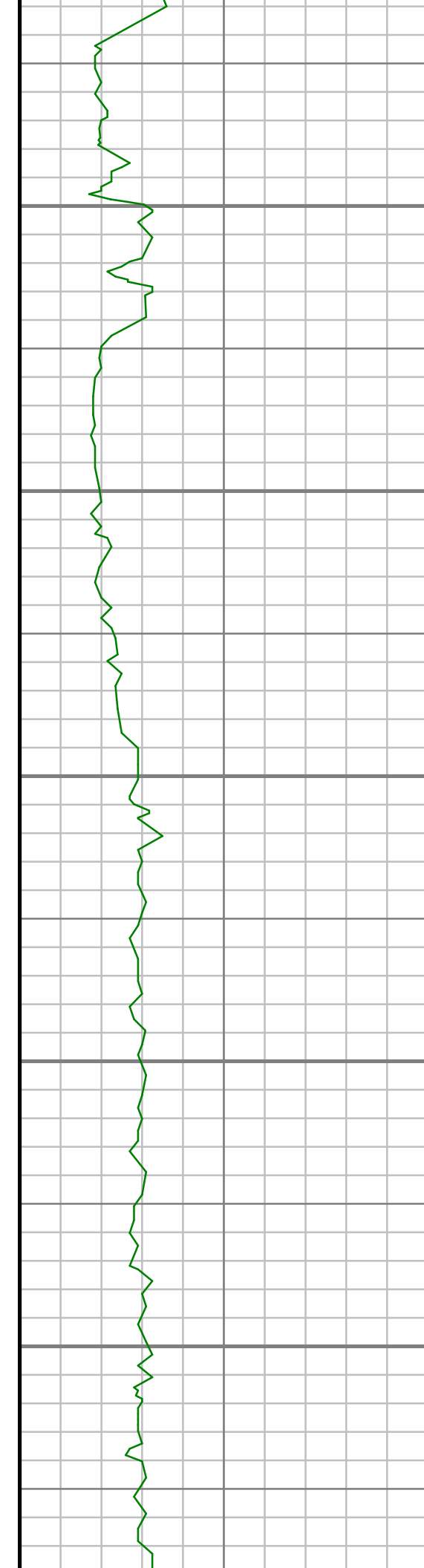


6800
6900
7000
7100
7200
7300



See Remark #1

S: 124 MD: 6773.00 ft Inc:
79.58 deg Az: 1.36 deg TVD:
6486.60 ft VS: 564.53 ft Inc:
S: 125 MD: 6790.00 ft Inc:
81.51 deg Az: 1.10 deg TVD:
6489.06 ft VS: 579.29 ft Inc:
S: 126 MD: 6805.00 ft Inc:
83.90 deg Az: 1.68 deg TVD:
6491.97 MD: 6820.00 ft Inc:
86.53 deg Az: 1.80 deg TVD:
6492.22 ft VS: 609.04 ft Inc:
S: 128 MD: 6833.00 ft Inc:
88.29 deg Az: 0.83 deg TVD:
6492.90 ft VS: 623.98 ft Inc:
S: 129 MD: 6852.00 ft Inc:
88.02 deg Az: 359.87 deg TVD:
6493.44 ft VS: 640.90 ft Inc:
S: 130 MD: 6887.00 ft Inc:
89.43 deg Az: 359.69 deg TVD:
6493.76 ft VS: 655.82 ft Inc:
S: 131 MD: 6882.00 ft Inc:
90.13 deg Az: 359.16 deg TVD:
6493.84 ft VS: 670.73 ft Inc:
S: 132 MD: 6897.00 ft Inc:
90.40 deg Az: 359.69 deg TVD:
6493.77 MD: 6915.65 ft Inc:
S: 133 MD: 6912.00 ft Inc:
90.48 deg Az: 358.46 deg TVD:
6493.65 ft VS: 700.55 ft Inc:
S: 134 MD: 6927.00 ft Inc:
90.13 deg Az: 358.72 deg TVD:
6493.57 MD: 6934.04 ft Inc:
89.69 deg Az: 359.16 deg TVD:
6493.89 MD: 6953.00 ft Inc:
90.66 deg Az: 358.55 deg TVD:
6493.54 ft VS: 741.26 ft Inc:
S: 137 MD: 6968.00 ft Inc:
91.98 deg Az: 358.55 deg TVD:
6493.20 ft VS: 756.15 ft Inc:
S: 138 MD: 6983.00 ft Inc:
92.51 deg Az: 358.55 deg TVD:
6493.61 ft VS: 771.02 ft Inc:
S: 139 MD: 6998.00 ft Inc:
92.58 deg Az: 358.62 deg TVD:
6491.94 ft VS: 785.90 ft Inc:
S: 140 MD: 7023.00 ft Inc:
91.45 deg Az: 358.72 deg TVD:
6491.06 ft VS: 810.70 ft Inc:
S: 141 MD: 7038.00 ft Inc:
91.10 deg Az: 358.99 deg TVD:
6491.23 MD: 7053.69 ft Inc:
91.63 deg Az: 359.16 deg TVD:
6490.37 ft VS: 840.49 ft Inc:
S: 143 MD: 7088.00 ft Inc:
91.80 deg Az: 358.11 deg TVD:
6489.92 ft VS: 855.38 ft Inc:
S: 144 MD: 7083.00 ft Inc:
92.24 deg Az: 359.25 deg TVD:
6489.40 ft VS: 870.26 ft Inc:
S: 145 MD: 7108.00 ft Inc:
94.97 deg Az: 359.69 deg TVD:
6487.82 ft VS: 895.07 ft Inc:
S: 146 MD: 7138.00 ft Inc:
95.50 deg Az: 359.78 deg TVD:
6485.09 ft VS: 924.79 ft Inc:
S: 147 MD: 7168.00 ft Inc:
95.32 deg Az: 359.16 deg TVD:
6482.26 ft VS: 954.49 ft Inc:
S: 148 MD: 7192.00 ft Inc:
94.97 deg Az: 359.16 deg TVD:
6480.11 ft VS: 978.24 ft Inc:
S: 149 MD: 7222.00 ft Inc:
93.21 deg Az: 359.51 deg TVD:
6477.97 ft VS: 1007.99 ft Inc:
S: 150 MD: 7252.00 ft Inc:
93.03 deg Az: 359.34 deg TVD:
6476.34 ft VS: 1037.77 ft Inc:
S: 151 MD: 7277.00 ft Inc:
92.95 deg Az: 359.25 deg TVD:
6475.03 ft VS: 1062.59 ft Inc:
S: 152 MD: 7307.00 ft Inc:
92.24 deg Az: 358.72 deg TVD:
6473.67 ft VS: 1092.36 ft Inc:



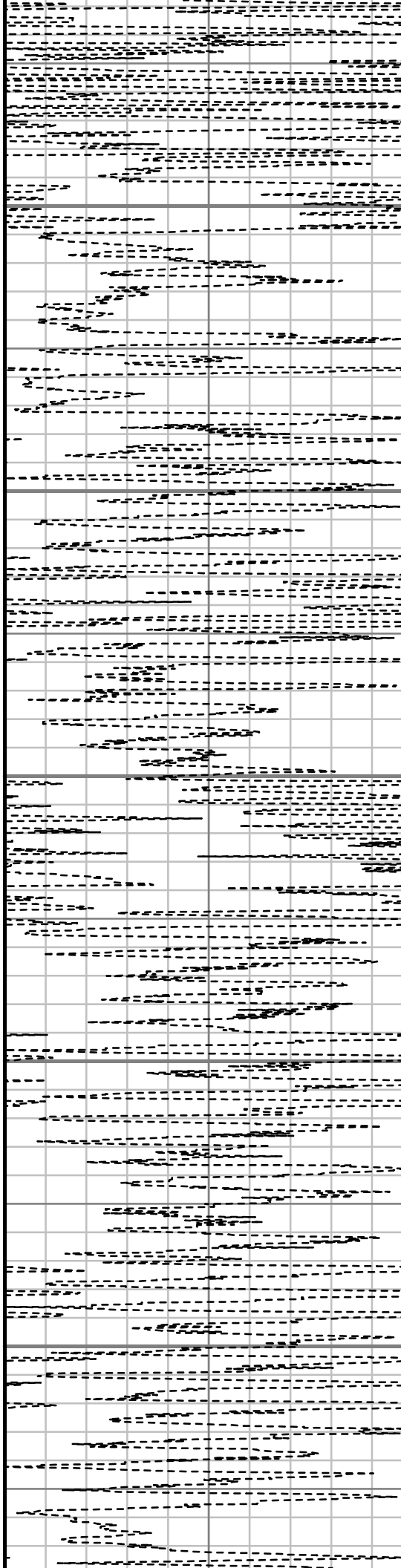
7400

7500

7600

7700

7800



S: 153 MD: 7337.00 ft Inc:
91.63 deg Az: 358.46 deg TVD:
6472.66 ft VS: 1122.12 ft

S: 154 MD: 7362.00 ft Inc:
91.36 deg Az: 358.11 deg TVD:
6472.01 ft VS: 1146.91 ft

S: 155 MD: 7392.00 ft Inc:
89.69 deg Az: 358.28 deg TVD:
6471.73 ft VS: 1176.66 ft

S: 156 MD: 7422.00 ft Inc:
90.31 deg Az: 359.51 deg TVD:
6471.73 ft VS: 1206.46 ft

S: 157 MD: 7447.00 ft Inc:
91.11 deg Az: 0.58 deg TVD:
6471.42 ft VS: 1231.34 ft

S: 158 MD: 7489.00 ft Inc:
91.54 deg Az: 1.71 deg TVD:
6470.45 ft VS: 1273.20 ft

S: 159 MD: 7532.00 ft Inc:
91.10 deg Az: 1.53 deg TVD:
6469.46 ft VS: 1316.09 ft

S: 160 MD: 7574.00 ft Inc:
91.36 deg Az: 0.83 deg TVD:
6468.56 ft VS: 1357.96 ft

S: 161 MD: 7617.00 ft Inc:
91.28 deg Az: 1.27 deg TVD:
6467.57 ft VS: 1400.81 ft

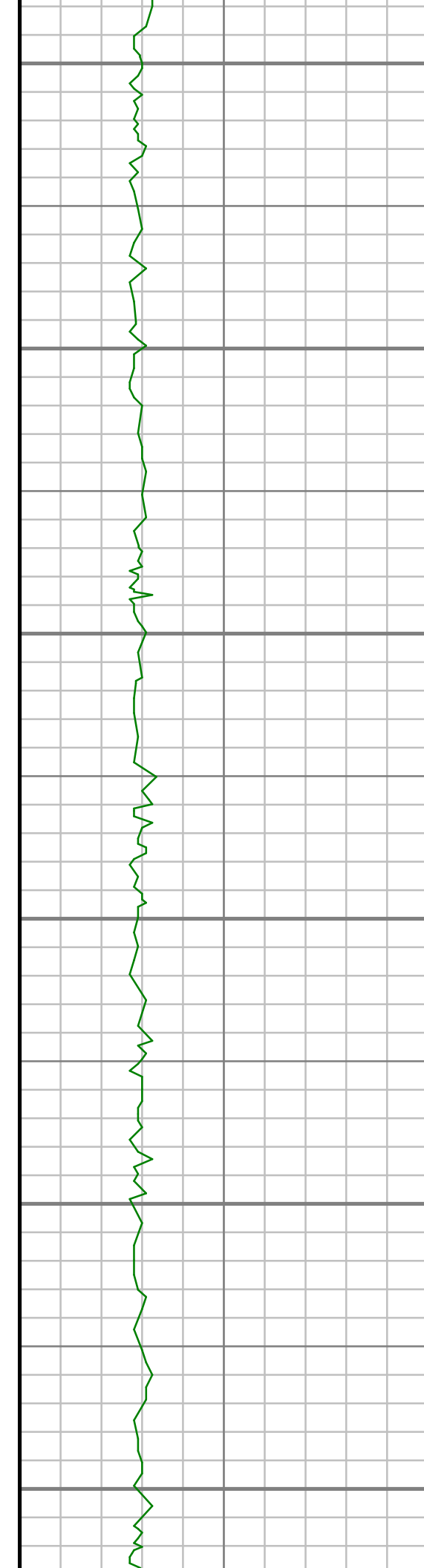
S: 162 MD: 7660.00 ft Inc:
89.60 deg Az: 359.95 deg TVD:
6467.24 ft VS: 1443.65 ft

S: 163 MD: 7702.00 ft Inc:
90.31 deg Az: 2.77 deg TVD:
6467.27 ft VS: 1485.53 ft

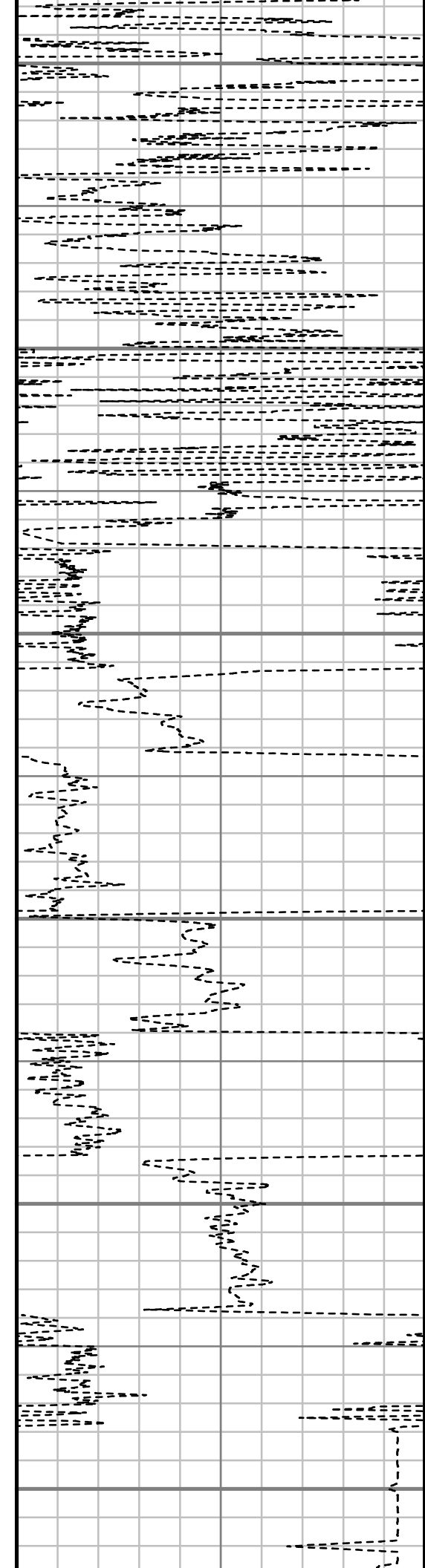
S: 164 MD: 7745.00 ft Inc:
90.13 deg Az: 3.47 deg TVD:
6467.11 ft VS: 1528.49 ft

S: 165 MD: 7787.00 ft Inc:
90.40 deg Az: 5.67 deg TVD:
6466.92 ft VS: 1570.48 ft

S: 166 MD: 7873.00 ft Inc:



7900
8000
8100
8200
8300
8400



90.48 deg Az: 8.74 deg TVD:
6466.26 ft VS: 1656.43 ft

S: 167 MD: 7958.00 ft Inc:
90.31 deg Az: 7.34 deg TVD:
6465.67 ft VS: 1741.35 ft

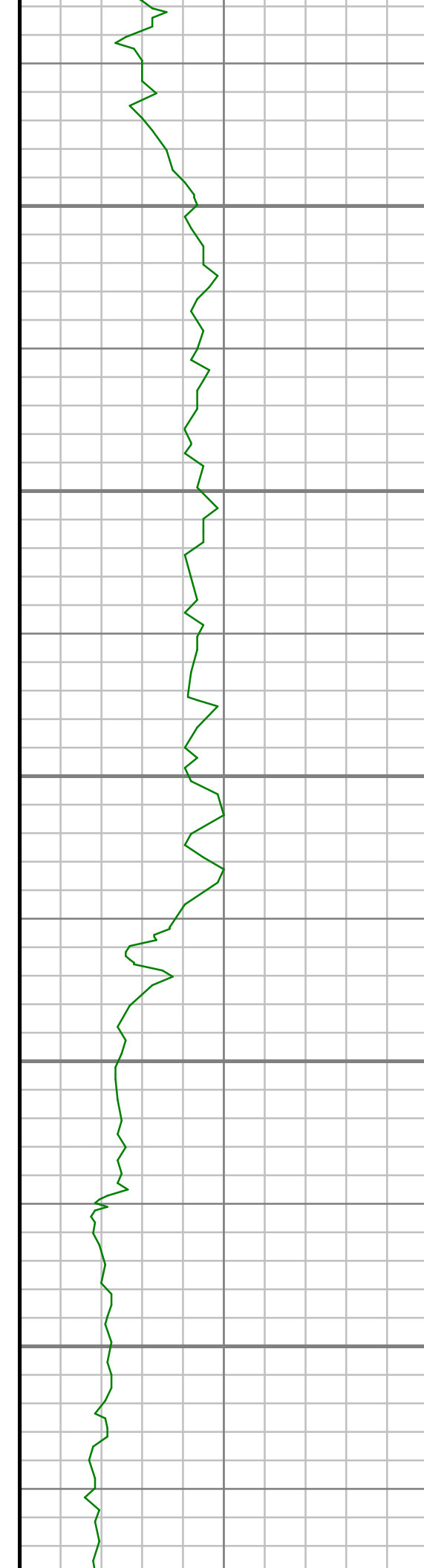
S: 168 MD: 8043.00 ft Inc:
90.22 deg Az: 5.40 deg TVD:
6465.28 ft VS: 1826.34 ft

S: 169 MD: 8129.00 ft Inc:
90.22 deg Az: 4.79 deg TVD:
6464.95 ft VS: 1912.33 ft

S: 170 MD: 8214.00 ft Inc:
90.31 deg Az: 3.29 deg TVD:
6464.56 ft VS: 1997.30 ft

S: 171 MD: 8299.00 ft Inc:
90.31 deg Az: 358.55 deg TVD:
6464.10 ft VS: 2082.00 ft

S: 172 MD: 8384.00 ft Inc:
89.52 deg Az: 356.44 deg TVD:
6464.23 ft VS: 2166.15 ft



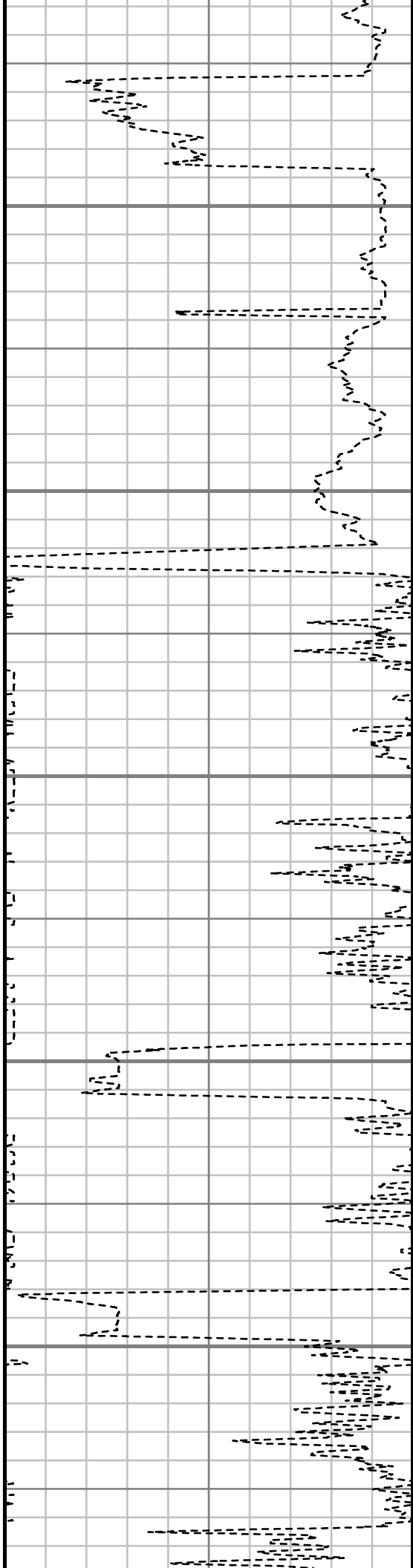
8500

8600

8700

8800

8900



S: 173 MD: 8469.00 ft Inc:
90.84 deg Az: 357.93 deg TVD:
6463.97 ft VS: 2250.24 ft

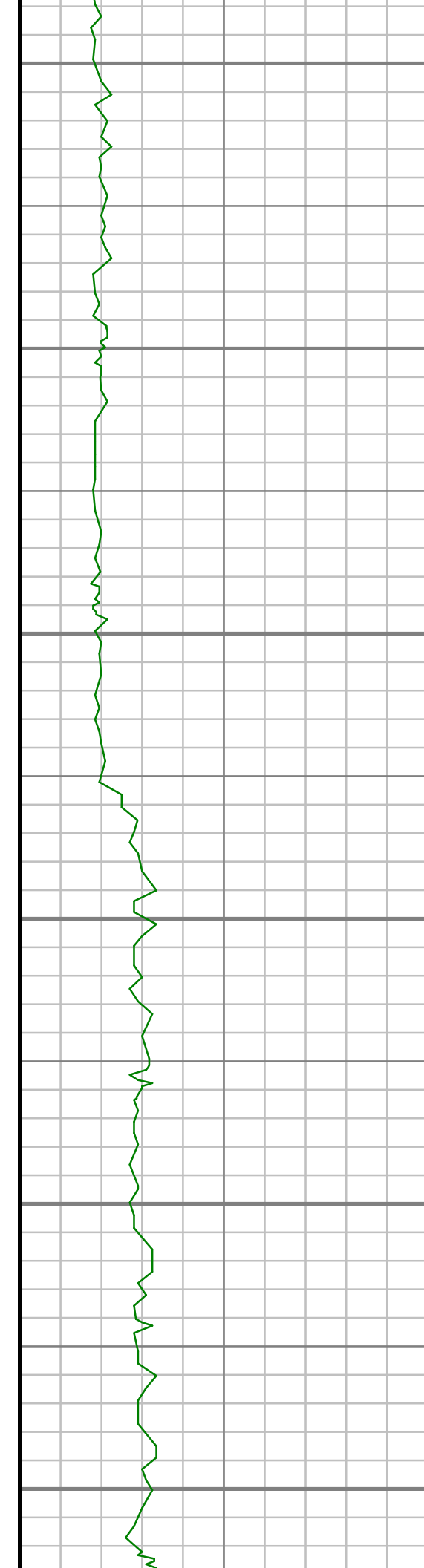
S: 174 MD: 8555.00 ft Inc:
89.69 deg Az: 356.88 deg TVD:
6463.57 ft VS: 2335.36 ft

S: 175 MD: 8640.00 ft Inc:
88.90 deg Az: 355.65 deg TVD:
6464.62 ft VS: 2419.24 ft

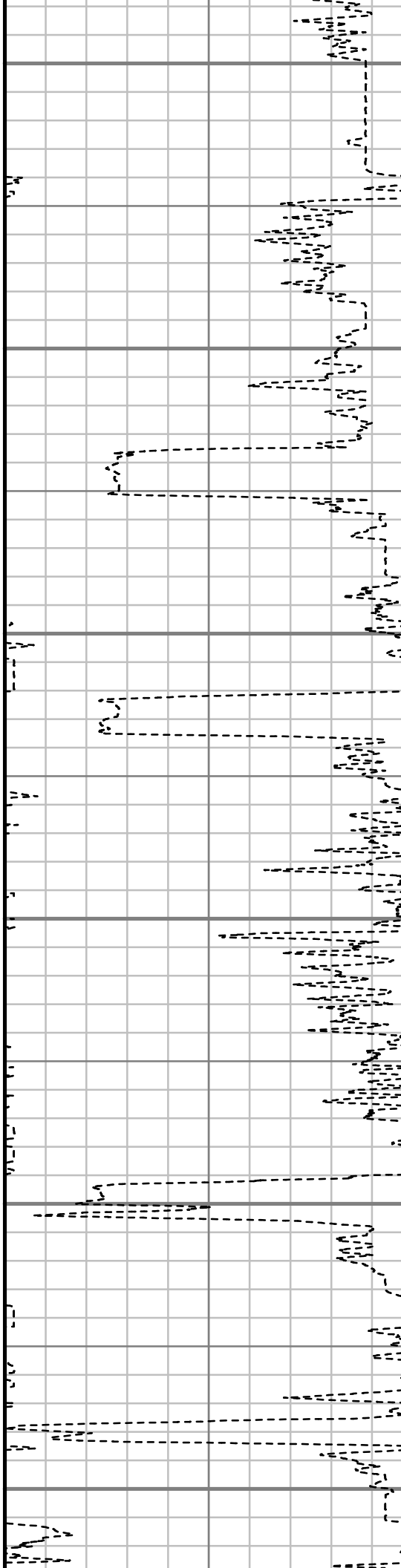
S: 176 MD: 8725.00 ft Inc:
87.41 deg Az: 353.98 deg TVD:
6467.36 ft VS: 2502.70 ft

S: 177 MD: 8810.00 ft Inc:
89.78 deg Az: 354.50 deg TVD:
6469.44 ft VS: 2586.01 ft

S: 178 MD: 8896.00 ft Inc:
89.96 deg Az: 355.73 deg TVD:
6469.64 ft VS: 2670.59 ft



9000
9100
9200
9300
9400
9500



S: 179 MD: 8981.00 ft Inc:
90.13 deg Az: 356.00 deg TVD:
6469.58 ft VS: 2754.37 ft

S: 180 MD: 9066.00 ft Inc:
89.52 deg Az: 355.12 deg TVD:
6469.84 ft VS: 2838.08 ft

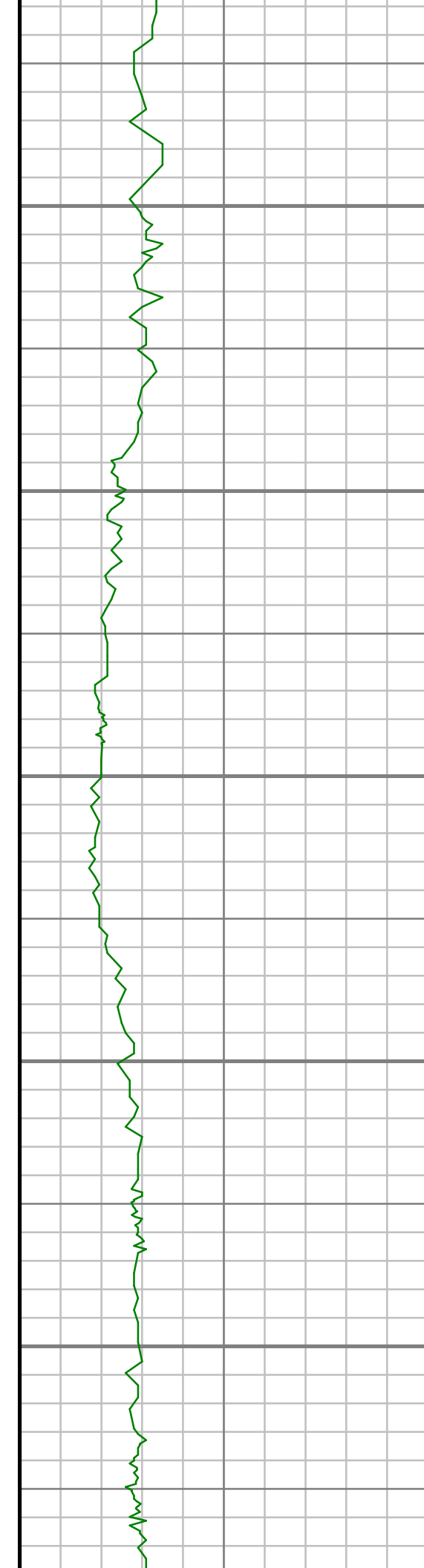
S: 181 MD: 9151.00 ft Inc:
89.52 deg Az: 357.05 deg TVD:
6470.55 ft VS: 2921.91 ft

S: 182 MD: 9236.00 ft Inc:
90.57 deg Az: 358.81 deg TVD:
6470.49 ft VS: 3006.16 ft

S: 183 MD: 9321.00 ft Inc:
89.87 deg Az: 356.61 deg TVD:
6470.16 ft VS: 3090.36 ft

S: 184 MD: 9406.00 ft Inc:
89.78 deg Az: 355.91 deg TVD:
6470.42 ft VS: 3174.24 ft

S: 185 MD: 9490.00 ft Inc:
91.45 deg Az: 357.84 deg TVD:
6469.52 ft VS: 3257.26 ft



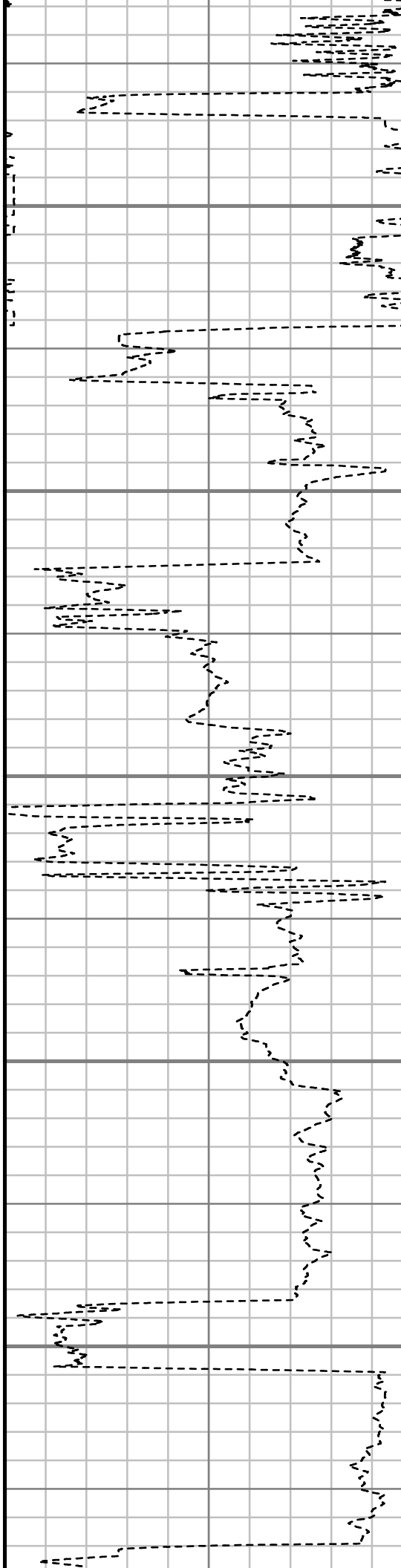
9600

9700

9800

9900

10000



S: 186 MD: 9574.00 ft Inc:
88.90 deg Az: 356.26 deg TVD:
6469.26 ft VS: 3340.33 ft

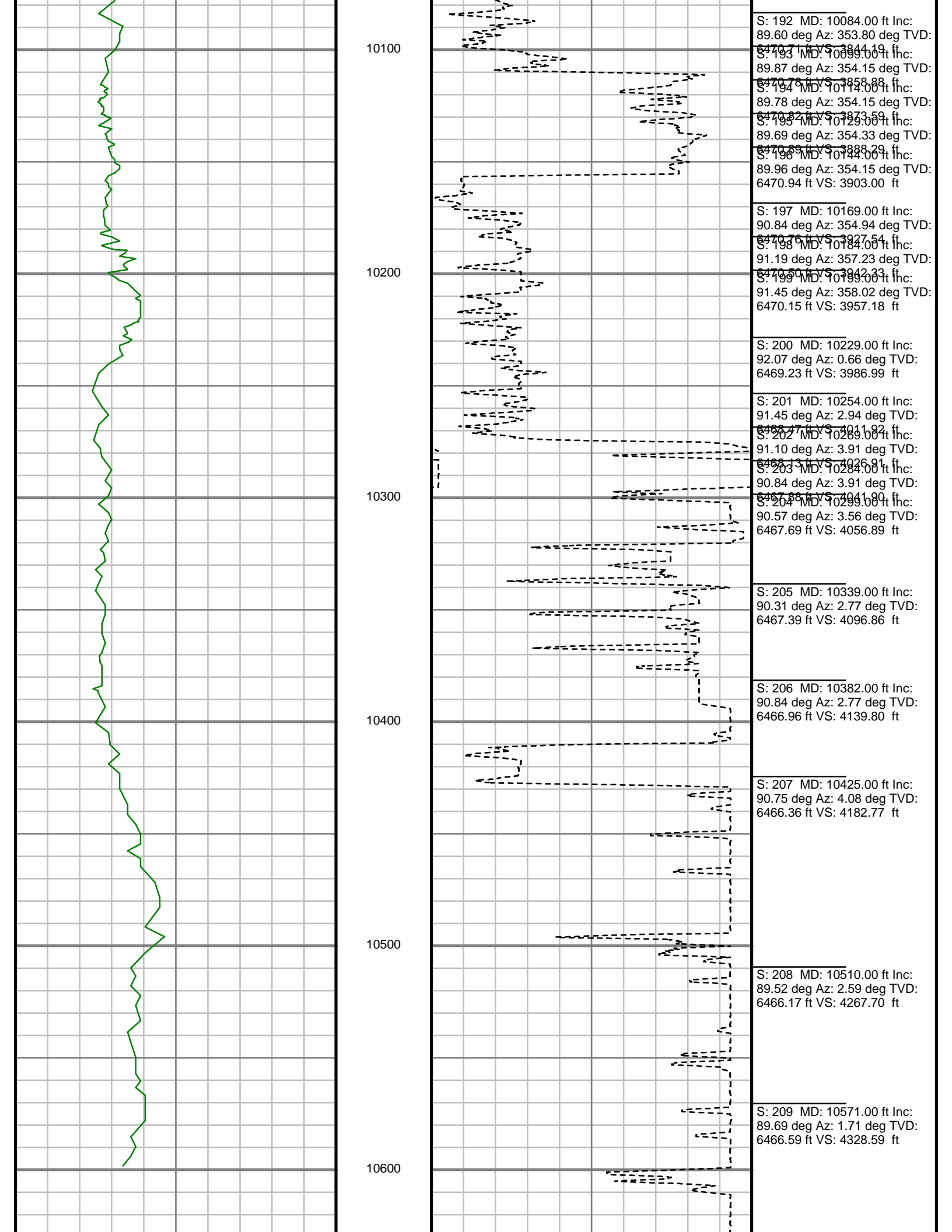
S: 187 MD: 9660.00 ft Inc:
89.34 deg Az: 357.84 deg TVD:
6470.58 ft VS: 3425.37 ft

S: 188 MD: 9744.00 ft Inc:
89.87 deg Az: 356.79 deg TVD:
6471.16 ft VS: 3508.50 ft

S: 189 MD: 9829.00 ft Inc:
90.84 deg Az: 357.40 deg TVD:
6470.64 ft VS: 3592.57 ft

S: 190 MD: 9914.00 ft Inc:
90.22 deg Az: 356.79 deg TVD:
6469.86 ft VS: 3676.64 ft

S: 191 MD: 9999.00 ft Inc:
89.52 deg Az: 356.44 deg TVD:
6470.05 ft VS: 3760.60 ft



Gamma Ray (GR)		
0	Unit = aapi	200

MEASURED DEPTH
1:500 (ft)

Rate of Penetration (ROP)		
0	Unit = ft/hr	200

Comments



2" = 100'

FEET MD