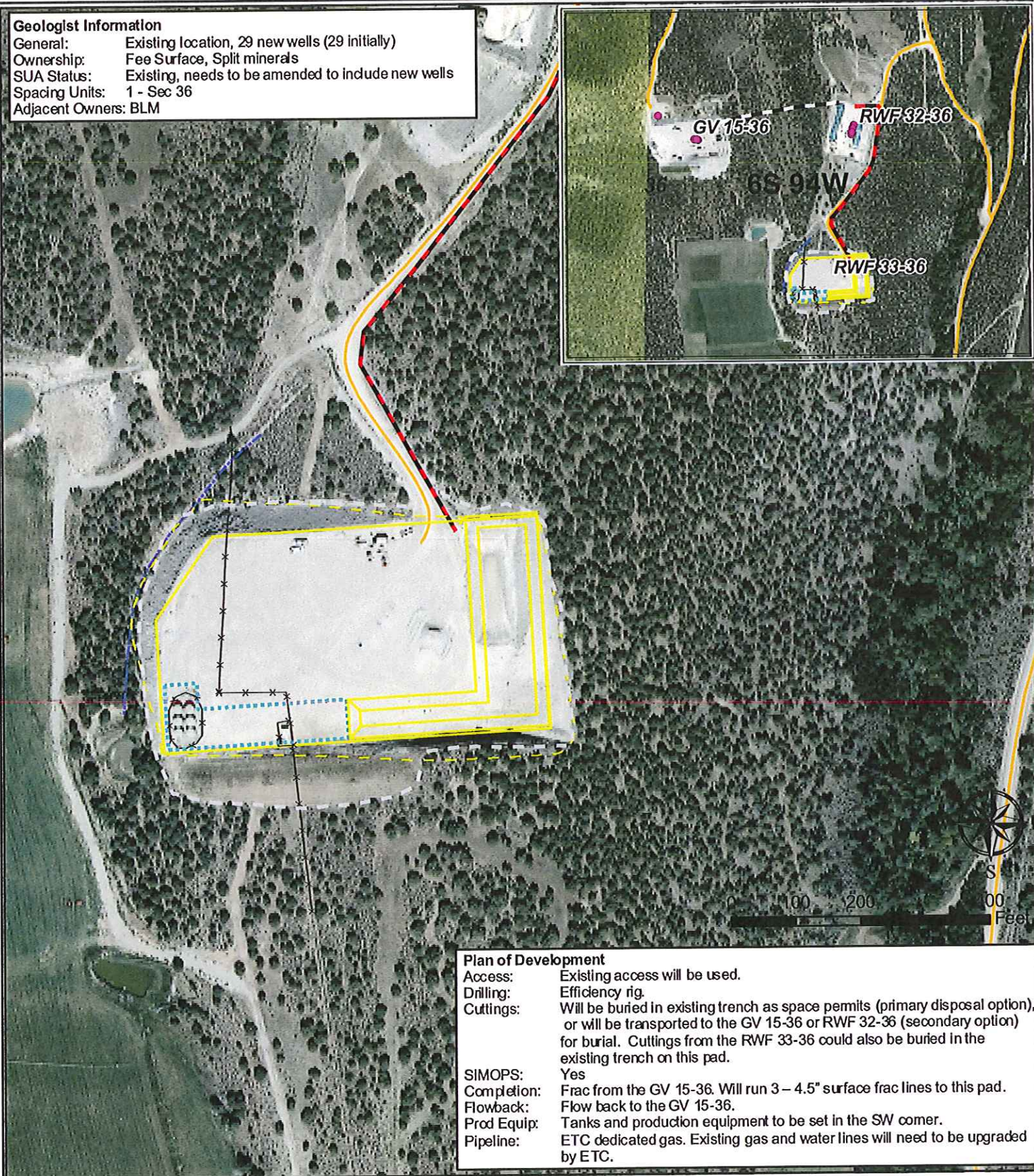
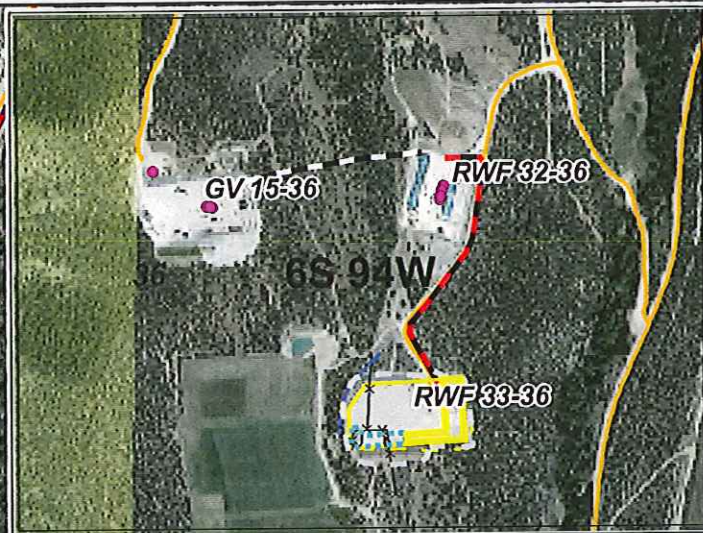


Geologist Information

General: Existing location, 29 new wells (29 initially)
Ownership: Fee Surface, Split minerals
SUA Status: Existing, needs to be amended to include new wells
Spacing Units: 1 - Sec 36
Adjacent Owners: BLM



Plan of Development

Access: Existing access will be used.
Drilling: Efficiency rig.
Cuttings: Will be buried in existing trench as space permits (primary disposal option), or will be transported to the GV 15-36 or RWF 32-36 (secondary option) for burial. Cuttings from the RWF 33-36 could also be buried in the existing trench on this pad.
SIMOPS: Yes
Completion: Frac from the GV 15-36. Will run 3 – 4.5" surface frac lines to this pad.
Flowback: Flow back to the GV 15-36.
Prod Equip: Tanks and production equipment to be set in the SW corner.
Pipeline: ETC dedicated gas. Existing gas and water lines will need to be upgraded by ETC.

Legend

- Production Gas Well
- Proposed Production Equipment Area
- Existing Limit of Disturbance
- Proposed Daylight Line
- Proposed Pad or Pit
- Drainage
- Existing Fence
- Existing Surface Frac Line
- Proposed Surface Frac Line
- Road
- Parcel Ownership (from Garfield County)
- BLM

Williams Production RMT

RWF 33-36 Plan of Development
T6S R94W, Section 36

Date Prepared: September 29,

