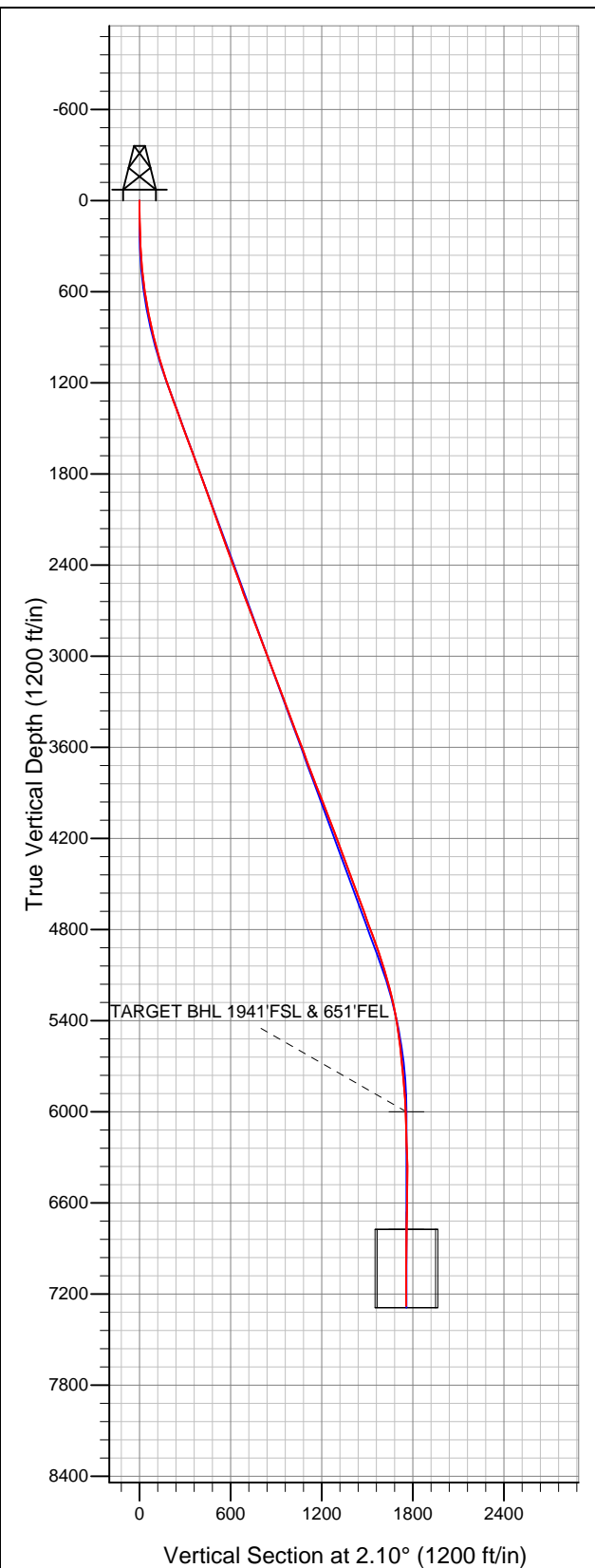


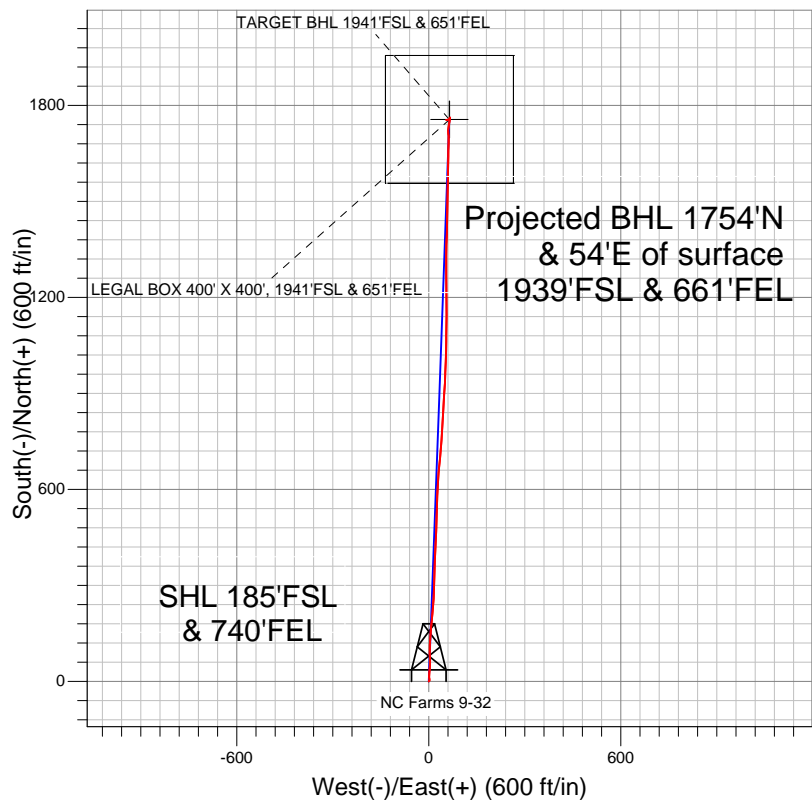
**Well Name: NC Farms 9-32**

Surface Location: NC Farms 16-32 Pad Sec.32-T7N-R64W  
North American Datum 1983 US State Plane 1983 Colorado Northern Zone  
Ground Elevation: 4805.0

|       |       |   |            |           |             |      |
|-------|-------|---|------------|-----------|-------------|------|
| +N/-S | +E/-W | Northing  | Easting    | Latitude  | Longitude   | Slot |
| 0.0   | 0.0   | 1434686.77  | 3259277.66 | 40.522873 | -104.567348 |      |
|       |       | Original Well Elev WELL @ 4816.0ft (Original Well Elev) |            |           |             |      |



**BAYSWATER EXPLORATION & PRODUCTION**



**LEGEND**

- Survey #1
- NC Farms 9-32, Wellbore #1, Plan #1 (2-03-12) R V0
- Wellbore #1

**Final Survey Plot**

Projected Final Survey -  
7568'MD & 7278'TVD @ 1755'VS  
0.60 deg Inc 280.40 deg AZ

Project: SEC.32-T7N-R64W  
Site: NC Farms 16-32 Pad Sec.32-T7N-R64W  
Well: NC Farms 9-32  
Plan: Wellbore #1



# **BAYSWATER EXPLORATION & PRODUCTION**

**SEC.32-T7N-R64W**

**NC Farms 16-32 Pad Sec.32-T7N-R64W**

**NC Farms 9-32**

**Wellbore #1**

**Survey: Survey #1**

## **Standard Survey Report**

**13 February, 2012**

|                  |                                    |                                     |                                      |
|------------------|------------------------------------|-------------------------------------|--------------------------------------|
| <b>Company:</b>  | BAYSWATER EXPLORATION & PRODUCTION | <b>Local Co-ordinate Reference:</b> | Well NC Farms 9-32                   |
| <b>Project:</b>  | SEC.32-T7N-R64W                    | <b>TVD Reference:</b>               | WELL @ 4816.0ft (Original Well Elev) |
| <b>Site:</b>     | NC Farms 16-32 Pad Sec.32-T7N-R64W | <b>MD Reference:</b>                | WELL @ 4816.0ft (Original Well Elev) |
| <b>Well:</b>     | NC Farms 9-32                      | <b>North Reference:</b>             | True                                 |
| <b>Wellbore:</b> | Wellbore #1                        | <b>Survey Calculation Method:</b>   | Minimum Curvature                    |
| <b>Design:</b>   | Wellbore #1                        | <b>Database:</b>                    | Landmark                             |

|                    |                                  |                      |                             |
|--------------------|----------------------------------|----------------------|-----------------------------|
| <b>Project</b>     | SEC.32-T7N-R64W, Weld County, CO |                      |                             |
| <b>Map System:</b> | US State Plane 1983              | <b>System Datum:</b> | Mean Sea Level              |
| <b>Geo Datum:</b>  | North American Datum 1983        |                      | Using Well Reference Point  |
| <b>Map Zone:</b>   | Colorado Northern Zone           |                      | Using geodetic scale factor |

|                       |          |                                    |                 |                   |             |
|-----------------------|----------|------------------------------------|-----------------|-------------------|-------------|
| Site                  |          | NC Farms 16-32 Pad Sec.32-T7N-R64W |                 |                   |             |
| Site Position:        |          | Northing:                          | 1,434,686.95 ft | Latitude:         | 40.522873   |
| From:                 | Lat/Long | Easting:                           | 3,259,292.67 ft | Longitude:        | -104.567294 |
| Position Uncertainty: | 0.0 ft   | Slot Radius:                       | "               | Grid Convergence: | 0.60 °      |

|                             |               |        |                            |                 |                                 |
|-----------------------------|---------------|--------|----------------------------|-----------------|---------------------------------|
| <b>Well</b>                 | NC Farms 9-32 |        |                            |                 |                                 |
| <b>Well Position</b>        | <b>+N/-S</b>  | 0.0 ft | <b>Northing:</b>           | 1,434,686.77 ft | <b>Latitude:</b> 40.522873      |
|                             | <b>+E/-W</b>  | 0.0 ft | <b>Easting:</b>            | 3,259,277.66 ft | <b>Longitude:</b> -104.567348   |
| <b>Position Uncertainty</b> |               | 0.0 ft | <b>Wellhead Elevation:</b> | ft              | <b>Ground Level:</b> 4,805.0 ft |

|           |             |             |                 |               |                     |
|-----------|-------------|-------------|-----------------|---------------|---------------------|
| Wellbore  | Wellbore #1 |             |                 |               |                     |
| Magnetics | Model Name  | Sample Date | Declination (°) | Dip Angle (°) | Field Strength (nT) |
|           | IGRF2010    | 2/3/2012    | 8.68            | 67.16         | 53,150              |

|                   |                          |               |               |                  |     |
|-------------------|--------------------------|---------------|---------------|------------------|-----|
| Design            | Wellbore #1              |               |               |                  |     |
| Audit Notes:      |                          |               |               |                  |     |
| Version:          | 1.0                      | Phase:        | ACTUAL        | Tie On Depth:    | 0.0 |
| Vertical Section: | Depth From (TVD)<br>(ft) | +N/-S<br>(ft) | +E/-W<br>(ft) | Direction<br>(°) |     |
|                   | 0.0                      | 0.0           | 0.0           | 2.10             |     |

| Survey Program |            | Date                    |           |                |
|----------------|------------|-------------------------|-----------|----------------|
| From<br>(ft)   | To<br>(ft) | Survey (Wellbore)       | Tool Name | Description    |
| 129.0          | 7,568.0    | Survey #1 (Wellbore #1) | MWD       | MWD - Standard |

| Survey      | Wellbore Data       |                 |             |                     |           |           |                       |                       |                      |                     |
|-------------|---------------------|-----------------|-------------|---------------------|-----------|-----------|-----------------------|-----------------------|----------------------|---------------------|
|             | Measured Depth (ft) | Inclination (°) | Azimuth (°) | Vertical Depth (ft) | +N-S (ft) | +E-W (ft) | Vertical Section (ft) | Dogleg Rate (°/100ft) | Build Rate (°/100ft) | Turn Rate (°/100ft) |
| Main Survey | 0.0                 | 0.00            | 0.00        | 0.0                 | 0.0       | 0.0       | 0.0                   | 0.00                  | 0.00                 | 0.00                |
|             | 129.0               | 1.30            | 46.20       | 129.0               | 1.0       | 1.1       | 1.1                   | 1.01                  | 1.01                 | 0.00                |
|             | 218.0               | 1.80            | 3.70        | 218.0               | 3.1       | 1.9       | 3.2                   | 1.37                  | 0.56                 | -47.75              |
|             | 310.0               | 3.10            | 355.40      | 309.9               | 7.0       | 1.8       | 7.1                   | 1.46                  | 1.41                 | -9.02               |
|             | 402.0               | 4.50            | 356.30      | 401.7               | 13.1      | 1.3       | 13.2                  | 1.52                  | 1.52                 | 0.98                |
|             | 494.0               | 5.80            | 3.70        | 493.3               | 21.4      | 1.4       | 21.4                  | 1.58                  | 1.41                 | 8.04                |
|             | 586.0               | 7.50            | 5.40        | 584.7               | 32.0      | 2.3       | 32.0                  | 1.86                  | 1.85                 | 1.85                |
|             | 678.0               | 9.70            | 4.70        | 675.6               | 45.7      | 3.5       | 45.8                  | 2.39                  | 2.39                 | -0.76               |
|             | 782.0               | 12.40           | 358.90      | 777.7               | 65.6      | 4.0       | 65.7                  | 2.80                  | 2.60                 | -5.58               |
|             | 866.0               | 13.00           | 356.70      | 859.6               | 84.0      | 3.3       | 84.1                  | 0.92                  | 0.71                 | -2.62               |
|             | 960.0               | 14.50           | 3.10        | 951.0               | 106.3     | 3.3       | 106.4                 | 2.27                  | 1.60                 | 6.81                |
|             | 1,054.0             | 16.00           | 2.50        | 1,041.6             | 131.0     | 4.5       | 131.1                 | 1.60                  | 1.60                 | -0.64               |

|                  |                                    |                                     |                                      |
|------------------|------------------------------------|-------------------------------------|--------------------------------------|
| <b>Company:</b>  | BAYSWATER EXPLORATION & PRODUCTION | <b>Local Co-ordinate Reference:</b> | Well NC Farms 9-32                   |
| <b>Project:</b>  | SEC.32-T7N-R64W                    | <b>TVD Reference:</b>               | WELL @ 4816.0ft (Original Well Elev) |
| <b>Site:</b>     | NC Farms 16-32 Pad Sec.32-T7N-R64W | <b>MD Reference:</b>                | WELL @ 4816.0ft (Original Well Elev) |
| <b>Well:</b>     | NC Farms 9-32                      | <b>North Reference:</b>             | True                                 |
| <b>Wellbore:</b> | Wellbore #1                        | <b>Survey Calculation Method:</b>   | Minimum Curvature                    |
| <b>Design:</b>   | Wellbore #1                        | <b>Database:</b>                    | Landmark                             |

| Survey              |                 |             |                     |            |            |                       |                       |                      |                     |
|---------------------|-----------------|-------------|---------------------|------------|------------|-----------------------|-----------------------|----------------------|---------------------|
| Measured Depth (ft) | Inclination (°) | Azimuth (°) | Vertical Depth (ft) | +N/-S (ft) | +E/-W (ft) | Vertical Section (ft) | Dogleg Rate (°/100ft) | Build Rate (°/100ft) | Turn Rate (°/100ft) |
| 1,148.0             | 17.60           | 4.90        | 1,131.6             | 158.1      | 6.3        | 158.3                 | 1.85                  | 1.70                 | 2.55                |
| 1,241.0             | 19.30           | 5.40        | 1,219.8             | 187.4      | 8.9        | 187.6                 | 1.84                  | 1.83                 | 0.54                |
| 1,335.0             | 19.90           | 5.30        | 1,308.4             | 218.8      | 11.9       | 219.1                 | 0.64                  | 0.64                 | -0.11               |
| 1,429.0             | 20.30           | 3.20        | 1,396.7             | 251.0      | 14.2       | 251.4                 | 0.88                  | 0.43                 | -2.23               |
| 1,522.0             | 20.20           | 2.90        | 1,483.9             | 283.2      | 16.0       | 283.6                 | 0.16                  | -0.11                | -0.32               |
| 1,616.0             | 20.00           | 0.60        | 1,572.2             | 315.5      | 16.9       | 315.9                 | 0.87                  | -0.21                | -2.45               |
| 1,710.0             | 20.50           | 2.50        | 1,660.4             | 348.0      | 17.8       | 348.4                 | 0.88                  | 0.53                 | 2.02                |
| 1,803.0             | 20.20           | 1.70        | 1,747.6             | 380.3      | 19.0       | 380.8                 | 0.44                  | -0.32                | -0.86               |
| 1,897.0             | 19.90           | 3.20        | 1,835.9             | 412.5      | 20.4       | 413.0                 | 0.63                  | -0.32                | 1.60                |
| 1,991.0             | 19.60           | 2.40        | 1,924.4             | 444.2      | 21.9       | 444.7                 | 0.43                  | -0.32                | -0.85               |
| 2,084.0             | 20.00           | 1.90        | 2,011.9             | 475.7      | 23.1       | 476.2                 | 0.47                  | 0.43                 | -0.54               |
| 2,178.0             | 20.20           | 2.10        | 2,100.1             | 508.0      | 24.3       | 508.5                 | 0.22                  | 0.21                 | 0.21                |
| 2,272.0             | 19.30           | 2.40        | 2,188.6             | 539.7      | 25.5       | 540.3                 | 0.96                  | -0.96                | 0.32                |
| 2,365.0             | 19.30           | 1.70        | 2,276.4             | 570.5      | 26.6       | 571.0                 | 0.25                  | 0.00                 | -0.75               |
| 2,459.0             | 20.30           | 2.80        | 2,364.8             | 602.3      | 27.9       | 602.9                 | 1.14                  | 1.06                 | 1.17                |
| 2,553.0             | 20.70           | 3.20        | 2,452.9             | 635.1      | 29.6       | 635.8                 | 0.45                  | 0.43                 | 0.43                |
| 2,647.0             | 19.60           | 4.50        | 2,541.1             | 667.4      | 31.7       | 668.2                 | 1.26                  | -1.17                | 1.38                |
| 2,740.0             | 20.80           | 5.50        | 2,628.4             | 699.4      | 34.5       | 700.2                 | 1.34                  | 1.29                 | 1.08                |
| 2,834.0             | 21.20           | 5.80        | 2,716.2             | 733.0      | 37.9       | 733.9                 | 0.44                  | 0.43                 | 0.32                |
| 2,928.0             | 20.70           | 4.50        | 2,803.9             | 766.4      | 40.9       | 767.4                 | 0.73                  | -0.53                | -1.38               |
| 3,021.0             | 20.70           | 3.10        | 2,890.9             | 799.2      | 43.1       | 800.3                 | 0.53                  | 0.00                 | -1.51               |
| 3,115.0             | 20.70           | 1.00        | 2,978.9             | 832.4      | 44.3       | 833.5                 | 0.79                  | 0.00                 | -2.23               |
| 3,209.0             | 20.50           | 3.80        | 3,066.9             | 865.5      | 45.6       | 866.6                 | 1.07                  | -0.21                | 2.98                |
| 3,302.0             | 20.80           | 4.40        | 3,153.9             | 898.2      | 48.0       | 899.3                 | 0.39                  | 0.32                 | 0.65                |
| 3,396.0             | 21.50           | 3.00        | 3,241.6             | 932.0      | 50.2       | 933.2                 | 0.92                  | 0.74                 | -1.49               |
| 3,490.0             | 21.00           | 2.10        | 3,329.2             | 966.1      | 51.7       | 967.3                 | 0.64                  | -0.53                | -0.96               |
| 3,583.0             | 20.00           | 2.70        | 3,416.3             | 998.6      | 53.0       | 999.9                 | 1.10                  | -1.08                | 0.65                |
| 3,677.0             | 20.30           | 1.20        | 3,504.5             | 1,031.0    | 54.1       | 1,032.2               | 0.64                  | 0.32                 | -1.60               |
| 3,771.0             | 21.00           | 359.80      | 3,592.5             | 1,064.1    | 54.4       | 1,065.4               | 0.91                  | 0.74                 | -1.49               |
| 3,865.0             | 19.40           | 1.10        | 3,680.7             | 1,096.6    | 54.7       | 1,097.8               | 1.77                  | -1.70                | 1.38                |
| 3,958.0             | 21.30           | 1.80        | 3,767.9             | 1,128.9    | 55.5       | 1,130.2               | 2.06                  | 2.04                 | 0.75                |
| 4,052.0             | 21.20           | 359.30      | 3,855.5             | 1,162.9    | 55.8       | 1,164.2               | 0.97                  | -0.11                | -2.66               |
| 4,146.0             | 21.90           | 359.30      | 3,942.9             | 1,197.5    | 55.4       | 1,198.7               | 0.74                  | 0.74                 | 0.00                |
| 4,239.0             | 21.10           | 359.70      | 4,029.5             | 1,231.6    | 55.1       | 1,232.7               | 0.87                  | -0.86                | 0.43                |
| 4,333.0             | 21.20           | 359.00      | 4,117.1             | 1,265.5    | 54.7       | 1,266.6               | 0.29                  | 0.11                 | -0.74               |
| 4,427.0             | 20.60           | 0.30        | 4,204.9             | 1,299.0    | 54.5       | 1,300.1               | 0.81                  | -0.64                | 1.38                |
| 4,520.0             | 20.70           | 0.60        | 4,292.0             | 1,331.8    | 54.8       | 1,332.9               | 0.16                  | 0.11                 | 0.32                |
| 4,614.0             | 20.30           | 1.60        | 4,380.0             | 1,364.7    | 55.4       | 1,365.8               | 0.57                  | -0.43                | 1.06                |
| 4,708.0             | 20.00           | 2.10        | 4,468.3             | 1,397.1    | 56.4       | 1,398.2               | 0.37                  | -0.32                | 0.53                |
| 4,801.0             | 19.80           | 1.00        | 4,555.7             | 1,428.7    | 57.3       | 1,429.8               | 0.46                  | -0.22                | -1.18               |
| 4,895.0             | 21.20           | 0.70        | 4,643.7             | 1,461.6    | 57.8       | 1,462.8               | 1.49                  | 1.49                 | -0.32               |
| 4,989.0             | 19.30           | 0.70        | 4,731.9             | 1,494.2    | 58.2       | 1,495.3               | 2.02                  | -2.02                | 0.00                |
| 5,083.0             | 20.30           | 1.30        | 4,820.4             | 1,526.0    | 58.7       | 1,527.1               | 1.09                  | 1.06                 | 0.64                |
| 5,176.0             | 20.20           | 1.60        | 4,907.6             | 1,558.2    | 59.5       | 1,559.3               | 0.16                  | -0.11                | 0.32                |
| 5,270.0             | 17.90           | 0.60        | 4,996.5             | 1,588.8    | 60.2       | 1,590.0               | 2.47                  | -2.45                | -1.06               |
| 5,364.0             | 15.90           | 0.60        | 5,086.4             | 1,616.2    | 60.4       | 1,617.3               | 2.13                  | -2.13                | 0.00                |
| 5,457.0             | 15.80           | 1.80        | 5,175.9             | 1,641.6    | 61.0       | 1,642.7               | 0.37                  | -0.11                | 1.29                |
| 5,551.0             | 12.70           | 0.10        | 5,267.0             | 1,664.7    | 61.4       | 1,665.8               | 3.33                  | -3.30                | -1.81               |
| 5,645.0             | 10.40           | 2.40        | 5,359.1             | 1,683.5    | 61.8       | 1,684.6               | 2.49                  | -2.45                | 2.45                |
| 5,738.0             | 8.30            | 358.10      | 5,450.8             | 1,698.6    | 61.9       | 1,699.7               | 2.38                  | -2.26                | -4.62               |
| 5,832.0             | 6.90            | 355.10      | 5,544.0             | 1,711.0    | 61.2       | 1,712.1               | 1.55                  | -1.49                | -3.19               |
| 5,926.0             | 6.90            | 1.50        | 5,637.3             | 1,722.3    | 60.9       | 1,723.3               | 0.82                  | 0.00                 | 6.81                |
| 6,019.0             | 5.50            | 6.70        | 5,729.8             | 1,732.3    | 61.5       | 1,733.4               | 1.62                  | -1.51                | 5.59                |

|                  |                                    |                                     |                                      |
|------------------|------------------------------------|-------------------------------------|--------------------------------------|
| <b>Company:</b>  | BAYSWATER EXPLORATION & PRODUCTION | <b>Local Co-ordinate Reference:</b> | Well NC Farms 9-32                   |
| <b>Project:</b>  | SEC.32-T7N-R64W                    | <b>TVD Reference:</b>               | WELL @ 4816.0ft (Original Well Elev) |
| <b>Site:</b>     | NC Farms 16-32 Pad Sec.32-T7N-R64W | <b>MD Reference:</b>                | WELL @ 4816.0ft (Original Well Elev) |
| <b>Well:</b>     | NC Farms 9-32                      | <b>North Reference:</b>             | True                                 |
| <b>Wellbore:</b> | Wellbore #1                        | <b>Survey Calculation Method:</b>   | Minimum Curvature                    |
| <b>Design:</b>   | Wellbore #1                        | <b>Database:</b>                    | Landmark                             |

| Survey   |                 |             |                     |            |            |                       |                       |                      |                     |
|--|-----------------|-------------|---------------------|------------|------------|-----------------------|-----------------------|----------------------|---------------------|
| Measured Depth (ft)                                  | Inclination (°) | Azimuth (°) | Vertical Depth (ft) | +N/-S (ft) | +E/-W (ft) | Vertical Section (ft) | Dogleg Rate (°/100ft) | Build Rate (°/100ft) | Turn Rate (°/100ft) |
| 6,113.0  | 4.60            | 12.60       | 5,823.4             | 1,740.4    | 62.9       | 1,741.6               | 1.10                  | -0.96                | 6.28                |
| 6,207.0  | 3.50            | 14.10       | 5,917.2             | 1,746.9    | 64.4       | 1,748.1               | 1.18                  | -1.17                | 1.60                |
| 6,290.2  | 2.33            | 2.30        | 6,000.2             | 1,751.1    | 65.1       | 1,752.3               | 1.58                  | -1.41                | -14.19              |
| <b>TARGET BHL 1941'FSL &amp; 651'FEL</b>             |                 |             |                     |            |            |                       |                       |                      |                     |
| 6,300.0  | 2.20            | 0.10        | 6,010.1             | 1,751.4    | 65.1       | 1,752.6               | 1.58                  | -1.30                | -22.41              |
| 6,394.0  | 1.50            | 2.60        | 6,104.0             | 1,754.5    | 65.1       | 1,755.7               | 0.75                  | -0.74                | 2.66                |
| 6,488.0  | 1.80            | 15.30       | 6,198.0             | 1,757.1    | 65.6       | 1,758.3               | 0.50                  | 0.32                 | 13.51               |
| 6,582.0  | 2.40            | 9.40        | 6,291.9             | 1,760.5    | 66.3       | 1,761.7               | 0.68                  | 0.64                 | -6.28               |
| 6,675.0  | 0.50            | 187.10      | 6,384.9             | 1,762.0    | 66.6       | 1,763.3               | 3.12                  | -2.04                | 191.08              |
| 6,769.0  | 0.80            | 207.90      | 6,478.9             | 1,761.0    | 66.2       | 1,762.3               | 0.40                  | 0.32                 | 22.13               |
| 6,863.0  | 1.00            | 218.00      | 6,572.9             | 1,759.8    | 65.4       | 1,761.0               | 0.27                  | 0.21                 | 10.74               |
| 6,956.0  | 1.00            | 222.10      | 6,665.8             | 1,758.6    | 64.4       | 1,759.7               | 0.08                  | 0.00                 | 4.41                |
| 7,050.0  | 1.00            | 222.00      | 6,759.8             | 1,757.3    | 63.3       | 1,758.5               | 0.00                  | 0.00                 | -0.11               |
| 7,065.2  | 1.02            | 222.82      | 6,775.0             | 1,757.1    | 63.1       | 1,758.3               | 0.14                  | 0.10                 | 5.41                |
| <b>LEGAL BOX 400' X 400', 1941'FSL &amp; 651'FEL</b> |                 |             |                     |            |            |                       |                       |                      |                     |
| 7,144.0  | 1.10            | 226.70      | 6,853.8             | 1,756.1    | 62.0       | 1,757.2               | 0.14                  | 0.11                 | 4.92                |
| 7,237.0  | 1.50            | 245.40      | 6,946.8             | 1,755.0    | 60.3       | 1,756.0               | 0.62                  | 0.43                 | 20.11               |
| 7,331.0  | 1.20            | 266.40      | 7,040.8             | 1,754.4    | 58.2       | 1,755.4               | 0.61                  | -0.32                | 22.34               |
| 7,423.0  | 0.90            | 269.90      | 7,132.7             | 1,754.4    | 56.5       | 1,755.2               | 0.33                  | -0.33                | 3.80                |
| 7,518.0  | 0.90            | 269.90      | 7,227.7             | 1,754.4    | 55.0       | 1,755.2               | 0.00                  | 0.00                 | 0.00                |
| 7,568.0  | 0.60            | 280.40      | 7,277.7             | 1,754.4    | 54.4       | 1,755.2               | 0.66                  | -0.60                | 21.00               |

Checked By: \_\_\_\_\_ Approved By: \_\_\_\_\_ Date: \_\_\_\_\_