



CEMENT BOND LOG

Mesa Wireline

Company	BAYSWATER EXPLORATION & PROD.		
Well	BOSWORTH-BAILEY 16-31		
Field	EATON		
County	WELD		
State	COLORADO		
Company BAYSWATER EXPLORATION & PROD. LLC		Other Services	
Well BOSWORTH-BAILEY 16-31		NONE	
Field EATON			
County WELD		State COLORADO	
Location:		API # : 05-123-34743-00	
SHL: 717' FSL & 203' FEL SESE			
SEC: 31 TWP: 7N RGE: 66W		Elevation	
Permanent Datum GROUND LEVEL		K.B. 4892'	
Log Measured From KELLY BUSHING = 16'		D.F. 4891'	
Drilling Measured From KELLY BUSHING		G.L. 4892'	

Date	9 MARCH 2012				
Run Number	ONE				
Depth Driller	7805'				
Depth Logger	7559'				
Bottom Logged Interval	7559'				
Top Log Interval	600'				
Open Hole Size	7.875"				
Type Fluid	WATER				
Density / Viscosity	~8.34 LBS/GAL				
Max. Recorded Temp.	238 DegF				
Estimated Cement Top	3140'				
Time Well Ready	N/A				
Time Logger on Bottom	N/A				
Equipment Number	10801W/PB01				
Location	AULT, CO				
Recorded By	B. MAYNARICH				
Witnessed By	R. OHLEMEIER				
Borehole Record					
Run Number	Bit	From	To	Size	Tubing Record
ONE	12.25"	0	956'		Weight
TWO	7.875"	0	7752'		From
					To
Casing Record	Size		Wgt/Ft	Top	Bottom
Surface String	8.625"		24#	0	956'
Prot. String					
Production String	4.5"		11.6#	0	7595'
Liner					

<<< Fold Here >>>

All interpretations are opinions based on inferences from electrical or other measurements and we cannot and do not guarantee the accuracy or correctness of any interpretation, and we shall not, except in the case of gross or willful negligence on our part, be liable or responsible for any loss, costs, damages, or expenses incurred or sustained by anyone resulting from any interpretation made by any of our officers, agents or employees. These interpretations are also subject to our general terms and conditions set out in our current Price Schedule.

Comments

LOG CORRELATED TO HALLIBERTON SPECTRAL DENSITY LOG DATED 23 FEB 2012
SHORT JOINT: 6952' - 6972'

WE APPRECIATE YOUR BUSINESS, MESA WIRELINE LLC, GRAND JUNCTION CO. (970) 257-0458



REPEAT PASS

5" = 100'

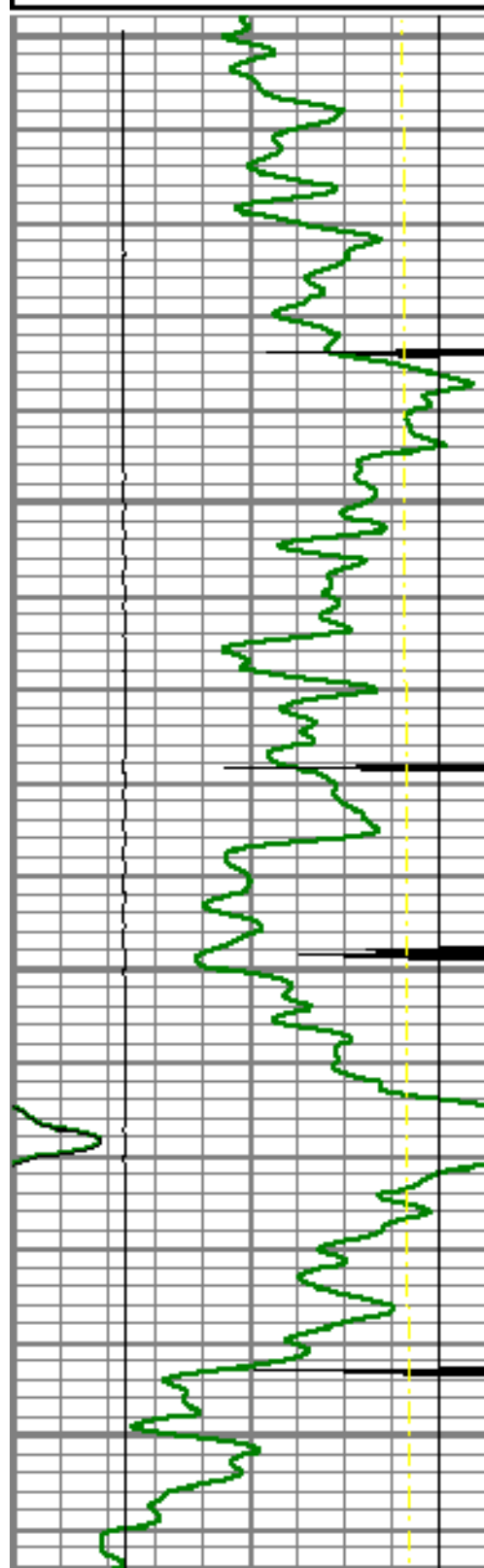
Mesa Wireline

Database File: bosworth_bailey 16-31.db
 Dataset Pathname: pass3
 Presentation Format: dobl_prb
 Dataset Creation: Fri Mar 09 13:18:34 2012 by Log Std Casedhole 09061
 Charted by: Depth in Feet scaled 1:240

0	Gamma Ray (GAPI)	200
0	LTEN (lb)	5000
9	CCL	-1
20	TEMP (degF)	280

0	Amplified Amplitude (mV)	20
0	Amplitude (mV)	100
0	TT3 (usec)	280

200 Variable Density 1200

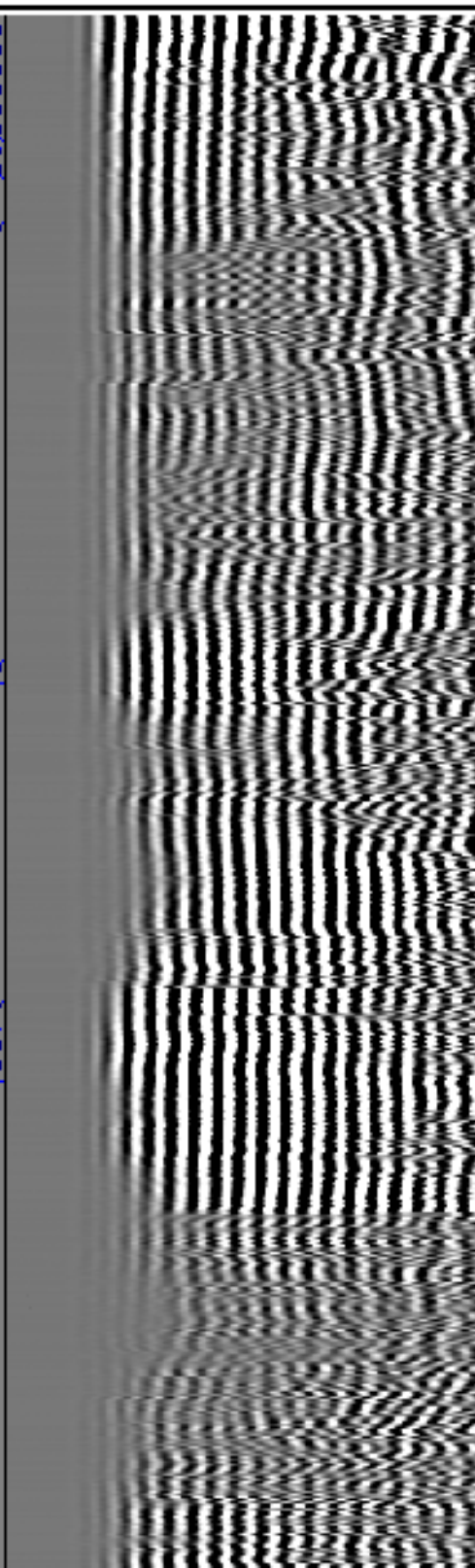
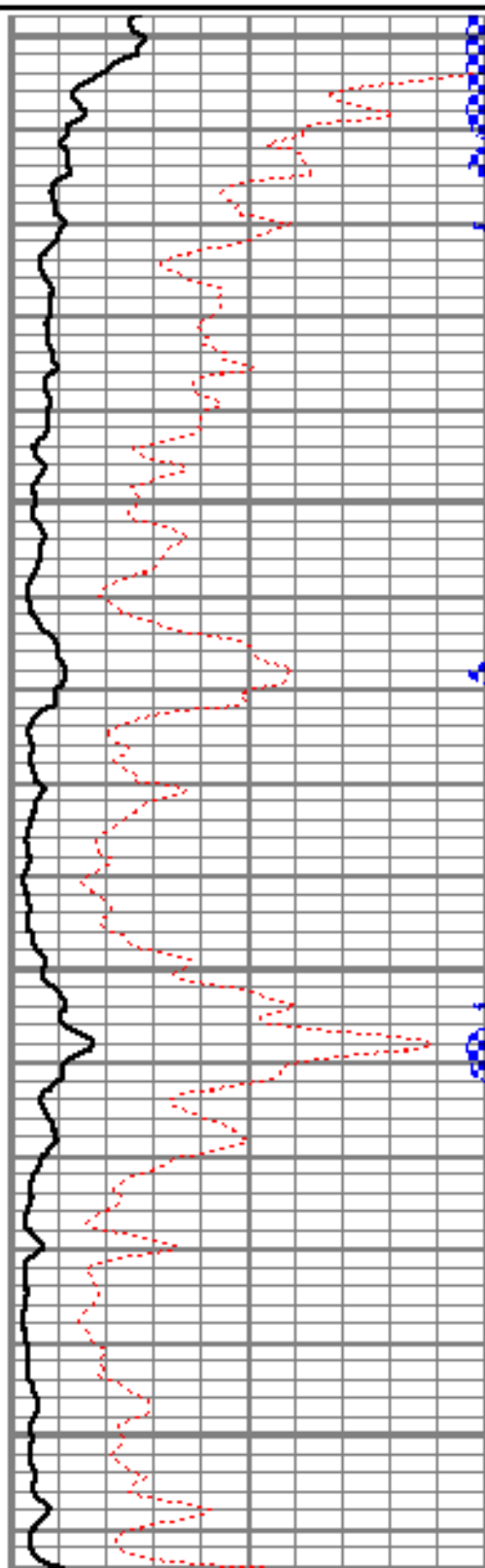


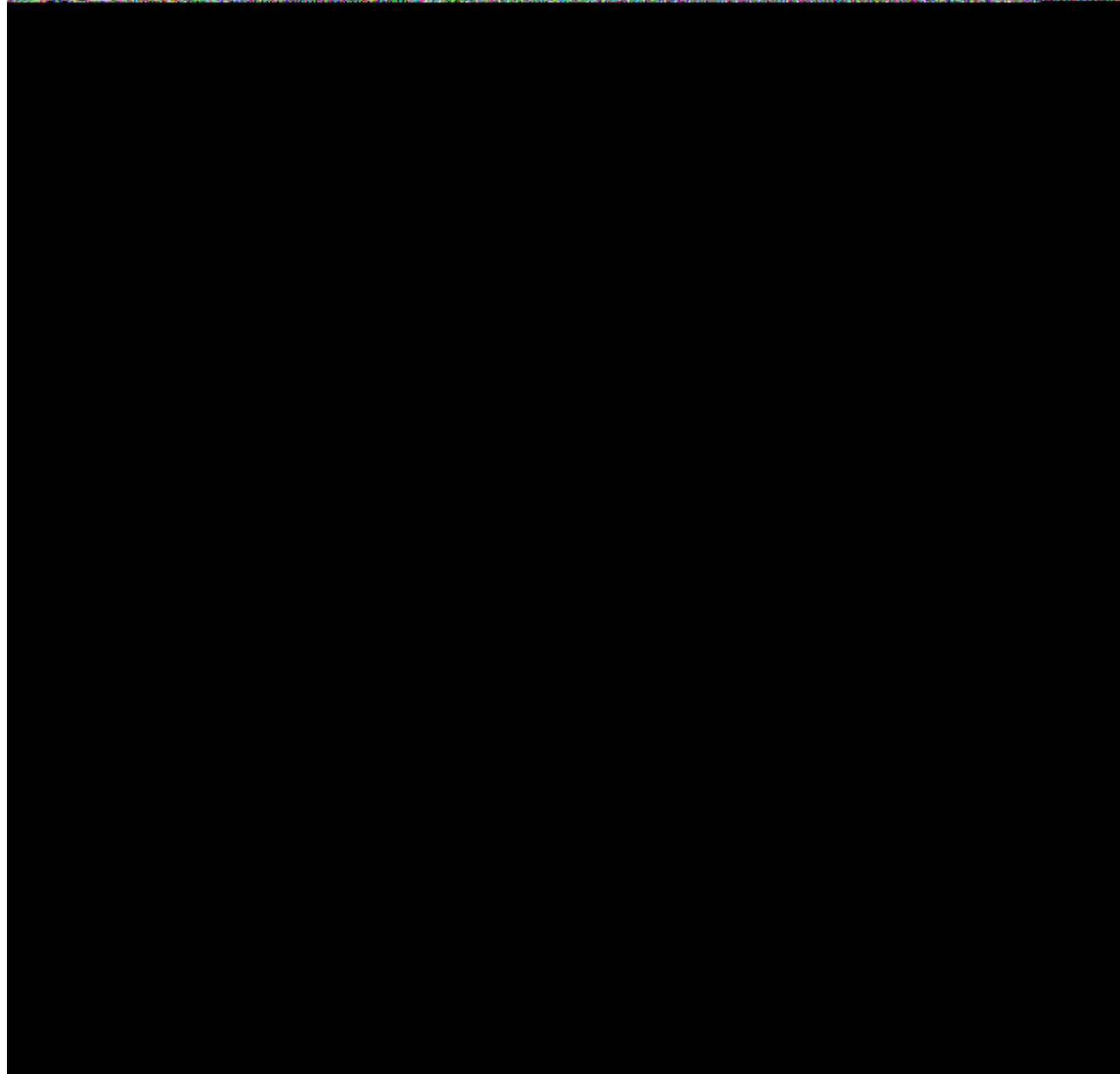
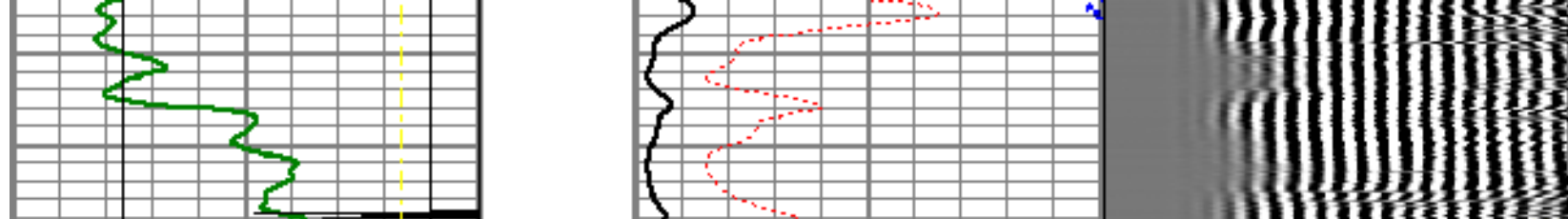
7200

7250

7300

7350

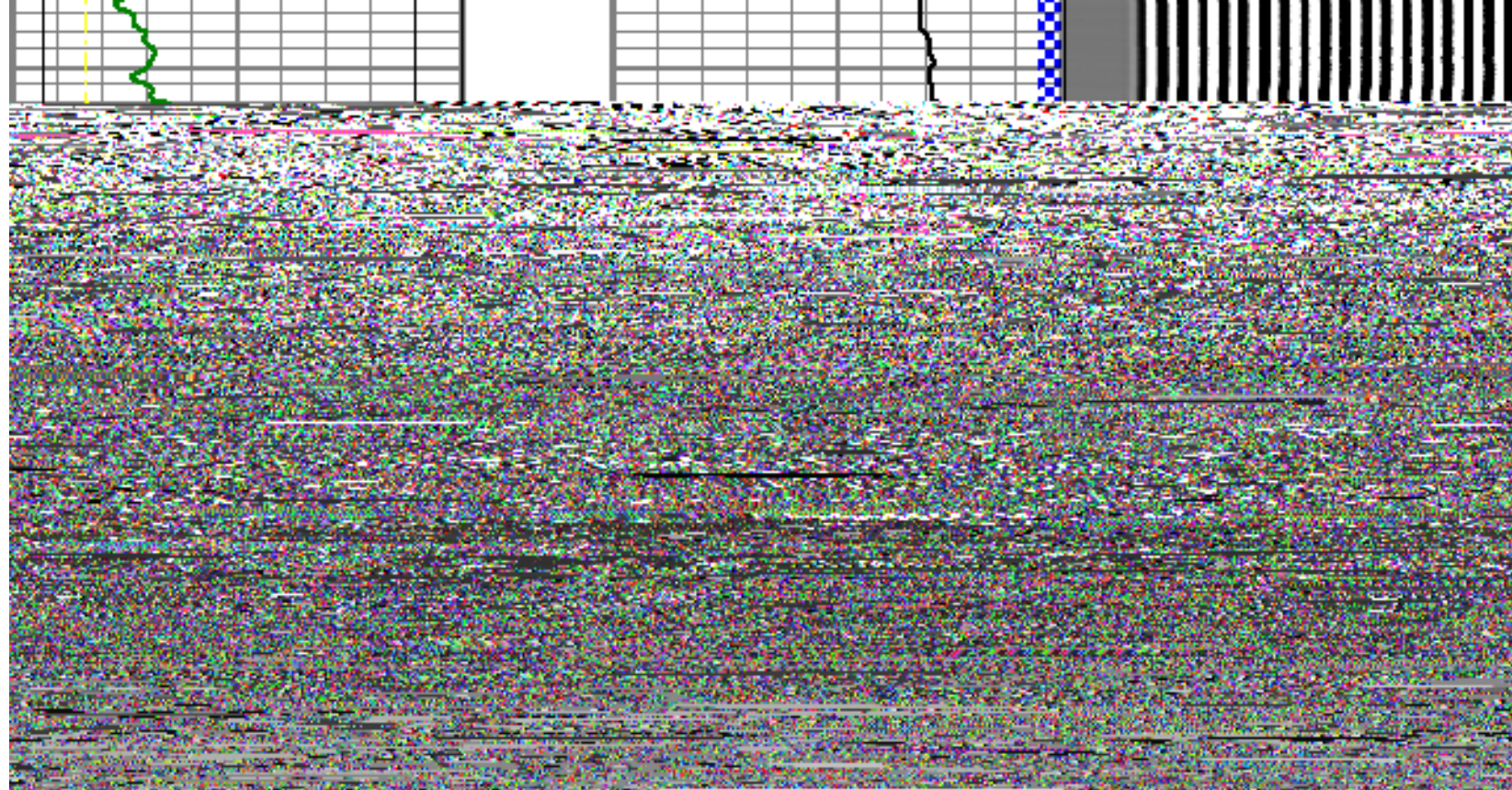


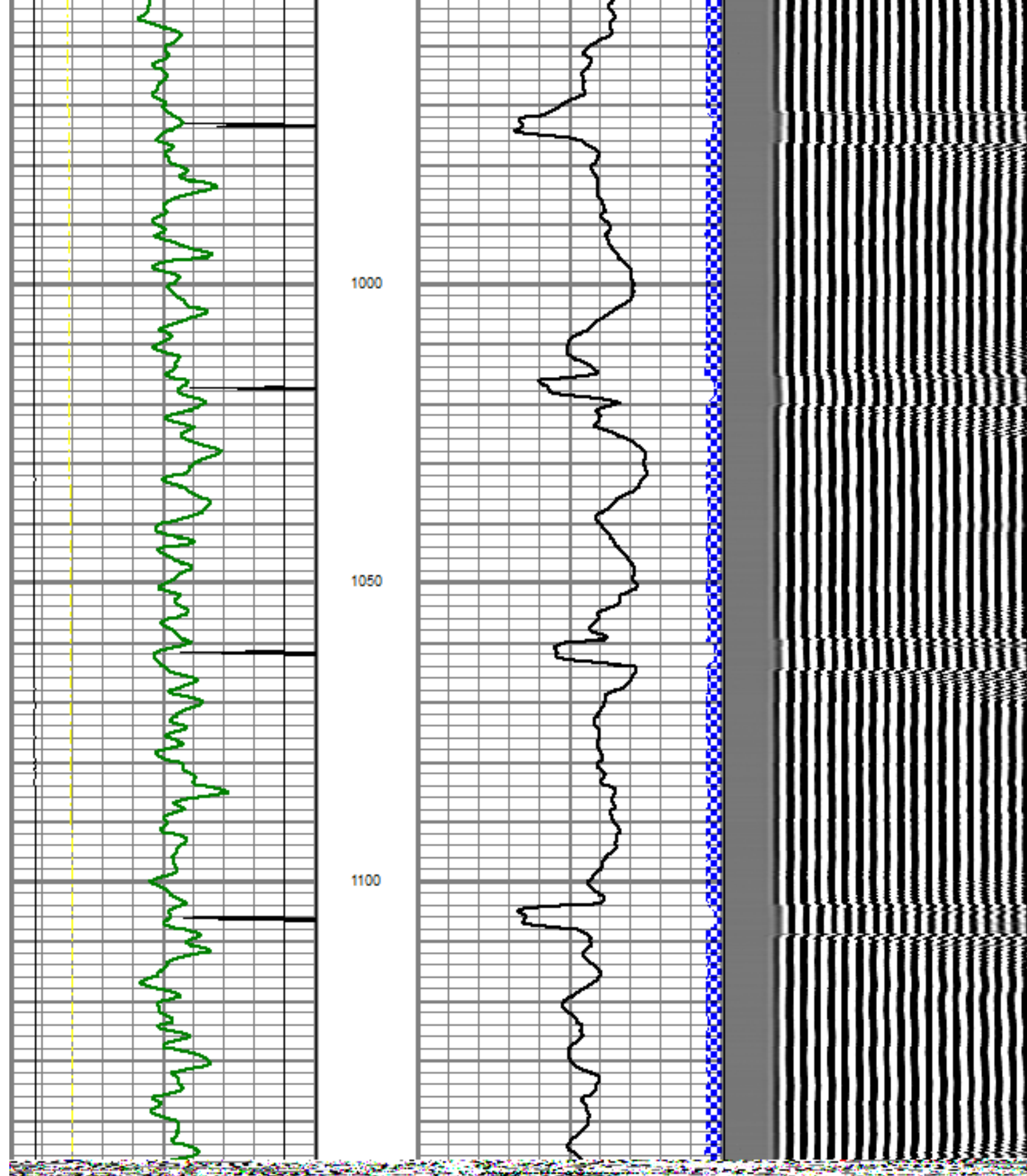


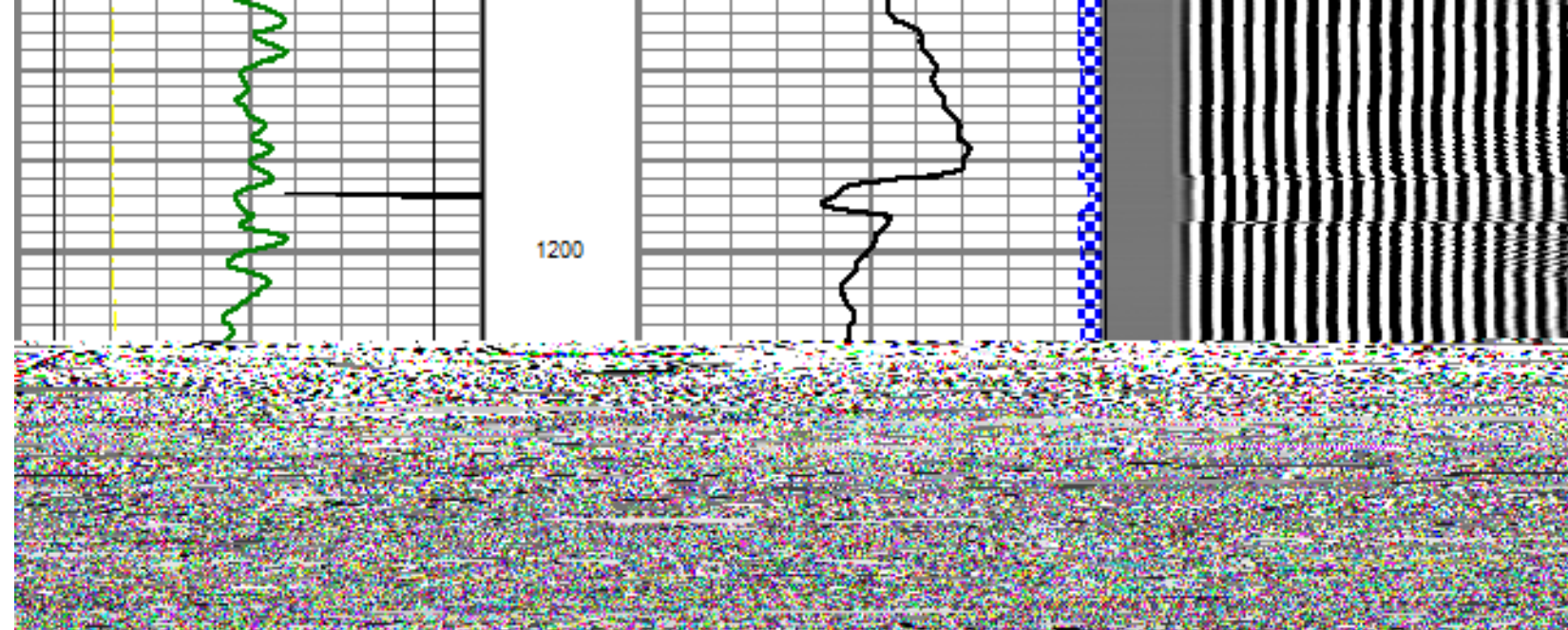


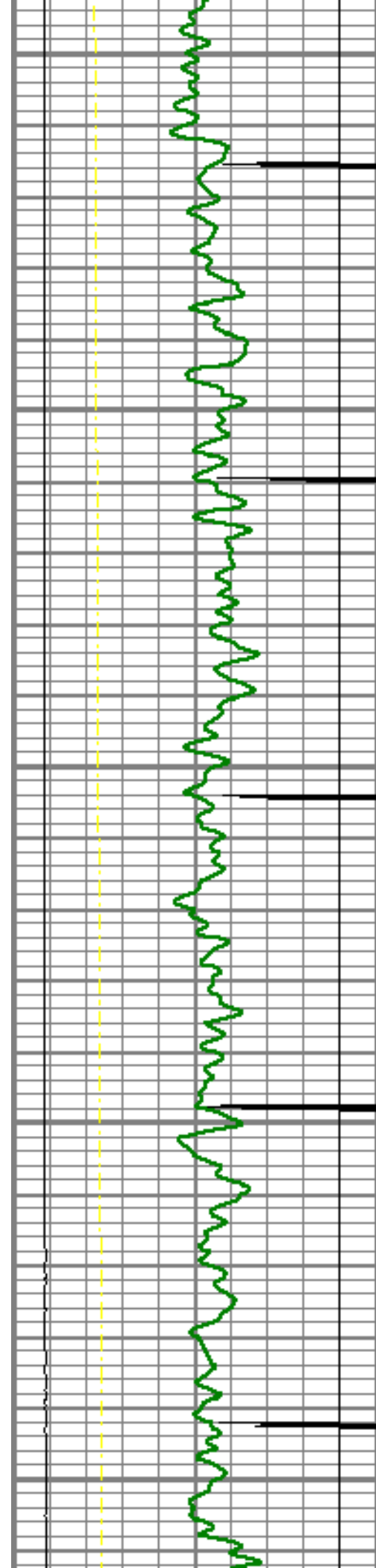
MAIN PASS

5" = 100'









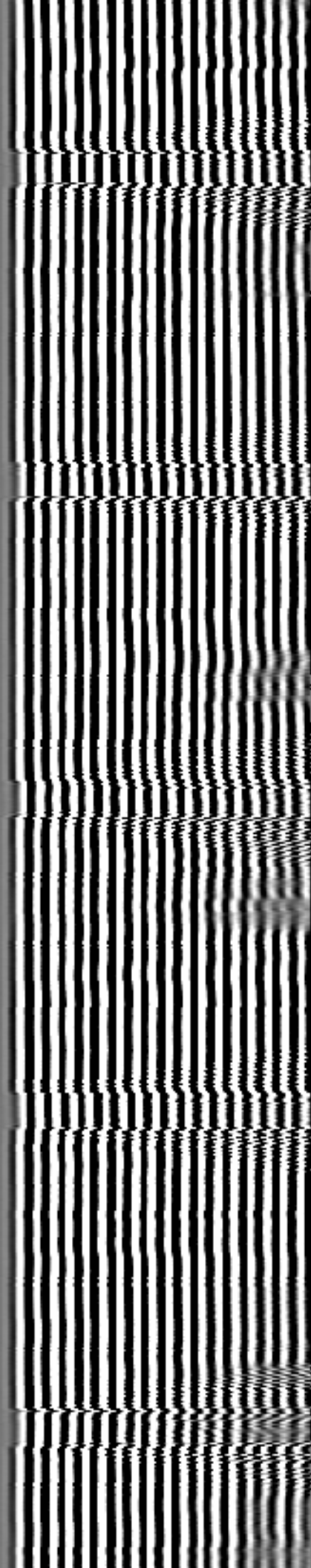
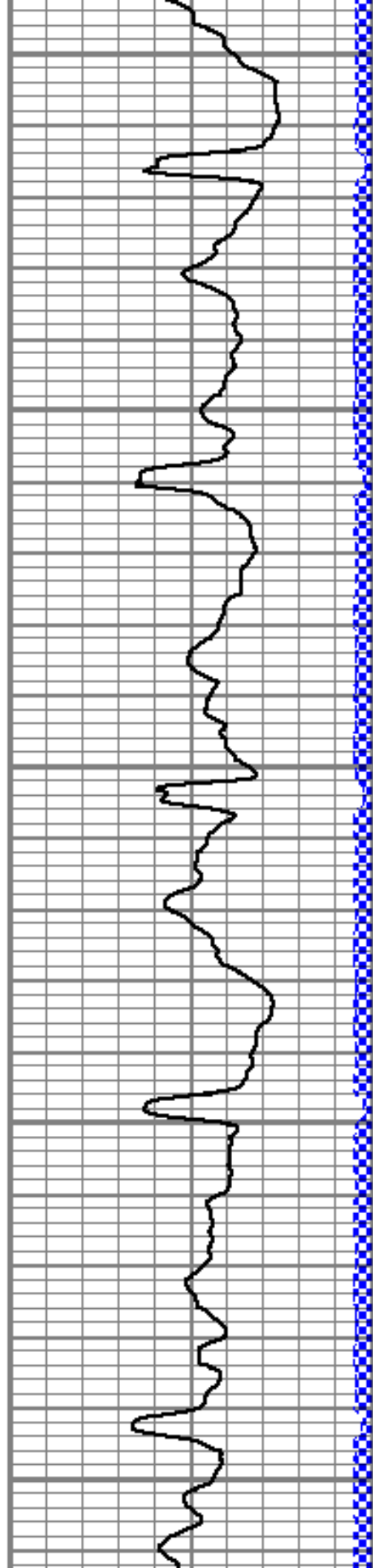
1400

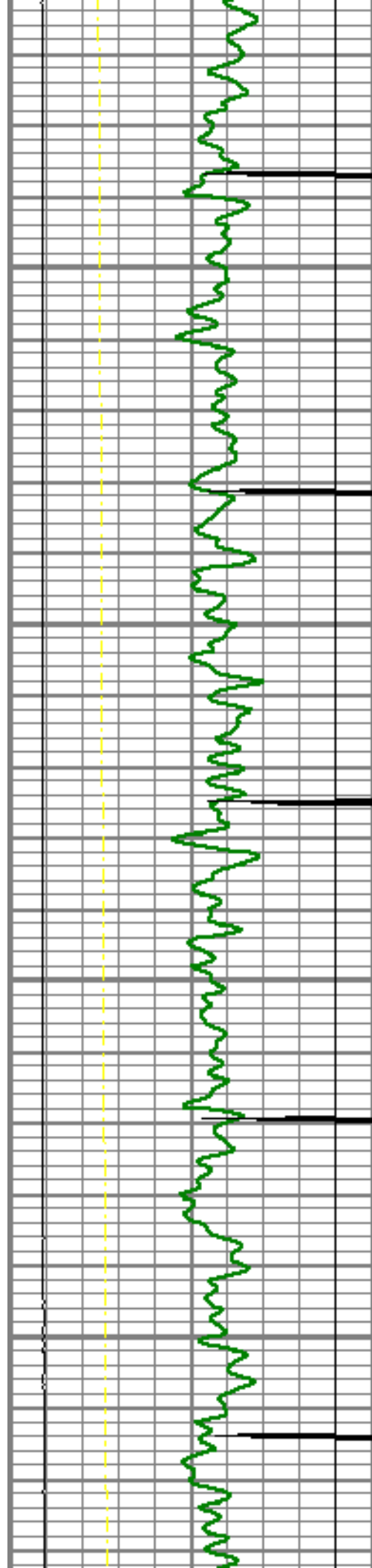
1450

1500

1550

1600



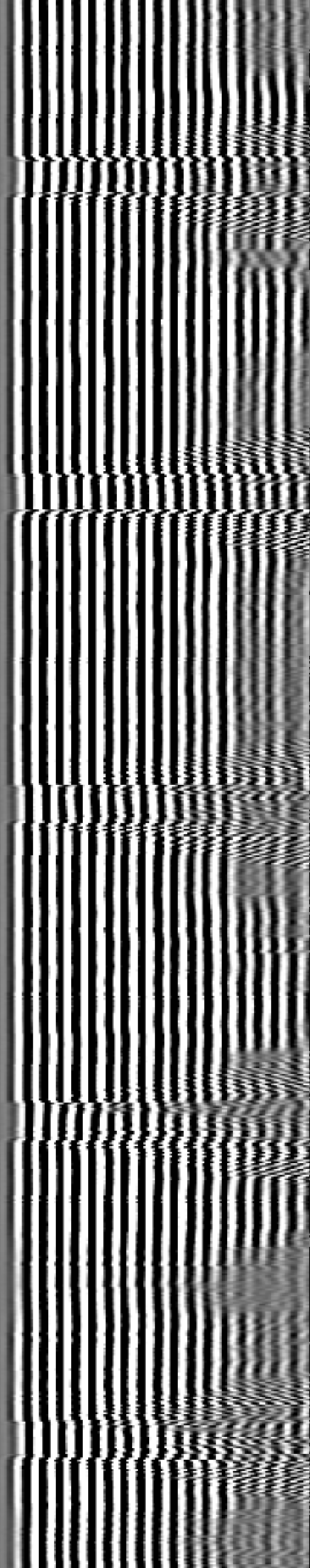
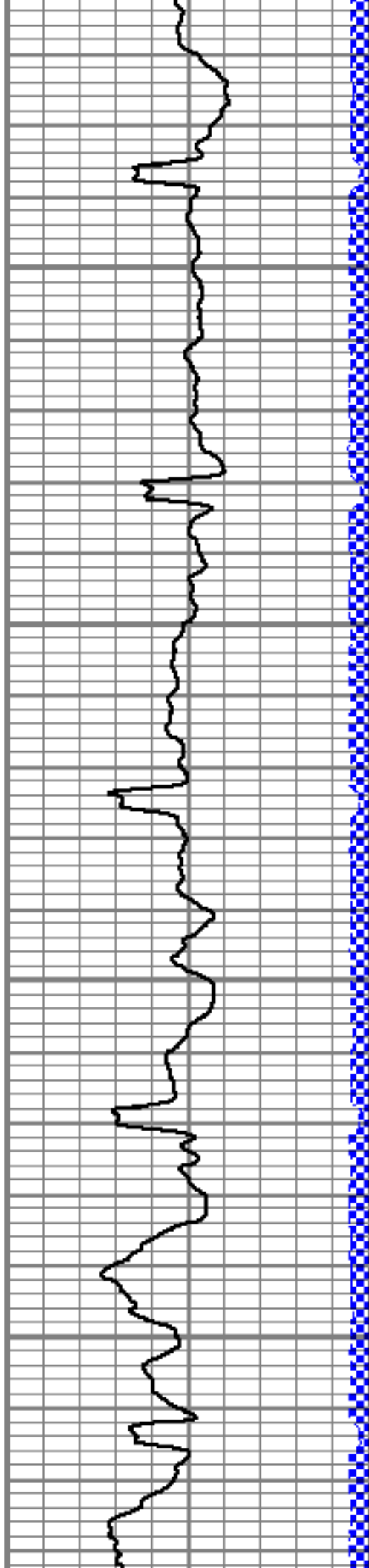


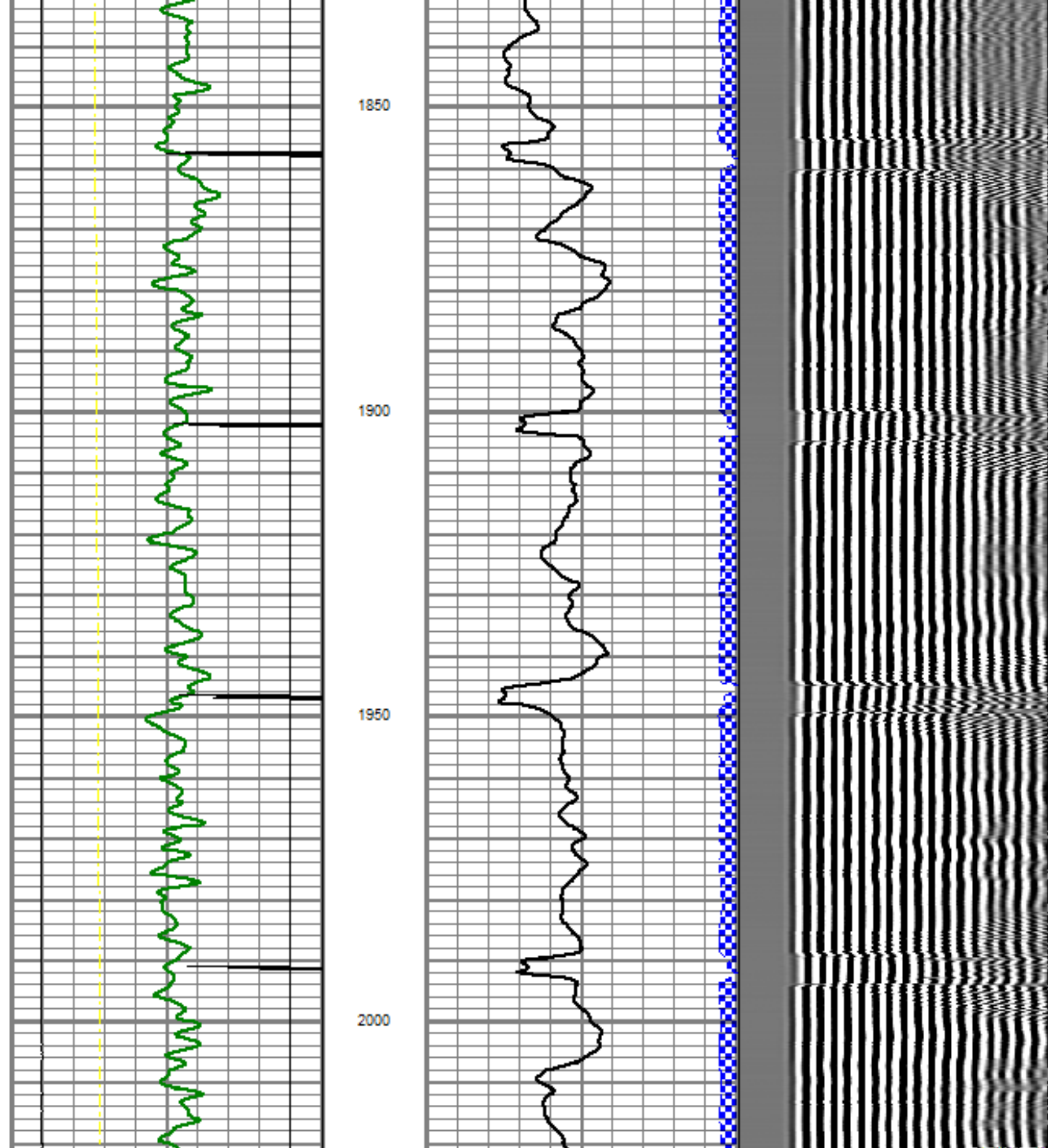
1650

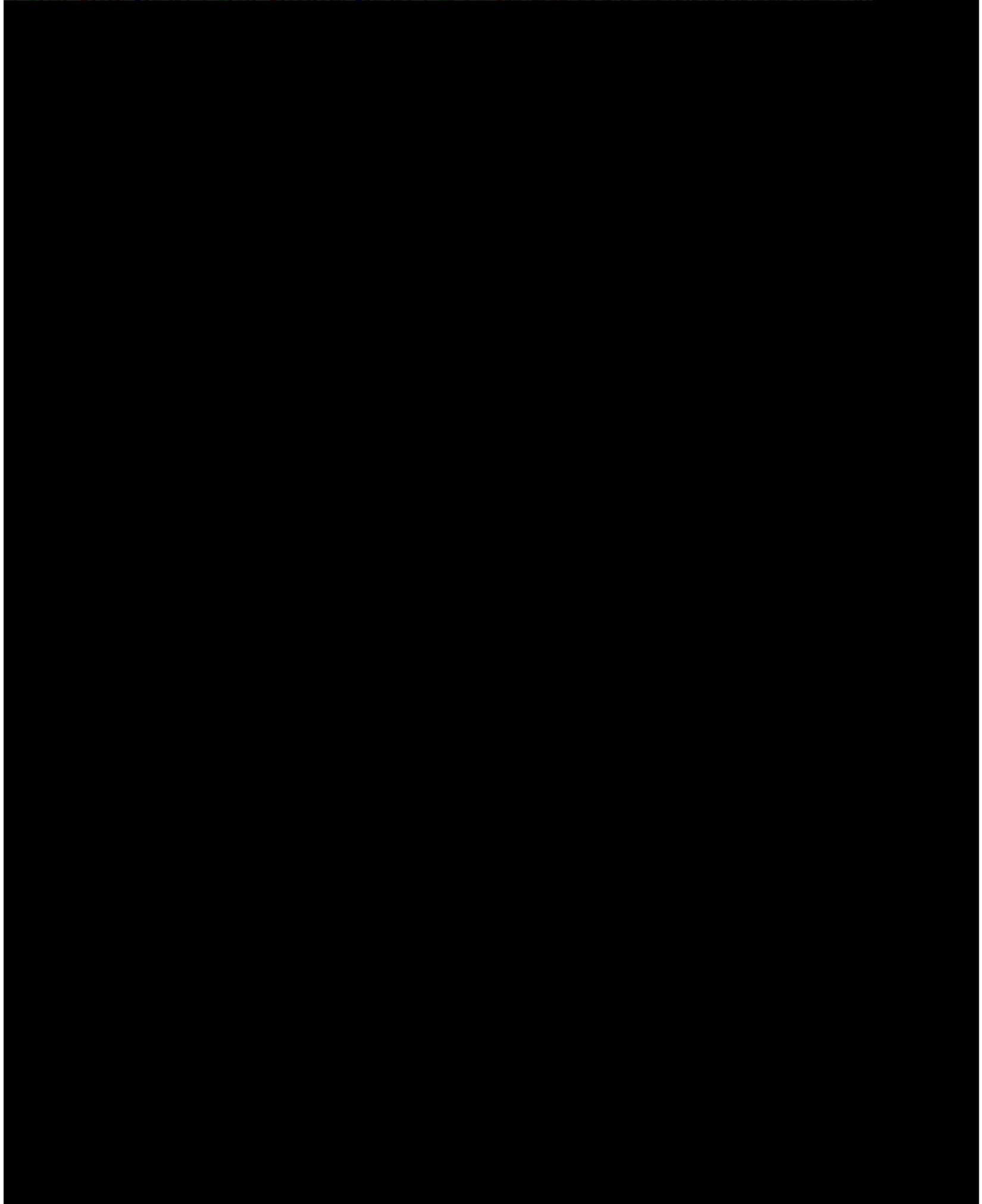
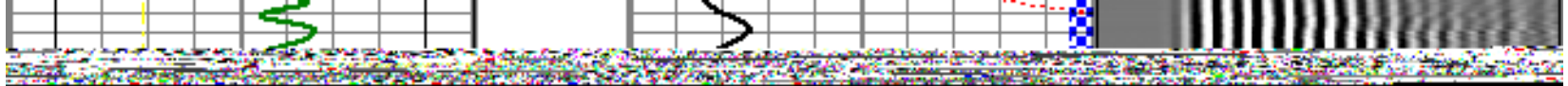
1700

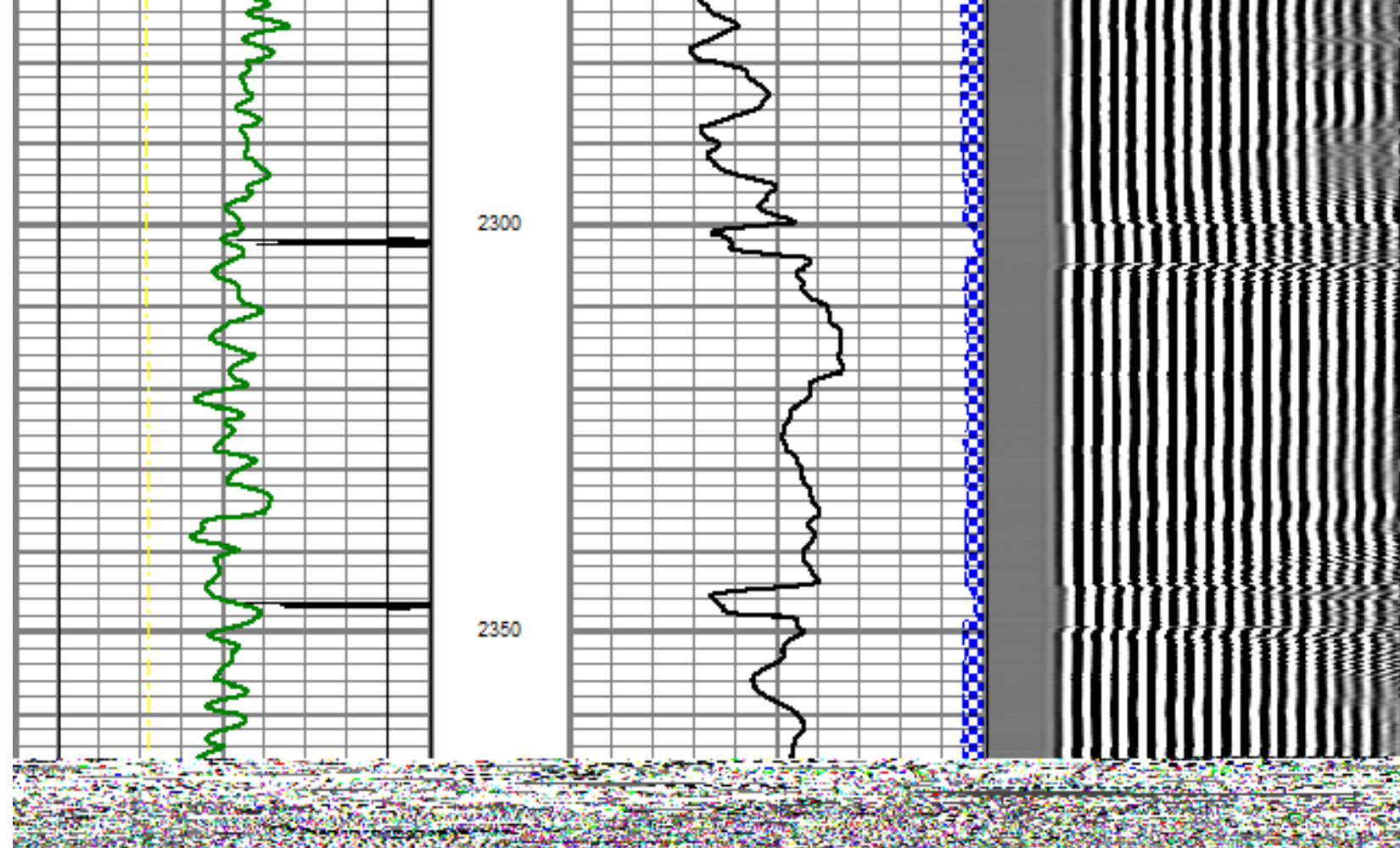
1750

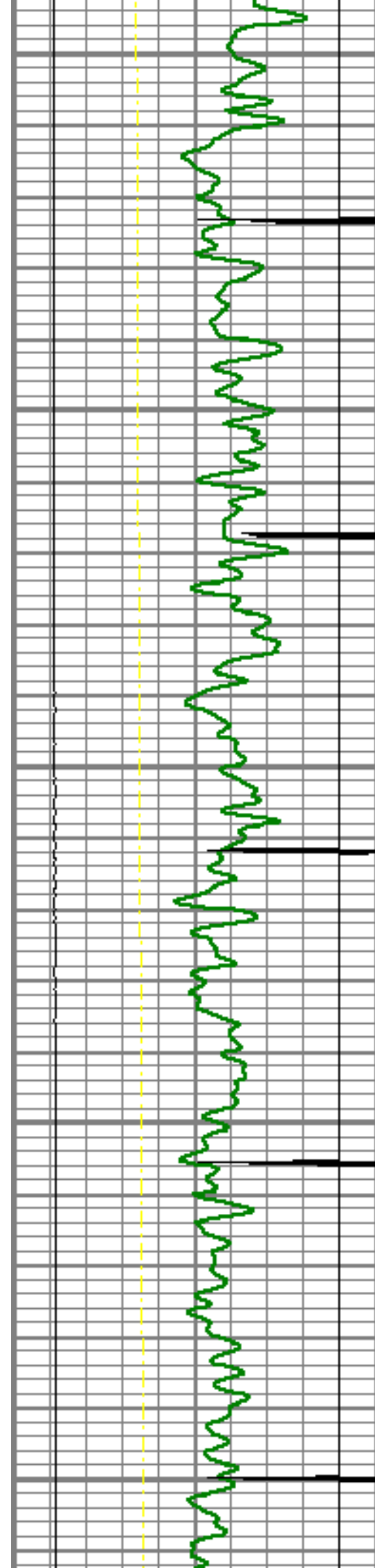
1800











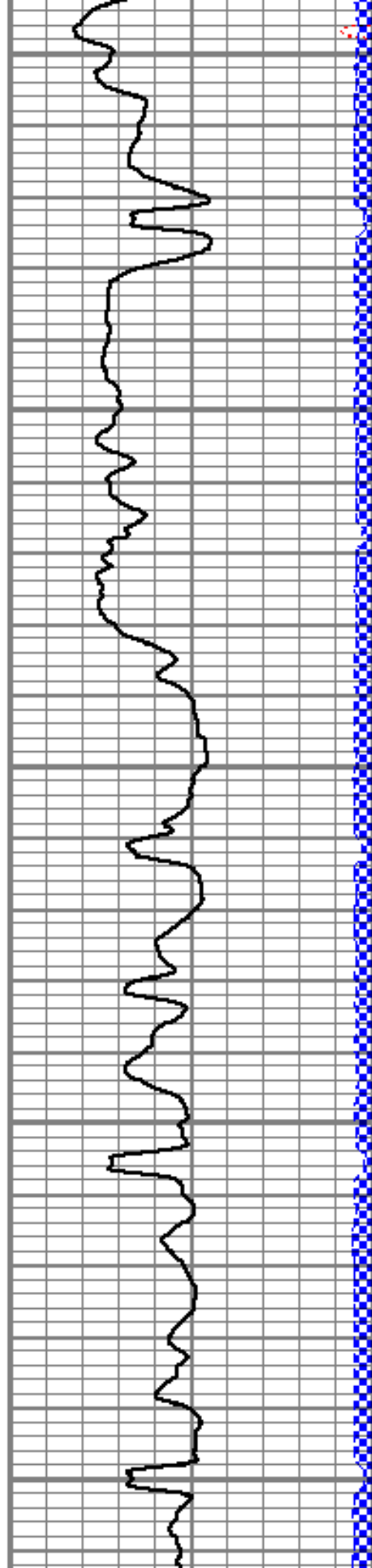
2500

2550

2600

2650

2700



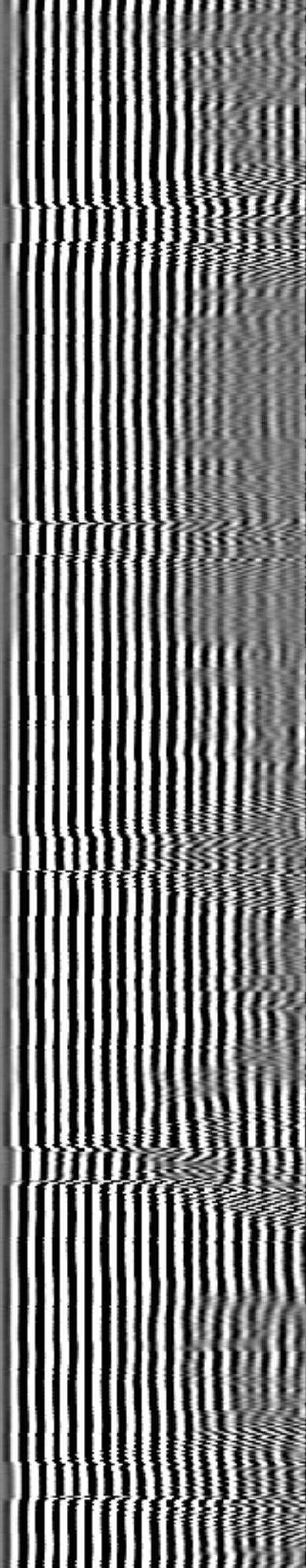
2500

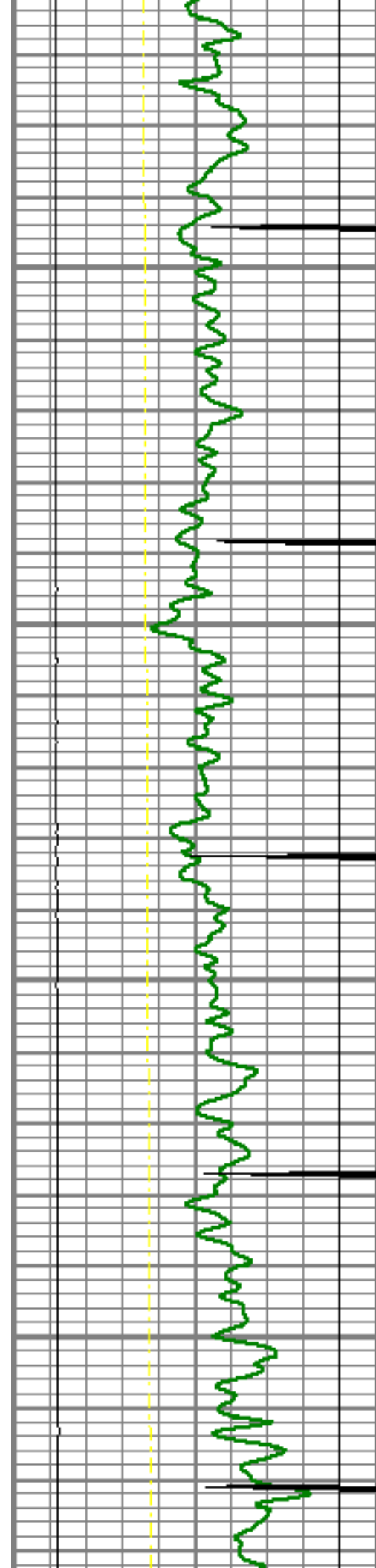
2550

2600

2650

2700



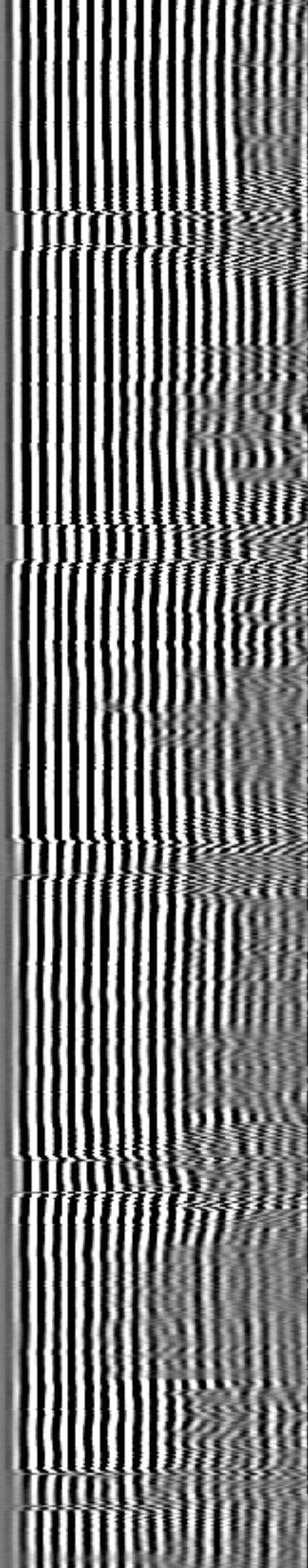
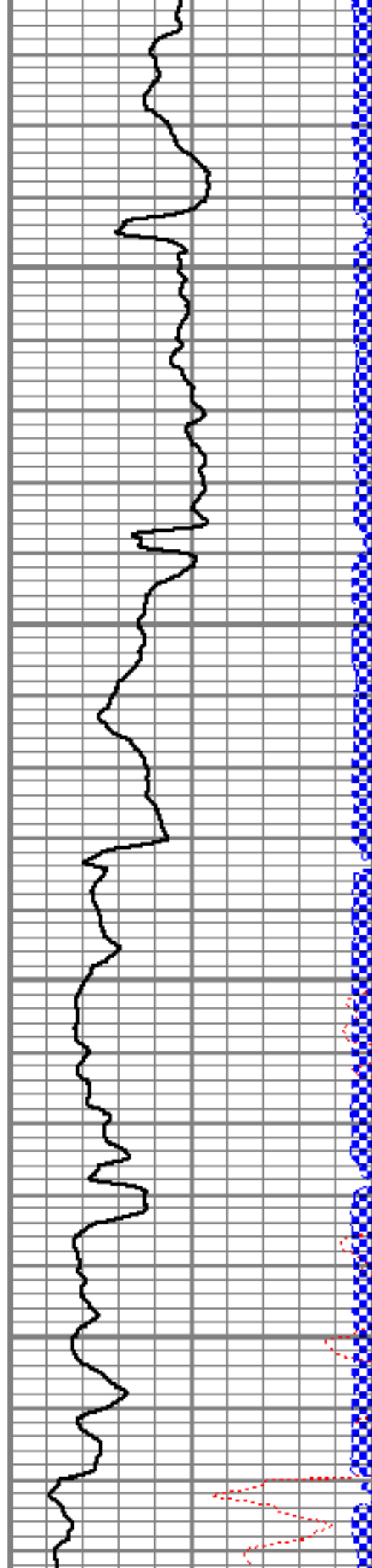


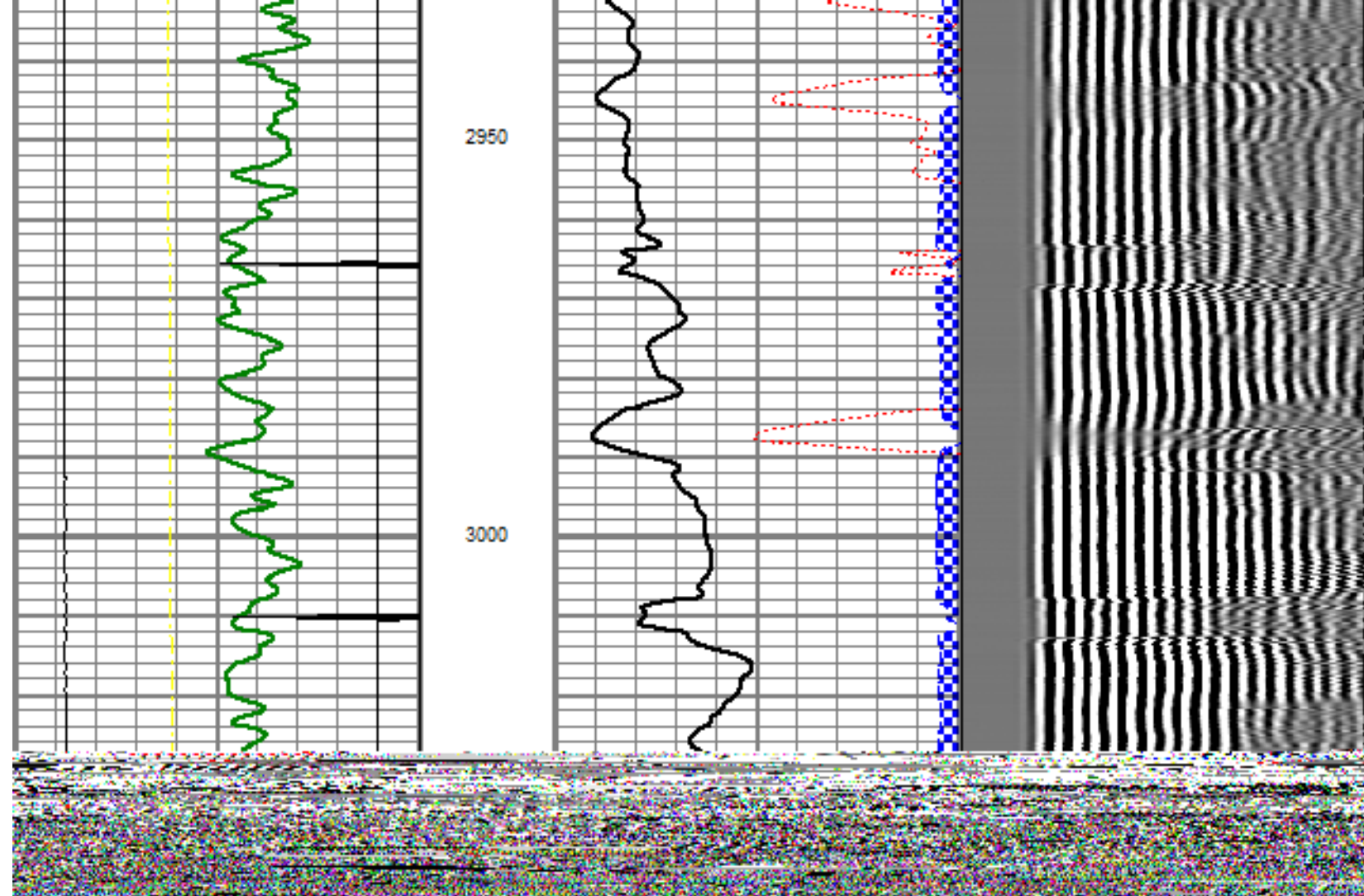
2750

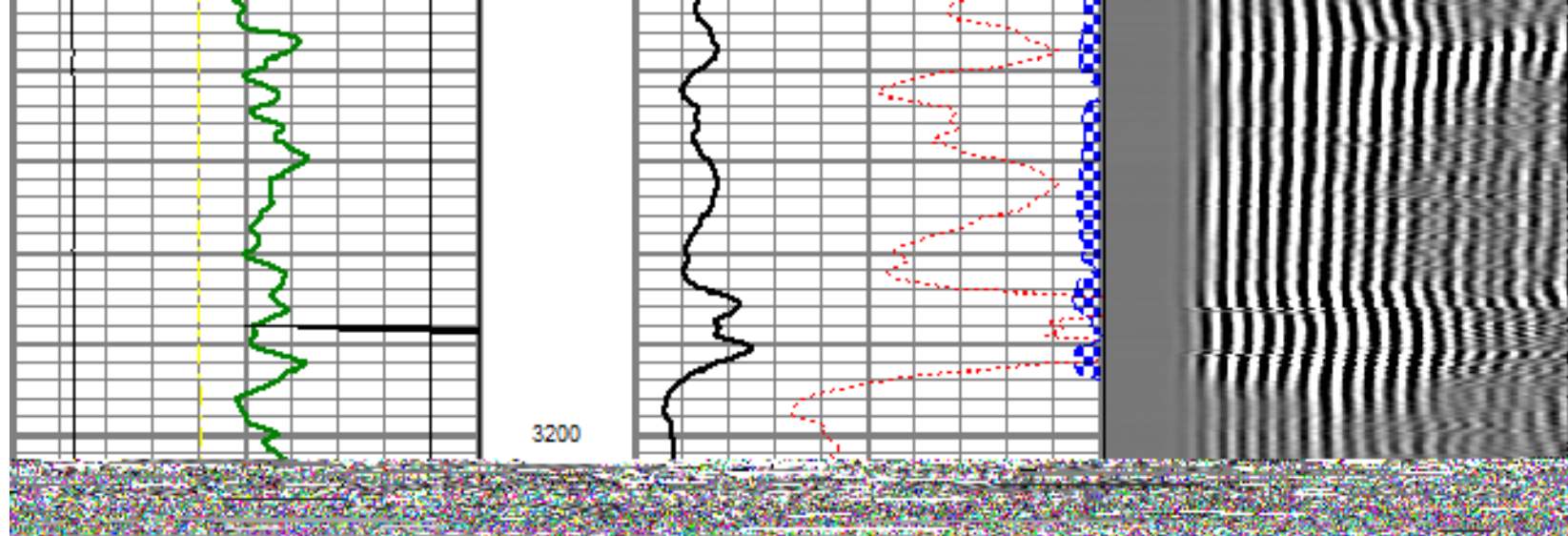
2800

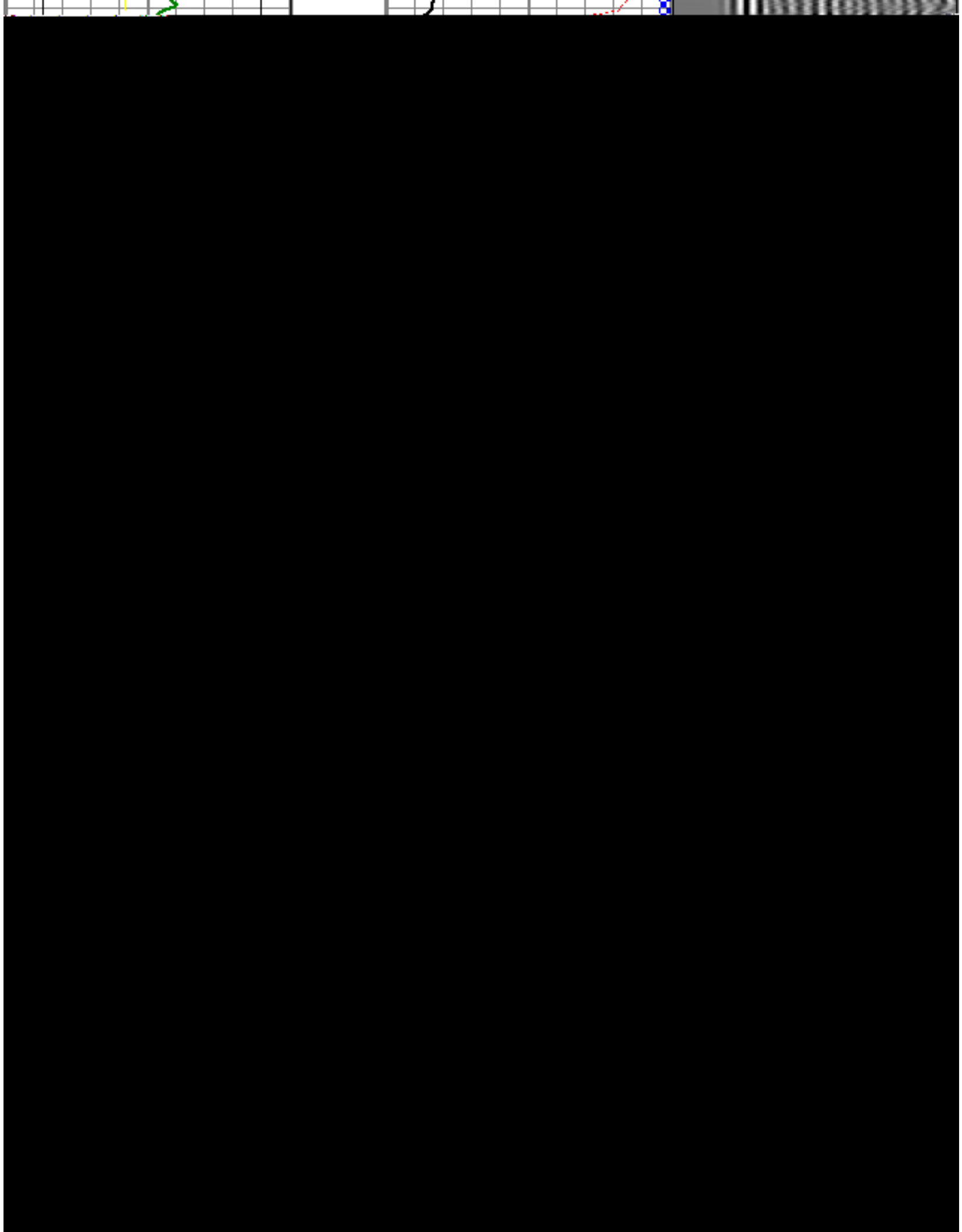
2850

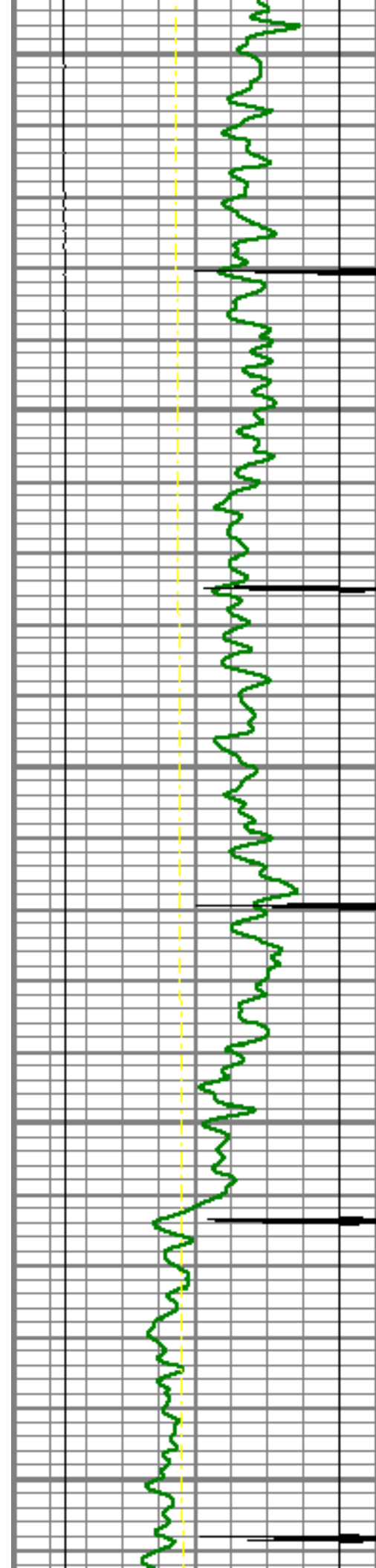
2900











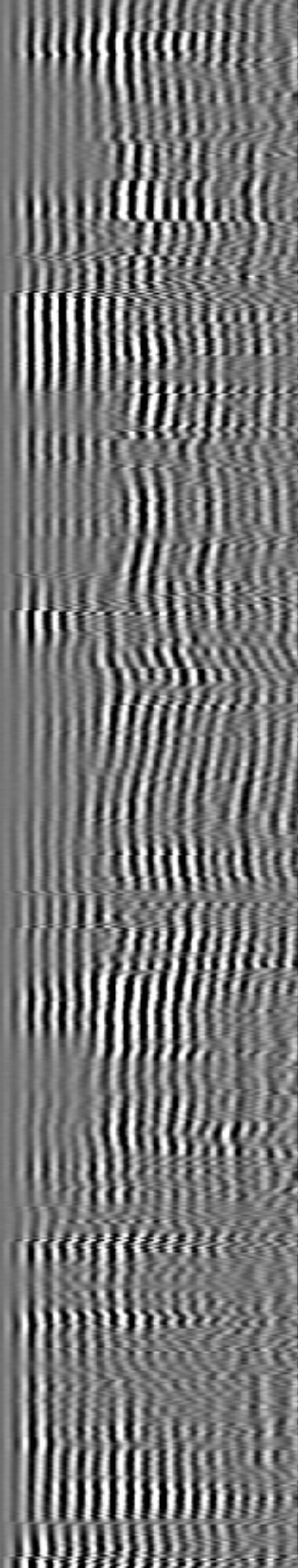
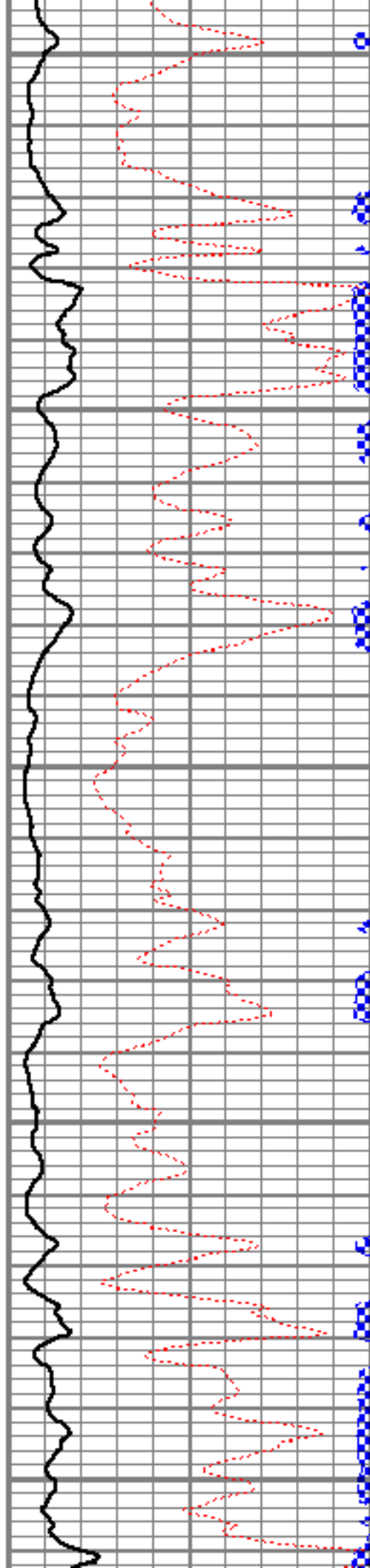
3600

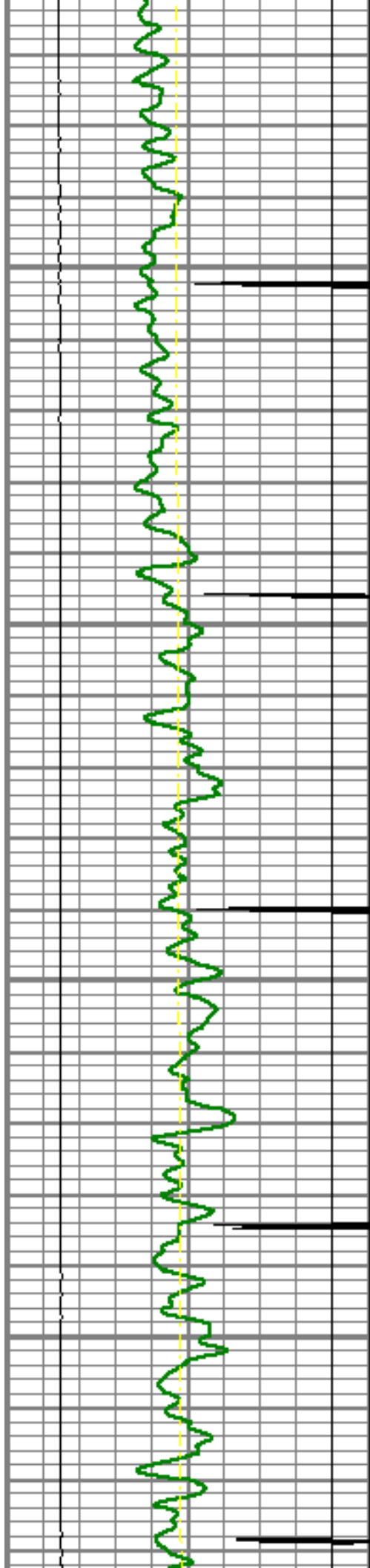
3650

3700

3750

3800



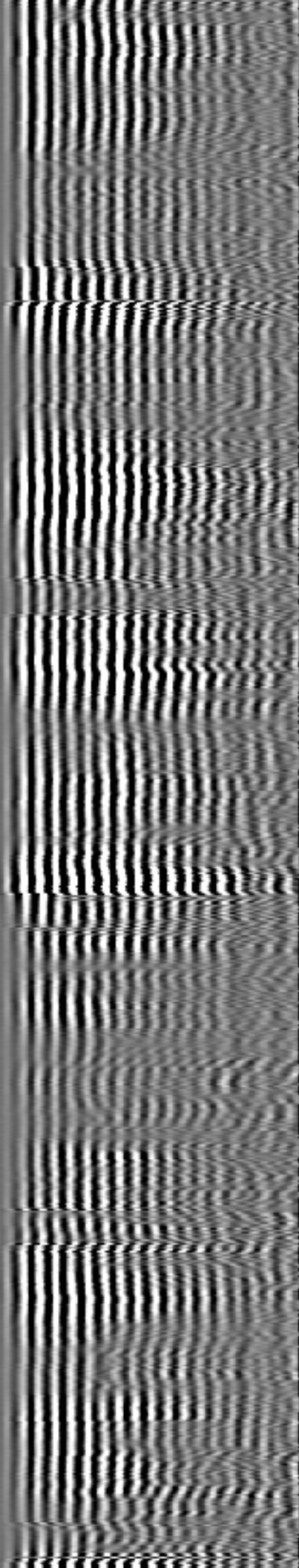
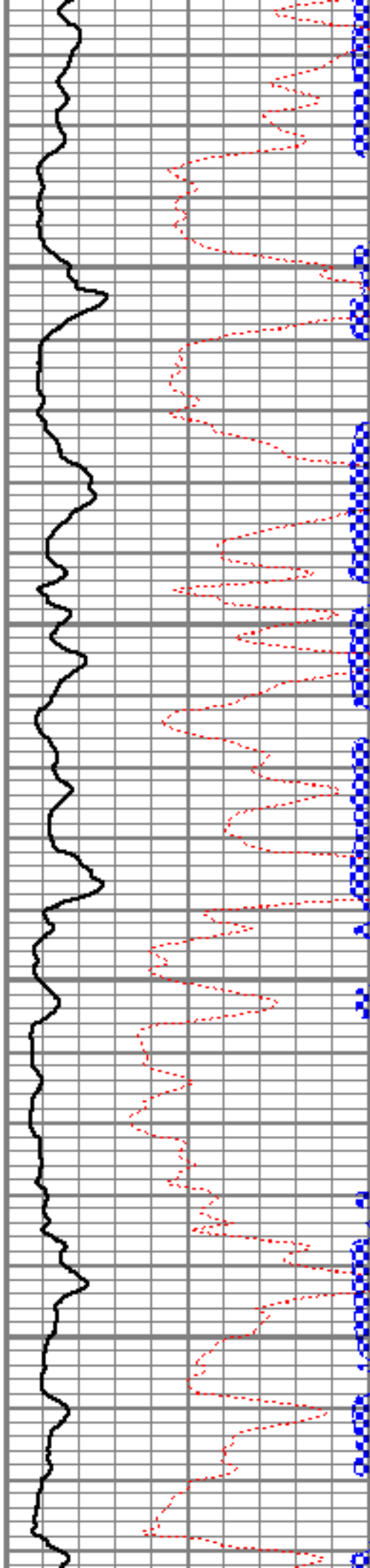


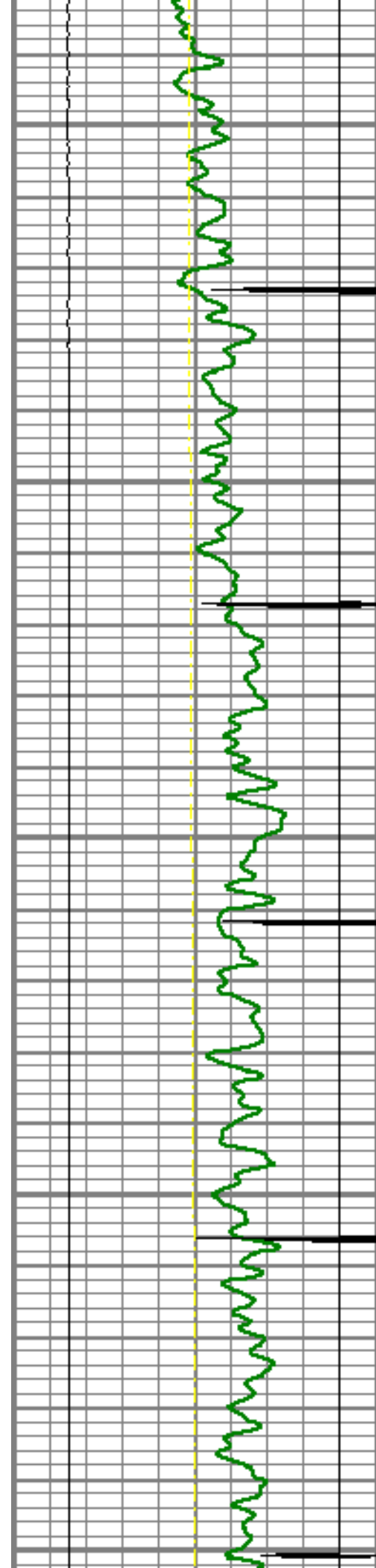
3850

3900

3950

4000





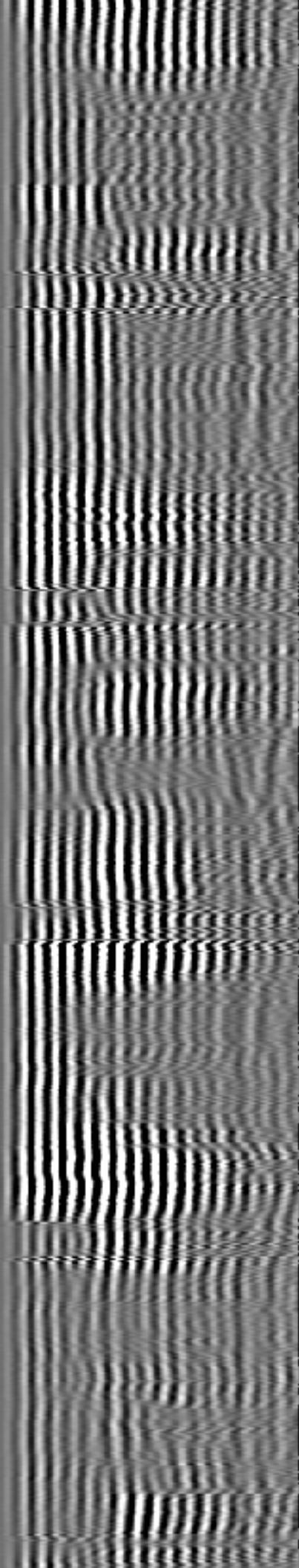
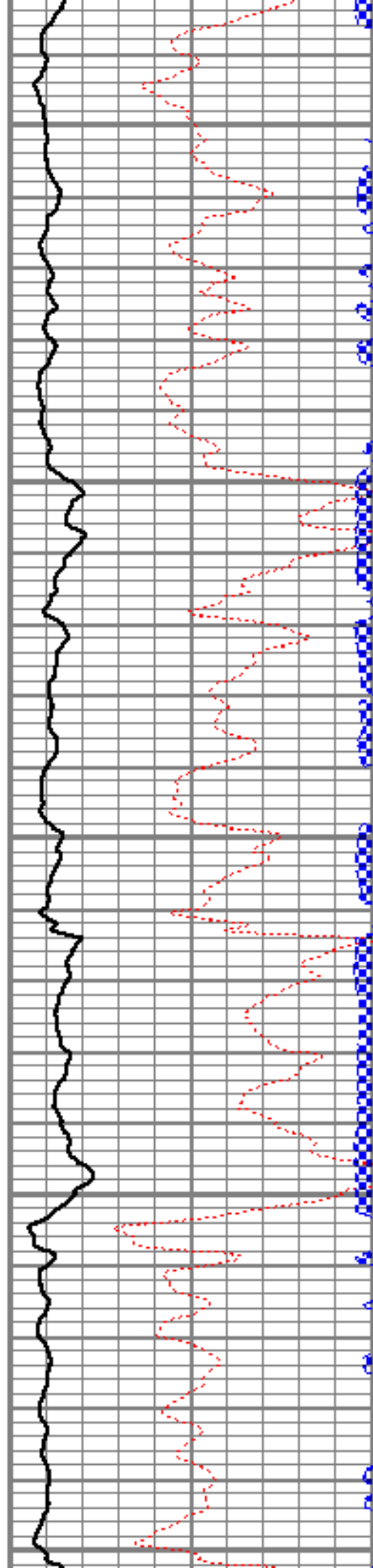
4050

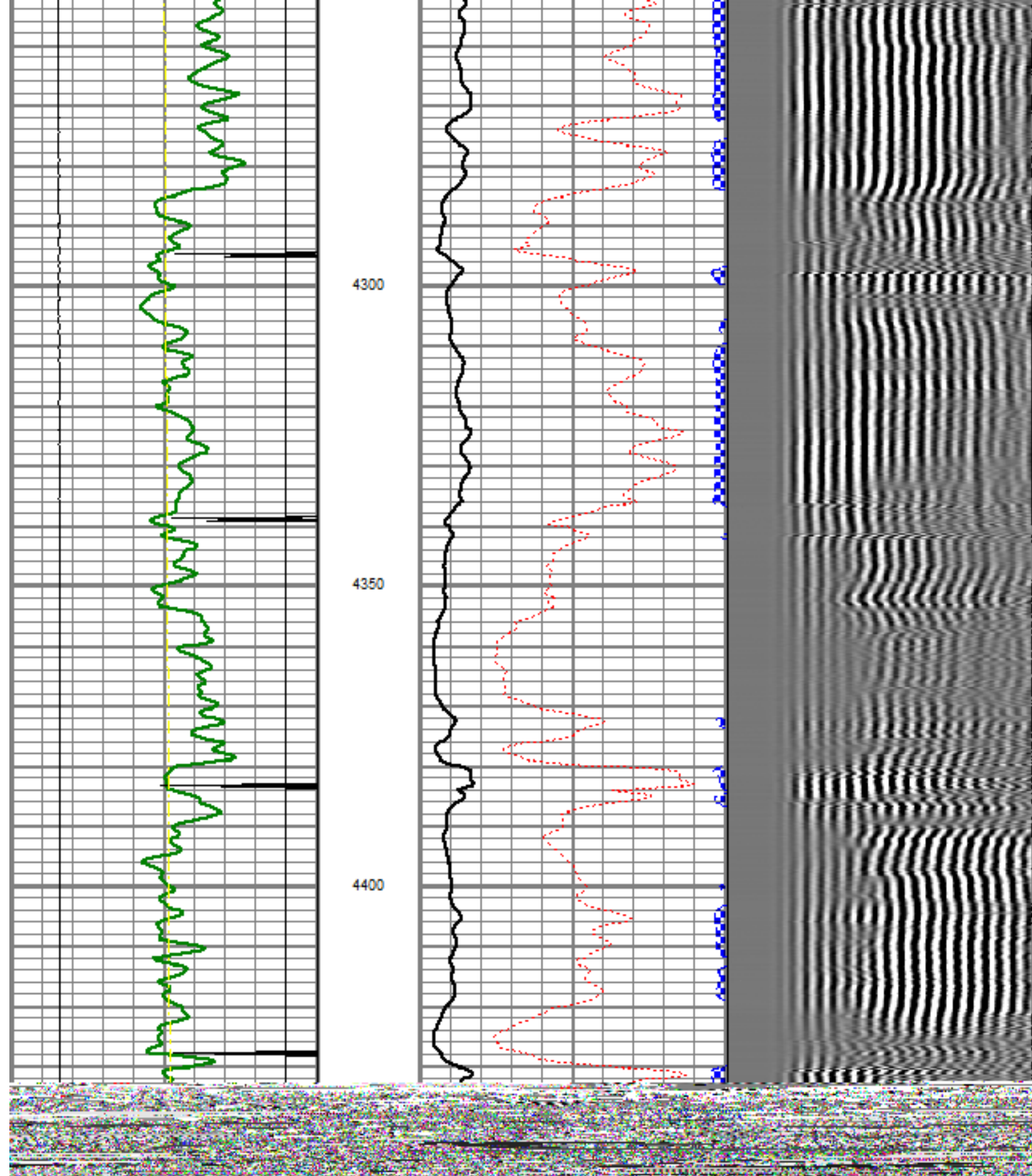
4100

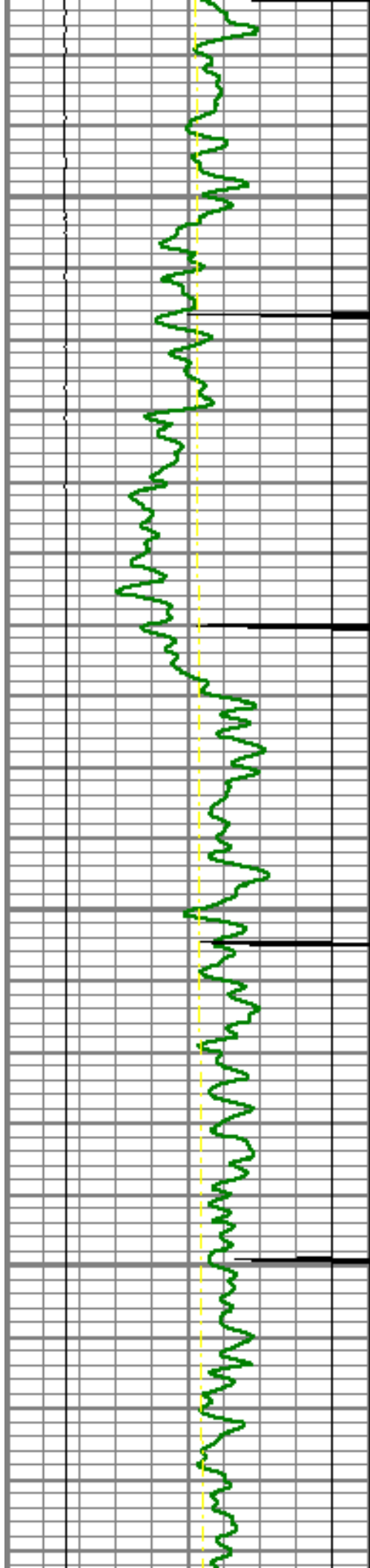
4150

4200

4250





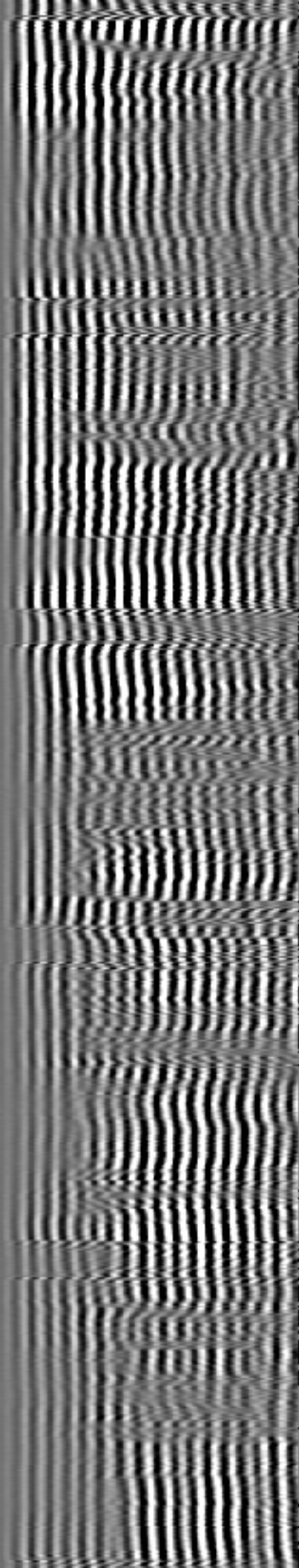
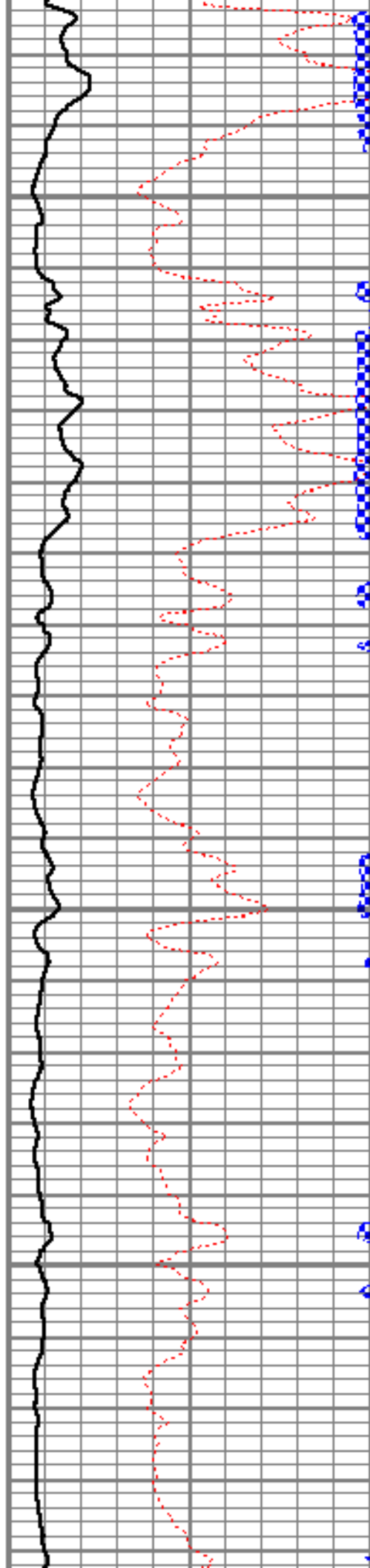


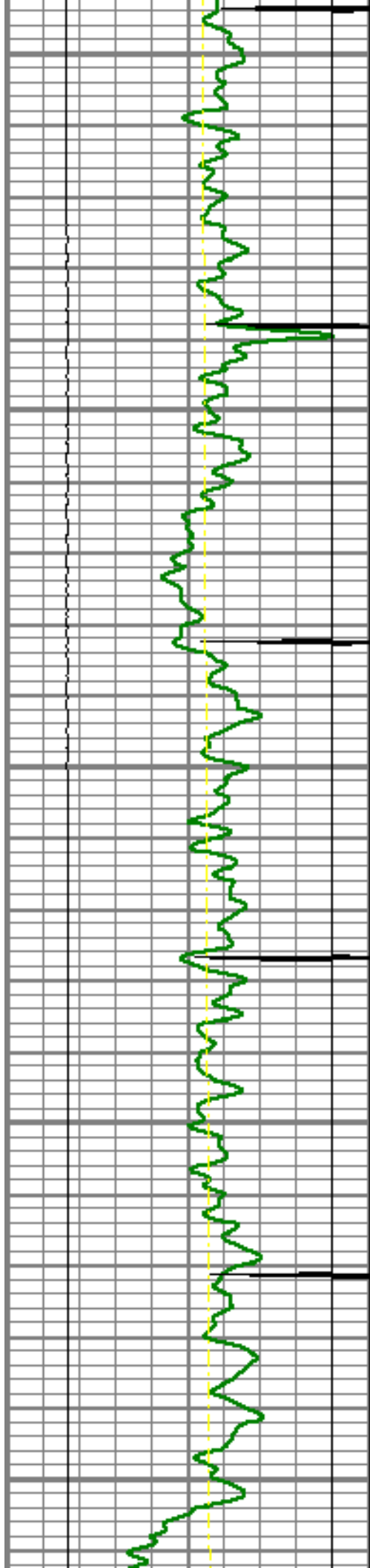
4500

4550

4600

4650





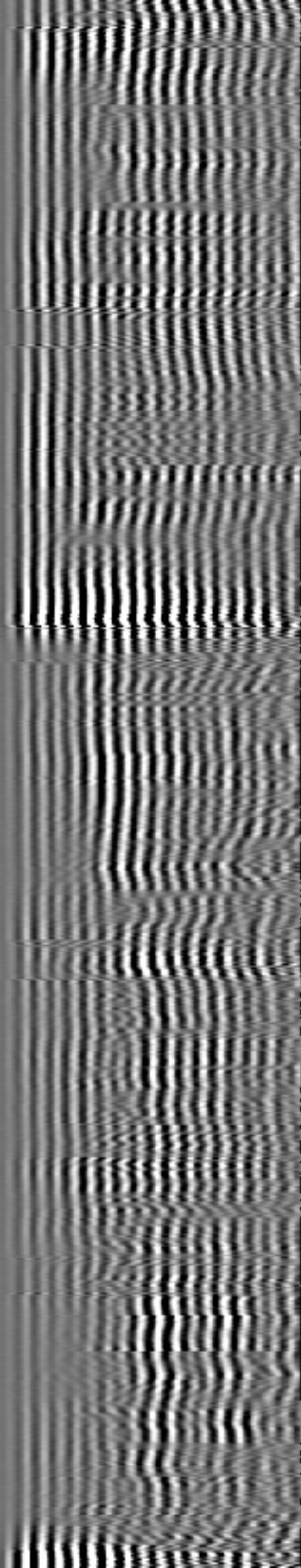
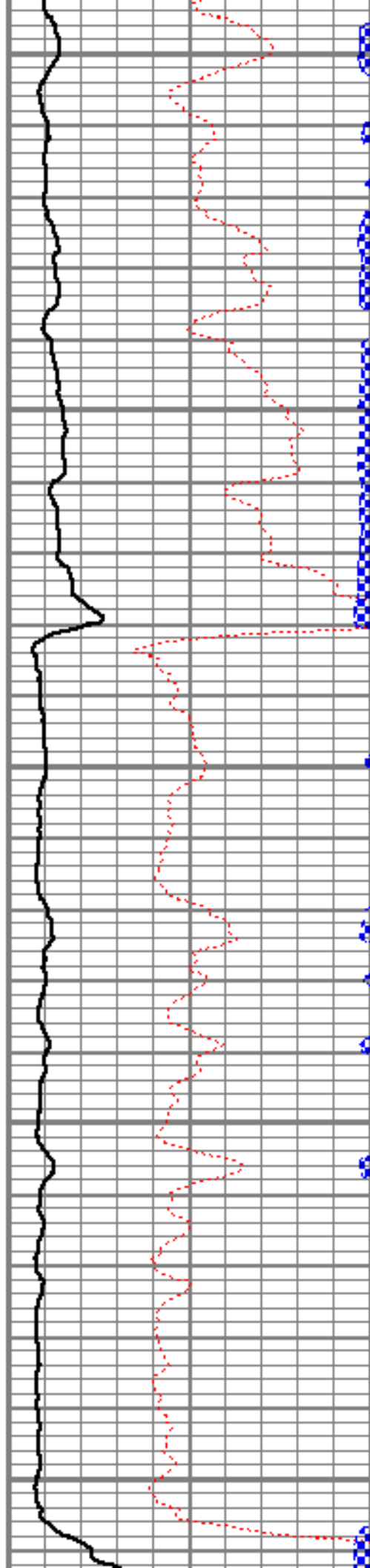
4700

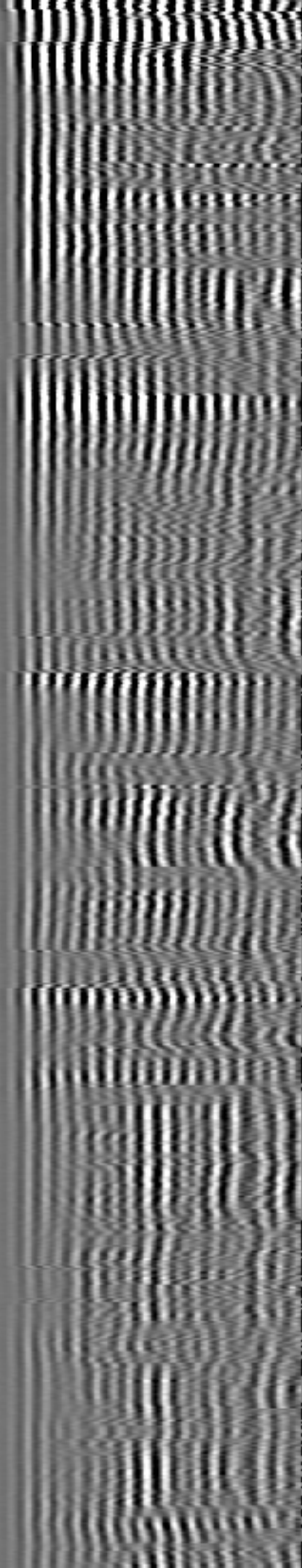
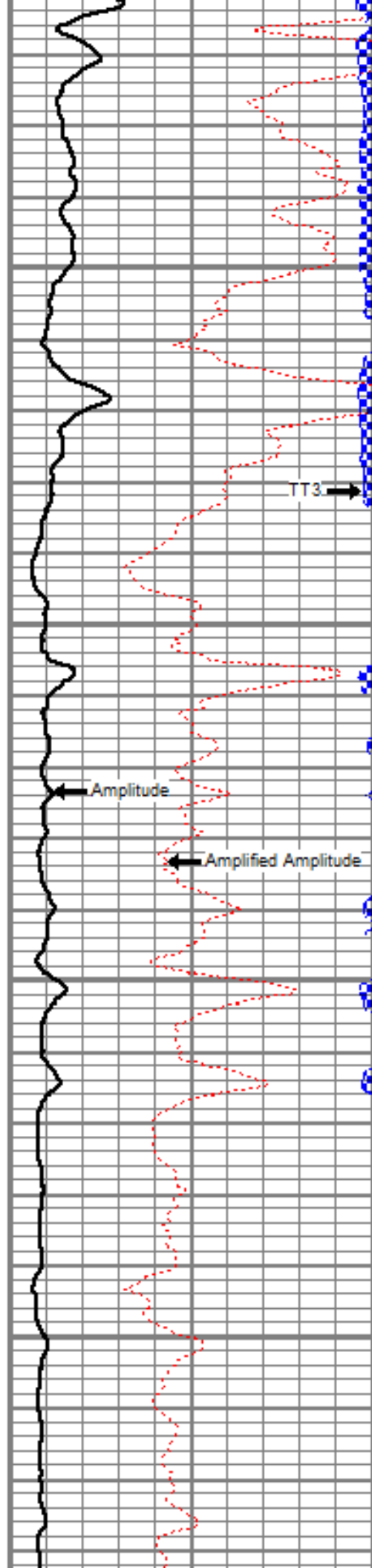
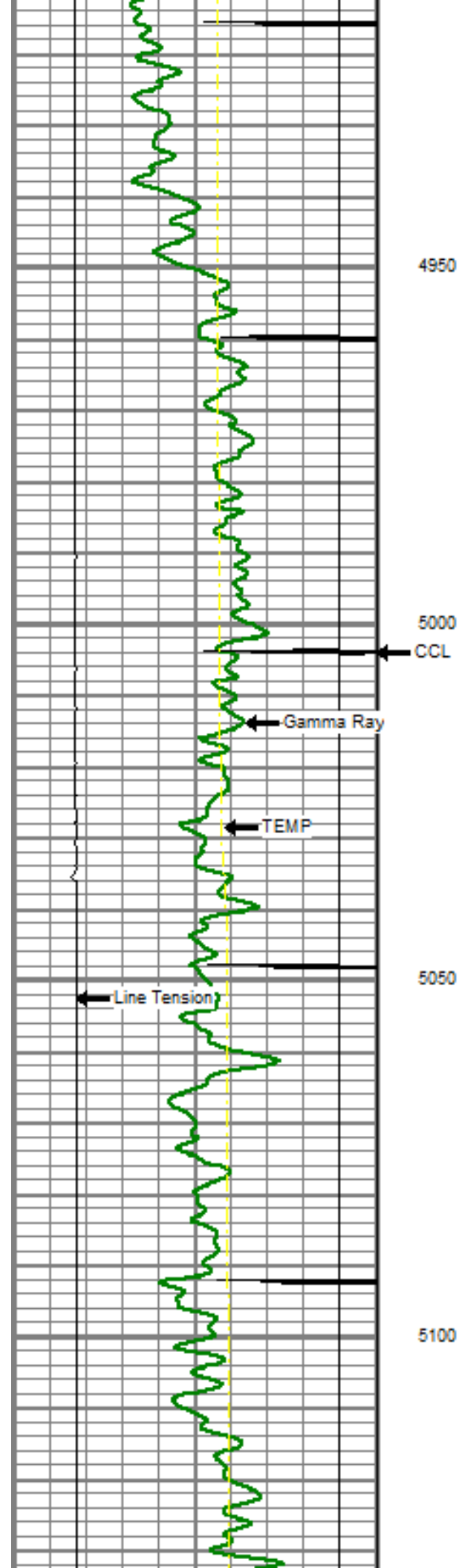
4750

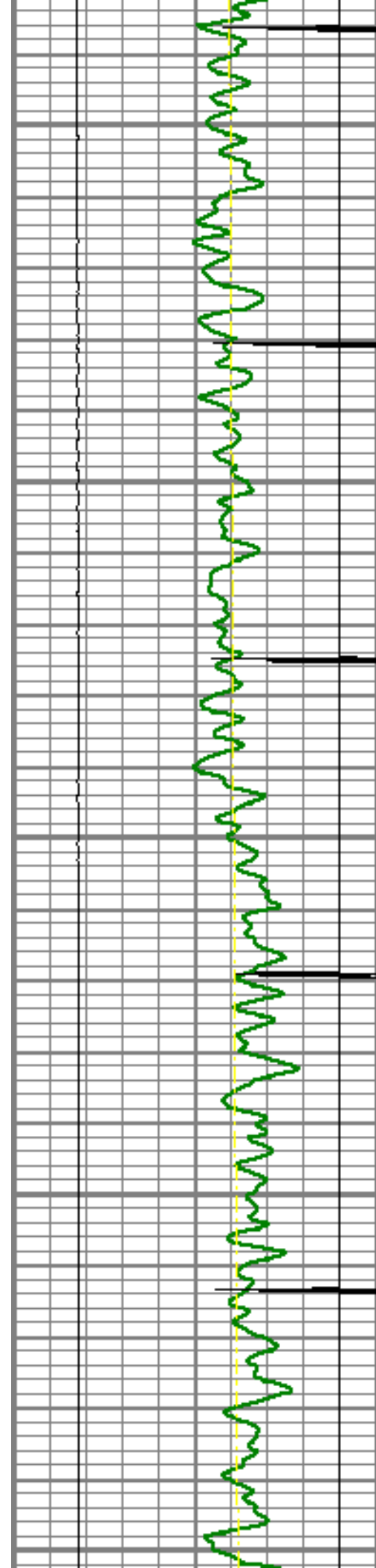
4800

4850

4900







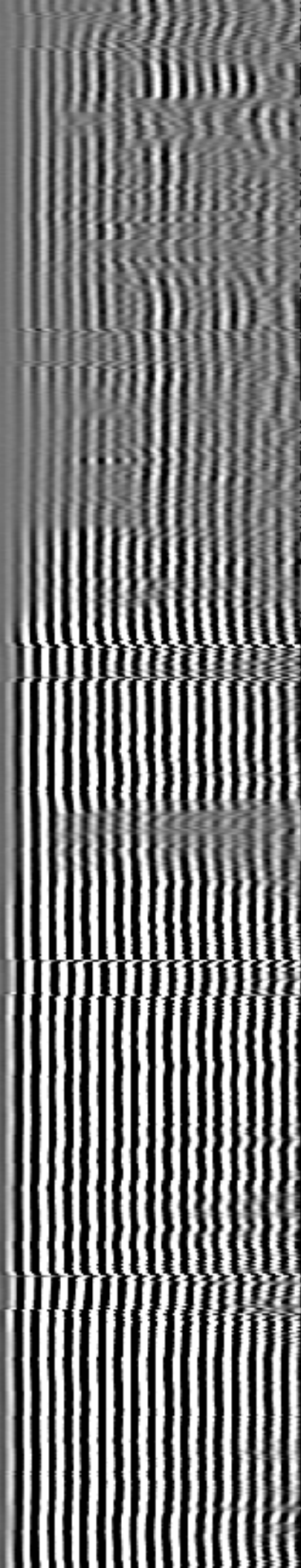
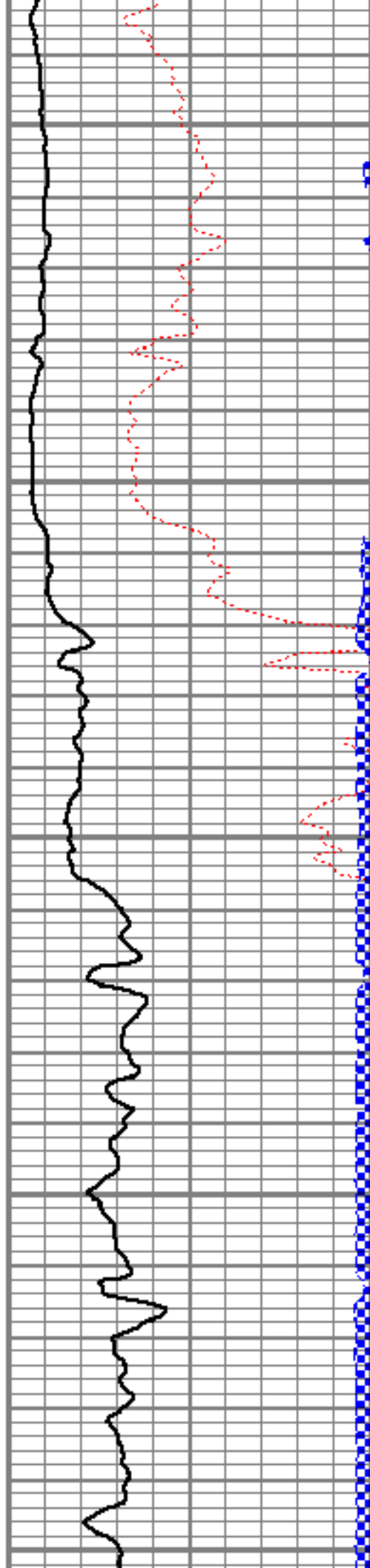
5150

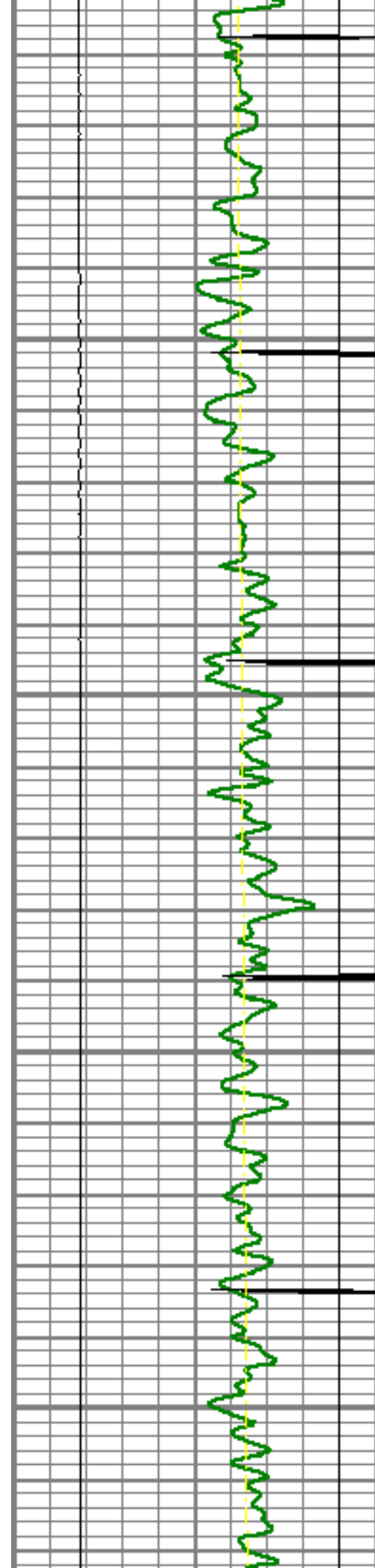
5200

5250

5300

5350



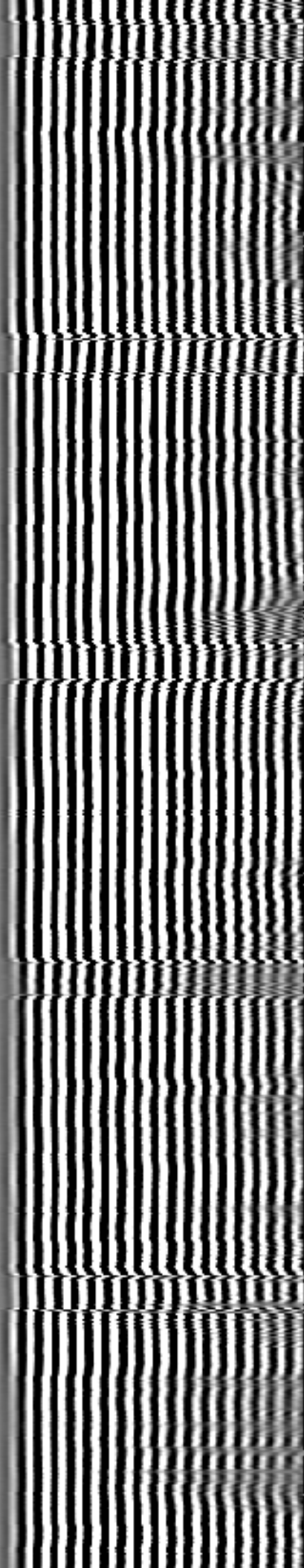
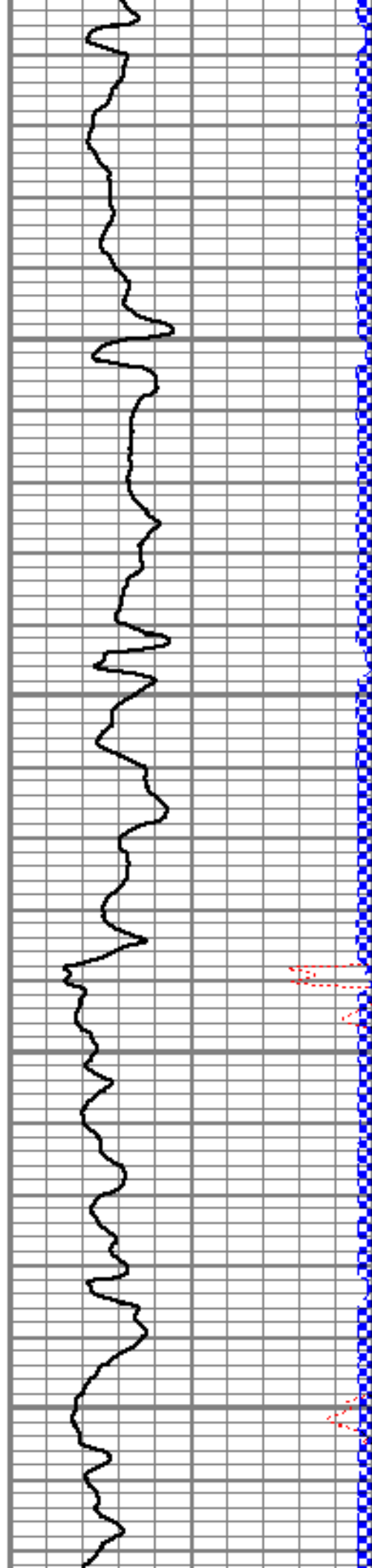


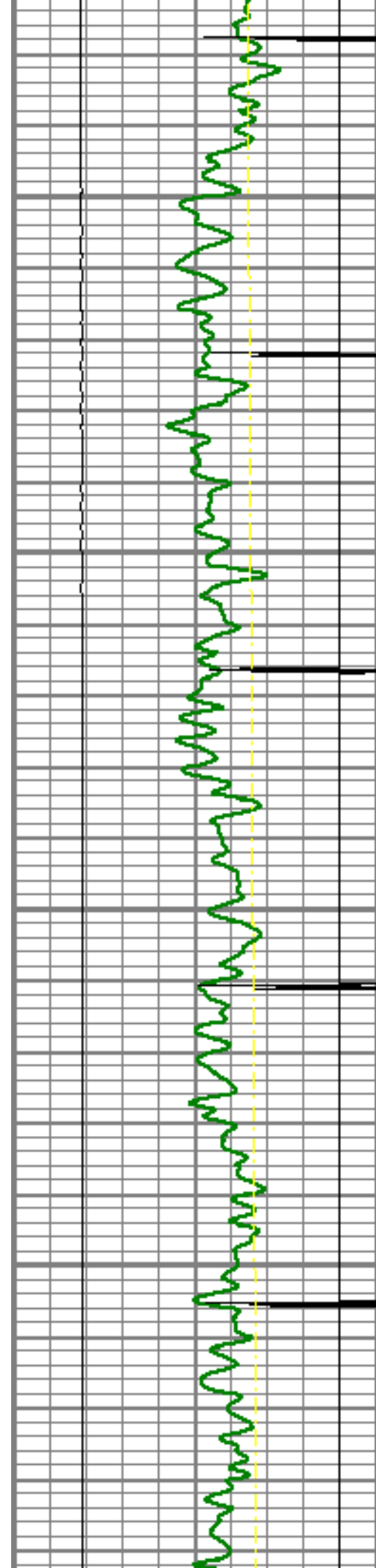
5400

5450

5500

5550



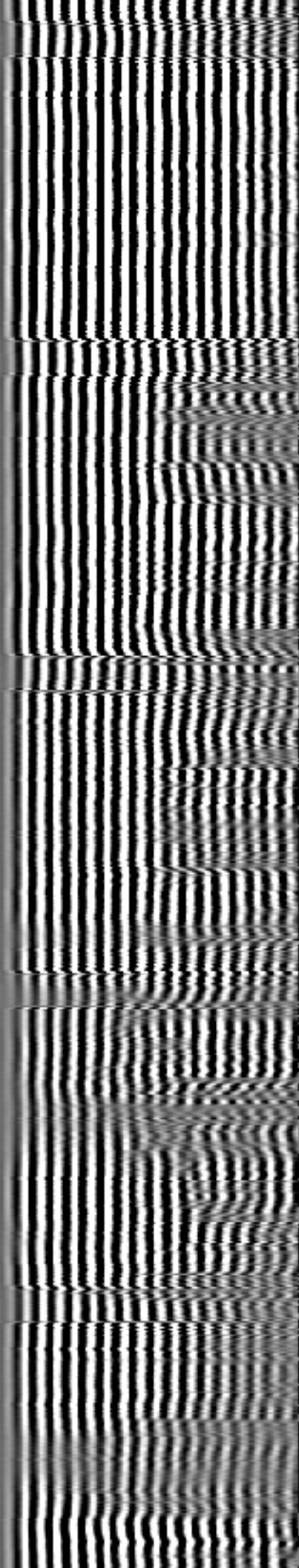
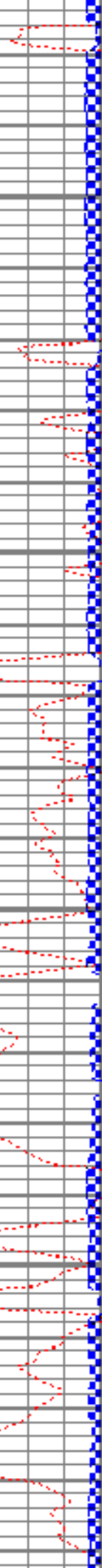
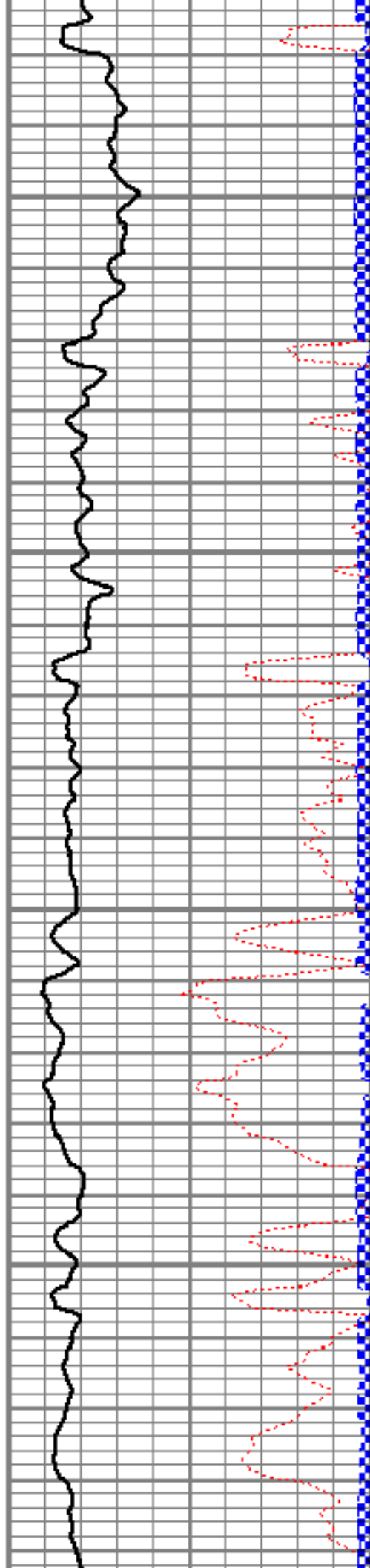


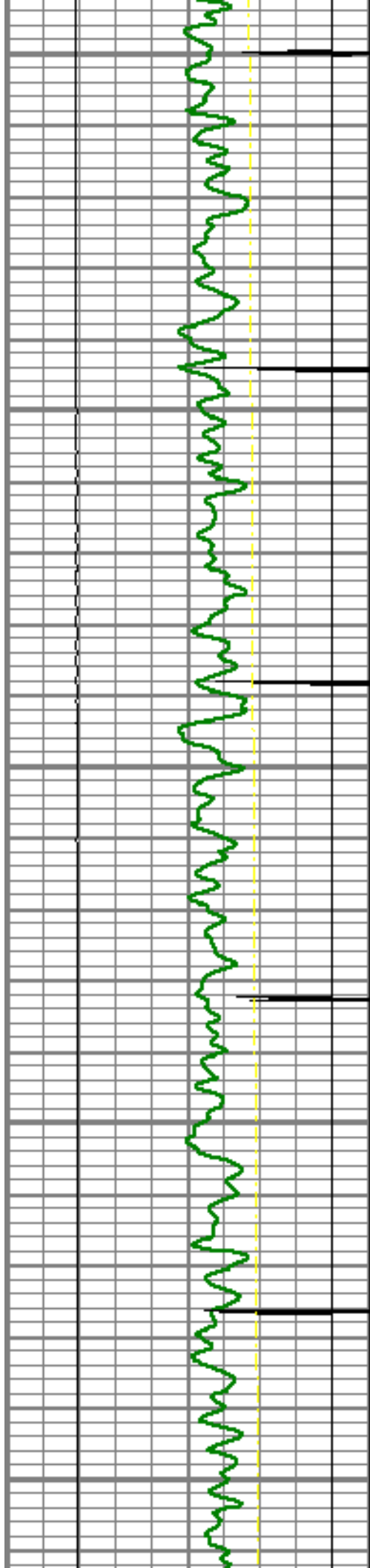
5600

5650

5700

5750





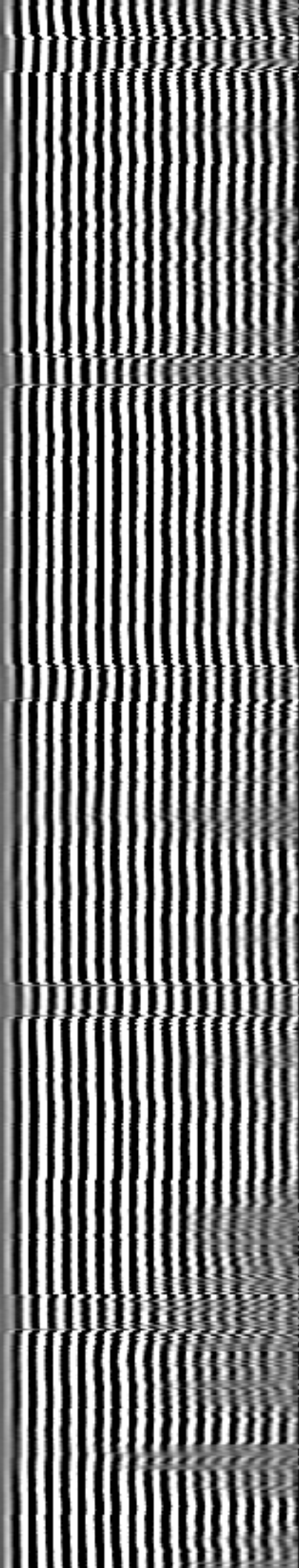
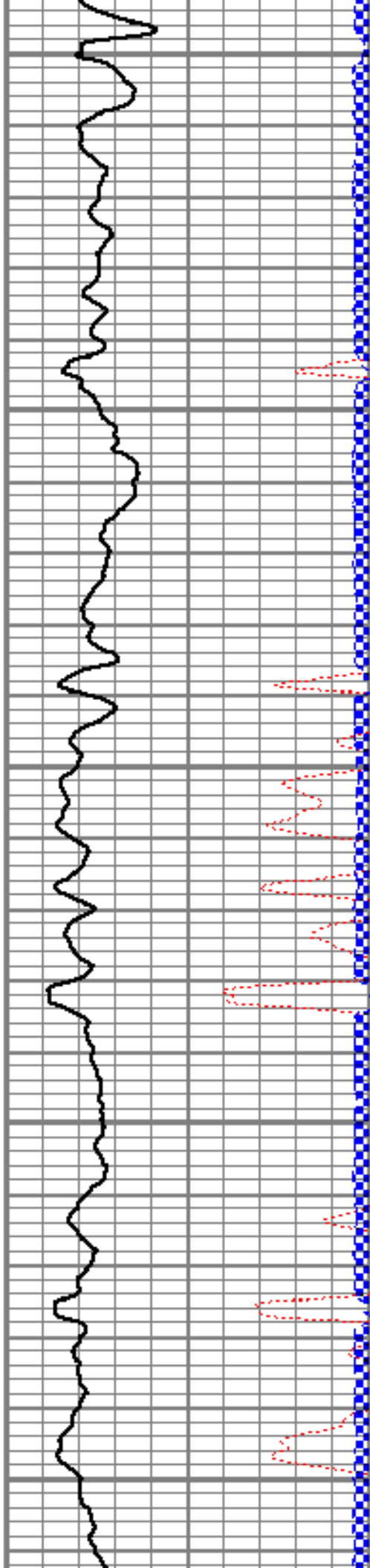
5800

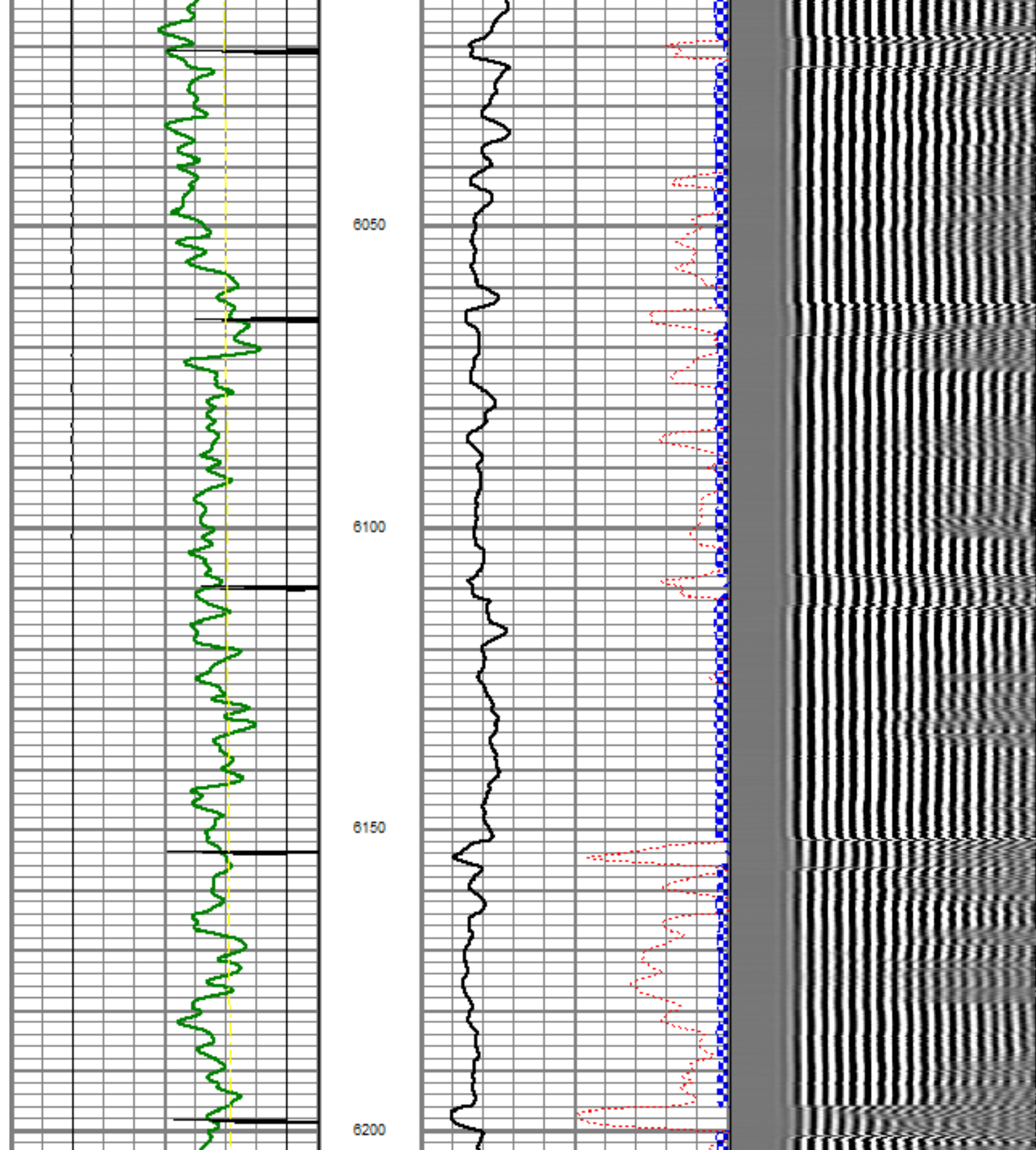
5850

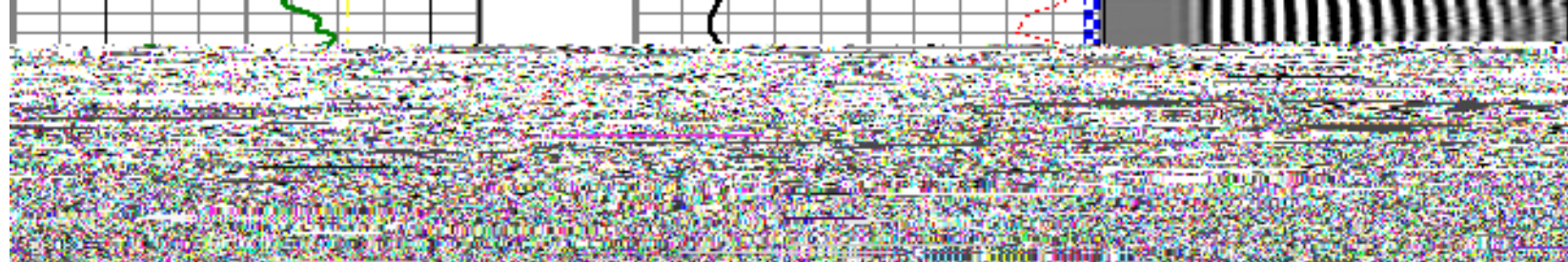
5900

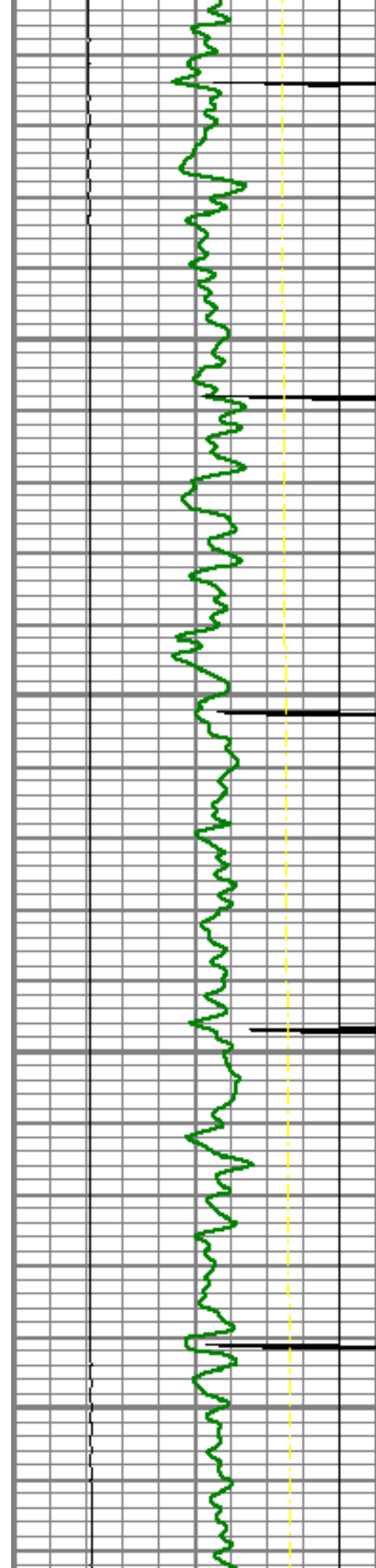
5950

6000









6500

6550

6600

6650

