

HALLIBURTON

WILLIAMS PRODUCTION RMT INC - EBUS

**GM 513-23
GRAND VALLEY
Garfield County , Colorado**

Cement Surface Casing **16-Aug-2011**

Job Site Documents

The Road to Excellence Starts with Safety

Sold To #: 300721	Ship To #: 2869988	Quote #:	Sales Order #: 8370253
Customer: WILLIAMS PRODUCTION RMT INC - EBUS	Customer Rep: HARTL, AL		
Well Name: GM	Well #: 513-23	API/UWI #: 05-045-20481	
Field: GRAND VALLEY	City (SAP): PARACHUTE	County/Parish: Garfield	State: Colorado
Lat: N 39.506 deg. OR N 39 deg. 30 min. 22.601 secs.	Long: W 108.083 deg. OR W -109 deg. 55 min. 0.638 secs.		
Contractor: NABORS	Rig/Platform Name/Num: NABORS 576		
Job Purpose: Cement Surface Casing			
Well Type: Development Well	Job Type: Cement Surface Casing		
Sales Person: MAYO, MARK	Srvc Supervisor: SMITH, CHRISTOPHER	MBU ID Emp #: 452619	

Job Personnel

HES Emp Name	Exp Hrs	Emp #	HES Emp Name	Exp Hrs	Emp #	HES Emp Name	Exp Hrs	Emp #
HAYES, JESSE Doug	5	403601	LEIST, JAMES R	5	362787	SMITH, CHRISTOPHER Scott	5	452619
WALPOLE, DARREN Livingston	5	485294						

Equipment

HES Unit #	Distance-1 way	HES Unit #	Distance-1 way	HES Unit #	Distance-1 way	HES Unit #	Distance-1 way
10551730C	60 mile	10722398	60 mile	10973571	60 mile	11139330	60 mile
11259882	60 mile						

Job Hours

Date	On Location Hours	Operating Hours	Date	On Location Hours	Operating Hours	Date	On Location Hours	Operating Hours
08.16.2011	5	1						
TOTAL			Total is the sum of each column separately					

Job

Job Times

Formation Name	Top	Bottom	Called Out	Date	Time	Time Zone
Formation Depth (MD)	0	775	On Location	16 - Aug - 2011	06:00	MST
Form Type	BHST		Job Started	16 - Aug - 2011	10:00	MST
Job depth MD	758.9 ft	Job Depth TVD	Job Completed	16 - Aug - 2011	13:19	MST
Water Depth		Wk Ht Above Floor	Departed Loc	16 - Aug - 2011	14:11	MST
Perforation Depth (MD)	From	To		16 - Aug - 2011	15:30	MST

Well Data

Description	New / Used	Max pressure psig	Size in	ID in	Weight lbm/ft	Thread	Grade	Top MD ft	Bottom MD ft	Top TVD ft	Bottom TVD ft
-------------	------------	-------------------	---------	-------	---------------	--------	-------	-----------	--------------	------------	---------------

Sales/Rental/3rd Party (HES)

Description	Qty	Qty uom	Depth	Supplier
PLUG,CMTG,TOP,9 5/8,HWE,8.16 MIN/9.06 MA	1	EA		

Tools and Accessories

Type	Size	Qty	Make	Depth	Type	Size	Qty	Make	Depth	Type	Size	Qty	Make
Guide Shoe					Packer					Top Plug	9.625	1	HES
Float Shoe					Bridge Plug					Bottom Plug			
Float Collar					Retainer					SSR plug set			
Insert Float										Plug Container	9.625	1	HES
Stage Tool										Centralizers			

Miscellaneous Materials

Gelling Agt	Conc	Surfactant	Conc	Acid Type	Qty	Conc	%
Treatment Fld	Conc	Inhibitor	Conc	Sand Type	Size	Qty	

Fluid Data

Stage/Plug #: 1	Fluid #	Stage Type	Fluid Name	Qty	Qty uom	Mixing Density lbm/gal	Yield ft ³ /sk	Mix Fluid Gal/sk	Rate bbl/min	Total Mix Fluid Gal/sk
-----------------	---------	------------	------------	-----	---------	------------------------	---------------------------	------------------	--------------	------------------------

HALLIBURTON***Cementing Job Summary***

1	Water Spacer		20.00	bbl	8.34	.0	.0	4	
2	Tail Cement	VERSACEM (TM) SYSTEM (452010)	200.0	sacks	12.8	2.11	11.75	8	11.75
	11.75 Gal	FRESH WATER							
3	Displacement Fluid		56.00	bbl	8.34	.0	.0	10	
Calculated Values		Pressures		Volumes					
Displacement	56.3	Shut In: Instant		Lost Returns	0	Cement Slurry	75.2	Pad	
Top Of Cement		5 Min		Cement Returns	10	Actual Displacement	56.3	Treatment	
Frac Gradient		15 Min		Spacers	20	Load and Breakdown		Total Job	152
Rates									
Circulating	RIG	Mixing	8	Displacement	10	Avg. Job	9		
Cement Left In Pipe	Amount	43.8 ft	Reason	Shoe Joint					
Frac Ring # 1 @	ID	Frac ring # 2 @	ID	Frac Ring # 3 @	ID	Frac Ring # 4 @	ID		
The Information Stated Herein Is Correct				Customer Representative Signature					

The Road to Excellence Starts with Safety

The Road to Excellence Starts With Safety

Sold To #: 300721	Ship To #: 2869988	Quote #:	Sales Order #: 8370253
Customer: WILLIAMS PRODUCTION RMT INC - EBUS		Customer Rep: HARTL, AL	
Well Name: GM	Well #: 513-23	API/UWI #: 05-045-20481	
Field: GRAND VALLEY	City (SAP): PARACHUTE	County/Parish: Garfield	State: Colorado
Legal Description:			
Lat: N 39.506 deg. OR N 39 deg. 30 min. 22.601 secs.		Long: W 108.083 deg. OR W -109 deg. 55 min. 0.638 secs.	
Contractor: NABORS		Rig/Platform Name/Num: NABORS 576	
Job Purpose: Cement Surface Casing			Ticket Amount:
Well Type: Development Well		Job Type: Cement Surface Casing	
Sales Person: MAYO, MARK		Srvc Supervisor: SMITH, CHRISTOPHER	MBU ID Emp #: 452619

Activity Description	Date/Time	Cht #	Rate bbl/min	Volume bbl		Pressure psig		Comments
				Stage	Total	Tubing	Casing	
Call Out	08/16/2011 06:00							
Pre-Convoy Safety Meeting	08/16/2011 06:15							WITH ALL HES PERSONNEL
Arrive At Loc	08/16/2011 10:00							
Pre-Rig Up Safety Meeting	08/16/2011 12:20							WITH ALL ON HES PERSONNEL
Rig-Up Completed	08/16/2011 12:45							
Pre-Job Safety Meeting	08/16/2011 13:05							WITH ALL ON LOCATION PERSONNEL
Start Job	08/16/2011 13:19							TD 775', TP 758.9', SJ 43.8', OH 13.5", CSG 9.625" 32.3#, MUD 10.2 PPG
Pressure Test	08/16/2011 13:22		0.5	0.5				ALL LINES HELD 4650 PSI
Pump Spacer	08/16/2011 13:27		4	20			71.0	FRESH WATER
Pump Tail Cement	08/16/2011 13:40		8	75.2			311.0	200 SKS, 12.8 PPG, 2.11 FT3/SK, 11.75GAL/SK
Shutdown	08/16/2011 13:51							
Drop Top Plug	08/16/2011 13:52							COMP. REP. VERIFIED PLUG WENT, WASH UP ON TOP OF PLUG PER COMP. REP. REQUEST.
Pump Displacement	08/16/2011 13:55		10	46.3			360.0	
Slow Rate	08/16/2011 14:07		4	10			325.0	

Sold To #: 300721

Ship To #: 2869988

Quote #:

Sales Order #:

8370253

SUMMIT Version: 7.2.27

Sunday, August 28, 2011 09:43:00

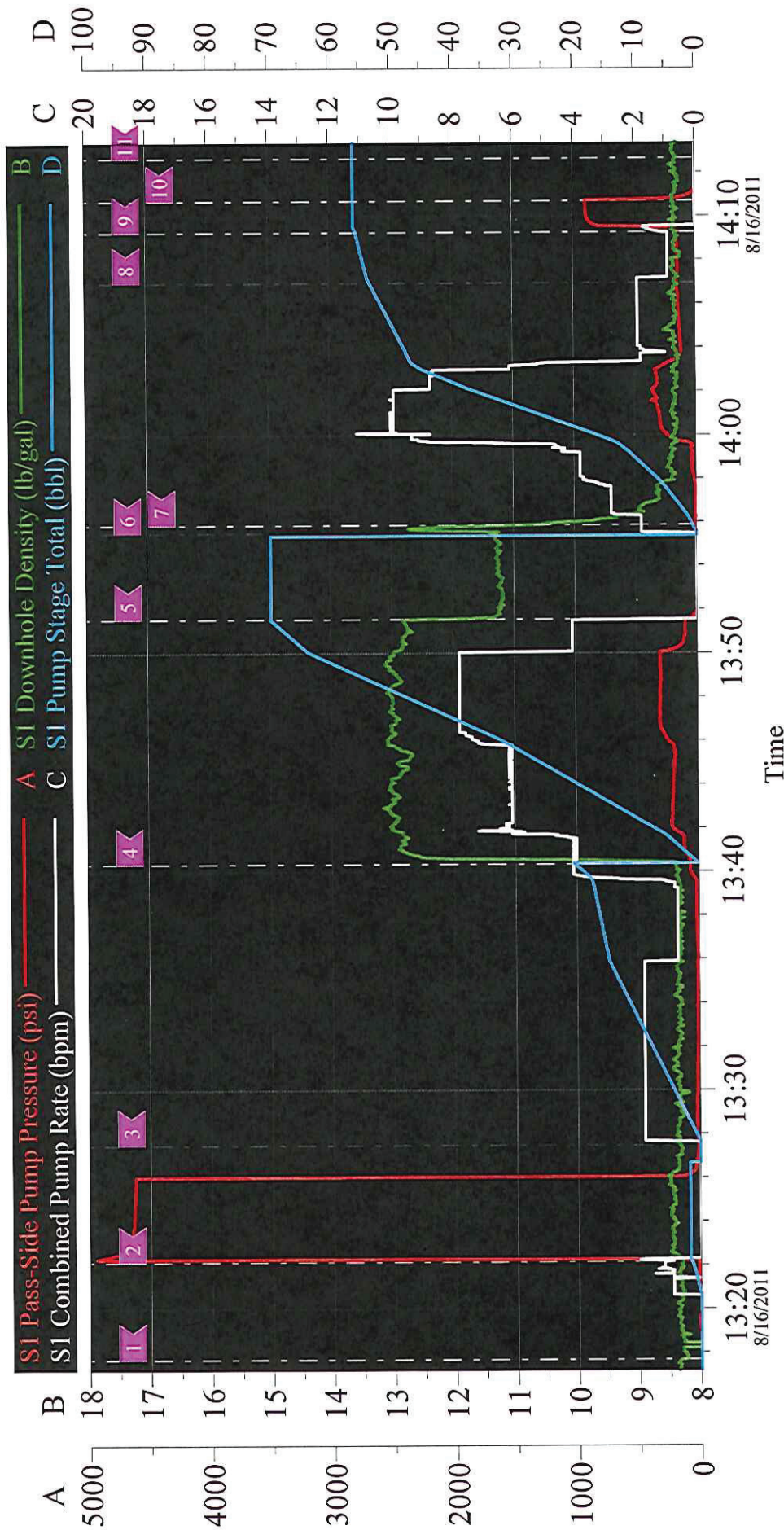
Activity Description	Date/Time	Cht #	Rate bbl/ min	Volume bbl		Pressure psig		Comments
				Stage	Total	Tubing	Casing	
Bump Plug	08/16/2011 14:09						905.0	PLUG BUMPED
Check Floats	08/16/2011 14:10							FLOATS HELD
End Job	08/16/2011 14:11							GOOD CIRCULATION THROUGHOUT JOB, 10 BBLs OF CEMENT TO SURFACE, PIPE WAS NOT MOVED DURING THE JOB.
Pre-Rig Down Safety Meeting	08/16/2011 14:20							WITH ALL HES PERSONNEL
Rig-Down Completed	08/16/2011 15:15							
Pre-Convoy Safety Meeting	08/16/2011 15:25							WITH ALL HES PERSONNEL
Comment	08/16/2011 15:30							THANKYOU FOR USING HALLIBURTON CEMENT, CHRIS SMITH AND CREW

JOB PROCEDURE

EVENT #	EVENT	VOLUME	SACKS	WEIGHT	YIELD	GAL/ SK
1	Start Job		<u>MAX</u> 1120			
6	Test Lines	2500.0				
	H2O SPACER	20.0				
	TAIL CMT	75.2	200	12.8	2.11	11.75
22	Drop Plug	0.0				
23	Displace with h2o	56.3				
26	LAND PLUG	166.0				
511	CHECK FLOATS		Do Not Overdisplace			
DISPLACEMENT	TOTAL PIPE	SHOE JOINT LENGTH		FLOAT COLLAR	BBL/FT	H2O REQ.
56.28	758.9	43.80		715.10	0.0787	132
PSI to Lift Pipe	285	*****Use Mud Scales on Each Tier*****				
Total Displacement	56.28					
CALCULATED DIFFERENTIAL PSI		166		TOTAL FLUID PUMPED		151
Collapse	1400	Burst	2270		SO#	8370653
RATE (bpm)	TAIL MIX WATER RATE (gpm)	RATE (bpm)	LEAD MIX WATER RATE (gpm)			
2	62.53	2	#REF!			
3	93.80	3	#REF!			
4	125.07	4	#REF!			
5	156.34	5	#REF!			
6	187.60	6	#REF!			
7	218.87	7	#REF!			
8	250.14	8	#REF!			

GM 513-23

Surface



Customer: WILLIAMS PRODUCTION RMT INC - EBUS
Well Description: GM 513-23
Company Man:

Job Date: 16-Aug-2011
Job Type: Surface
Cement Supervisor: C. Smith

Sales Order #: 8370253
ADC Used: YES
Elite/Operator