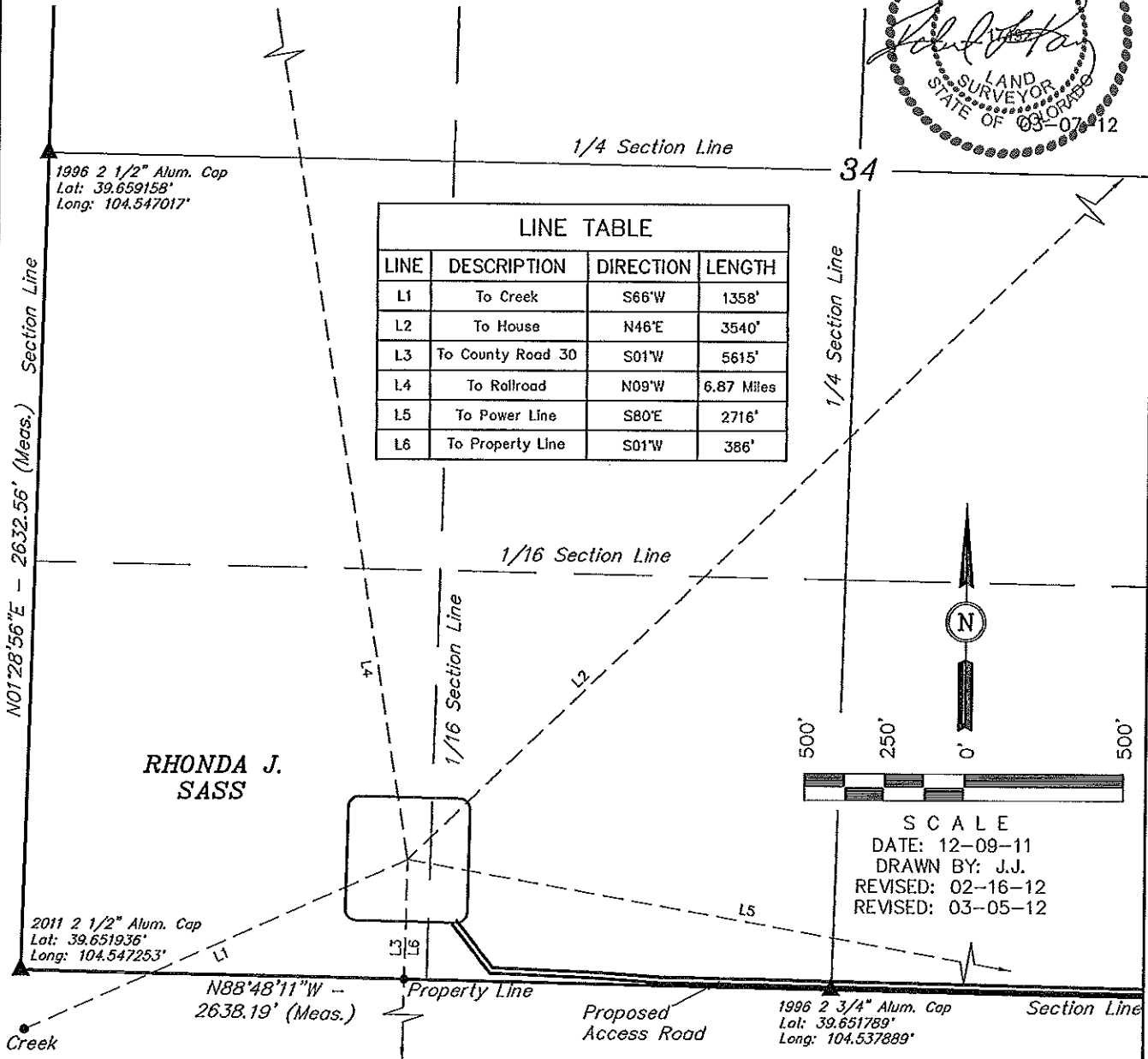


# ConocoPhillips Company

## LOCATION DRAWING FOR

GRIMM #34-4H  
SECTION 34, T4S, R64W, 6th P.M.  
386' FSL 1245' FWL

FIGURE #5



**PLANT COMMUNITY**

☐ DISTURBED GRASSLAND

☐ NATIVE GRASSLAND

☐ SHRUB LAND

☐ PLAINS RIPARIAN

☐ MOUNTAIN RIPARIAN

☐ FOREST LAND

☐ WETLANDS AQUATIC

☐ ALPINE

☐ OTHER (Describe): \_\_\_\_\_

**CURRENT LAND USE**

CROP LAND: ☐ IRRIGATED ☐ DRY LAND ☐ IMPROVED PASTURE ☐ HAY MEADOW ☐ CRP

NON-CROP LAND: ☐ RANGELAND ☐ TIMBER ☐ RECREATIONAL ☐ OTHER (Describe) \_\_\_\_\_

SUBDIVDED: ☐ INDUSTRIAL ☐ COMMERCIAL ☐ RESIDENTIAL

**FUTURE LAND USE**

CROP LAND: ☐ IRRIGATED ☐ DRY LAND ☐ IMPROVED PASTURE ☐ HAY MEADOW ☐ CRP

NON-CROP LAND: ☐ RANGELAND ☐ TIMBER ☐ RECREATIONAL ☐ OTHER (Describe) \_\_\_\_\_

SUBDIVDED: ☐ INDUSTRIAL ☐ COMMERCIAL ☐ RESIDENTIAL

UINTAH ENGINEERING & LAND SURVEYING  
85 So. 200 East \* Vernal, Utah 84078 \* (435) 789-1017