

WELL LOCATION PLAT

T4S, R64W, 6th P.M.

ConocoPhillips Company

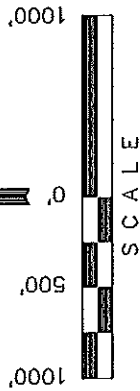
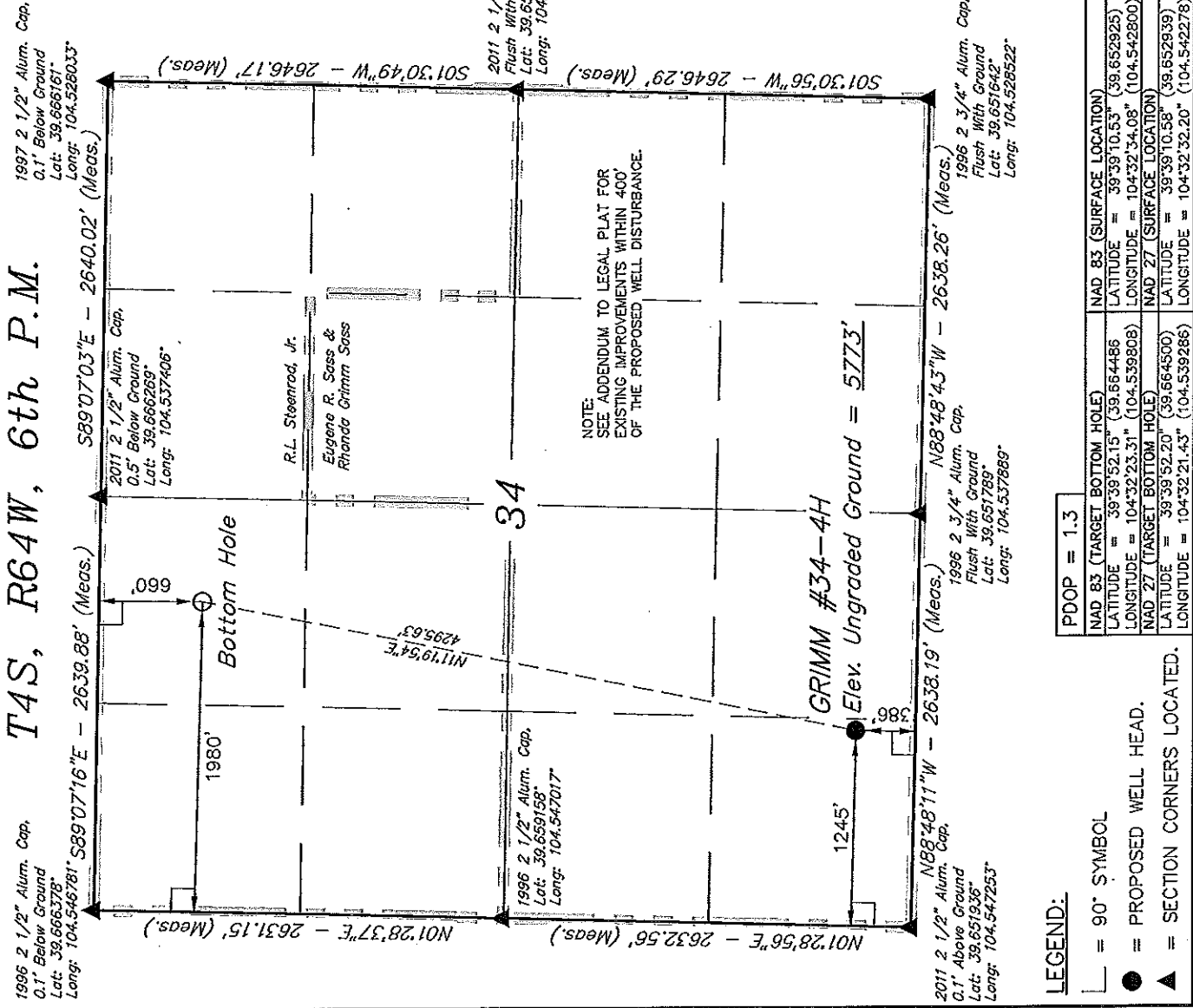
Well location, GRIMM #34-4H, located as shown in the SW 1/4 SW 1/4 of Section 34, T4S, R64W, 6th P.M., Arapahoe County, Colorado.

BASIS OF ELEVATION

BENCHMARK 374 LOCATED ON THE SECTION LINE BETWEEN SECTIONS 12 & 13, T5S, R64W, 6th P.M., TAKEN FROM 1988 PUBLISHED DATUM BY THE UNITED STATES DEPARTMENT OF THE INTERIOR, GEOLOGICAL SURVEY AS BEING 6054.61 FEET.

BASIS OF BEARINGS

BASIS OF BEARINGS IS A G.P.S. OBSERVATION.



CERTIFICATE

THIS IS TO CERTIFY THAT THE ABOVE PLAT WAS PREPARED FROM FIELD NOTES OF ACTUAL SURVEYS MADE BY ME OR UNDER MY SUPERVISION AND THAT THE SAME ARE TRUE AND CORRECT TO THE BEST OF MY KNOWLEDGE AND BELIEF.

REVISOR: 03-27-12
 REVISOR: 03-13-12
 REVISOR: 03-08-12
 REVISOR: 03-05-12
 REVISOR: 02-16-12
 REVISOR: 12-19-11

REGISTERED LAND SURVEYOR
 REGISTRATION NO. 15757-D-1
 STATE OF COLORADO
 03-27-12

UNTAH ENGINEERING & LAND SURVEYING
 85 SOUTH 200 EAST - VERNAL, UTAH 84078
 (435) 789-1017

SCALE	1" = 1000'	DATE SURVEYED:	11-19-11	DATE DRAWN:	02-29-12
PARTY	J.H. C.M. J.J.	REFERENCES	G.L.O. PLAT		
WEATHER	COOL	FILE	ConocoPhillips Company		

LEGEND:

- = 90° SYMBOL
- = PROPOSED WELL HEAD.
- ▲ = SECTION CORNERS LOCATED.

PDOP = 1.3	NAD 83 (TARGET BOTTOM HOLE)	NAD 83 (SURFACE LOCATION)
LATITUDE = 39°39'52.15" (39.664486)	LATITUDE = 39°39'10.53" (39.652925)	
LONGITUDE = 104°32'23.31" (104.539808)	LONGITUDE = 104°32'34.08" (104.542800)	
NAD 27 (TARGET BOTTOM HOLE)	NAD 27 (SURFACE LOCATION)	
LATITUDE = 39°39'52.20" (39.664500)	LATITUDE = 39°39'10.58" (39.652939)	
LONGITUDE = 104°32'21.43" (104.539286)	LONGITUDE = 104°32'32.20" (104.542278)	

SECTION BREAKDOWN T4S, R64W, 6th P.M.

ConocoPhillips Company

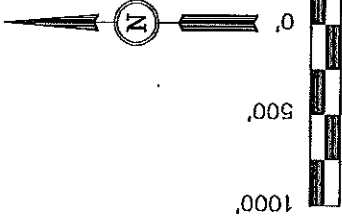
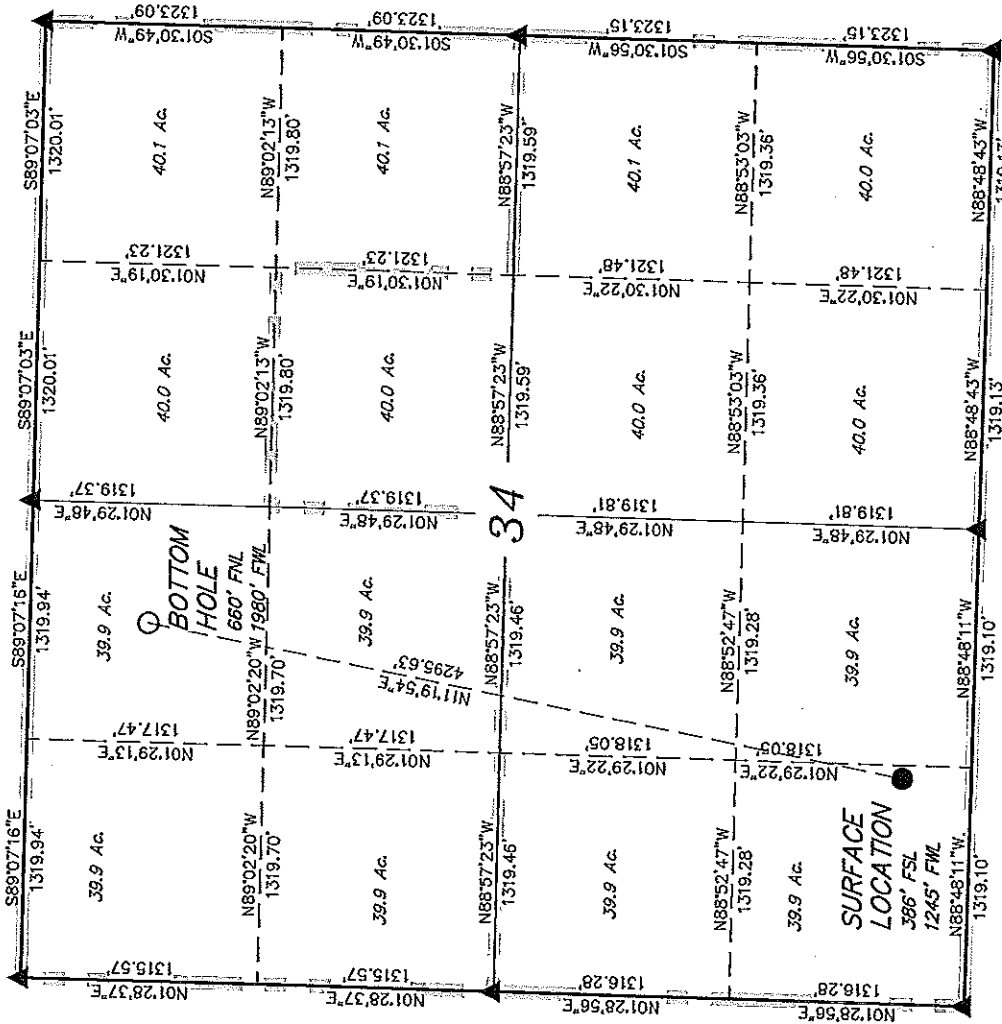
Well location, GRIMM #34-4H, located as shown in the SW 1/4 SW 1/4 of Section 34, T4S, R64W, 6th P.M., Arapahoe County, Colorado.

BASIS OF ELEVATION

BENCHMARK 374 LOCATED ON THE SECTION LINE BETWEEN SECTIONS 12 & 13, T5S, R64W, 6th. P.M., TAKEN FROM 1988 PUBLISHED DATUM BY THE UNITED STATES DEPARTMENT OF THE INTERIOR, GEOLOGICAL SURVEY AS BEING 6054.61 FEET.

BASIS OF BEARINGS

BASIS OF BEARINGS IS A G.P.S. OBSERVATION.



CERTIFICATE
THIS IS TO CERTIFY THAT THE ABOVE PLAT WAS PREPARED FROM FIELD NOTES OF ACTUAL SURVEYS MADE BY ME OR UNDER MY SUPERVISION AND THAT THE SAME ARE TRUE AND CORRECT TO THE BEST OF MY KNOWLEDGE AND BELIEF.
[Signature]
REGISTERED LAND SURVEYOR
REGISTRATION NO. 12423
STATE OF COLORADO
03-27-12

REVISED: 03-27-12
REVISED: 03-13-12
REVISED: 03-08-12

UTAH ENGINEERING & LAND SURVEYING
85 SOUTH 200 EAST - VERNAL, UTAH 84078
(435) 789-1017

SCALE	1" = 1000'	DATE SURVEYED:	11-19-11	DATE DRAWN:	03-05-12
PARTY	J.H. C.M. J.J.	REFERENCES	G.L.O. PLAT		
WEATHER	COOL	FILE	ConocoPhillips Company		

LEGEND:

- = 90° SYMBOL
 - = PROPOSED WELL HEAD.
 - ▲ = SECTION CORNERS LOCATED.
- | | |
|-----------------------------|---------------------------|
| PDOP = 1.3 | NAD 83 (SURFACE LOCATION) |
| LATITUDE = 39°39'10.53" | LONGITUDE = 104°32'34.08" |
| LATITUDE = 39°39'10.56" | LONGITUDE = 104°32'32.20" |
| NAD 83 (TARGET BOTTOM HOLE) | |
| LATITUDE = 39°39'52.15" | LONGITUDE = 104°32'23.31" |
| LATITUDE = 39°39'52.20" | LONGITUDE = 104°32'21.43" |