

Steil Surveying Services, LLC

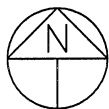
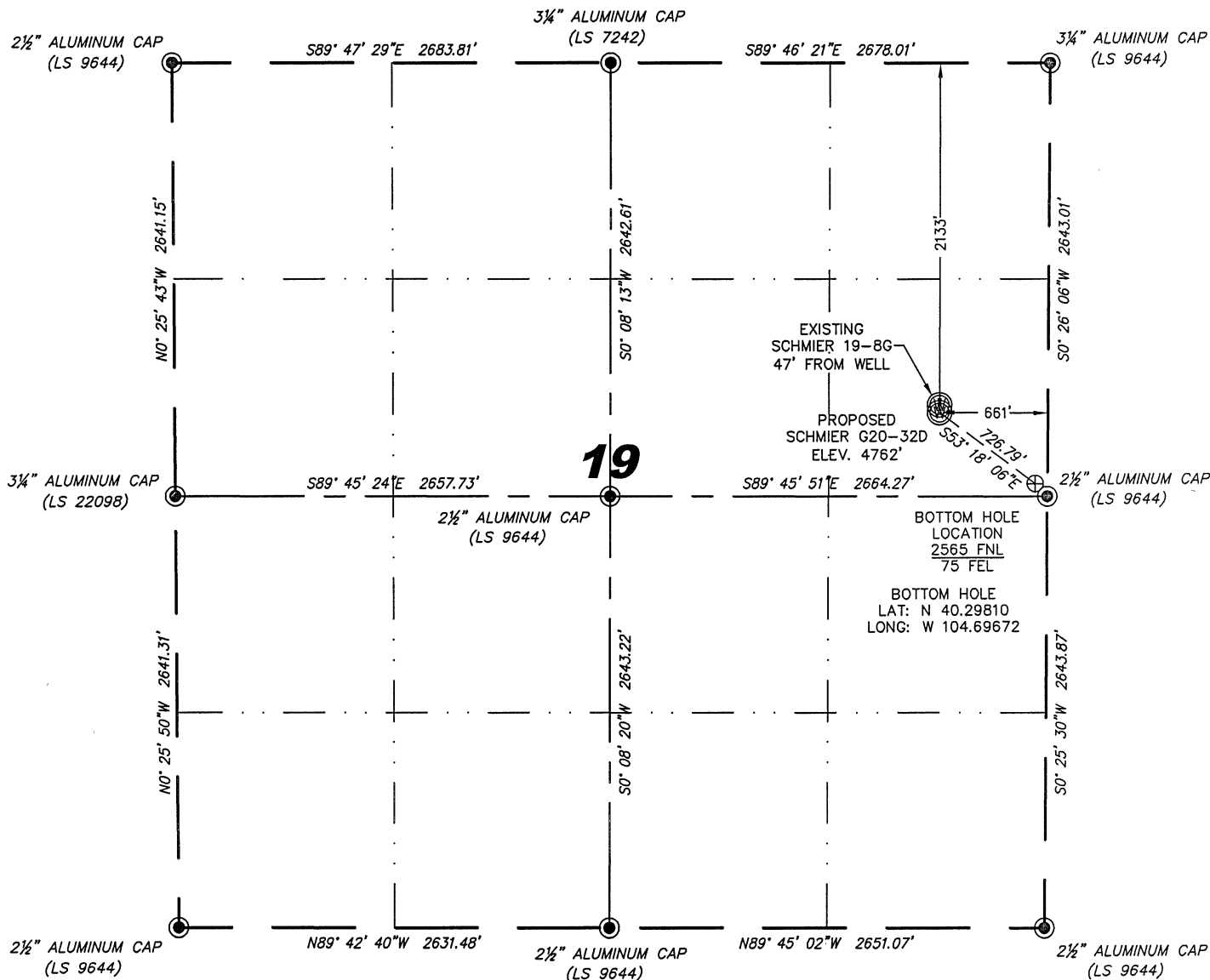
1102 West 19th Street P.O. BOX 2073

Cheyenne, Wyoming 82001

# WELL LOCATION CERTIFICATE

THIS MAP DOES NOT REPRESENT A BOUNDARY SURVEY

SECTIONS 19  
TOWNSHIP 4 NORTH  
RANGE 65 WEST



0 1000

Scale: 1" = 1000'

IN ACCORDANCE WITH A REQUEST FROM SCOTT LEWIS - NOBLE ENERGY INC, STEIL SURVEYING SERVICES, LLC HAS DETERMINED THE SURFACE HOLE LOCATION OF THE SCHMIER G20-32D WELL TO BE 2133' FNL, 661' FEL, AS MEASURED AT NINETY (90) DEGREES FROM THE SECTION LINES, SECTION 19, TOWNSHIP 4 NORTH, RANGE 65 WEST, 6TH PRINCIPLE MERIDIAN, WELD COUNTY, COLORADO.

I HEREBY CERTIFY THAT THIS WELL LOCATION CERTIFICATE WAS PREPARED BY ME, OR UNDER MY DIRECT SUPERVISION, THAT THE FIELD WORK WAS COMPLETED ON 09/29/2011, FOR AND ON BEHALF OF NOBLE ENERGY INC, THAT IT IS NOT A LAND SURVEY PLAT OR AN IMPROVEMENT SURVEY PLAT, AND THAT IT IS NOT TO BE RELIED UPON FOR ESTABLISHMENT OF FENCE, BUILDING, OR OTHER FUTURE IMPROVEMENT LINES.

## NOTES:

- 1) BASIS OF BEARINGS FOR THIS MAP ARE BASED UPON GPS OBSERVATIONS MADE ON 03/01/2009 BETWEEN MONUMENTS LOCATED AT THE SOUTHEAST SECTION CORNER AND THE NORTHEAST SECTION CORNER OF SAID SECTION AND WITH ALL BEARINGS SHOWN HEREON RELATIVE THERETO.
- 2) COORDINATES SHOWN ARE COLORADO STATE PLANE (NORTH ZONE) NAD 83
- 3) ELEVATIONS ARE BASED UPON NGS OPUS SOLUTION NAVD 88 DATUM.
- 4) THE NEAREST EXISTING WELL IN THIS QUARTER: SCHMIER 19-8G, 47' NORTH.
- 5) SEE LOCATION DRAWING FOR ALL IMPROVEMENTS WITHIN VISIBLE IMPROVEMENT LIMIT.
- 6) THE LOCATION FALLS IN IRRIGATED CROP LAND.

## LATITUDE & LONGITUDE (NAD 83 SURFACE HOLE):

LATITUDE: N 40.29930°  
LONGITUDE: W 104.69879°  
PDOP: 2.2  
QUARTER-QUARTER: SE/4NE/4 SEC 19  
NEAREST PROPERTY LINE: 510' SOUTH

## LEGEND

- FOUND SURVEY MONUMENT PER MONUMENT RECORD - EXCEPTIONS NOTED.
- (C) CALCULATED DIMENSION

Jeffrey B. Jones  
Professional Land Surveyor Registration No. 37920  
State of Colorado

Completed 10/06/2011

JOB #: 11086

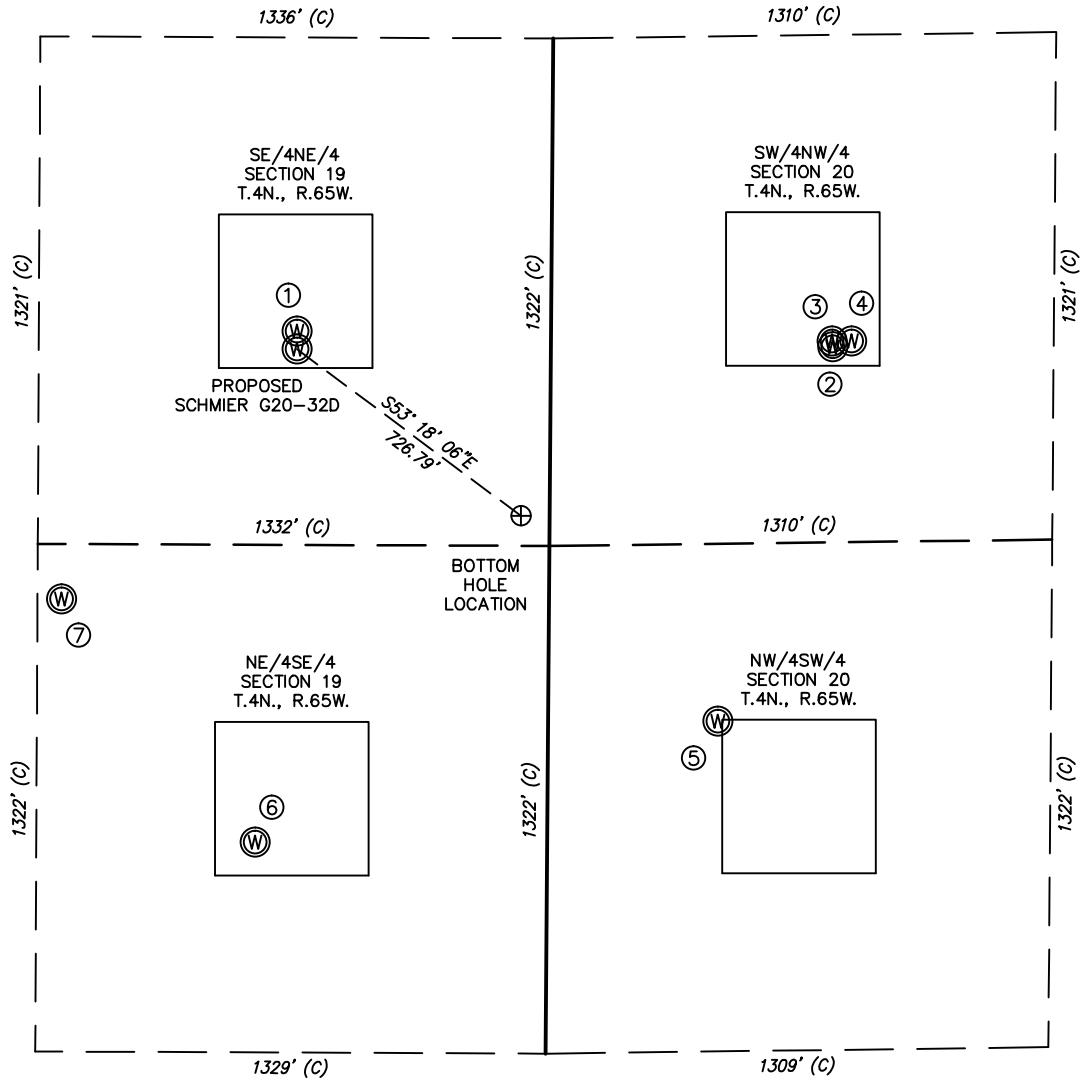
Revised 01/25/2012



NOTICE: According to Colorado law you MUST commence any legal action based upon any defect in this W.L.C. within three years after you first discover such defect. In no event may any action based upon any defect in this W.L.C. be commenced more than ten years from this sold date of the certification shown hereon.

# SKETCH – SCHMIER G20-32D

SECTIONS 19 & 20  
TOWNSHIP 4 NORTH  
RANGE 65 WEST



①	②	③	④	⑤	⑥	⑦
SCHMIER 19-8G SE/NE SEC. 19 2086' FNL 661' FEL EL 4762' N 40.29943 W 104.69879 PDOP 2.0	BREHON 22-20 SW/NW SEC. 20 2133' FNL 733' FWL EL 4774' N 40.29929 W 104.69379 PDOP 2.9	BREHON 31-20 SW/NW SEC. 20 2118' FNL 732' FWL EL 4774' N 40.29933 W 104.69380 PDOP 2.8	HSR-RAWITCH 5-20 SW/NW SEC. 20 2118' FNL 782' FWL EL 4774' N 40.29933 W 104.69361 PDOP 2.9	PESCHEL 13-20 NW/SW SEC. 20 2181' FSL 442' FWL EL 4786' N 40.29662 W 104.69489 PDOP 2.4	SCHMIDT 19-9G NE/SE SEC. 19 1869' FSL 760' FEL EL 4775' N 40.29578 W 104.69922 PDOP 2.0	SCHMIDT G19-22 NE/SE SEC. 19 2500' FSL 1269' FEL EL 4765' N 40.29753 W 104.70101 PDOP 2.9

## NOTES:

- THIS SKETCH DOES NOT REPRESENT A BOUNDARY SURVEY.
- THE DATUM FOR THE LATITUDES AND LONGITUDES ON THIS SKETCH IS NAD83.

