
OXY GRAND JUNCTION EBUSINESS

**Cascade Creek 697-05-63A
GRAND VALLEY
Garfield County , Colorado**

Cement Surface Casing
06-Mar-2012

Post Job Report

The Road to Excellence Starts with Safety

Sold To #: 344034	Ship To #: 2912883	Quote #:	Sales Order #: 9325902
Customer: OXY GRAND JUNCTION EBUSINESS		Customer Rep: Benevides, Victor	
Well Name: Cascade Creek		Well #: 697-05-63A	API/UWI #: 05-045-20725
Field: GRAND VALLEY	City (SAP): PARACHUTE	County/Parish: Garfield	State: Colorado
Lat: N 39.549 deg. OR N 39 deg. 32 min. 55.644 secs.		Long: E 108.23 deg. OR E 108 deg. 13 min. 48.684 secs.	
Contractor: OXY		Rig/Platform Name/Num: H&P 330	
Job Purpose: Cement Surface Casing			
Well Type: Development Well		Job Type: Cement Surface Casing	
Sales Person: HIMES, JEFFREY		Srvc Supervisor: YOUNG, JEREMY	MBU ID Emp #: 418013

Job Personnel

HES Emp Name	Exp Hrs	Emp #	HES Emp Name	Exp Hrs	Emp #	HES Emp Name	Exp Hrs	Emp #
BURKE, BRENDAN Patrick	24	487782	CASTILLO, FRANCISCO P	24	513620	GOWEN, WESLEY M	24	496205
MILLER II, MATTHEW Reginald	2	425164	YOUNG, JEREMY R	24	418013			

Equipment

HES Unit #	Distance-1 way	HES Unit #	Distance-1 way	HES Unit #	Distance-1 way	HES Unit #	Distance-1 way
10248057	120 mile	10744648C	120 mile	10784080	120 mile	10804579	120 mile
10938657	120 mile	11259881	120 mile	11808837	120 mile	11808845	120 mile
4904	120 mile	6374L	120 mile				

Job Hours

Date	On Location Hours	Operating Hours	Date	On Location Hours	Operating Hours	Date	On Location Hours	Operating Hours
03/05/2012	12	6	03/06/2012	12	4			

TOTAL Total is the sum of each column separately

Job

Job Times

Formation Name	Date	Time	Time Zone
Formation Depth (MD) Top Bottom	Called Out	05 - Mar - 2012	05:30 MST
Form Type BHST	On Location	05 - Mar - 2012	12:00 MST
Job depth MD 2762.8 ft Job Depth TVD 2762.8 ft	Job Started	05 - Mar - 2012	17:46 MST
Water Depth Wk Ht Above Floor . ft	Job Completed	06 - Mar - 2012	10:45 MST
Perforation Depth (MD) From To	Departed Loc	06 - Mar - 2012	12:00 MST

Well Data

Description	New / Used	Max pressure psig	Size in	ID in	Weight lbm/ft	Thread	Grade	Top MD ft	Bottom MD ft	Top TVD ft	Bottom TVD ft
14 3/4" OPEN HOLE				14.75				.	2813.		
9 5/8" SURFACE CASING	Unknown		9.625	8.921	36.		J-55	.	2762.8		

Tools and Accessories

Type	Size	Qty	Make	Depth	Type	Size	Qty	Make	Depth	Type	Size	Qty	Make
Guide Shoe					Packer					Top Plug	9.625	1	HES
Float Shoe					Bridge Plug					Bottom Plug			
Float Collar					Retainer					SSR plug set			
Insert Float										Plug Container	9.625	1	HES
Stage Tool										Centralizers			

Miscellaneous Materials

Gelling Agt	Conc	Surfactant	Conc	Acid Type	Qty	Conc %
Treatment Fld	Conc	Inhibitor	Conc	Sand Type	Size	Qty

Fluid Data

Stage/Plug #: 1

Fluid #	Stage Type	Fluid Name	Qty	Qty uom	Mixing Density lbm/gal	Yield ft ³ /sk	Mix Fluid Gal/sk	Rate bbl/min	Total Mix Fluid Gal/sk
1	Fresh Water Spacer	FRESH WATER	10.00	bbl	8.33	.0	.0	1	
2	Gel Water Spacer	GEL WATER	20.00	bbl	8.34	.0	.0	4	
0.25 gal/bbl		LGC-36 UC, BULK (101582749)							
3	Fresh Water Spacer	FRESH WATER	10.00	bbl	8.33	.0	.0	4	
4	Lead Cement	HALCEM (TM) SYSTEM (452986)	1200.0	sacks	12.3	2.15	11.83	6	11.83
11.83 Gal		FRESH WATER							
5	Tail Cement	VERSACEM (TM) SYSTEM (452010)	170.0	sacks	12.8	2.07	10.67	6	10.67
10.67 Gal		FRESH WATER							
6	Fresh Water Displacement	FRESH WATER	210.00	bbl	8.34	.0	.0	6	
7	Topout Cement	HALCEM™ SYSTEM (452986)	570	sacks	12.5	1.97	10.96	3	10.96
Calculated Values		Pressures		Volumes					
Displacement	210	Shut In: Instant		Lost Returns	YES	Cement Slurry	722.1	Pad	
Top Of Cement	SURFACE	5 Min		Cement Returns	2.5	Actual Displacement	210	Treatment	
Frac Gradient		15 Min		Spacers	40	Load and Breakdown		Total Job	979.1
Rates									
Circulating		Mixing	6	Displacement	6	Avg. Job	6		
Cement Left In Pipe	Amount	45.5 ft	Reason	Shoe Joint					
Frac Ring # 1 @	ID	Frac ring # 2 @	ID	Frac Ring # 3 @	ID	Frac Ring # 4 @	ID		
The Information Stated Herein Is Correct				Customer Representative Signature					

The Road to Excellence Starts with Safety

Sold To #: 344034	Ship To #: 2912883	Quote #:	Sales Order #: 9325902
Customer: OXY GRAND JUNCTION EBUSINESS		Customer Rep: Benevides, Victor	
Well Name: Cascade Creek		Well #: 697-05-63A	API/UWI #: 05-045-20725
Field: GRAND VALLEY	City (SAP): PARACHUTE	County/Parish: Garfield	State: Colorado
Legal Description:			
Lat: N 39.549 deg. OR N 39 deg. 32 min. 55.644 secs.		Long: E 108.23 deg. OR E 108 deg. 13 min. 48.684 secs.	
Contractor: OXY		Rig/Platform Name/Num: H&P 330	
Job Purpose: Cement Surface Casing			Ticket Amount:
Well Type: Development Well		Job Type: Cement Surface Casing	
Sales Person: HIMES, JEFFREY		Srvc Supervisor: YOUNG, JEREMY	MBU ID Emp #: 418013

Activity Description	Date/Time	Cht #	Rate bbl/min	Volume bbl		Pressure psig		Comments
				Stage	Total	Tubing	Casing	
Call Out	03/05/2012 05:30							
Pre-Convoy Safety Meeting	03/05/2012 07:50							WITH ALL HES PERSONNEL
Crew Leave Yard	03/05/2012 08:00							
Arrive At Loc	03/05/2012 12:00							RIG WAS RUNNING CASING UPON HES ARRIVAL
Assessment Of Location Safety Meeting	03/05/2012 16:00							WITH ALL HES PERSONNEL
Other	03/05/2012 16:10							SPOT EQUIPMENT
Pre-Rig Up Safety Meeting	03/05/2012 16:20							WITH ALL HES PERSONNEL
Rig-Up Equipment	03/05/2012 16:30							
Pre-Job Safety Meeting	03/05/2012 17:30							WITH ALL PERSONNEL ON LOCATION
Start Job	03/05/2012 17:46							TD 2813 FT, TP 2762.8 FT, SHOE 45.5 FT, HOLE 14 3/4 IN, MUD WT 9.1 PPG, CSG 9 5/8 IN 36 LB/FT J-55
Other	03/05/2012 17:47		2	2			28.0	FILL LINES WITH FRESH WATER
Test Lines	03/05/2012 17:49							TEST LINES TO 3000 PSI. PRESSURE HOLDING.
Pump Spacer 1	03/05/2012 17:56		1	10			18.0	FRESH WATER
Pump Spacer 2	03/05/2012 18:10		4	20			75.0	GEL WATER
Pump Spacer 1	03/05/2012 18:15		4	10			75.0	FRESH WATER

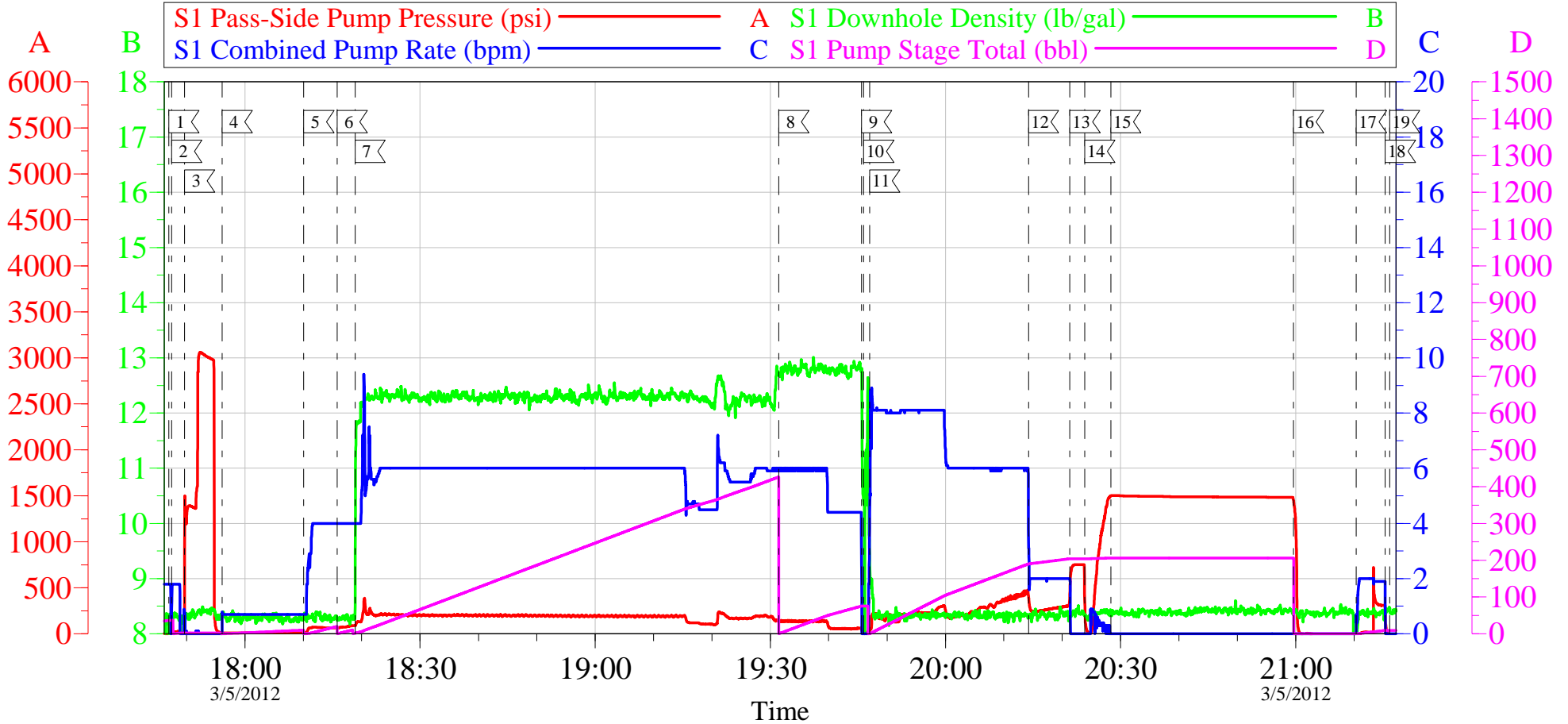
Activity Description	Date/Time	Cht #	Rate bbl/min	Volume bbl		Pressure psig		Comments
				Stage	Total	Tubing	Casing	
Pump Lead Cement	03/05/2012 18:18		6	459.5			200.0	1200 SKS AT 12.3 PPG, 2.15 FT3/SK, 11.83 GAL/SK
Pump Tail Cement	03/05/2012 19:31		6	62.7			135.0	170 SKS AT 12.8 PPG, 2.07 FT3/SK, 10.67 GAL/SK
Shutdown	03/05/2012 19:45							
Drop Top Plug	03/05/2012 19:46							PLUG LAUNCHED
Pump Displacement	03/05/2012 19:47		6	190			480.0	FRESH WATER
Slow Rate	03/05/2012 20:14		2	20			300.0	SLOW RATE 20 BBLS PRIOR TO CALCULATED DISPLACEMENT
Bump Plug	03/05/2012 20:21		2		210		750.0	PLUG BUMPED
Check Floats	03/05/2012 20:23							FLOATS HOLDING. RETURNED 1 BBL H2O TO PUMP
Pressure Test	03/05/2012 20:28						1500.0	PRESSURE TEST CASING TO 1500 PSI AS PER COMPANY REP.
Release Casing Pressure	03/05/2012 20:59							
Pump Water	03/05/2012 21:10		2	10			725.0	PUMP SUGAR WATER DOWN PARASITE STRING
Shutdown	03/05/2012 21:15							
End Job	03/05/2012 21:16							JOB WAS PUMPED OFF LINE THROUGH PLUG CONTAINER WITH QUICK LATCH. PIPE WAS STATIC DURING JOB. NO CIRCULATION THROUGHOUT JOB. HES RETURNED NO CEMENT TO SURFACE
Start Job	03/05/2012 22:38							TOPOUT #1
Pump Water	03/05/2012 22:39		1	1			.0	PUMP WATER AHEAD TO ENSURE LINES ARE CLEAR
Shutdown	03/05/2012 22:40							SHUTDOWN TO MIX UP CEMENT TUB

Activity Description	Date/Time	Cht #	Rate bbl/min	Volume bbl		Pressure psig		Comments
				Stage	Total	Tubing	Casing	
Pump Cement	03/05/2012 22:47		3	44.9		140.0		128 SKS AT 12.5 PPG, 1.97 FT3/SK, 10.96 GAL/SK
Pump Water	03/05/2012 23:02		3	1		79.0		PUMP WATER BEHIND TO CLEAR LINES
Shutdown	03/05/2012 23:02							
End Job	03/05/2012 23:03							HES RETURNED NO CEMENT TO SURFACE
Start Job	03/06/2012 01:09							TOPOUT #2
Pump Water	03/06/2012 01:10		1	1			4.0	PUMP WATER AHEAD TO ENSURE LINES ARE CLEAR
Shutdown	03/06/2012 01:11							SHUTDOWN TO MIX UP CEMENT TUB
Pump Cement	03/06/2012 01:17		3	51.2			110.0	146 SKS AT 12.5 PPG, 1.97 FT3/SK, 10.96 GAL/SK
Pump Water	03/06/2012 01:32		3	1			82.0	PUMP WATER BEHIND TO CLEAR LINES
Shutdown	03/06/2012 01:32							
End Job	03/06/2012 01:33							HES RETURNED NO CEMENT TO SURFACE
Start Job	03/06/2012 03:45							TOPOUT #3
Pump Water	03/06/2012 03:46		1	1			2.0	PUMP WATER AHEAD TO ENSURE LINES ARE CLEAR
Shutdown	03/06/2012 03:47							SHUTDOWN TO MIX UP CEMENT TUB
Pump Cement	03/06/2012 03:54		3	51.2			108.0	146 SKS AT 12.5 PPG, 1.97 FT3/SK, 10.96 GAL/SK
Pump Water	03/06/2012 04:14		3	1			85.0	PUMP WATER BEHIND TO CLEAR LINES
Shutdown	03/06/2012 04:14							
End Job	03/06/2012 04:15							HES RETURNED NO CEMENT TO SURFACE. WAIT FOR NEXT 500 SKS OF TOPOUT CEMENT TO GET TO LOCATION.
Start Job	03/06/2012 08:15							TOPOUT #4

Activity Description	Date/Time	Cht #	Rate bbl/min	Volume bbl		Pressure psig		Comments
				Stage	Total	Tubing	Casing	
Pump Water	03/06/2012 08:16		1	1			6.0	PUMP WATER AHEAD TO ENSURE LINES ARE CLEAR
Shutdown	03/06/2012 08:17							SHUTDOWN TO MIX UP CEMENT TUB
Pump Cement	03/06/2012 08:23		3	46.5			108.0	150 SKS AT 12.5 PPG, 1.97 FT ³ /SK, 10.96 GAL/SK
Shutdown	03/06/2012 08:38							SHUTDOWN TO SEE IF CEMENT FALLS BACK
Resume	03/06/2012 08:41		1.5	6.1			50.0	RESUME PUMPING AFTER CEMENT FELL. HES HESITATED FIVE TIMES TO SEE IF CEMENT WOULD STAY IN PLACE
Shutdown	03/06/2012 08:57				52.6			
End Job	03/06/2012 08:58							HES RETURNED 2.5 BBL OF CEMENT TO SURFACE. CREW WAS HELD ON LOCATION TO MAKE SURE CEMENT DID NOT FALL BACK.
Comment	03/06/2012 08:59							CEMENT DID NOT FALL BACK AND CREW WAS RELEASED AT 10:45. APPROX 350 SKS OF TOPOUT LEFT ON LOCATION IN SILO.
Pre-Rig Down Safety Meeting	03/06/2012 10:50							WITH ALL HES PERSONNEL
Rig-Down Equipment	03/06/2012 11:00							
Pre-Convoy Safety Meeting	03/06/2012 11:50							WITH ALL HES PERSONNEL
Crew Leave Location	03/06/2012 12:00							
Comment	03/06/2012 12:01							THANK YOU FOR USING HALLIBURTON CEMENT DEPARTMENT. JEREMY YOUNG AND CREW

OXY - CC 697-05-63A

9 5/8 SURFACE

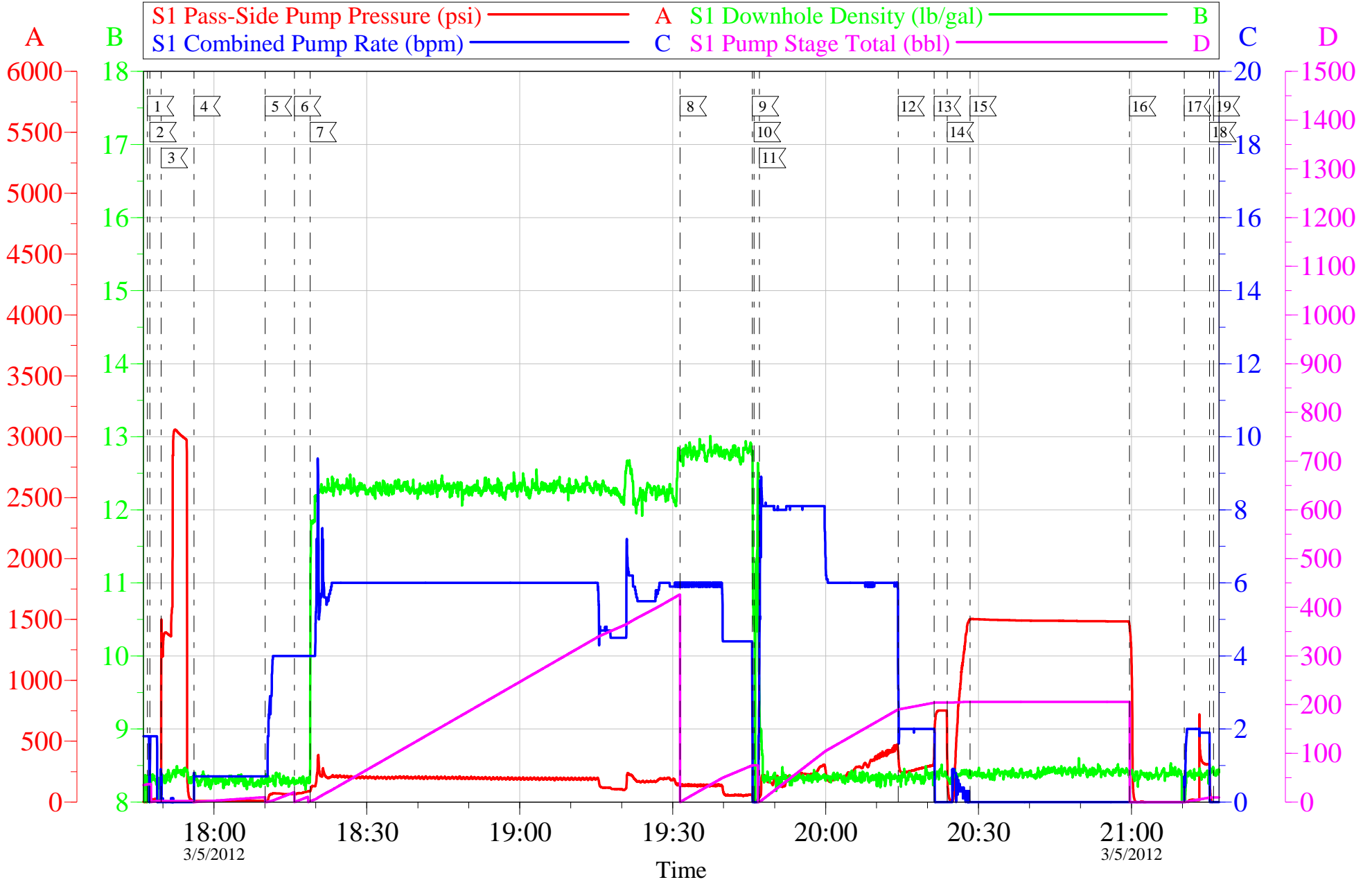


1	START JOB	17:46:57	2	FILL LINES	17:47:27	3	TEST LINES	17:49:39
4	PUMP H2O SPACER 1	17:56:06	5	PUMP GEL SPACER	18:10:05	6	PUMP H2O SPACER 2	18:15:48
7	PUMP LEAD CEMENT	18:18:52	8	PUMP TAIL CEMENT	19:31:26	9	SHUTDOWN	19:45:38
10	DROP TOP PLUG	19:46:00	11	PUMP DISPLACEMENT	19:47:00	12	SLOW RATE	20:14:13
13	BUMP PLUG	20:21:19	14	CHECK FLOATS	20:23:51	15	PRESSURE TEST CASING	20:28:19
16	RELEASE CASING PRESSURE	20:59:37	17	PUMP DOWN PARASITE STRING	21:10:23	18	SHUTDOWN	21:15:20
19	END JOB	21:16:05						

Customer: OXY	Job Date: 05-Mar-2012	Sales Order #: 9325902
Well Description: CC 697-05-63A	Job Type: SURFACE	ADC Used: YES
Company Rep: VICTOR BENEVIDES	Cement Supervisor: JEREMY YOUNG	Elite #6: JAVIER CASTILLO

OXY - CC 697-05-63A

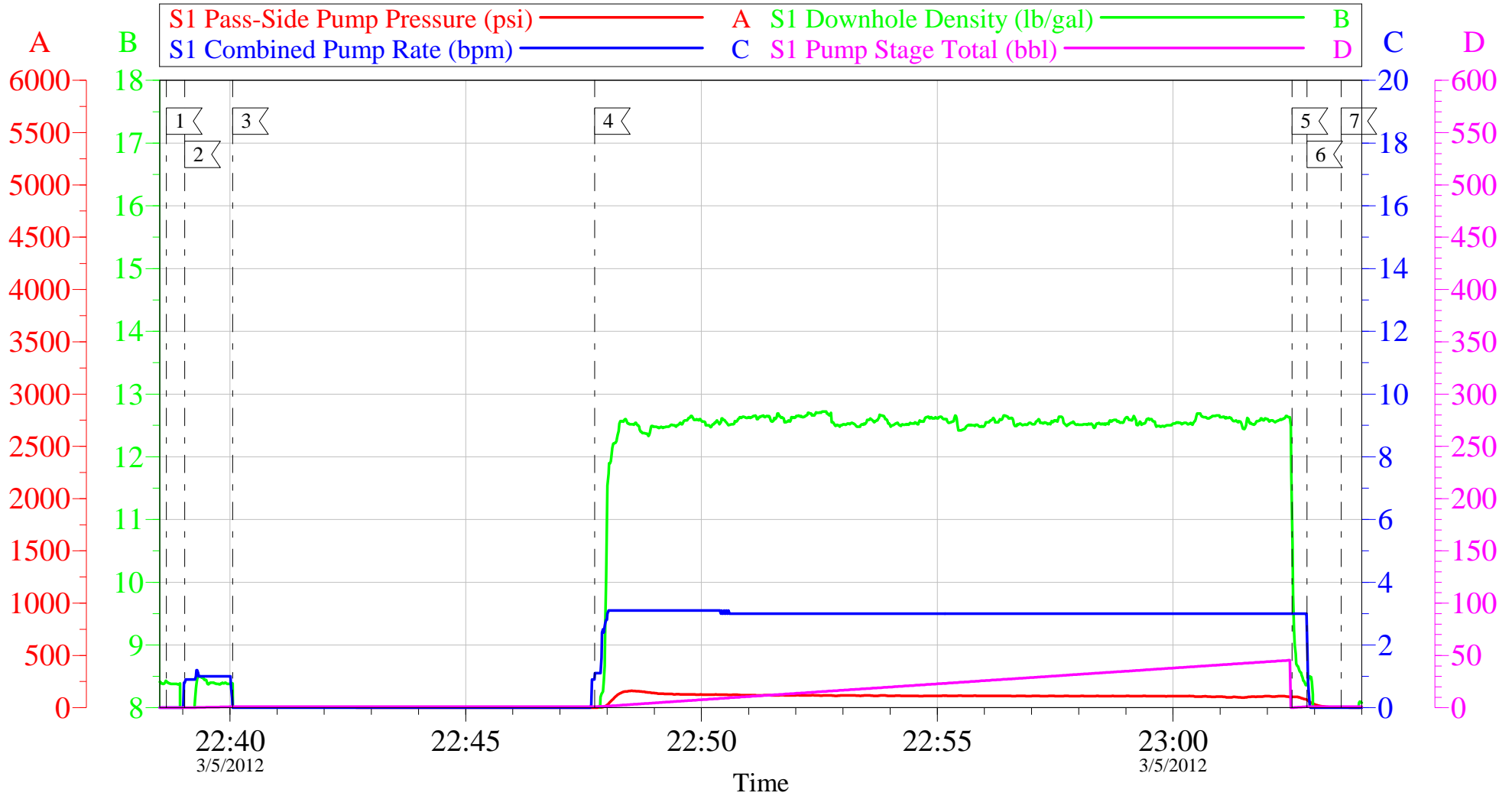
9 5/8 SURFACE



Customer: OXY	Job Date: 05-Mar-2012	Sales Order #: 9325902
Well Description: CC 697-05-63A	Job Type: SURFACE	ADC Used: YES
Company Rep: VICTOR BENEVIDES	Cement Supervisor: JEREMY YOUNG	Elite #6: JAVIER CASTILLO

OXY - CC 697-05-63A

TOPOUT #1



Local Event Log

1	START JOB	22:38:39	2	PUMP WATER AHEAD	22:39:03	3	SHUTDOWN	22:40:04
4	PUMP CEMENT	22:47:44	5	PUMP WATER BEHIND	23:02:32	6	SHUTDOWN	23:02:50
7	END JOB	23:03:34						

Customer: OXY
 Well Description: CC 697-05-63A
 Company Rep: VICTOR BENEVIDES

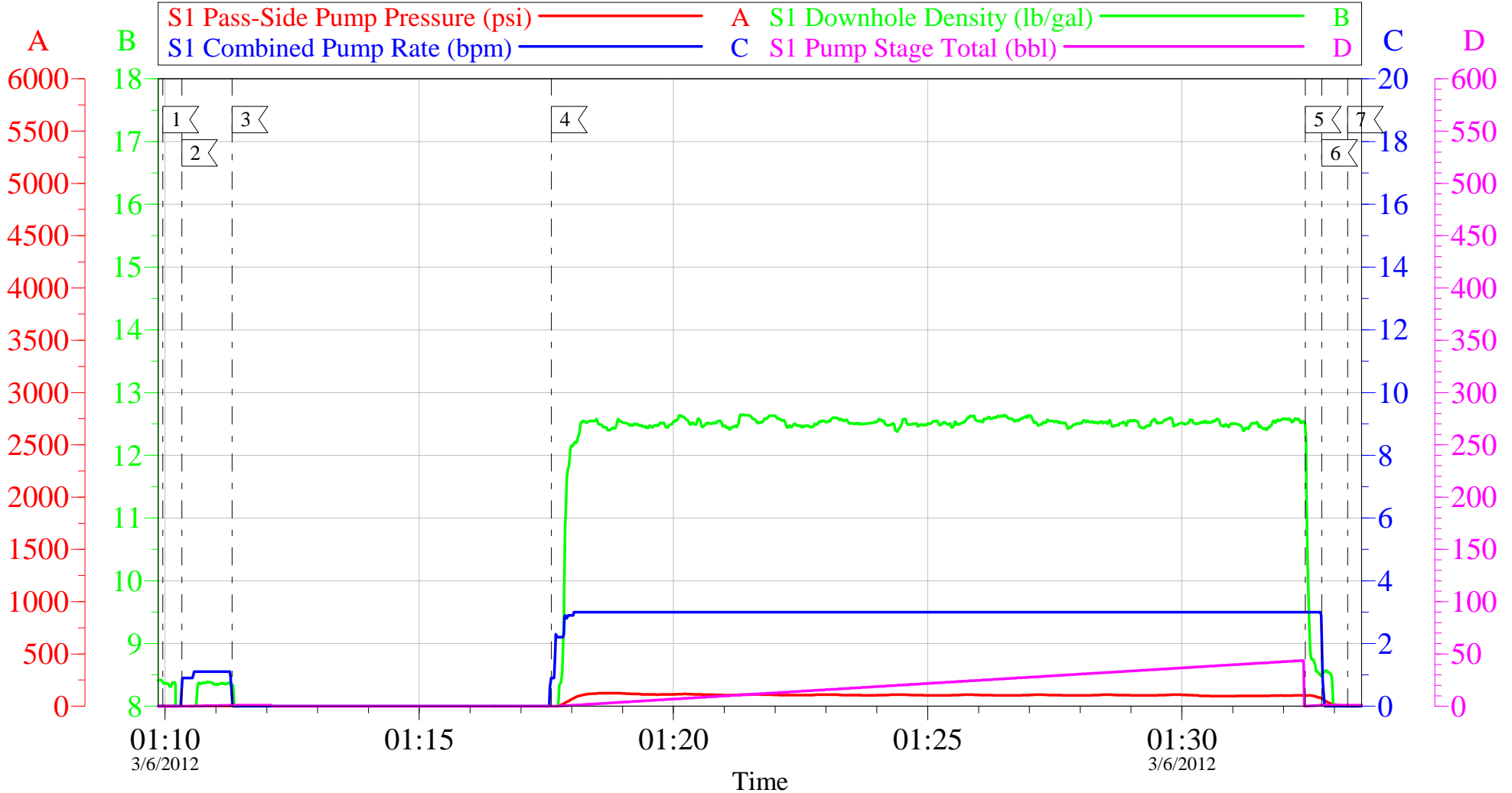
Job Date: 05-Mar-2012
 Job Type: TOPOUT
 Cement Supervisor: JEREMY YOUNG

Sales Order #: 9325902
 ADC Used: YES
 Elite #6: BRENDAN BURKE

OptiCem v6.4.10
 05-Mar-12 23:10

OXY - CC 697-05-63A

TOPOUT #2

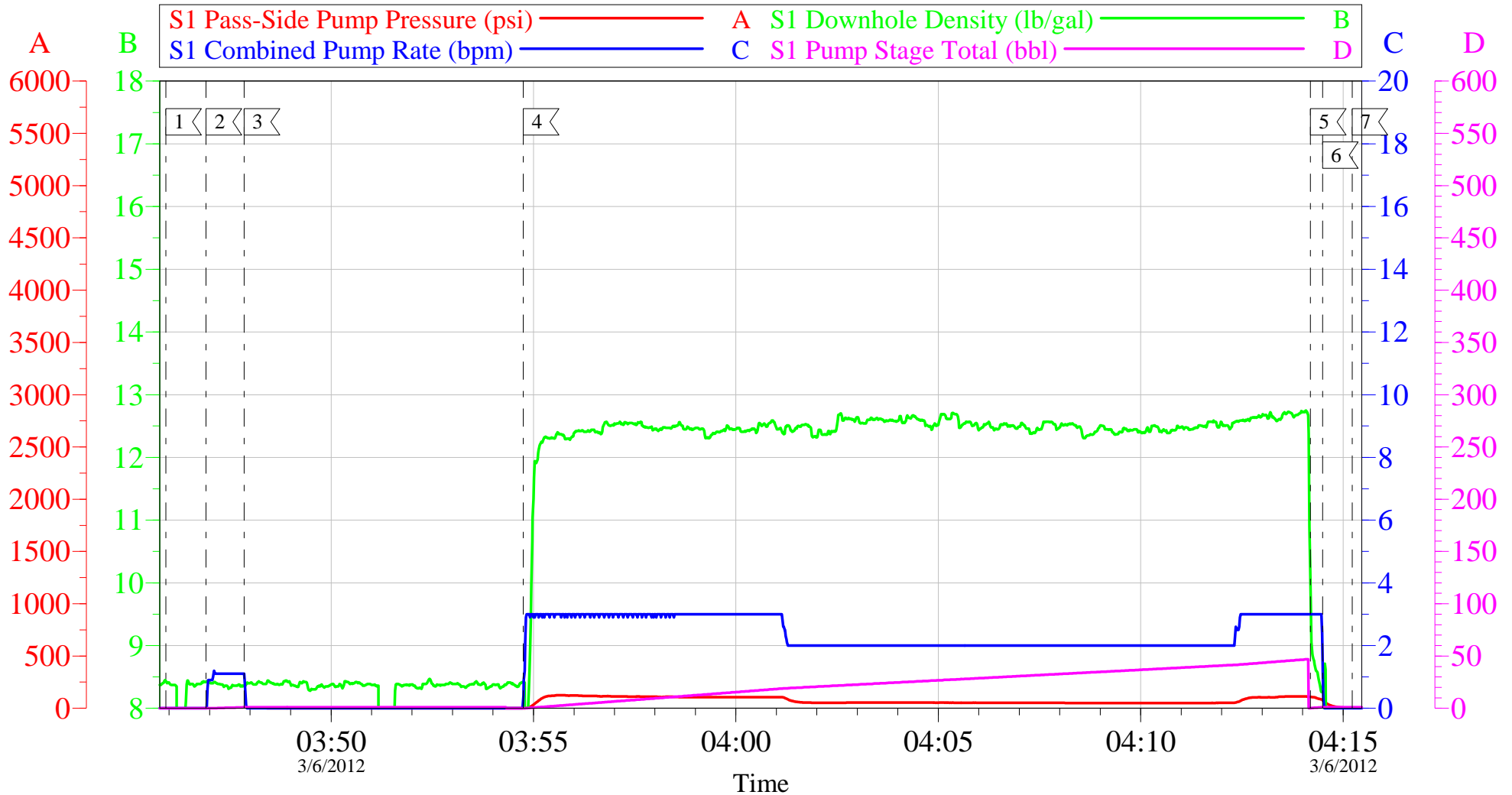


1	START JOB	01:09:57	2	PUMP WATER AHEAD	01:10:20	3	SHUTDOWN	01:11:19
4	PUMP CEMENT	01:17:36	5	PUMP WATER BEHIND	01:32:26	6	SHUTDOWN	01:32:45
7	END JOB	01:33:16						

Customer: OXY	Job Date: 05-Mar-2012	Sales Order #: 9325902
Well Description: CC 697-05-63A	Job Type: TOPOUT	ADC Used: YES
Company Rep: VICTOR BENEVIDES	Cement Supervisor: JEREMY YOUNG	Elite #6: BRENDAN BURKE

OXY - CC 697-05-63A

TOPOUT #3



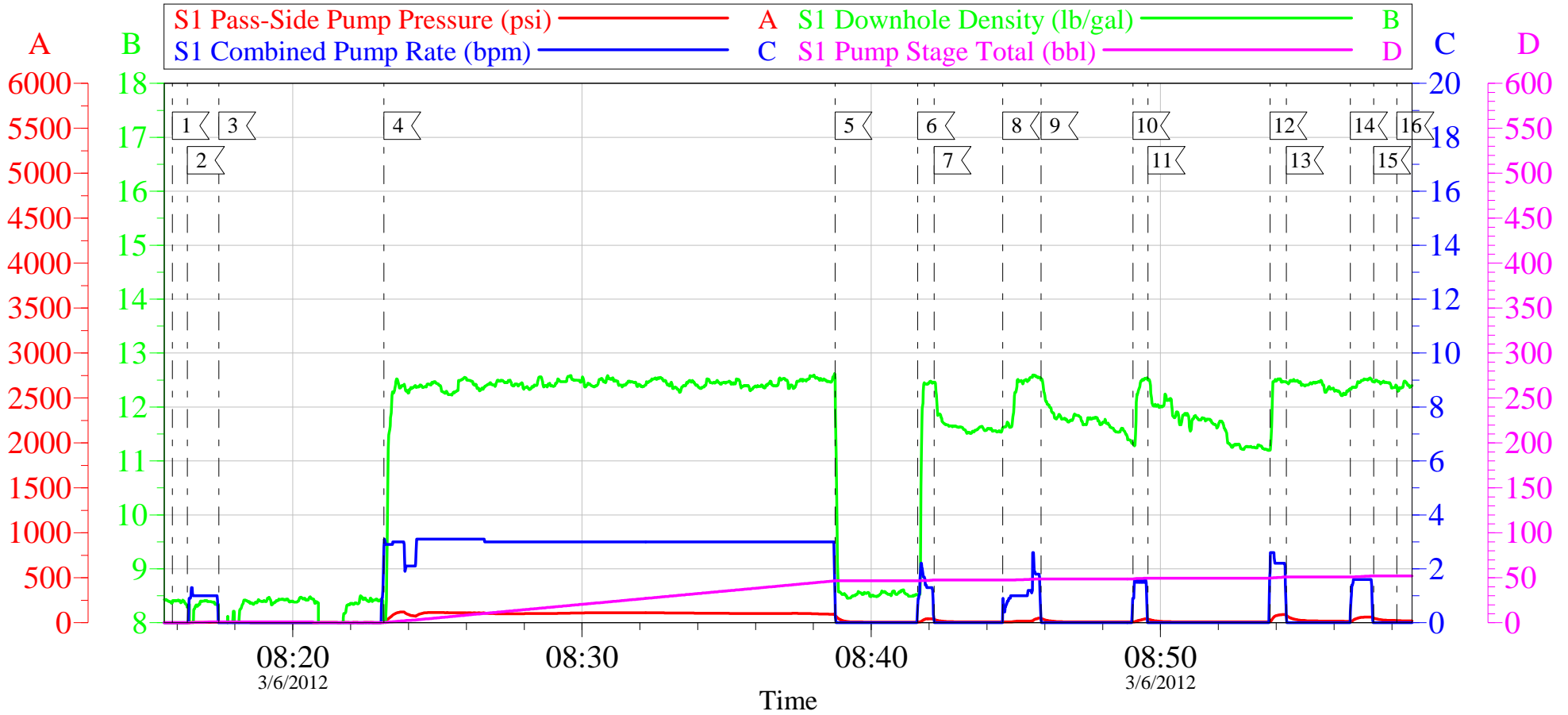
Local Event Log

1	START JOB	03:45:55	2	PUMP WATER AHEAD	03:46:55	3	SHUTDOWN	03:47:51
4	PUMP CEMENT	03:54:45	5	PUMP WAER BEHIND	04:14:12	6	SHUTDOWN	04:14:30
7	END JOB	04:15:13						

Customer: OXY	Job Date: 06-Mar-2012	Sales Order #: 9325902
Well Description: CC 697-05-63A	Job Type: TOPOUT	ADC Used: YES
Company Rep: VICTOR BENEVIDES	Cement Supervisor: JEREMY YOUNG	Elite #6: BRENDAN BURKE

OXY - CC 697-05-63A

TOPOUT #4



1	START JOB	08:15:50	2	PUMP WATER AHEAD	08:16:21	3	SHUTDOWN	08:17:26
4	PUMP CEMENT	08:23:09	5	SHUTDOWN	08:38:45	6	RESUME PUMPING	08:41:36
7	SHUTDOWN	08:42:10	8	RESUME PUMPING	08:44:32	9	SHUTDOWN	08:45:52
10	RESUME PUMPING	08:49:03	11	SHUTDOWN	08:49:34	12	RESUME PUMPING	08:53:47
13	SHUTDOWN	08:54:21	14	RESUME PUMPING	08:56:34	15	SHUTDOWN	08:57:22
16	END JOB	08:58:10						

Customer: OXY	Job Date: 06-Mar-2012	Sales Order #: 9325902
Well Description: CC 697-05-63A	Job Type: TOPOUT	ADC Used: YES
Company Rep: VICTOR BENEVIDES	Cement Supervisor: JEREMY YOUNG	Elite #6: BRENDAN BURKE

HALLIBURTON

Water Analysis Report

Company: OXY

Date: 3/5/2012

Submitted by: JEREMY YOUNG

Date Rec.: _____

Attention: LAB

S.O.# 9325902

Lease CC

Job Type: SURFACE

Well # 697-05-63A

Specific Gravity	<i>MAX</i>	1
pH	<i>8</i>	7
Potassium (K)	<i>5000</i>	200 Mg / L
Calcium (Ca)	<i>500</i>	120 Mg / L
Iron (FE2)	<i>300</i>	0 Mg / L
Chlorides (Cl)	<i>3000</i>	0 Mg / L
Sulfates (SO ₄)	<i>1500</i>	UNDER 200 Mg / L
Chlorine (Cl ₂)		0 Mg / L
Temp	<i>40-80</i>	62 Deg
Total Dissolved Solids		650 Mg / L

Respectfully: JEREMY YOUNG

Title: CEMENTING SUPERVISOR

Location: Grand Junction, CO

NOTICE: This report is limited to the described sample tested. Any person using or relying on this report agrees that Halliburton shall not be liable for any loss or damage whether due to act or omission resulting from such report or its

Sales Order #: 9325902	Line Item: 10	Survey Conducted Date: 3/6/2012
Customer: OXY GRAND JUNCTION EBUSINESS		Job Type (BOM): CMT SURFACE CASING BOM
Customer Representative:		API / UWI: (leave blank if unknown) 05-045-20725
Well Name: Cascade Creek		Well Number: 697-05-63A
Well Type: Development Well	Well Country: United States of America	
H2S Present: No	Well State: Colorado	Well County: Garfield

Dear Customer,

We hope that you were satisfied with the service quality of this job performed by Halliburton. It is the aim of our management and service personnel to deliver equipment and service of a standard unmatched in the service sector of the energy industry.

Please take the time to let us know if our performance met with your satisfaction. Please be as critical as possible to ensure we constantly improve our service. Your comments are of great value to us and are intended for the exclusive use of Halliburton.

CUSTOMER SATISFACTION SURVEY

CATEGORY	CUSTOMER SATISFACTION RESPONSE	
Survey Conducted Date	The date the survey was conducted	3/6/2012
Survey Interviewer	The survey interviewer is the person who initiated the survey.	JEREMY YOUNG (HX37077)
Customer Participation	Did the customer participate in this survey? (Y/N)	No
Customer Representative	Enter the Customer representative name	
HSE	Was our HSE performance satisfactory? Circle Y or N	
Equipment	Were you satisfied with our Equipment? Circle Y or N	
Personnel	Were you satisfied with our people? Circle Y or N	
Customer Comment	Customer's Comment	

CUSTOMER SIGNATURE

Sales Order #: 9325902	Line Item: 10	Survey Conducted Date: 3/6/2012
Customer: OXY GRAND JUNCTION EBUSINESS		Job Type (BOM): CMT SURFACE CASING BOM
Customer Representative:		API / UWI: (leave blank if unknown) 05-045-20725
Well Name: Cascade Creek		Well Number: 697-05-63A
Well Type: Development Well	Well Country: United States of America	
H2S Present: No	Well State: Colorado	Well County: Garfield

KEY PERFORMANCE INDICATORS

General	
Survey Conducted Date	3/6/2012
The date the survey was conducted	

Cementing KPI Survey	
Type of Job	0
Select the type of job. (Cementing or Non-Cementing)	
Select the Maximum Deviation range for this Job	Vertical
What is the highest deviation for the job you just completed? This may not be the maximum well deviation.	
Total Operating Time (hours)	10
Total Operating Hours Including Rig-up, Pumping, Rig-down. Enter in decimal format.	
HSE Incident, Accident, Injury	No
HSE Incident, Accident, Injury. This should be recordable incidents only.	
Was the job purpose achieved?	Yes
Was the job delivered correctly as per customer agreed design?	
Operating Hours (Pumping Hours)	8
Total number of hours pumping fluid on this job. Enter in decimal format.	
Customer Non-Productive Rig Time (hrs)	0
Lost time due to Halliburton in the start, execution, or completion of an ordered service or product, or delays in a follow-on service. Enter in decimal format. 0 if none.	
Type of Rig Classification Job Was Performed	Drilling Rig (Portable)
Type Of Rig (classification) Job Was Performed On	
Number Of JSAs Performed	10
Number Of Jsas Performed	
Number of Unplanned Shutdowns	0
Unplanned shutdown is when injection stops for any period of time.	
Was this a Primary Cement Job (Yes / No)	Yes

Sales Order #: 9325902	Line Item: 10	Survey Conducted Date: 3/6/2012
Customer: OXY GRAND JUNCTION EBUSINESS		Job Type (BOM): CMT SURFACE CASING BOM
Customer Representative:		API / UWI: (leave blank if unknown) 05-045-20725
Well Name: Cascade Creek		Well Number: 697-05-63A
Well Type: Development Well	Well Country: United States of America	
H2S Present: No	Well State: Colorado	Well County: Garfield

Primary Cement Job= Casing job, Liner job, or Tie-back job.	
Did We Run Wiper Plugs? Did We Run Top And Bottom Casing Wiper Plugs?	Top
Mixing Density of Job Stayed in Designed Density Range (0-100%) Density Range defined as +/- .20 ppg. Calculation: Total BBLs cement mixed at designed density divided by total BBLs of cement multiplied by 100	95
Was Automated Density Control Used? Was Automated Density Control (ADC) Used ?	Yes
Pump Rate (percent) of Job Stayed At Designed Pump Rate Pump Rate range defined as +/- 1bbl/min. Calculation: Total BBLs of fluid pumped at the designed rate divided by Total BBLs of fluid pumped, multiplied by 100	95
Nbr of Remedial Sqz Jobs Rqd - Competition Number Of Remedial Squeeze Jobs Required After Primary Job Performed By Competition	0
Nbr of Remedial Plug Jobs Rqd - HES Number Of Remedial Plug Jobs Needed After Primary Plug Pumped By HES	0
Nbr of Remedial Sqz Jobs Rqd - HES Number Of Remedial Squeeze Jobs Required After Primary Job Performed By HES	0