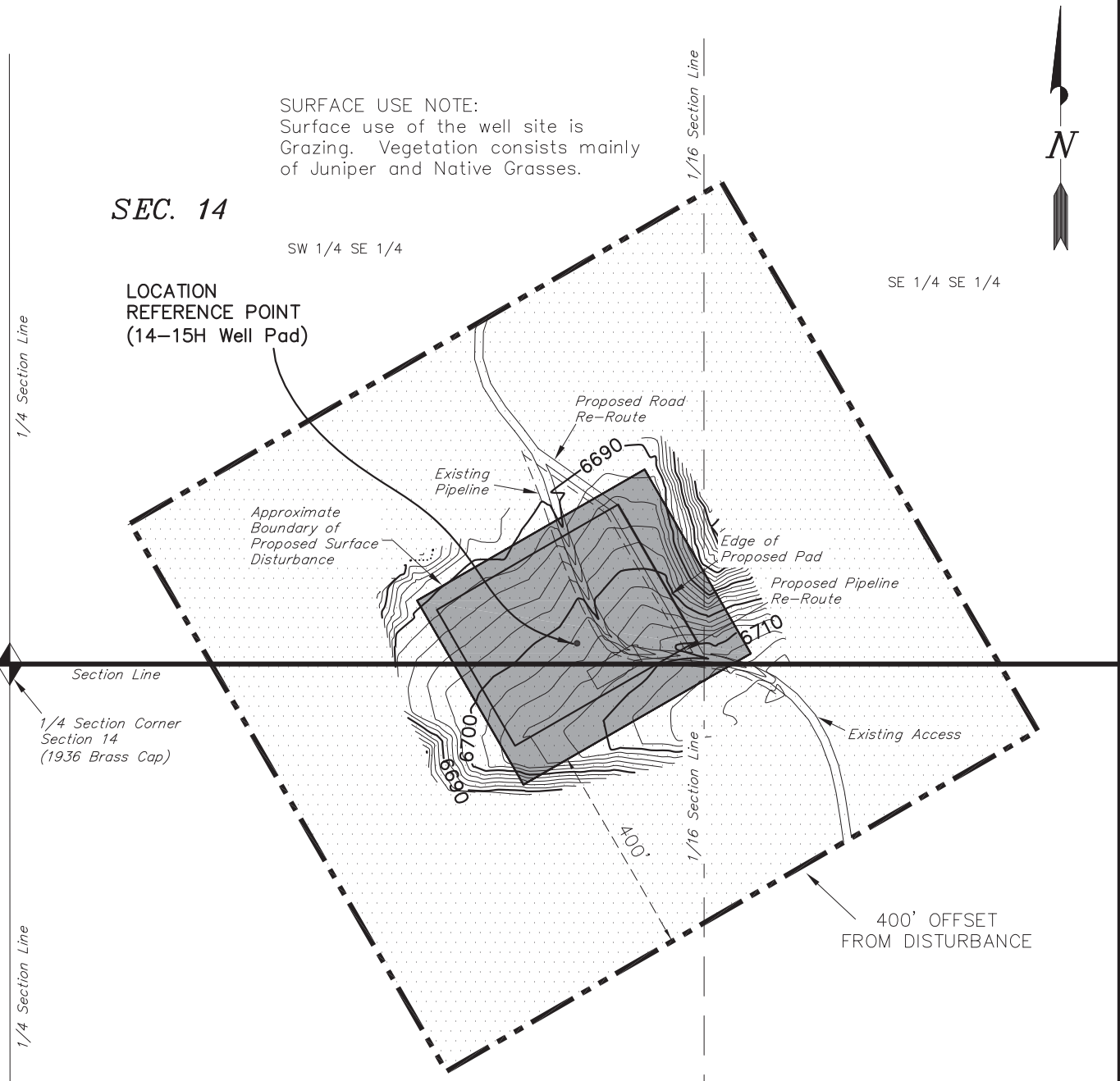


# ROBERT L. BAYLESS, PRODUCER LLC.

## ADDENDUM DRAWING WEAVER RIDGE 14-15H

Pad Location: SWSE SECTION 14, T1S, R104W, 6th P.M.



### Distances from Well Head

WELL	BUILDING	ABOVE GROUND UTILITY	PUBLIC ROAD	RAILROAD
14-15H	N13°E 5.9 MILES	N13°E 5.9 MILES	N13°E 5.9 MILES	N01°E 12.7 MILES



SURVEYED BY: K.S. DATE SURVEYED: 12-15-11  
 DRAWN BY: M.W. DATE DRAWN: 12-29-11  
 SCALE: 1" = 300' REVISED: M.W. - 03-27-12

**Tri State**  
 Land Surveying, Inc.  
 180 NORTH VERNAL AVE. VERNAL, UTAH 84078  
 (435) 781-2501