

# ROBERT L. BAYLESS, PRODUCER LLC.

## PROPOSED LOCATION LAYOUT

### WEAVER RIDGE 14-15H

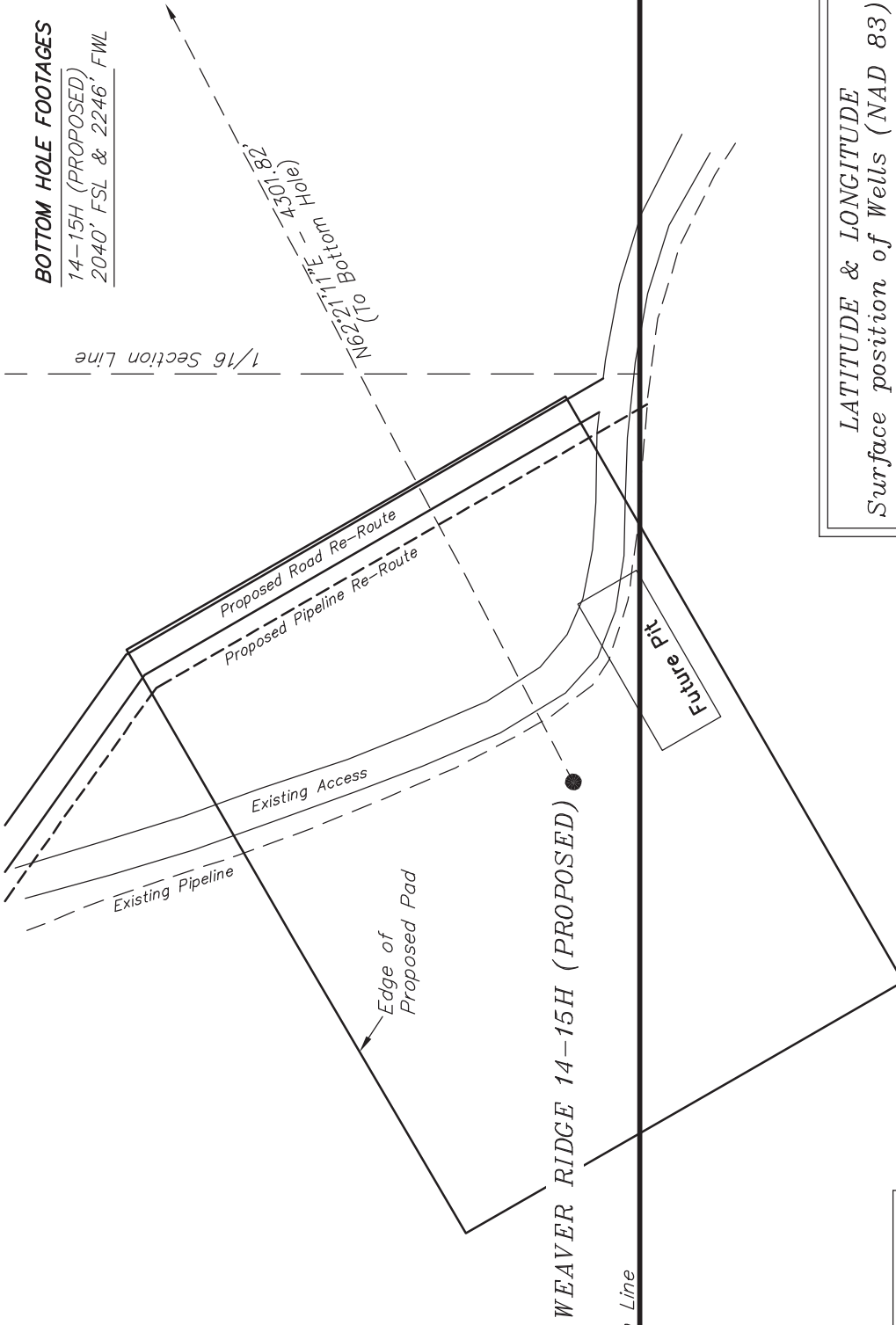
Pad Location: SWSE Section 14, T1S, R104W, 6th P.M.



**TOP HOLE FOOTAGES**

14-15H (PROPOSED)  
39' FSL & 1564' FEL

**BOTTOM HOLE FOOTAGES**  
14-15H (PROPOSED)  
2040' FSL & 2246' FWL



Section Line

**Note:**

Bearings are based on GPS Observations.

**RELATIVE COORDINATES**  
From Top Hole to Bottom Hole

WELL	NORTH	EAST
14-15H	1996'	3811'

**LATITUDE & LONGITUDE**  
Surface position of Wells (NAD 83)

WELL	LATITUDE	LONGITUDE
14-15H	39° 57' 14.67"	109° 01' 55.74"

SURVEYED BY: K.S.	DATE SURVEYED: 12-15-11
DRAWN BY: M.W.	DATE DRAWN: 12-29-11
SCALE: 1" = 100'	REVISED: L.C.S. 03-29-12

**Tri State**  
Land Surveying, Inc.  
(435) 781-2507  
180 NORTH VERNAL AVE. VERNAL, UTAH 84078