



T10N, R59W, 6th P.M.

WHITING OIL & GAS CORP.

Well location, WOLF #35-2613H (TARGET BOTTOM HOLE), located as shown in the NW 1/4 SW 1/4 of Section 26, T10N, R59W, 6th P.M., Weld County, Colorado.

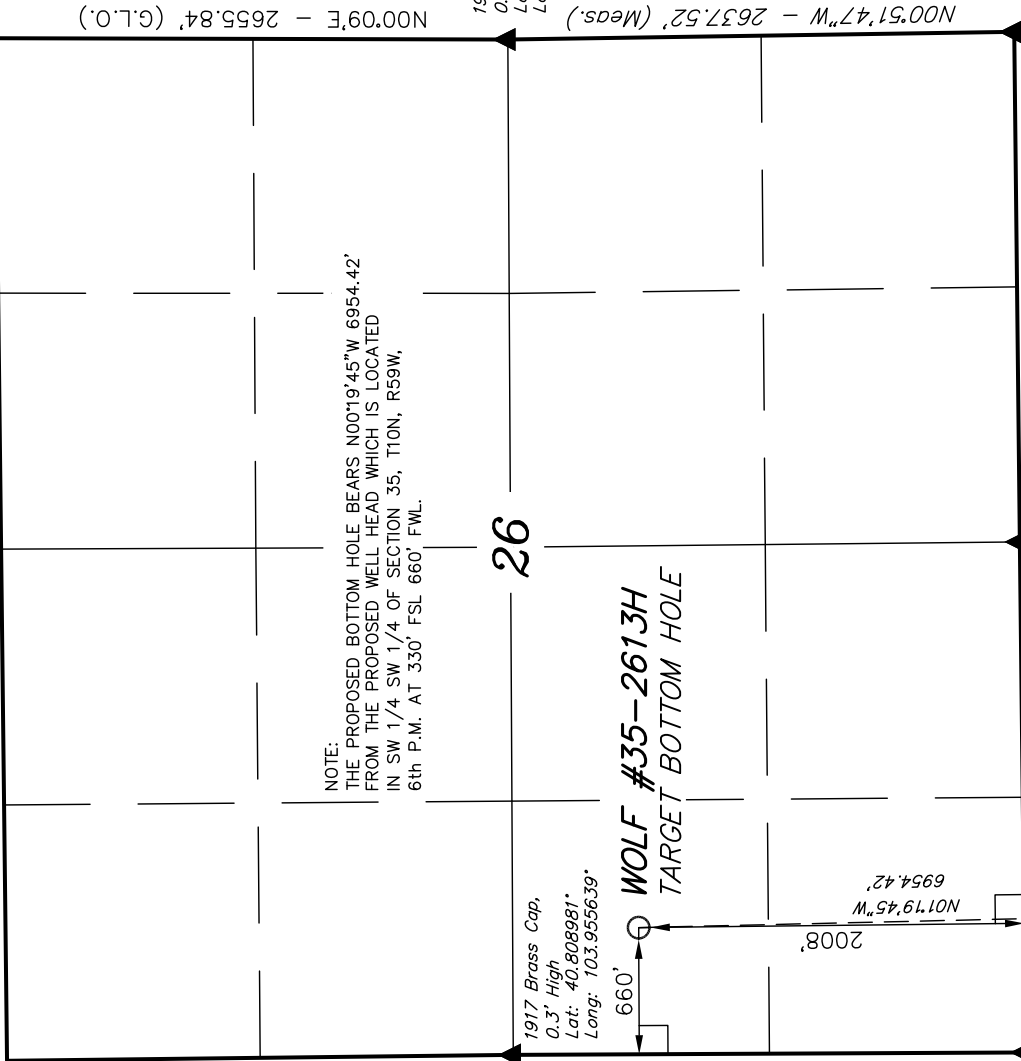
BASIS OF ELEVATION

SPOT ELEVATION LOCATED AT THE NORTHEAST CORNER OF SECTION 15, T9N, R58W, 6th P.M. TAKEN FROM THE RIVER BEND, QUADRANGLE, COLORADO, WELD COUNTY, 7.5 MINUTE QUAD (TOPOGRAPHIC MAP) PUBLISHED BY THE UNITED STATES DEPARTMENT OF THE INTERIOR, GEOLOGICAL SURVEY. SAID ELEVATION IS MARKED AS BEING 4679 FEET.

BASIS OF BEARINGS

BASIS OF BEARINGS IS A G.P.S. OBSERVATION.

S89°20'W - 5331.48' (G.L.O.)



1917 Brass Cap, 0.3' High  
Lat: 40.808981°  
Long: 103.955639°

1917 Brass Cap, 0.8' High  
Lat: 40.801839°  
Long: 103.936386°

1917 Brass Cap, 1.0' High  
Lat: 40.801750°  
Long: 103.945978°

Surface Location

LEGEND:

└─ = 90° SYMBOL

● = PROPOSED WELL HEAD.

▲ = SECTION CORNERS LOCATED.

Surface Location

LEGEND:

└─ = 90° SYMBOL

● = PROPOSED WELL HEAD.

▲ = SECTION CORNERS LOCATED.

NAD 83 (TARGET BOTTOM HOLE)

LATITUDE = 40°48'25.89" (40.807192)

LONGITUDE = 103°57'11.67" (103.953242)

NAD 27 (TARGET BOTTOM HOLE)

LATITUDE = 40°48'25.94" (40.807206)

LONGITUDE = 103°57'09.86" (103.952739)

SCALE

1" = 1000'

PARTY

D.N. D.S. G.W. B.L.B.

WEATHER

COLD

DATE SURVEYED: 01-26-12

DATE DRAWN: 02-10-12

REFERENCES

G.L.O. PLAT

FILE

WHITING OIL & GAS CORP.

UINTAH ENGINEERING & LAND SURVEYING

85 SOUTH 200 EAST - VERNAL, UTAH 84078

(435) 789-1017