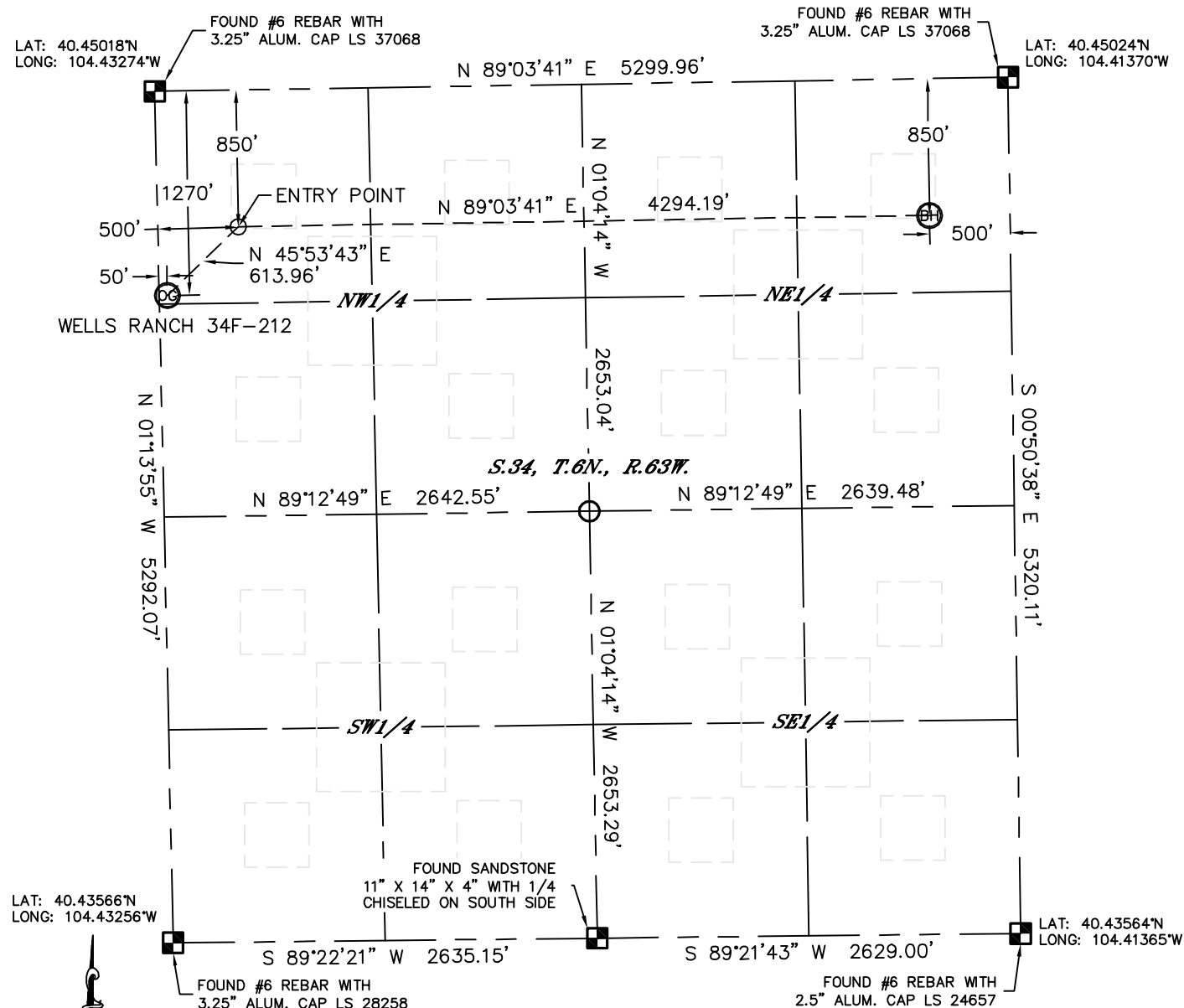


Lat40°, Inc. 1635 Foxtrail Drive, Suite 325 Loveland, CO 970-776-3321

WELL LOCATION CERTIFICATE

THIS MAP DOES NOT REPRESENT A BOUNDARY SURVEY

SECTION: 34
TOWNSHIP: 6N
RANGE: 63W



In accordance with a request from AI Bragg with PDC ENERGY Lat40', Inc. has determined the surface location of the WELLS RANCH 34F-212 to be 1270' from the NORTH line and 50' from the WEST line and the bottom hole to be 850' from the NORTH line and 500' from the EAST line as measured at right angles from the section lines of Section 34, Township 6 North, Range 63 West of the Sixth Principal Meridian, County of Weld, State of Colorado.

I hereby state that this Well Location Certificate was prepared by me, or under my direct supervision, that the fieldwork was completed on 2/16/2012, for and on behalf of PDC ENERGY. That this is not a Land Survey Plat or an Improvement Survey Plat, and that it is not to be relied upon for establishment of fence, building, or other future improvement lines.

NOTE:

- 1) Bearings shown are Grid Bearings of the Colorado State Plane Coordinate System, North Zone, North American Datum 1983/2007. The lineal dimensions as contained herein are based upon the "U.S. Survey Foot."
- 2) Ground elevations are based on an observed GPS elevation (NAVD 1988 DATUM).
- 3) IMPROVEMENTS: See LOCATION DRAWING for all visible improvements within 400' of disturbed area.
- 4) SURFACE USE: RANGELAND
- 5) INSTRUMENT OPERATOR: ADAM KELLY

SURFACE LOCATION

LAT: 40.44670°N
LONG: 104.43252°W
PDOP: 1.1
ELEV: 4805'
1/4,1/4: NW1/4NW1/4
NEAREST PROPERTY LINE: 50' W

BOTTOM HOLE

LAT: 40.44791°N
LONG: 104.41549°W



ENTRY POINT

LAT: 40.44786°N
LONG: 104.43092°W

NOTE

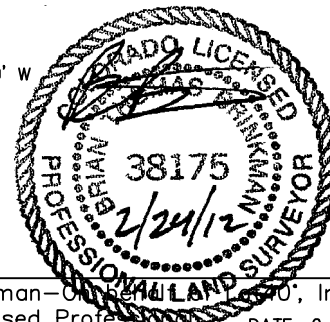
According to Colorado law, you must commence any legal action based upon any defect in this W.L.C. within three years after you discover such defect. In no event, may any action based upon any defect in this survey be commenced more than ten years after the date of the certificate shown hereon. (13-80-105 C.R.S.)

LEGEND

-  = ALIQUOT MONUMENT AS DESCRIBED
 = CALCULATED POSITION

Brian T. Brinkman—Colorado Licensed Professional Land Surveyor No. 38175
DATE: 2/24
PROJECT#: 1

DATE: 2/24/2012
PROJECT#: 2011018



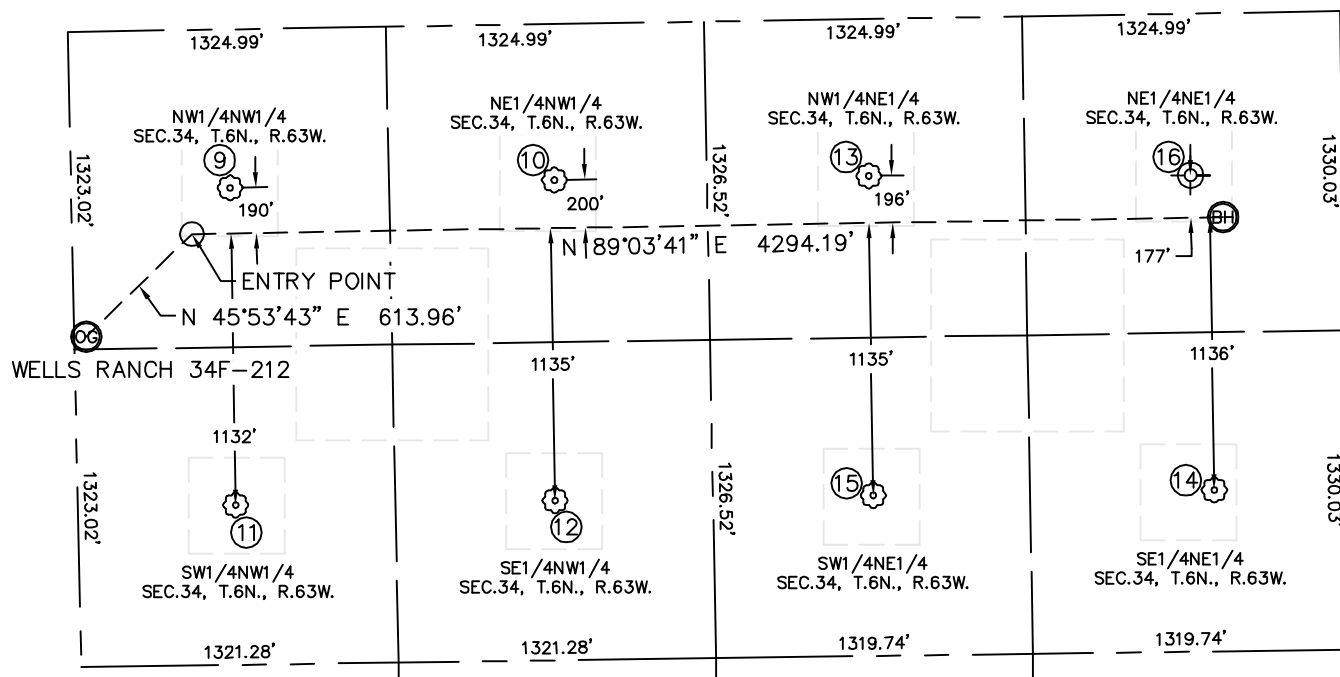


Lat40°, Inc. 1635 Foxtrail Drive, Suite 325 Loveland, CO 970-776-3321

SITE SKETCH

WELLS RANCH 34F-212

SECTION: 34
TOWNSHIP: 6N
RANGE: 63W



⑨

WELLS RANCH 11-34
NW1/4NW1/4
660' FNL
663' FWL
LAT-40.44838°N
LONG-104.43034°W
PDOP: 1.8
ELEV: 4812'

⑩

WELLS RANCH 21-34
NE1/4NW1/4
650' FNL
2013' FWL
LAT-40.44842°N
LONG-104.42549°W
PDOP: 1.8
ELEV: 4823'

⑪

WELLS RANCH 12-34
SW1/4NW1/4
1982' FNL
657' FWL
LAT-40.44475°N
LONG-104.43031°W
PDOP: 1.8
ELEV: 4794'

⑫

WELLS RANCH 22-34
SE1/4NW1/4
1985' FNL
1988' FWL
LAT-40.44476°N
LONG-104.42553°W
PDOP: 1.3
ELEV: 4791'

⑬

WELLS RANCH 31-34
NW1/4NE1/4
654' FNL
1973' FEL
LAT-40.44843°N
LONG-104.42078°W
PDOP: 1.3
ELEV: 4831'

⑭

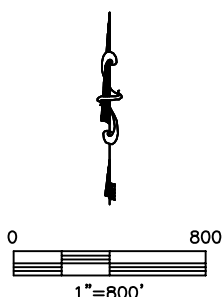
WELLS RANCH 42-34
SE1/4NE1/4
1986' FNL
554' FEL
LAT-40.44479°N
LONG-104.41567°W
PDOP: 1.4
ELEV: 4819'

⑮

WELLS RANCH 32-34
SW1/4NE1/4
1985' FNL
1974' FEL
LAT-40.44477°N
LONG-104.42077°W
PDOP: 1.9
ELEV: 4811'

⑯

WELLS RANCH 41-34
(Drilled & Abandoned)
NE1/4NE1/4
668' FNL (COGCC)
666' FEL (COGCC)
LAT-40.44839°N (COGCC)
LONG-104.41597°W (COGCC)
PDOP: N/A
ELEV: 4830' (COGCC)



DATE: 2/24/2012
PROJECT#: 2011018