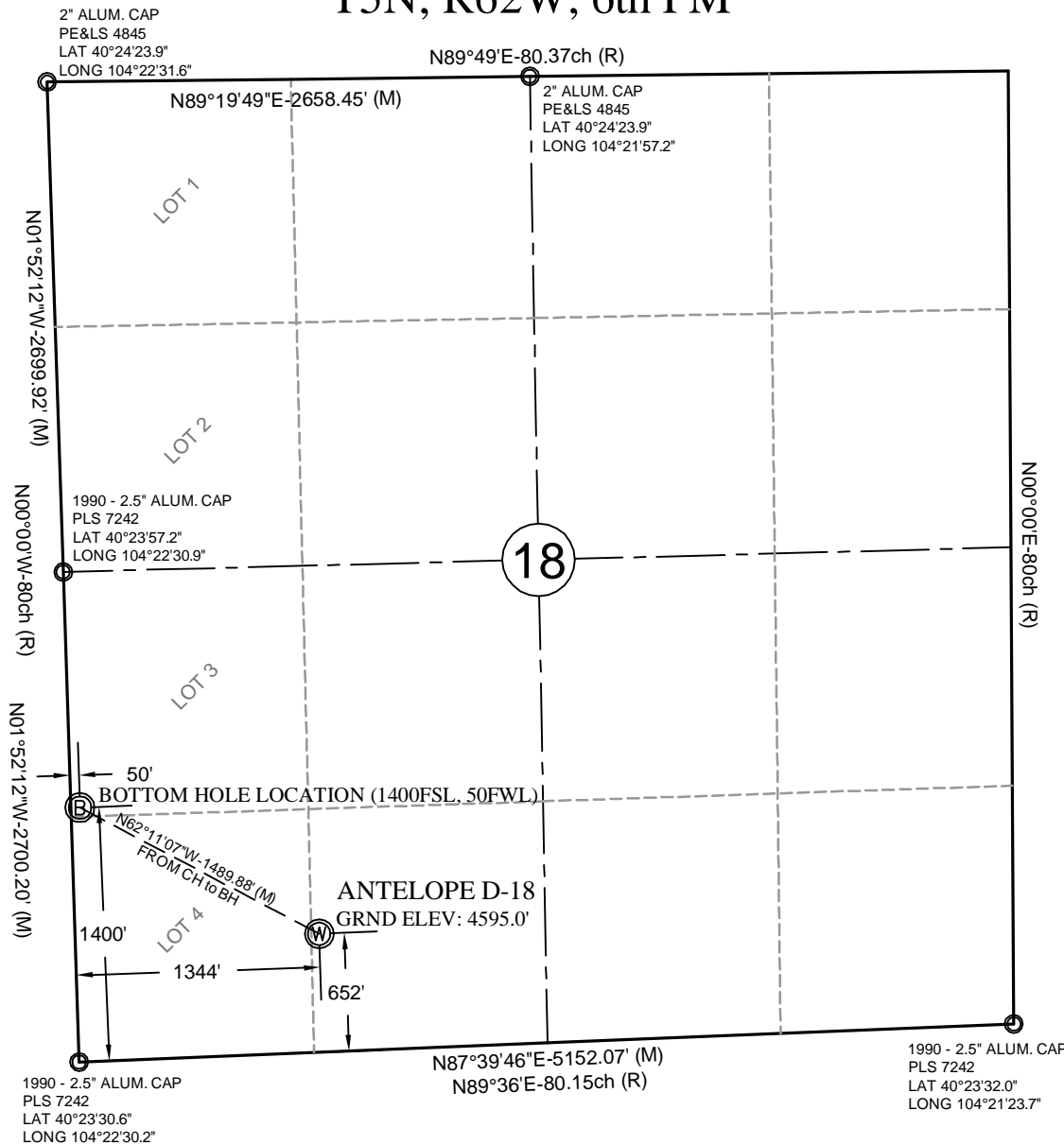


# T5N, R62W, 6th PM



NAD83 SURFACE LOC.	NAD83 BOTTOM HOLE LOC.
LAT 40°23'37.4" (40.393721)	LAT 40°23'44.4" (40.395674)
LONG 104°22'13.0" (104.370282)	LONG 104°22'29.9" (104.374980)
STATE PLANE (COLORADO NORTH)	STATE PLANE (COLORADO NORTH)
N=1,388,278 ft E=3,314,659 ft	N=1,388,972 ft E=3,313,341 ft

## NOTES:

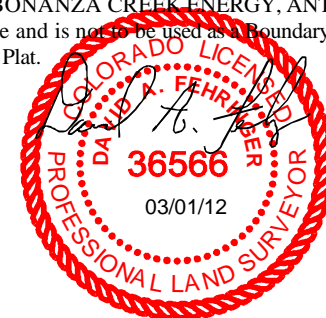
- INDICATES FOUND MONUMENT AS DESCRIBED
- ELEVATIONS BASED ON NAVD88 DERIVED FROM STATIC REDUCTION CALCULATED FROM GEOID 03.
- THE BASIS OF BEARING IS NAD83 GRID DERIVED FROM STATIC REDUCTION
- (M) = MEASURED DATA; (R) GLO PLAT DATA OF RECORD
- GPS OPERATOR: DAVE FEHRINGER
- PDOP VALUE = 2.1
- BEARING FROM SURFACE LOCATION TO SW CORNER SECTION 18: S61°53'07"W - 1498.8'

## REFERENCE STAKES:

- 175' NORTH - 4597.7'  
200' NORTH - 4598.4'  
175' WEST - 4595.9'  
200' WEST - 4599.3'

## CERTIFICATE OF SURVEYOR

I, David A. Fehringer, of Fremont Engineering & Surveying, from Lander, Wyoming hereby certify that this map was made from notes taken during an actual survey by myself on FEBRUARY 23, 2012, for and on behalf of LowhamWalsh and Bonanza Creek Energy. That this plat correctly shows the drilling location of BONANZA CREEK ENERGY, ANTELOPE D-18 to the best of my knowledge and is not to be used as a Boundary Survey or Improvement Survey Plat.



205 S. THIRD ST.  
LANDER, WY 82520  
(307) 335-8466 (O)  
(307) 335-7343 (F)

Drawn By: DAF

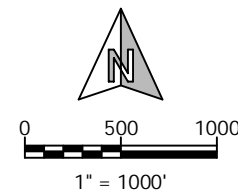
Checked By: DAF

Date: 3/1/2012

Revision:

Date:

Sheet: 1 of 1



**BONANZA CREEK ENERGY**  
**ANTELOPE D-18**  
**WELL LOCATION CERTIFICATE**  
**652' FSL, 1344' FWL,**  
**ANTELOPE D-18 PAD**  
**SE¼SW¼, SECTION 18, T5N, R62W, 6th PM**  
**WELD COUNTY, COLORADO**