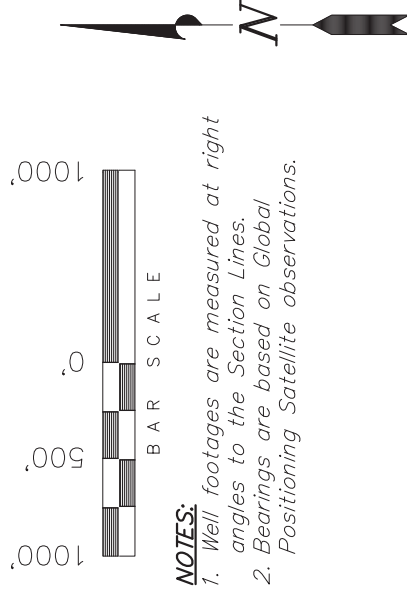


T1S, R104W, 6TH P.M.

ROBERT L. BAYLESS, PRODUCER LLC.

TARGET BOTTOM HOLE, WEAVER RIDGE
23-7H, LOCATED AS SHOWN IN THE NW
1/4 NW 1/4 OF SECTION 24, T1S,
R104W, 6TH P.M., RIO BLANCO COUNTY,
COLORADO.



NOTES:

1. Well footages are measured at right angles to the Section Lines.
2. Bearings are based on Global Positioning Satellite observations.

THIS IS TO CERTIFY THAT THE ABOVE PLAT WAS PREPARED FROM FIELD NOTES OF SURVEYS MADE BY ME OR UNDER MY SUPERVISION, THE LOCATION HAS BEEN STAKED ON THE GROUND AS SHOWN ON THE PLAT, AND THAT THE SAME ARE TRUE AND CORRECT TO THE BEST OF MY KNOWLEDGE AND BELIEF.

03-27-12 RT
S # 30125

REGISTERED LAND SURVEYOR
REGISTRATION NO. 30125
STATE OF CALIFORNIA

TRI STATE LAND SURVEYING & CONSULTING

180 NORTH VERNAL AVE. - VERNAL, UTAH 84078
(435) 781-2501

DATE SURVEYED: _____

12-14-11

SURVEYED BY: PAUL

DATE DRAWN:

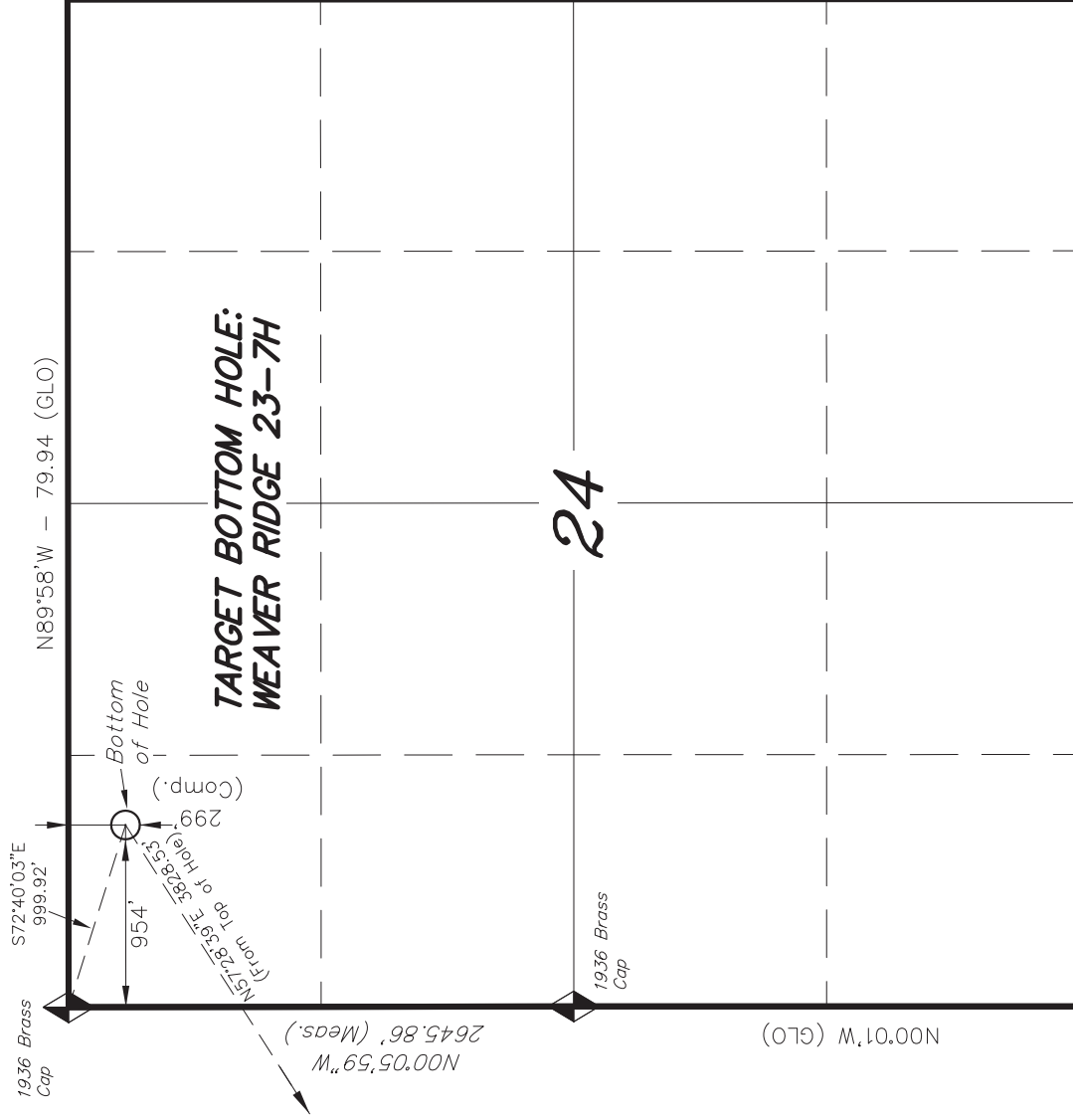
12-28-11

DRAWN BY: R.B.T.

REVISÉ:

03-27-12 - M.W.

SCALE: 1" = 1000'



= SECTION CORNERS LOCATED

NAD 83 (BOTTOM HOLE)

LATITUDE = 39°57'11.34"
(39.953149)

LONGITUDE = 109°01'23.41"
(109.023170)

BASIS OF ELEV; U.S.G.S. 7-1/2 min
QUAD (WEAVER RIDGE)