

ROBERT L. BAYLESS, PRODUCER LLC.

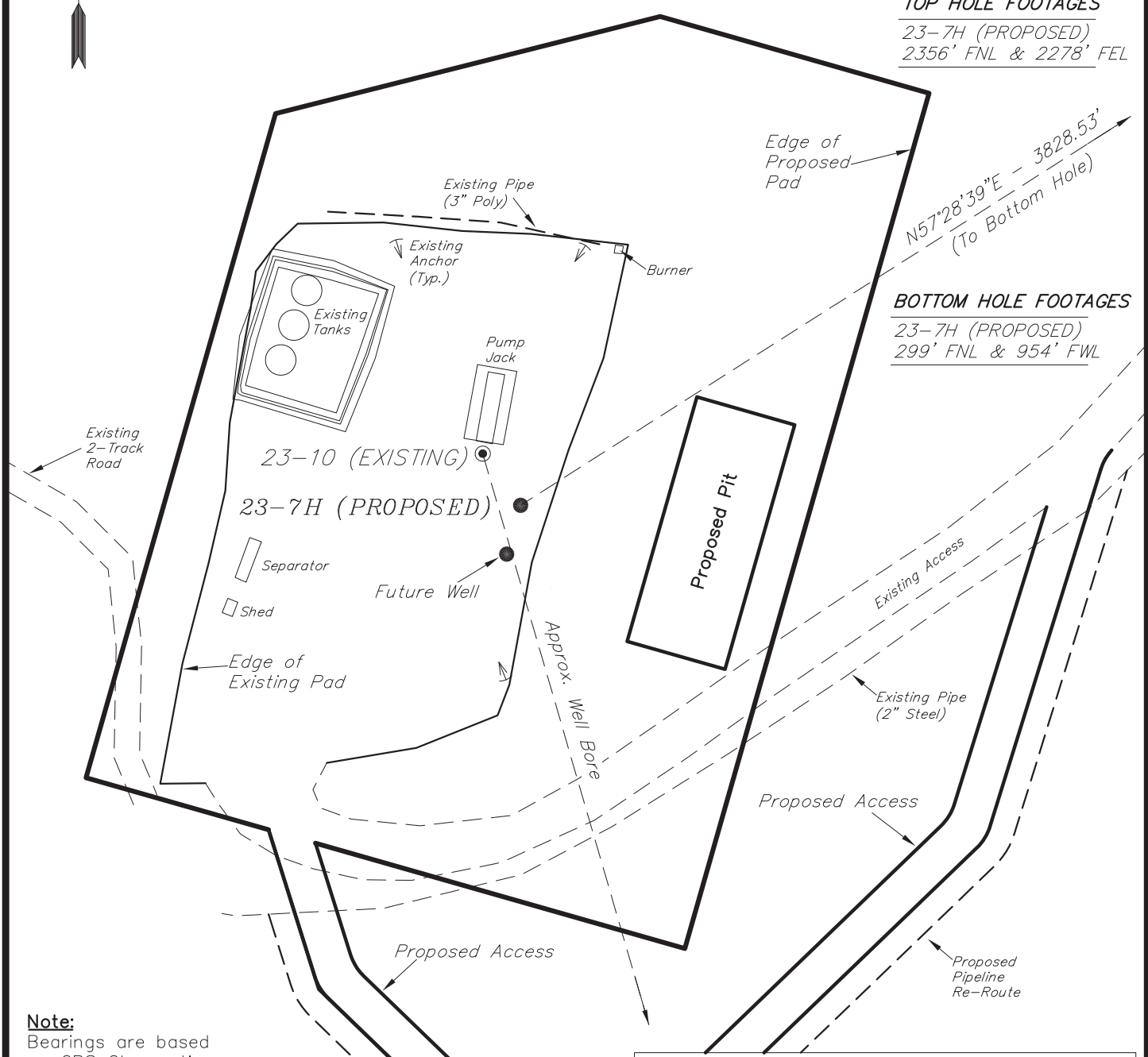
WELL PAD INTERFERENCE PLAT WEAVER RIDGE 23-10 (Existing Well) WEAVER RIDGE 23-7H (Proposed Well)

Pad Location: SWNE Section 23, T1S, R104W, 6th P.M.



TOP HOLE FOOTAGES
23-7H (PROPOSED)
2356' FNL & 2278' FEL

BOTTOM HOLE FOOTAGES
23-7H (PROPOSED)
299' FNL & 954' FWL



Note:
Bearings are based on GPS Observations.

RELATIVE COORDINATES From Top Hole to Bottom Hole		
WELL	NORTH	EAST
23-7H	2,058'	3,228'

LATITUDE & LONGITUDE Surface position of Wells (NAD 83)		
WELL	LATITUDE	LONGITUDE
23-10	39° 56' 51.21"	109° 02' 05.04"
23-7H	39° 56' 51.00"	109° 02' 04.85"

SURVEYED BY:	PAUL	DATE SURVEYED:	12-14-11
DRAWN BY:	R.B.T.	DATE DRAWN:	12-28-11
SCALE:	1" = 60'	REVISED:	M.W. - 03-27-12

Tri State (435) 781-2501
Land Surveying, Inc.
180 NORTH VERNAL AVE. VERNAL, UTAH 84078