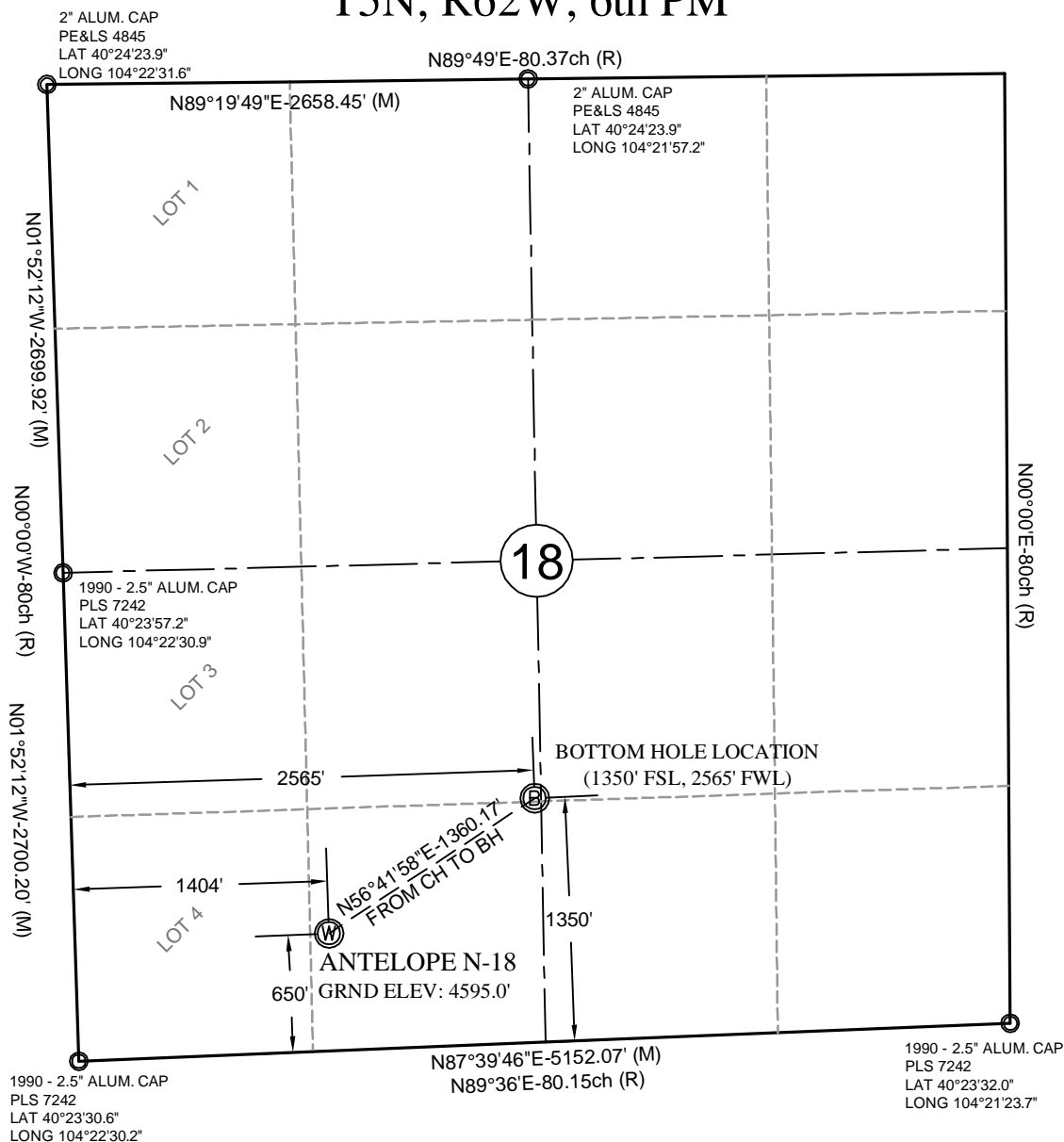


# T5N, R62W, 6th PM



**NAD83  
SURFACE LOC.**  
LAT 40°23'37.4"  
(40.393721)  
LONG 104°22'12.2"  
(104.370067)

STATE PLANE  
(COLORADO NORTH)  
N=1,388,278 ft  
E=3,314,719 ft

**NAD83  
BOTTOM HOLE LOC.**  
LAT 40°23'44.6"  
(40.395731)  
LONG 104°21'57.4"  
(104.365952)

STATE PLANE  
(COLORADO NORTH)  
N=1,389,025 ft  
E=3,315,855 ft

## NOTES:

1. **●** INDICATES FOUND MONUMENT AS DESCRIBED
2. ELEVATIONS BASED ON NAVD88 DERIVED FROM STATIC REDUCTION CALCULATED FROM GEOID 03.
3. THE BASIS OF BEARING IS NAD83 GRID DERIVED FROM STATIC REDUCTION
4. (M) = MEASURED DATA; (R) GLO PLAT DATA OF RECORD
5. GPS OPERATOR: DAVE FEHRINGER
6. PDOP VALUE = 2.1
7. BEARING FROM SURFACE LOCATION TO SW CORNER SECTION 18:  
S62°54'10"W - 1552.5'

## REFERENCE STAKES:

175' NORTH - 4597.8'  
200' NORTH - 4598.0'  
235' WEST - 4595.9'  
260' WEST - 4599.3'

## CERTIFICATE OF SURVEYOR

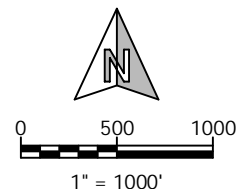
I, David A. Fehringer, of Fremont Engineering & Surveying, from Lander, Wyoming hereby certify that this map was made from notes taken during an actual survey by myself on FEBRUARY 23, 2012, for and on behalf of LowhamWalsh and Bonanza Creek Energy. That this plat correctly shows the drilling location of BONANZA CREEK ENERGY, ANTELOPE N-18 to the best of my knowledge and is not to be used as a Boundary Survey or Improvement Survey Plat.



**LOWHAM  
WALSH LLC**  
Engineering & Environmental Services

205 S. THIRD ST.  
LANDER, WY 82520  
(307) 335-8466 (O)  
(307) 335-7343 (F)

Drawn By: DAF  
Checked By: DAF  
Date: 3/1/2012  
Revision:  
Date:  
Sheet: 1 of 1



**BONANZA CREEK ENERGY  
ANTELOPE N-18  
WELL LOCATION CERTIFICATE  
650' FSL, 1404' FWL,  
ANTELOPE D-18 PAD  
SE¼SW¼, SECTION 18, T5N, R62W, 6th PM  
WELD COUNTY, COLORADO**