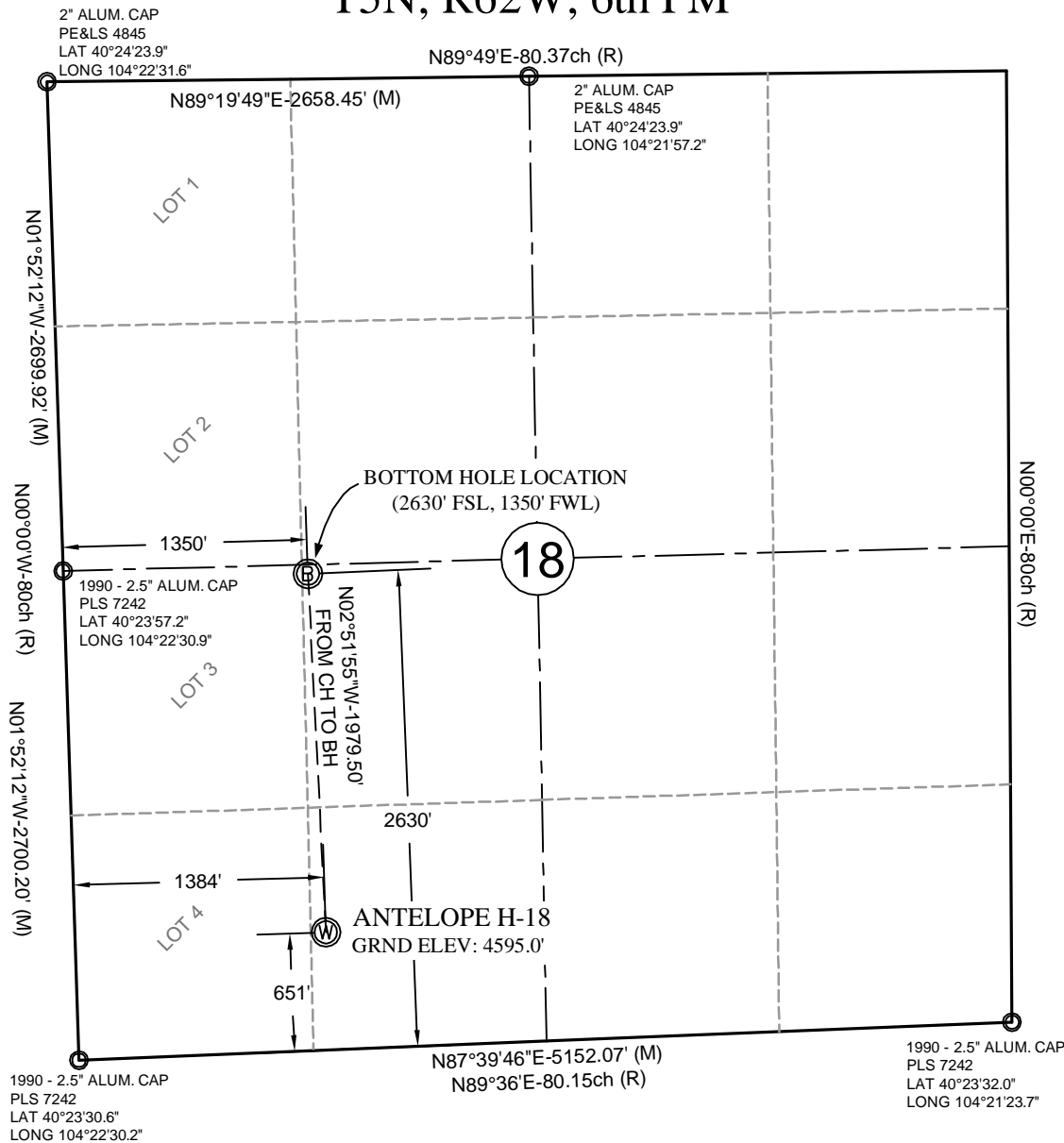


T5N, R62W, 6th PM



**NAD83
SURFACE LOC.**
LAT 40°23'37.4"
(40.393721)
LONG 104°22'12.5"
(104.370139)

**NAD83
BOTTOM HOLE LOC.**
LAT 40°23'56.9"
(40.399150)
LONG 104°22'13.5"
(104.370403)

STATE PLANE
(COLORADO NORTH)
N=1,388,278 ft
E=3,314,699 ft

STATE PLANE
(COLORADO NORTH)
N=1,390,254 ft
E=3,314,600 ft

NOTES:

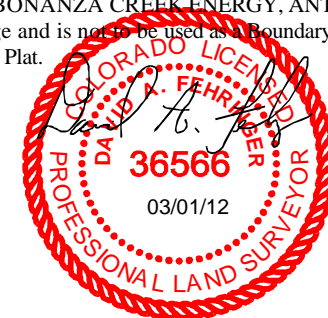
1. ○ INDICATES FOUND MONUMENT AS DESCRIBED
2. ELEVATIONS BASED ON NAVD88 DERIVED FROM STATIC REDUCTION CALCULATED FROM GEOID 03.
3. THE BASIS OF BEARING IS NAD83 GRID DERIVED FROM STATIC REDUCTION
4. (M) = MEASURED DATA; (R) GLO PLAT DATA OF RECORD
5. GPS OPERATOR: DAVE FEHRINGER
6. PDOP VALUE = 2.1
7. BEARING FROM SURFACE LOCATION TO SW CORNER SECTION 18:
S62°34'22"W - 1534.5'

REFERENCE STAKES:

175' NORTH - 4597.7'
200' NORTH - 4597.7'
215' WEST - 4595.9'
240' WEST - 4599.3'

CERTIFICATE OF SURVEYOR

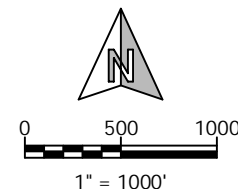
I, David A. Fehringer, of Fremont Engineering & Surveying, from Lander, Wyoming hereby certify that this map was made from notes taken during an actual survey by myself on FEBRUARY 23, 2012, for and on behalf of LowhamWalsh and Bonanza Creek Energy. That this plat correctly shows the drilling location of BONANZA CREEK ENERGY, ANTELOPE H-18 to the best of my knowledge and is not to be used as a Boundary Survey or Improvement Survey Plat.



**LOWHAM
WALSH LLC**
Engineering & Environmental Services

205 S. THIRD ST.
LANDER, WY 82520
(307) 335-8466 (O)
(307) 335-7343 (F)

Drawn By: DAF
Checked By: DAF
Date: 3/1/2012
Revision: 1 - change BH location
Date: 3/13/12
Sheet: 1 of 1



**BONANZA CREEK ENERGY
ANTELOPE H-18
WELL LOCATION CERTIFICATE
651' FSL, 1384' FWL,
ANTELOPE D-18 PAD
SE¼SW¼, SECTION 18, T5N, R62W, 6th PM
WELD COUNTY, COLORADO**