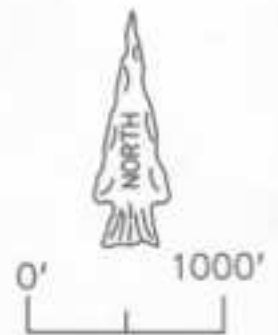
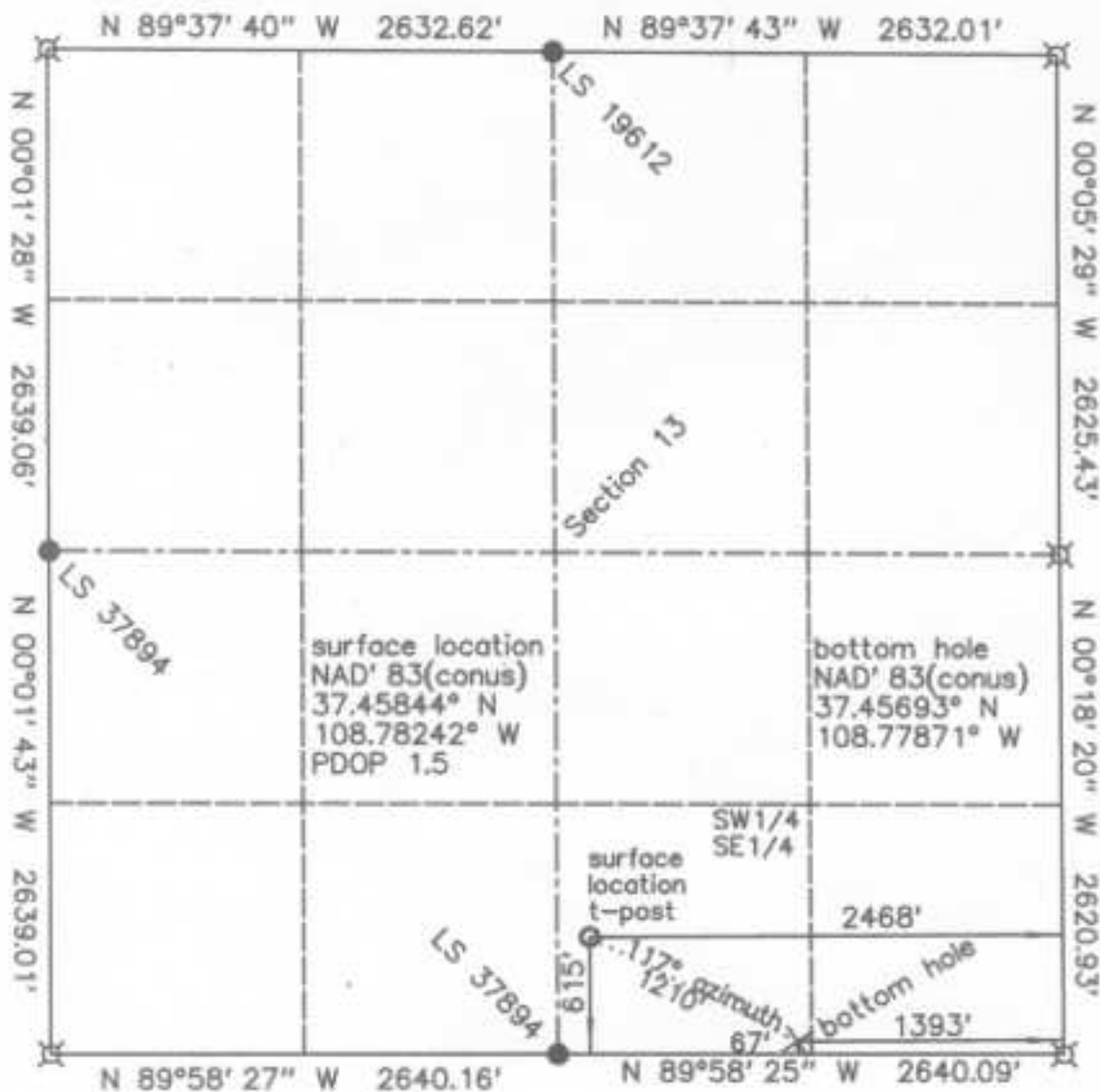


# WELL LOCATION PLAT



Scale: 1" = 1000'  
Basis of bearing is assumed from GPS True North as shown.

- ✕ standard GLO/BLM monument
- set standard monument
- standard corner as labeled
- \* from GLO/BLM
- \*\* calculated

KINDER MORGAN CO2 COMPANY, LP  
YA - 7  
615' FSL & 2468' FEL (surface location)  
6692.3' ground elevation NAVD' 88 (from OPUS)  
67' FSL & 1393' FEL (bottom hole)  
Section 13, T.37 N., R.18 W., NMPM  
Montezuma County, CO

- Notes:
- 1) Distances/dimensions are perpendicular to section/aliquot lines.
  - 2) Surface use is Fee dryland agriculture.
  - 3) GPS was corrected with OPUS, operator was R.J. Caffey, CO LS 36562
  - 4) There are no improvements except fences.

date of survey : 11/01/2011 & 03/15/2012  
date of plat : revised 03/19/2012

KNOW ALL MEN BY THESE PRESENTS that I, GERALD G. HUDDLESTON, do hereby certify that this plat was prepared from field notes of an actual survey made by me or under my supervision and that the same is true and accurate to the best of my knowledge and belief.

