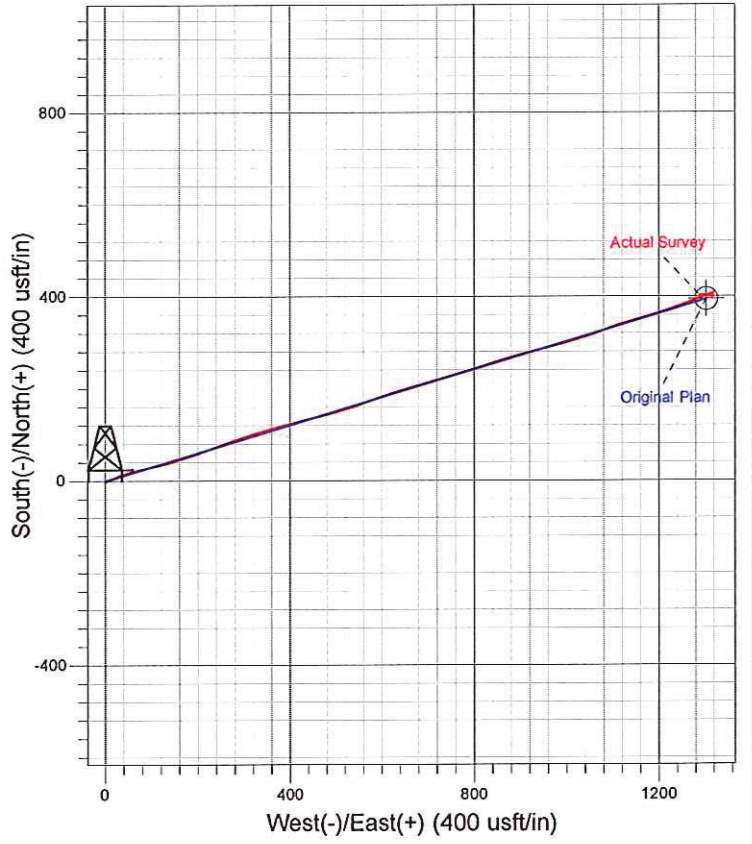
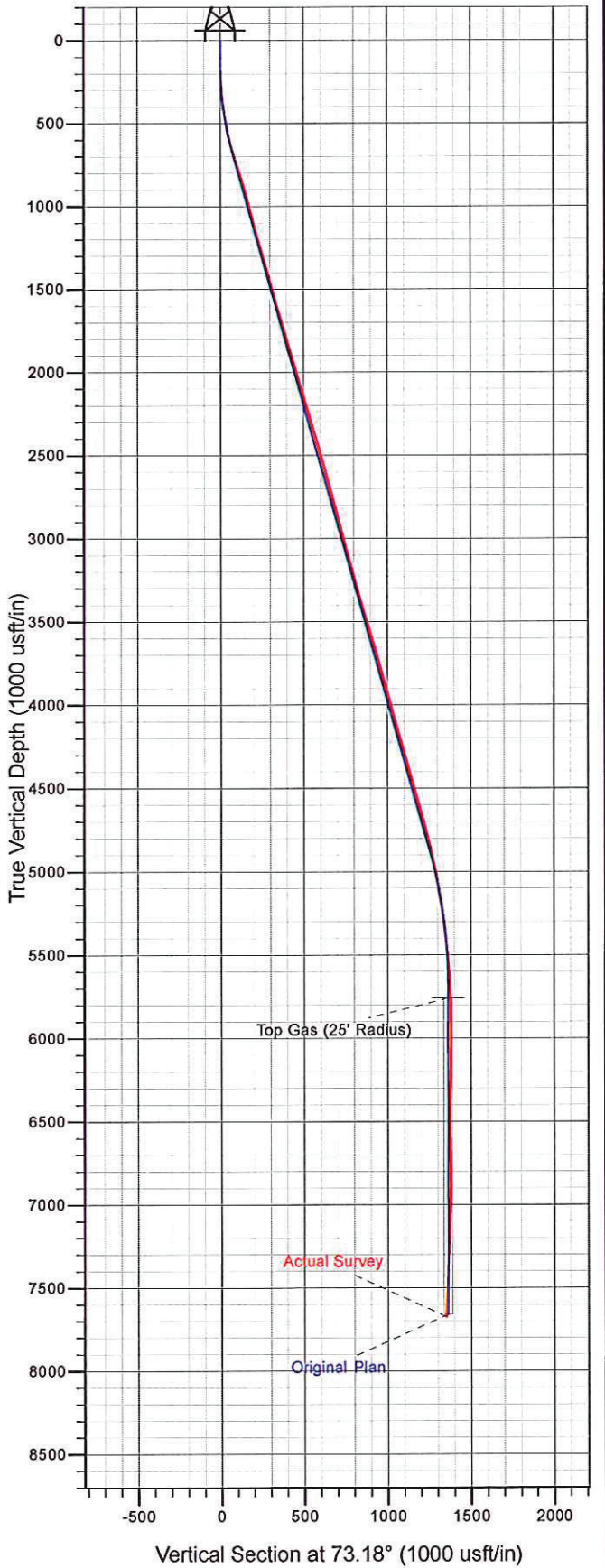




Well Name: GM 323-23
 Surface Location: MV 10-23 Pad
 North American Datum 1983 , US State Plane 1983 . Colorado Central Zone
 Ground Elevation: 5976.00
 +N/-S +E/-W Northing Easting Latitude Longitude Slot
 0.00 0.00 1619638.43 2271248.53 39.50624 -108.08311 A8
 KELLY BUSHING @ 6002.00usft (Nabors 576 (26' RKB) kjs)



Azimuths to True North
 Magnetic North: 10.36°
 Magnetic Field
 Strength: 52216.5nT
 Dip Angle: 65.72°
 Date: 9/23/2011
 Model: IGRF2010