

**HALLIBURTON**

---

**WILLIAMS PRODUCTION RMT INC - EBUS**

---

**GM 323-23  
GRAND VALLEY  
Garfield County , Colorado**

**Cement Surface Casing**

**14-Sep-2011**

**Job Site Documents**

The Road to Excellence Starts with Safety

Sold To #: 300721	Ship To #: 300721	Quote #:	Sales Order #: 8445480
Customer: WILLIAMS PRODUCTION RMT INC - EBUS		Customer Rep: HARTL, AL	
Well Name: GM	Well #: 323-23	API/UWI #: 05-045-20475	
Field: GRAND VALLEY	City (SAP): PARACHUTE	County/Parish: Garfield	State: Colorado
Lat: N 39.506 deg. OR N 39 deg. 30 min. 22.561 secs.		Long: W 108.083 deg. OR W -109 deg. 55 min. 0.829 secs.	
Contractor: NABORS	Rig/Platform Name/Num: NABORS 576		
Job Purpose: Cement Surface Casing			
Well Type: Development Well		Job Type: Cement Surface Casing	
Sales Person: KOHL, KYLE	Srvc Supervisor: KUKUS, CRAIG	MBU ID Emp #: 369124	

### Job Personnel

HES Emp Name	Exp Hrs	Emp #	HES Emp Name	Exp Hrs	Emp #	HES Emp Name	Exp Hrs	Emp #
BURKE, BRENDAN Patrick	5	487782	KUKUS, CRAIG A	5	369124	SMITH, DUSTIN Michael	5	418015
WYCKOFF, RYAN Scott	5	476117						

### Equipment

HES Unit #	Distance-1 way	HES Unit #	Distance-1 way	HES Unit #	Distance-1 way	HES Unit #	Distance-1 way
10744648C	60 mile	10829469	60 mile	10867423	60 mile	10998508	60 mile
10998512	60 mile						

### Job Hours

Date	On Location Hours	Operating Hours	Date	On Location Hours	Operating Hours	Date	On Location Hours	Operating Hours
9/14/11	5	2.5						

TOTAL Total is the sum of each column separately

### Job

### Job Times

Formation Name	Top	Bottom	Called Out	Date	Time	Time Zone
Formation Depth (MD)			On Location	14 - Sep - 2011	10:00	MST
Form Type		BHST	Job Started	14 - Sep - 2011	13:30	MST
Job depth MD	780. ft	Job Depth TVD	Job Completed	14 - Sep - 2011	16:49	MST
Water Depth		Wk Ht Above Floor	Departed Loc	14 - Sep - 2011	17:32	MST
Perforation Depth (MD)	From	To		14 - Sep - 2011	18:30	MST

### Well Data

Description	New / Used	Max pressure psig	Size in	ID in	Weight lbm/ft	Thread	Grade	Top MD ft	Bottom MD ft	Top TVD ft	Bottom TVD ft
<b>Sales/Rental/3<sup>rd</sup> Party (HES)</b>											

### Sales/Rental/3<sup>rd</sup> Party (HES)

Description	Qty	Qty uom	Depth	Supplier
PLUG,CMTG, TOP, 9 5/8, HWE, 8.16 MIN/9.06 MA	1	EA		
R/A DENSOMETER W/CHART RECORDER, /JOB, ZI	1	JOB		
PORT. DAS W/CEMWIN; ACQUIRE W/HES, ZI	1	JOB		
ADC (AUTO DENSITY CTRL) SYS, /JOB, ZI	1	JOB		

### Tools and Accessories

Type	Size	Qty	Make	Depth	Type	Size	Qty	Make	Depth	Type	Size	Qty	Make
Guide Shoe					Packer					Top Plug	9 5/8	1	HES
Float Shoe					Bridge Plug					Bottom Plug			
Float Collar					Retainer					SSR plug set			
Insert Float										Plug Container	9 5/8	1	HES
Stage Tool										Centralizers			

### Miscellaneous Materials

Gelling Agt	Conc	Surfactant	Conc	Acid Type	Qty	Conc %
Treatment Fld	Conc	Inhibitor	Conc	Sand Type	Size	Qty

### Fluid Data

Stage/Plug #: 1

# HALLIBURTON

## Cementing Job Summary

Fluid #	Stage Type	Fluid Name	Qty	Qty uom	Mixing Density lbm/gal	Yield ft <sup>3</sup> /sk	Mix Fluid Gal/sk	Rate bbl/min	Total Mix Fluid Gal/sk
1	Water Spacer		20.00	bbl	8.34	.0	.0	4	
2	Tail Cement	VERSACEM (TM) SYSTEM (452010)	<del>215.0</del>	sacks	12.8	2.11	11.75	6	11.75
	11.75 Gal	FRESH WATER	280						
3	Displacement Fluid		52.00	bbl	8.34	.0	.0	10	
Calculated Values		Pressures		Volumes					
Displacement	52	Shut In: Instant		Lost Returns	0	Cement Slurry	80.8	Pad	
Top Of Cement	SURFACE	5 Min		Cement Returns	15	Actual Displacement	52	Treatment	
Frac Gradient		15 Min		Spacers	20	Load and Breakdown		Total Job	152
Rates									
Circulating	RIG	Mixing	6	Displacement	10	Avg. Job	8		
Cement Left In Pipe	Amount	43.82 ft	Reason	Shoe Joint					
Frac Ring # 1 @	ID	Frac ring # 2 @	ID	Frac Ring # 3 @	ID	Frac Ring # 4 @	ID		
The Information Stated Herein Is Correct				Customer Representative Signature					

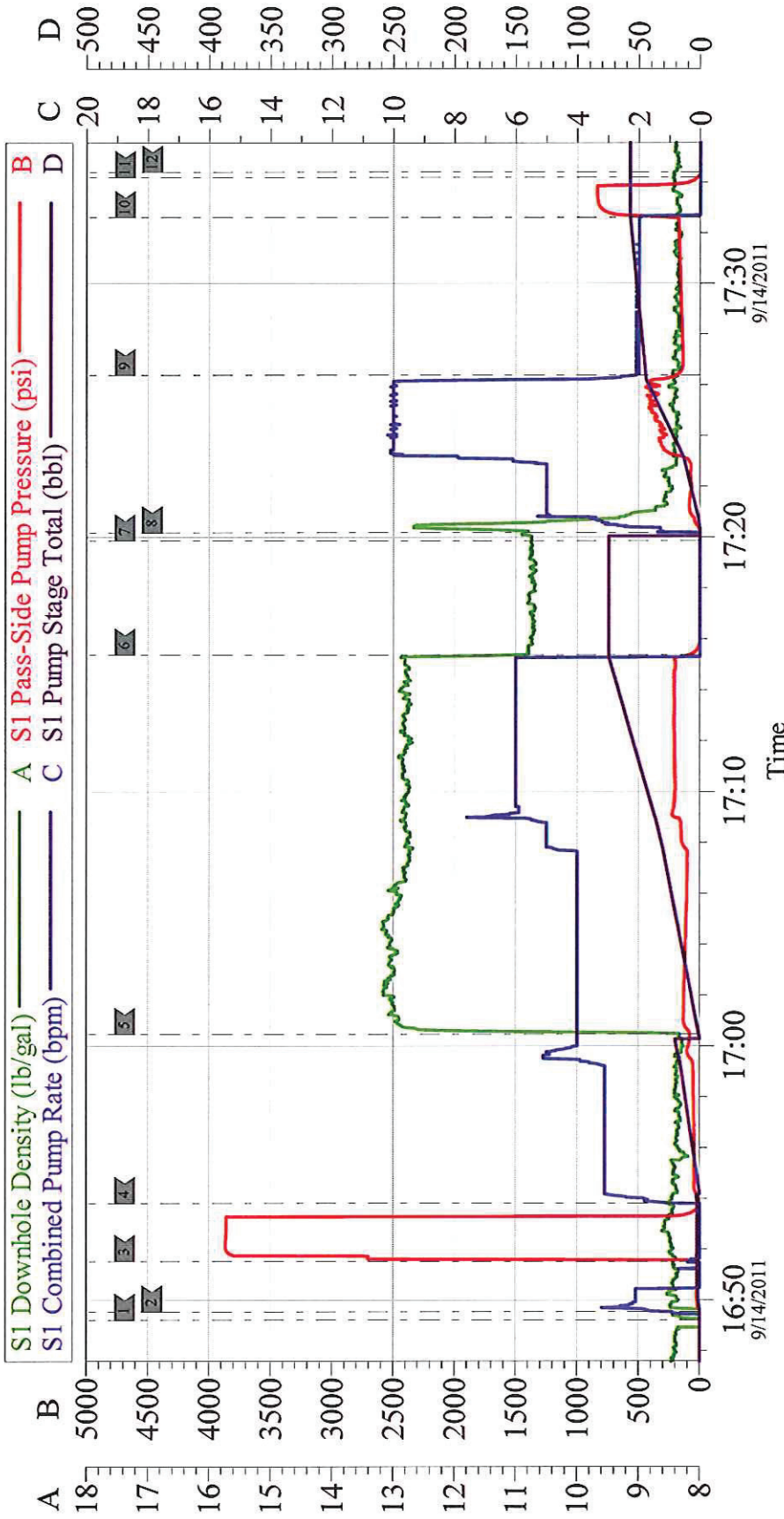
*The Road to Excellence Starts with Safety*

Sold To #: 300721	Ship To #: 300721	Quote #:	Sales Order #: 8445480
Customer: WILLIAMS PRODUCTION RMT INC - EBUS		Customer Rep: HARTL, AL	
Well Name: GM	Well #: 323-23	API/UWI #: 05-045-20475	
Field: GRAND VALLEY	City (SAP): PARACHUTE	County/Parish: Garfield	State: Colorado
<b>Legal Description:</b>			
Lat: N 39.506 deg. OR N 39 deg. 30 min. 22.561 secs.		Long: W 108.083 deg. OR W -109 deg. 55 min. 0.829 secs.	
Contractor: NABORS		Rig/Platform Name/Num: NABORS 576	
Job Purpose: Cement Surface Casing			Ticket Amount:
Well Type: Development Well		Job Type: Cement Surface Casing	
Sales Person: KOHL, KYLE		Srvc Supervisor: KUKUS, CRAIG	MBU ID Emp #: 369124

Activity Description	Date/Time	Cht #	Rate bbl/min	Volume bbl		Pressure psig		Comments
				Stage	Total	Tubing	Casing	
Call Out	09/14/2011 10:00							
Depart Yard Safety Meeting	09/14/2011 12:00							SAFETY MEETING INVOLVING THE ENTIRE CMT CREW
Arrive At Loc	09/14/2011 13:30							RIG JUST STARTED RUNNING CSG
Assessment Of Location Safety Meeting	09/14/2011 13:40							ASSESSMENT OF LOCATION INVOLVING THE ENTIRE CMT CREW
Pre-Rig Up Safety Meeting	09/14/2011 14:00							SAFETY MEETING INVOLVING THE ENTIRE CMT CREW
Rig-Up Equipment	09/14/2011 14:10							RIG IRON TO STAND PIPE AND LINE TO CELLAR FOR CLEAN UP/ WATER TO UP RIGHT AND DAY TANK
Circulate Well	09/14/2011 15:40							RIG CIRCULATE WELL THRU HES CMT HEAD
Pre-Job Safety Meeting	09/14/2011 16:30							SAFETY MEETING INVOLVING EVERYONE ON LOCATION
Start Job	09/14/2011 16:49							TD 780 FT TP 696.60 FT SJ 43.82 FT OH 13.5 IN PIPE 9 5/8 IN 32.3# MUD WT 10.2#
Other	09/14/2011 16:49		2	2			35.0	FILL LINES WITH FRESH WATER
Pressure Test	09/14/2011 16:51		0.5			3500.0		PRESSURE TEST GOOD
Pump Spacer 1	09/14/2011 16:53		4	20			103.0	FRESH WATER SPACER

Activity Description	Date/Time	Cht #	Rate bbl/min	Volume bbl		Pressure psig		Comments
				Stage	Total	Tubing	Casing	
Pump Tail Cement	09/14/2011 17:00		6	80.8			230.0	PUMP 215 SKS TAIL CEMENT AT 12.8 PPG 2.11 Y 11.75 GAL/SK
Shutdown	09/14/2011 17:15							READY TUB TO WASH UP ON TOP OF PLUG
Drop Top Plug	09/14/2011 17:19							PLUG LEFT THE PLUG CONTAINER
Pump Displacement	09/14/2011 17:20		10	51.3			432.0	PUMP H2O DISPLACEMENT
Slow Rate	09/14/2011 17:26		2	41			158.0	SLOW RATE 2 BBL MIN
Bump Plug	09/14/2011 17:32		2	51.3			845.0	PLUG LANDED AT 195 PSI
Check Floats	09/14/2011 17:34							FLOATS HELD / GOT 1/2 BBL BACK TO TANKS
End Job	09/14/2011 17:34							HAD GOOD CIRCULATION THRU OUT THE JOB / GOT CEMENT BACK TO SURFACE 15 BBLs TOTAL
Pre-Rig Down Safety Meeting	09/14/2011 17:40							SAFETY MEETING INVOLVING THE ENTIRE CMT CREW
Rig-Down Equipment	09/14/2011 17:45							
Safety Meeting - Departing Location	09/14/2011 18:15							SAFETY MEETING INVOLVING THE ENTIRE CMT CREW
Comment	09/14/2011 18:30							THANK YOU FOR USING HALLIBURTON, CRAIG KUKUS AND CREW

# WILLIAMS SURFACE



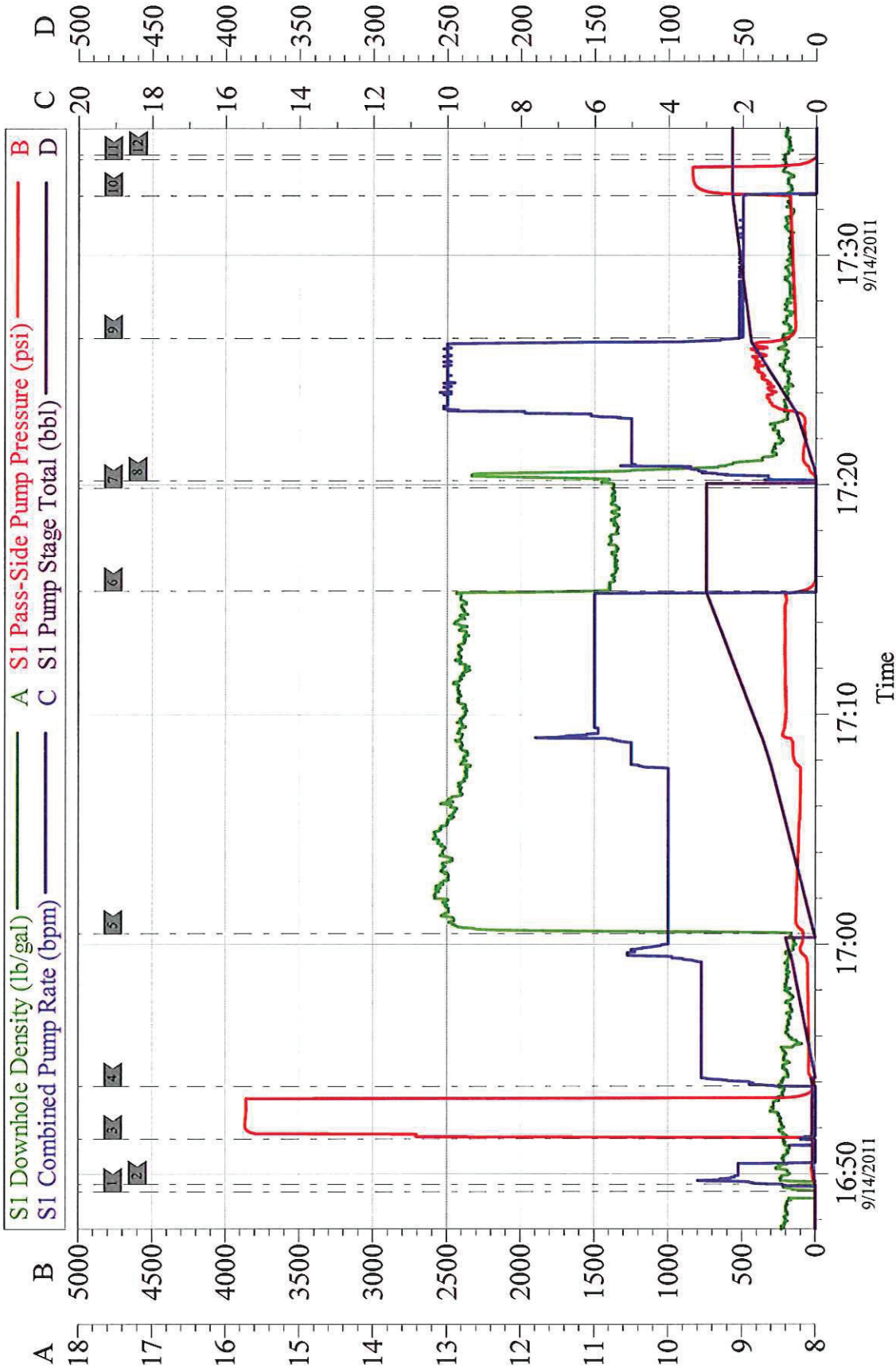
### Local Event Log

1	START JOB	16:49:13	2	PRIME LINES	16:49:32	3	PRESSURE TEST	16:51:32
4	PUMP H2O SPACER	16:53:49	5	PUMP TAIL CEMENT	17:00:28	6	SHUT DOWN	17:15:22
7	DROP PLUG	17:19:52	8	PUMP H2O DISPLACEMENT	17:20:11	9	SLOW RATE	17:26:23
10	BUMP PLUG	17:32:36	11	CHECK FLOATS	17:34:11	12	END JOB	17:34:24

Customer:	WILLIAMS PRODUCTION	Job Date:	14-Sep-2011	Sales Order #:	8445480
Well Description:	GM 323-23	Job Type:	SURFACE	ADC Used:	YES
Company Rep:	AL HARTL	Cement Supervisor:	CRAIG KUKUS	Elite #/Operator:	E 6 BRENNANDAN BURKE

OptiCem v6.4.8  
14-Sep-11 17:43

# WILLIAMS SURFACE



Customer: <b>WILLIAMS PRODUCTION</b>	Job Date: <b>14-Sep-2011</b>	Sales Order #: <b>8445480</b>
Well Description: <b>GM 323-23</b>	Job Type: <b>SURFACE</b>	ADC Used: <b>YES</b>
Company Rep: <b>AL HARTL</b>	Cement Supervisor: <b>CRAIG KUKUS</b>	Elite #/Operator: <b>E 6 BRENNNDAN BURKE</b>