

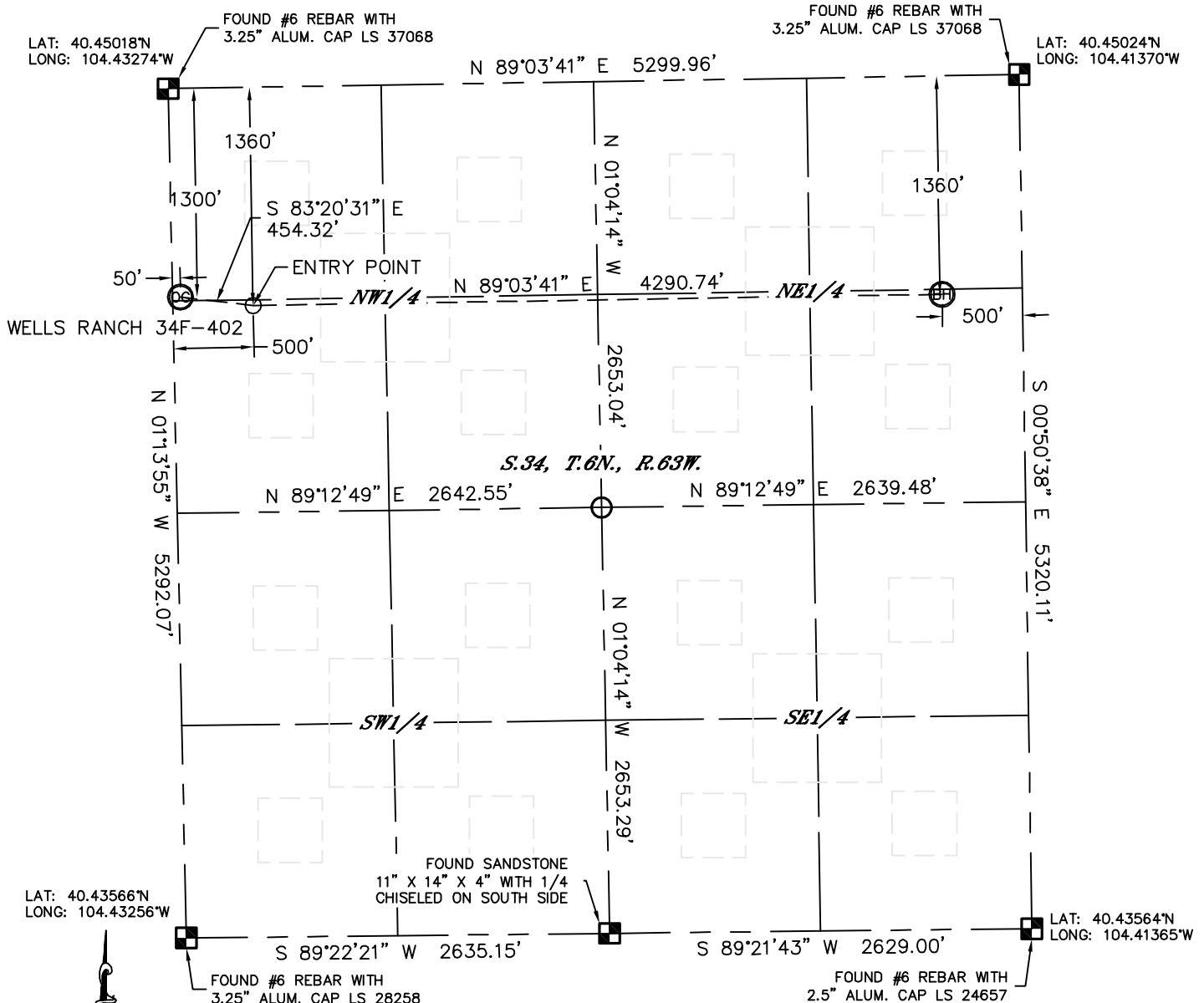


Lat40°, Inc. 1635 Foxtrail Drive, Suite 325 Loveland, CO 970-776-3321

# WELL LOCATION CERTIFICATE

THIS MAP DOES NOT REPRESENT A BOUNDARY SURVEY

SECTION: 34  
TOWNSHIP: 6N  
RANGE: 63W



In accordance with a request from Al Bragg with PDC ENERGY Lat40°, Inc. has determined the surface location of the WELLS RANCH 34F-402 to be 1300' from the NORTH line and 50' from the WEST line and the bottom hole to be 1360' from the NORTH line and 500' from the EAST line as measured at right angles from the section lines of Section 34, Township 6 North, Range 63 West of the Sixth Principal Meridian, County of Weld, State of Colorado.

I hereby state that this Well Location Certificate was prepared by me, or under my direct supervision, that the fieldwork was completed on 2/16/2012, for and on behalf of PDC ENERGY. That this is not a Land Survey Plat or an Improvement Survey Plat, and that it is not to be relied upon for establishment of fence, building, or other future improvement lines.

#### SURFACE LOCATION

LAT: 40.44662°N  
LONG: 104.43252°W  
PDOP: 1.1  
ELEV: 4804'  
1/4, 1/4: NW1/4NW1/4  
NEAREST PROPERTY LINE: 50' W

#### BOTTOM HOLE

LAT: 40.44651°N  
LONG: 104.41549°W

#### ENTRY POINT

LAT: 40.44646°N  
LONG: 104.43090°W

#### NOTE:

- 1) Bearings shown are Grid Bearings of the Colorado State Plane Coordinate System, North Zone, North American Datum 1983/2007. The lineal dimensions as contained herein are based upon the "U.S. Survey Foot."
- 2) Ground elevations are based on an observed GPS elevation (NAVD 1988 DATUM).
- 3) IMPROVEMENTS: See LOCATION DRAWING for all visible improvements within 400' of disturbed area.
- 4) SURFACE USE: RANGELAND
- 5) INSTRUMENT OPERATOR: ADAM KELLY

#### NOTE

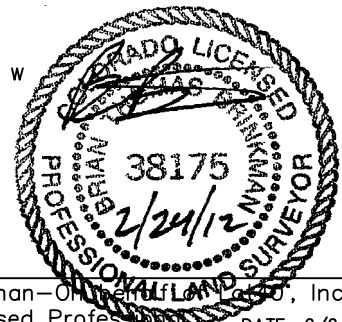
According to Colorado law, you must commence any legal action based upon any defect in this W.L.C. within three years after you discover such defect. In no event, may any action based upon any defect in this survey be commenced more than ten years after the date of the certificate shown hereon. (13-80-105 C.R.S.)

#### LEGEND

- = ALIQUOT MONUMENT AS DESCRIBED  
○ = CALCULATED POSITION

Brian T. Brinkman—On Behalf of Lat40°, Inc.  
Colorado Licensed Professional  
Land Surveyor No. 38175

DATE: 2/24/2012  
PROJECT#: 2011018



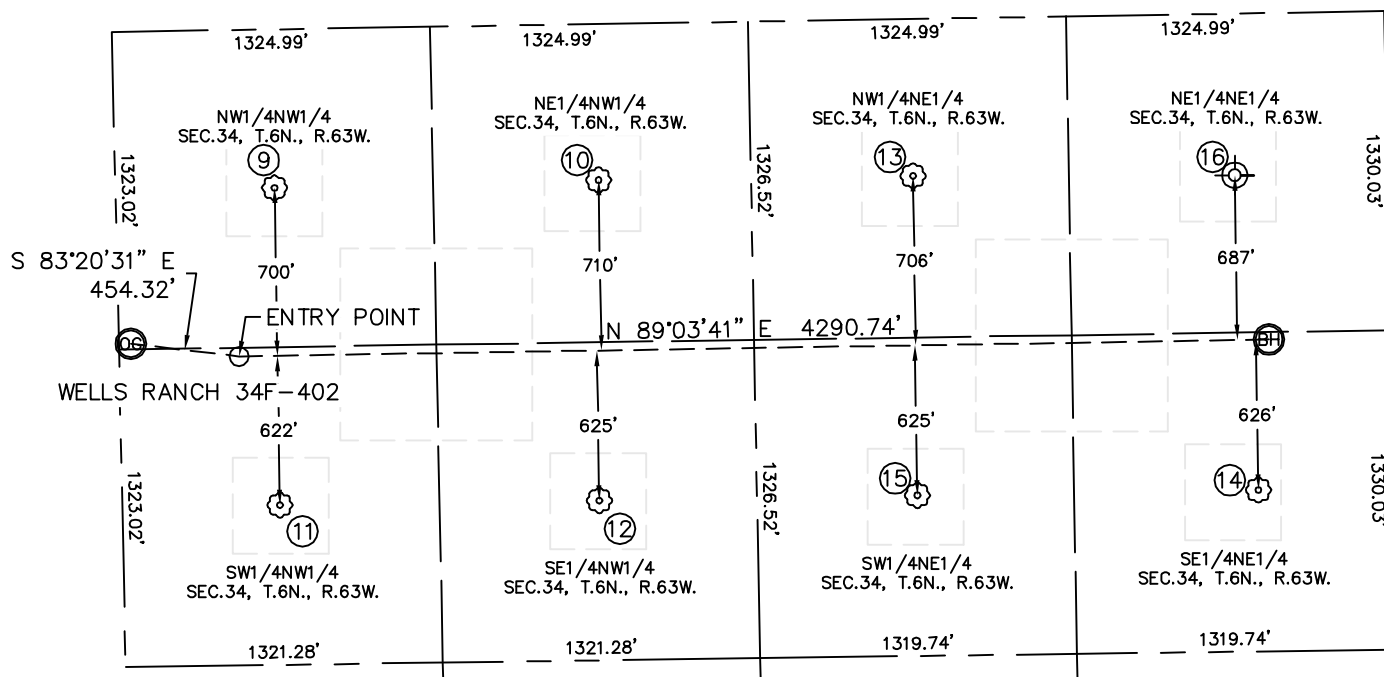


Lat40°, Inc. 1635 Foxtrail Drive, Suite 325 Loveland, CO 970-776-3321

# SITE SKETCH

## WELLS RANCH 34F-402

SECTION: 34  
TOWNSHIP: 6N  
RANGE: 63W



⑨

WELLS RANCH 11-34  
NW1/4NW1/4  
660' FNL  
663' FWL  
LAT-40.44838°N  
LONG-104.43034°W  
PDOP: 1.8  
ELEV: 4812'

⑩

WELLS RANCH 21-34  
NE1/4NW1/4  
650' FNL  
2013' FWL  
LAT-40.44842°N  
LONG-104.42549°W  
PDOP: 1.8  
ELEV: 4823'

⑪

WELLS RANCH 12-34  
SW1/4NW1/4  
1982' FNL  
657' FWL  
LAT-40.44475°N  
LONG-104.43031°W  
PDOP: 1.8  
ELEV: 4794'

⑫

WELLS RANCH 22-34  
SE1/4NW1/4  
1985' FNL  
1988' FWL  
LAT-40.44476°N  
LONG-104.42553°W  
PDOP: 1.3  
ELEV: 4791'

⑬

WELLS RANCH 31-34  
NW1/4NE1/4  
654' FNL  
1973' FEL  
LAT-40.44843°N  
LONG-104.42078°W  
PDOP: 1.3  
ELEV: 4831'

⑭

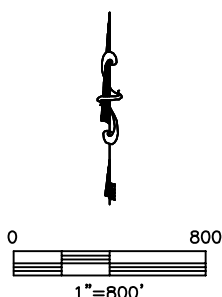
WELLS RANCH 42-34  
SE1/4NE1/4  
1986' FNL  
554' FEL  
LAT-40.44479°N  
LONG-104.41567°W  
PDOP: 1.4  
ELEV: 4819'

⑮

WELLS RANCH 32-34  
SW1/4NE1/4  
1985' FNL  
1974' FEL  
LAT-40.44477°N  
LONG-104.42077°W  
PDOP: 1.9  
ELEV: 4811'

⑯

WELLS RANCH 41-34  
(Drilled & Abandoned)  
NE1/4NE1/4  
668' FNL (COGCC)  
666' FEL (COGCC)  
LAT-40.44839°N (COGCC)  
LONG-104.41597°W (COGCC)  
PDOP: N/A  
ELEV: 4830' (COGCC)



DATE: 2/24/2012  
PROJECT#: 2011018