

### Well Name: SRC Coyle 32-34D

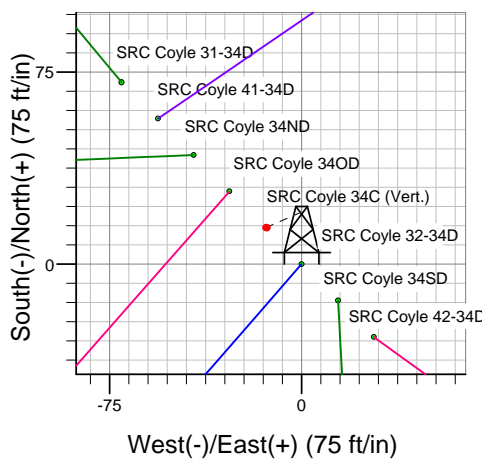
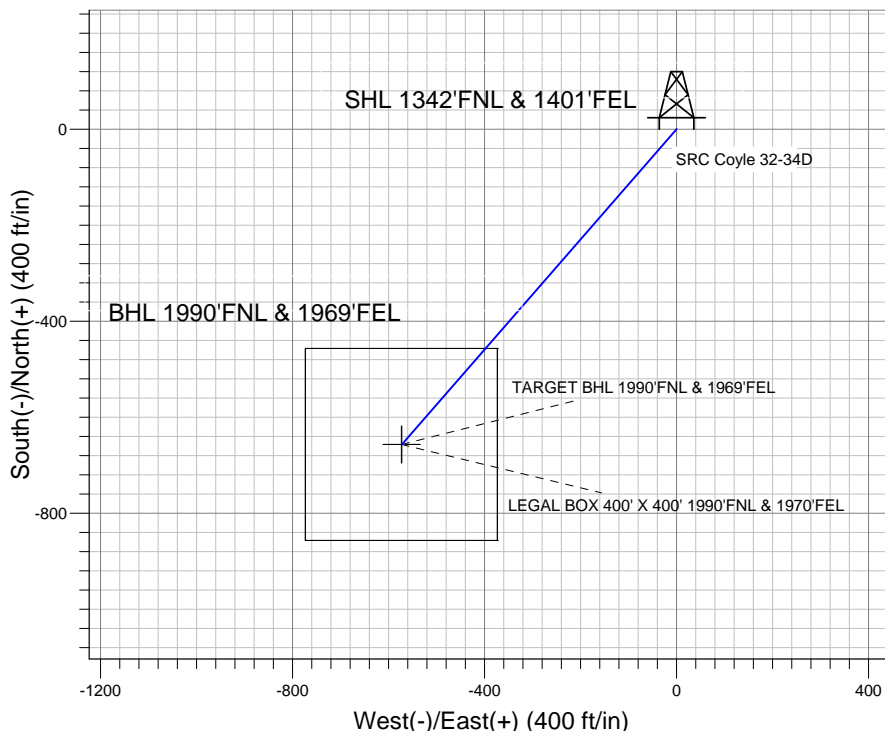
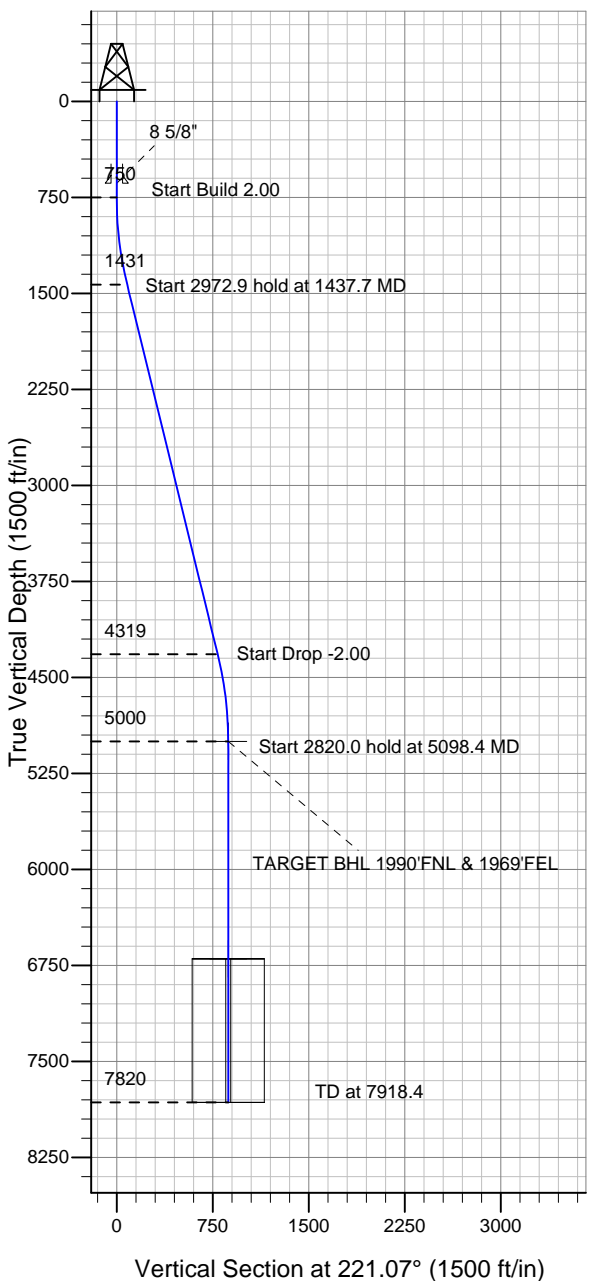
Surface Location: SRC Coyle 31-34D Pad Sec.34-T4N-R68W  
 North American Datum 1983 US State Plane 1983 Colorado Northern Zone

Ground Elevation: 5111.0

+N/-S	+E/-W	Northing	Easting	Latitude	Longitude	Slot
0.0	0.0	1342900.49	3143754.88	40.273515	-104.984802	

Original Well Elev WELL @ 5124.0ft (Original Well Elev)

### Synergy Resources



SRC Coyle 31-34D Pad Sec.34-T4N-R68W  
 SRC Coyle 32-34D  
 Plan #1 (8-23-11)  
 8:28, August 25 2011



Azimuths to True North  
 Magnetic North: 8.94°

Magnetic Field  
 Strength: 53018.7snT  
 Dip Angle: 66.91°  
 Date: 8/23/2011  
 Model: IGRF2010

### WELLBORE TARGET DETAILS (LAT/LONG)

Name	TVD	+N/-S	+E/-W	Latitude	Longitude	Shape
TARGET BHL 1990'FNL & 1969'FEL	5000.0	-656.8	-572.3	40.271712	-104.986853	Point
LEGAL BOX 400' X 400' 1990'FNL & 1970'FEL	6700.0	-656.8	-573.3	40.271712	-104.986856	Rectangle (Sides: L400.0 W400.0)

### SECTION DETAILS

Sec	MD	Inc	Azi	TVD	+N/-S	+E/-W	DLeg	TFace	VSec	Target
1	0.0	0.00	0.00	0.0	0.0	0.0	0.00	0.00	0.0	
2	750.0	0.00	0.00	750.0	0.0	0.0	0.00	0.00	0.0	
3	1437.7	13.75	221.07	1431.2	-61.9	-54.0	2.00	221.07	82.2	
4	4410.7	13.75	221.07	4318.8	-594.9	-518.4	0.00	0.00	789.0	
5	5098.4	0.00	0.00	5000.0	-656.8	-572.3	2.00	180.00	871.2	TARGET BHL 1990'FNL & 1969'FEL
6	7918.4	0.00	0.00	7820.0	-656.8	-572.3	0.00	0.00	871.2	



## **Directional**

### **Synergy Resources**

**SEC.34-T4N-R68W**

**SRC Coyle 31-34D Pad Sec.34-T4N-R68W**

**SRC Coyle 32-34D**

**Wellbore #1**

**Plan: Plan #1 (8-23-11)**

### **Standard Planning Report**

**25 August, 2011**

Plan Sections										
Measured Depth (ft)	Inclination (°)	Azimuth (°)	Vertical Depth (ft)	+N/-S (ft)	+E/-W (ft)	Dogleg Rate (°/100ft)	Build Rate (°/100ft)	Turn Rate (°/100ft)	TFO (°)	Target
0.0	0.00	0.00	0.0	0.0	0.0	0.00	0.00	0.00	0.00	
750.0	0.00	0.00	750.0	0.0	0.0	0.00	0.00	0.00	0.00	
1,437.7	13.75	221.07	1,431.2	-61.9	-54.0	2.00	2.00	0.00	221.07	
4,410.7	13.75	221.07	4,318.8	-594.9	-518.4	0.00	0.00	0.00	0.00	
5,098.4	0.00	0.00	5,000.0	-656.8	-572.3	2.00	-2.00	0.00	180.00	TARGET BHL 1990
7,918.4	0.00	0.00	7,820.0	-656.8	-572.3	0.00	0.00	0.00	0.00	

<b>Database:</b>	Landmark	<b>Local Co-ordinate Reference:</b>	Well SRC Coyle 32-34D
<b>Company:</b>	Synergy Resources	<b>TVD Reference:</b>	WELL @ 5124.0ft (Original Well Elev)
<b>Project:</b>	SEC.34-T4N-R68W	<b>MD Reference:</b>	WELL @ 5124.0ft (Original Well Elev)
<b>Site:</b>	SRC Coyle 31-34D Pad Sec.34-T4N-R68W	<b>North Reference:</b>	True
<b>Well:</b>	SRC Coyle 32-34D	<b>Survey Calculation Method:</b>	Minimum Curvature
<b>Wellbore:</b>	Wellbore #1		
<b>Design:</b>	Plan #1 (8-23-11)		

Planned Survey									
Measured Depth (ft)	Inclination (°)	Azimuth (°)	Vertical Depth (ft)	+N/-S (ft)	+E/-W (ft)	Vertical Section (ft)	Dogleg Rate (°/100ft)	Build Rate (°/100ft)	Turn Rate (°/100ft)
0.0	0.00	0.00	0.0	0.0	0.0	0.0	0.00	0.00	0.00
40.0	0.00	0.00	40.0	0.0	0.0	0.0	0.00	0.00	0.00
80.0	0.00	0.00	80.0	0.0	0.0	0.0	0.00	0.00	0.00
120.0	0.00	0.00	120.0	0.0	0.0	0.0	0.00	0.00	0.00
160.0	0.00	0.00	160.0	0.0	0.0	0.0	0.00	0.00	0.00
200.0	0.00	0.00	200.0	0.0	0.0	0.0	0.00	0.00	0.00
240.0	0.00	0.00	240.0	0.0	0.0	0.0	0.00	0.00	0.00
280.0	0.00	0.00	280.0	0.0	0.0	0.0	0.00	0.00	0.00
320.0	0.00	0.00	320.0	0.0	0.0	0.0	0.00	0.00	0.00
360.0	0.00	0.00	360.0	0.0	0.0	0.0	0.00	0.00	0.00
400.0	0.00	0.00	400.0	0.0	0.0	0.0	0.00	0.00	0.00
440.0	0.00	0.00	440.0	0.0	0.0	0.0	0.00	0.00	0.00
480.0	0.00	0.00	480.0	0.0	0.0	0.0	0.00	0.00	0.00
520.0	0.00	0.00	520.0	0.0	0.0	0.0	0.00	0.00	0.00
560.0	0.00	0.00	560.0	0.0	0.0	0.0	0.00	0.00	0.00
600.0	0.00	0.00	600.0	0.0	0.0	0.0	0.00	0.00	0.00
640.0	0.00	0.00	640.0	0.0	0.0	0.0	0.00	0.00	0.00
8 5/8"									
680.0	0.00	0.00	680.0	0.0	0.0	0.0	0.00	0.00	0.00
720.0	0.00	0.00	720.0	0.0	0.0	0.0	0.00	0.00	0.00
750.0	0.00	0.00	750.0	0.0	0.0	0.0	0.00	0.00	0.00
760.0	0.20	221.07	760.0	0.0	0.0	0.0	2.00	2.00	0.00
800.0	1.00	221.07	800.0	-0.3	-0.3	0.4	2.00	2.00	0.00
840.0	1.80	221.07	840.0	-1.1	-0.9	1.4	2.00	2.00	0.00
880.0	2.60	221.07	880.0	-2.2	-1.9	2.9	2.00	2.00	0.00
920.0	3.40	221.07	919.9	-3.8	-3.3	5.0	2.00	2.00	0.00
960.0	4.20	221.07	959.8	-5.8	-5.1	7.7	2.00	2.00	0.00
1,000.0	5.00	221.07	999.7	-8.2	-7.2	10.9	2.00	2.00	0.00
1,040.0	5.80	221.07	1,039.5	-11.1	-9.6	14.7	2.00	2.00	0.00
1,080.0	6.60	221.07	1,079.3	-14.3	-12.5	19.0	2.00	2.00	0.00
1,120.0	7.40	221.07	1,119.0	-18.0	-15.7	23.9	2.00	2.00	0.00
1,160.0	8.20	221.07	1,158.6	-22.1	-19.2	29.3	2.00	2.00	0.00
1,200.0	9.00	221.07	1,198.2	-26.6	-23.2	35.3	2.00	2.00	0.00
1,240.0	9.80	221.07	1,237.6	-31.5	-27.5	41.8	2.00	2.00	0.00
1,280.0	10.60	221.07	1,277.0	-36.9	-32.1	48.9	2.00	2.00	0.00
1,320.0	11.40	221.07	1,316.2	-42.6	-37.1	56.5	2.00	2.00	0.00
1,360.0	12.20	221.07	1,355.4	-48.8	-42.5	64.7	2.00	2.00	0.00
1,400.0	13.00	221.07	1,394.4	-55.4	-48.2	73.4	2.00	2.00	0.00
1,437.7	13.75	221.07	1,431.2	-61.9	-54.0	82.2	2.00	2.00	0.00
1,440.0	13.75	221.07	1,433.3	-62.3	-54.3	82.7	0.00	0.00	0.00
1,480.0	13.75	221.07	1,472.2	-69.5	-60.6	92.2	0.00	0.00	0.00
1,520.0	13.75	221.07	1,511.1	-76.7	-66.8	101.7	0.00	0.00	0.00
1,560.0	13.75	221.07	1,549.9	-83.9	-73.1	111.2	0.00	0.00	0.00
1,600.0	13.75	221.07	1,588.8	-91.0	-79.3	120.7	0.00	0.00	0.00
1,640.0	13.75	221.07	1,627.6	-98.2	-85.6	130.2	0.00	0.00	0.00
1,680.0	13.75	221.07	1,666.5	-105.4	-91.8	139.8	0.00	0.00	0.00
1,720.0	13.75	221.07	1,705.3	-112.5	-98.1	149.3	0.00	0.00	0.00
1,760.0	13.75	221.07	1,744.2	-119.7	-104.3	158.8	0.00	0.00	0.00
1,800.0	13.75	221.07	1,783.0	-126.9	-110.6	168.3	0.00	0.00	0.00
1,840.0	13.75	221.07	1,821.9	-134.0	-116.8	177.8	0.00	0.00	0.00
1,880.0	13.75	221.07	1,860.7	-141.2	-123.1	187.3	0.00	0.00	0.00
1,920.0	13.75	221.07	1,899.6	-148.4	-129.3	196.8	0.00	0.00	0.00
1,960.0	13.75	221.07	1,938.4	-155.6	-135.6	206.3	0.00	0.00	0.00
2,000.0	13.75	221.07	1,977.3	-162.7	-141.8	215.8	0.00	0.00	0.00

<b>Database:</b>	Landmark	<b>Local Co-ordinate Reference:</b>	Well SRC Coyle 32-34D
<b>Company:</b>	Synergy Resources	<b>TVD Reference:</b>	WELL @ 5124.0ft (Original Well Elev)
<b>Project:</b>	SEC.34-T4N-R68W	<b>MD Reference:</b>	WELL @ 5124.0ft (Original Well Elev)
<b>Site:</b>	SRC Coyle 31-34D Pad Sec.34-T4N-R68W	<b>North Reference:</b>	True
<b>Well:</b>	SRC Coyle 32-34D	<b>Survey Calculation Method:</b>	Minimum Curvature
<b>Wellbore:</b>	Wellbore #1		
<b>Design:</b>	Plan #1 (8-23-11)		

Planned Survey									
Measured Depth (ft)	Inclination (°)	Azimuth (°)	Vertical Depth (ft)	+N/-S (ft)	+E/-W (ft)	Vertical Section (ft)	Dogleg Rate (°/100ft)	Build Rate (°/100ft)	Turn Rate (°/100ft)
2,040.0	13.75	221.07	2,016.1	-169.9	-148.0	225.4	0.00	0.00	0.00
2,080.0	13.75	221.07	2,055.0	-177.1	-154.3	234.9	0.00	0.00	0.00
2,120.0	13.75	221.07	2,093.8	-184.2	-160.5	244.4	0.00	0.00	0.00
2,160.0	13.75	221.07	2,132.7	-191.4	-166.8	253.9	0.00	0.00	0.00
2,200.0	13.75	221.07	2,171.6	-198.6	-173.0	263.4	0.00	0.00	0.00
2,240.0	13.75	221.07	2,210.4	-205.8	-179.3	272.9	0.00	0.00	0.00
2,280.0	13.75	221.07	2,249.3	-212.9	-185.5	282.4	0.00	0.00	0.00
2,320.0	13.75	221.07	2,288.1	-220.1	-191.8	291.9	0.00	0.00	0.00
2,360.0	13.75	221.07	2,327.0	-227.3	-198.0	301.4	0.00	0.00	0.00
2,400.0	13.75	221.07	2,365.8	-234.4	-204.3	311.0	0.00	0.00	0.00
2,440.0	13.75	221.07	2,404.7	-241.6	-210.5	320.5	0.00	0.00	0.00
2,480.0	13.75	221.07	2,443.5	-248.8	-216.8	330.0	0.00	0.00	0.00
2,520.0	13.75	221.07	2,482.4	-255.9	-223.0	339.5	0.00	0.00	0.00
2,560.0	13.75	221.07	2,521.2	-263.1	-229.3	349.0	0.00	0.00	0.00
2,600.0	13.75	221.07	2,560.1	-270.3	-235.5	358.5	0.00	0.00	0.00
2,640.0	13.75	221.07	2,598.9	-277.5	-241.8	368.0	0.00	0.00	0.00
2,680.0	13.75	221.07	2,637.8	-284.6	-248.0	377.5	0.00	0.00	0.00
2,720.0	13.75	221.07	2,676.6	-291.8	-254.3	387.0	0.00	0.00	0.00
2,760.0	13.75	221.07	2,715.5	-299.0	-260.5	396.5	0.00	0.00	0.00
2,800.0	13.75	221.07	2,754.3	-306.1	-266.8	406.1	0.00	0.00	0.00
2,840.0	13.75	221.07	2,793.2	-313.3	-273.0	415.6	0.00	0.00	0.00
2,880.0	13.75	221.07	2,832.1	-320.5	-279.3	425.1	0.00	0.00	0.00
2,920.0	13.75	221.07	2,870.9	-327.7	-285.5	434.6	0.00	0.00	0.00
2,960.0	13.75	221.07	2,909.8	-334.8	-291.8	444.1	0.00	0.00	0.00
3,000.0	13.75	221.07	2,948.6	-342.0	-298.0	453.6	0.00	0.00	0.00
3,040.0	13.75	221.07	2,987.5	-349.2	-304.3	463.1	0.00	0.00	0.00
3,080.0	13.75	221.07	3,026.3	-356.3	-310.5	472.6	0.00	0.00	0.00
3,120.0	13.75	221.07	3,065.2	-363.5	-316.7	482.1	0.00	0.00	0.00
3,160.0	13.75	221.07	3,104.0	-370.7	-323.0	491.7	0.00	0.00	0.00
3,200.0	13.75	221.07	3,142.9	-377.8	-329.2	501.2	0.00	0.00	0.00
3,240.0	13.75	221.07	3,181.7	-385.0	-335.5	510.7	0.00	0.00	0.00
3,280.0	13.75	221.07	3,220.6	-392.2	-341.7	520.2	0.00	0.00	0.00
3,320.0	13.75	221.07	3,259.4	-399.4	-348.0	529.7	0.00	0.00	0.00
3,360.0	13.75	221.07	3,298.3	-406.5	-354.2	539.2	0.00	0.00	0.00
3,400.0	13.75	221.07	3,337.1	-413.7	-360.5	548.7	0.00	0.00	0.00
3,440.0	13.75	221.07	3,376.0	-420.9	-366.7	558.2	0.00	0.00	0.00
3,480.0	13.75	221.07	3,414.8	-428.0	-373.0	567.7	0.00	0.00	0.00
3,520.0	13.75	221.07	3,453.7	-435.2	-379.2	577.3	0.00	0.00	0.00
3,560.0	13.75	221.07	3,492.6	-442.4	-385.5	586.8	0.00	0.00	0.00
3,600.0	13.75	221.07	3,531.4	-449.5	-391.7	596.3	0.00	0.00	0.00
3,640.0	13.75	221.07	3,570.3	-456.7	-398.0	605.8	0.00	0.00	0.00
3,680.0	13.75	221.07	3,609.1	-463.9	-404.2	615.3	0.00	0.00	0.00
3,720.0	13.75	221.07	3,648.0	-471.1	-410.5	624.8	0.00	0.00	0.00
3,760.0	13.75	221.07	3,686.8	-478.2	-416.7	634.3	0.00	0.00	0.00
3,800.0	13.75	221.07	3,725.7	-485.4	-423.0	643.8	0.00	0.00	0.00
3,840.0	13.75	221.07	3,764.5	-492.6	-429.2	653.3	0.00	0.00	0.00
3,880.0	13.75	221.07	3,803.4	-499.7	-435.5	662.8	0.00	0.00	0.00
3,920.0	13.75	221.07	3,842.2	-506.9	-441.7	672.4	0.00	0.00	0.00
3,960.0	13.75	221.07	3,881.1	-514.1	-448.0	681.9	0.00	0.00	0.00
4,000.0	13.75	221.07	3,919.9	-521.3	-454.2	691.4	0.00	0.00	0.00
4,040.0	13.75	221.07	3,958.8	-528.4	-460.5	700.9	0.00	0.00	0.00
4,080.0	13.75	221.07	3,997.6	-535.6	-466.7	710.4	0.00	0.00	0.00
4,120.0	13.75	221.07	4,036.5	-542.8	-473.0	719.9	0.00	0.00	0.00
4,160.0	13.75	221.07	4,075.3	-549.9	-479.2	729.4	0.00	0.00	0.00

<b>Database:</b>	Landmark	<b>Local Co-ordinate Reference:</b>	Well SRC Coyle 32-34D
<b>Company:</b>	Synergy Resources	<b>TVD Reference:</b>	WELL @ 5124.0ft (Original Well Elev)
<b>Project:</b>	SEC.34-T4N-R68W	<b>MD Reference:</b>	WELL @ 5124.0ft (Original Well Elev)
<b>Site:</b>	SRC Coyle 31-34D Pad Sec.34-T4N-R68W	<b>North Reference:</b>	True
<b>Well:</b>	SRC Coyle 32-34D	<b>Survey Calculation Method:</b>	Minimum Curvature
<b>Wellbore:</b>	Wellbore #1		
<b>Design:</b>	Plan #1 (8-23-11)		

Planned Survey									
Measured Depth (ft)	Inclination (°)	Azimuth (°)	Vertical Depth (ft)	+N/-S (ft)	+E/-W (ft)	Vertical Section (ft)	Dogleg Rate (°/100ft)	Build Rate (°/100ft)	Turn Rate (°/100ft)
4,200.0	13.75	221.07	4,114.2	-557.1	-485.4	738.9	0.00	0.00	0.00
4,240.0	13.75	221.07	4,153.0	-564.3	-491.7	748.4	0.00	0.00	0.00
4,280.0	13.75	221.07	4,191.9	-571.4	-497.9	758.0	0.00	0.00	0.00
4,320.0	13.75	221.07	4,230.8	-578.6	-504.2	767.5	0.00	0.00	0.00
4,360.0	13.75	221.07	4,269.6	-585.8	-510.4	777.0	0.00	0.00	0.00
4,400.0	13.75	221.07	4,308.5	-593.0	-516.7	786.5	0.00	0.00	0.00
4,410.7	13.75	221.07	4,318.8	-594.9	-518.4	789.0	0.00	0.00	0.00
4,440.0	13.17	221.07	4,347.3	-600.0	-522.8	795.9	2.00	-2.00	0.00
4,480.0	12.37	221.07	4,386.4	-606.7	-528.6	804.7	2.00	-2.00	0.00
4,520.0	11.57	221.07	4,425.5	-612.9	-534.1	813.0	2.00	-2.00	0.00
4,560.0	10.77	221.07	4,464.7	-618.8	-539.2	820.7	2.00	-2.00	0.00
4,600.0	9.97	221.07	4,504.1	-624.2	-543.9	827.9	2.00	-2.00	0.00
4,640.0	9.17	221.07	4,543.5	-629.2	-548.3	834.6	2.00	-2.00	0.00
4,680.0	8.37	221.07	4,583.1	-633.8	-552.3	840.7	2.00	-2.00	0.00
4,720.0	7.57	221.07	4,622.7	-638.0	-555.9	846.2	2.00	-2.00	0.00
4,760.0	6.77	221.07	4,662.4	-641.8	-559.2	851.2	2.00	-2.00	0.00
4,800.0	5.97	221.07	4,702.1	-645.1	-562.1	855.7	2.00	-2.00	0.00
4,840.0	5.17	221.07	4,741.9	-648.0	-564.7	859.5	2.00	-2.00	0.00
4,880.0	4.37	221.07	4,781.8	-650.5	-566.9	862.9	2.00	-2.00	0.00
4,920.0	3.57	221.07	4,821.7	-652.6	-568.7	865.6	2.00	-2.00	0.00
4,960.0	2.77	221.07	4,861.6	-654.3	-570.1	867.8	2.00	-2.00	0.00
5,000.0	1.97	221.07	4,901.6	-655.5	-571.2	869.5	2.00	-2.00	0.00
5,040.0	1.17	221.07	4,941.6	-656.4	-571.9	870.6	2.00	-2.00	0.00
5,080.0	0.37	221.07	4,981.6	-656.8	-572.3	871.1	2.00	-2.00	0.00
5,098.4	0.00	0.00	5,000.0	-656.8	-572.3	871.2	2.00	-2.00	0.00
TARGET BHL 1990'FNL & 1969'FEL									
5,120.0	0.00	0.00	5,021.6	-656.8	-572.3	871.2	0.00	0.00	0.00
5,160.0	0.00	0.00	5,061.6	-656.8	-572.3	871.2	0.00	0.00	0.00
5,200.0	0.00	0.00	5,101.6	-656.8	-572.3	871.2	0.00	0.00	0.00
5,240.0	0.00	0.00	5,141.6	-656.8	-572.3	871.2	0.00	0.00	0.00
5,280.0	0.00	0.00	5,181.6	-656.8	-572.3	871.2	0.00	0.00	0.00
5,320.0	0.00	0.00	5,221.6	-656.8	-572.3	871.2	0.00	0.00	0.00
5,360.0	0.00	0.00	5,261.6	-656.8	-572.3	871.2	0.00	0.00	0.00
5,400.0	0.00	0.00	5,301.6	-656.8	-572.3	871.2	0.00	0.00	0.00
5,440.0	0.00	0.00	5,341.6	-656.8	-572.3	871.2	0.00	0.00	0.00
5,480.0	0.00	0.00	5,381.6	-656.8	-572.3	871.2	0.00	0.00	0.00
5,520.0	0.00	0.00	5,421.6	-656.8	-572.3	871.2	0.00	0.00	0.00
5,560.0	0.00	0.00	5,461.6	-656.8	-572.3	871.2	0.00	0.00	0.00
5,600.0	0.00	0.00	5,501.6	-656.8	-572.3	871.2	0.00	0.00	0.00
5,640.0	0.00	0.00	5,541.6	-656.8	-572.3	871.2	0.00	0.00	0.00
5,680.0	0.00	0.00	5,581.6	-656.8	-572.3	871.2	0.00	0.00	0.00
5,720.0	0.00	0.00	5,621.6	-656.8	-572.3	871.2	0.00	0.00	0.00
5,760.0	0.00	0.00	5,661.6	-656.8	-572.3	871.2	0.00	0.00	0.00
5,800.0	0.00	0.00	5,701.6	-656.8	-572.3	871.2	0.00	0.00	0.00
5,840.0	0.00	0.00	5,741.6	-656.8	-572.3	871.2	0.00	0.00	0.00
5,880.0	0.00	0.00	5,781.6	-656.8	-572.3	871.2	0.00	0.00	0.00
5,920.0	0.00	0.00	5,821.6	-656.8	-572.3	871.2	0.00	0.00	0.00
5,960.0	0.00	0.00	5,861.6	-656.8	-572.3	871.2	0.00	0.00	0.00
6,000.0	0.00	0.00	5,901.6	-656.8	-572.3	871.2	0.00	0.00	0.00
6,040.0	0.00	0.00	5,941.6	-656.8	-572.3	871.2	0.00	0.00	0.00
6,080.0	0.00	0.00	5,981.6	-656.8	-572.3	871.2	0.00	0.00	0.00
6,120.0	0.00	0.00	6,021.6	-656.8	-572.3	871.2	0.00	0.00	0.00
6,160.0	0.00	0.00	6,061.6	-656.8	-572.3	871.2	0.00	0.00	0.00
6,200.0	0.00	0.00	6,101.6	-656.8	-572.3	871.2	0.00	0.00	0.00

<b>Database:</b>	Landmark	<b>Local Co-ordinate Reference:</b>	Well SRC Coyle 32-34D
<b>Company:</b>	Synergy Resources	<b>TVD Reference:</b>	WELL @ 5124.0ft (Original Well Elev)
<b>Project:</b>	SEC.34-T4N-R68W	<b>MD Reference:</b>	WELL @ 5124.0ft (Original Well Elev)
<b>Site:</b>	SRC Coyle 31-34D Pad Sec.34-T4N-R68W	<b>North Reference:</b>	True
<b>Well:</b>	SRC Coyle 32-34D	<b>Survey Calculation Method:</b>	Minimum Curvature
<b>Wellbore:</b>	Wellbore #1		
<b>Design:</b>	Plan #1 (8-23-11)		

Planned Survey									
Measured Depth (ft)	Inclination (°)	Azimuth (°)	Vertical Depth (ft)	+N/-S (ft)	+E/-W (ft)	Vertical Section (ft)	Dogleg Rate (°/100ft)	Build Rate (°/100ft)	Turn Rate (°/100ft)
6,240.0	0.00	0.00	6,141.6	-656.8	-572.3	871.2	0.00	0.00	0.00
6,280.0	0.00	0.00	6,181.6	-656.8	-572.3	871.2	0.00	0.00	0.00
6,320.0	0.00	0.00	6,221.6	-656.8	-572.3	871.2	0.00	0.00	0.00
6,360.0	0.00	0.00	6,261.6	-656.8	-572.3	871.2	0.00	0.00	0.00
6,400.0	0.00	0.00	6,301.6	-656.8	-572.3	871.2	0.00	0.00	0.00
6,440.0	0.00	0.00	6,341.6	-656.8	-572.3	871.2	0.00	0.00	0.00
6,480.0	0.00	0.00	6,381.6	-656.8	-572.3	871.2	0.00	0.00	0.00
6,520.0	0.00	0.00	6,421.6	-656.8	-572.3	871.2	0.00	0.00	0.00
6,560.0	0.00	0.00	6,461.6	-656.8	-572.3	871.2	0.00	0.00	0.00
6,600.0	0.00	0.00	6,501.6	-656.8	-572.3	871.2	0.00	0.00	0.00
6,640.0	0.00	0.00	6,541.6	-656.8	-572.3	871.2	0.00	0.00	0.00
6,680.0	0.00	0.00	6,581.6	-656.8	-572.3	871.2	0.00	0.00	0.00
6,720.0	0.00	0.00	6,621.6	-656.8	-572.3	871.2	0.00	0.00	0.00
6,760.0	0.00	0.00	6,661.6	-656.8	-572.3	871.2	0.00	0.00	0.00
6,798.4	0.00	0.00	6,700.0	-656.8	-572.3	871.2	0.00	0.00	0.00
LEGAL BOX 400' X 400' 1990'FNL & 1970'FEL									
6,800.0	0.00	0.00	6,701.6	-656.8	-572.3	871.2	0.00	0.00	0.00
6,840.0	0.00	0.00	6,741.6	-656.8	-572.3	871.2	0.00	0.00	0.00
6,880.0	0.00	0.00	6,781.6	-656.8	-572.3	871.2	0.00	0.00	0.00
6,920.0	0.00	0.00	6,821.6	-656.8	-572.3	871.2	0.00	0.00	0.00
6,960.0	0.00	0.00	6,861.6	-656.8	-572.3	871.2	0.00	0.00	0.00
7,000.0	0.00	0.00	6,901.6	-656.8	-572.3	871.2	0.00	0.00	0.00
7,040.0	0.00	0.00	6,941.6	-656.8	-572.3	871.2	0.00	0.00	0.00
7,080.0	0.00	0.00	6,981.6	-656.8	-572.3	871.2	0.00	0.00	0.00
7,120.0	0.00	0.00	7,021.6	-656.8	-572.3	871.2	0.00	0.00	0.00
7,160.0	0.00	0.00	7,061.6	-656.8	-572.3	871.2	0.00	0.00	0.00
7,200.0	0.00	0.00	7,101.6	-656.8	-572.3	871.2	0.00	0.00	0.00
7,240.0	0.00	0.00	7,141.6	-656.8	-572.3	871.2	0.00	0.00	0.00
7,280.0	0.00	0.00	7,181.6	-656.8	-572.3	871.2	0.00	0.00	0.00
7,320.0	0.00	0.00	7,221.6	-656.8	-572.3	871.2	0.00	0.00	0.00
7,360.0	0.00	0.00	7,261.6	-656.8	-572.3	871.2	0.00	0.00	0.00
7,400.0	0.00	0.00	7,301.6	-656.8	-572.3	871.2	0.00	0.00	0.00
7,440.0	0.00	0.00	7,341.6	-656.8	-572.3	871.2	0.00	0.00	0.00
7,480.0	0.00	0.00	7,381.6	-656.8	-572.3	871.2	0.00	0.00	0.00
7,520.0	0.00	0.00	7,421.6	-656.8	-572.3	871.2	0.00	0.00	0.00
7,560.0	0.00	0.00	7,461.6	-656.8	-572.3	871.2	0.00	0.00	0.00
7,600.0	0.00	0.00	7,501.6	-656.8	-572.3	871.2	0.00	0.00	0.00
7,640.0	0.00	0.00	7,541.6	-656.8	-572.3	871.2	0.00	0.00	0.00
7,680.0	0.00	0.00	7,581.6	-656.8	-572.3	871.2	0.00	0.00	0.00
7,720.0	0.00	0.00	7,621.6	-656.8	-572.3	871.2	0.00	0.00	0.00
7,760.0	0.00	0.00	7,661.6	-656.8	-572.3	871.2	0.00	0.00	0.00
7,800.0	0.00	0.00	7,701.6	-656.8	-572.3	871.2	0.00	0.00	0.00
7,840.0	0.00	0.00	7,741.6	-656.8	-572.3	871.2	0.00	0.00	0.00
7,880.0	0.00	0.00	7,781.6	-656.8	-572.3	871.2	0.00	0.00	0.00
7,918.4	0.00	0.00	7,820.0	-656.8	-572.3	871.2	0.00	0.00	0.00
J-SAND									

<b>Database:</b>	Landmark	<b>Local Co-ordinate Reference:</b>	Well SRC Coyle 32-34D
<b>Company:</b>	Synergy Resources	<b>TVD Reference:</b>	WELL @ 5124.0ft (Original Well Elev)
<b>Project:</b>	SEC.34-T4N-R68W	<b>MD Reference:</b>	WELL @ 5124.0ft (Original Well Elev)
<b>Site:</b>	SRC Coyle 31-34D Pad Sec.34-T4N-R68W	<b>North Reference:</b>	True
<b>Well:</b>	SRC Coyle 32-34D	<b>Survey Calculation Method:</b>	Minimum Curvature
<b>Wellbore:</b>	Wellbore #1		
<b>Design:</b>	Plan #1 (8-23-11)		

Targets									
Target Name									
- hit/miss target	Dip Angle	Dip Dir.	TVD	+N/-S	+E/-W	Northing	Easting	Latitude	Longitude
- Shape	(°)	(°)	(ft)	(ft)	(ft)	(ft)	(ft)		
TARGET BHL 1990'F	0.00	0.00	5,000.0	-656.8	-572.3	1,342,240.39	3,143,186.40	40.271712	-104.986853
- plan hits target center									
- Point									
LEGAL BOX 400' X 400'	0.00	0.00	6,700.0	-656.8	-573.3	1,342,240.41	3,143,185.43	40.271712	-104.986856
- plan misses target center by 1.0ft at 6798.4ft MD (6700.0 TVD, -656.8 N, -572.3 E)									
- Rectangle (sides W400.0 H400.0 D1,120.0)									

Casing Points					
Measured Depth	Vertical Depth			Casing Diameter	Hole Diameter
(ft)	(ft)		Name	(")	(")
640.0	640.0	8 5/8"		8-5/8	12-1/4

Formations					
Measured Depth	Vertical Depth			Dip	Dip Direction
(ft)	(ft)		Name	(°)	(°)
7,918.4	7,820.0	J-SAND		0.00	





# **Directional**

## **Synergy Resources**

**SEC.34-T4N-R68W**

**SRC Coyle 31-34D Pad Sec.34-T4N-R68W**

**SRC Coyle 32-34D**

**Wellbore #1**

**Plan #1 (8-23-11)**

## **Anticollision Report**

**25 August, 2011**



<b>Company:</b>	Synergy Resources	<b>Local Co-ordinate Reference:</b>	Well SRC Coyle 32-34D
<b>Project:</b>	SEC.34-T4N-R68W	<b>TVD Reference:</b>	WELL @ 5124.0ft (Original Well Elev)
<b>Reference Site:</b>	SRC Coyle 31-34D Pad Sec.34-T4N-R68W	<b>MD Reference:</b>	WELL @ 5124.0ft (Original Well Elev)
<b>Site Error:</b>	0.0ft	<b>North Reference:</b>	True
<b>Reference Well:</b>	SRC Coyle 32-34D	<b>Survey Calculation Method:</b>	Minimum Curvature
<b>Well Error:</b>	0.0ft	<b>Output errors are at</b>	2.00 sigma
<b>Reference Wellbore</b>	Wellbore #1	<b>Database:</b>	Landmark
<b>Reference Design:</b>	Plan #1 (8-23-11)	<b>Offset TVD Reference:</b>	Offset Datum

Offset Design												Offset Site Error:	0.0 ft
Survey Program: 0-MWD												Offset Well Error:	0.0 ft
Reference		Offset		Semi Major Axis			Distance						Warning
Measured Depth (ft)	Vertical Depth (ft)	Measured Depth (ft)	Vertical Depth (ft)	Reference (ft)	Offset (ft)	Highside Toolface (°)	Offset Wellbore Centre +N/-S (ft)	+E/-W (ft)	Between Centres (ft)	Between Ellipses (ft)	Minimum Separation (ft)	Separation Factor	
1,600.0	1,588.8	1,588.8	1,588.8	4.0	3.5	170.51	14.2	-14.0	123.9	117.1	6.76	18.321	
1,700.0	1,685.9	1,685.9	1,685.9	4.5	3.7	172.03	14.2	-14.0	147.4	140.2	7.22	20.419	
1,800.0	1,783.0	1,783.0	1,783.0	4.9	3.9	173.14	14.2	-14.0	171.0	163.3	7.68	22.263	
1,900.0	1,880.2	1,880.2	1,880.2	5.4	4.1	173.97	14.2	-14.0	194.6	186.5	8.15	23.890	
2,000.0	1,977.3	1,977.3	1,977.3	5.9	4.3	174.63	14.2	-14.0	218.3	209.7	8.62	25.335	
2,100.0	2,074.4	2,074.4	2,074.4	6.4	4.6	175.15	14.2	-14.0	242.0	232.9	9.09	26.624	
2,200.0	2,171.6	2,171.6	2,171.6	6.8	4.8	175.59	14.2	-14.0	265.7	256.1	9.56	27.781	
2,300.0	2,268.7	2,268.7	2,268.7	7.3	5.0	175.95	14.2	-14.0	289.4	279.4	10.04	28.824	
2,400.0	2,365.8	2,365.8	2,365.8	7.8	5.2	176.26	14.2	-14.0	313.1	302.6	10.52	29.768	
2,500.0	2,462.9	2,462.9	2,462.9	8.3	5.4	176.52	14.2	-14.0	336.9	325.9	11.00	30.626	
2,600.0	2,560.1	2,560.1	2,560.1	8.8	5.6	176.75	14.2	-14.0	360.6	349.1	11.48	31.410	
2,700.0	2,657.2	2,657.2	2,657.2	9.3	5.9	176.95	14.2	-14.0	384.3	372.4	11.96	32.128	
2,800.0	2,754.3	2,754.3	2,754.3	9.8	6.1	177.13	14.2	-14.0	408.1	395.6	12.45	32.788	
2,900.0	2,851.5	2,851.5	2,851.5	10.3	6.3	177.29	14.2	-14.0	431.8	418.9	12.93	33.396	
3,000.0	2,948.6	2,948.6	2,948.6	10.8	6.5	177.43	14.2	-14.0	455.6	442.2	13.42	33.959	
3,100.0	3,045.7	3,045.7	3,045.7	11.3	6.7	177.56	14.2	-14.0	479.4	465.5	13.90	34.481	
3,200.0	3,142.9	3,142.9	3,142.9	11.9	7.0	177.67	14.2	-14.0	503.1	488.7	14.39	34.966	
3,300.0	3,240.0	3,240.0	3,240.0	12.4	7.2	177.78	14.2	-14.0	526.9	512.0	14.88	35.418	
3,400.0	3,337.1	3,337.1	3,337.1	12.9	7.4	177.87	14.2	-14.0	550.6	535.3	15.36	35.840	
3,500.0	3,434.3	3,434.3	3,434.3	13.4	7.6	177.96	14.2	-14.0	574.4	558.5	15.85	36.236	
3,600.0	3,531.4	3,531.4	3,531.4	13.9	7.8	178.04	14.2	-14.0	598.2	581.8	16.34	36.606	
3,700.0	3,628.5	3,628.5	3,628.5	14.4	8.0	178.12	14.2	-14.0	621.9	605.1	16.83	36.955	
3,800.0	3,725.7	3,725.7	3,725.7	14.9	8.3	178.19	14.2	-14.0	645.7	628.4	17.32	37.283	
3,900.0	3,822.8	3,822.8	3,822.8	15.4	8.5	178.25	14.2	-14.0	669.5	651.6	17.81	37.592	
4,000.0	3,919.9	3,919.9	3,919.9	15.9	8.7	178.31	14.2	-14.0	693.2	674.9	18.30	37.884	
4,100.0	4,017.1	4,017.1	4,017.1	16.4	8.9	178.37	14.2	-14.0	717.0	698.2	18.79	38.160	
4,200.0	4,114.2	4,114.2	4,114.2	16.9	9.1	178.42	14.2	-14.0	740.8	721.5	19.28	38.422	
4,300.0	4,211.3	4,211.3	4,211.3	17.5	9.4	178.47	14.2	-14.0	764.5	744.8	19.77	38.670	
4,400.0	4,308.5	4,308.5	4,308.5	18.0	9.6	178.51	14.2	-14.0	788.3	768.0	20.26	38.906	
4,410.7	4,318.8	4,318.8	4,318.8	18.0	9.6	178.52	14.2	-14.0	790.8	770.5	20.31	38.930	
4,500.0	4,405.9	4,405.9	4,405.9	18.4	9.8	178.57	14.2	-14.0	810.7	789.9	20.80	38.982	
4,600.0	4,504.1	4,504.1	4,504.1	18.7	10.0	178.61	14.2	-14.0	829.7	808.4	21.29	38.967	
4,700.0	4,602.9	4,602.9	4,602.9	19.0	10.2	178.64	14.2	-14.0	845.3	823.6	21.76	38.849	
4,800.0	4,702.1	4,702.1	4,702.1	19.2	10.5	178.67	14.2	-14.0	857.4	835.2	22.19	38.636	
4,900.0	4,801.7	4,801.7	4,801.7	19.4	10.7	178.68	14.2	-14.0	866.1	843.5	22.59	38.333	
5,000.0	4,901.6	4,901.6	4,901.6	19.6	10.9	178.69	14.2	-14.0	871.3	848.3	22.96	37.946	
5,098.4	5,000.0	5,000.0	5,000.0	19.7	11.1	39.76	14.2	-14.0	873.0	849.7	23.30	37.468	
5,100.0	5,001.6	5,001.6	5,001.6	19.7	11.1	39.76	14.2	-14.0	873.0	849.7	23.31	37.458	
5,200.0	5,101.6	5,101.6	5,101.6	19.8	11.4	39.76	14.2	-14.0	873.0	849.3	23.70	36.838	
5,300.0	5,201.6	5,201.6	5,201.6	19.9	11.6	39.76	14.2	-14.0	873.0	848.9	24.09	36.235	
5,400.0	5,301.6	5,301.6	5,301.6	20.0	11.8	39.76	14.2	-14.0	873.0	848.5	24.49	35.649	
5,500.0	5,401.6	5,401.6	5,401.6	20.1	12.0	39.76	14.2	-14.0	873.0	848.1	24.89	35.079	
5,600.0	5,501.6	5,501.6	5,501.6	20.2	12.3	39.76	14.2	-14.0	873.0	847.7	25.28	34.525	
5,700.0	5,601.6	5,601.6	5,601.6	20.4	12.5	39.76	14.2	-14.0	873.0	847.3	25.69	33.987	
5,800.0	5,701.6	5,701.6	5,701.6	20.5	12.7	39.76	14.2	-14.0	873.0	846.9	26.09	33.463	
5,900.0	5,801.6	5,801.6	5,801.6	20.6	12.9	39.76	14.2	-14.0	873.0	846.5	26.49	32.953	
6,000.0	5,901.6	5,901.6	5,901.6	20.7	13.2	39.76	14.2	-14.0	873.0	846.1	26.90	32.457	
6,100.0	6,001.6	6,001.6	6,001.6	20.8	13.4	39.76	14.2	-14.0	873.0	845.7	27.30	31.974	
6,200.0	6,101.6	6,101.6	6,101.6	21.0	13.6	39.76	14.2	-14.0	873.0	845.3	27.71	31.503	
6,300.0	6,201.6	6,201.6	6,201.6	21.1	13.8	39.76	14.2	-14.0	873.0	844.8	28.12	31.046	
6,400.0	6,301.6	6,301.6	6,301.6	21.2	14.1	39.76	14.2	-14.0	873.0	844.4	28.53	30.599	
6,500.0	6,401.6	6,401.6	6,401.6	21.3	14.3	39.76	14.2	-14.0	873.0	844.0	28.94	30.165	

CC - Min centre to center distance or convergent point, SF - min separation factor, ES - min ellipse separation

<b>Company:</b>	Synergy Resources	<b>Local Co-ordinate Reference:</b>	Well SRC Coyle 32-34D
<b>Project:</b>	SEC.34-T4N-R68W	<b>TVD Reference:</b>	WELL @ 5124.0ft (Original Well Elev)
<b>Reference Site:</b>	SRC Coyle 31-34D Pad Sec.34-T4N-R68W	<b>MD Reference:</b>	WELL @ 5124.0ft (Original Well Elev)
<b>Site Error:</b>	0.0ft	<b>North Reference:</b>	True
<b>Reference Well:</b>	SRC Coyle 32-34D	<b>Survey Calculation Method:</b>	Minimum Curvature
<b>Well Error:</b>	0.0ft	<b>Output errors are at</b>	2.00 sigma
<b>Reference Wellbore</b>	Wellbore #1	<b>Database:</b>	Landmark
<b>Reference Design:</b>	Plan #1 (8-23-11)	<b>Offset TVD Reference:</b>	Offset Datum

<b>Offset Design</b> SRC Coyle 31-34D Pad Sec.34-T4N-R68W - SRC Coyle 34C (Vert.) - Wellbore #1 - Design #1												<b>Offset Site Error:</b>	0.0 ft
Survey Program: 0-MWD												<b>Offset Well Error:</b>	0.0 ft
Reference		Offset		Semi Major Axis			Distance						
Measured Depth (ft)	Vertical Depth (ft)	Measured Depth (ft)	Vertical Depth (ft)	Reference (ft)	Offset (ft)	Highside Toolface (°)	Offset Wellbore Centre +N/-S (ft)	+E/-W (ft)	Between Centres (ft)	Between Ellipses (ft)	Minimum Separation (ft)	Separation Factor	Warning
6,600.0	6,501.6	6,501.6	6,501.6	21.5	14.5	39.76	14.2	-14.0	873.0	843.6	29.35	29.741	
6,700.0	6,601.6	6,601.6	6,601.6	21.6	14.7	39.76	14.2	-14.0	873.0	843.2	29.76	29.329	
6,800.0	6,701.6	6,701.6	6,701.6	21.7	15.0	39.76	14.2	-14.0	873.0	842.8	30.18	28.926	
6,900.0	6,801.6	6,801.6	6,801.6	21.9	15.2	39.76	14.2	-14.0	873.0	842.4	30.59	28.534	
7,000.0	6,901.6	6,901.6	6,901.6	22.0	15.4	39.76	14.2	-14.0	873.0	842.0	31.01	28.151	
7,100.0	7,001.6	7,001.6	7,001.6	22.1	15.6	39.76	14.2	-14.0	873.0	841.5	31.43	27.778	
7,200.0	7,101.6	7,101.6	7,101.6	22.3	15.8	39.76	14.2	-14.0	873.0	841.1	31.84	27.413	
7,300.0	7,201.6	7,201.6	7,201.6	22.4	16.1	39.76	14.2	-14.0	873.0	840.7	32.26	27.058	
7,400.0	7,301.6	7,301.6	7,301.6	22.5	16.3	39.76	14.2	-14.0	873.0	840.3	32.68	26.711	
7,500.0	7,401.6	7,401.6	7,401.6	22.7	16.5	39.76	14.2	-14.0	873.0	839.9	33.10	26.372	
7,600.0	7,501.6	7,501.6	7,501.6	22.8	16.7	39.76	14.2	-14.0	873.0	839.4	33.52	26.041	
7,700.0	7,601.6	7,601.6	7,601.6	23.0	17.0	39.76	14.2	-14.0	873.0	839.0	33.94	25.717	
7,800.0	7,701.6	7,701.6	7,701.6	23.1	17.2	39.76	14.2	-14.0	873.0	838.6	34.37	25.401	
7,900.0	7,801.6	7,801.6	7,801.6	23.3	17.4	39.76	14.2	-14.0	873.0	838.2	34.79	25.093	
7,912.3	7,813.9	7,813.9	7,813.9	23.3	17.5	39.76	14.2	-14.0	873.0	838.1	34.84	25.055	
7,918.4	7,820.0	7,820.0	7,820.0	23.3	17.5	39.76	14.2	-14.0	873.0	838.1	34.87	25.037	

<b>Company:</b>	Synergy Resources	<b>Local Co-ordinate Reference:</b>	Well SRC Coyle 32-34D
<b>Project:</b>	SEC.34-T4N-R68W	<b>TVD Reference:</b>	WELL @ 5124.0ft (Original Well Elev)
<b>Reference Site:</b>	SRC Coyle 31-34D Pad Sec.34-T4N-R68W	<b>MD Reference:</b>	WELL @ 5124.0ft (Original Well Elev)
<b>Site Error:</b>	0.0ft	<b>North Reference:</b>	True
<b>Reference Well:</b>	SRC Coyle 32-34D	<b>Survey Calculation Method:</b>	Minimum Curvature
<b>Well Error:</b>	0.0ft	<b>Output errors are at</b>	2.00 sigma
<b>Reference Wellbore</b>	Wellbore #1	<b>Database:</b>	Landmark
<b>Reference Design:</b>	Plan #1 (8-23-11)	<b>Offset TVD Reference:</b>	Offset Datum

Offset Design													Offset Site Error:	0.0ft
Survey Program: 0-MWD													Offset Well Error:	0.0ft
Reference		Offset		Semi Major Axis			Distance							Warning
Measured Depth (ft)	Vertical Depth (ft)	Measured Depth (ft)	Vertical Depth (ft)	Reference (ft)	Offset (ft)	Highside Toolface (°)	Offset Wellbore Centre +N/-S (ft)	+E/-W (ft)	Between Centres (ft)	Between Ellipses (ft)	Minimum Separation (ft)	Separation Factor		
0.0	0.0	0.0	0.0	0.0	0.0	-44.76	28.4	-28.2	40.0					
100.0	100.0	99.0	99.0	0.1	0.1	-44.76	28.4	-28.2	40.0	39.8	0.22	178.953		
200.0	200.0	199.0	199.0	0.3	0.3	-44.76	28.4	-28.2	40.0	39.3	0.67	59.552		
300.0	300.0	299.1	299.0	0.6	0.5	-47.22	27.1	-29.3	39.9	38.8	1.10	36.241		
326.3	326.3	325.4	325.3	0.6	0.6	-48.69	26.4	-30.0	39.9	38.7	1.22	32.807 CC		
400.0	400.0	398.9	398.7	0.8	0.8	-54.64	23.2	-32.7	40.1	38.6	1.54	26.089 ES		
500.0	500.0	498.2	497.7	1.0	1.0	-66.42	16.8	-38.4	41.9	39.9	2.00	21.013		
600.0	600.0	596.8	595.6	1.2	1.3	-80.43	7.8	-46.3	47.1	44.6	2.46	19.161 SF		
700.0	700.0	694.5	692.1	1.5	1.6	-93.62	-3.6	-56.3	56.8	53.9	2.92	19.485		
750.0	750.0	742.9	739.7	1.6	1.8	-99.26	-10.1	-62.0	63.5	60.4	3.15	20.164		
800.0	800.0	791.1	786.9	1.7	2.0	34.88	-17.2	-68.3	71.1	67.6	3.47	20.513		
900.0	899.9	887.1	880.5	1.9	2.4	27.90	-33.2	-82.3	87.2	83.3	3.90	22.364		
1,000.0	999.7	982.4	972.8	2.1	2.9	23.17	-51.4	-98.3	104.1	99.7	4.35	23.934		
1,100.0	1,099.1	1,077.3	1,063.6	2.3	3.4	19.80	-71.7	-116.2	121.3	116.5	4.81	25.200		
1,200.0	1,198.2	1,171.5	1,153.0	2.5	4.0	17.30	-94.2	-135.9	138.6	133.3	5.29	26.183		
1,300.0	1,296.6	1,268.8	1,244.4	2.8	4.6	15.40	-119.0	-157.7	155.2	149.4	5.80	26.736		
1,400.0	1,394.4	1,367.8	1,337.5	3.2	5.3	14.13	-144.4	-180.0	168.6	162.3	6.32	26.696		
1,437.7	1,431.2	1,405.3	1,372.8	3.3	5.6	13.77	-154.0	-188.5	172.8	166.3	6.52	26.497		
1,500.0	1,491.6	1,467.2	1,430.9	3.6	6.0	13.29	-169.9	-202.4	179.4	172.5	6.88	26.092		
1,600.0	1,588.8	1,566.6	1,524.4	4.0	6.7	12.58	-195.4	-224.9	190.0	182.5	7.45	25.504		
1,700.0	1,685.9	1,666.0	1,617.8	4.5	7.4	11.95	-220.9	-247.3	200.6	192.6	8.03	24.989		
1,800.0	1,783.0	1,765.4	1,711.2	4.9	8.1	11.38	-246.4	-269.7	211.2	202.6	8.61	24.534		
1,900.0	1,880.2	1,864.8	1,804.7	5.4	8.8	10.86	-271.9	-292.1	221.9	212.7	9.19	24.132		
2,000.0	1,977.3	1,964.2	1,898.1	5.9	9.5	10.39	-297.4	-314.5	232.5	222.8	9.78	23.773		
2,100.0	2,074.4	2,063.6	1,991.5	6.4	10.2	9.97	-322.9	-336.9	243.2	232.9	10.37	23.452		
2,200.0	2,171.6	2,163.1	2,085.0	6.8	10.8	9.58	-348.4	-359.3	253.9	243.0	10.96	23.163		
2,300.0	2,268.7	2,262.5	2,178.4	7.3	11.5	9.22	-373.9	-381.7	264.6	253.1	11.55	22.902		
2,400.0	2,365.8	2,361.9	2,271.9	7.8	12.2	8.88	-399.4	-404.1	275.3	263.2	12.15	22.665		
2,500.0	2,462.9	2,461.3	2,365.3	8.3	12.9	8.58	-424.9	-426.5	286.1	273.3	12.74	22.450		
2,600.0	2,560.1	2,560.7	2,458.7	8.8	13.6	8.29	-450.4	-449.0	296.8	283.4	13.34	22.252		
2,700.0	2,657.2	2,660.1	2,552.2	9.3	14.3	8.03	-475.9	-471.4	307.5	293.6	13.93	22.070		
2,800.0	2,754.3	2,759.5	2,645.6	9.8	15.0	7.78	-501.4	-493.8	318.3	303.7	14.53	21.903		
2,900.0	2,851.5	2,858.9	2,739.0	10.3	15.7	7.55	-526.9	-516.2	329.0	313.9	15.13	21.748		
3,000.0	2,948.6	2,958.4	2,832.5	10.8	16.4	7.33	-552.5	-538.6	339.8	324.0	15.73	21.605		
3,100.0	3,045.7	3,057.8	2,925.9	11.3	17.1	7.13	-578.0	-561.0	350.5	334.2	16.32	21.472		
3,200.0	3,142.9	3,157.2	3,019.3	11.9	17.8	6.94	-603.5	-583.4	361.3	344.3	16.92	21.347		
3,300.0	3,240.0	3,256.6	3,112.8	12.4	18.5	6.76	-629.0	-605.8	372.0	354.5	17.52	21.231		
3,400.0	3,337.1	3,356.0	3,206.2	12.9	19.2	6.59	-654.5	-628.2	382.8	364.7	18.12	21.122		
3,500.0	3,434.3	3,455.4	3,299.6	13.4	19.9	6.43	-680.0	-650.6	393.6	374.8	18.72	21.020		
3,600.0	3,531.4	3,554.8	3,393.1	13.9	20.6	6.28	-705.5	-673.0	404.3	385.0	19.32	20.924		
3,700.0	3,628.5	3,654.2	3,486.5	14.4	21.3	6.14	-731.0	-695.5	415.1	395.2	19.93	20.834		
3,800.0	3,725.7	3,753.7	3,580.0	14.9	22.0	6.00	-756.5	-717.9	425.9	405.4	20.53	20.749		
3,900.0	3,822.8	3,853.1	3,673.4	15.4	22.7	5.87	-782.0	-740.3	436.7	415.5	21.13	20.668		
4,000.0	3,919.9	3,952.5	3,766.8	15.9	23.5	5.74	-807.5	-762.7	447.5	425.7	21.73	20.592		
4,100.0	4,017.1	4,051.9	3,860.3	16.4	24.2	5.63	-833.0	-785.1	458.2	435.9	22.33	20.519		
4,200.0	4,114.2	4,151.3	3,953.7	16.9	24.9	5.51	-858.5	-807.5	469.0	446.1	22.93	20.450		
4,300.0	4,211.3	4,250.7	4,047.1	17.5	25.6	5.41	-884.0	-829.9	479.8	456.3	23.54	20.385		
4,400.0	4,308.5	4,350.1	4,140.6	18.0	26.3	5.30	-909.5	-852.3	490.6	466.5	24.14	20.323		
4,410.7	4,318.8	4,360.8	4,150.6	18.0	26.3	5.29	-912.2	-854.7	491.8	467.6	24.21	20.316		
4,500.0	4,405.9	4,449.4	4,233.8	18.4	27.0	5.21	-935.0	-874.7	502.8	478.1	24.70	20.359		
4,600.0	4,504.1	4,548.1	4,326.7	18.7	27.7	5.10	-960.3	-897.0	518.4	493.2	25.18	20.584		
4,700.0	4,602.9	4,646.3	4,418.9	19.0	28.3	4.97	-985.5	-919.1	537.4	511.8	25.63	20.971		

CC - Min centre to center distance or convergent point, SF - min separation factor, ES - min ellipse separation

Offset Design													Offset Site Error: 0.0 ft	
Survey Program: 0-MWD													Offset Well Error: 0.0 ft	
Reference				Semi Major Axis			Distance						Warning	
Measured Depth (ft)	Vertical Depth (ft)	Measured Depth (ft)	Vertical Depth (ft)	Reference (ft)	Offset (ft)	Highside Toolface (°)	Offset Wellbore Centre +N/-S (ft)	+E/-W (ft)	Between Centres (ft)	Between Ellipses (ft)	Minimum Separation (ft)	Separation Factor		
4,800.0	4,702.1	4,743.7	4,510.5	19.2	29.0	4.82	-1,010.5	-941.0	559.8	533.8	26.02	21.516		
4,900.0	4,801.7	4,840.3	4,601.3	19.4	29.7	4.66	-1,035.2	-962.8	585.6	559.3	26.36	22.212		
5,000.0	4,901.6	4,935.9	4,691.2	19.6	30.4	4.50	-1,059.8	-984.4	614.8	588.1	26.66	23.059		
5,098.4	5,000.0	5,029.0	4,778.6	19.7	31.0	-134.59	-1,083.7	-1,005.4	646.7	619.8	26.92	24.028		
5,100.0	5,001.6	5,030.5	4,780.0	19.7	31.1	-134.59	-1,084.0	-1,005.7	647.3	620.3	26.92	24.041		
5,200.0	5,101.6	5,124.5	4,868.4	19.8	31.7	-134.80	-1,108.1	-1,026.9	681.3	654.0	27.37	24.897		
5,300.0	5,201.6	5,230.8	4,968.5	19.9	32.4	-135.00	-1,135.1	-1,050.6	715.1	687.3	27.83	25.693		
5,400.0	5,301.6	5,358.6	5,090.2	20.0	33.0	-135.20	-1,164.3	-1,076.2	745.5	717.1	28.32	26.323		
5,500.0	5,401.6	5,489.9	5,216.9	20.1	33.5	-135.36	-1,190.0	-1,098.8	771.5	742.7	28.80	26.785		
5,600.0	5,501.6	5,624.1	5,348.0	20.2	34.0	-135.49	-1,211.7	-1,117.9	793.0	763.7	29.27	27.092		
5,700.0	5,601.6	5,760.9	5,482.8	20.4	34.4	-135.58	-1,229.1	-1,133.2	809.9	780.2	29.72	27.249		
5,800.0	5,701.6	5,899.6	5,620.5	20.5	34.7	-135.64	-1,241.8	-1,144.3	822.1	791.9	30.16	27.261		
5,900.0	5,801.6	6,039.7	5,760.1	20.6	34.9	-135.68	-1,249.5	-1,151.1	829.4	798.8	30.56	27.141		
6,000.0	5,901.6	6,180.2	5,900.6	20.7	35.0	-135.69	-1,252.1	-1,153.3	831.8	800.9	30.95	26.879		
6,100.0	6,001.6	6,280.2	6,000.6	20.8	35.1	-135.69	-1,252.1	-1,153.3	831.8	800.5	31.26	26.607		
6,200.0	6,101.6	6,380.2	6,100.6	21.0	35.2	-135.69	-1,252.1	-1,153.3	831.8	800.2	31.58	26.340		
6,300.0	6,201.6	6,480.2	6,200.6	21.1	35.2	-135.69	-1,252.1	-1,153.3	831.8	799.9	31.90	26.076		
6,400.0	6,301.6	6,580.2	6,300.6	21.2	35.3	-135.69	-1,252.1	-1,153.3	831.8	799.6	32.22	25.815		
6,500.0	6,401.6	6,680.2	6,400.6	21.3	35.4	-135.69	-1,252.1	-1,153.3	831.8	799.3	32.55	25.556		
6,600.0	6,501.6	6,780.2	6,500.6	21.5	35.5	-135.69	-1,252.1	-1,153.3	831.8	798.9	32.88	25.301		
6,700.0	6,601.6	6,880.2	6,600.6	21.6	35.5	-135.69	-1,252.1	-1,153.3	831.8	798.6	33.21	25.048		
6,800.0	6,701.6	6,980.2	6,700.6	21.7	35.6	-135.69	-1,252.1	-1,153.3	831.8	798.3	33.54	24.799		
6,900.0	6,801.6	7,080.2	6,800.6	21.9	35.7	-135.69	-1,252.1	-1,153.3	831.8	797.9	33.88	24.552		
7,000.0	6,901.6	7,180.2	6,900.6	22.0	35.8	-135.69	-1,252.1	-1,153.3	831.8	797.6	34.22	24.309		
7,100.0	7,001.6	7,280.2	7,000.6	22.1	35.8	-135.69	-1,252.1	-1,153.3	831.8	797.2	34.56	24.069		
7,200.0	7,101.6	7,380.2	7,100.6	22.3	35.9	-135.69	-1,252.1	-1,153.3	831.8	796.9	34.90	23.832		
7,300.0	7,201.6	7,480.2	7,200.6	22.4	36.0	-135.69	-1,252.1	-1,153.3	831.8	796.6	35.25	23.598		
7,400.0	7,301.6	7,580.2	7,300.6	22.5	36.1	-135.69	-1,252.1	-1,153.3	831.8	796.2	35.60	23.367		
7,500.0	7,401.6	7,680.2	7,400.6	22.7	36.2	-135.69	-1,252.1	-1,153.3	831.8	795.9	35.95	23.139		
7,600.0	7,501.6	7,780.2	7,500.6	22.8	36.3	-135.69	-1,252.1	-1,153.3	831.8	795.5	36.30	22.914		
7,700.0	7,601.6	7,880.2	7,600.6	23.0	36.4	-135.69	-1,252.1	-1,153.3	831.8	795.1	36.66	22.693		
7,800.0	7,701.6	7,980.2	7,700.6	23.1	36.4	-135.69	-1,252.1	-1,153.3	831.8	794.8	37.01	22.474		
7,900.0	7,801.6	8,080.2	7,800.6	23.3	36.5	-135.69	-1,252.1	-1,153.3	831.8	794.4	37.37	22.258		
7,918.4	7,820.0	8,098.6	7,819.0	23.3	36.5	-135.69	-1,252.1	-1,153.3	831.8	794.4	37.44	22.219		

<b>Company:</b>	Synergy Resources	<b>Local Co-ordinate Reference:</b>	Well SRC Coyle 32-34D
<b>Project:</b>	SEC.34-T4N-R68W	<b>TVD Reference:</b>	WELL @ 5124.0ft (Original Well Elev)
<b>Reference Site:</b>	SRC Coyle 31-34D Pad Sec.34-T4N-R68W	<b>MD Reference:</b>	WELL @ 5124.0ft (Original Well Elev)
<b>Site Error:</b>	0.0ft	<b>North Reference:</b>	True
<b>Reference Well:</b>	SRC Coyle 32-34D	<b>Survey Calculation Method:</b>	Minimum Curvature
<b>Well Error:</b>	0.0ft	<b>Output errors are at</b>	2.00 sigma
<b>Reference Wellbore</b>	Wellbore #1	<b>Database:</b>	Landmark
<b>Reference Design:</b>	Plan #1 (8-23-11)	<b>Offset TVD Reference:</b>	Offset Datum

Offset Design													Offset Site Error:	0.0ft
Survey Program: 0-MWD													Offset Well Error:	0.0ft
Reference		Offset		Semi Major Axis			Distance							Warning
Measured Depth (ft)	Vertical Depth (ft)	Measured Depth (ft)	Vertical Depth (ft)	Reference (ft)	Offset (ft)	Highside Toolface (°)	Offset Wellbore Centre +N/-S (ft)	+E/-W (ft)	Between Centres (ft)	Between Ellipses (ft)	Minimum Separation (ft)	Separation Factor		
0.0	0.0	1.0	1.0	0.0	0.0	134.94	-14.2	14.2	20.1	20.1	0.00	N/A		
100.0	100.0	101.0	101.0	0.1	0.1	134.94	-14.2	14.2	20.1	19.9	0.23	88.570		
200.0	200.0	201.0	201.0	0.3	0.3	134.94	-14.2	14.2	20.1	19.4	0.68	29.719		
300.0	300.0	301.0	301.0	0.6	0.6	134.94	-14.2	14.2	20.1	19.0	1.13	17.855		
400.0	400.0	401.0	401.0	0.8	0.8	134.94	-14.2	14.2	20.1	18.5	1.58	12.761		
500.0	500.0	501.0	501.0	1.0	1.0	134.94	-14.2	14.2	20.1	18.1	2.03	9.928		
600.0	600.0	601.0	601.0	1.2	1.2	134.94	-14.2	14.2	20.1	17.6	2.47	8.125		
700.0	700.0	701.0	701.0	1.5	1.5	134.94	-14.2	14.2	20.1	17.2	2.92	6.876		
750.0	750.0	751.0	751.0	1.6	1.6	134.94	-14.2	14.2	20.1	17.0	3.15	6.385		
800.0	800.0	801.0	801.0	1.7	1.7	-87.37	-14.2	14.2	20.1	16.7	3.36	5.975		
838.3	838.2	839.2	839.2	1.7	1.8	-90.00	-14.2	14.2	20.1	16.5	3.52	5.704 CC		
900.0	899.9	900.9	900.9	1.9	1.9	-97.28	-14.2	14.2	20.2	16.5	3.77	5.368 ES		
1,000.0	999.7	1,000.7	1,000.7	2.1	2.1	-115.35	-14.2	14.2	22.2	18.0	4.19	5.306 SF		
1,100.0	1,099.1	1,100.1	1,100.1	2.3	2.4	-134.69	-14.2	14.2	28.3	23.7	4.61	6.140		
1,200.0	1,198.2	1,199.5	1,199.4	2.5	2.6	-146.66	-15.9	14.3	39.0	34.0	5.01	7.779		
1,300.0	1,296.6	1,298.9	1,298.7	2.8	2.7	-151.43	-21.1	14.6	52.6	47.2	5.40	9.746		
1,400.0	1,394.4	1,398.3	1,397.7	3.2	2.9	-152.73	-29.7	15.1	68.4	62.6	5.81	11.764		
1,437.7	1,431.2	1,435.8	1,435.0	3.3	3.0	-152.72	-33.8	15.3	74.8	68.9	5.98	12.511		
1,500.0	1,491.6	1,497.7	1,496.4	3.6	3.1	-152.22	-41.7	15.8	85.5	79.2	6.28	13.608		
1,600.0	1,588.8	1,597.2	1,594.8	4.0	3.4	-150.12	-57.2	16.6	101.8	95.0	6.83	14.912		
1,700.0	1,685.9	1,696.8	1,692.5	4.5	3.7	-146.96	-76.1	17.7	117.4	110.0	7.46	15.744		
1,800.0	1,783.0	1,796.2	1,789.3	4.9	4.0	-143.07	-98.2	18.9	132.7	124.5	8.19	16.205		
1,900.0	1,880.2	1,895.0	1,884.9	5.4	4.4	-138.69	-123.6	20.3	148.0	139.0	9.02	16.408		
2,000.0	1,977.3	1,993.2	1,978.8	5.9	4.8	-134.02	-152.0	21.9	164.0	154.1	9.96	16.473		
2,100.0	2,074.4	2,091.0	2,072.2	6.4	5.3	-129.93	-181.1	23.5	180.9	170.0	10.94	16.536		
2,200.0	2,171.6	2,188.8	2,165.5	6.8	5.8	-126.54	-210.1	25.1	198.6	186.7	11.94	16.628		
2,300.0	2,268.7	2,286.6	2,258.9	7.3	6.3	-123.70	-239.2	26.7	216.8	203.9	12.95	16.737		
2,400.0	2,365.8	2,384.4	2,352.3	7.8	6.8	-121.31	-268.3	28.3	235.5	221.5	13.97	16.856		
2,500.0	2,462.9	2,482.2	2,445.6	8.3	7.4	-119.27	-297.3	29.9	254.5	239.5	14.99	16.978		
2,600.0	2,560.1	2,580.0	2,539.0	8.8	7.9	-117.51	-326.4	31.5	273.8	257.8	16.01	17.101		
2,700.0	2,657.2	2,677.8	2,632.4	9.3	8.5	-115.98	-355.5	33.2	293.3	276.3	17.03	17.221		
2,800.0	2,754.3	2,775.6	2,725.7	9.8	9.0	-114.64	-384.6	34.8	313.0	294.9	18.05	17.338		
2,900.0	2,851.5	2,873.4	2,819.1	10.3	9.6	-113.47	-413.6	36.4	332.8	313.7	19.07	17.450		
3,000.0	2,948.6	2,971.2	2,912.4	10.8	10.2	-112.42	-442.7	38.0	352.7	332.6	20.09	17.557		
3,100.0	3,045.7	3,069.0	3,005.8	11.3	10.8	-111.48	-471.8	39.6	372.8	351.7	21.11	17.659		
3,200.0	3,142.9	3,166.8	3,099.2	11.9	11.3	-110.64	-500.9	41.2	392.9	370.8	22.13	17.756		
3,300.0	3,240.0	3,264.6	3,192.5	12.4	11.9	-109.89	-529.9	42.8	413.1	390.0	23.15	17.848		
3,400.0	3,337.1	3,362.4	3,285.9	12.9	12.5	-109.20	-559.0	44.4	433.4	409.2	24.16	17.935		
3,500.0	3,434.3	3,460.2	3,379.3	13.4	13.1	-108.57	-588.1	46.1	453.7	428.5	25.18	18.018		
3,600.0	3,531.4	3,557.9	3,472.6	13.9	13.6	-108.00	-617.2	47.7	474.1	447.9	26.20	18.096		
3,700.0	3,628.5	3,655.7	3,566.0	14.4	14.2	-107.48	-646.2	49.3	494.5	467.3	27.21	18.170		
3,800.0	3,725.7	3,753.5	3,659.3	14.9	14.8	-106.99	-675.3	50.9	514.9	486.7	28.23	18.240		
3,900.0	3,822.8	3,851.3	3,752.7	15.4	15.4	-106.55	-704.4	52.5	535.4	506.1	29.25	18.307		
4,000.0	3,919.9	3,949.1	3,846.1	15.9	16.0	-106.13	-733.5	54.1	555.9	525.6	30.26	18.370		
4,100.0	4,017.1	4,046.9	3,939.4	16.4	16.6	-105.75	-762.5	55.7	576.4	545.2	31.28	18.430		
4,200.0	4,114.2	4,144.7	4,032.8	16.9	17.2	-105.39	-791.6	57.3	597.0	564.7	32.29	18.487		
4,300.0	4,211.3	4,242.5	4,126.2	17.5	17.8	-105.06	-820.7	58.9	617.6	584.3	33.31	18.541		
4,400.0	4,308.5	4,340.3	4,219.5	18.0	18.4	-104.74	-849.7	60.6	638.2	603.8	34.32	18.593		
4,410.7	4,318.8	4,350.8	4,229.5	18.0	18.4	-104.71	-852.9	60.7	640.4	605.9	34.43	18.598		
4,500.0	4,405.9	4,438.2	4,312.9	18.4	18.9	-104.69	-878.8	62.2	658.4	623.1	35.29	18.656		
4,600.0	4,504.1	4,535.9	4,406.2	18.7	19.5	-104.40	-907.9	63.8	677.9	641.8	36.14	18.758		
4,700.0	4,602.9	4,633.5	4,499.4	19.0	20.1	-103.85	-936.9	65.4	696.6	659.7	36.92	18.867		

CC - Min centre to center distance or convergent point, SF - min separation factor, ES - min ellipse separation



SRC Coyle 31-34D Pad Sec.34-T4N-R68W - SRC Coyle 34SD - Wellbore #1 - Plan #1 (8-23-11)													Offset Site Error: 0.0 ft	
Survey Program: 0-MWD													Offset Well Error: 0.0 ft	
Reference		Offset		Semi Major Axis			Distance							Warning
Measured Depth (ft)	Vertical Depth (ft)	Measured Depth (ft)	Vertical Depth (ft)	Reference (ft)	Offset (ft)	Highside Toolface (°)	Offset Wellbore Centre +N/-S (ft)	Offset Wellbore Centre +E/-W (ft)	Between Centres (ft)	Between Ellipses (ft)	Minimum Separation (ft)	Separation Factor		
4,800.0	4,702.1	4,730.9	4,592.4	19.2	20.7	-103.07	-965.8	67.0	714.8	677.2	37.65	18.987		
4,900.0	4,801.7	4,827.8	4,684.9	19.4	21.3	-102.08	-994.7	68.6	732.5	694.2	38.30	19.127		
5,000.0	4,901.6	4,924.3	4,777.0	19.6	21.9	-100.90	-1,023.3	70.2	750.0	711.1	38.87	19.294		
5,098.4	5,000.0	5,018.6	4,867.0	19.7	22.5	121.49	-1,051.4	71.7	767.1	727.7	39.36	19.488		
5,100.0	5,001.6	5,020.1	4,868.4	19.7	22.5	121.52	-1,051.8	71.8	767.4	728.0	39.37	19.492		
5,200.0	5,101.6	5,115.5	4,959.6	19.8	23.0	123.25	-1,080.2	73.3	785.2	745.5	39.77	19.745		
5,300.0	5,201.6	5,211.8	5,051.5	19.9	23.6	124.93	-1,108.8	74.9	803.8	763.6	40.14	20.022		
5,400.0	5,301.6	5,329.5	5,164.5	20.0	24.2	126.74	-1,141.3	76.7	821.6	781.2	40.46	20.307		
5,500.0	5,401.6	5,449.7	5,281.3	20.1	24.6	128.25	-1,169.7	78.3	837.3	796.6	40.71	20.568		
5,600.0	5,501.6	5,572.2	5,401.5	20.2	25.0	129.46	-1,193.5	79.6	850.5	809.5	40.96	20.765		
5,700.0	5,601.6	5,696.6	5,524.4	20.4	25.4	130.40	-1,212.5	80.7	861.0	819.8	41.21	20.892		
5,800.0	5,701.6	5,822.4	5,649.5	20.5	25.6	131.05	-1,226.2	81.4	868.6	827.1	41.46	20.950		
5,900.0	5,801.6	5,949.2	5,776.0	20.6	25.8	131.44	-1,234.5	81.9	873.2	831.4	41.71	20.932		
6,000.0	5,901.6	6,075.8	5,902.6	20.7	26.0	131.57	-1,237.2	82.0	874.6	832.7	41.98	20.834		
6,100.0	6,001.6	6,175.8	6,002.6	20.8	26.1	131.57	-1,237.2	82.0	874.6	832.4	42.22	20.719		
6,200.0	6,101.6	6,275.8	6,102.6	21.0	26.2	131.57	-1,237.2	82.0	874.6	832.2	42.45	20.605		
6,300.0	6,201.6	6,375.8	6,202.6	21.1	26.3	131.57	-1,237.2	82.0	874.6	832.0	42.69	20.490		
6,400.0	6,301.6	6,475.8	6,302.6	21.2	26.4	131.57	-1,237.2	82.0	874.6	831.7	42.93	20.376		
6,500.0	6,401.6	6,575.8	6,402.6	21.3	26.5	131.57	-1,237.2	82.0	874.6	831.5	43.17	20.261		
6,600.0	6,501.6	6,675.8	6,502.6	21.5	26.6	131.57	-1,237.2	82.0	874.6	831.2	43.42	20.145		
6,700.0	6,601.6	6,775.8	6,602.6	21.6	26.7	131.57	-1,237.2	82.0	874.6	831.0	43.67	20.030		
6,800.0	6,701.6	6,875.8	6,702.6	21.7	26.8	131.57	-1,237.2	82.0	874.6	830.7	43.92	19.914		
6,900.0	6,801.6	6,975.8	6,802.6	21.9	26.9	131.57	-1,237.2	82.0	874.6	830.5	44.18	19.799		
7,000.0	6,901.6	7,075.8	6,902.6	22.0	27.0	131.57	-1,237.2	82.0	874.6	830.2	44.44	19.683		
7,100.0	7,001.6	7,175.8	7,002.6	22.1	27.1	131.57	-1,237.2	82.0	874.6	829.9	44.70	19.568		
7,200.0	7,101.6	7,275.8	7,102.6	22.3	27.2	131.57	-1,237.2	82.0	874.6	829.7	44.96	19.452		
7,300.0	7,201.6	7,375.8	7,202.6	22.4	27.3	131.57	-1,237.2	82.0	874.6	829.4	45.23	19.337		
7,400.0	7,301.6	7,475.8	7,302.6	22.5	27.4	131.57	-1,237.2	82.0	874.6	829.1	45.50	19.221		
7,500.0	7,401.6	7,575.8	7,402.6	22.7	27.5	131.57	-1,237.2	82.0	874.6	828.9	45.78	19.106		
7,600.0	7,501.6	7,675.8	7,502.6	22.8	27.6	131.57	-1,237.2	82.0	874.6	828.6	46.05	18.991		
7,700.0	7,601.6	7,775.8	7,602.6	23.0	27.7	131.57	-1,237.2	82.0	874.6	828.3	46.33	18.877		
7,800.0	7,701.6	7,875.8	7,702.6	23.1	27.8	131.57	-1,237.2	82.0	874.6	828.0	46.62	18.763		
7,900.0	7,801.6	7,975.8	7,802.6	23.3	27.9	131.57	-1,237.2	82.0	874.6	827.7	46.90	18.649		
7,911.9	7,813.5	7,987.8	7,814.5	23.3	28.0	131.57	-1,237.2	82.0	874.6	827.7	46.94	18.635		
7,918.4	7,820.0	7,993.3	7,820.0	23.3	28.0	131.57	-1,237.2	82.0	874.6	827.7	46.95	18.628		



<b>Company:</b>	Synergy Resources	<b>Local Co-ordinate Reference:</b>	Well SRC Coyle 32-34D
<b>Project:</b>	SEC.34-T4N-R68W	<b>TVD Reference:</b>	WELL @ 5124.0ft (Original Well Elev)
<b>Reference Site:</b>	SRC Coyle 31-34D Pad Sec.34-T4N-R68W	<b>MD Reference:</b>	WELL @ 5124.0ft (Original Well Elev)
<b>Site Error:</b>	0.0ft	<b>North Reference:</b>	True
<b>Reference Well:</b>	SRC Coyle 32-34D	<b>Survey Calculation Method:</b>	Minimum Curvature
<b>Well Error:</b>	0.0ft	<b>Output errors are at</b>	2.00 sigma
<b>Reference Wellbore</b>	Wellbore #1	<b>Database:</b>	Landmark
<b>Reference Design:</b>	Plan #1 (8-23-11)	<b>Offset TVD Reference:</b>	Offset Datum

Reference Depths are relative to WELL @ 5124.0ft (Original Well Elev) Coordinates are relative to: SRC Coyle 32-34D  
 Offset Depths are relative to Offset Datum Coordinate System is US State Plane 1983, Colorado Northern Zone  
 Central Meridian is -105.500000 ° Grid Convergence at Surface is: 0.33°



<b>Company:</b>	Synergy Resources	<b>Local Co-ordinate Reference:</b>	Well SRC Coyle 32-34D
<b>Project:</b>	SEC.34-T4N-R68W	<b>TVD Reference:</b>	WELL @ 5124.0ft (Original Well Elev)
<b>Reference Site:</b>	SRC Coyle 31-34D Pad Sec.34-T4N-R68W	<b>MD Reference:</b>	WELL @ 5124.0ft (Original Well Elev)
<b>Site Error:</b>	0.0ft	<b>North Reference:</b>	True
<b>Reference Well:</b>	SRC Coyle 32-34D	<b>Survey Calculation Method:</b>	Minimum Curvature
<b>Well Error:</b>	0.0ft	<b>Output errors are at</b>	2.00 sigma
<b>Reference Wellbore</b>	Wellbore #1	<b>Database:</b>	Landmark
<b>Reference Design:</b>	Plan #1 (8-23-11)	<b>Offset TVD Reference:</b>	Offset Datum

Reference Depths are relative to WELL @ 5124.0ft (Original Well Elev) Coordinates are relative to: SRC Coyle 32-34D  
Offset Depths are relative to Offset Datum Coordinate System is US State Plane 1983, Colorado Northern Zone  
Central Meridian is -105.500000 ° Grid Convergence at Surface is: 0.33°

