

ENSIGN

Directional

Well Name: SRC Coyle 41-34D

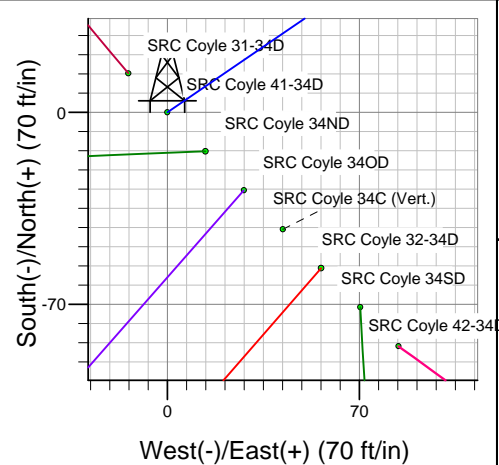
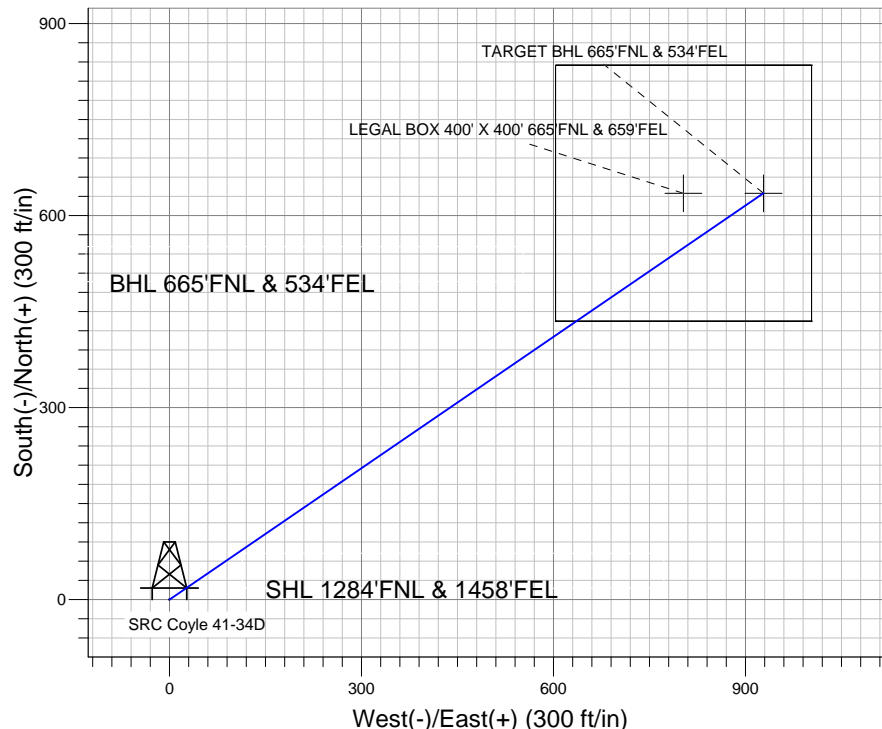
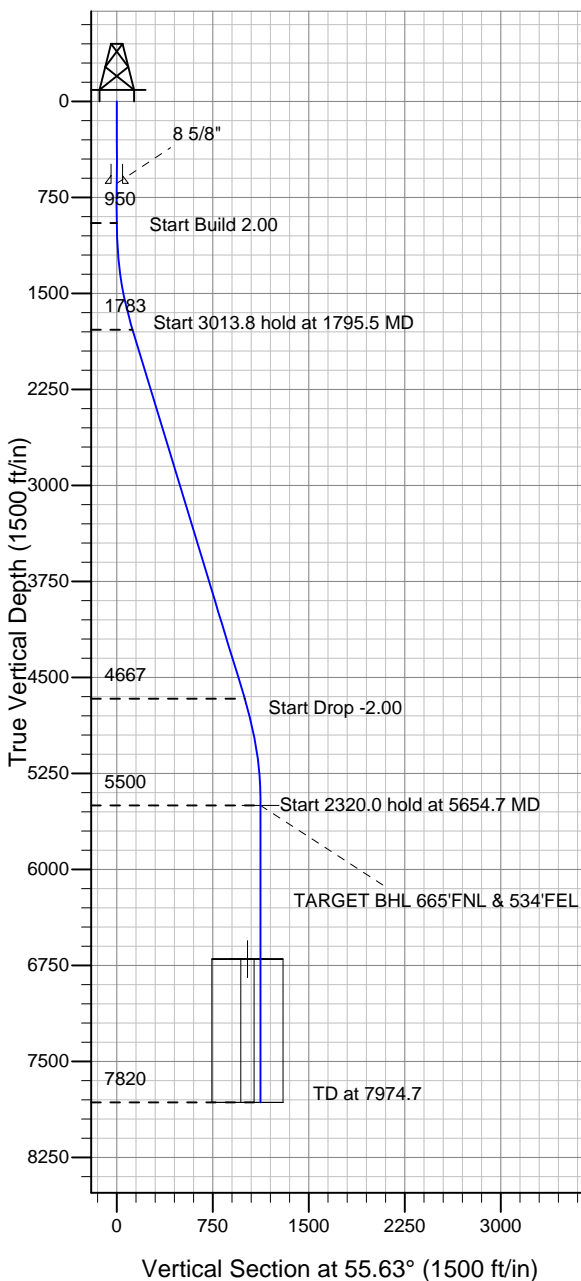
Surface Location: SRC Coyle 31-34D Pad Sec.34-T4N-R68W
 North American Datum 1983 US State Plane 1983 Colorado Northern Zone

Ground Elevation: 5110.0

+N/-S	+E/-W	Northing	Easting	Latitude	Longitude	Slot
0.0	0.0	1342956.98	3143698.46	40.273671	-104.985003	

Original Well Elev WELL @ 5123.0ft (Original Well Elev)

Synergy Resources



SRC Coyle 31-34D Pad Sec.34-T4N-R68W
 SRC Coyle 41-34D
 Plan #1 (8-23-11)
 7:47, August 25 2011



Azimuths to True North
 Magnetic North: 8.94°

Magnetic Field
 Strength: 53018.8snT
 Dip Angle: 66.91°
 Date: 8/23/2011
 Model: IGRF2010

WELLBORE TARGET DETAILS (LAT/LONG)

Name	TVD	+N/-S	+E/-W	Latitude	Longitude	Shape
TARGET BHL 665'FNL & 534'FEL	5500.0	634.7	928.1	40.275413	-104.981677	Point
LEGAL BOX 400' X 400' 665'FNL & 659'FEL	6700.0	634.7	803.1	40.275413	-104.982125	Rectangle (Sides: L400.0 W400.0)

SECTION DETAILS

Sec	MD	Inc	Azi	TVD	+N/-S	+E/-W	DLeg	TFace	VSec	Target
1	0.0	0.00	0.00	0.0	0.0	0.0	0.00	0.00	0.0	
2	950.0	0.00	0.00	950.0	0.0	0.0	0.00	0.00	0.0	
3	1795.5	16.91	55.63	1783.3	69.9	102.2	2.00	55.63	123.9	
4	4809.3	16.91	55.63	4666.7	564.7	825.8	0.00	0.00	1000.5	
5	5654.7	0.00	0.00	5500.0	634.7	928.1	2.00	180.00	1124.3	TARGET BHL 665'FNL & 534'FEL
6	7974.7	0.00	0.00	7820.0	634.7	928.1	0.00	0.00	1124.3	



Directional

Synergy Resources

SEC.34-T4N-R68W

SRC Coyle 31-34D Pad Sec.34-T4N-R68W

SRC Coyle 41-34D

Wellbore #1

Plan: Plan #1 (8-23-11)

Standard Planning Report

25 August, 2011

Plan Sections										
Measured Depth (ft)	Inclination (°)	Azimuth (°)	Vertical Depth (ft)	+N/-S (ft)	+E/-W (ft)	Dogleg Rate (°/100ft)	Build Rate (°/100ft)	Turn Rate (°/100ft)	TFO (°)	Target
0.0	0.00	0.00	0.0	0.0	0.0	0.00	0.00	0.00	0.00	
950.0	0.00	0.00	950.0	0.0	0.0	0.00	0.00	0.00	0.00	
1,795.5	16.91	55.63	1,783.3	69.9	102.2	2.00	2.00	0.00	55.63	
4,809.3	16.91	55.63	4,666.7	564.7	825.8	0.00	0.00	0.00	0.00	
5,654.7	0.00	0.00	5,500.0	634.7	928.1	2.00	-2.00	0.00	180.00	TARGET BHL 665'±
7,974.7	0.00	0.00	7,820.0	634.7	928.1	0.00	0.00	0.00	0.00	

Database:	Landmark	Local Co-ordinate Reference:	Well SRC Coyle 41-34D
Company:	Synergy Resources	TVD Reference:	WELL @ 5123.0ft (Original Well Elev)
Project:	SEC.34-T4N-R68W	MD Reference:	WELL @ 5123.0ft (Original Well Elev)
Site:	SRC Coyle 31-34D Pad Sec.34-T4N-R68W	North Reference:	True
Well:	SRC Coyle 41-34D	Survey Calculation Method:	Minimum Curvature
Wellbore:	Wellbore #1		
Design:	Plan #1 (8-23-11)		

Planned Survey									
Measured Depth (ft)	Inclination (°)	Azimuth (°)	Vertical Depth (ft)	+N/-S (ft)	+E/-W (ft)	Vertical Section (ft)	Dogleg Rate (°/100ft)	Build Rate (°/100ft)	Turn Rate (°/100ft)
0.0	0.00	0.00	0.0	0.0	0.0	0.0	0.00	0.00	0.00
40.0	0.00	0.00	40.0	0.0	0.0	0.0	0.00	0.00	0.00
80.0	0.00	0.00	80.0	0.0	0.0	0.0	0.00	0.00	0.00
120.0	0.00	0.00	120.0	0.0	0.0	0.0	0.00	0.00	0.00
160.0	0.00	0.00	160.0	0.0	0.0	0.0	0.00	0.00	0.00
200.0	0.00	0.00	200.0	0.0	0.0	0.0	0.00	0.00	0.00
240.0	0.00	0.00	240.0	0.0	0.0	0.0	0.00	0.00	0.00
280.0	0.00	0.00	280.0	0.0	0.0	0.0	0.00	0.00	0.00
320.0	0.00	0.00	320.0	0.0	0.0	0.0	0.00	0.00	0.00
360.0	0.00	0.00	360.0	0.0	0.0	0.0	0.00	0.00	0.00
400.0	0.00	0.00	400.0	0.0	0.0	0.0	0.00	0.00	0.00
440.0	0.00	0.00	440.0	0.0	0.0	0.0	0.00	0.00	0.00
480.0	0.00	0.00	480.0	0.0	0.0	0.0	0.00	0.00	0.00
520.0	0.00	0.00	520.0	0.0	0.0	0.0	0.00	0.00	0.00
560.0	0.00	0.00	560.0	0.0	0.0	0.0	0.00	0.00	0.00
600.0	0.00	0.00	600.0	0.0	0.0	0.0	0.00	0.00	0.00
640.0	0.00	0.00	640.0	0.0	0.0	0.0	0.00	0.00	0.00
8 5/8"									
680.0	0.00	0.00	680.0	0.0	0.0	0.0	0.00	0.00	0.00
720.0	0.00	0.00	720.0	0.0	0.0	0.0	0.00	0.00	0.00
760.0	0.00	0.00	760.0	0.0	0.0	0.0	0.00	0.00	0.00
800.0	0.00	0.00	800.0	0.0	0.0	0.0	0.00	0.00	0.00
840.0	0.00	0.00	840.0	0.0	0.0	0.0	0.00	0.00	0.00
880.0	0.00	0.00	880.0	0.0	0.0	0.0	0.00	0.00	0.00
920.0	0.00	0.00	920.0	0.0	0.0	0.0	0.00	0.00	0.00
950.0	0.00	0.00	950.0	0.0	0.0	0.0	0.00	0.00	0.00
960.0	0.20	55.63	960.0	0.0	0.0	0.0	2.00	2.00	0.00
1,000.0	1.00	55.63	1,000.0	0.2	0.4	0.4	2.00	2.00	0.00
1,040.0	1.80	55.63	1,040.0	0.8	1.2	1.4	2.00	2.00	0.00
1,080.0	2.60	55.63	1,080.0	1.7	2.4	2.9	2.00	2.00	0.00
1,120.0	3.40	55.63	1,119.9	2.8	4.2	5.0	2.00	2.00	0.00
1,160.0	4.20	55.63	1,159.8	4.3	6.4	7.7	2.00	2.00	0.00
1,200.0	5.00	55.63	1,199.7	6.2	9.0	10.9	2.00	2.00	0.00
1,240.0	5.80	55.63	1,239.5	8.3	12.1	14.7	2.00	2.00	0.00
1,280.0	6.60	55.63	1,279.3	10.7	15.7	19.0	2.00	2.00	0.00
1,320.0	7.40	55.63	1,319.0	13.5	19.7	23.9	2.00	2.00	0.00
1,360.0	8.20	55.63	1,358.6	16.5	24.2	29.3	2.00	2.00	0.00
1,400.0	9.00	55.63	1,398.2	19.9	29.1	35.3	2.00	2.00	0.00
1,440.0	9.80	55.63	1,437.6	23.6	34.5	41.8	2.00	2.00	0.00
1,480.0	10.60	55.63	1,477.0	27.6	40.4	48.9	2.00	2.00	0.00
1,520.0	11.40	55.63	1,516.2	31.9	46.7	56.5	2.00	2.00	0.00
1,560.0	12.20	55.63	1,555.4	36.5	53.4	64.7	2.00	2.00	0.00
1,600.0	13.00	55.63	1,594.4	41.4	60.6	73.4	2.00	2.00	0.00
1,640.0	13.80	55.63	1,633.3	46.7	68.3	82.7	2.00	2.00	0.00
1,680.0	14.60	55.63	1,672.1	52.2	76.4	92.5	2.00	2.00	0.00
1,720.0	15.40	55.63	1,710.8	58.1	84.9	102.9	2.00	2.00	0.00
1,760.0	16.20	55.63	1,749.3	64.2	93.9	113.7	2.00	2.00	0.00
1,795.5	16.91	55.63	1,783.3	69.9	102.2	123.9	2.00	2.00	0.00
1,800.0	16.91	55.63	1,787.6	70.7	103.3	125.2	0.00	0.00	0.00
1,840.0	16.91	55.63	1,825.9	77.2	112.9	136.8	0.00	0.00	0.00
1,880.0	16.91	55.63	1,864.1	83.8	122.5	148.4	0.00	0.00	0.00
1,920.0	16.91	55.63	1,902.4	90.4	132.1	160.1	0.00	0.00	0.00
1,960.0	16.91	55.63	1,940.7	96.9	141.7	171.7	0.00	0.00	0.00
2,000.0	16.91	55.63	1,978.9	103.5	151.3	183.3	0.00	0.00	0.00

Database:	Landmark	Local Co-ordinate Reference:	Well SRC Coyle 41-34D
Company:	Synergy Resources	TVD Reference:	WELL @ 5123.0ft (Original Well Elev)
Project:	SEC.34-T4N-R68W	MD Reference:	WELL @ 5123.0ft (Original Well Elev)
Site:	SRC Coyle 31-34D Pad Sec.34-T4N-R68W	North Reference:	True
Well:	SRC Coyle 41-34D	Survey Calculation Method:	Minimum Curvature
Wellbore:	Wellbore #1		
Design:	Plan #1 (8-23-11)		

Planned Survey									
Measured Depth (ft)	Inclination (°)	Azimuth (°)	Vertical Depth (ft)	+N/-S (ft)	+E/-W (ft)	Vertical Section (ft)	Dogleg Rate (°/100ft)	Build Rate (°/100ft)	Turn Rate (°/100ft)
2,040.0	16.91	55.63	2,017.2	110.1	160.9	195.0	0.00	0.00	0.00
2,080.0	16.91	55.63	2,055.5	116.6	170.6	206.6	0.00	0.00	0.00
2,120.0	16.91	55.63	2,093.7	123.2	180.2	218.3	0.00	0.00	0.00
2,160.0	16.91	55.63	2,132.0	129.8	189.8	229.9	0.00	0.00	0.00
2,200.0	16.91	55.63	2,170.3	136.3	199.4	241.5	0.00	0.00	0.00
2,240.0	16.91	55.63	2,208.6	142.9	209.0	253.2	0.00	0.00	0.00
2,280.0	16.91	55.63	2,246.8	149.5	218.6	264.8	0.00	0.00	0.00
2,320.0	16.91	55.63	2,285.1	156.0	228.2	276.4	0.00	0.00	0.00
2,360.0	16.91	55.63	2,323.4	162.6	237.8	288.1	0.00	0.00	0.00
2,400.0	16.91	55.63	2,361.6	169.2	247.4	299.7	0.00	0.00	0.00
2,440.0	16.91	55.63	2,399.9	175.7	257.0	311.3	0.00	0.00	0.00
2,480.0	16.91	55.63	2,438.2	182.3	266.6	323.0	0.00	0.00	0.00
2,520.0	16.91	55.63	2,476.5	188.9	276.2	334.6	0.00	0.00	0.00
2,560.0	16.91	55.63	2,514.7	195.4	285.8	346.2	0.00	0.00	0.00
2,600.0	16.91	55.63	2,553.0	202.0	295.4	357.9	0.00	0.00	0.00
2,640.0	16.91	55.63	2,591.3	208.6	305.0	369.5	0.00	0.00	0.00
2,680.0	16.91	55.63	2,629.5	215.1	314.6	381.1	0.00	0.00	0.00
2,720.0	16.91	55.63	2,667.8	221.7	324.2	392.8	0.00	0.00	0.00
2,760.0	16.91	55.63	2,706.1	228.3	333.8	404.4	0.00	0.00	0.00
2,800.0	16.91	55.63	2,744.3	234.8	343.4	416.0	0.00	0.00	0.00
2,840.0	16.91	55.63	2,782.6	241.4	353.0	427.7	0.00	0.00	0.00
2,880.0	16.91	55.63	2,820.9	248.0	362.6	439.3	0.00	0.00	0.00
2,920.0	16.91	55.63	2,859.2	254.5	372.2	450.9	0.00	0.00	0.00
2,960.0	16.91	55.63	2,897.4	261.1	381.8	462.6	0.00	0.00	0.00
3,000.0	16.91	55.63	2,935.7	267.7	391.4	474.2	0.00	0.00	0.00
3,040.0	16.91	55.63	2,974.0	274.3	401.0	485.8	0.00	0.00	0.00
3,080.0	16.91	55.63	3,012.2	280.8	410.6	497.5	0.00	0.00	0.00
3,120.0	16.91	55.63	3,050.5	287.4	420.2	509.1	0.00	0.00	0.00
3,160.0	16.91	55.63	3,088.8	294.0	429.9	520.8	0.00	0.00	0.00
3,200.0	16.91	55.63	3,127.1	300.5	439.5	532.4	0.00	0.00	0.00
3,240.0	16.91	55.63	3,165.3	307.1	449.1	544.0	0.00	0.00	0.00
3,280.0	16.91	55.63	3,203.6	313.7	458.7	555.7	0.00	0.00	0.00
3,320.0	16.91	55.63	3,241.9	320.2	468.3	567.3	0.00	0.00	0.00
3,360.0	16.91	55.63	3,280.1	326.8	477.9	578.9	0.00	0.00	0.00
3,400.0	16.91	55.63	3,318.4	333.4	487.5	590.6	0.00	0.00	0.00
3,440.0	16.91	55.63	3,356.7	339.9	497.1	602.2	0.00	0.00	0.00
3,480.0	16.91	55.63	3,394.9	346.5	506.7	613.8	0.00	0.00	0.00
3,520.0	16.91	55.63	3,433.2	353.1	516.3	625.5	0.00	0.00	0.00
3,560.0	16.91	55.63	3,471.5	359.6	525.9	637.1	0.00	0.00	0.00
3,600.0	16.91	55.63	3,509.8	366.2	535.5	648.7	0.00	0.00	0.00
3,640.0	16.91	55.63	3,548.0	372.8	545.1	660.4	0.00	0.00	0.00
3,680.0	16.91	55.63	3,586.3	379.3	554.7	672.0	0.00	0.00	0.00
3,720.0	16.91	55.63	3,624.6	385.9	564.3	683.6	0.00	0.00	0.00
3,760.0	16.91	55.63	3,662.8	392.5	573.9	695.3	0.00	0.00	0.00
3,800.0	16.91	55.63	3,701.1	399.0	583.5	706.9	0.00	0.00	0.00
3,840.0	16.91	55.63	3,739.4	405.6	593.1	718.5	0.00	0.00	0.00
3,880.0	16.91	55.63	3,777.7	412.2	602.7	730.2	0.00	0.00	0.00
3,920.0	16.91	55.63	3,815.9	418.7	612.3	741.8	0.00	0.00	0.00
3,960.0	16.91	55.63	3,854.2	425.3	621.9	753.4	0.00	0.00	0.00
4,000.0	16.91	55.63	3,892.5	431.9	631.5	765.1	0.00	0.00	0.00
4,040.0	16.91	55.63	3,930.7	438.4	641.1	776.7	0.00	0.00	0.00
4,080.0	16.91	55.63	3,969.0	445.0	650.7	788.3	0.00	0.00	0.00
4,120.0	16.91	55.63	4,007.3	451.6	660.3	800.0	0.00	0.00	0.00
4,160.0	16.91	55.63	4,045.5	458.1	669.9	811.6	0.00	0.00	0.00

Database:	Landmark	Local Co-ordinate Reference:	Well SRC Coyle 41-34D
Company:	Synergy Resources	TVD Reference:	WELL @ 5123.0ft (Original Well Elev)
Project:	SEC.34-T4N-R68W	MD Reference:	WELL @ 5123.0ft (Original Well Elev)
Site:	SRC Coyle 31-34D Pad Sec.34-T4N-R68W	North Reference:	True
Well:	SRC Coyle 41-34D	Survey Calculation Method:	Minimum Curvature
Wellbore:	Wellbore #1		
Design:	Plan #1 (8-23-11)		

Planned Survey									
Measured Depth (ft)	Inclination (°)	Azimuth (°)	Vertical Depth (ft)	+N/-S (ft)	+E/-W (ft)	Vertical Section (ft)	Dogleg Rate (°/100ft)	Build Rate (°/100ft)	Turn Rate (°/100ft)
4,200.0	16.91	55.63	4,083.8	464.7	679.5	823.3	0.00	0.00	0.00
4,240.0	16.91	55.63	4,122.1	471.3	689.2	834.9	0.00	0.00	0.00
4,280.0	16.91	55.63	4,160.4	477.8	698.8	846.5	0.00	0.00	0.00
4,320.0	16.91	55.63	4,198.6	484.4	708.4	858.2	0.00	0.00	0.00
4,360.0	16.91	55.63	4,236.9	491.0	718.0	869.8	0.00	0.00	0.00
4,400.0	16.91	55.63	4,275.2	497.5	727.6	881.4	0.00	0.00	0.00
4,440.0	16.91	55.63	4,313.4	504.1	737.2	893.1	0.00	0.00	0.00
4,480.0	16.91	55.63	4,351.7	510.7	746.8	904.7	0.00	0.00	0.00
4,520.0	16.91	55.63	4,390.0	517.3	756.4	916.3	0.00	0.00	0.00
4,560.0	16.91	55.63	4,428.3	523.8	766.0	928.0	0.00	0.00	0.00
4,600.0	16.91	55.63	4,466.5	530.4	775.6	939.6	0.00	0.00	0.00
4,640.0	16.91	55.63	4,504.8	537.0	785.2	951.2	0.00	0.00	0.00
4,680.0	16.91	55.63	4,543.1	543.5	794.8	962.9	0.00	0.00	0.00
4,720.0	16.91	55.63	4,581.3	550.1	804.4	974.5	0.00	0.00	0.00
4,760.0	16.91	55.63	4,619.6	556.7	814.0	986.1	0.00	0.00	0.00
4,800.0	16.91	55.63	4,657.9	563.2	823.6	997.8	0.00	0.00	0.00
4,809.3	16.91	55.63	4,666.7	564.7	825.8	1,000.5	0.00	0.00	0.00
4,840.0	16.29	55.63	4,696.2	569.7	833.1	1,009.2	2.00	-2.00	0.00
4,880.0	15.49	55.63	4,734.7	575.9	842.1	1,020.2	2.00	-2.00	0.00
4,920.0	14.69	55.63	4,773.3	581.8	850.7	1,030.6	2.00	-2.00	0.00
4,960.0	13.89	55.63	4,812.0	587.3	858.9	1,040.5	2.00	-2.00	0.00
5,000.0	13.09	55.63	4,850.9	592.6	866.6	1,049.8	2.00	-2.00	0.00
5,040.0	12.29	55.63	4,890.0	597.6	873.8	1,058.6	2.00	-2.00	0.00
5,080.0	11.49	55.63	4,929.1	602.2	880.6	1,066.9	2.00	-2.00	0.00
5,120.0	10.69	55.63	4,968.4	606.6	887.0	1,074.6	2.00	-2.00	0.00
5,160.0	9.89	55.63	5,007.7	610.6	892.9	1,081.7	2.00	-2.00	0.00
5,200.0	9.09	55.63	5,047.2	614.3	898.3	1,088.3	2.00	-2.00	0.00
5,240.0	8.29	55.63	5,086.7	617.7	903.3	1,094.4	2.00	-2.00	0.00
5,280.0	7.49	55.63	5,126.3	620.8	907.9	1,099.8	2.00	-2.00	0.00
5,320.0	6.69	55.63	5,166.0	623.6	911.9	1,104.8	2.00	-2.00	0.00
5,360.0	5.89	55.63	5,205.8	626.1	915.6	1,109.2	2.00	-2.00	0.00
5,400.0	5.09	55.63	5,245.6	628.3	918.7	1,113.0	2.00	-2.00	0.00
5,440.0	4.29	55.63	5,285.5	630.1	921.4	1,116.3	2.00	-2.00	0.00
5,480.0	3.49	55.63	5,325.4	631.7	923.7	1,119.0	2.00	-2.00	0.00
5,520.0	2.69	55.63	5,365.3	632.9	925.5	1,121.2	2.00	-2.00	0.00
5,560.0	1.89	55.63	5,405.3	633.8	926.8	1,122.8	2.00	-2.00	0.00
5,600.0	1.09	55.63	5,445.3	634.4	927.6	1,123.8	2.00	-2.00	0.00
5,640.0	0.29	55.63	5,485.3	634.6	928.0	1,124.3	2.00	-2.00	0.00
5,654.7	0.00	0.00	5,500.0	634.7	928.1	1,124.3	2.00	-2.00	0.00
TARGET BHL 665'FNL & 534'FEL									
5,680.0	0.00	0.00	5,525.3	634.7	928.1	1,124.3	0.00	0.00	0.00
5,720.0	0.00	0.00	5,565.3	634.7	928.1	1,124.3	0.00	0.00	0.00
5,760.0	0.00	0.00	5,605.3	634.7	928.1	1,124.3	0.00	0.00	0.00
5,800.0	0.00	0.00	5,645.3	634.7	928.1	1,124.3	0.00	0.00	0.00
5,840.0	0.00	0.00	5,685.3	634.7	928.1	1,124.3	0.00	0.00	0.00
5,880.0	0.00	0.00	5,725.3	634.7	928.1	1,124.3	0.00	0.00	0.00
5,920.0	0.00	0.00	5,765.3	634.7	928.1	1,124.3	0.00	0.00	0.00
5,960.0	0.00	0.00	5,805.3	634.7	928.1	1,124.3	0.00	0.00	0.00
6,000.0	0.00	0.00	5,845.3	634.7	928.1	1,124.3	0.00	0.00	0.00
6,040.0	0.00	0.00	5,885.3	634.7	928.1	1,124.3	0.00	0.00	0.00
6,080.0	0.00	0.00	5,925.3	634.7	928.1	1,124.3	0.00	0.00	0.00
6,120.0	0.00	0.00	5,965.3	634.7	928.1	1,124.3	0.00	0.00	0.00
6,160.0	0.00	0.00	6,005.3	634.7	928.1	1,124.3	0.00	0.00	0.00
6,200.0	0.00	0.00	6,045.3	634.7	928.1	1,124.3	0.00	0.00	0.00

Database:	Landmark	Local Co-ordinate Reference:	Well SRC Coyle 41-34D
Company:	Synergy Resources	TVD Reference:	WELL @ 5123.0ft (Original Well Elev)
Project:	SEC.34-T4N-R68W	MD Reference:	WELL @ 5123.0ft (Original Well Elev)
Site:	SRC Coyle 31-34D Pad Sec.34-T4N-R68W	North Reference:	True
Well:	SRC Coyle 41-34D	Survey Calculation Method:	Minimum Curvature
Wellbore:	Wellbore #1		
Design:	Plan #1 (8-23-11)		

Planned Survey									
Measured Depth (ft)	Inclination (°)	Azimuth (°)	Vertical Depth (ft)	+N/-S (ft)	+E/-W (ft)	Vertical Section (ft)	Dogleg Rate (°/100ft)	Build Rate (°/100ft)	Turn Rate (°/100ft)
6,240.0	0.00	0.00	6,085.3	634.7	928.1	1,124.3	0.00	0.00	0.00
6,280.0	0.00	0.00	6,125.3	634.7	928.1	1,124.3	0.00	0.00	0.00
6,320.0	0.00	0.00	6,165.3	634.7	928.1	1,124.3	0.00	0.00	0.00
6,360.0	0.00	0.00	6,205.3	634.7	928.1	1,124.3	0.00	0.00	0.00
6,400.0	0.00	0.00	6,245.3	634.7	928.1	1,124.3	0.00	0.00	0.00
6,440.0	0.00	0.00	6,285.3	634.7	928.1	1,124.3	0.00	0.00	0.00
6,480.0	0.00	0.00	6,325.3	634.7	928.1	1,124.3	0.00	0.00	0.00
6,520.0	0.00	0.00	6,365.3	634.7	928.1	1,124.3	0.00	0.00	0.00
6,560.0	0.00	0.00	6,405.3	634.7	928.1	1,124.3	0.00	0.00	0.00
6,600.0	0.00	0.00	6,445.3	634.7	928.1	1,124.3	0.00	0.00	0.00
6,640.0	0.00	0.00	6,485.3	634.7	928.1	1,124.3	0.00	0.00	0.00
6,680.0	0.00	0.00	6,525.3	634.7	928.1	1,124.3	0.00	0.00	0.00
6,720.0	0.00	0.00	6,565.3	634.7	928.1	1,124.3	0.00	0.00	0.00
6,760.0	0.00	0.00	6,605.3	634.7	928.1	1,124.3	0.00	0.00	0.00
6,800.0	0.00	0.00	6,645.3	634.7	928.1	1,124.3	0.00	0.00	0.00
6,840.0	0.00	0.00	6,685.3	634.7	928.1	1,124.3	0.00	0.00	0.00
6,854.7	0.00	0.00	6,700.0	634.7	928.1	1,124.3	0.00	0.00	0.00
LEGAL BOX 400' X 400' 665'FNL & 659'FEL									
6,880.0	0.00	0.00	6,725.3	634.7	928.1	1,124.3	0.00	0.00	0.00
6,920.0	0.00	0.00	6,765.3	634.7	928.1	1,124.3	0.00	0.00	0.00
6,960.0	0.00	0.00	6,805.3	634.7	928.1	1,124.3	0.00	0.00	0.00
7,000.0	0.00	0.00	6,845.3	634.7	928.1	1,124.3	0.00	0.00	0.00
7,040.0	0.00	0.00	6,885.3	634.7	928.1	1,124.3	0.00	0.00	0.00
7,080.0	0.00	0.00	6,925.3	634.7	928.1	1,124.3	0.00	0.00	0.00
7,120.0	0.00	0.00	6,965.3	634.7	928.1	1,124.3	0.00	0.00	0.00
7,160.0	0.00	0.00	7,005.3	634.7	928.1	1,124.3	0.00	0.00	0.00
7,200.0	0.00	0.00	7,045.3	634.7	928.1	1,124.3	0.00	0.00	0.00
7,240.0	0.00	0.00	7,085.3	634.7	928.1	1,124.3	0.00	0.00	0.00
7,280.0	0.00	0.00	7,125.3	634.7	928.1	1,124.3	0.00	0.00	0.00
7,320.0	0.00	0.00	7,165.3	634.7	928.1	1,124.3	0.00	0.00	0.00
7,360.0	0.00	0.00	7,205.3	634.7	928.1	1,124.3	0.00	0.00	0.00
7,400.0	0.00	0.00	7,245.3	634.7	928.1	1,124.3	0.00	0.00	0.00
7,440.0	0.00	0.00	7,285.3	634.7	928.1	1,124.3	0.00	0.00	0.00
7,480.0	0.00	0.00	7,325.3	634.7	928.1	1,124.3	0.00	0.00	0.00
7,520.0	0.00	0.00	7,365.3	634.7	928.1	1,124.3	0.00	0.00	0.00
7,560.0	0.00	0.00	7,405.3	634.7	928.1	1,124.3	0.00	0.00	0.00
7,600.0	0.00	0.00	7,445.3	634.7	928.1	1,124.3	0.00	0.00	0.00
7,640.0	0.00	0.00	7,485.3	634.7	928.1	1,124.3	0.00	0.00	0.00
7,680.0	0.00	0.00	7,525.3	634.7	928.1	1,124.3	0.00	0.00	0.00
7,720.0	0.00	0.00	7,565.3	634.7	928.1	1,124.3	0.00	0.00	0.00
7,760.0	0.00	0.00	7,605.3	634.7	928.1	1,124.3	0.00	0.00	0.00
7,800.0	0.00	0.00	7,645.3	634.7	928.1	1,124.3	0.00	0.00	0.00
7,840.0	0.00	0.00	7,685.3	634.7	928.1	1,124.3	0.00	0.00	0.00
7,880.0	0.00	0.00	7,725.3	634.7	928.1	1,124.3	0.00	0.00	0.00
7,920.0	0.00	0.00	7,765.3	634.7	928.1	1,124.3	0.00	0.00	0.00
7,960.0	0.00	0.00	7,805.3	634.7	928.1	1,124.3	0.00	0.00	0.00
7,974.7	0.00	0.00	7,820.0	634.7	928.1	1,124.3	0.00	0.00	0.00
J-SAND									

Database:	Landmark	Local Co-ordinate Reference:	Well SRC Coyle 41-34D
Company:	Synergy Resources	TVD Reference:	WELL @ 5123.0ft (Original Well Elev)
Project:	SEC.34-T4N-R68W	MD Reference:	WELL @ 5123.0ft (Original Well Elev)
Site:	SRC Coyle 31-34D Pad Sec.34-T4N-R68W	North Reference:	True
Well:	SRC Coyle 41-34D	Survey Calculation Method:	Minimum Curvature
Wellbore:	Wellbore #1		
Design:	Plan #1 (8-23-11)		

Targets									
Target Name									
- hit/miss target	Dip Angle (°)	Dip Dir. (°)	TVD (ft)	+N/-S (ft)	+E/-W (ft)	Northing (ft)	Easting (ft)	Latitude	Longitude
- Shape									
TARGET BHL 665'FN	0.00	0.00	5,500.0	634.7	928.1	1,343,596.99	3,144,622.79	40.275413	-104.981677
- plan hits target center									
- Point									
LEGAL BOX 400' X 400'	0.00	0.00	6,700.0	634.7	803.1	1,343,596.31	3,144,497.83	40.275413	-104.982125
- plan misses target center by 125.0ft at 6854.7ft MD (6700.0 TVD, 634.7 N, 928.1 E)									
- Rectangle (sides W400.0 H400.0 D1,120.0)									

Casing Points					
Measured Depth (ft)	Vertical Depth (ft)	Name	Casing Diameter (")	Hole Diameter (")	
640.0	640.0	8 5/8"	8-5/8	12-1/4	

Formations					
Measured Depth (ft)	Vertical Depth (ft)	Name	Lithology	Dip (°)	Dip Direction (°)
7,974.7	7,820.0	J-SAND		0.00	



Directional

Synergy Resources

SEC.34-T4N-R68W

SRC Coyle 31-34D Pad Sec.34-T4N-R68W

SRC Coyle 41-34D

Wellbore #1

Plan #1 (8-23-11)

Anticollision Report

25 August, 2011

Company:	Synergy Resources	Local Co-ordinate Reference:	Well SRC Coyle 41-34D
Project:	SEC.34-T4N-R68W	TVD Reference:	WELL @ 5123.0ft (Original Well Elev)
Reference Site:	SRC Coyle 31-34D Pad Sec.34-T4N-R68W	MD Reference:	WELL @ 5123.0ft (Original Well Elev)
Site Error:	0.0ft	North Reference:	True
Reference Well:	SRC Coyle 41-34D	Survey Calculation Method:	Minimum Curvature
Well Error:	0.0ft	Output errors are at	2.00 sigma
Reference Wellbore	Wellbore #1	Database:	Landmark
Reference Design:	Plan #1 (8-23-11)	Offset TVD Reference:	Offset Datum

Reference	Plan #1 (8-23-11)		
Filter type:	NO GLOBAL FILTER: Using user defined selection & filtering criteria		
Interpolation Method:	Stations	Error Model:	ISCWSA
Depth Range:	Unlimited	Scan Method:	Closest Approach 3D
Results Limited by:	Maximum center-center distance of 10,000.0ft	Error Surface:	Elliptical Conic
Warning Levels Evaluated at:	2.00 Sigma		

Survey Tool Program	Date 8/25/2011			
From (ft)	To (ft)	Survey (Wellbore)	Tool Name	Description
0.0	7,974.7	Plan #1 (8-23-11) (Wellbore #1)	MWD	MWD - Standard

Summary						
Site Name	Reference Measured Depth (ft)	Offset Measured Depth (ft)	Distance Between Centres (ft)	Distance Between Ellipses (ft)	Separation Factor	Warning
Offset Well - Wellbore - Design						
SRC Coyle 31-34D Pad Sec.34-T4N-R68W						
SRC Coyle 31-34D - Wellbore #1 - Plan #1 (8-23-11)	734.6	733.6	20.1	17.0	6.540	CC, ES
SRC Coyle 31-34D - Wellbore #1 - Plan #1 (8-23-11)	800.0	798.7	20.5	17.2	6.097	SF
SRC Coyle 34ND - Wellbore #1 - Plan #1 (8-23-11)	1,091.7	1,091.6	19.6	14.9	4.196	CC
SRC Coyle 34ND - Wellbore #1 - Plan #1 (8-23-11)	1,100.0	1,099.9	19.6	14.9	4.164	ES
SRC Coyle 34ND - Wellbore #1 - Plan #1 (8-23-11)	1,200.0	1,199.7	20.9	15.7	4.054	SF

Offset Design												
SRC Coyle 31-34D Pad Sec.34-T4N-R68W - SRC Coyle 31-34D - Wellbore #1 - Plan #1 (8-23-11)												
Survey Program: 0-MWD												
Reference		Offset		Semi Major Axis			Distance					
Measured Depth (ft)	Vertical Depth (ft)	Measured Depth (ft)	Vertical Depth (ft)	Reference (ft)	Offset (ft)	Highside Toolface (°)	Offset Wellbore Centre +N/-S (ft)	+E/-W (ft)	Between Centres (ft)	Between Ellipses (ft)	Minimum Separation (ft)	Separation Factor
0.0	0.0	0.0	0.0	0.0	0.0	-45.04	14.2	-14.2	20.1			
100.0	100.0	99.0	99.0	0.1	0.1	-45.04	14.2	-14.2	20.1	19.9	0.22	89.930
200.0	200.0	199.0	199.0	0.3	0.3	-45.04	14.2	-14.2	20.1	19.4	0.67	29.927
300.0	300.0	299.0	299.0	0.6	0.6	-45.04	14.2	-14.2	20.1	19.0	1.12	17.932
400.0	400.0	399.0	399.0	0.8	0.8	-45.04	14.2	-14.2	20.1	18.5	1.57	12.801
500.0	500.0	499.0	499.0	1.0	1.0	-45.04	14.2	-14.2	20.1	18.1	2.02	9.953
600.0	600.0	599.0	599.0	1.2	1.2	-45.04	14.2	-14.2	20.1	17.6	2.47	8.142
700.0	700.0	699.0	699.0	1.5	1.5	-45.04	14.2	-14.2	20.1	17.2	2.92	6.888
734.6	734.6	733.6	733.6	1.5	1.5	-45.04	14.2	-14.2	20.1	17.0	3.08	6.540 CC, ES
800.0	800.0	798.7	798.7	1.7	1.7	-44.94	14.5	-14.5	20.5	17.2	3.37	6.097 SF
900.0	900.0	897.8	897.8	1.9	1.9	-44.22	17.1	-16.7	23.9	20.1	3.81	6.286
950.0	950.0	947.3	947.1	2.0	2.0	-43.74	19.4	-18.6	26.9	22.9	4.03	6.682
1,000.0	1,000.0	996.7	996.3	2.1	2.1	-99.62	22.4	-21.0	30.9	26.6	4.26	7.255
1,100.0	1,099.9	1,094.8	1,094.0	2.3	2.4	-103.07	30.1	-27.5	41.8	37.1	4.70	8.905
1,200.0	1,199.7	1,191.9	1,190.1	2.6	2.6	-107.69	40.3	-36.0	57.2	52.0	5.15	11.111
1,300.0	1,299.1	1,287.5	1,284.4	2.8	2.9	-111.88	52.8	-46.5	77.2	71.6	5.61	13.762
1,400.0	1,398.2	1,382.4	1,377.3	3.1	3.2	-115.32	67.4	-58.7	101.8	95.7	6.10	16.703
1,500.0	1,496.6	1,478.3	1,471.1	3.4	3.6	-118.52	82.8	-71.6	129.1	122.5	6.61	19.537
1,600.0	1,594.4	1,573.5	1,564.2	3.7	4.0	-121.52	98.1	-84.4	158.4	151.3	7.15	22.161
1,700.0	1,691.5	1,667.9	1,656.5	4.1	4.3	-124.30	113.3	-97.1	190.0	182.3	7.72	24.599
1,795.5	1,783.3	1,757.2	1,743.8	4.5	4.7	-126.73	127.6	-109.1	222.4	214.1	8.30	26.778
1,800.0	1,787.6	1,761.4	1,747.9	4.5	4.7	-126.87	128.3	-109.6	224.0	215.6	8.33	26.875

CC - Min centre to center distance or convergent point, SF - min separation factor, ES - min ellipse separation

SRC Coyle 31-34D Pad Sec.34-T4N-R68W - SRC Coyle 31-34D - Wellbore #1 - Plan #1 (8-23-11)													Offset Site Error: 0.0 ft	
Survey Program: 0-MWD													Offset Well Error: 0.0 ft	
Reference		Offset		Semi Major Axis			Distance							Warning
Measured Depth (ft)	Vertical Depth (ft)	Measured Depth (ft)	Vertical Depth (ft)	Reference (ft)	Offset (ft)	Highside Toolface (°)	Offset Wellbore Centre +N/-S (ft)	+E/-W (ft)	Between Centres (ft)	Between Ellipses (ft)	Minimum Separation (ft)	Separation Factor		
1,900.0	1,883.3	1,854.3	1,838.8	5.0	5.1	-129.46	143.2	-122.1	259.3	250.4	8.99	28.854		
2,000.0	1,978.9	1,947.3	1,929.7	5.5	5.5	-131.44	158.1	-134.6	295.1	285.4	9.66	30.545		
2,100.0	2,074.6	2,040.3	2,020.6	6.1	5.9	-132.99	173.0	-147.1	331.0	320.7	10.35	31.999		
2,200.0	2,170.3	2,133.3	2,111.5	6.6	6.3	-134.24	188.0	-159.6	367.2	356.1	11.04	33.256		
2,300.0	2,266.0	2,226.2	2,202.4	7.2	6.7	-135.26	202.9	-172.0	403.5	391.7	11.75	34.350		
2,400.0	2,361.6	2,319.2	2,293.4	7.7	7.1	-136.12	217.8	-184.5	439.8	427.4	12.46	35.309		
2,500.0	2,457.3	2,412.2	2,384.3	8.3	7.5	-136.84	232.8	-197.0	476.2	463.1	13.17	36.154		
2,600.0	2,553.0	2,505.1	2,475.2	8.8	7.9	-137.47	247.7	-209.5	512.7	498.8	13.89	36.903		
2,700.0	2,648.7	2,598.1	2,566.1	9.4	8.3	-138.01	262.6	-222.0	549.3	534.7	14.62	37.571		
2,800.0	2,744.3	2,691.1	2,657.0	10.0	8.7	-138.48	277.5	-234.5	585.8	570.5	15.35	38.170		
2,900.0	2,840.0	2,784.0	2,747.9	10.6	9.2	-138.90	292.5	-246.9	622.4	606.4	16.08	38.710		
3,000.0	2,935.7	2,877.0	2,838.8	11.2	9.6	-139.27	307.4	-259.4	659.1	642.3	16.81	39.198		
3,100.0	3,031.4	2,970.0	2,929.7	11.8	10.0	-139.60	322.3	-271.9	695.7	678.2	17.55	39.641		
3,200.0	3,127.1	3,062.9	3,020.6	12.3	10.4	-139.90	337.2	-284.4	732.4	714.1	18.29	40.045		
3,300.0	3,222.7	3,155.9	3,111.5	12.9	10.8	-140.17	352.2	-296.9	769.1	750.1	19.03	40.415		
3,400.0	3,318.4	3,248.9	3,202.5	13.5	11.2	-140.41	367.1	-309.3	805.8	786.0	19.77	40.755		
3,500.0	3,414.1	3,341.9	3,293.4	14.1	11.6	-140.64	382.0	-321.8	842.5	822.0	20.51	41.068		
3,600.0	3,509.8	3,434.8	3,384.3	14.7	12.1	-140.84	396.9	-334.3	879.2	857.9	21.26	41.358		
3,700.0	3,605.4	3,527.8	3,475.2	15.3	12.5	-141.03	411.9	-346.8	915.9	893.9	22.00	41.625		
3,800.0	3,701.1	3,620.8	3,566.1	15.9	12.9	-141.21	426.8	-359.3	952.7	929.9	22.75	41.874		
3,900.0	3,796.8	3,713.7	3,657.0	16.5	13.3	-141.37	441.7	-371.8	989.4	965.9	23.50	42.106		
4,000.0	3,892.5	3,806.7	3,747.9	17.1	13.7	-141.52	456.6	-384.2	1,026.2	1,001.9	24.25	42.322		
4,100.0	3,988.1	3,899.7	3,838.8	17.7	14.2	-141.66	471.6	-396.7	1,062.9	1,037.9	25.00	42.524		
4,200.0	4,083.8	3,992.6	3,929.7	18.3	14.6	-141.79	486.5	-409.2	1,099.7	1,073.9	25.75	42.714		
4,300.0	4,179.5	4,085.6	4,020.7	18.9	15.0	-141.91	501.4	-421.7	1,136.4	1,110.0	26.50	42.891		
4,400.0	4,275.2	4,178.6	4,111.6	19.5	15.4	-142.03	516.3	-434.2	1,173.2	1,146.0	27.25	43.058		
4,500.0	4,370.8	4,271.6	4,202.5	20.1	15.8	-142.13	531.3	-446.7	1,210.0	1,182.0	28.00	43.216		
4,600.0	4,466.5	4,364.5	4,293.4	20.7	16.3	-142.24	546.2	-459.1	1,246.8	1,218.0	28.75	43.364		
4,700.0	4,562.2	4,457.5	4,384.3	21.3	16.7	-142.33	561.1	-471.6	1,283.5	1,254.0	29.50	43.505		
4,809.3	4,666.7	4,596.1	4,520.4	21.9	17.2	-142.55	581.4	-488.6	1,322.5	1,292.2	30.36	43.565		
4,900.0	4,754.0	4,719.9	4,642.8	22.4	17.5	-143.24	595.3	-500.2	1,351.3	1,320.2	31.08	43.478		
5,000.0	4,850.9	4,859.5	4,781.7	22.8	17.8	-143.98	606.0	-509.2	1,377.5	1,345.8	31.76	43.375		
5,100.0	4,948.7	5,001.7	4,923.7	23.1	18.1	-144.72	611.6	-513.9	1,398.0	1,365.6	32.34	43.223		
5,200.0	5,047.2	5,124.2	5,046.2	23.5	18.2	-145.37	612.4	-514.5	1,412.9	1,380.1	32.81	43.060		
5,300.0	5,146.2	5,223.2	5,145.2	23.7	18.4	-145.83	612.4	-514.5	1,424.5	1,391.3	33.22	42.881		
5,400.0	5,245.6	5,322.6	5,244.6	24.0	18.5	-146.16	612.4	-514.5	1,433.4	1,399.8	33.59	42.673		
5,500.0	5,345.3	5,422.4	5,344.3	24.1	18.6	-146.39	612.4	-514.5	1,439.3	1,405.4	33.92	42.435		
5,600.0	5,445.3	5,522.3	5,444.3	24.3	18.8	-146.50	612.4	-514.5	1,442.3	1,408.1	34.21	42.166		
5,654.7	5,500.0	5,577.0	5,499.0	24.3	18.8	-90.88	612.4	-514.5	1,442.8	1,408.4	34.35	42.004		
5,700.0	5,545.3	5,622.3	5,544.3	24.4	18.9	-90.88	612.4	-514.5	1,442.8	1,408.3	34.48	41.845		
5,800.0	5,645.3	5,722.3	5,644.3	24.5	19.0	-90.88	612.4	-514.5	1,442.8	1,408.0	34.77	41.489		
5,900.0	5,745.3	5,822.3	5,744.3	24.6	19.2	-90.88	612.4	-514.5	1,442.8	1,407.7	35.07	41.136		
6,000.0	5,845.3	5,922.3	5,844.3	24.7	19.3	-90.88	612.4	-514.5	1,442.8	1,407.4	35.38	40.784		
6,100.0	5,945.3	6,022.3	5,944.3	24.8	19.5	-90.88	612.4	-514.5	1,442.8	1,407.1	35.68	40.435		
6,200.0	6,045.3	6,122.3	6,044.3	24.9	19.6	-90.88	612.4	-514.5	1,442.8	1,406.8	35.99	40.088		
6,300.0	6,145.3	6,222.3	6,144.3	25.1	19.8	-90.88	612.4	-514.5	1,442.8	1,406.5	36.30	39.744		
6,400.0	6,245.3	6,322.3	6,244.3	25.2	19.9	-90.88	612.4	-514.5	1,442.8	1,406.2	36.62	39.403		
6,500.0	6,345.3	6,422.3	6,344.3	25.3	20.1	-90.88	612.4	-514.5	1,442.8	1,405.8	36.93	39.065		
6,600.0	6,445.3	6,522.3	6,444.3	25.4	20.2	-90.88	612.4	-514.5	1,442.8	1,405.5	37.25	38.730		
6,700.0	6,545.3	6,622.3	6,544.3	25.5	20.4	-90.88	612.4	-514.5	1,442.8	1,405.2	37.57	38.397		
6,800.0	6,645.3	6,722.3	6,644.3	25.7	20.5	-90.88	612.4	-514.5	1,442.8	1,404.9	37.90	38.068		
6,900.0	6,745.3	6,822.3	6,744.3	25.8	20.7	-90.88	612.4	-514.5	1,442.8	1,404.6	38.23	37.742		

Company:	Synergy Resources	Local Co-ordinate Reference:	Well SRC Coyle 41-34D
Project:	SEC.34-T4N-R68W	TVD Reference:	WELL @ 5123.0ft (Original Well Elev)
Reference Site:	SRC Coyle 31-34D Pad Sec.34-T4N-R68W	MD Reference:	WELL @ 5123.0ft (Original Well Elev)
Site Error:	0.0ft	North Reference:	True
Reference Well:	SRC Coyle 41-34D	Survey Calculation Method:	Minimum Curvature
Well Error:	0.0ft	Output errors are at	2.00 sigma
Reference Wellbore	Wellbore #1	Database:	Landmark
Reference Design:	Plan #1 (8-23-11)	Offset TVD Reference:	Offset Datum

Offset Design												Offset Site Error:	0.0 ft
SRC Coyle 31-34D Pad Sec.34-T4N-R68W - SRC Coyle 31-34D - Wellbore #1 - Plan #1 (8-23-11)												Offset Well Error:	0.0 ft
Survey Program: 0-MWD													
Reference		Offset		Semi Major Axis			Distance						
Measured Depth (ft)	Vertical Depth (ft)	Measured Depth (ft)	Vertical Depth (ft)	Reference (ft)	Offset (ft)	Highside Toolface (°)	Offset Wellbore Centre +N/-S (ft)	+E/-W (ft)	Between Centres (ft)	Between Ellipses (ft)	Minimum Separation (ft)	Separation Factor	Warning
7,000.0	6,845.3	6,922.3	6,844.3	25.9	20.8	-90.88	612.4	-514.5	1,442.8	1,404.2	38.56	37.419	
7,100.0	6,945.3	7,022.3	6,944.3	26.0	21.0	-90.88	612.4	-514.5	1,442.8	1,403.9	38.89	37.099	
7,200.0	7,045.3	7,122.3	7,044.3	26.2	21.2	-90.88	612.4	-514.5	1,442.8	1,403.6	39.22	36.783	
7,300.0	7,145.3	7,222.3	7,144.3	26.3	21.3	-90.88	612.4	-514.5	1,442.8	1,403.2	39.56	36.470	
7,400.0	7,245.3	7,322.3	7,244.3	26.4	21.5	-90.88	612.4	-514.5	1,442.8	1,402.9	39.90	36.160	
7,500.0	7,345.3	7,422.3	7,344.3	26.6	21.7	-90.88	612.4	-514.5	1,442.8	1,402.5	40.24	35.853	
7,600.0	7,445.3	7,522.3	7,444.3	26.7	21.8	-90.88	612.4	-514.5	1,442.8	1,402.2	40.59	35.550	
7,700.0	7,545.3	7,622.3	7,544.3	26.8	22.0	-90.88	612.4	-514.5	1,442.8	1,401.9	40.93	35.249	
7,800.0	7,645.3	7,722.3	7,644.3	27.0	22.1	-90.88	612.4	-514.5	1,442.8	1,401.5	41.28	34.953	
7,900.0	7,745.3	7,822.3	7,744.3	27.1	22.3	-90.88	612.4	-514.5	1,442.8	1,401.2	41.63	34.659	
7,974.7	7,820.0	7,897.0	7,819.0	27.2	22.4	-90.88	612.4	-514.5	1,442.8	1,400.9	41.89	34.442	

Company:	Synergy Resources	Local Co-ordinate Reference:	Well SRC Coyle 41-34D
Project:	SEC.34-T4N-R68W	TVD Reference:	WELL @ 5123.0ft (Original Well Elev)
Reference Site:	SRC Coyle 31-34D Pad Sec.34-T4N-R68W	MD Reference:	WELL @ 5123.0ft (Original Well Elev)
Site Error:	0.0ft	North Reference:	True
Reference Well:	SRC Coyle 41-34D	Survey Calculation Method:	Minimum Curvature
Well Error:	0.0ft	Output errors are at	2.00 sigma
Reference Wellbore	Wellbore #1	Database:	Landmark
Reference Design:	Plan #1 (8-23-11)	Offset TVD Reference:	Offset Datum

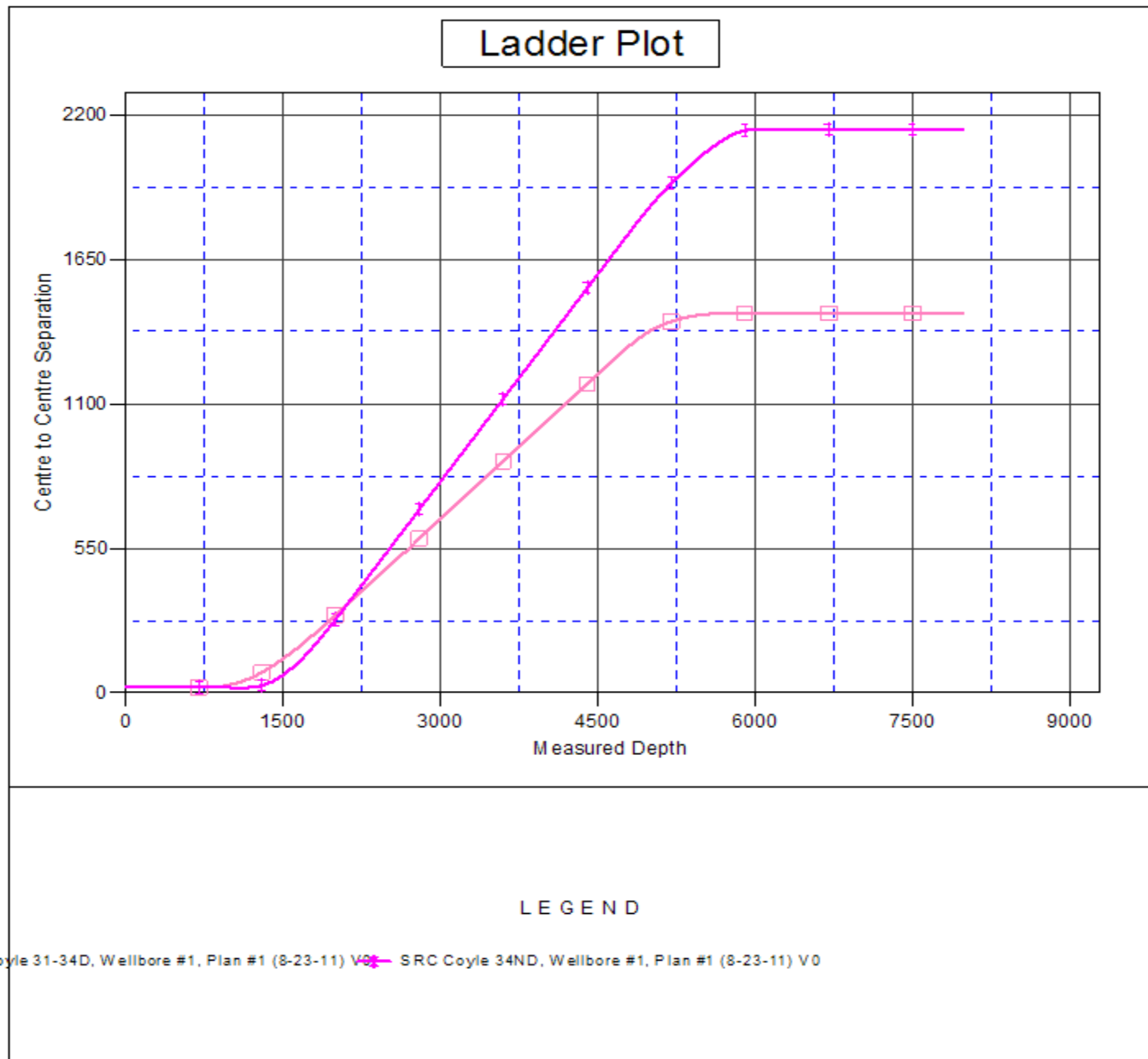
Offset Design												Offset Site Error:	0.0ft
Survey Program: 0-MWD												Offset Well Error:	0.0ft
Reference		Offset		Semi Major Axis			Distance						
Measured Depth (ft)	Vertical Depth (ft)	Measured Depth (ft)	Vertical Depth (ft)	Reference (ft)	Offset (ft)	Highside Toolface (°)	Offset Wellbore Centre +N/-S (ft)	+E/-W (ft)	Between Centres (ft)	Between Ellipses (ft)	Minimum Separation (ft)	Separation Factor	Warning
0.0	0.0	0.0	0.0	0.0	0.0	135.50	-14.2	14.0	19.9	19.9	0.00	N/A	
100.0	100.0	100.0	100.0	0.1	0.1	135.50	-14.2	14.0	19.9	19.7	0.22	88.568	
200.0	200.0	200.0	200.0	0.3	0.3	135.50	-14.2	14.0	19.9	19.2	0.67	29.523	
300.0	300.0	300.0	300.0	0.6	0.6	135.50	-14.2	14.0	19.9	18.8	1.12	17.714	
400.0	400.0	400.0	400.0	0.8	0.8	135.50	-14.2	14.0	19.9	18.3	1.57	12.653	
500.0	500.0	500.0	500.0	1.0	1.0	135.50	-14.2	14.0	19.9	17.9	2.02	9.841	
600.0	600.0	600.0	600.0	1.2	1.2	135.50	-14.2	14.0	19.9	17.4	2.47	8.052	
700.0	700.0	700.0	700.0	1.5	1.5	135.50	-14.2	14.0	19.9	17.0	2.92	6.813	
800.0	800.0	800.0	800.0	1.7	1.7	135.50	-14.2	14.0	19.9	16.5	3.37	5.905	
900.0	900.0	900.0	900.0	1.9	1.9	135.50	-14.2	14.0	19.9	16.1	3.82	5.210	
950.0	950.0	950.0	950.0	2.0	2.0	135.50	-14.2	14.0	19.9	15.9	4.05	4.920	
1,000.0	1,000.0	1,000.0	1,000.0	2.1	2.1	81.11	-14.2	14.0	19.8	15.6	4.27	4.648	
1,091.7	1,091.6	1,091.6	1,091.6	2.3	2.3	90.00	-14.2	14.0	19.6	14.9	4.67	4.196 CC	
1,100.0	1,099.9	1,099.9	1,099.9	2.3	2.4	91.24	-14.2	14.0	19.6	14.9	4.71	4.164 ES	
1,200.0	1,199.7	1,199.7	1,199.7	2.6	2.6	111.79	-14.2	13.5	20.9	15.7	5.15	4.054 SF	
1,300.0	1,299.1	1,298.8	1,298.7	2.8	2.8	140.00	-14.4	10.1	27.5	21.9	5.56	4.936	
1,400.0	1,398.2	1,396.1	1,395.8	3.1	3.0	160.66	-14.6	3.4	43.1	37.1	5.97	7.219	
1,500.0	1,496.6	1,491.3	1,490.5	3.4	3.2	172.15	-15.0	-6.3	67.2	60.8	6.38	10.533	
1,600.0	1,594.4	1,583.6	1,582.0	3.7	3.4	178.63	-15.5	-18.8	98.5	91.7	6.79	14.513	
1,700.0	1,691.5	1,672.8	1,669.9	4.1	3.7	-177.40	-16.1	-33.6	136.3	129.1	7.19	18.946	
1,795.5	1,783.3	1,754.5	1,750.0	4.5	3.9	-174.86	-16.8	-49.5	177.9	170.3	7.58	23.480	
1,800.0	1,787.6	1,758.3	1,753.7	4.5	3.9	-174.76	-16.8	-50.3	180.0	172.4	7.60	23.693	
1,900.0	1,883.3	1,840.7	1,834.0	5.0	4.2	-172.95	-17.5	-68.8	227.7	219.7	8.05	28.288	
2,000.0	1,978.9	1,920.6	1,911.4	5.5	4.6	-171.54	-18.3	-89.0	277.8	269.3	8.51	32.640	
2,100.0	2,074.6	2,002.2	1,989.8	6.1	4.9	-170.36	-19.2	-111.5	329.9	320.9	8.99	36.704	
2,200.0	2,170.3	2,087.2	2,071.5	6.6	5.3	-169.45	-20.2	-135.1	382.3	372.8	9.47	40.360	
2,300.0	2,266.0	2,172.3	2,153.1	7.2	5.7	-168.75	-21.2	-158.8	434.8	424.8	9.97	43.632	
2,400.0	2,361.6	2,257.3	2,234.7	7.7	6.2	-168.20	-22.1	-182.5	487.3	476.9	10.47	46.565	
2,500.0	2,457.3	2,342.3	2,316.4	8.3	6.6	-167.76	-23.1	-206.2	539.9	528.9	10.97	49.198	
2,600.0	2,553.0	2,427.3	2,398.0	8.8	7.1	-167.40	-24.0	-229.9	592.4	581.0	11.49	51.571	
2,700.0	2,648.7	2,512.3	2,479.7	9.4	7.5	-167.10	-25.0	-253.5	645.0	633.0	12.01	53.717	
2,800.0	2,744.3	2,597.3	2,561.3	10.0	8.0	-166.84	-25.9	-277.2	697.6	685.1	12.53	55.662	
2,900.0	2,840.0	2,682.3	2,643.0	10.6	8.5	-166.62	-26.9	-300.9	750.2	737.2	13.06	57.430	
3,000.0	2,935.7	2,767.4	2,724.6	11.2	9.0	-166.43	-27.8	-324.6	802.8	789.2	13.60	59.045	
3,100.0	3,031.4	2,852.4	2,806.3	11.8	9.4	-166.26	-28.8	-348.2	855.4	841.3	14.13	60.523	
3,200.0	3,127.1	2,937.4	2,887.9	12.3	9.9	-166.11	-29.7	-371.9	908.1	893.4	14.67	61.880	
3,300.0	3,222.7	3,022.4	2,969.5	12.9	10.4	-165.97	-30.7	-395.6	960.7	945.5	15.22	63.130	
3,400.0	3,318.4	3,107.4	3,051.2	13.5	10.9	-165.86	-31.6	-419.3	1,013.3	997.6	15.76	64.283	
3,500.0	3,414.1	3,192.4	3,132.8	14.1	11.4	-165.75	-32.6	-442.9	1,066.0	1,049.6	16.31	65.349	
3,600.0	3,509.8	3,277.4	3,214.5	14.7	11.9	-165.65	-33.5	-466.6	1,118.6	1,101.7	16.86	66.338	
3,700.0	3,605.4	3,362.5	3,296.1	15.3	12.4	-165.56	-34.5	-490.3	1,171.2	1,153.8	17.41	67.257	
3,800.0	3,701.1	3,447.5	3,377.8	15.9	12.9	-165.48	-35.5	-514.0	1,223.9	1,205.9	17.97	68.113	
3,900.0	3,796.8	3,532.5	3,459.4	16.5	13.4	-165.41	-36.4	-537.7	1,276.5	1,258.0	18.52	68.912	
4,000.0	3,892.5	3,617.5	3,541.1	17.1	13.9	-165.34	-37.4	-561.3	1,329.1	1,310.1	19.08	69.659	
4,100.0	3,988.1	3,702.5	3,622.7	17.7	14.4	-165.28	-38.3	-585.0	1,381.8	1,362.1	19.64	70.359	
4,200.0	4,083.8	3,787.5	3,704.3	18.3	14.9	-165.22	-39.3	-608.7	1,434.4	1,414.2	20.20	71.015	
4,300.0	4,179.5	3,872.5	3,786.0	18.9	15.4	-165.16	-40.2	-632.4	1,487.1	1,466.3	20.76	71.632	
4,400.0	4,275.2	3,957.5	3,867.6	19.5	15.9	-165.11	-41.2	-656.0	1,539.7	1,518.4	21.32	72.212	
4,500.0	4,370.8	4,042.6	3,949.3	20.1	16.4	-165.06	-42.1	-679.7	1,592.3	1,570.5	21.89	72.760	
4,600.0	4,466.5	4,127.6	4,030.9	20.7	16.9	-165.02	-43.1	-703.4	1,645.0	1,622.5	22.45	73.276	
4,700.0	4,562.2	4,212.6	4,112.6	21.3	17.4	-164.98	-44.0	-727.1	1,697.6	1,674.6	23.01	73.765	
4,809.3	4,666.7	4,305.5	4,201.8	21.9	17.9	-164.94	-45.1	-752.9	1,755.2	1,731.5	23.63	74.269	

CC - Min centre to center distance or convergent point, SF - min separation factor, ES - min ellipse separation

Company: Synergy Resources
Project: SEC.34-T4N-R68W
Reference Site: SRC Coyle 31-34D Pad Sec.34-T4N-R68W
Site Error: 0.0ft
Reference Well: SRC Coyle 41-34D
Well Error: 0.0ft
Reference Wellbore: Wellbore #1
Reference Design: Plan #1 (8-23-11)

Local Co-ordinate Reference: Well SRC Coyle 41-34D
TVD Reference: WELL @ 5123.0ft (Original Well Elev)
MD Reference: WELL @ 5123.0ft (Original Well Elev)
North Reference: True
Survey Calculation Method: Minimum Curvature
Output errors are at 2.00 sigma
Database: Landmark
Offset TVD Reference: Offset Datum

Reference Depths are relative to WELL @ 5123.0ft (Original Well Elev) Coordinates are relative to: SRC Coyle 41-34D
Offset Depths are relative to Offset Datum Coordinate System is US State Plane 1983, Colorado Northern Zone
Central Meridian is -105.500000 ° Grid Convergence at Surface is: 0.33°



Company:	Synergy Resources	Local Co-ordinate Reference:	Well SRC Coyle 41-34D
Project:	SEC.34-T4N-R68W	TVD Reference:	WELL @ 5123.0ft (Original Well Elev)
Reference Site:	SRC Coyle 31-34D Pad Sec.34-T4N-R68W	MD Reference:	WELL @ 5123.0ft (Original Well Elev)
Site Error:	0.0ft	North Reference:	True
Reference Well:	SRC Coyle 41-34D	Survey Calculation Method:	Minimum Curvature
Well Error:	0.0ft	Output errors are at	2.00 sigma
Reference Wellbore	Wellbore #1	Database:	Landmark
Reference Design:	Plan #1 (8-23-11)	Offset TVD Reference:	Offset Datum

Reference Depths are relative to WELL @ 5123.0ft (Original Well Elev) Coordinates are relative to: SRC Coyle 41-34D
 Offset Depths are relative to Offset Datum Coordinate System is US State Plane 1983, Colorado Northern Zone
 Central Meridian is -105.500000 ° Grid Convergence at Surface is: 0.33°

