

ENSIGN

Directional

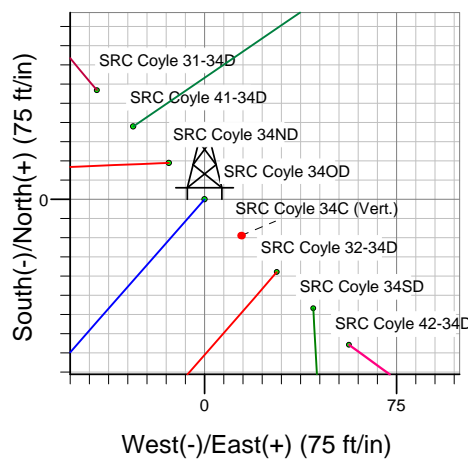
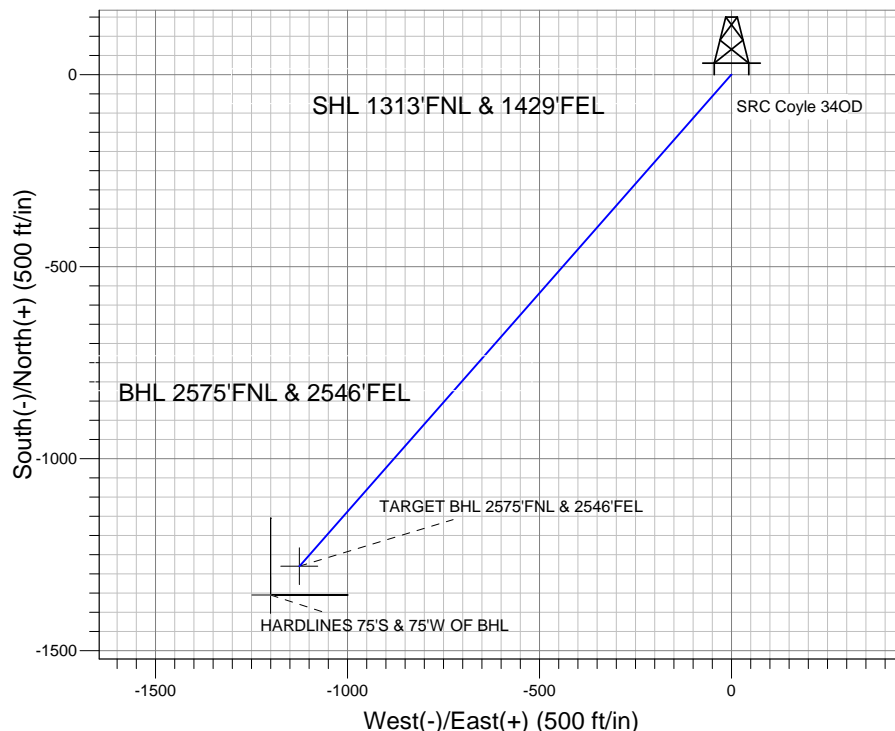
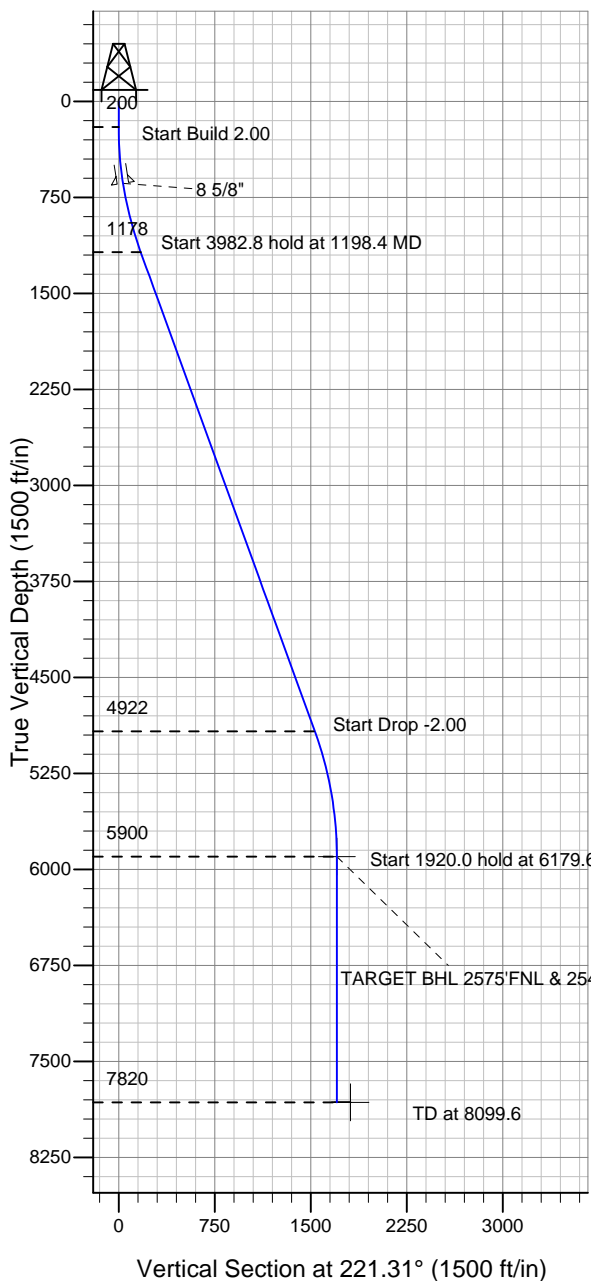
Well Name: SRC Coyle 340D

Surface Location: SRC Coyle 31-34D Pad Sec.34-T4N-R68W
 North American Datum 1983 US State Plane 1983 Colorado Northern Zone

Ground Elevation: 5110.0

+N/-S	+E/-W	Northing	Easting	Latitude	Longitude	Slot
0.0	0.0	1342928.74	3143726.53	40.273593	-104.984903	
Original Well Elev WELL @ 5123.0ft (Original Well Elev)						

Synergy Resources



SRC Coyle 31-34D Pad Sec.34-T4N-R68W
 SRC Coyle 340D
 Plan #1 (8-23-11)
 8:12, August 25 2011



Azimuths to True North
 Magnetic North: 8.94°

Magnetic Field
 Strength: 53018.8snT
 Dip Angle: 66.91°
 Date: 8/23/2011
 Model: IGRF2010

WELLBORE TARGET DETAILS (LAT/LONG)

Name	TVD	+N/-S	+E/-W	Latitude	Longitude	Shape
TARGET BHL 2575'FNL & 2546'FEL	5900.0	-1280.5	-1125.2	40.270078	-104.988935	Point
HARDLINES 75'S & 75'W OF BHL	7820.0	-1355.5	-1200.2	40.269872	-104.989204	Polygon

SECTION DETAILS

Sec	MD	Inc	Azi	TVD	+N/-S	+E/-W	DLeg	TFace	VSec	Target
1	0.0	0.00	0.00	0.0	0.0	0.0	0.00	0.00	0.0	
2	200.0	0.00	0.00	200.0	0.0	0.0	0.00	0.00	0.0	
3	1198.4	19.97	221.31	1178.3	-129.4	-113.7	2.00	221.31	172.2	
4	5181.2	19.97	221.31	4921.7	-1151.1	-1011.5	0.00	0.00	1532.4	
5	6179.6	0.00	0.00	5900.0	-1280.5	-1125.2	2.00	180.00	1704.6	TARGET BHL 2575'FNL & 2546'FEL
6	8099.6	0.00	0.00	7820.0	-1280.5	-1125.2	0.00	0.00	1704.6	



Directional

Synergy Resources

SEC.34-T4N-R68W

SRC Coyle 31-34D Pad Sec.34-T4N-R68W

SRC Coyle 34OD

Wellbore #1

Plan: Plan #1 (8-23-11)

Standard Planning Report

25 August, 2011

Plan Sections										
Measured Depth (ft)	Inclination (°)	Azimuth (°)	Vertical Depth (ft)	+N/-S (ft)	+E/-W (ft)	Dogleg Rate (°/100ft)	Build Rate (°/100ft)	Turn Rate (°/100ft)	TFO (°)	Target
0.0	0.00	0.00	0.0	0.0	0.0	0.00	0.00	0.00	0.00	
200.0	0.00	0.00	200.0	0.0	0.0	0.00	0.00	0.00	0.00	
1,198.4	19.97	221.31	1,178.3	-129.4	-113.7	2.00	2.00	0.00	221.31	
5,181.2	19.97	221.31	4,921.7	-1,151.1	-1,011.5	0.00	0.00	0.00	0.00	
6,179.6	0.00	0.00	5,900.0	-1,280.5	-1,125.2	2.00	-2.00	0.00	180.00	TARGET BHL 2575
8,099.6	0.00	0.00	7,820.0	-1,280.5	-1,125.2	0.00	0.00	0.00	0.00	

Database:	Landmark	Local Co-ordinate Reference:	Well SRC Coyle 34OD
Company:	Synergy Resources	TVD Reference:	WELL @ 5123.0ft (Original Well Elev)
Project:	SEC.34-T4N-R68W	MD Reference:	WELL @ 5123.0ft (Original Well Elev)
Site:	SRC Coyle 31-34D Pad Sec.34-T4N-R68W	North Reference:	True
Well:	SRC Coyle 34OD	Survey Calculation Method:	Minimum Curvature
Wellbore:	Wellbore #1		
Design:	Plan #1 (8-23-11)		

Planned Survey									
Measured Depth (ft)	Inclination (°)	Azimuth (°)	Vertical Depth (ft)	+N/-S (ft)	+E/-W (ft)	Vertical Section (ft)	Dogleg Rate (°/100ft)	Build Rate (°/100ft)	Turn Rate (°/100ft)
0.0	0.00	0.00	0.0	0.0	0.0	0.0	0.00	0.00	0.00
40.0	0.00	0.00	40.0	0.0	0.0	0.0	0.00	0.00	0.00
80.0	0.00	0.00	80.0	0.0	0.0	0.0	0.00	0.00	0.00
120.0	0.00	0.00	120.0	0.0	0.0	0.0	0.00	0.00	0.00
160.0	0.00	0.00	160.0	0.0	0.0	0.0	0.00	0.00	0.00
200.0	0.00	0.00	200.0	0.0	0.0	0.0	0.00	0.00	0.00
240.0	0.80	221.31	240.0	-0.2	-0.2	0.3	2.00	2.00	0.00
280.0	1.60	221.31	280.0	-0.8	-0.7	1.1	2.00	2.00	0.00
320.0	2.40	221.31	320.0	-1.9	-1.7	2.5	2.00	2.00	0.00
360.0	3.20	221.31	359.9	-3.4	-2.9	4.5	2.00	2.00	0.00
400.0	4.00	221.31	399.8	-5.2	-4.6	7.0	2.00	2.00	0.00
440.0	4.80	221.31	439.7	-7.5	-6.6	10.0	2.00	2.00	0.00
480.0	5.60	221.31	479.6	-10.3	-9.0	13.7	2.00	2.00	0.00
520.0	6.40	221.31	519.3	-13.4	-11.8	17.9	2.00	2.00	0.00
560.0	7.20	221.31	559.1	-17.0	-14.9	22.6	2.00	2.00	0.00
600.0	8.00	221.31	598.7	-20.9	-18.4	27.9	2.00	2.00	0.00
640.0	8.80	221.31	638.3	-25.3	-22.3	33.7	2.00	2.00	0.00
641.7	8.83	221.31	640.0	-25.5	-22.4	34.0	2.00	2.00	0.00
8 5/8"									
680.0	9.60	221.31	677.8	-30.1	-26.5	40.1	2.00	2.00	0.00
720.0	10.40	221.31	717.1	-35.4	-31.1	47.1	2.00	2.00	0.00
760.0	11.20	221.31	756.4	-41.0	-36.0	54.6	2.00	2.00	0.00
800.0	12.00	221.31	795.6	-47.0	-41.3	62.6	2.00	2.00	0.00
840.0	12.80	221.31	834.7	-53.5	-47.0	71.2	2.00	2.00	0.00
880.0	13.60	221.31	873.6	-60.3	-53.0	80.3	2.00	2.00	0.00
920.0	14.40	221.31	912.4	-67.6	-59.4	90.0	2.00	2.00	0.00
960.0	15.20	221.31	951.1	-75.3	-66.2	100.2	2.00	2.00	0.00
1,000.0	16.00	221.31	989.6	-83.4	-73.3	111.0	2.00	2.00	0.00
1,040.0	16.80	221.31	1,028.0	-91.8	-80.7	122.3	2.00	2.00	0.00
1,080.0	17.60	221.31	1,066.2	-100.7	-88.5	134.1	2.00	2.00	0.00
1,120.0	18.40	221.31	1,104.3	-110.0	-96.7	146.5	2.00	2.00	0.00
1,160.0	19.20	221.31	1,142.1	-119.7	-105.2	159.3	2.00	2.00	0.00
1,198.4	19.97	221.31	1,178.3	-129.4	-113.7	172.2	2.00	2.00	0.00
1,200.0	19.97	221.31	1,179.8	-129.8	-114.0	172.8	0.00	0.00	0.00
1,240.0	19.97	221.31	1,217.4	-140.0	-123.1	186.4	0.00	0.00	0.00
1,280.0	19.97	221.31	1,255.0	-150.3	-132.1	200.1	0.00	0.00	0.00
1,320.0	19.97	221.31	1,292.6	-160.6	-141.1	213.7	0.00	0.00	0.00
1,360.0	19.97	221.31	1,330.2	-170.8	-150.1	227.4	0.00	0.00	0.00
1,400.0	19.97	221.31	1,367.8	-181.1	-159.1	241.1	0.00	0.00	0.00
1,440.0	19.97	221.31	1,405.4	-191.4	-168.1	254.7	0.00	0.00	0.00
1,480.0	19.97	221.31	1,443.0	-201.6	-177.2	268.4	0.00	0.00	0.00
1,520.0	19.97	221.31	1,480.6	-211.9	-186.2	282.0	0.00	0.00	0.00
1,560.0	19.97	221.31	1,518.2	-222.1	-195.2	295.7	0.00	0.00	0.00
1,600.0	19.97	221.31	1,555.8	-232.4	-204.2	309.4	0.00	0.00	0.00
1,640.0	19.97	221.31	1,593.4	-242.7	-213.2	323.0	0.00	0.00	0.00
1,680.0	19.97	221.31	1,631.0	-252.9	-222.2	336.7	0.00	0.00	0.00
1,720.0	19.97	221.31	1,668.6	-263.2	-231.3	350.3	0.00	0.00	0.00
1,760.0	19.97	221.31	1,706.1	-273.4	-240.3	364.0	0.00	0.00	0.00
1,800.0	19.97	221.31	1,743.7	-283.7	-249.3	377.7	0.00	0.00	0.00
1,840.0	19.97	221.31	1,781.3	-294.0	-258.3	391.3	0.00	0.00	0.00
1,880.0	19.97	221.31	1,818.9	-304.2	-267.3	405.0	0.00	0.00	0.00
1,920.0	19.97	221.31	1,856.5	-314.5	-276.3	418.6	0.00	0.00	0.00
1,960.0	19.97	221.31	1,894.1	-324.8	-285.4	432.3	0.00	0.00	0.00
2,000.0	19.97	221.31	1,931.7	-335.0	-294.4	446.0	0.00	0.00	0.00

Database:	Landmark	Local Co-ordinate Reference:	Well SRC Coyle 34OD
Company:	Synergy Resources	TVD Reference:	WELL @ 5123.0ft (Original Well Elev)
Project:	SEC.34-T4N-R68W	MD Reference:	WELL @ 5123.0ft (Original Well Elev)
Site:	SRC Coyle 31-34D Pad Sec.34-T4N-R68W	North Reference:	True
Well:	SRC Coyle 34OD	Survey Calculation Method:	Minimum Curvature
Wellbore:	Wellbore #1		
Design:	Plan #1 (8-23-11)		

Planned Survey									
Measured Depth (ft)	Inclination (°)	Azimuth (°)	Vertical Depth (ft)	+N/-S (ft)	+E/-W (ft)	Vertical Section (ft)	Dogleg Rate (°/100ft)	Build Rate (°/100ft)	Turn Rate (°/100ft)
2,040.0	19.97	221.31	1,969.3	-345.3	-303.4	459.6	0.00	0.00	0.00
2,080.0	19.97	221.31	2,006.9	-355.5	-312.4	473.3	0.00	0.00	0.00
2,120.0	19.97	221.31	2,044.5	-365.8	-321.4	486.9	0.00	0.00	0.00
2,160.0	19.97	221.31	2,082.1	-376.1	-330.4	500.6	0.00	0.00	0.00
2,200.0	19.97	221.31	2,119.7	-386.3	-339.5	514.3	0.00	0.00	0.00
2,240.0	19.97	221.31	2,157.3	-396.6	-348.5	527.9	0.00	0.00	0.00
2,280.0	19.97	221.31	2,194.9	-406.8	-357.5	541.6	0.00	0.00	0.00
2,320.0	19.97	221.31	2,232.5	-417.1	-366.5	555.3	0.00	0.00	0.00
2,360.0	19.97	221.31	2,270.1	-427.4	-375.5	568.9	0.00	0.00	0.00
2,400.0	19.97	221.31	2,307.7	-437.6	-384.5	582.6	0.00	0.00	0.00
2,440.0	19.97	221.31	2,345.3	-447.9	-393.6	596.2	0.00	0.00	0.00
2,480.0	19.97	221.31	2,382.9	-458.1	-402.6	609.9	0.00	0.00	0.00
2,520.0	19.97	221.31	2,420.5	-468.4	-411.6	623.6	0.00	0.00	0.00
2,560.0	19.97	221.31	2,458.1	-478.7	-420.6	637.2	0.00	0.00	0.00
2,600.0	19.97	221.31	2,495.6	-488.9	-429.6	650.9	0.00	0.00	0.00
2,640.0	19.97	221.31	2,533.2	-499.2	-438.6	664.5	0.00	0.00	0.00
2,680.0	19.97	221.31	2,570.8	-509.5	-447.7	678.2	0.00	0.00	0.00
2,720.0	19.97	221.31	2,608.4	-519.7	-456.7	691.9	0.00	0.00	0.00
2,760.0	19.97	221.31	2,646.0	-530.0	-465.7	705.5	0.00	0.00	0.00
2,800.0	19.97	221.31	2,683.6	-540.2	-474.7	719.2	0.00	0.00	0.00
2,840.0	19.97	221.31	2,721.2	-550.5	-483.7	732.8	0.00	0.00	0.00
2,880.0	19.97	221.31	2,758.8	-560.8	-492.7	746.5	0.00	0.00	0.00
2,920.0	19.97	221.31	2,796.4	-571.0	-501.8	760.2	0.00	0.00	0.00
2,960.0	19.97	221.31	2,834.0	-581.3	-510.8	773.8	0.00	0.00	0.00
3,000.0	19.97	221.31	2,871.6	-591.5	-519.8	787.5	0.00	0.00	0.00
3,040.0	19.97	221.31	2,909.2	-601.8	-528.8	801.1	0.00	0.00	0.00
3,080.0	19.97	221.31	2,946.8	-612.1	-537.8	814.8	0.00	0.00	0.00
3,120.0	19.97	221.31	2,984.4	-622.3	-546.8	828.5	0.00	0.00	0.00
3,160.0	19.97	221.31	3,022.0	-632.6	-555.9	842.1	0.00	0.00	0.00
3,200.0	19.97	221.31	3,059.6	-642.9	-564.9	855.8	0.00	0.00	0.00
3,240.0	19.97	221.31	3,097.2	-653.1	-573.9	869.4	0.00	0.00	0.00
3,280.0	19.97	221.31	3,134.8	-663.4	-582.9	883.1	0.00	0.00	0.00
3,320.0	19.97	221.31	3,172.4	-673.6	-591.9	896.8	0.00	0.00	0.00
3,360.0	19.97	221.31	3,210.0	-683.9	-600.9	910.4	0.00	0.00	0.00
3,400.0	19.97	221.31	3,247.6	-694.2	-610.0	924.1	0.00	0.00	0.00
3,440.0	19.97	221.31	3,285.1	-704.4	-619.0	937.7	0.00	0.00	0.00
3,480.0	19.97	221.31	3,322.7	-714.7	-628.0	951.4	0.00	0.00	0.00
3,520.0	19.97	221.31	3,360.3	-724.9	-637.0	965.1	0.00	0.00	0.00
3,560.0	19.97	221.31	3,397.9	-735.2	-646.0	978.7	0.00	0.00	0.00
3,600.0	19.97	221.31	3,435.5	-745.5	-655.0	992.4	0.00	0.00	0.00
3,640.0	19.97	221.31	3,473.1	-755.7	-664.1	1,006.0	0.00	0.00	0.00
3,680.0	19.97	221.31	3,510.7	-766.0	-673.1	1,019.7	0.00	0.00	0.00
3,720.0	19.97	221.31	3,548.3	-776.3	-682.1	1,033.4	0.00	0.00	0.00
3,760.0	19.97	221.31	3,585.9	-786.5	-691.1	1,047.0	0.00	0.00	0.00
3,800.0	19.97	221.31	3,623.5	-796.8	-700.1	1,060.7	0.00	0.00	0.00
3,840.0	19.97	221.31	3,661.1	-807.0	-709.1	1,074.3	0.00	0.00	0.00
3,880.0	19.97	221.31	3,698.7	-817.3	-718.2	1,088.0	0.00	0.00	0.00
3,920.0	19.97	221.31	3,736.3	-827.6	-727.2	1,101.7	0.00	0.00	0.00
3,960.0	19.97	221.31	3,773.9	-837.8	-736.2	1,115.3	0.00	0.00	0.00
4,000.0	19.97	221.31	3,811.5	-848.1	-745.2	1,129.0	0.00	0.00	0.00
4,040.0	19.97	221.31	3,849.1	-858.3	-754.2	1,142.6	0.00	0.00	0.00
4,080.0	19.97	221.31	3,886.7	-868.6	-763.2	1,156.3	0.00	0.00	0.00
4,120.0	19.97	221.31	3,924.3	-878.9	-772.3	1,170.0	0.00	0.00	0.00
4,160.0	19.97	221.31	3,961.9	-889.1	-781.3	1,183.6	0.00	0.00	0.00

Database:	Landmark	Local Co-ordinate Reference:	Well SRC Coyle 34OD
Company:	Synergy Resources	TVD Reference:	WELL @ 5123.0ft (Original Well Elev)
Project:	SEC.34-T4N-R68W	MD Reference:	WELL @ 5123.0ft (Original Well Elev)
Site:	SRC Coyle 31-34D Pad Sec.34-T4N-R68W	North Reference:	True
Well:	SRC Coyle 34OD	Survey Calculation Method:	Minimum Curvature
Wellbore:	Wellbore #1		
Design:	Plan #1 (8-23-11)		

Planned Survey									
Measured Depth (ft)	Inclination (°)	Azimuth (°)	Vertical Depth (ft)	+N/-S (ft)	+E/-W (ft)	Vertical Section (ft)	Dogleg Rate (°/100ft)	Build Rate (°/100ft)	Turn Rate (°/100ft)
4,200.0	19.97	221.31	3,999.5	-899.4	-790.3	1,197.3	0.00	0.00	0.00
4,240.0	19.97	221.31	4,037.1	-909.7	-799.3	1,210.9	0.00	0.00	0.00
4,280.0	19.97	221.31	4,074.6	-919.9	-808.3	1,224.6	0.00	0.00	0.00
4,320.0	19.97	221.31	4,112.2	-930.2	-817.3	1,238.3	0.00	0.00	0.00
4,360.0	19.97	221.31	4,149.8	-940.4	-826.4	1,251.9	0.00	0.00	0.00
4,400.0	19.97	221.31	4,187.4	-950.7	-835.4	1,265.6	0.00	0.00	0.00
4,440.0	19.97	221.31	4,225.0	-961.0	-844.4	1,279.2	0.00	0.00	0.00
4,480.0	19.97	221.31	4,262.6	-971.2	-853.4	1,292.9	0.00	0.00	0.00
4,520.0	19.97	221.31	4,300.2	-981.5	-862.4	1,306.6	0.00	0.00	0.00
4,560.0	19.97	221.31	4,337.8	-991.7	-871.4	1,320.2	0.00	0.00	0.00
4,600.0	19.97	221.31	4,375.4	-1,002.0	-880.5	1,333.9	0.00	0.00	0.00
4,640.0	19.97	221.31	4,413.0	-1,012.3	-889.5	1,347.5	0.00	0.00	0.00
4,680.0	19.97	221.31	4,450.6	-1,022.5	-898.5	1,361.2	0.00	0.00	0.00
4,720.0	19.97	221.31	4,488.2	-1,032.8	-907.5	1,374.9	0.00	0.00	0.00
4,760.0	19.97	221.31	4,525.8	-1,043.1	-916.5	1,388.5	0.00	0.00	0.00
4,800.0	19.97	221.31	4,563.4	-1,053.3	-925.5	1,402.2	0.00	0.00	0.00
4,840.0	19.97	221.31	4,601.0	-1,063.6	-934.6	1,415.8	0.00	0.00	0.00
4,880.0	19.97	221.31	4,638.6	-1,073.8	-943.6	1,429.5	0.00	0.00	0.00
4,920.0	19.97	221.31	4,676.2	-1,084.1	-952.6	1,443.2	0.00	0.00	0.00
4,960.0	19.97	221.31	4,713.8	-1,094.4	-961.6	1,456.8	0.00	0.00	0.00
5,000.0	19.97	221.31	4,751.4	-1,104.6	-970.6	1,470.5	0.00	0.00	0.00
5,040.0	19.97	221.31	4,789.0	-1,114.9	-979.6	1,484.1	0.00	0.00	0.00
5,080.0	19.97	221.31	4,826.6	-1,125.1	-988.7	1,497.8	0.00	0.00	0.00
5,120.0	19.97	221.31	4,864.1	-1,135.4	-997.7	1,511.5	0.00	0.00	0.00
5,160.0	19.97	221.31	4,901.7	-1,145.7	-1,006.7	1,525.1	0.00	0.00	0.00
5,181.2	19.97	221.31	4,921.7	-1,151.1	-1,011.5	1,532.4	0.00	0.00	0.00
5,200.0	19.59	221.31	4,939.4	-1,155.9	-1,015.7	1,538.7	2.00	-2.00	0.00
5,240.0	18.79	221.31	4,977.1	-1,165.8	-1,024.4	1,551.9	2.00	-2.00	0.00
5,280.0	17.99	221.31	5,015.1	-1,175.2	-1,032.7	1,564.5	2.00	-2.00	0.00
5,320.0	17.19	221.31	5,053.2	-1,184.3	-1,040.7	1,576.6	2.00	-2.00	0.00
5,360.0	16.39	221.31	5,091.5	-1,193.0	-1,048.3	1,588.1	2.00	-2.00	0.00
5,400.0	15.59	221.31	5,130.0	-1,201.3	-1,055.6	1,599.2	2.00	-2.00	0.00
5,440.0	14.79	221.31	5,168.6	-1,209.2	-1,062.5	1,609.6	2.00	-2.00	0.00
5,480.0	13.99	221.31	5,207.3	-1,216.6	-1,069.0	1,619.6	2.00	-2.00	0.00
5,520.0	13.19	221.31	5,246.2	-1,223.7	-1,075.3	1,629.0	2.00	-2.00	0.00
5,560.0	12.39	221.31	5,285.2	-1,230.3	-1,081.1	1,637.8	2.00	-2.00	0.00
5,600.0	11.59	221.31	5,324.3	-1,236.6	-1,086.6	1,646.1	2.00	-2.00	0.00
5,640.0	10.79	221.31	5,363.6	-1,242.4	-1,091.7	1,653.9	2.00	-2.00	0.00
5,680.0	9.99	221.31	5,402.9	-1,247.8	-1,096.5	1,661.1	2.00	-2.00	0.00
5,720.0	9.19	221.31	5,442.3	-1,252.8	-1,100.9	1,667.8	2.00	-2.00	0.00
5,760.0	8.39	221.31	5,481.9	-1,257.4	-1,104.9	1,673.9	2.00	-2.00	0.00
5,800.0	7.59	221.31	5,521.5	-1,261.6	-1,108.6	1,679.5	2.00	-2.00	0.00
5,840.0	6.79	221.31	5,561.2	-1,265.4	-1,111.9	1,684.5	2.00	-2.00	0.00
5,880.0	5.99	221.31	5,600.9	-1,268.7	-1,114.8	1,688.9	2.00	-2.00	0.00
5,920.0	5.19	221.31	5,640.7	-1,271.7	-1,117.4	1,692.8	2.00	-2.00	0.00
5,960.0	4.39	221.31	5,680.6	-1,274.2	-1,119.6	1,696.2	2.00	-2.00	0.00
6,000.0	3.59	221.31	5,720.5	-1,276.3	-1,121.4	1,699.0	2.00	-2.00	0.00
6,040.0	2.79	221.31	5,760.4	-1,277.9	-1,122.9	1,701.2	2.00	-2.00	0.00
6,080.0	1.99	221.31	5,800.4	-1,279.2	-1,124.0	1,702.9	2.00	-2.00	0.00
6,120.0	1.19	221.31	5,840.4	-1,280.0	-1,124.7	1,704.0	2.00	-2.00	0.00
6,160.0	0.39	221.31	5,880.4	-1,280.4	-1,125.1	1,704.5	2.00	-2.00	0.00
6,179.6	0.00	0.00	5,900.0	-1,280.5	-1,125.2	1,704.6	2.00	-2.00	0.00
TARGET BHL 2575'FNL & 2546'FEL									
6,200.0	0.00	0.00	5,920.4	-1,280.5	-1,125.2	1,704.6	0.00	0.00	0.00

Database:	Landmark	Local Co-ordinate Reference:	Well SRC Coyle 34OD
Company:	Synergy Resources	TVD Reference:	WELL @ 5123.0ft (Original Well Elev)
Project:	SEC.34-T4N-R68W	MD Reference:	WELL @ 5123.0ft (Original Well Elev)
Site:	SRC Coyle 31-34D Pad Sec.34-T4N-R68W	North Reference:	True
Well:	SRC Coyle 34OD	Survey Calculation Method:	Minimum Curvature
Wellbore:	Wellbore #1		
Design:	Plan #1 (8-23-11)		

Planned Survey									
Measured Depth (ft)	Inclination (°)	Azimuth (°)	Vertical Depth (ft)	+N/-S (ft)	+E/-W (ft)	Vertical Section (ft)	Dogleg Rate (°/100ft)	Build Rate (°/100ft)	Turn Rate (°/100ft)
6,240.0	0.00	0.00	5,960.4	-1,280.5	-1,125.2	1,704.6	0.00	0.00	0.00
6,280.0	0.00	0.00	6,000.4	-1,280.5	-1,125.2	1,704.6	0.00	0.00	0.00
6,320.0	0.00	0.00	6,040.4	-1,280.5	-1,125.2	1,704.6	0.00	0.00	0.00
6,360.0	0.00	0.00	6,080.4	-1,280.5	-1,125.2	1,704.6	0.00	0.00	0.00
6,400.0	0.00	0.00	6,120.4	-1,280.5	-1,125.2	1,704.6	0.00	0.00	0.00
6,440.0	0.00	0.00	6,160.4	-1,280.5	-1,125.2	1,704.6	0.00	0.00	0.00
6,480.0	0.00	0.00	6,200.4	-1,280.5	-1,125.2	1,704.6	0.00	0.00	0.00
6,520.0	0.00	0.00	6,240.4	-1,280.5	-1,125.2	1,704.6	0.00	0.00	0.00
6,560.0	0.00	0.00	6,280.4	-1,280.5	-1,125.2	1,704.6	0.00	0.00	0.00
6,600.0	0.00	0.00	6,320.4	-1,280.5	-1,125.2	1,704.6	0.00	0.00	0.00
6,640.0	0.00	0.00	6,360.4	-1,280.5	-1,125.2	1,704.6	0.00	0.00	0.00
6,680.0	0.00	0.00	6,400.4	-1,280.5	-1,125.2	1,704.6	0.00	0.00	0.00
6,720.0	0.00	0.00	6,440.4	-1,280.5	-1,125.2	1,704.6	0.00	0.00	0.00
6,760.0	0.00	0.00	6,480.4	-1,280.5	-1,125.2	1,704.6	0.00	0.00	0.00
6,800.0	0.00	0.00	6,520.4	-1,280.5	-1,125.2	1,704.6	0.00	0.00	0.00
6,840.0	0.00	0.00	6,560.4	-1,280.5	-1,125.2	1,704.6	0.00	0.00	0.00
6,880.0	0.00	0.00	6,600.4	-1,280.5	-1,125.2	1,704.6	0.00	0.00	0.00
6,920.0	0.00	0.00	6,640.4	-1,280.5	-1,125.2	1,704.6	0.00	0.00	0.00
6,960.0	0.00	0.00	6,680.4	-1,280.5	-1,125.2	1,704.6	0.00	0.00	0.00
7,000.0	0.00	0.00	6,720.4	-1,280.5	-1,125.2	1,704.6	0.00	0.00	0.00
7,040.0	0.00	0.00	6,760.4	-1,280.5	-1,125.2	1,704.6	0.00	0.00	0.00
7,080.0	0.00	0.00	6,800.4	-1,280.5	-1,125.2	1,704.6	0.00	0.00	0.00
7,120.0	0.00	0.00	6,840.4	-1,280.5	-1,125.2	1,704.6	0.00	0.00	0.00
7,160.0	0.00	0.00	6,880.4	-1,280.5	-1,125.2	1,704.6	0.00	0.00	0.00
7,200.0	0.00	0.00	6,920.4	-1,280.5	-1,125.2	1,704.6	0.00	0.00	0.00
7,240.0	0.00	0.00	6,960.4	-1,280.5	-1,125.2	1,704.6	0.00	0.00	0.00
7,280.0	0.00	0.00	7,000.4	-1,280.5	-1,125.2	1,704.6	0.00	0.00	0.00
7,320.0	0.00	0.00	7,040.4	-1,280.5	-1,125.2	1,704.6	0.00	0.00	0.00
7,360.0	0.00	0.00	7,080.4	-1,280.5	-1,125.2	1,704.6	0.00	0.00	0.00
7,400.0	0.00	0.00	7,120.4	-1,280.5	-1,125.2	1,704.6	0.00	0.00	0.00
7,440.0	0.00	0.00	7,160.4	-1,280.5	-1,125.2	1,704.6	0.00	0.00	0.00
7,480.0	0.00	0.00	7,200.4	-1,280.5	-1,125.2	1,704.6	0.00	0.00	0.00
7,520.0	0.00	0.00	7,240.4	-1,280.5	-1,125.2	1,704.6	0.00	0.00	0.00
7,560.0	0.00	0.00	7,280.4	-1,280.5	-1,125.2	1,704.6	0.00	0.00	0.00
7,600.0	0.00	0.00	7,320.4	-1,280.5	-1,125.2	1,704.6	0.00	0.00	0.00
7,640.0	0.00	0.00	7,360.4	-1,280.5	-1,125.2	1,704.6	0.00	0.00	0.00
7,680.0	0.00	0.00	7,400.4	-1,280.5	-1,125.2	1,704.6	0.00	0.00	0.00
7,720.0	0.00	0.00	7,440.4	-1,280.5	-1,125.2	1,704.6	0.00	0.00	0.00
7,760.0	0.00	0.00	7,480.4	-1,280.5	-1,125.2	1,704.6	0.00	0.00	0.00
7,800.0	0.00	0.00	7,520.4	-1,280.5	-1,125.2	1,704.6	0.00	0.00	0.00
7,840.0	0.00	0.00	7,560.4	-1,280.5	-1,125.2	1,704.6	0.00	0.00	0.00
7,880.0	0.00	0.00	7,600.4	-1,280.5	-1,125.2	1,704.6	0.00	0.00	0.00
7,920.0	0.00	0.00	7,640.4	-1,280.5	-1,125.2	1,704.6	0.00	0.00	0.00
7,960.0	0.00	0.00	7,680.4	-1,280.5	-1,125.2	1,704.6	0.00	0.00	0.00
8,000.0	0.00	0.00	7,720.4	-1,280.5	-1,125.2	1,704.6	0.00	0.00	0.00
8,040.0	0.00	0.00	7,760.4	-1,280.5	-1,125.2	1,704.6	0.00	0.00	0.00
8,080.0	0.00	0.00	7,800.4	-1,280.5	-1,125.2	1,704.6	0.00	0.00	0.00
8,099.6	0.00	0.00	7,820.0	-1,280.5	-1,125.2	1,704.6	0.00	0.00	0.00
J-SAND - HARDLINES 75'S & 75'W OF BHL									

Database:	Landmark	Local Co-ordinate Reference:	Well SRC Coyle 34OD
Company:	Synergy Resources	TVD Reference:	WELL @ 5123.0ft (Original Well Elev)
Project:	SEC.34-T4N-R68W	MD Reference:	WELL @ 5123.0ft (Original Well Elev)
Site:	SRC Coyle 31-34D Pad Sec.34-T4N-R68W	North Reference:	True
Well:	SRC Coyle 34OD	Survey Calculation Method:	Minimum Curvature
Wellbore:	Wellbore #1		
Design:	Plan #1 (8-23-11)		

Targets									
Target Name									
- hit/miss target	Dip Angle	Dip Dir.	TVD	+N/-S	+E/-W	Northing	Easting	Latitude	Longitude
- Shape	(°)	(°)	(ft)	(ft)	(ft)	(ft)	(ft)		
HARDLINES 75'S & 7	0.00	0.00	7,820.0	-1,355.5	-1,200.2	1,341,566.36	3,142,534.28	40.269872	-104.989204
- plan misses target center by 106.1ft at 8099.6ft MD (7820.0 TVD, -1280.5 N, -1125.2 E)									
- Polygon									
Point 1			7,820.0	0.0	0.0	1,341,566.36	3,142,534.28		
Point 2			7,820.0	200.0	0.0	1,341,766.35	3,142,533.12		
Point 3			7,820.0	0.0	0.0	1,341,566.36	3,142,534.28		
Point 4			7,820.0	0.0	200.0	1,341,567.52	3,142,734.27		
TARGET BHL 2575'F	0.00	0.00	5,900.0	-1,280.5	-1,125.2	1,341,641.80	3,142,608.88	40.270078	-104.988935
- plan hits target center									
- Point									

Casing Points					
Measured Depth	Vertical Depth			Casing Diameter	Hole Diameter
(ft)	(ft)		Name	(")	(")
641.7	640.0	8 5/8"		8-5/8	12-1/4

Formations					
Measured Depth	Vertical Depth			Dip	Dip Direction
(ft)	(ft)		Name	(°)	(°)
8,099.6	7,820.0	J-SAND		0.00	



Directional

Synergy Resources

SEC.34-T4N-R68W

SRC Coyle 31-34D Pad Sec.34-T4N-R68W

SRC Coyle 34OD

Wellbore #1

Plan #1 (8-23-11)

Anticollision Report

25 August, 2011

Company:	Synergy Resources	Local Co-ordinate Reference:	Well SRC Coyle 34OD
Project:	SEC.34-T4N-R68W	TVD Reference:	WELL @ 5123.0ft (Original Well Elev)
Reference Site:	SRC Coyle 31-34D Pad Sec.34-T4N-R68W	MD Reference:	WELL @ 5123.0ft (Original Well Elev)
Site Error:	0.0ft	North Reference:	True
Reference Well:	SRC Coyle 34OD	Survey Calculation Method:	Minimum Curvature
Well Error:	0.0ft	Output errors are at	2.00 sigma
Reference Wellbore	Wellbore #1	Database:	Landmark
Reference Design:	Plan #1 (8-23-11)	Offset TVD Reference:	Offset Datum

Offset Design												Offset Site Error:	0.0ft
SRC Coyle 31-34D Pad Sec.34-T4N-R68W - SRC Coyle 32-34D - Wellbore #1 - Plan #1 (8-23-11)												Offset Well Error:	0.0ft
Survey Program: 0-MWD													
Reference		Offset		Semi Major Axis			Distance						
Measured Depth (ft)	Vertical Depth (ft)	Measured Depth (ft)	Vertical Depth (ft)	Reference (ft)	Offset (ft)	Highside Tooface (")	Offset Wellbore Centre +N/-S (ft)	+E/-W (ft)	Between Centres (ft)	Between Ellipses (ft)	Minimum Separation (ft)	Separation Factor	Warning
1,600.0	1,555.8	1,613.1	1,601.5	6.9	4.1	-167.80	-121.8	-53.2	192.5	185.0	7.51	25.635	
1,700.0	1,649.8	1,712.5	1,698.0	7.6	4.5	-168.42	-139.6	-68.7	203.1	195.0	8.08	25.121	
1,800.0	1,743.7	1,811.9	1,794.6	8.3	5.0	-168.97	-157.4	-84.2	213.7	205.0	8.67	24.657	
1,900.0	1,837.7	1,911.3	1,891.2	9.0	5.5	-169.48	-175.3	-99.8	224.4	215.1	9.25	24.246	
2,000.0	1,931.7	2,010.7	1,987.7	9.7	5.9	-169.94	-193.1	-115.3	235.0	225.2	9.84	23.880	
2,100.0	2,025.7	2,110.1	2,084.3	10.4	6.4	-170.36	-210.9	-130.8	245.7	235.3	10.43	23.552	
2,200.0	2,119.7	2,209.6	2,180.8	11.1	6.9	-170.74	-228.7	-146.4	256.4	245.4	11.02	23.257	
2,300.0	2,213.7	2,309.0	2,277.4	11.8	7.4	-171.09	-246.5	-161.9	267.1	255.5	11.62	22.991	
2,400.0	2,307.7	2,408.4	2,374.0	12.5	7.9	-171.42	-264.4	-177.4	277.8	265.6	12.21	22.749	
2,500.0	2,401.7	2,507.8	2,470.5	13.2	8.4	-171.72	-282.2	-192.9	288.6	275.7	12.81	22.529	
2,600.0	2,495.6	2,607.2	2,567.1	13.9	8.9	-172.00	-300.0	-208.5	299.3	285.9	13.40	22.327	
2,700.0	2,589.6	2,706.6	2,663.6	14.6	9.4	-172.26	-317.8	-224.0	310.0	296.0	14.00	22.142	
2,800.0	2,683.6	2,806.0	2,760.2	15.3	9.9	-172.50	-335.6	-239.5	320.8	306.2	14.60	21.971	
2,900.0	2,777.6	2,905.4	2,856.8	16.0	10.4	-172.73	-353.5	-255.1	331.5	316.3	15.20	21.813	
3,000.0	2,871.6	3,004.9	2,953.3	16.7	10.9	-172.94	-371.3	-270.6	342.3	326.5	15.80	21.667	
3,100.0	2,965.6	3,104.3	3,049.9	17.4	11.4	-173.14	-389.1	-286.1	353.0	336.6	16.40	21.531	
3,200.0	3,059.6	3,203.7	3,146.5	18.1	11.9	-173.33	-406.9	-301.6	363.8	346.8	17.00	21.404	
3,300.0	3,153.6	3,303.1	3,243.0	18.8	12.4	-173.51	-424.7	-317.2	374.5	356.9	17.60	21.285	
3,400.0	3,247.6	3,402.5	3,339.6	19.6	12.9	-173.67	-442.6	-332.7	385.3	367.1	18.20	21.174	
3,500.0	3,341.5	3,501.9	3,436.1	20.3	13.4	-173.83	-460.4	-348.2	396.1	377.3	18.80	21.070	
3,600.0	3,435.5	3,601.3	3,532.7	21.0	13.9	-173.98	-478.2	-363.8	406.9	387.5	19.40	20.972	
3,700.0	3,529.5	3,700.7	3,629.3	21.7	14.4	-174.12	-496.0	-379.3	417.6	397.6	20.00	20.880	
3,800.0	3,623.5	3,800.2	3,725.8	22.4	14.9	-174.26	-513.8	-394.8	428.4	407.8	20.60	20.792	
3,900.0	3,717.5	3,899.6	3,822.4	23.1	15.4	-174.39	-531.7	-410.3	439.2	418.0	21.21	20.710	
4,000.0	3,811.5	3,999.0	3,918.9	23.8	15.9	-174.51	-549.5	-425.9	450.0	428.2	21.81	20.632	
4,100.0	3,905.5	4,098.4	4,015.5	24.5	16.4	-174.63	-567.3	-441.4	460.8	438.3	22.41	20.558	
4,200.0	3,999.5	4,197.8	4,112.1	25.2	16.9	-174.74	-585.1	-456.9	471.5	448.5	23.02	20.488	
4,300.0	4,093.4	4,297.2	4,208.6	25.9	17.4	-174.84	-603.0	-472.5	482.3	458.7	23.62	20.421	
4,400.0	4,187.4	4,396.6	4,305.2	26.6	17.9	-174.95	-620.8	-488.0	493.1	468.9	24.22	20.357	
4,500.0	4,281.4	4,483.3	4,389.6	27.3	18.3	-175.04	-635.6	-500.9	505.0	480.2	24.77	20.384	
4,600.0	4,375.4	4,567.3	4,471.9	28.0	18.6	-175.15	-648.2	-511.9	519.7	494.4	25.29	20.549	
4,700.0	4,469.4	4,650.4	4,553.8	28.7	18.9	-175.28	-658.9	-521.2	537.4	511.6	25.80	20.830	
4,800.0	4,563.4	4,732.6	4,635.2	29.4	19.1	-175.42	-667.6	-528.8	557.8	531.5	26.29	21.218	
4,900.0	4,657.4	4,813.8	4,715.8	30.1	19.3	-175.57	-674.6	-534.9	581.0	554.2	26.77	21.704	
5,000.0	4,751.4	4,900.0	4,801.7	30.8	19.4	-175.74	-680.1	-539.6	607.0	579.7	27.25	22.275	
5,100.0	4,845.4	4,972.6	4,874.2	31.6	19.5	-175.88	-683.1	-542.3	635.6	607.9	27.70	22.946	
5,181.2	4,921.7	5,035.6	4,937.1	32.1	19.6	-176.01	-684.7	-543.7	660.7	632.6	28.07	23.540	
5,200.0	4,939.4	5,050.0	4,951.6	32.2	19.6	-176.05	-684.9	-543.9	666.7	638.6	28.16	23.676	
5,300.0	5,034.1	5,133.6	5,035.1	32.7	19.7	-176.25	-685.2	-544.1	698.0	669.4	28.62	24.394	
5,400.0	5,130.0	5,229.4	5,131.0	33.2	19.8	-176.43	-685.2	-544.1	726.5	697.5	29.04	25.019	
5,500.0	5,226.7	5,326.2	5,227.7	33.6	19.9	-176.58	-685.2	-544.1	751.7	722.3	29.42	25.546	
5,600.0	5,324.3	5,423.8	5,325.3	33.9	20.0	-176.71	-685.2	-544.1	773.5	743.7	29.77	25.981	
5,700.0	5,422.6	5,522.1	5,423.6	34.2	20.2	-176.80	-685.2	-544.1	791.8	761.7	30.07	26.328	
5,800.0	5,521.5	5,620.9	5,522.5	34.5	20.3	-176.88	-685.2	-544.1	806.7	776.4	30.34	26.592	
5,900.0	5,620.8	5,720.3	5,621.8	34.7	20.4	-176.93	-685.2	-544.1	818.2	787.6	30.56	26.776	
6,000.0	5,720.5	5,819.9	5,721.5	34.8	20.5	-176.97	-685.2	-544.1	826.2	795.4	30.73	26.884	
6,100.0	5,820.4	5,919.8	5,821.4	35.0	20.6	-176.99	-685.2	-544.1	830.7	799.8	30.86	26.916	
6,179.6	5,900.0	5,999.4	5,901.0	35.0	20.7	44.31	-685.2	-544.1	831.8	800.9	30.94	26.880	
6,200.0	5,920.4	6,019.8	5,921.4	35.1	20.7	44.31	-685.2	-544.1	831.8	800.8	31.01	26.823	
6,300.0	6,020.4	6,119.8	6,021.4	35.1	20.9	44.31	-685.2	-544.1	831.8	800.5	31.32	26.554	
6,400.0	6,120.4	6,219.8	6,121.4	35.2	21.0	44.31	-685.2	-544.1	831.8	800.2	31.64	26.288	
6,500.0	6,220.4	6,319.8	6,221.4	35.3	21.1	44.31	-685.2	-544.1	831.8	799.8	31.96	26.024	

CC - Min centre to center distance or convergent point, SF - min separation factor, ES - min ellipse separation

Company:	Synergy Resources	Local Co-ordinate Reference:	Well SRC Coyle 34OD
Project:	SEC.34-T4N-R68W	TVD Reference:	WELL @ 5123.0ft (Original Well Elev)
Reference Site:	SRC Coyle 31-34D Pad Sec.34-T4N-R68W	MD Reference:	WELL @ 5123.0ft (Original Well Elev)
Site Error:	0.0ft	North Reference:	True
Reference Well:	SRC Coyle 34OD	Survey Calculation Method:	Minimum Curvature
Well Error:	0.0ft	Output errors are at	2.00 sigma
Reference Wellbore	Wellbore #1	Database:	Landmark
Reference Design:	Plan #1 (8-23-11)	Offset TVD Reference:	Offset Datum

Offset Design												Offset Site Error:	0.0 ft
Survey Program: 0-MWD												Offset Well Error:	0.0 ft
Reference		Offset		Semi Major Axis			Distance						
Measured Depth (ft)	Vertical Depth (ft)	Measured Depth (ft)	Vertical Depth (ft)	Reference (ft)	Offset (ft)	Highside Toolface (°)	Offset Wellbore Centre +N/-S (ft)	+E/-W (ft)	Between Centres (ft)	Between Ellipses (ft)	Minimum Separation (ft)	Separation Factor	Warning
6,600.0	6,320.4	6,419.8	6,321.4	35.3	21.2	44.31	-685.2	-544.1	831.8	799.5	32.29	25.763	
6,700.0	6,420.4	6,519.8	6,421.4	35.4	21.4	44.31	-685.2	-544.1	831.8	799.2	32.61	25.505	
6,800.0	6,520.4	6,619.8	6,521.4	35.5	21.5	44.31	-685.2	-544.1	831.8	798.9	32.94	25.250	
6,900.0	6,620.4	6,719.8	6,621.4	35.6	21.6	44.31	-685.2	-544.1	831.8	798.5	33.27	24.999	
7,000.0	6,720.4	6,819.8	6,721.4	35.6	21.8	44.31	-685.2	-544.1	831.8	798.2	33.61	24.750	
7,100.0	6,820.4	6,919.8	6,821.4	35.7	21.9	44.31	-685.2	-544.1	831.8	797.9	33.95	24.504	
7,200.0	6,920.4	7,019.8	6,921.4	35.8	22.0	44.31	-685.2	-544.1	831.8	797.5	34.29	24.261	
7,300.0	7,020.4	7,119.8	7,021.4	35.9	22.2	44.31	-685.2	-544.1	831.8	797.2	34.63	24.022	
7,400.0	7,120.4	7,219.8	7,121.4	35.9	22.3	44.31	-685.2	-544.1	831.8	796.8	34.97	23.785	
7,500.0	7,220.4	7,319.8	7,221.4	36.0	22.4	44.31	-685.2	-544.1	831.8	796.5	35.32	23.552	
7,600.0	7,320.4	7,419.8	7,321.4	36.1	22.6	44.31	-685.2	-544.1	831.8	796.1	35.67	23.322	
7,700.0	7,420.4	7,519.8	7,421.4	36.2	22.7	44.31	-685.2	-544.1	831.8	795.8	36.02	23.094	
7,800.0	7,520.4	7,619.8	7,521.4	36.3	22.9	44.31	-685.2	-544.1	831.8	795.4	36.37	22.870	
7,900.0	7,620.4	7,719.8	7,621.4	36.4	23.0	44.31	-685.2	-544.1	831.8	795.1	36.73	22.649	
8,000.0	7,720.4	7,819.8	7,721.4	36.5	23.2	44.31	-685.2	-544.1	831.8	794.7	37.08	22.431	
8,066.1	7,786.5	7,885.9	7,787.5	36.5	23.3	44.31	-685.2	-544.1	831.8	794.5	37.32	22.289	
8,099.6	7,820.0	7,918.4	7,820.0	36.5	23.3	44.31	-685.2	-544.1	831.8	794.4	37.44	22.218	

Company:	Synergy Resources	Local Co-ordinate Reference:	Well SRC Coyle 34OD
Project:	SEC.34-T4N-R68W	TVD Reference:	WELL @ 5123.0ft (Original Well Elev)
Reference Site:	SRC Coyle 31-34D Pad Sec.34-T4N-R68W	MD Reference:	WELL @ 5123.0ft (Original Well Elev)
Site Error:	0.0ft	North Reference:	True
Reference Well:	SRC Coyle 34OD	Survey Calculation Method:	Minimum Curvature
Well Error:	0.0ft	Output errors are at	2.00 sigma
Reference Wellbore	Wellbore #1	Database:	Landmark
Reference Design:	Plan #1 (8-23-11)	Offset TVD Reference:	Offset Datum

Offset Design													Offset Site Error:	0.0ft
Survey Program: 0-MWD													Offset Well Error:	0.0ft
Reference		Offset		Semi Major Axis			Distance							Warning
Measured Depth (ft)	Vertical Depth (ft)	Measured Depth (ft)	Vertical Depth (ft)	Reference (ft)	Offset (ft)	Highside Toolface (°)	Offset Wellbore Centre +N/-S (ft)	+E/-W (ft)	Between Centres (ft)	Between Ellipses (ft)	Minimum Separation (ft)	Separation Factor		
0.0	0.0	1.0	1.0	0.0	0.0	134.94	-14.2	14.2	20.1	20.1	0.00	N/A		
100.0	100.0	101.0	101.0	0.1	0.1	134.94	-14.2	14.2	20.1	19.9	0.23	88.557		
200.0	200.0	201.0	201.0	0.3	0.3	134.94	-14.2	14.2	20.1	19.4	0.68	29.715		
285.4	285.3	286.3	286.3	0.5	0.5	-90.00	-14.2	14.2	20.1	19.0	1.04	19.235 CC		
300.0	300.0	301.0	301.0	0.5	0.6	-91.35	-14.2	14.2	20.1	19.0	1.11	18.149 ES		
400.0	399.8	400.8	400.8	0.8	0.8	-105.84	-14.2	14.2	20.9	19.3	1.54	13.525		
500.0	499.5	500.5	500.5	1.0	1.0	-125.56	-14.2	14.2	24.7	22.7	2.01	12.305 SF		
600.0	598.7	599.7	599.7	1.3	1.2	-142.71	-14.2	14.2	33.3	30.8	2.48	13.434		
700.0	697.5	698.5	698.5	1.6	1.5	-154.26	-14.2	14.2	46.8	43.8	2.95	15.871		
800.0	795.6	796.6	796.6	2.0	1.7	-161.51	-14.2	14.2	64.5	61.1	3.41	18.922		
900.0	893.1	894.1	894.1	2.5	1.9	-166.14	-14.2	14.2	86.2	82.3	3.87	22.250		
1,000.0	989.6	990.6	990.6	3.0	2.1	-169.23	-14.2	14.2	111.5	107.2	4.34	25.700		
1,100.0	1,085.3	1,086.3	1,086.3	3.5	2.3	-171.37	-14.2	14.2	140.4	135.6	4.81	29.197		
1,198.4	1,178.3	1,179.3	1,179.3	4.2	2.5	-172.88	-14.2	14.2	172.1	166.9	5.27	32.649		
1,200.0	1,179.8	1,180.8	1,180.8	4.2	2.5	-172.90	-14.2	14.2	172.7	167.4	5.28	32.703		
1,300.0	1,273.8	1,274.8	1,274.8	4.9	2.8	-174.07	-14.2	14.2	206.6	200.8	5.77	35.785		
1,400.0	1,367.8	1,368.8	1,368.8	5.5	3.0	-174.91	-14.2	14.2	240.6	234.4	6.27	38.352		
1,500.0	1,461.8	1,462.8	1,462.8	6.2	3.2	-175.54	-14.2	14.2	274.7	267.9	6.78	40.516		
1,600.0	1,555.8	1,556.8	1,556.8	6.9	3.4	-176.04	-14.2	14.2	308.7	301.5	7.29	42.361		
1,700.0	1,649.8	1,650.8	1,650.8	7.6	3.6	-176.43	-14.2	14.2	342.8	335.0	7.80	43.950		
1,800.0	1,743.7	1,744.7	1,744.7	8.3	3.8	-176.75	-14.2	14.2	376.9	368.6	8.31	45.332		
1,900.0	1,837.7	1,838.7	1,838.7	9.0	4.0	-177.02	-14.2	14.2	411.0	402.2	8.83	46.543		
2,000.0	1,931.7	1,932.7	1,932.7	9.7	4.2	-177.25	-14.2	14.2	445.1	435.8	9.35	47.613		
2,100.0	2,025.7	2,026.7	2,026.7	10.4	4.4	-177.45	-14.2	14.2	479.3	469.4	9.87	48.564		
2,200.0	2,119.7	2,120.7	2,120.7	11.1	4.7	-177.62	-14.2	14.2	513.4	503.0	10.39	49.414		
2,300.0	2,213.7	2,214.7	2,214.7	11.8	4.9	-177.77	-14.2	14.2	547.5	536.6	10.91	50.179		
2,400.0	2,307.7	2,308.7	2,308.7	12.5	5.1	-177.90	-14.2	14.2	581.6	570.2	11.43	50.871		
2,500.0	2,401.7	2,402.7	2,402.7	13.2	5.3	-178.01	-14.2	14.2	615.8	603.8	11.96	51.499		
2,600.0	2,495.6	2,496.6	2,496.6	13.9	5.5	-178.12	-14.2	14.2	649.9	637.4	12.48	52.071		
2,700.0	2,589.6	2,590.6	2,590.6	14.6	5.7	-178.21	-14.2	14.2	684.0	671.0	13.01	52.595		
2,800.0	2,683.6	2,684.6	2,684.6	15.3	5.9	-178.30	-14.2	14.2	718.2	704.6	13.53	53.077		
2,900.0	2,777.6	2,778.6	2,778.6	16.0	6.1	-178.37	-14.2	14.2	752.3	738.3	14.06	53.520		
3,000.0	2,871.6	2,872.6	2,872.6	16.7	6.3	-178.44	-14.2	14.2	786.5	771.9	14.58	53.930		
3,100.0	2,965.6	2,966.6	2,966.6	17.4	6.6	-178.51	-14.2	14.2	820.6	805.5	15.11	54.310		
3,200.0	3,059.6	3,060.6	3,060.6	18.1	6.8	-178.57	-14.2	14.2	854.7	839.1	15.64	54.663		
3,300.0	3,153.6	3,154.6	3,154.6	18.8	7.0	-178.62	-14.2	14.2	888.9	872.7	16.16	54.992		
3,400.0	3,247.6	3,248.6	3,248.6	19.6	7.2	-178.67	-14.2	14.2	923.0	906.3	16.69	55.299		
3,500.0	3,341.5	3,342.5	3,342.5	20.3	7.4	-178.72	-14.2	14.2	957.2	939.9	17.22	55.586		
3,600.0	3,435.5	3,436.5	3,436.5	21.0	7.6	-178.77	-14.2	14.2	991.3	973.6	17.75	55.855		
3,700.0	3,529.5	3,530.5	3,530.5	21.7	7.8	-178.81	-14.2	14.2	1,025.4	1,007.2	18.28	56.108		
3,800.0	3,623.5	3,624.5	3,624.5	22.4	8.0	-178.85	-14.2	14.2	1,059.6	1,040.8	18.81	56.346		
3,900.0	3,717.5	3,718.5	3,718.5	23.1	8.2	-178.88	-14.2	14.2	1,093.7	1,074.4	19.33	56.570		
4,000.0	3,811.5	3,812.5	3,812.5	23.8	8.5	-178.92	-14.2	14.2	1,127.9	1,108.0	19.86	56.781		
4,100.0	3,905.5	3,906.5	3,906.5	24.5	8.7	-178.95	-14.2	14.2	1,162.0	1,141.6	20.39	56.981		
4,200.0	3,999.5	4,000.5	4,000.5	25.2	8.9	-178.98	-14.2	14.2	1,196.2	1,175.2	20.92	57.170		
4,300.0	4,093.4	4,094.4	4,094.4	25.9	9.1	-179.01	-14.2	14.2	1,230.3	1,208.9	21.45	57.349		
4,400.0	4,187.4	4,188.4	4,188.4	26.6	9.3	-179.03	-14.2	14.2	1,264.5	1,242.5	21.98	57.519		
4,500.0	4,281.4	4,282.4	4,282.4	27.3	9.5	-179.06	-14.2	14.2	1,298.6	1,276.1	22.51	57.681		
4,600.0	4,375.4	4,376.4	4,376.4	28.0	9.7	-179.08	-14.2	14.2	1,332.8	1,309.7	23.04	57.834		
4,700.0	4,469.4	4,470.4	4,470.4	28.7	9.9	-179.11	-14.2	14.2	1,366.9	1,343.3	23.58	57.981		
4,800.0	4,563.4	4,564.4	4,564.4	29.4	10.1	-179.13	-14.2	14.2	1,401.0	1,376.9	24.11	58.120		
4,900.0	4,657.4	4,658.4	4,658.4	30.1	10.4	-179.15	-14.2	14.2	1,435.2	1,410.6	24.64	58.253		

CC - Min centre to center distance or convergent point, SF - min separation factor, ES - min ellipse separation

SRC Coyle 31-34D Pad Sec.34-T4N-R68W - SRC Coyle 34C (Vert.) - Wellbore #1 - Design #1													Offset Site Error: 0.0 ft	
Survey Program: 0-MWD													Offset Well Error: 0.0 ft	
Reference		Offset		Semi Major Axis			Distance							Warning
Measured Depth	Vertical Depth	Measured Depth	Vertical Depth	Reference	Offset	Highside Toolface	Offset Wellbore Centre		Between Centres	Between Ellipses	Minimum Separation	Separation Factor		
(ft)	(ft)	(ft)	(ft)	(ft)	(ft)	(°)	+N/-S (ft)	+E/-W (ft)	(ft)	(ft)	(ft)			
5,000.0	4,751.4	4,752.4	4,752.4	30.8	10.6	-179.17	-14.2	14.2	1,469.3	1,444.2	25.17	58.379		
5,100.0	4,845.4	4,846.4	4,846.4	31.6	10.8	-179.19	-14.2	14.2	1,503.5	1,477.8	25.70	58.500		
5,181.2	4,921.7	4,922.7	4,922.7	32.1	11.0	-179.20	-14.2	14.2	1,531.2	1,505.1	26.13	58.595		
5,200.0	4,939.4	4,940.4	4,940.4	32.2	11.0	-179.21	-14.2	14.2	1,537.6	1,511.3	26.25	58.573		
5,300.0	5,034.1	5,035.1	5,035.1	32.7	11.2	-179.23	-14.2	14.2	1,569.5	1,542.6	26.84	58.473		
5,400.0	5,130.0	5,131.0	5,131.0	33.2	11.4	-179.25	-14.2	14.2	1,598.0	1,570.6	27.39	58.337		
5,500.0	5,226.7	5,227.7	5,227.7	33.6	11.6	-179.27	-14.2	14.2	1,623.2	1,595.3	27.90	58.170		
5,600.0	5,324.3	5,325.3	5,325.3	33.9	11.9	-179.29	-14.2	14.2	1,645.0	1,616.6	28.38	57.973		
5,700.0	5,422.6	5,423.6	5,423.6	34.2	12.1	-179.30	-14.2	14.2	1,663.4	1,634.6	28.80	57.750		
5,800.0	5,521.5	5,522.5	5,522.5	34.5	12.3	-179.31	-14.2	14.2	1,678.3	1,649.1	29.19	57.502		
5,900.0	5,620.8	5,621.8	5,621.8	34.7	12.5	-179.32	-14.2	14.2	1,689.8	1,660.3	29.53	57.230		
6,000.0	5,720.5	5,721.5	5,721.5	34.8	12.7	-179.32	-14.2	14.2	1,697.8	1,668.0	29.82	56.934		
6,100.0	5,820.4	5,821.4	5,821.4	35.0	13.0	-179.32	-14.2	14.2	1,702.3	1,672.3	30.07	56.616		
6,179.6	5,900.0	5,901.0	5,901.0	35.0	13.2	41.98	-14.2	14.2	1,703.4	1,673.2	30.24	56.329		
6,200.0	5,920.4	5,921.4	5,921.4	35.1	13.2	41.98	-14.2	14.2	1,703.4	1,673.1	30.32	56.189		
6,300.0	6,020.4	6,021.4	6,021.4	35.1	13.4	41.98	-14.2	14.2	1,703.4	1,672.8	30.68	55.531		
6,400.0	6,120.4	6,121.4	6,121.4	35.2	13.6	41.98	-14.2	14.2	1,703.4	1,672.4	31.04	54.884		
6,500.0	6,220.4	6,221.4	6,221.4	35.3	13.9	41.98	-14.2	14.2	1,703.4	1,672.0	31.40	54.249		
6,600.0	6,320.4	6,321.4	6,321.4	35.3	14.1	41.98	-14.2	14.2	1,703.4	1,671.7	31.77	53.626		
6,700.0	6,420.4	6,421.4	6,421.4	35.4	14.3	41.98	-14.2	14.2	1,703.4	1,671.3	32.13	53.014		
6,800.0	6,520.4	6,521.4	6,521.4	35.5	14.5	41.98	-14.2	14.2	1,703.4	1,670.9	32.50	52.413		
6,900.0	6,620.4	6,621.4	6,621.4	35.6	14.8	41.98	-14.2	14.2	1,703.4	1,670.6	32.87	51.823		
7,000.0	6,720.4	6,721.4	6,721.4	35.6	15.0	41.98	-14.2	14.2	1,703.4	1,670.2	33.24	51.243		
7,100.0	6,820.4	6,821.4	6,821.4	35.7	15.2	41.98	-14.2	14.2	1,703.4	1,669.8	33.62	50.674		
7,200.0	6,920.4	6,921.4	6,921.4	35.8	15.4	41.98	-14.2	14.2	1,703.4	1,669.4	33.99	50.116		
7,300.0	7,020.4	7,021.4	7,021.4	35.9	15.7	41.98	-14.2	14.2	1,703.4	1,669.1	34.37	49.567		
7,400.0	7,120.4	7,121.4	7,121.4	35.9	15.9	41.98	-14.2	14.2	1,703.4	1,668.7	34.74	49.028		
7,500.0	7,220.4	7,221.4	7,221.4	36.0	16.1	41.98	-14.2	14.2	1,703.4	1,668.3	35.12	48.499		
7,600.0	7,320.4	7,321.4	7,321.4	36.1	16.3	41.98	-14.2	14.2	1,703.4	1,667.9	35.50	47.979		
7,700.0	7,420.4	7,421.4	7,421.4	36.2	16.6	41.98	-14.2	14.2	1,703.4	1,667.5	35.89	47.468		
7,800.0	7,520.4	7,521.4	7,521.4	36.3	16.8	41.98	-14.2	14.2	1,703.4	1,667.2	36.27	46.967		
7,900.0	7,620.4	7,621.4	7,621.4	36.4	17.0	41.98	-14.2	14.2	1,703.4	1,666.8	36.65	46.474		
8,000.0	7,720.4	7,721.4	7,721.4	36.5	17.2	41.98	-14.2	14.2	1,703.4	1,666.4	37.04	45.990		
8,066.1	7,786.5	7,787.5	7,787.5	36.5	17.4	41.98	-14.2	14.2	1,703.4	1,666.1	37.30	45.674		
8,099.6	7,820.0	7,820.0	7,820.0	36.5	17.5	41.98	-14.2	14.2	1,703.4	1,666.0	37.42	45.519		

Company:	Synergy Resources	Local Co-ordinate Reference:	Well SRC Coyle 34OD
Project:	SEC.34-T4N-R68W	TVD Reference:	WELL @ 5123.0ft (Original Well Elev)
Reference Site:	SRC Coyle 31-34D Pad Sec.34-T4N-R68W	MD Reference:	WELL @ 5123.0ft (Original Well Elev)
Site Error:	0.0ft	North Reference:	True
Reference Well:	SRC Coyle 34OD	Survey Calculation Method:	Minimum Curvature
Well Error:	0.0ft	Output errors are at	2.00 sigma
Reference Wellbore	Wellbore #1	Database:	Landmark
Reference Design:	Plan #1 (8-23-11)	Offset TVD Reference:	Offset Datum

Offset Design												Offset Site Error:	0.0ft
Survey Program: 0-MWD												Offset Well Error:	0.0ft
Reference		Offset		Semi Major Axis			Distance						Warning
Measured Depth (ft)	Vertical Depth (ft)	Measured Depth (ft)	Vertical Depth (ft)	Reference (ft)	Offset (ft)	Highside Toolface (°)	Offset Wellbore Centre +N/-S (ft)	+E/-W (ft)	Between Centres (ft)	Between Ellipses (ft)	Minimum Separation (ft)	Separation Factor	
0.0	0.0	0.0	0.0	0.0	0.0	-44.47	14.2	-14.0	19.9	19.9	0.00	N/A	
100.0	100.0	100.0	100.0	0.1	0.1	-44.47	14.2	-14.0	19.9	19.7	0.22	88.607	
200.0	200.0	200.0	200.0	0.3	0.3	-44.47	14.2	-14.0	19.9	19.2	0.67	29.536 CC	
300.0	300.0	300.0	300.0	0.5	0.6	99.18	14.2	-14.0	20.1	19.0	1.10	18.227 ES	
400.0	399.8	399.8	399.8	0.8	0.8	112.98	14.2	-14.0	21.6	20.0	1.54	14.000	
500.0	499.5	499.5	499.5	1.0	1.0	130.67	14.2	-14.0	26.2	24.2	2.01	13.086 SF	
600.0	598.7	598.7	598.7	1.3	1.2	145.65	14.2	-14.0	35.4	33.0	2.47	14.320	
700.0	697.5	697.5	697.5	1.6	1.5	155.85	14.2	-14.0	49.2	46.2	2.94	16.735	
800.0	795.6	795.6	795.6	2.0	1.7	162.41	14.2	-14.0	67.1	63.7	3.40	19.726	
900.0	893.1	893.1	893.1	2.5	1.9	166.70	14.2	-14.0	88.8	84.9	3.86	22.990	
1,000.0	989.6	989.6	989.6	3.0	2.1	169.59	14.2	-14.0	114.2	109.9	4.33	26.382	
1,100.0	1,085.3	1,085.3	1,085.3	3.5	2.3	171.61	14.2	-14.0	143.1	138.3	4.80	29.830	
1,198.4	1,178.3	1,179.4	1,179.4	4.2	2.5	173.04	14.2	-14.1	174.7	169.5	5.26	33.241	
1,200.0	1,179.8	1,181.0	1,181.0	4.2	2.5	173.05	14.2	-14.1	175.3	170.0	5.26	33.293	
1,300.0	1,273.8	1,279.6	1,279.6	4.9	2.7	173.60	14.1	-16.9	207.6	201.9	5.74	36.146	
1,400.0	1,367.8	1,379.6	1,379.3	5.5	2.9	173.31	13.8	-23.1	238.0	231.7	6.24	38.121	
1,500.0	1,461.8	1,480.8	1,480.0	6.2	3.2	172.45	13.4	-33.0	266.3	259.5	6.77	39.333	
1,600.0	1,555.8	1,582.9	1,581.3	6.9	3.4	171.16	12.9	-46.6	292.7	285.4	7.34	39.887	
1,700.0	1,649.8	1,685.7	1,682.6	7.6	3.7	169.53	12.2	-63.9	317.3	309.3	7.96	39.861	
1,800.0	1,743.7	1,789.0	1,783.7	8.3	4.0	167.60	11.4	-84.9	340.1	331.5	8.65	39.320	
1,900.0	1,837.7	1,892.4	1,884.1	9.0	4.4	165.40	10.4	-109.5	361.5	352.1	9.43	38.330	
2,000.0	1,931.7	1,993.5	1,981.4	9.7	4.9	163.06	9.3	-136.9	381.8	371.5	10.31	37.042	
2,100.0	2,025.7	2,090.3	2,074.4	10.4	5.3	160.94	8.2	-163.9	402.3	391.0	11.23	35.810	
2,200.0	2,119.7	2,187.1	2,167.4	11.1	5.8	159.03	7.1	-190.9	423.2	411.0	12.21	34.675	
2,300.0	2,213.7	2,284.0	2,260.4	11.8	6.3	157.29	6.0	-217.8	444.6	431.4	13.21	33.647	
2,400.0	2,307.7	2,380.8	2,353.4	12.5	6.8	155.71	4.9	-244.8	466.3	452.1	14.25	32.724	
2,500.0	2,401.7	2,477.6	2,446.4	13.2	7.4	154.28	3.8	-271.8	488.4	473.1	15.31	31.896	
2,600.0	2,495.6	2,574.4	2,539.3	13.9	7.9	152.96	2.7	-298.7	510.7	494.3	16.39	31.157	
2,700.0	2,589.6	2,671.3	2,632.3	14.6	8.4	151.76	1.7	-325.7	533.2	515.7	17.49	30.496	
2,800.0	2,683.6	2,768.1	2,725.3	15.3	9.0	150.65	0.6	-352.7	556.0	537.4	18.59	29.904	
2,900.0	2,777.6	2,864.9	2,818.3	16.0	9.5	149.63	-0.5	-379.6	578.9	559.2	19.71	29.373	
3,000.0	2,871.6	2,961.8	2,911.3	16.7	10.1	148.68	-1.6	-406.6	602.0	581.2	20.83	28.896	
3,100.0	2,965.6	3,058.6	3,004.3	17.4	10.6	147.81	-2.7	-433.6	625.3	603.3	21.97	28.465	
3,200.0	3,059.6	3,155.4	3,097.3	18.1	11.2	147.00	-3.8	-460.5	648.6	625.5	23.10	28.075	
3,300.0	3,153.6	3,252.2	3,190.3	18.8	11.7	146.24	-4.9	-487.5	672.1	647.9	24.25	27.722	
3,400.0	3,247.6	3,349.1	3,283.3	19.6	12.3	145.53	-5.9	-514.5	695.7	670.3	25.39	27.400	
3,500.0	3,341.5	3,445.9	3,376.3	20.3	12.9	144.88	-7.0	-541.5	719.4	692.9	26.54	27.107	
3,600.0	3,435.5	3,542.7	3,469.3	21.0	13.4	144.26	-8.1	-568.4	743.2	715.5	27.69	26.838	
3,700.0	3,529.5	3,639.6	3,562.2	21.7	14.0	143.68	-9.2	-595.4	767.1	738.2	28.85	26.591	
3,800.0	3,623.5	3,736.4	3,655.2	22.4	14.6	143.13	-10.3	-622.4	791.0	761.0	30.00	26.365	
3,900.0	3,717.5	3,833.2	3,748.2	23.1	15.1	142.62	-11.4	-649.3	815.0	783.8	31.16	26.155	
4,000.0	3,811.5	3,930.1	3,841.2	23.8	15.7	142.14	-12.4	-676.3	839.0	806.7	32.32	25.962	
4,100.0	3,905.5	4,026.9	3,934.2	24.5	16.3	141.68	-13.5	-703.3	863.1	829.6	33.48	25.782	
4,200.0	3,999.5	4,123.7	4,027.2	25.2	16.8	141.25	-14.6	-730.2	887.2	852.6	34.64	25.616	
4,300.0	4,093.4	4,220.5	4,120.2	25.9	17.4	140.84	-15.7	-757.2	911.4	875.6	35.80	25.460	
4,400.0	4,187.4	4,317.4	4,213.2	26.6	18.0	140.45	-16.8	-784.2	935.7	898.7	36.96	25.316	
4,500.0	4,281.4	4,414.2	4,306.2	27.3	18.6	140.08	-17.9	-811.1	959.9	921.8	38.12	25.180	
4,600.0	4,375.4	4,511.0	4,399.2	28.0	19.1	139.73	-19.0	-838.1	984.2	945.0	39.29	25.054	
4,700.0	4,469.4	4,607.9	4,492.2	28.7	19.7	139.40	-20.0	-865.1	1,008.6	968.1	40.45	24.935	
4,800.0	4,563.4	4,704.7	4,585.2	29.4	20.3	139.08	-21.1	-892.0	1,033.0	991.3	41.61	24.823	
4,900.0	4,657.4	4,801.5	4,678.1	30.1	20.8	138.78	-22.2	-919.0	1,057.4	1,014.6	42.78	24.718	
5,000.0	4,751.4	4,898.3	4,771.1	30.8	21.4	138.49	-23.3	-946.0	1,081.8	1,037.8	43.94	24.619	

CC - Min centre to center distance or convergent point, SF - min separation factor, ES - min ellipse separation

COMPASS 2003.21 Build 46

Company:	Synergy Resources	Local Co-ordinate Reference:	Well SRC Coyle 34OD
Project:	SEC.34-T4N-R68W	TVD Reference:	WELL @ 5123.0ft (Original Well Elev)
Reference Site:	SRC Coyle 31-34D Pad Sec.34-T4N-R68W	MD Reference:	WELL @ 5123.0ft (Original Well Elev)
Site Error:	0.0ft	North Reference:	True
Reference Well:	SRC Coyle 34OD	Survey Calculation Method:	Minimum Curvature
Well Error:	0.0ft	Output errors are at	2.00 sigma
Reference Wellbore	Wellbore #1	Database:	Landmark
Reference Design:	Plan #1 (8-23-11)	Offset TVD Reference:	Offset Datum

Reference Depths are relative to WELL @ 5123.0ft (Original Well Elev) Coordinates are relative to: SRC Coyle 34OD
Offset Depths are relative to Offset Datum
Coordinate System is US State Plane 1983, Colorado Northern Zone
Central Meridian is -105.500000 °
Grid Convergence at Surface is: 0.33°



Company:	Synergy Resources	Local Co-ordinate Reference:	Well SRC Coyle 34OD
Project:	SEC.34-T4N-R68W	TVD Reference:	WELL @ 5123.0ft (Original Well Elev)
Reference Site:	SRC Coyle 31-34D Pad Sec.34-T4N-R68W	MD Reference:	WELL @ 5123.0ft (Original Well Elev)
Site Error:	0.0ft	North Reference:	True
Reference Well:	SRC Coyle 34OD	Survey Calculation Method:	Minimum Curvature
Well Error:	0.0ft	Output errors are at	2.00 sigma
Reference Wellbore	Wellbore #1	Database:	Landmark
Reference Design:	Plan #1 (8-23-11)	Offset TVD Reference:	Offset Datum

Reference Depths are relative to WELL @ 5123.0ft (Original Well Elev) Coordinates are relative to: SRC Coyle 34OD
Offset Depths are relative to Offset Datum Coordinate System is US State Plane 1983, Colorado Northern Zone
Central Meridian is -105.500000 ° Grid Convergence at Surface is: 0.33°

